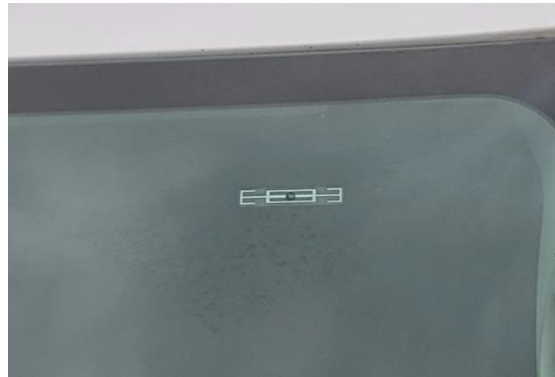




Non-Transferable Windshield Tag Mounting Instructions

Windshield Mount Tags, supplied by Infinity RFID, Inc., are high-performance radio frequency identification (RFID) devices. They have been designed to be installed on the interior or exterior of a vehicle, specifically on surfaces that are made of glass. When properly installed, windshield tags are designed in a way to not interfere with the vision of the driver. Additionally, they offer an unmatched level of security, as they are designed to destruct if removed or tampered with, once mounted to the vehicle.

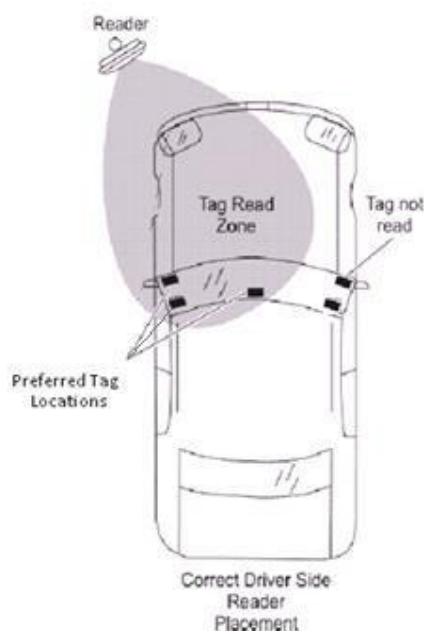
Our windshield tags have been tested to withstand a variety of environmental conditions, such as regular car washing (automated and by hand), UV exposure, vibration, windblown sand, and temperature and humidity cycles. Although this tag has been engineered for the rigors of outdoor use once it is installed, it must be handled carefully during the installation process.



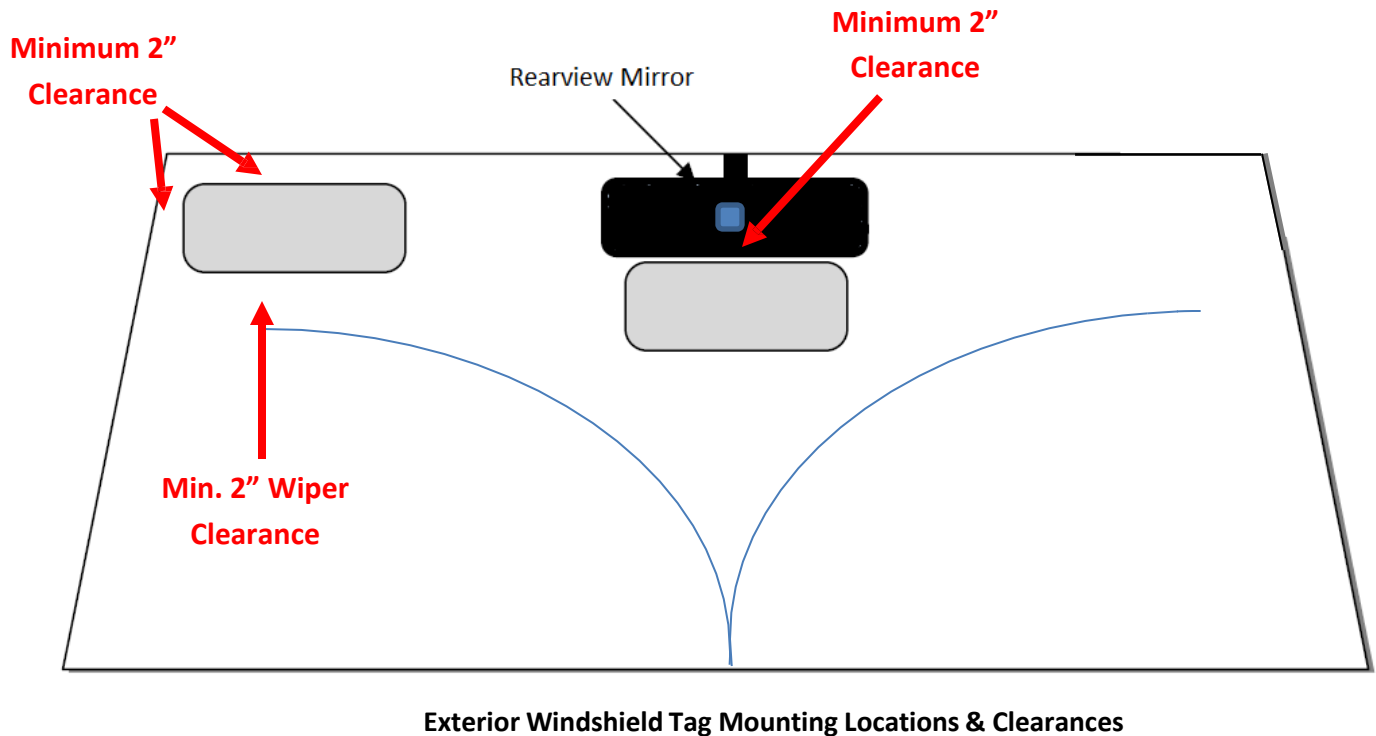
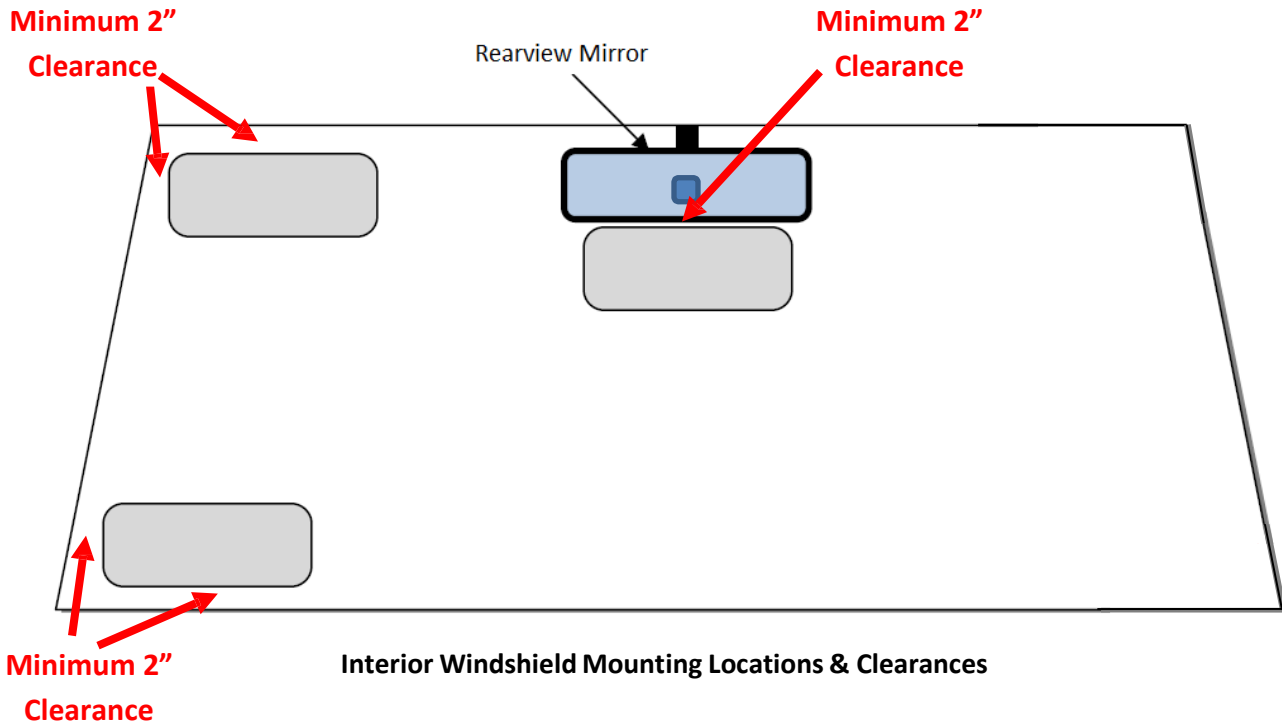
Note - Due to the wide variance in windshield design and local vehicle codes, this document is intended as a general guide and not inclusive of all vehicle makes, models or localities.

Choosing a Proper Mounting Location

For optimal performance, the RFID tag must be installed on a windshield location or other suitable mounting point that is facing the RFID reader during normal driving.



The diagrams below show suitable mounting locations of windshield tags. Choose a mounting location for the tag at least 2.5" from any materials containing metal. This includes the vehicle roofline, side pillars and rearview mirror mounting block.



Tag Handling & Installation

Step 1 – Clean the intended mounting surface to make sure that it is clean and free of any contaminants that might interfere with the tag's adhesive.



Note - Handle the tag with care during installation. Do not bend or distort the tag when removing it from the liner.

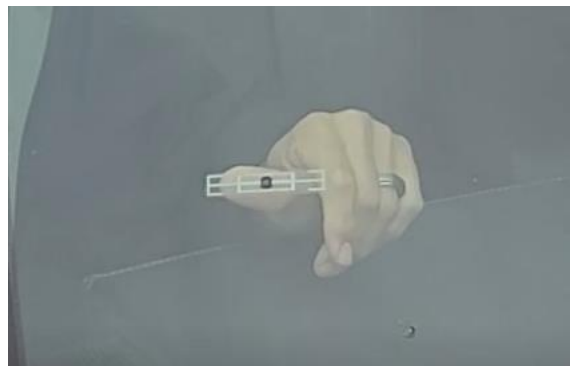


Step 2 -Transfer the tag to the location on the vehicle that you have determined suitable for your application. It is best to apply the tag by the edges as shown in the picture below.

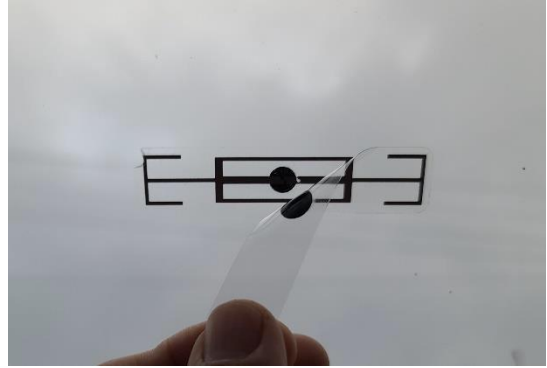
Optional – You can add a strip of masking tape to use as a guide to help ensure that the installed tag is level.



Step 3 -Smooth out the tag to ensure complete adhesion and remove any air pockets.



Note – Due to our special security design, **do not attempt to remove the tag** once the tag has been mounted. Attempting to remove the tag will damage or destroy the tag.



Tag Adhesive Cure Time

Once the tag has been installed on the vehicle, there will be a period of time necessary to allow the tag's adhesive to cure. Due to temperature and humidity variations, the total cure time may vary. Most applications will experience an 80% cure of the adhesive within 1 hour and full adhesive cure within 24 hours of application. **Please do not wash the area around the tag or disturb the tag for 24 hours after installation.**

Infinity **RFID**, Inc.

www.infinityRFIDinc.com