

BLUE LAGOON - ICELAND



Day Passes

Comfort

USD 124 - 136 per person

Select

Included:

Access to the Blue Lagoon
Silica Mud Mask at the Mask Bar
Use of towel
One non-alcoholic drink at the in-water bar

Premium

USD 148 - 161 per person

Select

Included:

Access to the Blue Lagoon
Silica Mud Mask at the Mask Bar
Use of towel
+ Use of bathrobe
+ One drink of choice at the in-water bar
+ Two additional masks of your choice at the mask bar
+ Silica Mud Mask 10 ml (to take home)

Signature

USD 177 - 189 per person

Select

Included:

Access to the Blue Lagoon
Silica Mud Mask at the Mask Bar
Use of towel
+ Use of bathrobe
+ Two drinks of choice at the in-water bar
+ Two additional masks of your choice at the mask bar
+ Blue Lagoon Skincare products to take home, valued at USD 115

ACCOMODATIONS AT THE BLUE LAGOON

Silica Hotel *with private lagoon*

RECOMMENDED HOTEL (We will be staying here September 7-8)



Rooms conceived for wellness and design, the hotel's 35 rooms come in three types: Lava Deluxe, Moss Deluxe, and Silica Deluxe. Each bright and spacious room is equipped with a veranda and offers stunning views of the surrounding volcanic terrain. The resort is located 20 minutes from the International Airport and 50 minutes from Reykjavik.

There are 8 Lava Deluxe Rooms, 22 Moss Deluxe Rooms, and 5 Silica Deluxe Rooms.

Included with every room:

- Unlimited access to the hotel's "**PRIVATE**" lagoon, Silica Lagoon. Open from 9am to 10pm.
- One "**PREMIUM**" admission per guest to the Blue Lagoon (7 minute walk) or you can upgrade to retreat spa admission starting at about \$550 (see below for details on what it includes)
- Gourmet Breakfast (served 07:30 - 10:30)
- –Wi-Fi–
- Use of fitness center –
- Taxes and service charges

Room rates are from \$1,026 to \$1,045 a night. Which is a terrific value considering the amenities included in with the room. Premium Package access to Blue Lagoon for 2 guests \$322 and Gourmet Breakfast for 2 \$100+ These perks add up to over \$420 and that does not even consider the value of unlimited use of the hotel's **PRIVATE LAGOON**. With only 35 rooms, this hotel option books up early.

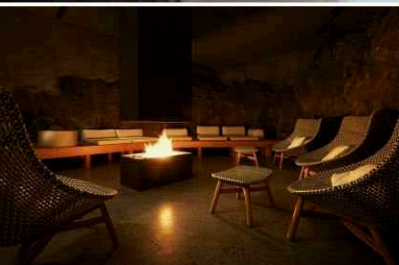
Easy reservation, no deposit needed. The hotel will charge your credit card 10 days before arrival.

[**CLICK TO DOWNLOAD FACT SHEET**](#)



ACCOMMODATIONS AT THE BLUE LAGOON

The Retreat *with private lagoon and SPA*



The Retreat at Blue Lagoon Iceland is an award-winning, five-star luxury resort set within an 800-year-old lava field, where contemporary design meets Iceland's raw volcanic beauty. This intimate sanctuary features 62 elegantly appointed suites, most with floor-to-ceiling windows overlooking the lagoon, and select accommodations offering private lagoon access.

At the heart of the experience is wellness. Guests enjoy unlimited access to the Retreat Spa, a serene subterranean sanctuary carved into lava rock, offering a curated journey of heat therapies, steam rooms, and in-lagoon massages. Exclusive entry to the Retreat Lagoon—a private extension of the famed Blue Lagoon—allows guests to immerse themselves in mineral-rich geothermal waters renowned for their healing properties of silica, algae, and minerals. Access to the main Blue Lagoon is also included.

Culinary excellence is showcased at Moss Restaurant, the resort's Michelin-starred dining destination, where modern Icelandic cuisine is crafted with seasonal, locally sourced ingredients. Daily gourmet breakfast is included, featuring a refined selection of fresh delicacies and classic morning favorites.

Thoughtful daily rituals enhance the guest experience, including Icelandic coffee time enjoyed in the hotel's elegant lobby and morning yoga sessions overlooking the dramatic volcanic landscape. In-suite indulgence continues with a curated collection of award-winning Blue Lagoon Skincare products, allowing guests to enjoy the lagoon's nourishing benefits in complete privacy.

Designed by Basalt Architects and Design Group Italia, the resort's award-winning architecture and interiors use natural materials such as lava stone and wood to seamlessly blend luxury with the surrounding environment, creating a tranquil, immersive retreat unlike anywhere else in the world.

Room Rates start at \$2,371 a night. Which includes access to the private retreat lagoon and access to the blue lagoon. It also includes all day admission to the retreat spa open from 8am-8pm a \$1,300 value.

[CLICK TO DOWNLOAD FACT SHEET](#)



HOTEL IN REYKJAVIK CITY CENTER

These represent just a small selection of Reykjavík's outstanding hotel offerings. We've focused on well-located properties within a refined mid-to-upper price range in the same general vicinity, while noting that there are many options available both above and below this level. Our recommendations tend to favor established, well-regarded brands to ensure a consistently elevated standard of comfort, service, and overall guest experience. All hotels are about a 10-15 minute car ride from the port of Skarfabakki terminal 5 with is what Virgin uses in Reykjavik.

MARRIOTT HOTELS



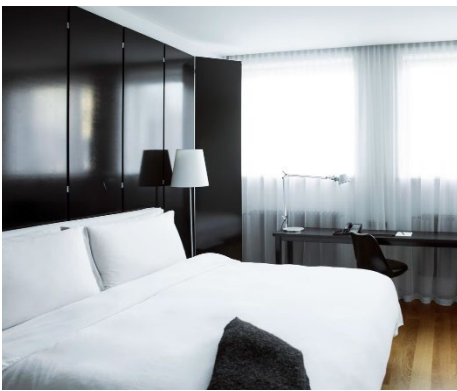
101 Hotel, Reykjavik a Member of Design Hotels

RECOMMENDED (We will be staying here September 6-7)

True downtown 101 location near the main shopping street Laugavegur (easy walk to restaurants/café).

Boutique / design-forward hotel.

On-site restaurant + bar, plus fitness spa/steam/sauna-style wellness facilities.



**DROP OFF HOTEL FOR
GOLDEN CIRCLE PRIVATE
TOUR**

Estimated price

(Sept 6–7, 2026)

Rates from \$400

(rates change daily)

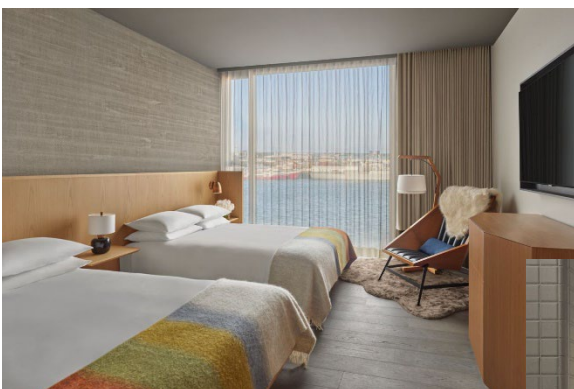
The Reykjavik EDITION

Premier waterfront location beside Harpa Concert Hall and the Old Harbour, offering easy access to Reykjavík's top dining, shopping, and cultural attractions.

Five-star, design-driven luxury with sleek Nordic interiors,

floor-to-ceiling windows, and refined in-room amenities.

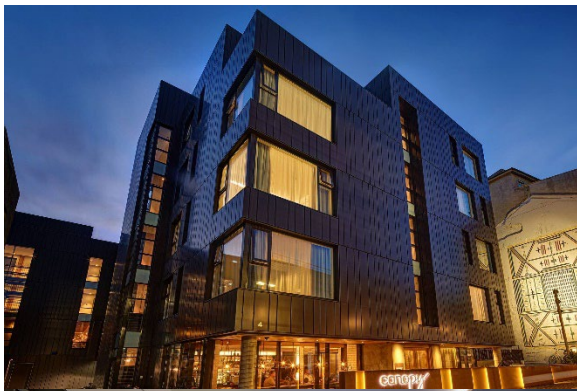
Exceptional dining and social venues, multiple bars, and a rooftop bar.



Estimated price (Sept 6–7, 2026)

Rates from \$700 a night (rates change daily)

HILTON HOTELS



[Canopy by Hilton Reykjavik City Centre](#)

Prime central location in the heart of Reykjavík, steps from shops, cafés, restaurants, and major attractions — ideal for exploring on foot.



Contemporary, stylish design with thoughtfully curated spaces reflecting Icelandic culture and local flair.

Comfortable, well-appointed rooms with quality bedding, modern amenities, and a boutique relaxed feel.



Estimated price (Sept 6–7, 2026)

Rates from \$400 a night (rates change daily)



[Reykjavik Konsulat Hotel, Curio Collection by Hilton](#)

Prime waterfront location in the Old Harbour district — steps from Harpa Concert Hall, shops, cafés, and prime sightseeing spots.

Historic building with refined design — blending classic architecture and local character with contemporary comfort.



Spacious, well-appointed rooms with thoughtful amenities and quality finishes.



Estimated price (Sept 6–7, 2026)

Rates from \$450 a night (rates change daily)