

Installation Wizard User's Manual

This Manual is for you to understand how to install Installation Wizard, and how to use the tool to search IP address, upgrade firmware, and set other basic setting for the devices.

Thank you for purchasing this Panasonic product.

Please read this manual carefully before using this product and save this manual for future use.

In this manual, the suffix of each model number is omitted unless necessary.

Manuals and supporting information are provided on the Panasonic Web site at:

<http://www.panasonic.net/support/pbx/>

Note

- The screen shots shown in this guide are provided for reference only, and may differ from the screens displayed on your PC.

Table of Contents

1	Installation	3
1.1	Software Installation	3
2	Using Installation Wizard	6
2.1	User Interface	6
2.1.1	Functional Buttons	8
2.2	Manual Setup	9
2.2.1	System Setting	10
2.2.1.1	Change Host Name	10
2.2.1.2	Change root password	10
2.2.1.3	Adjust date and time	11
2.2.2	Network Setting	11
2.2.2.1	PPPoE Setting	12
2.2.2.2	LAN Setting	15
2.2.2.3	Wireless setting	15
2.3	Access Information	17
2.4	Upgrade Firmware(s)	20
2.4.1	Device Information	21
2.4.2	Firmware Information	22
2.4.3	Select Firmware	22
2.4.4	Start Upgrade	23
2.4.5	Upgrading Firmware for Multiple Cameras	24
2.5	Restore Default	27

1 Installation

1.1 Software Installation

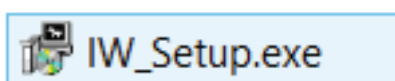
The following are steps for the software installation.

1. Download Installation wizard from Panasonic web site.
<http://www.panasonic.net/support/pbx/>
Unzip IW_vX.XX.zip then double click IW_Setup.exe to install installation Wizard on your computer.

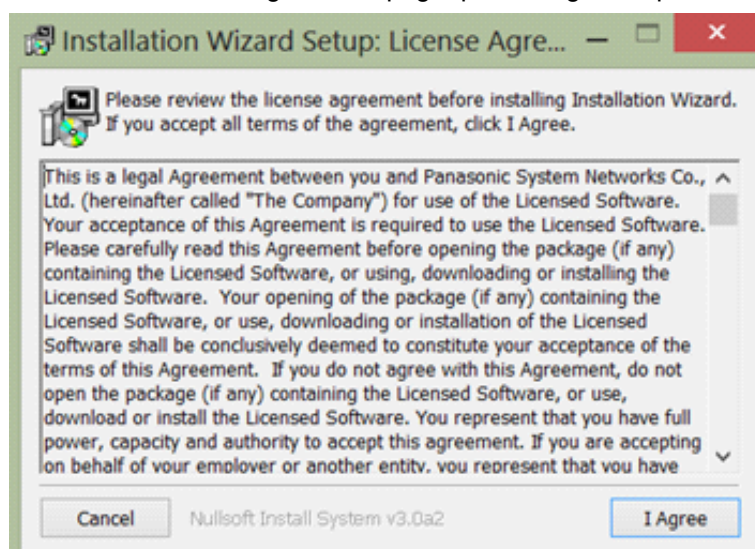
Note

- Installation Wizard will be abbreviated as IW in the following discussions throughout this document.

Double click IW_Setup.exe to install the IW.

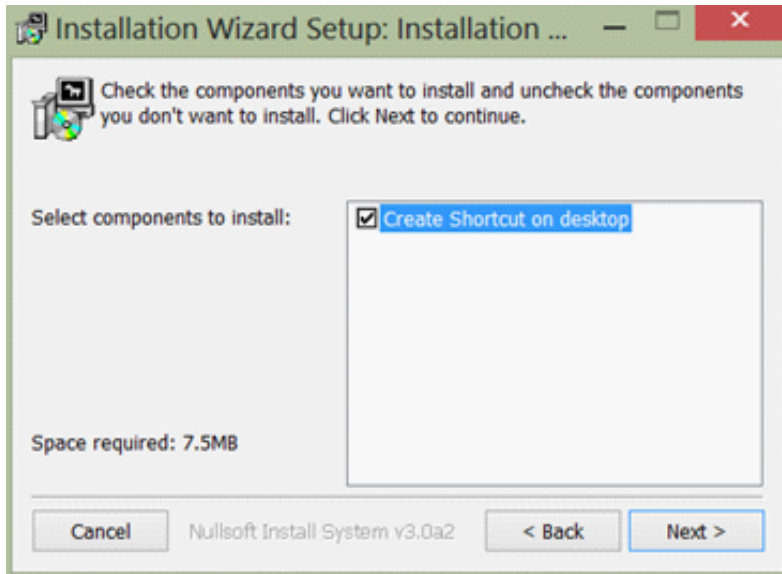


2. On the License and Agreement page, press I Agree to proceed to the next step.

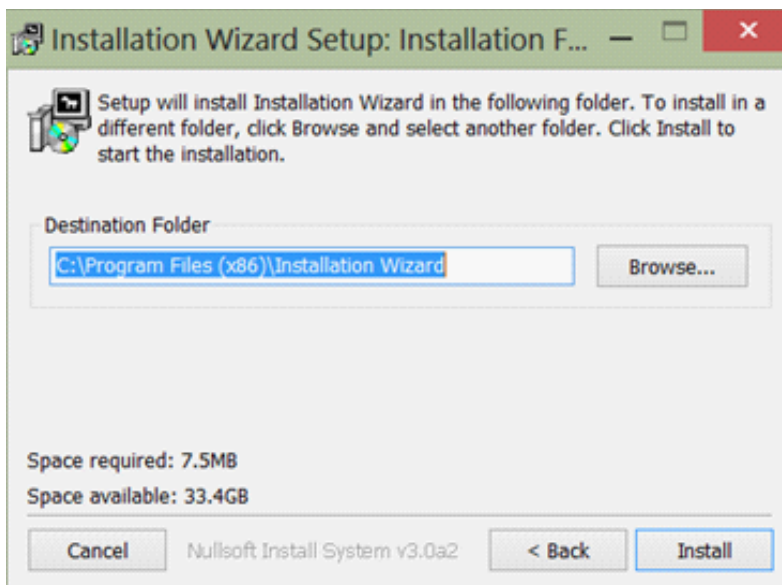


1 Installation

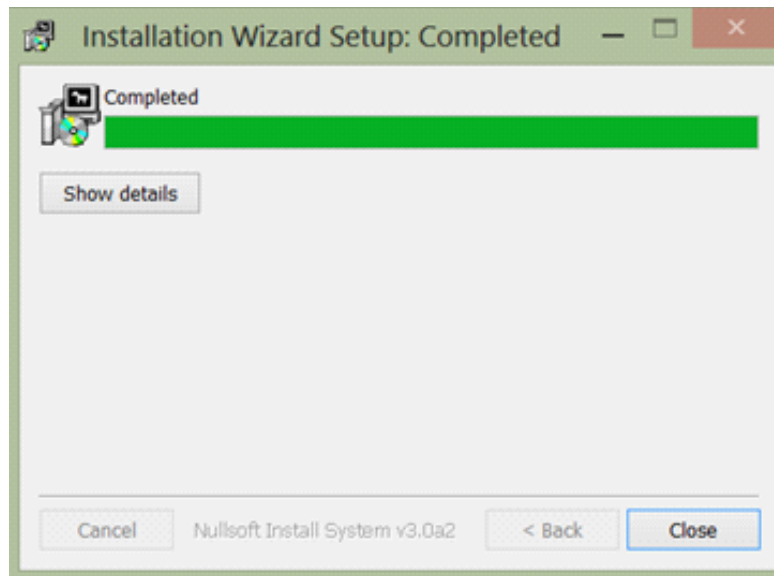
3. Choose if you want to create a shortcut on the desktop. Press Next.



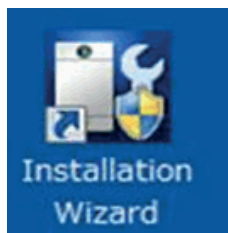
4. Select the installation path to install IW. Press Install to install IW.



5. Press close to finish the process.



6. Installation Wizard icon is created on desktop.

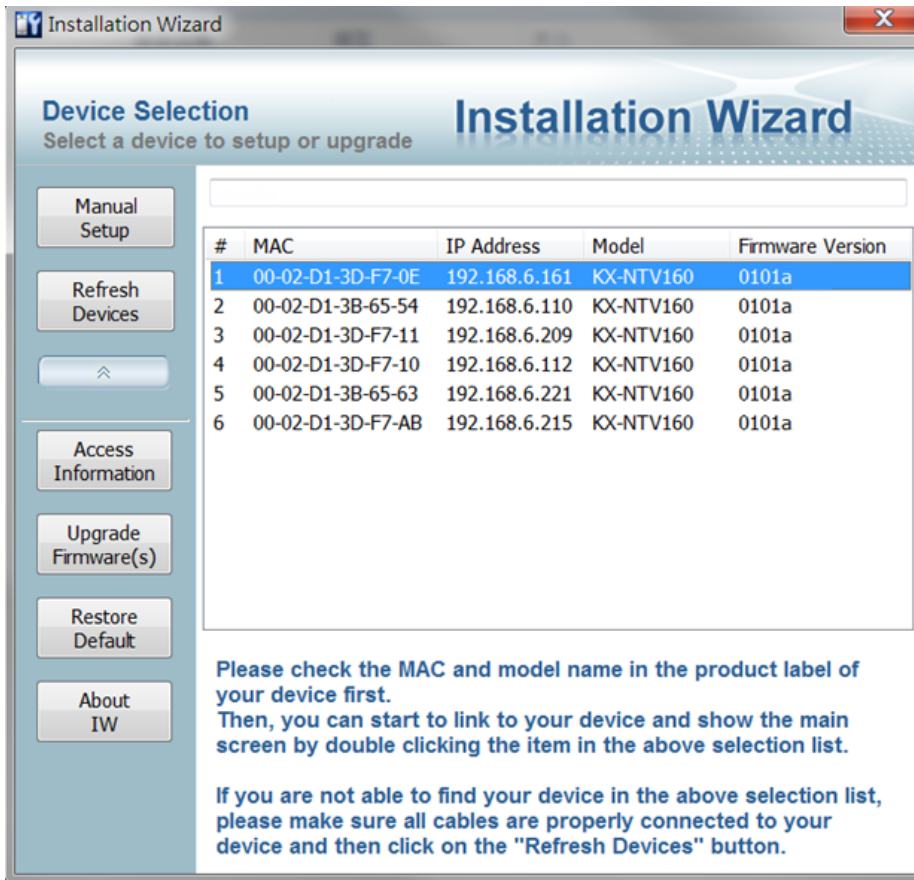


2 Using Installation Wizard

2.1 User Interface

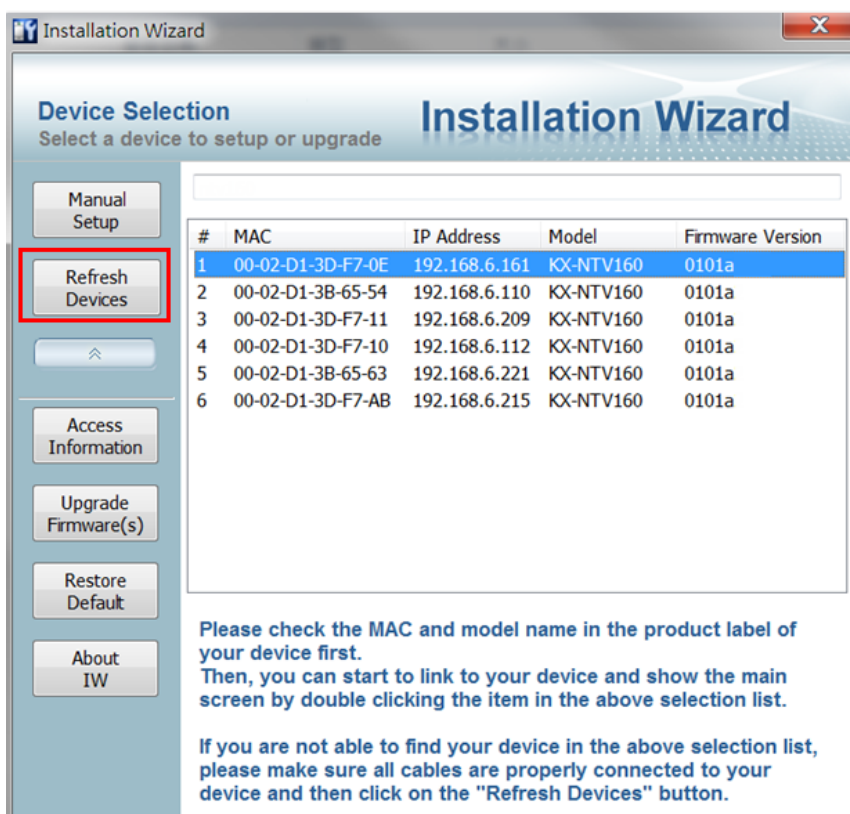
The product connected in the local network will be listed if a DHCP service is present and they are assigned with IP addresses.

On this window, most of the functional buttons will not be available until you click to select a camera from the list. Select a model (e.g., KX-NTV150) and click on the double-arrow button to display more functional buttons on the left of the screen. They include: "Manual Setup", "Access Information", "Upgrade Firmware(s)", "Restore Default" and "About IW".



IW allows you to setup one device at one time and upgrade the firmware of multiple devices (please note that IW, KX-NTV150 and KX-NTV160 are not the same model) at the same time. You can use the Shift key and left mouse click to select multiple cameras. If you select different models, the "Upgrade Firmware(s)" button will be disabled.





The "Refresh Devices" button polls the local network for all connected cameras. Refreshing the device list will take several seconds.

If you want to establish a management session with a device, double-click on it, and a session on the IE browser will start.

2.1.1 Functional Buttons

#	MAC	IP Address	Model	Firmware Version
1	00-02-D1-3D-F7-0E	192.168.6.161	KX-NTV160	0101a
2	00-02-D1-3B-65-54	192.168.6.110	KX-NTV160	0101a
3	00-02-D1-3D-F7-11	192.168.6.209	KX-NTV160	0101a
4	00-02-D1-3D-F7-10	192.168.6.112	KX-NTV160	0101a
5	00-02-D1-3B-65-63	192.168.6.221	KX-NTV160	0101a
6	00-02-D1-3D-F7-AB	192.168.6.215	KX-NTV160	0101a

Manual Setup

Click on this button to modify the setting of the selected devices. For more details, please refer to 2.2 Manual Setup (Page 9) for more information.

Upgrade Firmware(s)

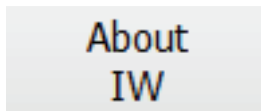
Click on this button to upgrade the firmware of the selected devices. For more details, please refer to 2.4 Upgrade Firmware(s) (Page 20).

Access Information

Click on this button to get the access information, it will show you the IP Address information, DDNS information, UPnP Port Forwarding information, and PPPoE connecting information. For more details, please refer to 2.3 Access Information (Page 17).

Restore Default

Click on this button to restore the selected device to factory defaults.



Click on this button to get version information of the Installation Wizard.

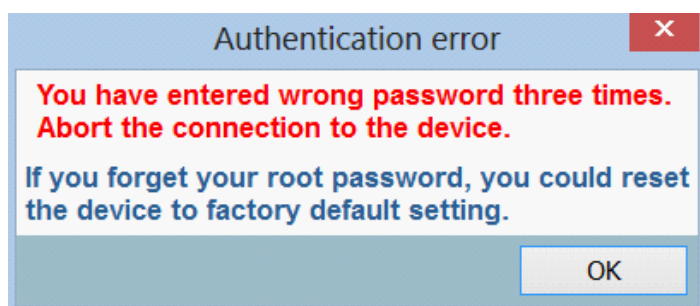
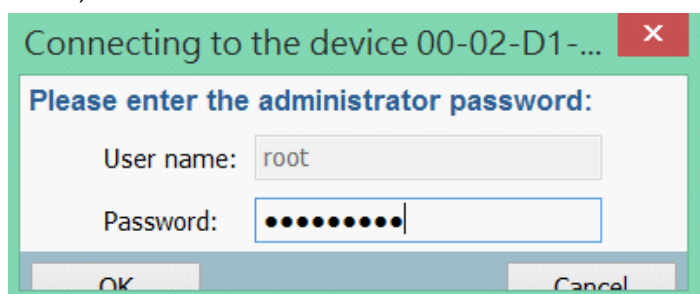
2.2 Manual Setup

IMPORTANT

- Write down the fixed IP or the IP address acquired through a DHCP service for your camera before you proceed. This IP will be necessary if you need to configure wireless network connections afterwards.

When you select one device in the selection list, the "Manual Setup" button will be enabled. Click on it to modify the settings of the selected device. The IW will attempt to connect to the selected device.

We strongly recommend that you access the WEB UI to change the default password before starting use of the software. If a user name and password have been configured on the device, a confirmation box will be displayed prompting you to enter the user name and password. Enter User name and Password for accessing the device. If you fail to enter the correct password three times, the IW will display a warning message (see below) and abort the connection.



Note

- If the KX-NTV150/KX-NTV160 is disconnected or the IP address does not exist anymore, because Installation Wizard cannot manually set IP addresses that do not exist, please refresh Installation Wizard again to get the correct IP address, and then try manually configuring again.

2.2.1 System Setting

After connecting to the selected device, the Installation wizard will switch to the system setting page.

Installation Wizard - Setup Your Device

General Settings
System, date, and time setup

Installation Wizard

Step 1 >> System

System setup

Hostname:

Administrator

User name:

Password:

Confirm password:

Date/Time setup

Date:

Time: (hh:mm:ss)

Keep current date and time

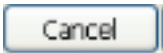
Synchronize with computer time

Set date and time manually

Synchronize to network time server automatically

For security consideration, you can assign the hostname and administrator password for your device. Anyone who does not have correct password cannot access the device. If you forget your administrator password, your device must be restored to default settings.

Cancel Next



Click this button to cancel the setup progress.



Click this button to keep the present setting and proceed.

2.2.1.1 Change Host Name

The "Hostname" is displayed on a camera's web browser homepage and is displayed on the title bar with each video feed from the camera. The maximum string length is 40 characters or 13 characters in double-byte-character systems like Chinese or Japanese. Although some devices support Unicode, the maximum string length depends on the characters you enter, and the actual length may be less than 20 alphabetic characters. A warning message will be displayed if you enter invalid characters that are not supported by the ASCII code.

2.2.1.2 Change root password

To change the administrator's password, type the new password in both "Password" and "Confirm Password" text boxes identically. The maximum length of password depends on the server you are connected

to. A warning message will be displayed if you enter invalid characters that are not supported by the ASCII code. The default administrator name is "root," and this name cannot be changed.

2.2.1.3 Adjust date and time

There are three ways to adjust system date and time:

1. "Synchronize with computer time": The easiest way is to make device synchronized with the computer running IW.
2. "Set date and time manually": Set the date and time manually by entering new values. Notice the format in the related field while typing.
3. "Synchronize to network time server automatically": Make device automatically synchronized with time servers over the Internet every hour. Note that the NTP time server setting is made through a browser management session with the network camera. The configuration is found in System → System Time → NTP server.

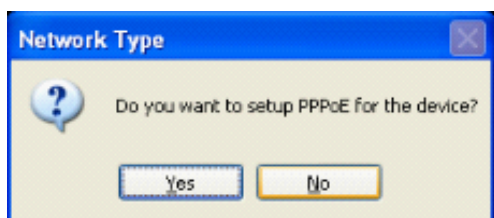
If you want to keep the current date and time, please choose "Keep current date and time".

2.2.2 Network Setting

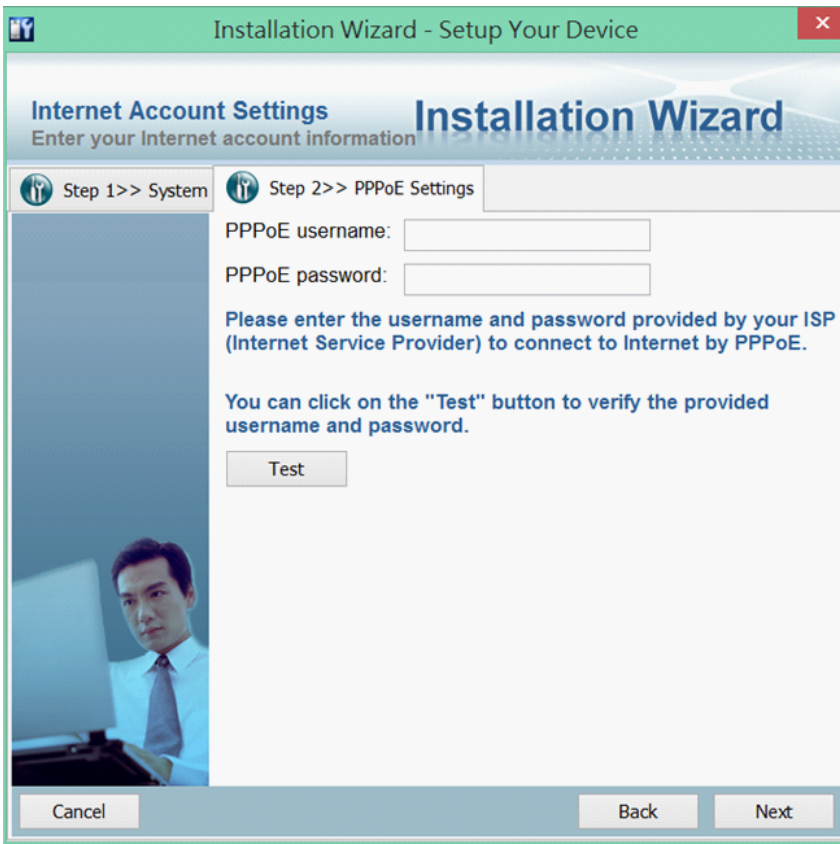
The IW can help you setup the network connection with LAN or PPPoE. After you clicked on the "Next" button from the System page, the IW will prompt you to configure the PPPoE setting (page 12). If you want to connect your network camera to Internet via PPPoE, please click on "Yes" to start the PPPoE setting process, or click on "No" to invoke the LAN setting.

Note

- If you accidentally click "Yes" while you do not want to set up network on PPPoE, close the General Settings window and start again.



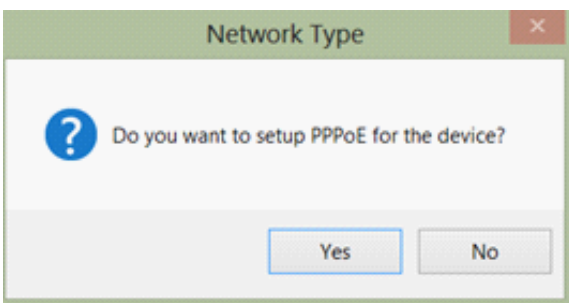
2.2.2.1 PPPoE Setting



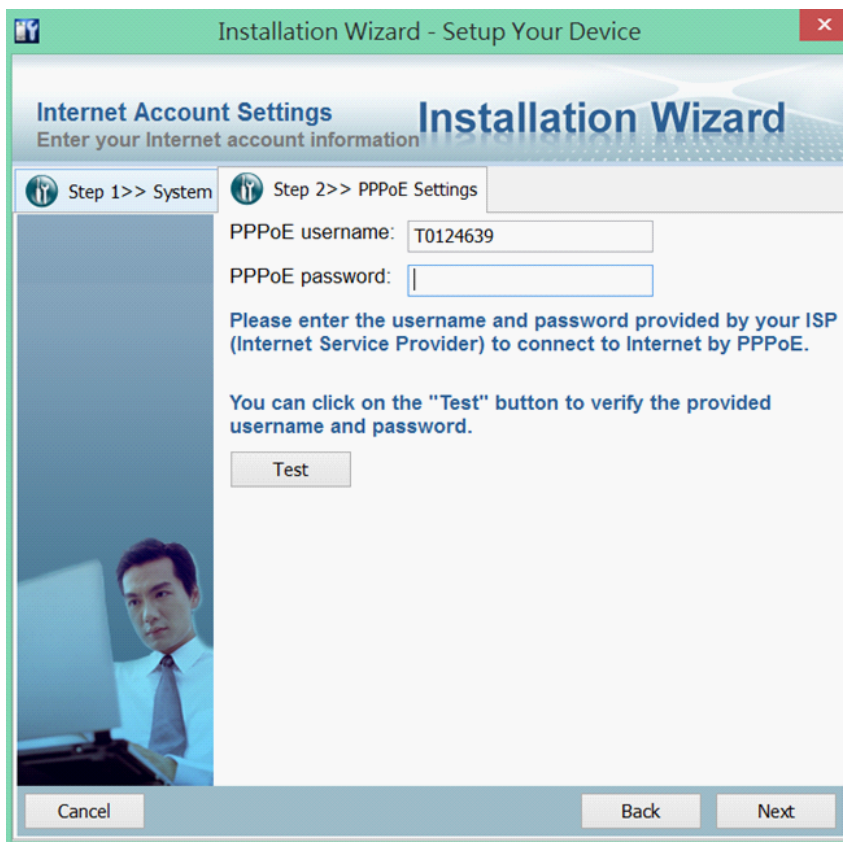
If you click on "Yes" in the "Network Type" dialog, you will enter the PPPoE setting page. Enter "PPPoE username" and "PPPoE password" provided by your Internet Service Provider. If you do not know the account information, please contact your ISP. After entering the account information, please click on the "Next" button to continue.

The maximum length of user name is 128 characters and 64 for the password. A warning message will be displayed if you enter invalid characters that are not supported by the ASCII code.

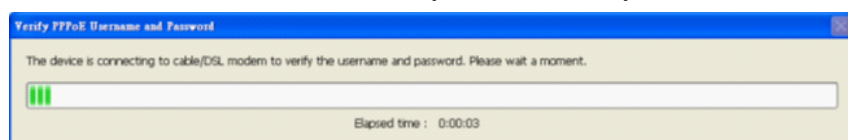
During the initiation process the IW automatically analyzes your network environment, and will prompt you to configure the PPPoE connection. If you attach cameras to a local area network, the PPPoE prompt might not be displayed.



If your network connection is made via PPPoE, click "Yes" to begin configuration.



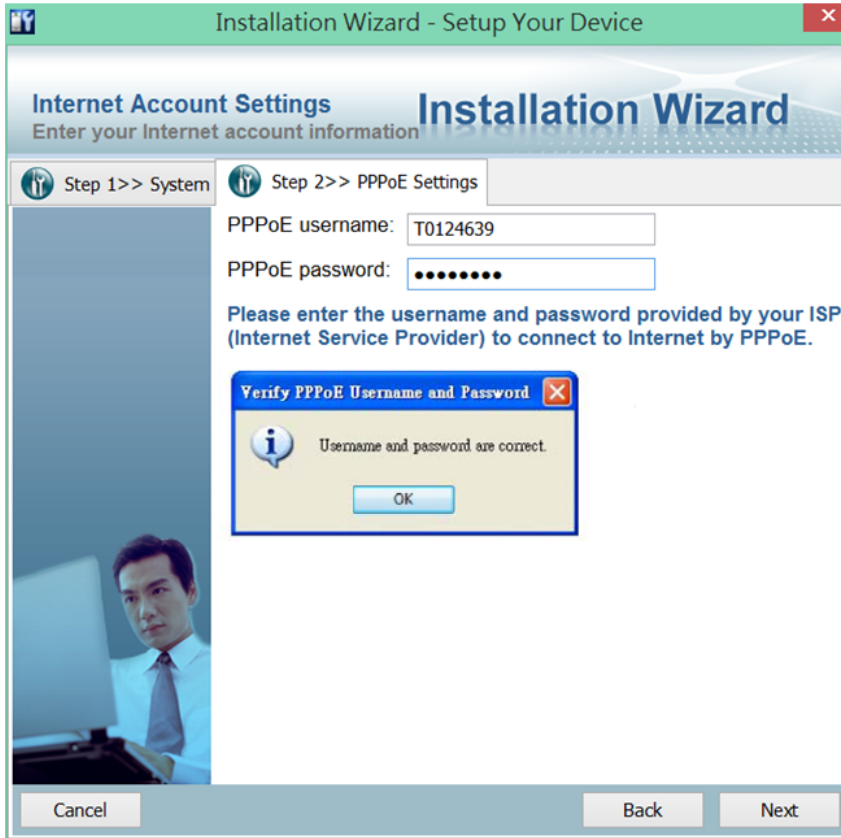
1. On the Internet Account Settings page, enter the PPPoE username and PPPoE password distributed to you by your ISP.
2. You can use the Test button to verify the connectivity via PPPoE.



The IW will try to connect via the cable/DSL modem with your ISP server.

2 Using Installation Wizard

3. Upon successful connection, the following message will be displayed.

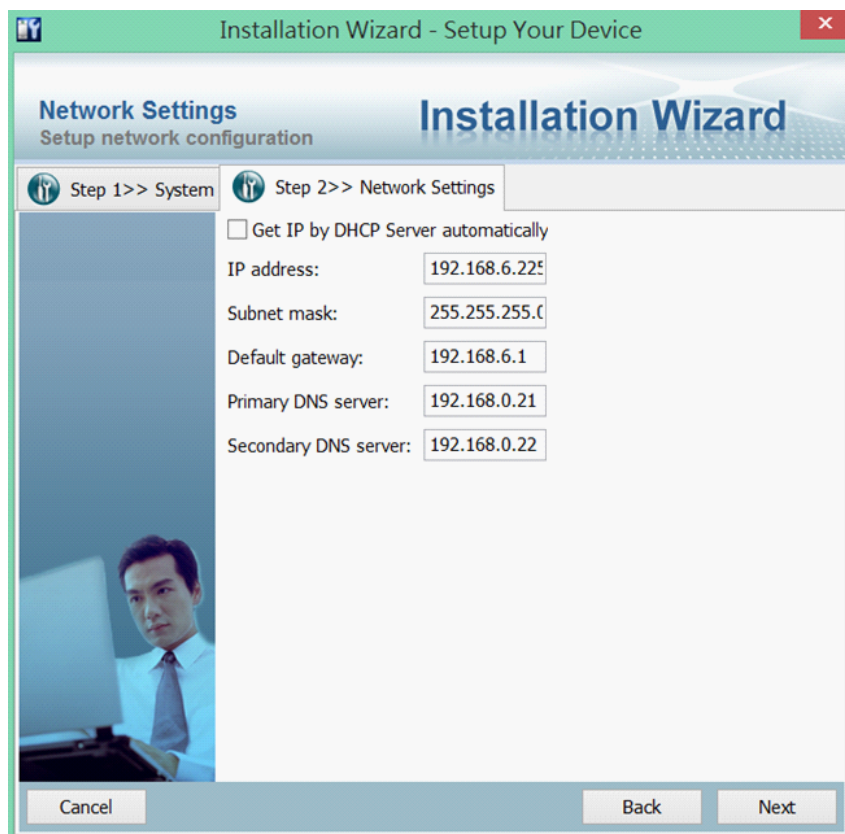


4. Continue your configuration using the Next button. If PPPoE service is not valid or you entered the wrong user name/password, the following message will be displayed. Consult your ISP for the correct PPPoE setup.



2.2.2.2 LAN Setting

If you click on "No" in the "Network Type" dialog, you will enter the Network Setting page. In this page, you can manually enter a static IP, subnet mask, default gateway, primary DNS server, and secondary DNS server. Please consult your network administrator for networking information.



You can set up the network with DHCP or fixed IP:

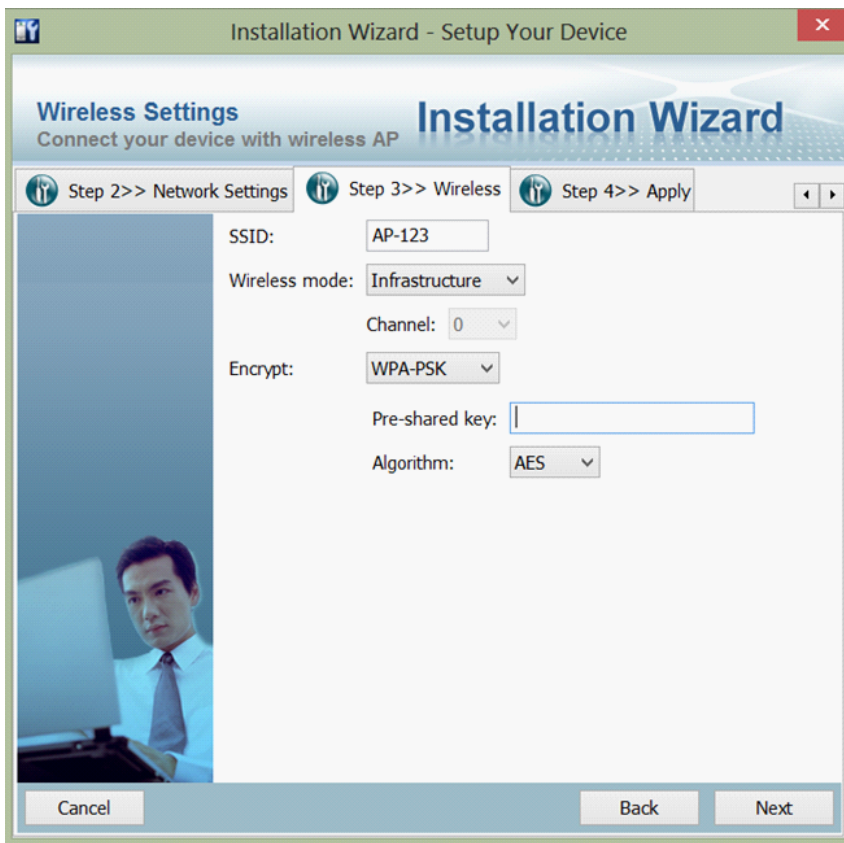
1. DHCP: Selecting the "Get IP by DHCP Server automatically" checkbox will force the device to renew its IP address whenever it reboots, and the related network configuration is provided by the DHCP server.
2. Fixed IP: If you want the device to use a fixed IP, please deselect the "Get IP by DHCP Server automatically" checkbox and assign a valid IP address, subnet mask, default gateway and DNS server for the device.

2.2.2.3 Wireless setting

Even if you still click on "No" in the "Network Type" dialog at the step 2.2.2.2 LAN Setting (Page 15), you can configure wireless settings manually.

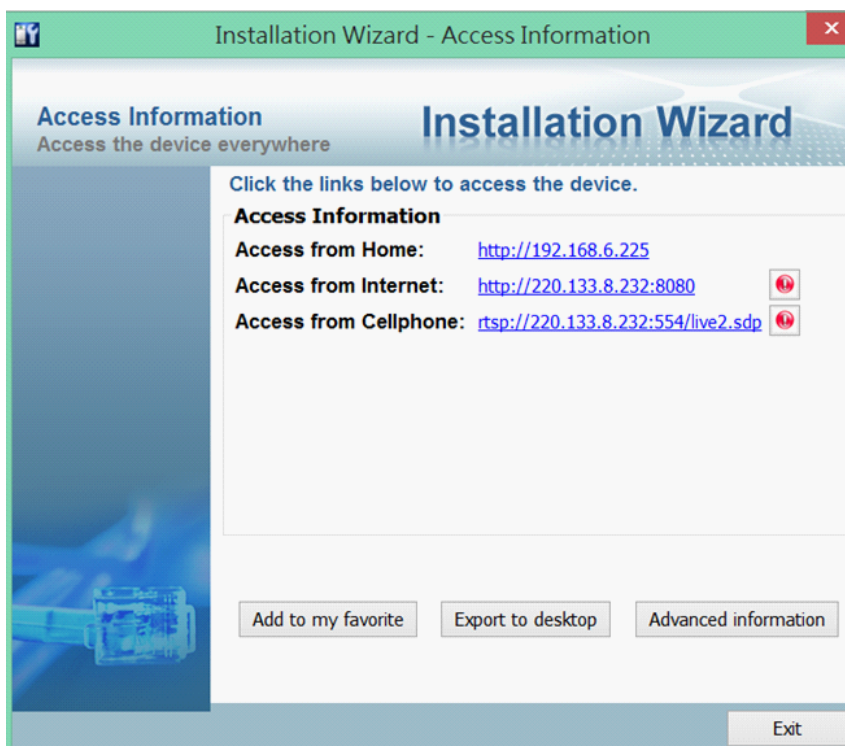


2 Using Installation Wizard



You can enter SSID, wireless mode, channel and encrypt information. Depending on the connection quality of your wireless network, it may take several minutes to apply the process.

2.3 Access Information

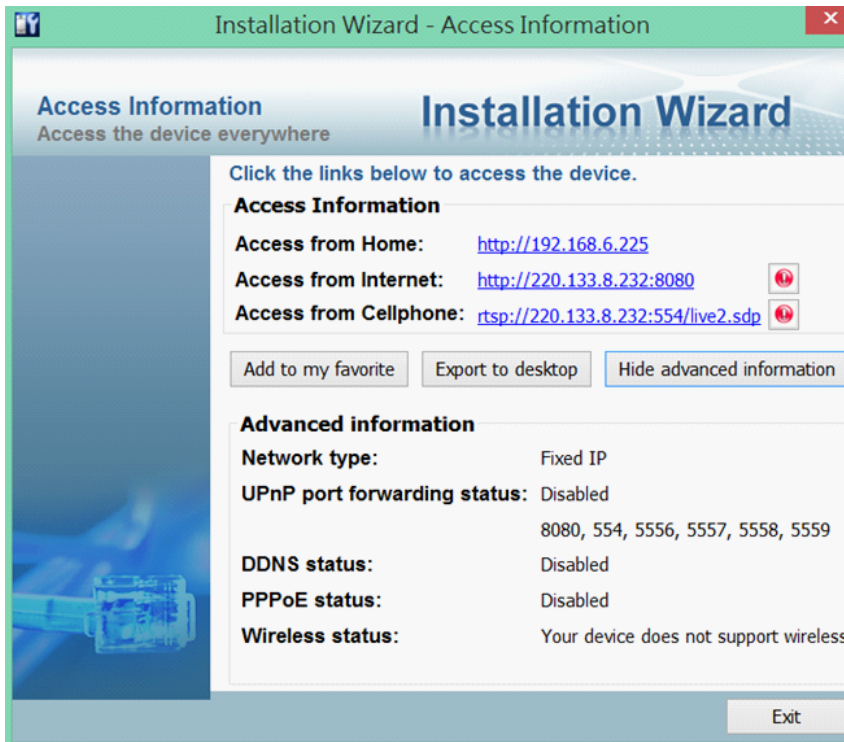


The access information page shows you all the information about how to access the server. There are three access types:

1. **Access from Home:** If you access the camera from home, you can use the domain name (or IP address) and port number (if the http port is not 80) for access to the camera.
2. **Access from Internet:** If you access the camera from Internet, or you want to share the access to the camera with another user, you should use this IP Address (or domain name) and port. If the server is behind a router, it will check whether the UPnP or port mapping is enabled. If the UPnP and port mapping is not available, it will display a red "Warning Icon" after the link. If the "Warning Icon" appears after the link, the camera cannot be accessed from Internet.

2 Using Installation Wizard

3. Access from Cell phone: If your camera supports RTSP streaming, a link will be displayed for you to access using QuickTime® or players that support RTSP protocol (such as a 3GPP Mobile Phone). You can access the camera's video feed via this link.



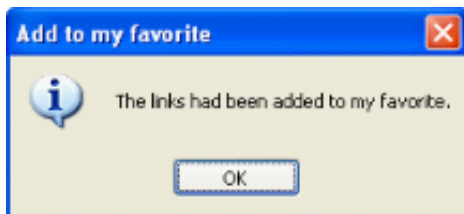
In the access information page, you can click on the "Advanced Information" to get more information.

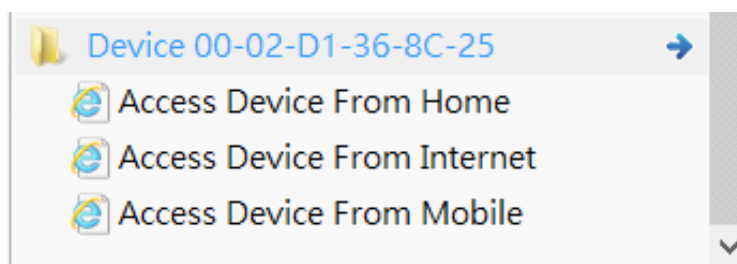
1. Network type: The network type for access to the camera, it could be PPPoE, DHCP, or Fixed IP.
2. UPnP status: The UPnP status. It could be Disabled, Success, or Failed.
3. DDNS status: The DDNS status. It could be Disabled, Success, or Failed.
4. PPPoE status: The PPPoE status. It could be Disabled, Success, or Failed.
5. Wireless status: If your device supports wireless connection, the status will be Connected or Disconnected. If the device does not support wireless connection, it will be stated as "unsupported."

For cameras that do not have information for certain fields in the advanced information, "Unknown" is shown in some status fields.

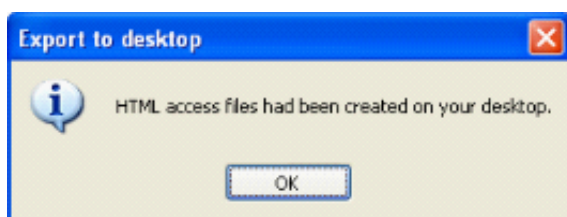
Two function buttons: "Add to my favorite" and "Export to desktop" are available on this page:

1. "Add to my favorite" is for you to add the Access Information to your browser's bookmarks. It helps preserve the links for access to the camera.





2. "Export to desktop" will generate an HTML file on your desktop, and you can open this file by your browser and see the access information for this camera.

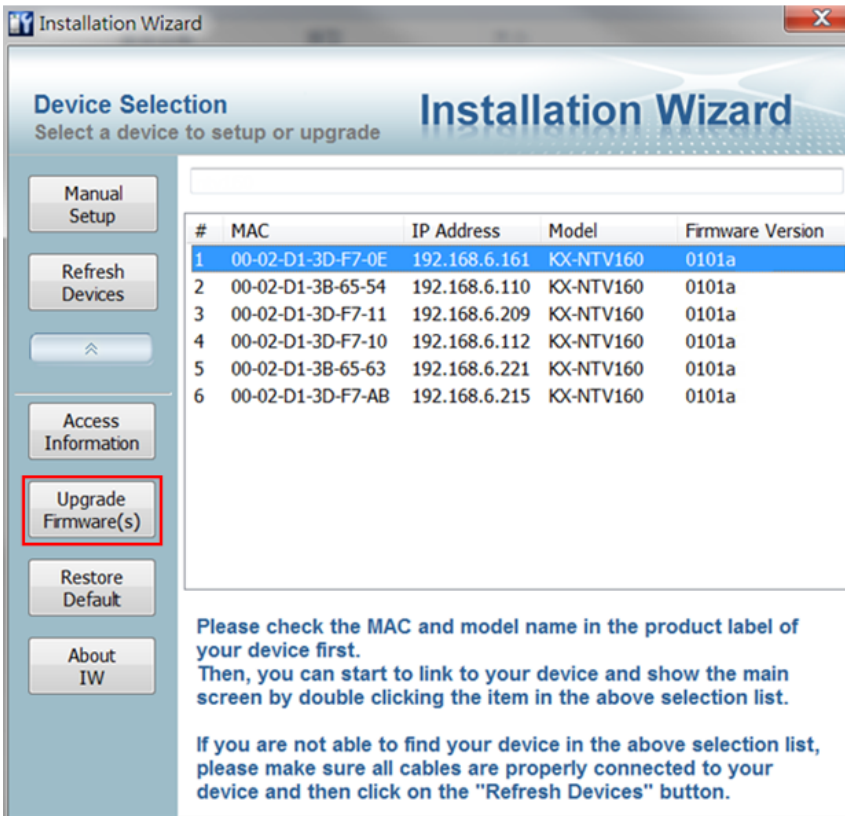


g/Desktop/Device_00-02-D1-36-8C-25.html

Access your camera 00-02-D1-36-8C-25	
Access from Home	http://192.168.6.225
Access from Internet	http://220.133.8.232:8080
Access from mobile	rtsp://220.133.8.232:554/live2.sdp

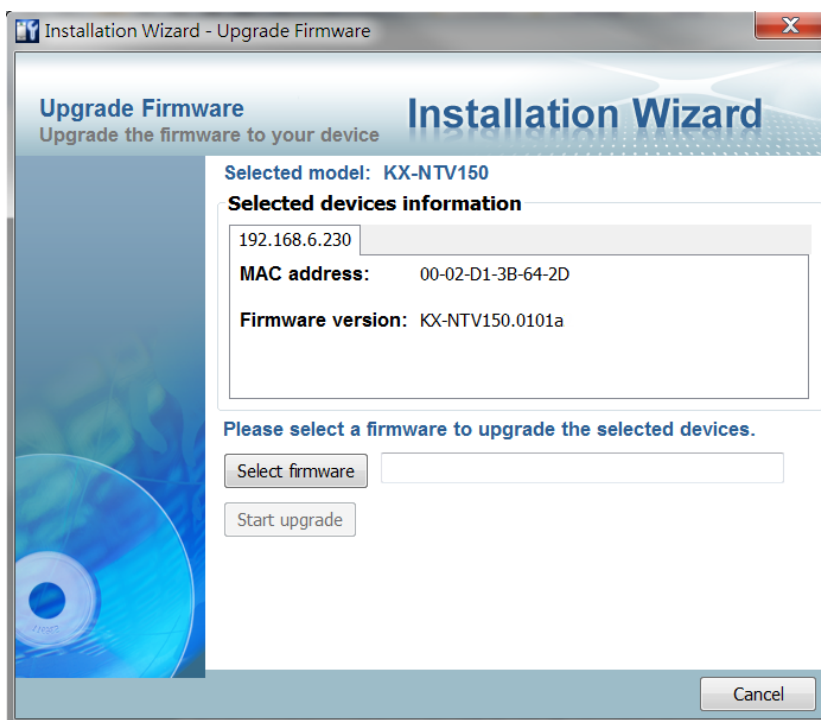
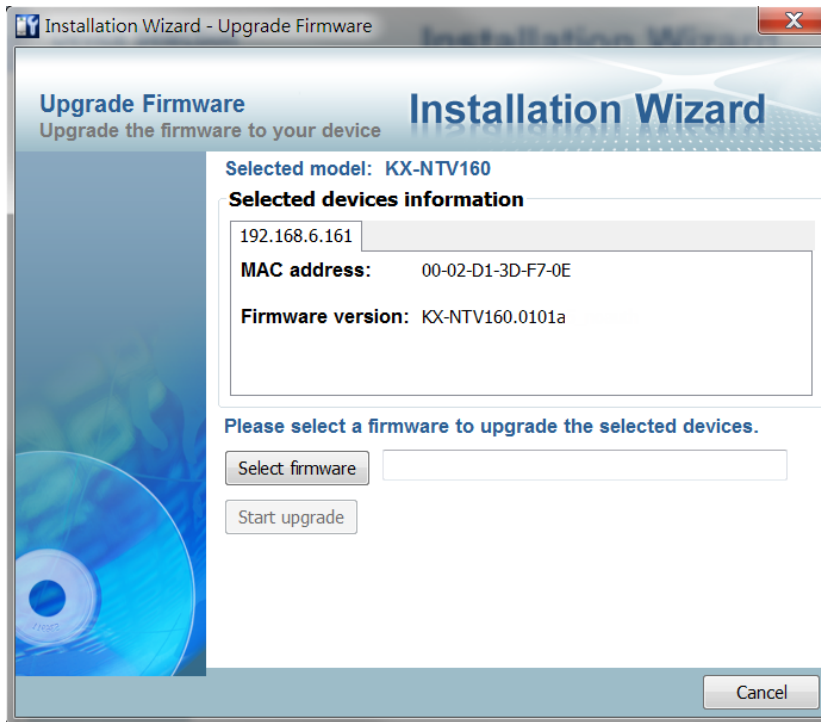
2.4 Upgrade Firmware(s)

When you select one or multiple devices (of the same model), the "Upgrade Firmware(s)" button will be enabled. Click on it to upgrade the firmware of the selected device(s). The IW will try to connect the selected camera(s) and guide you through the upgrade firmware(s) process.



2.4.1 Device Information

When connected to the selected camera(s), the Upgrade Firmware(s) panel will display as shown below. If you select more than one camera, then the information for all cameras will be shown. You can switch to individual camera information by clicking on the tabbed panel.



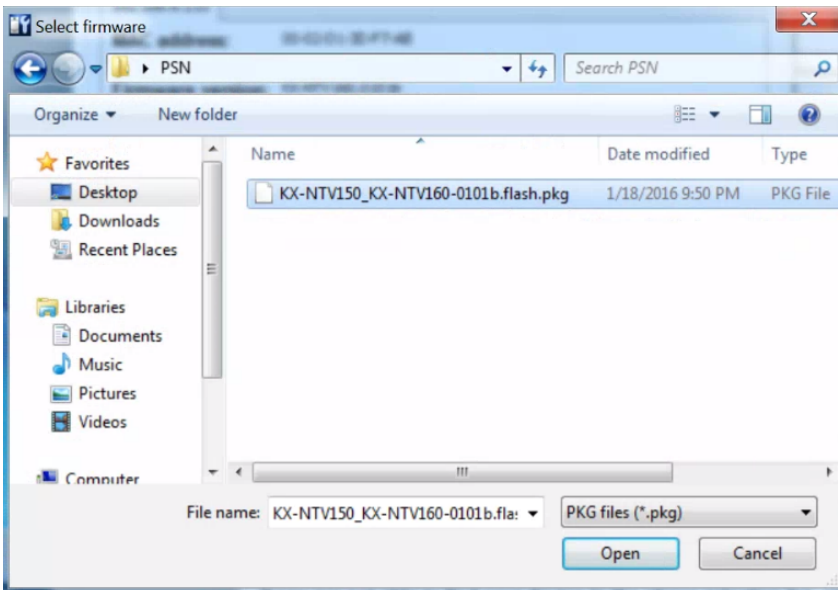
2.4.2 Firmware Information

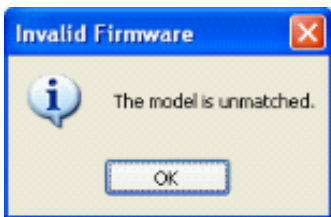
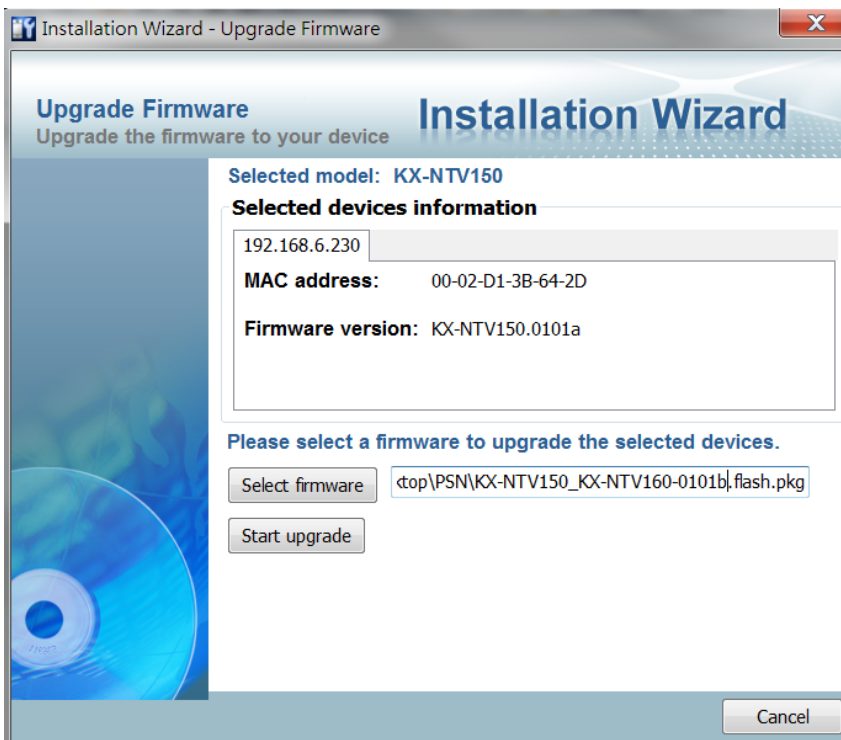
The selected firmware information will show the information about the package file that you selected.

- Firmware version: The revision number of the selected firmware.

2.4.3 Select Firmware

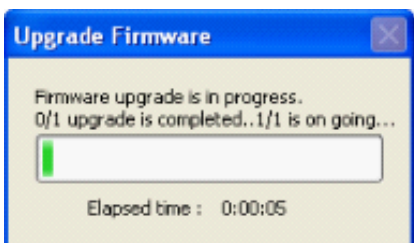
You can use the "Select firmware" button to browse for the file that you want to upload to the selected camera(s). When the firmware file is selected, IW will examine whether the file you selected is correct. If it is the correct version, then more information about the package will be displayed and the "Start Upgrade" button is enabled. You can then click on the button to upgrade the firmware. If not, a warning message will be displayed.



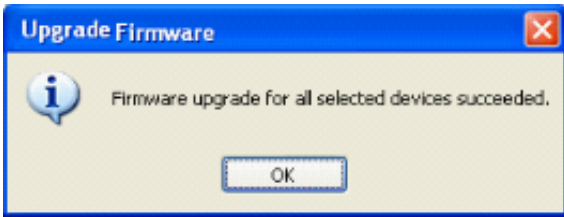


2.4.4 Start Upgrade

Click on the "Start Upgrade" button to upgrade the firmware of the selected device(s). A dialog box will be displayed showing the progress of the upgrade process. It takes about 5 to 10 minutes to complete the upgrade process. Depending on your camera model and network bandwidth, we recommend you perform the upgrade process in a wired LAN environment rather than a PPPoE or wireless environment.



When the upgrade process is done, a confirm message will be displayed. Click "OK" to end the process.



2.4.5 Upgrading Firmware for Multiple Cameras

The firmware of multiple cameras of the same model can be upgraded in one procedure. Below is the sample process. The upgrade firmware task can be performed on a maximum of 16 cameras.

1. Select multiple cameras using the key combination of Shift and left mouse clicks.

Setup	#	MAC	IP Address	Model	Firmware Version
Refresh Devices	1	00-02-D1-3D-F7-11	192.168.6.209	KX-NTV160	0101a
	2	00-02-D1-3D-F7-10	192.168.6.112	KX-NTV160	0101a
	3	00-02-D1-3D-F7-AB	192.168.6.215	KX-NTV160	0101a
	4	00-02-D1-3D-F7-0E	192.168.6.161	KX-NTV160	0101a
	5	00-02-D1-3B-65-63	192.168.6.221	KX-NTV160	0101a
	6	00-02-D1-3B-65-54	192.168.6.110	KX-NTV160	0101a
Access Information	7	00-02-D1-3B-64-2D	192.168.6.230	KX-NTV150	0101a
	8	00-02-D1-3E-0F-F2	192.168.6.118	KX-NTV150	0101a
Upgrade Firmware(s)	9	00-02-D1-3E-0F-46	192.168.6.145	KX-NTV150	0101a
	10	00-02-D1-3B-64-28	192.168.6.128	KX-NTV150	0101a

2. Cameras selected will be displayed on a tabbed panel.

Selected model: KX-NTV150

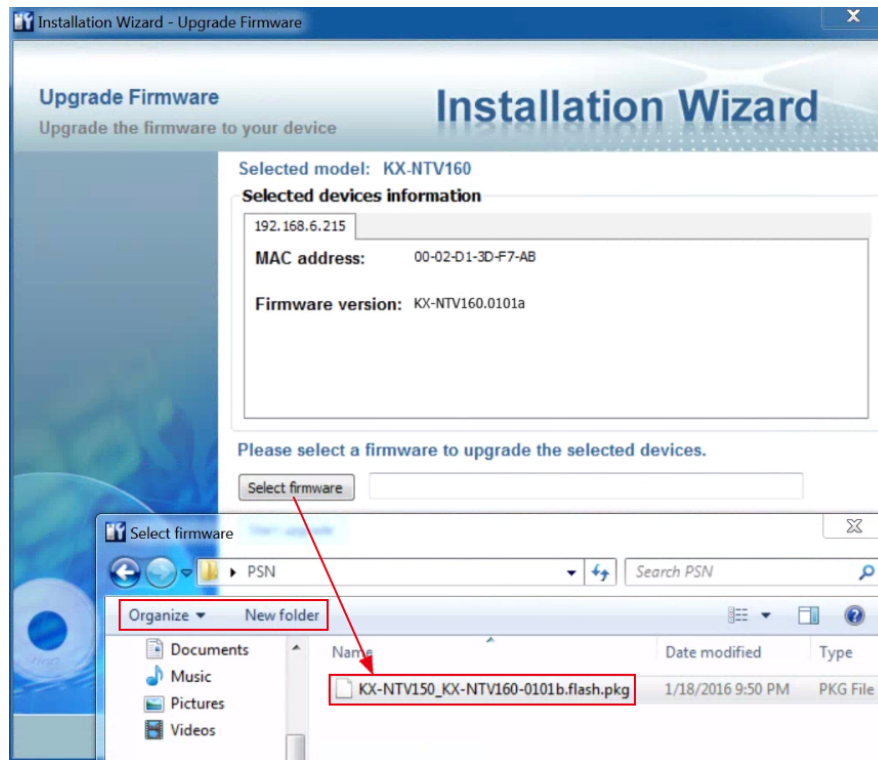
Selected devices information

192.168.6.118

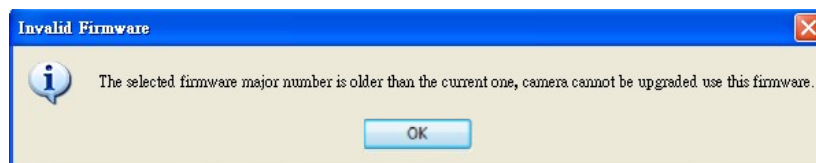
MAC address: 00-02-D1-3E-0F-F2

Firmware version: KX-NTV150.0101a

3. Click on the Select firmware button to locate a firmware package file (usually comes in the *.pkg file format).

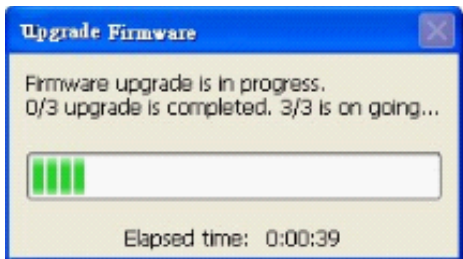
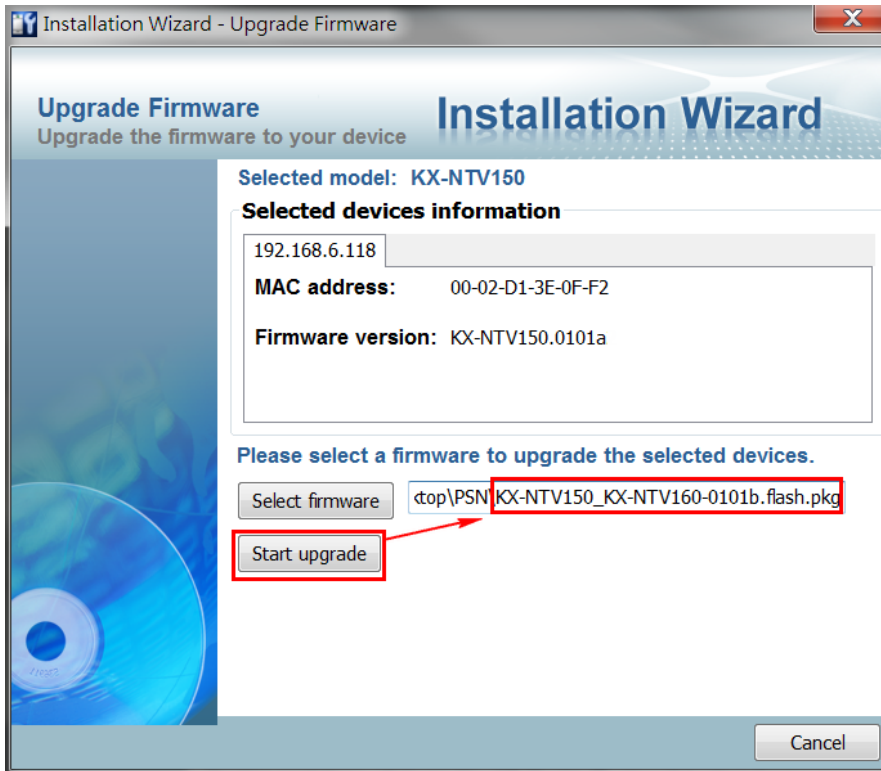


4. If you select a wrong type of firmware, e.g., firmware for a different model, the IW will display a warning message. Contact technical support or check on Panasonic's website for an appropriate release of firmware.

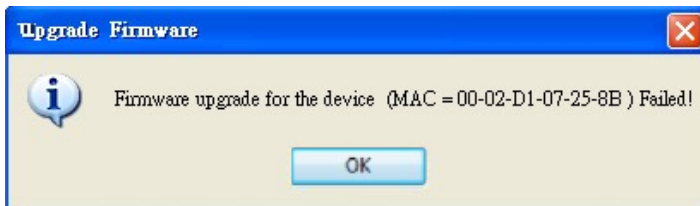


2 Using Installation Wizard

- Once an appropriate firmware is selected, click on the "Start upgrade" button. A progress window will be displayed. Wait for the upgrade to complete.

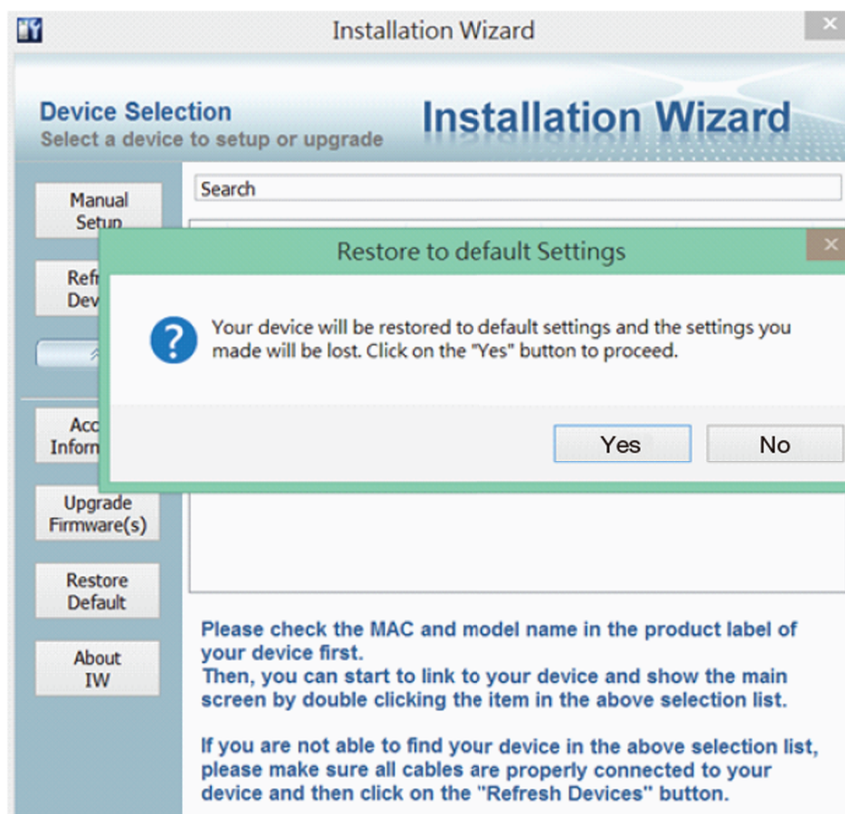


- Below are the messages that might appear after the upgrade.



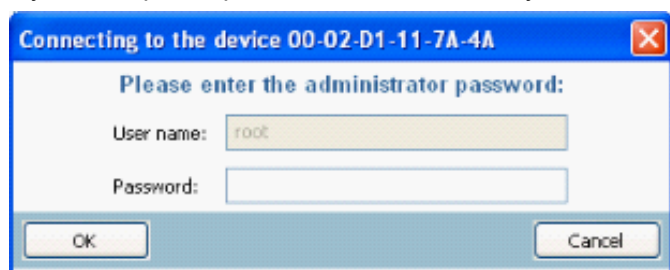
The IW will display a warning message. Contact technical support or check on Panasonic's website for an appropriate release of firmware.

2.5 Restore Default

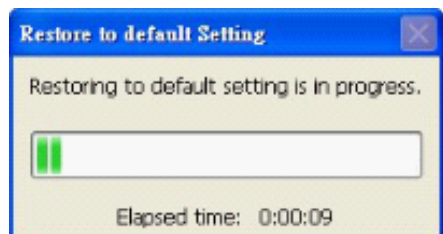


The restore default function erases user's settings, such as preset locations, Host name, image preferences, Motion Detection, Privacy Mask, etc., and restores factory default settings. To restore defaults for a camera:

1. Left-click to select a camera, and click on the Restore Default button.
2. Click "Yes" to proceed. Note that your previous configuration on the camera will all be lost.
3. If you have preset password for the camera, you will need to enter the password for the administrator login.

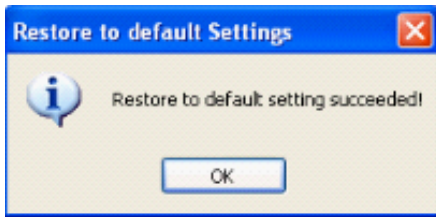


4. The progress bar will be displayed, and the process may take up to several minutes.

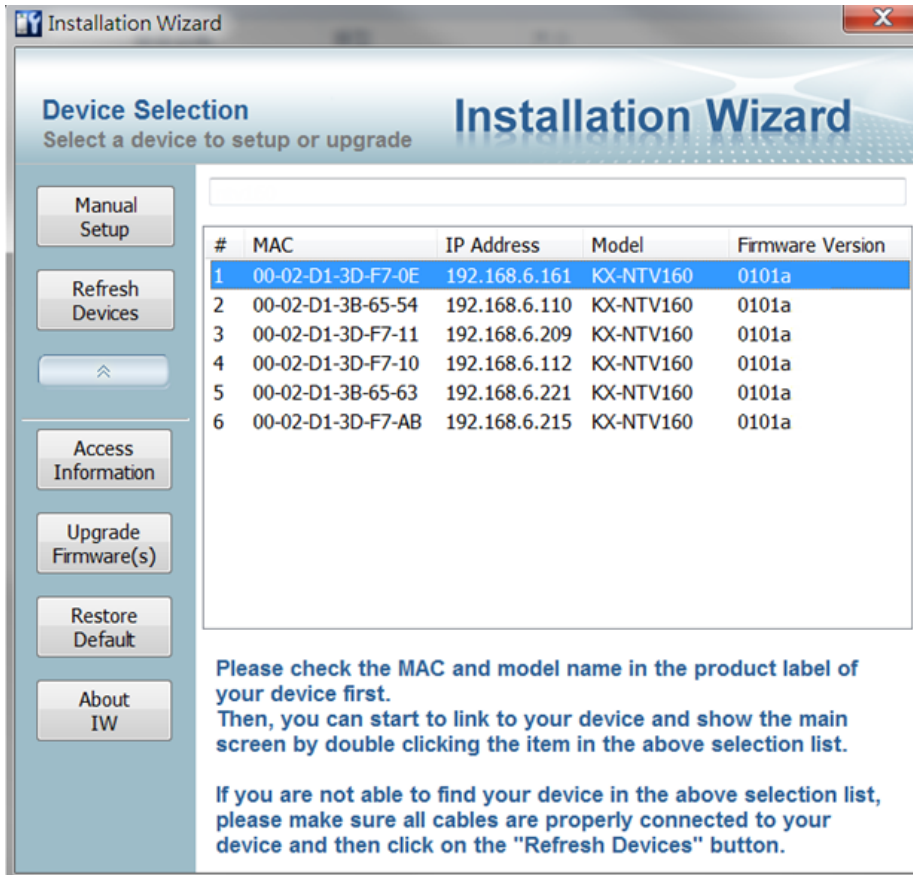


2 Using Installation Wizard

5. Click "OK" to end the process.



6. You can now open a management session with the camera to re-configure it.



Panasonic System Networks Co., Ltd.

1-62, 4-chome, Minoshima, Hakata-ku, Fukuoka 812-8531, Japan

Copyright:

This material is copyrighted by Panasonic System Networks Co., Ltd., and may be reproduced for internal use only. All other reproduction, in whole or in part, is prohibited without the written consent of Panasonic System Networks Co., Ltd.

© Panasonic System Networks Co., Ltd. 2016

PNQX7587ZA PP0116YY0