



# **BED BUG KIT**

**Here's a simplified step-by-step guide for preparing a room by removing clutter and treating items for bed bugs:**

## **Step 1: Day 1**

### **1. Decluttering:**

- Remove items not needed or wanted.
- Bag all clothes and linens and remove them from the room.

### **2. Floor Preparation:**

- Clear clutter off the floor to allow thorough treatment.

### **3. Prevent Transfer:**

- Be cautious not to spread bed bugs to other rooms.

### **4. Mattress and Box Spring:**

- Discard if heavily infested or in bad shape.

### **5. Bedding and Garments:**

- Wash and dry infested bed sheets and garments on high heat.
- Discard if unable to treat.

## 6. Personal Items:

- For severe infestations, contain infested personal items (stuffed animals, soft toys, blankets, books) in an airtight bin.
- Add vapor strips to the bin to eliminate bed bugs on these items.

**Remember, thoroughness and care are essential in effectively dealing with bed bug infestations.**

## **STEP 2: DAY 1 Wash and Dry All Clothing and Linens**

- Wash and dry all clothing and linens (Laundromat is highly recommended) before they are returned to the room after there has been no evidence of bedbugs for 30 days.
- Failure to make sure all items being returned to the room are bedbug free may cause reinfestation.

## **• STEP 2A: ALPINE FLEA AND BED BUG AEROSOL & BEDLAM PLUS**

- Thoroughly Treat Cracks, Crevices, Voids, Fabric Seams and Folds

---

To effectively tackle a bed bug infestation, it's crucial to utilize products labeled for each area thoroughly. This means treating cracks, crevices, voids, and fabric seams and folds as comprehensively as possible. Our recommendation for a comprehensive approach is to use "Our Bed Bug Kit." This kit offers the most value for your money and includes all the necessary components for a highly effective bed bug treatment.

We strongly advise using a variety of methods and products to ensure that bed bugs are completely eliminated from infested areas. Relying solely on one product or method is often insufficient because bed bugs can develop resistance to certain products, and they may also avoid areas that have been treated with specific products.

By employing a multifaceted approach and using a range of products included in “Our Bed Bug Kit,” you can increase the likelihood of successfully eradicating the infestation and preventing any potential resistance buildup. Remember to follow the instructions carefully and be thorough in your treatment efforts to achieve the best results.

## STEP 2B: Demand Duo & Gentrol IGR

- Mix ( Demand Duo 1 oz with 1oz of Gentrol) into 1 gallon of water
- Spray around all baseboards in the entire house focusing on the area that is most infested.

## STEP 3: CIMEXA DUST

It seems like you’re describing a procedure for using Cimexa Dust to treat for bed bugs or other pests. Cimexa Dust is a desiccant dust that is commonly used for pest control, including bed bug infestations.

Here’s a step-by-step breakdown of the process you’ve outlined:

1. Prepare the Room: Identify the room with the most pest activity, likely where you’ve observed bed bugs or other pests.
2. Remove Faceplates and Electrical Outlets: Before applying the Cimexa Dust, you need to remove the faceplates or covers from electrical switches and outlets in the room. This is to access the areas where pests might hide.
3. Prepare the Cimexa Dust: Remove the black tip from the Cimexa Dust bottle and cut the tip with scissors. Make sure to remove any plastic seal or covering from the container before use.
4. Shake Well: Shake the Cimexa Dust bottle well to ensure an even distribution of the dust.
5. Apply the Dust: Squeeze the bottle to release the Cimexa Dust into the wall voids or electrical outlets where pests might hide. Apply the dust generously but evenly.
6. Wait for the Dust to Settle: Allow the dust to settle after application. This may take some time depending on the amount applied and the ventilation in the room.
7. Replace Faceplates: Once the dust has settled, put the faceplates or covers back on the electrical switches and outlets.

8. One-Time Use: The procedure described seems to imply that this is a one-time treatment. Cimexa Dust is typically effective for a long period, often up to a year or more.

## • **STEP 4: Bifen I/T** 16 oz. bottle

### Measure, Mix, and Spray

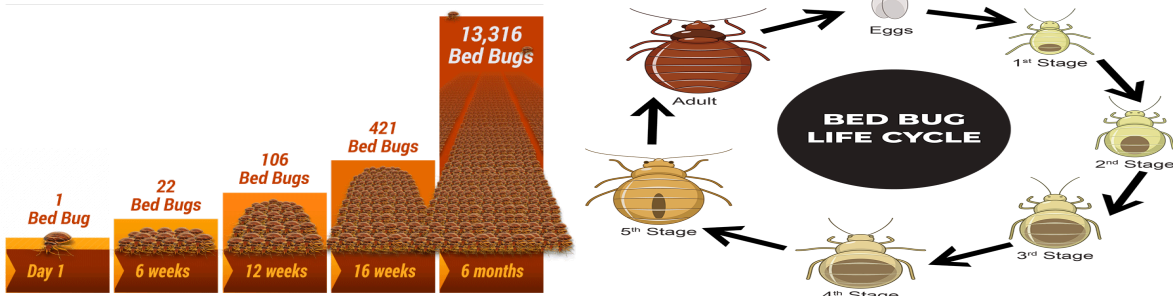
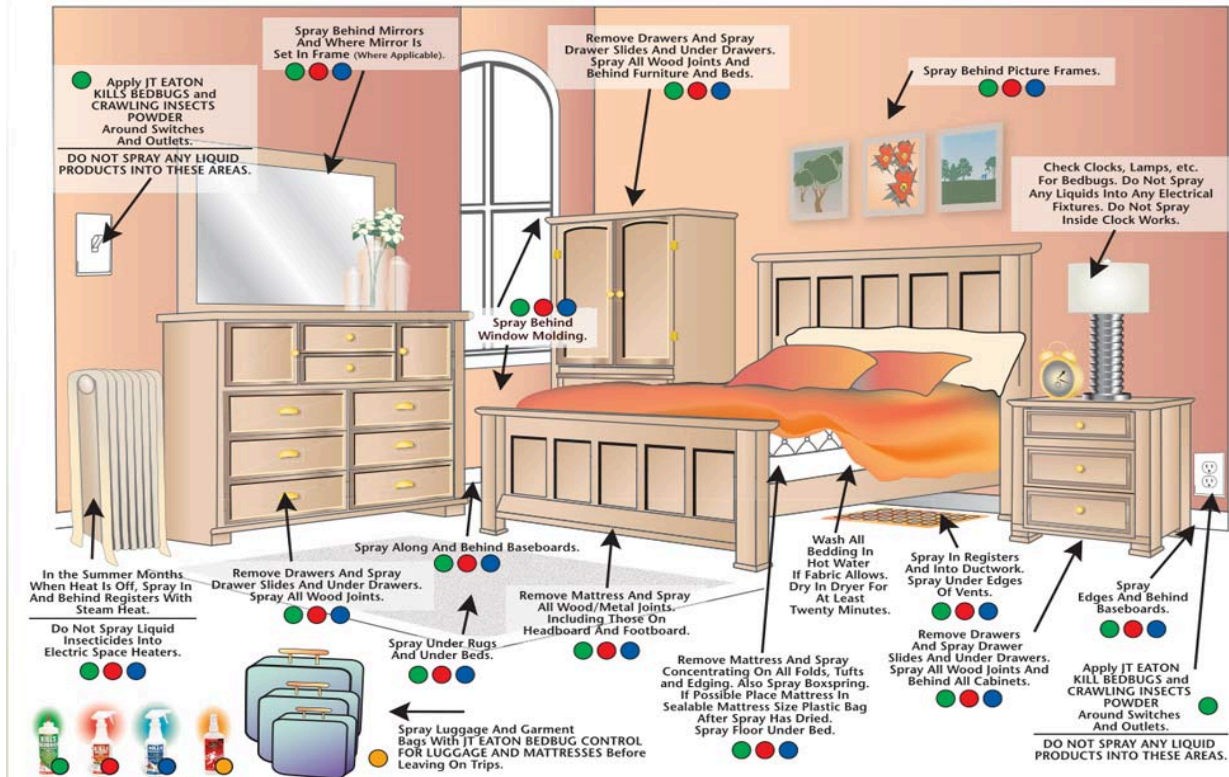
#### Dilution Rates

- Add **3 oz.** into **1 gallon** of water
- Add product when filling the spray tank with water! Screw the top on tight and shake well before use
- Diluted spray mixture can be stored overnight. Shake well before using
- Re-apply every **7 days at least**
- Spray around all baseboards in the entire house focusing on the area that is most infested.

## **STEP 5: REPEAT! REPEAT! REPEAT!**

You must repeat **STEP 2A, STEP 4, Every 7 - 10 days** until no one is getting bitten and there is no further evidence such as live bugs, cast skins or fresh blood spots found. This is absolutely crucial! Depending on the severity of the infestation it can take a minimum of **7 - 8 weeks**, including repeat treatments. Failure to be thorough can prolong the bed bug control process and can make it harder to eliminate them.

## MOST EFFECTIVE AREAS TO APPLY KILLS BEDBUGS PRODUCTS



**DIY Pest and Lawn 386-774-2847**

**2417 Enterprise Rd., Orange City, FL 32763**

**WARRANTY AND CONDITIONS OF SALE** Seller makes no warranty, expressed or implied, concerning the use and handling of this product other than indicated on the label. Buyer assumes all risk of use and handling of this material when such use and handling are contrary to label instructions.