



Bifen I/T Roach Kit



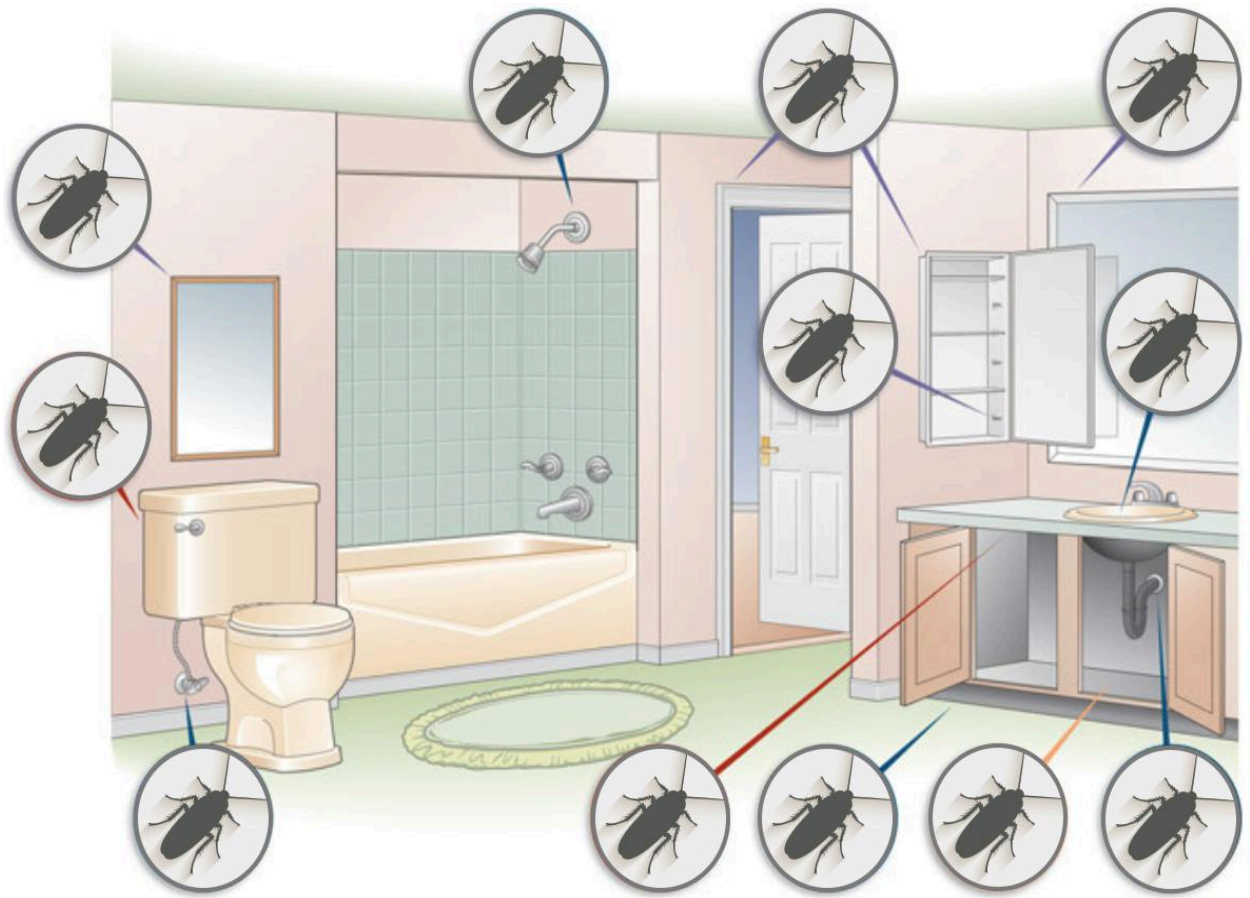
Bifen I/T and Gentrol IGR

1st Time mix 2 oz of Bifen I/T + 1 oz Bottle of Gentrol IGR with 1 gallon of water into a pump sprayer. Treat the interior of home along baseboards under kick plates in the kitchen, behind the stove, under the dishwasher, and behind the refrigerator. Treat the garage as well as the entire exterior perimeter of the home. (As for the exterior perimeter, spray 2 ft. up the wall of home and 2 ft. off the wall of the home) also around the faucets, dryer vents, windows, eaves and anything that may be close to or touching the exterior of the home including such as: trees, brush, and plants, etc.

Day 7, 14, use 1 oz. of Bifen I/T / 1 gal of water, treat the same locations.



After the initial problem is taken care of, treat it once every three months.



DIY Pest and Lawn - 386-774-2847

2417 Enterprise Rd., Orange City, FL, 32763

WARRANTY AND CONDITIONS OF SALE - Seller makes no warranty, expressed or implied, concerning the use and handling of this product other than indicated on the label. Buyer assumes all risk of use and handling of this material when such use and handling are contrary to label instructions.