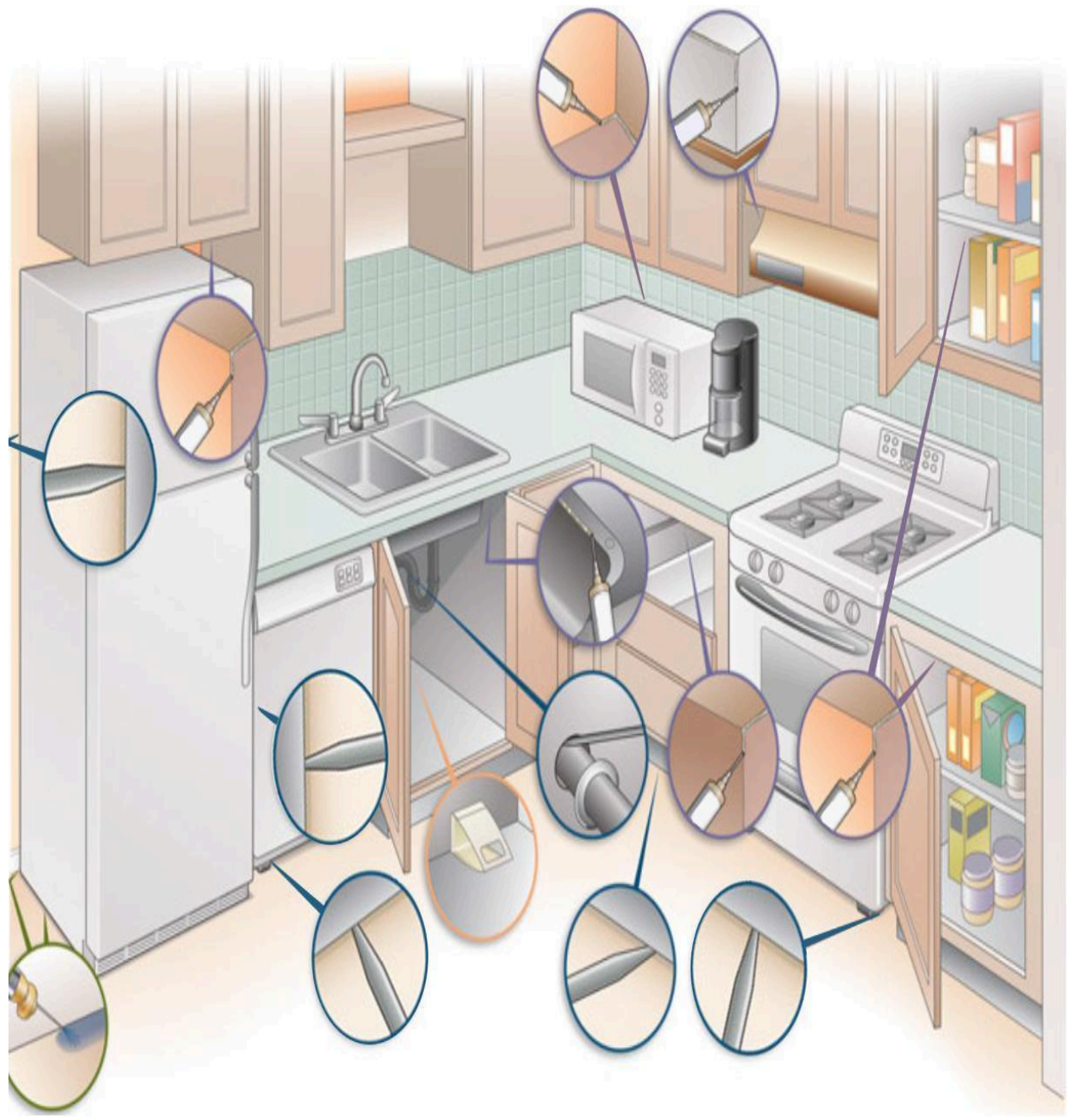


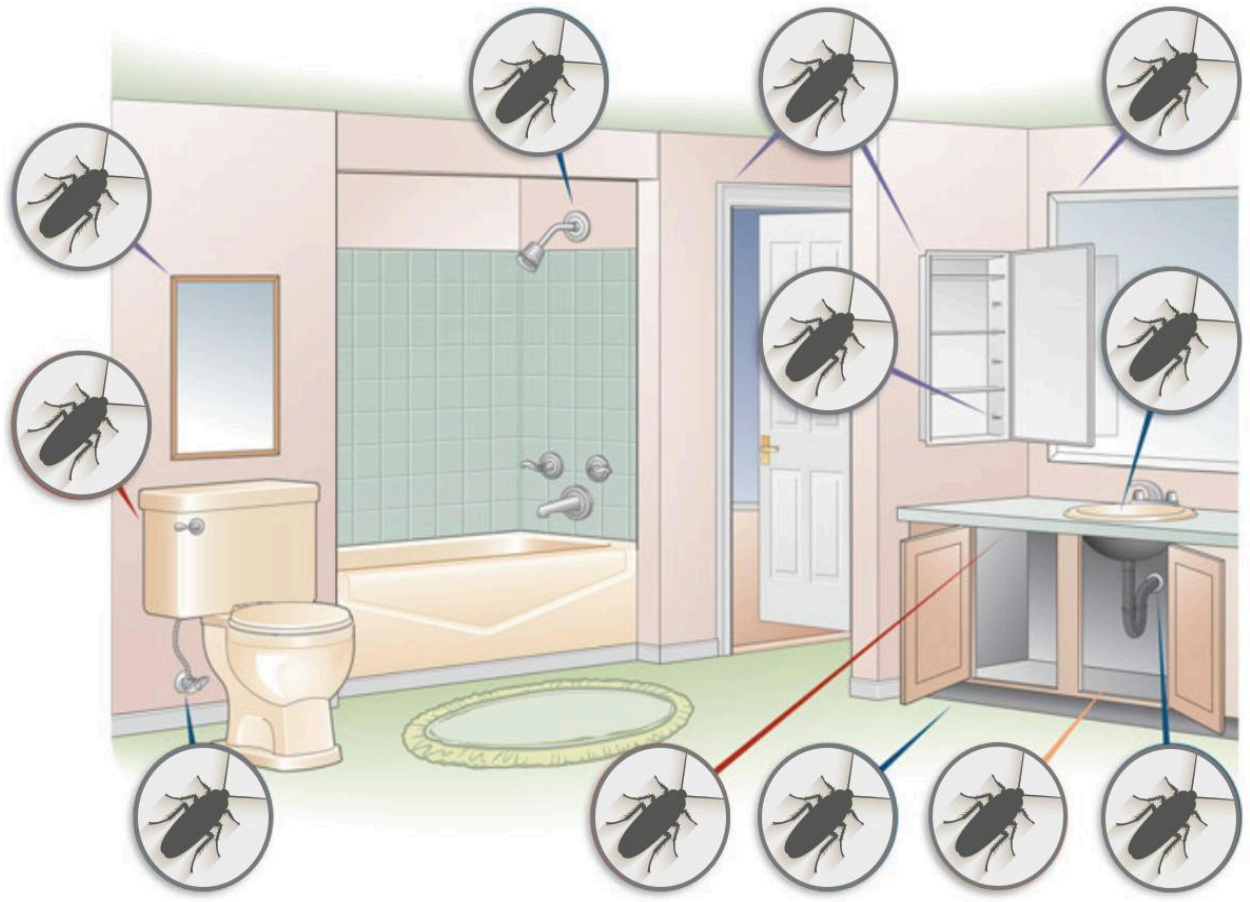


Cockroach Bait - Apply to cabinet hinges, underneath counter tops, on the piping under the kitchen and bathroom sink, small openings and cracks etc. Appropriate application calls for .5 grams every 2 or 3 ft. These lines should be about **1/2 inch to 1 inch** _____ **in length**. Clean up and reapply every 14 days or whenever the bait dry's!

Repeat on days 7, and 14. After the initial problem is taken care of, treat it once every three months.

Storage of Gel Type Baits - Store in a dry cool environment.





DIY Pest and Lawn - 386-774-2847

2417 Enterprise Rd., Orange City, FL, 32763

WARRANTY AND CONDITIONS OF SALE Seller makes no warranty, expressed or implied, concerning the use and handling of this product other than indicated on the label. Buyer assumes all risk of use and handling of this material when such use and handling are contrary to label instructions.