

WELCOME TO

CAMP



KANAWAN

THIS VIEW IS WAITING FOR YOU



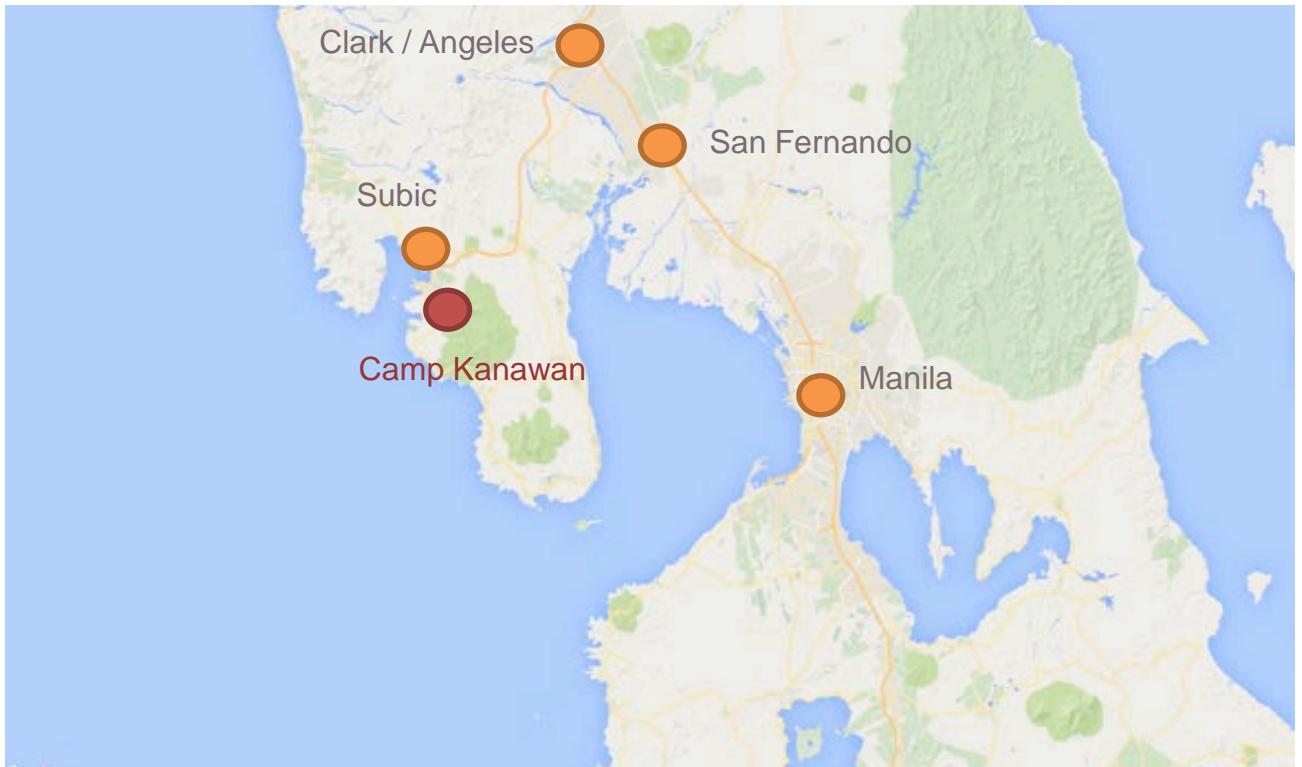
WHAT IS CAMP KANAWAN?

Camp Kanawan is a leisure camp for lovers of adventure, nature, a little bit of history. Occupying 11 grassy hectares on top of a plateau in Morong, Bataan, Camp Kanawan is ideal for team building activities, company outings, and custom events, set against the backdrop of some of the most breathtaking scenery just outside Manila.

Camp Kanawan was once a refugee camp for Indo-Chinese Refugees during the 1980s. The refugees built Buddhist temples and monuments, which are now lost in the jungles of Camp Kanawan. Part of the thrill is exploring the area on foot, because you just might chance upon a forgotten temple, which you have to see in order to believe!

LOCATION

Camp Kanawan is located in Morong, Bataan, about 3 hours drive away from Manila, and 30 minutes drive away from Subic. We are located inside the compound of Bataan Technology Park.



IF YOU ARE DRIVING...

From Manila, take NLEX to Clark
From Clark, take SCTEX to Subic
From Subic, exit through Subic's Morong Gate
Take UN Avenue up the mountain to Bataan Technology Park
Camp Kanawan is inside Bataan Technolgy Park.

IF YOU ARE COMMUTING...

Take a bus from Pasay or Cubao to Olongapo
Take Yellow Jeep from Olongapo to Harbor Point Mall in Subic.
Take Minibus from Harbor Point Mall to Morong, Bataan
Get off at Hill Top, and take a tricycle to Bataan Technology Park
Camp Kanawan is inside Bataan Technology Park

KAI LODGE



Kai Lodge is Camp Kanawan's hostel accommodation for the young and adventurous. It has a mix of barkada rooms, and private rooms. We also have huts, a nice garden, and a colorful lounge where you can play board games. The whole facility has WIFI access.

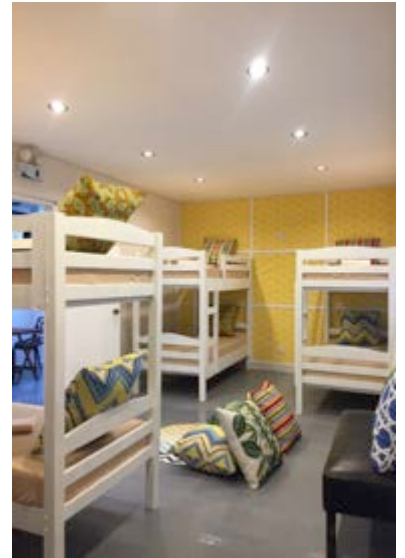
Kai Lodge has three barkada rooms that can accommodate anywhere from 6 to 15 people. Restrooms are common, so be kind to your roommates, and don't make a mess.



For more privacy, you may also book any of our 6 private rooms. Private rooms have their own restrooms, living area, and Cable TV. Each private room can fit 2 to 3 people.



PINEAPPLE HOUSE



The Pineapple House is the cutest house in the whole of Bataan. It is a pineapple themed vacation house with two large barkada rooms that can fit 14 people. It has Cable TV and WIFI access.

It also has a full kitchen, dining area, and lounge. You can cook in the Pineapple House, just bring your own food, and of course, somebody who knows how to cook.



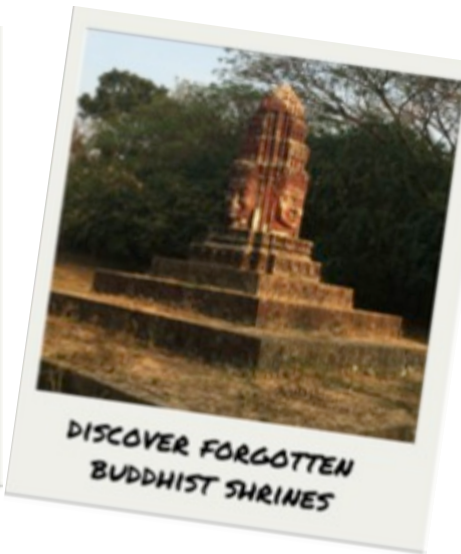
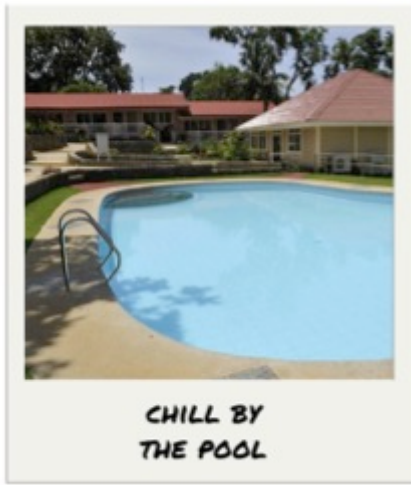
SAGE LEAF HOTEL



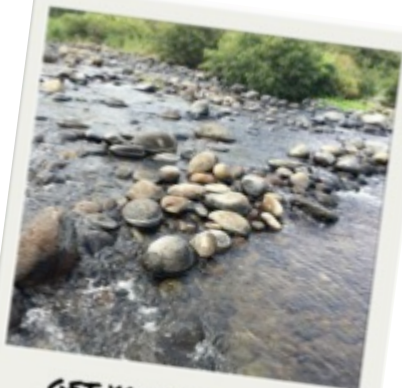
Sage Leaf Hotel is Camp Kanawan's premium accommodation, for those who value relaxation and privacy. We have 12 hotel rooms, located just steps away from an adult swimming pool, and a kiddie pool, Each room has a private restroom, living area, Cable TV, and WIFI access.



WHAT TO DO IN CAMP KANAWAN?



THERE'S MORE TO DO NEARBY



GET YOUR FEET WET
IN A MOUNTAIN STREAM



TAKE A SUNSET STROLL
ON THE BEACH



SELFIE ON A
HANGING BRIDGE



TREK THROUGH
THE MOUNTAINS



HIKE TO KAIRUKAN FALLS,
THEN DIVE IN!



PLAY WITH AETA KIDS AT
THE KAHAWAN VILLAGE



EAT AUTHENTIC
VIETNAMESE FOOD



ENTER A 400
YEAR OLD CHURCH



VISIT THE PAWIKAN
CONSERVATION CENTER

WE HOPE TO SEE YOU SOON!



And when you get here, post about your adventure on your social media accounts, and share it with the world! Don't forget to tag us, or use our official hashtag, #campkanawan. Your post will go a long, long way. Thanks a bunch! 😊

FOR RESERVATIONS



09189455253 / 9381195



inquiry@equinetravel.com