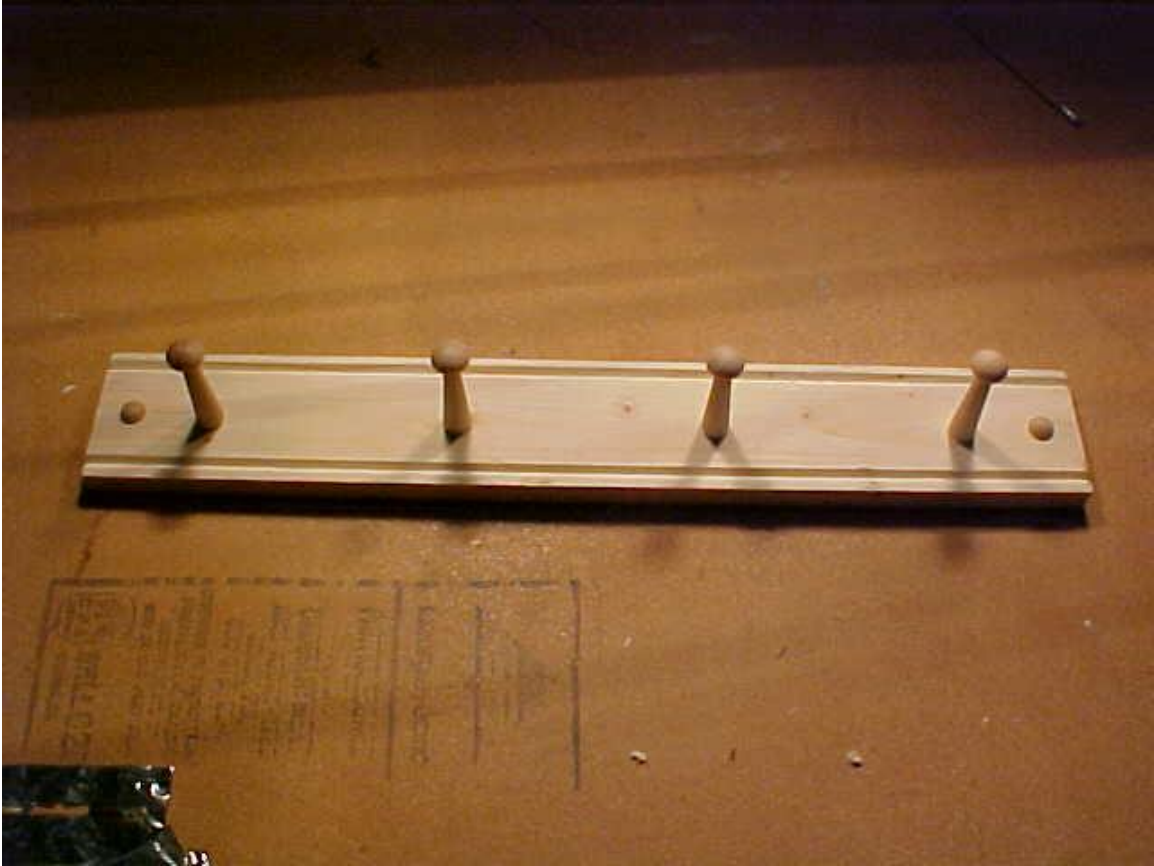




Shaker Style Pegboard



The Shaker style pegboards' dimensions are: 24" Long x 3 ½" High

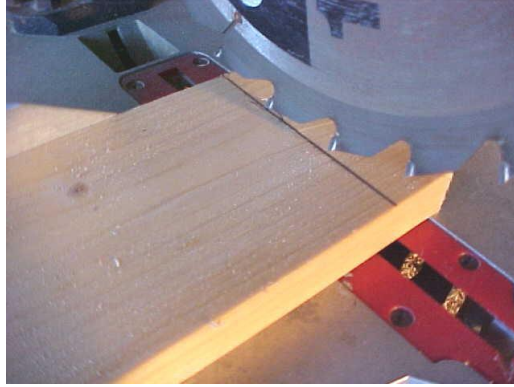
This stylish pegboard has many uses around the home. It can be used to hang towels in the bathroom, hang coats in the foyer, or anywhere else in the house that things may need hanging. They can be used in the traditional Shaker style by hanging wicked candles, dried flowers, shelves, and other decorative home décor from the pegs.

<u>Materials:</u>	
<ul style="list-style-type: none"> [1] 1x4 Pine 24 inches long [4] 7/8" x 3 1/2" Wood Shaker pegs 	
	
<ul style="list-style-type: none"> [2] 1/2" wood buttons 	
	
<u>Hardware:</u>	
<ul style="list-style-type: none"> Two 2" Long sheet rock, or wood, screws. 	
<u>Tools & Supplies:</u>	
<ul style="list-style-type: none"> Interior wood glue 1/2" wood drill bit 1/8" wood drill bit Power drill Circular saw Soft mallet Tape measure Combination Square or Framing Square (carpenters' square) Sandpaper (medium to fine grit) Pencil Paint or stain 	
<u>Optional Tools:</u>	
<ul style="list-style-type: none"> Random Orbital Sander. A small palm sander with a 5" to 6" surface will do the job. Router with a 90 degree 1/2" V-Groove bit, or another decorative bit. 	
<u>Cutting List:</u>	
<ul style="list-style-type: none"> 1x4 pine cut a piece 24" long. 	

CONSTRUCTING THE SHAKER STYLE PEGBOARD:

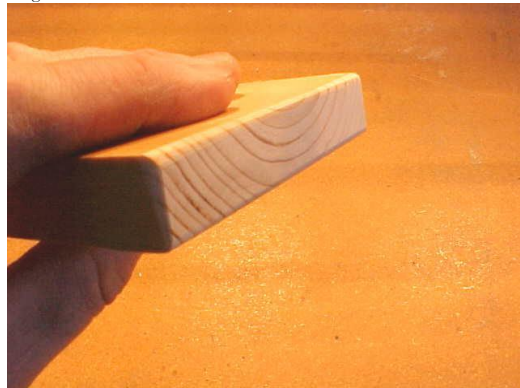
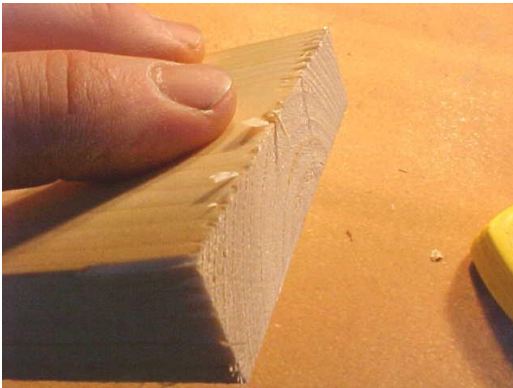
1. Cut a 1 x 4 to 24" long as seen in figure 1.

Fig. 1



2. Sand both ends of the board smooth.

Fig. 2



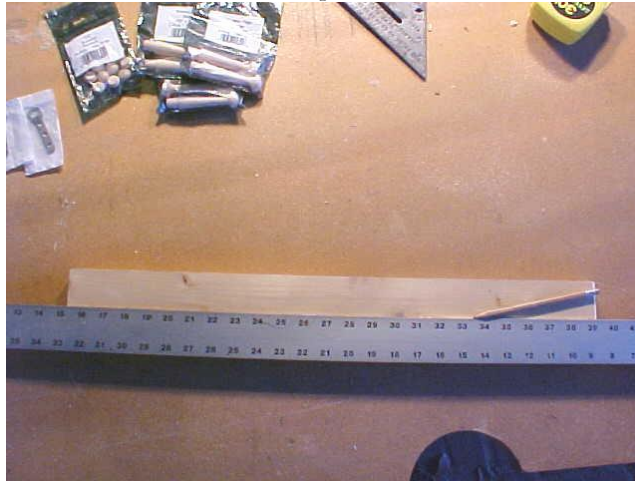
3. Make a mark at both ends at 1 $\frac{3}{4}$ " from the edge. This should be dead center as a 1 x 4 is 3 $\frac{1}{2}$ " wide.

Fig. 3



4. Using a metal straight edge draw a straight line across the length of the board using the marks from step 3 as reference.

Fig. 4



5. Measure from one end of the board and make a mark on the line from step 4 at 3 inches, 9 inches, 15 inches, and 21 inches as seen in figure 5.

Fig. 5



6. Use a square and draw an intersecting line at each mark made in step 5.

Fig. 6



7. **Optional:** Use a router equipped with a decorative bit. I used a 90 degree $\frac{1}{2}$ " V-Groove bit to add a groove to the top and bottom edge of the face of the board. A bead bit will produce the traditional Shaker design.

Fig. 7



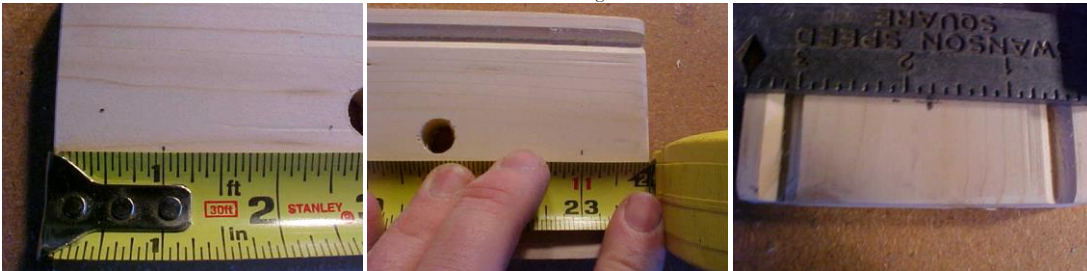
8. Use a $\frac{1}{2}$ " wood drill bit and drill through the board at each of the four intersecting marks made in step 6 as seen in the figure below.

Fig. 8



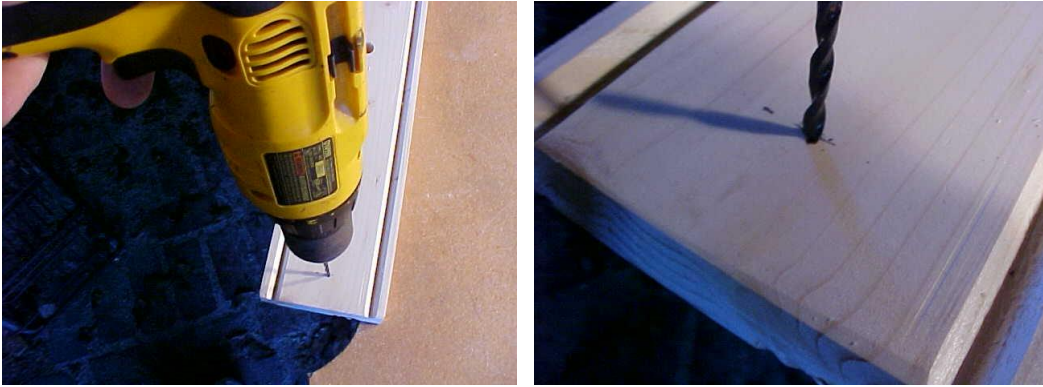
9. Using a tape measure make a mark at the 1-inch and 23-inch mark as shown below. Now measure $1\frac{3}{4}$ " down from the top and make a mark at the center of the board.

Fig. 9



10. Use a 1/8inch drill bit and drill a hole through the board at each mark made in step 9.

Fig. 10



11. Use a 1/2" drill bit to drill half way through the board at the 1/8" holes drilled in step 10. These two holes are for the mounting screws and the 1/2" wood buttons.

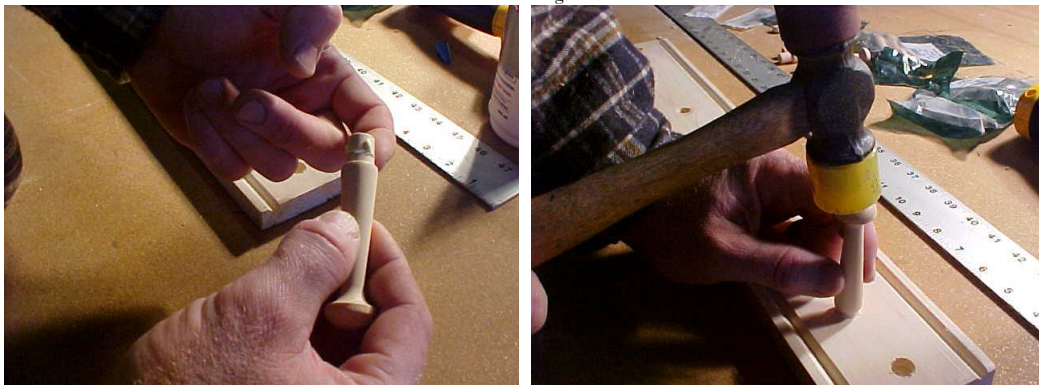
Fig. 11



12. Sand the pegboard thoroughly.

13. Apply a small amount of interior wood glue to the base shaft of the 7/8" x 3 1/2" Shaker pegs and insert them into the four 1/2" holes in the board. It may be necessary to tap the pegs in with a soft mallet.

Fig. 12



Finishing the shaker peg board:

- Paint, or stain, the completed pegboard to suite your taste. Be sure to finish the two ½" wood buttons the same as the pegboard.
- Mounting the pegboard: Use two 2" drywall screws. Insert them into the 1/8" holes drilled in step 10 and drive them through the pegboard into the wall where you want it.
- Tap the ½" wood buttons into the ½" openings to cover the screw head.