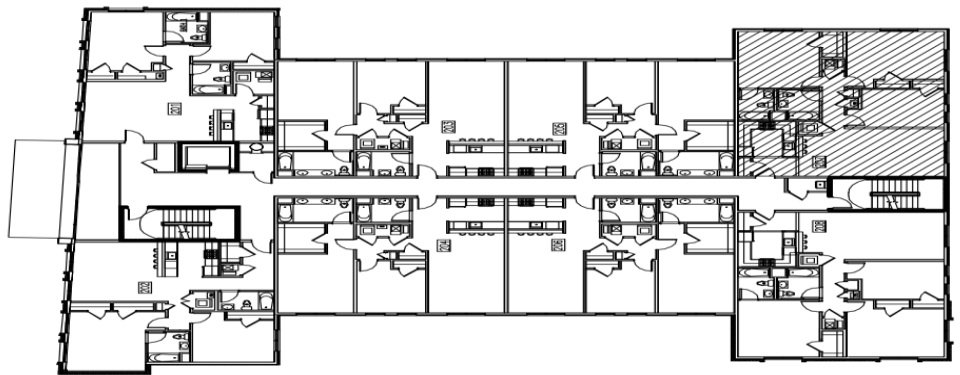


Lofts at Lincoln Park
Units
207, 307, 407
1,296 Sq. Ft.
3 Bedroom / 2 Bath



THIS PLAN CONSTITUTES A CORRECT REPRESENTATION OF THE IMPROVEMENT DESCRIBED IN ACCORDANCE WITH N.J.S.A. 46:8B. ALL DIMENSIONS AND AREA CALCULATIONS ARE APPROXIMATIONS AND THE EXACT CALCULATIONS MAY VARY BETWEEN SIMILAR UNITS DUE TO FIELD VARIATIONS. PURCHASERS SHOULD VERIFY CONFORMITY BETWEEN THE REPRESENTED UNIT AND ACTUAL UNIT.



1000 PLAZA TWO, FLOOR 10
HARBORSIDE FINANCIAL PLAZA
JERSEY CITY, NJ 07311

T. 201.942.6234
F. 201.942.6223
pureproperties.com

TEAM
Moza