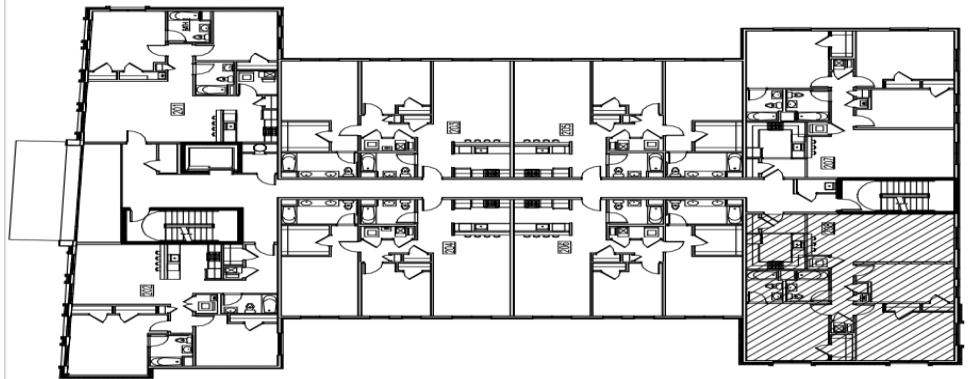


Lofts at Lincoln Park  
 Units  
 208, 308, 408  
 1,294 Sq. Ft.  
 3 Bedroom / 2 Bath



THIS PLAN CONSTITUTES A CORRECT REPRESENTATION OF THE IMPROVEMENT DESCRIBED IN ACCORDANCE WITH N.J.S.A. 46:8B. ALL DIMENSIONS AND AREA CALCULATIONS ARE APPROXIMATIONS AND THE EXACT CALCULATIONS MAY VARY BETWEEN SIMILAR UNITS DUE TO FIELD VARIATIONS. PURCHASERS SHOULD VERIFY CONFORMITY BETWEEN THE REPRESENTED UNIT AND ACTUAL UNIT.



1000 PLAZA TWO, FLOOR 10  
 HARBORSIDE FINANCIAL PLAZA  
 JERSEY CITY, NJ 07311

T. 201.942.6234  
 F. 201.942.6223  
 pureproperties.com

