

CIRCULAR DESIGN - REDUCE - REUSE - RECYCLE - WASTE - RESPONSIBLE RESOURCES - REFORESTATION - CRAFTSMANSHIP - TRANSPARENCY - EFFICIENT ENERGY - ENVIRONMENTAL AWARENESS - SUSTAINABILITY

**mater**  
Circular since 2006

**Mater**



**Mater means *mother* in latin**

**About**

Circular since 2006	4
Our Materials	10
The Sustainable Development Goals	12

**News**

Ocean Collection	16
Nova Sea Chair	26
News from Space Copenhagen	36
The Dining Chair	40
The Lounge Chair	40
High Stool Backrest	40
Accent Dining Table in black	40
Earth Stool & Earth Stool Backrest	48
Mask Stool	58

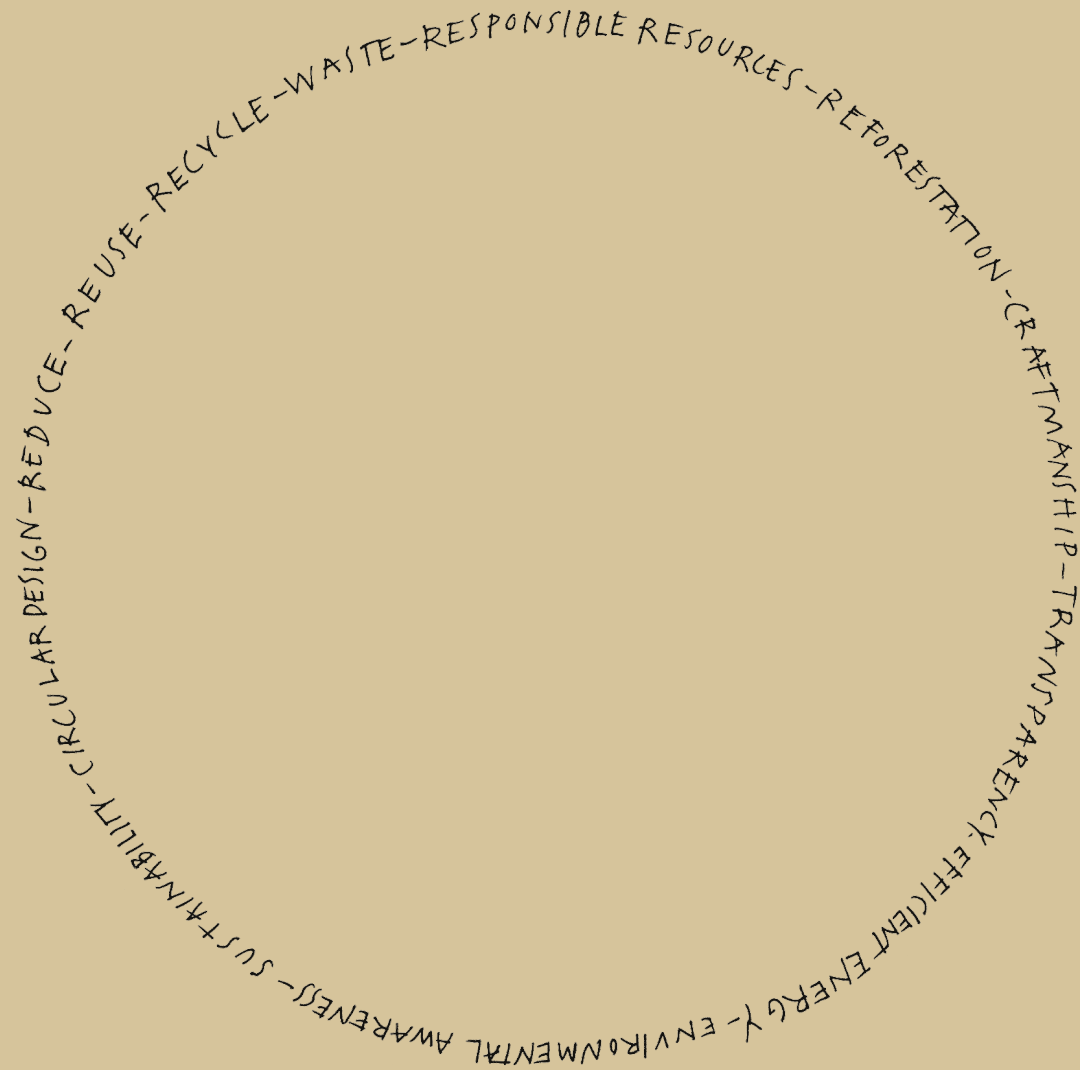
**Mater Collection**

Outdoor Furniture	67
Furniture	71
Lighting	83
Objects	89
Material overview	93
Designers	99
Contact	101

## Circular since 2006

Founded in Copenhagen in 2006, Mater was created to be the pioneering global brand with sustainability embedded in its core.

From the very beginning the ambition was to inspire a global design audience and engage people into sustainable thinking. Mater combines sustainability and circular production using waste, with timeless design, through collaboration with an external base of well-established and new design talents.

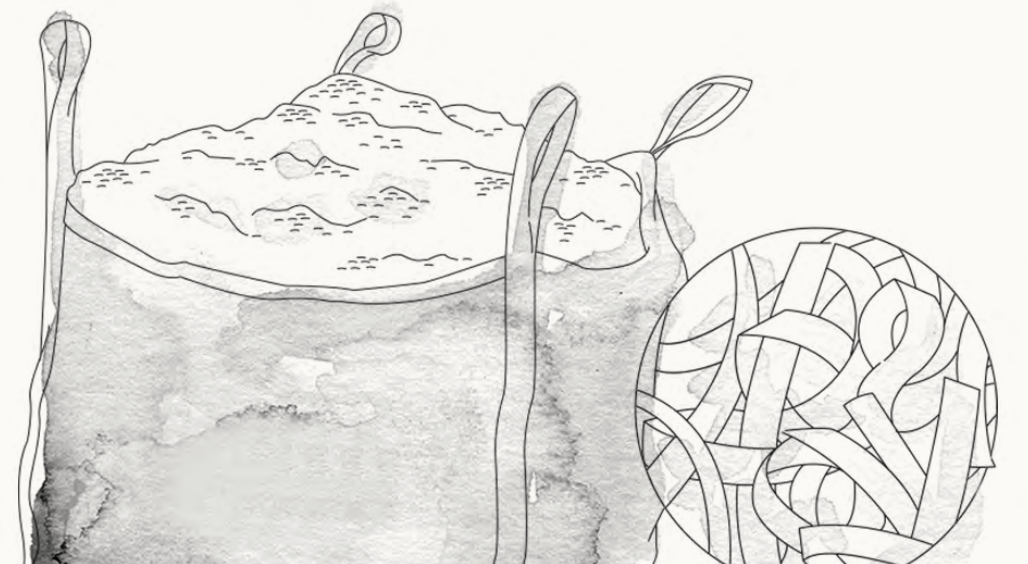




# Together we are committed

After years of research for more sustainable ways to create furniture, lighting and objects we now work with a range of production partners with the same ambition as us, creating partnerships for change and supporting the United Nations Sustainable Development Goals.

Together we are committed to searching for new and better ways of making beautiful design - in a responsible way.







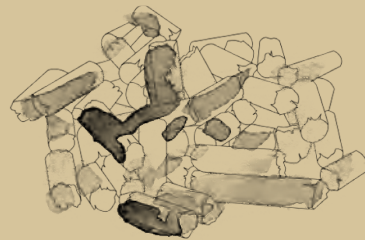
Ocean Collection  
Villa Copenhagen Hotel, Copenhagen, Denmark



# Our Materials

Every material we use is a tribute to sustainable thinking.

Maters foundation and first pioneering steps towards creating timeless sustainable furniture design started in 2006 - and have since then expanded to a wider palette of upcycled and innovative circular materials continually pushing the boundaries of exploring new materials.



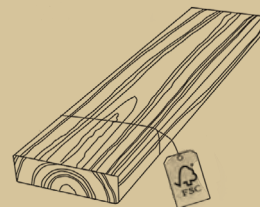
## Industrial plastic waste

Most of our industrial plastic waste comes for large danish corporations, such as plastic waste from production of insulin pens from global diabetes leader - Novo Nordisk.



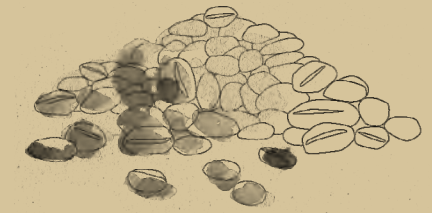
## FSC certified wood

All wooden products in our collection have always been made from FSC certified wood. In an FSC-certified forest no more trees than the forest can reproduce are felled, so the exploitation of nature is avoided. FSC ensures fair wages and a fair trading price and gives full tracability from product to forest.



## Upcycled mango wood

When the tree ends it's productive life as a fruit tree a new one is automatically planted. Instead of low value usage such as burning it, the wood is upcycled, to provide income for the struggling wood-working craft. All our mango wood is FSC certified.



## Coffee shell waste

Coffee shell waste is a bi-product from coffee bean roasting. Together with BK1 Coffee, one the largest coffee roasteries in Denmark, we use this fibre-based waste for several of our shell chairs.



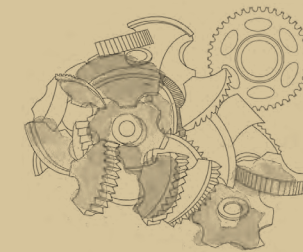
## Discarded fishing nets

Old fishing nets from the ocean is collected, washed, shredded and made into pellets also called 'green plastic'. The ocean waste is used both in our outdoor series and injection moulded chairs.



## Spent grain waste

Spent grain waste is a bi-product from the Danish brewery Carlsberg's beer production that we use in several of our new circular products.



## Upcycled aluminum

Old pipes, tubes and other aluminum waste is melted and used for several of our sand casted products. A way of upcycling low value scrap into beautiful design pieces.

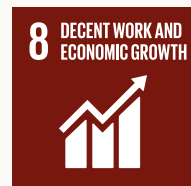
We are comitted to

# The Sustainable Development Goals

At Mater we align our sustainable values with The United Nations Global Goals for sustainable development - a framework agreed by 193 nations, organized into 17 Sustainable Development Goals to improve our planet and living conditions towards 2023. Today we support eight of them with our collection.



All our lighting is made of materials with sustainable elements - from recycled aluminum to certified wood. The newest LED technology is embedded in all our lighting as this is the most sustainable source of lighting to help save energy.



Through our code of conduct we make sure that we work towards better standards - safe working conditions, fair wages, fair price and following local environmental standards.



We bring new innovative production techniques into the furniture business, upcycling industrial waste, and by mid 2021 we have invested in a revolutionary circular production facility for large scale production.



Sustainable consumption is about doing better with less. With our circular waste production we support a consumption driven change, the more we sell the more waste we remove.



Using circular and upcycled materials in our design supports a reduction of carbon emissions. An example is the Ocean Collection where one single Ocean Chair demonstrates up to 82% in carbon emission savings compared to virgin plastic.



Both our Ocean and Nova Sea collection is made of discharged fishing nets from the oceans. We are proud that these products contribute to reducing landfill, marine pollution and loss of valuable resources.



All our wooden products are FSC certified. In an FSC-certified forest no more trees than the forest can reproduce are felled, so the exploitation of nature is avoided. FSC insures fair pricing and fair wages as well as fair working conditions.



We work with a range of production partners with the same ambition as Mater - creating partnerships for change. Together we are committed to searching for new and better ways of making timeless design in a responsible way.

# News





Ocean Bench p. 68 | Ocean Chair p. 68  
Villa Copenhagen, Hotel - Copenhagen, Denmark



Ocean Collection  
Designed by Joergen & Nanna Ditzel

## Made from upcycled fishing nets

The Ocean collection was originally designed in 1955 by some of the 20th century's most renowned designers, Joergen and Nanna Ditzel. The design has now been created in ocean plastic waste. The series is characterized by its light structure with repeated slats and metal frames, made and tested for outdoor use. The Ocean collection is designed for disassembly, meaning that the design allows each component in its purest form to upcycle into new production circles.





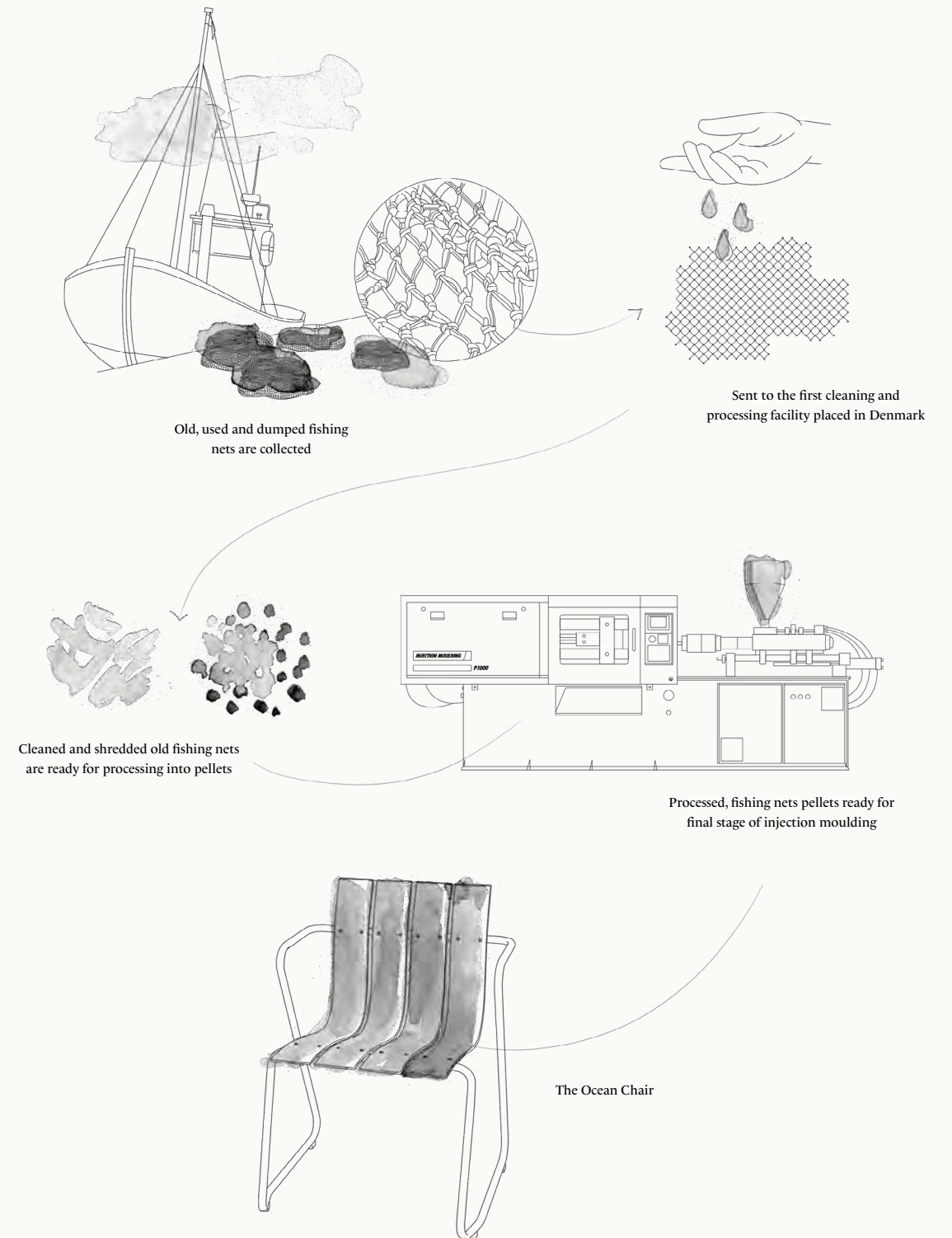


Fishing nets collected from the Ocean, processed in collaboration with Danish partners Plastix and Letbek Plast.

## One chair saves up to 82 % CO2 emissions compared to virgin equivalents

In a nod to its materiality, the Ocean collection is largely made from ocean plastic waste, one of the most important issues facing our planet. A new innovative business model motivates fishermen across the world to dispose of their discarded fishing nets. One single Ocean chair uses 960g of ocean plastic waste.

## From ocean waste to outdoor furniture







Ocean Lounge Table p. 69 | Ocean Lounge Chair p. 68



Ocean Bench p. 68





Ocean Bench p. 68



Ocean Chair p. 68  
Villa Copenhagen, Hotel - Copenhagen, Denmark

## Joergen & Nanna Ditzel



Nanna og Joergen Ditzel were born in respectively 1923 and 1921. They meet each other at the Danish School of Arts and Crafts in Copenhagen, where they both were students.

In 1946 they established their own design studio. The period from 1946 to 1961 was very productive for the young couple. After Joergens death in 1961 Nanna continued their joint project alone. Many new things were designed the following years, until her death in 2005.





Nova Sea Chair p. 72  
Villa Copenhagen, Hotel - Copenhagen, Denmark

## Nova Sea Chair

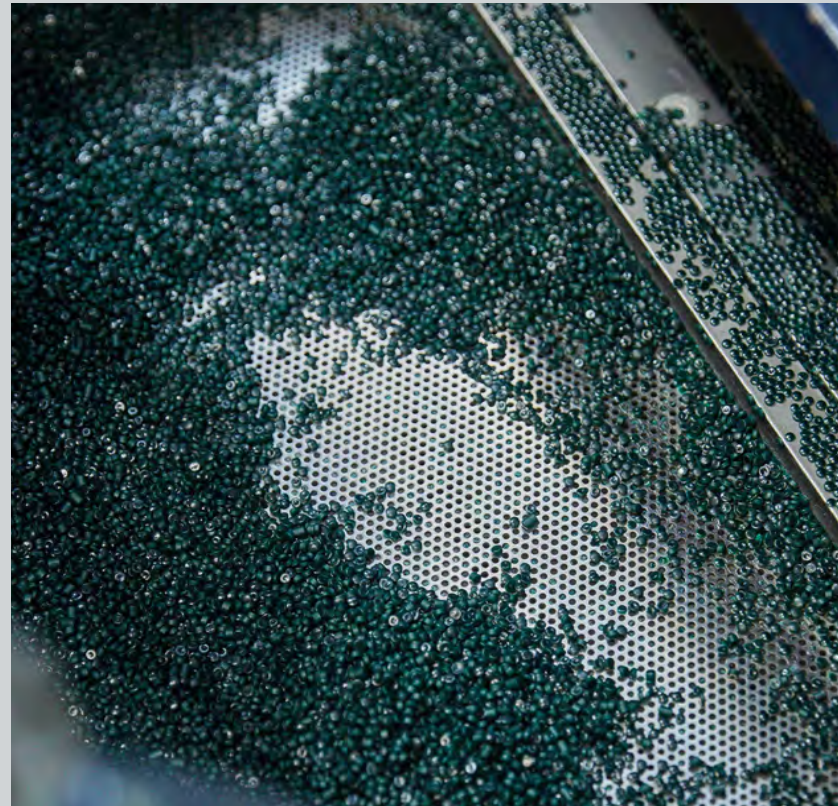
Designed by ARDE



# Made from upcycled fishing nets

Nova Sea Chair designed by ARDE, is characterized by its light silhouette and sleek metal frame, with a seat made from ocean waste plastic, collected from the worlds oceans. The chair is developed through a collaboration between Mater, ARDE and the exclusive five-star hotel Villa Copenhagen.



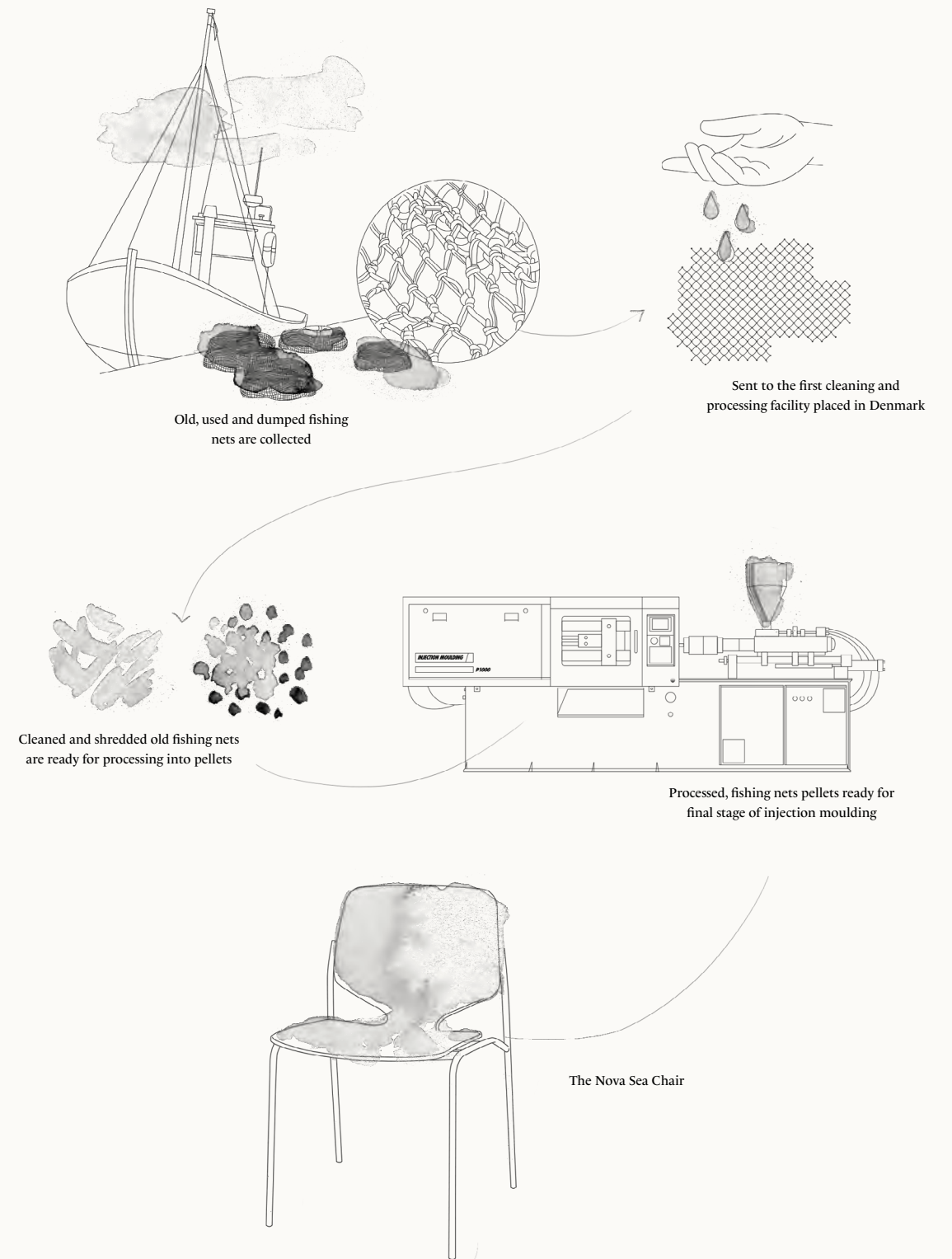


Discarded fishing nets made into green plastic pellets

## Shell made from 96% recycled ocean waste plastic

Nova Sea is largely made from ocean plastic waste, one of the most important issues facing our planet. A new innovative business model motivates fishermen across the world to dispose of their discarded fishing nets.

## From discarded fishing nets to Nova Sea Chair







Nova Sea Chairs  
Conference room at Villa Copenhagen, Hotel - Copenhagen, Denmark



## **Textile made from recycled consumer plastic waste**

Post-consumer recycled polyester is made from post-consumer waste such as PET plastic bottles that would otherwise have been incinerated or ended up in landfills. The recycling process results in lower CO2 emissions than the process of making virgin polyester fibres and eliminates the need for new raw materials.







Nova Sea Chair p. 72 | Trumpet Coat Stand p. 90  
Meeting room at Villa Copenhagen, Hotel - Copenhagen, Denmark

## ARDE



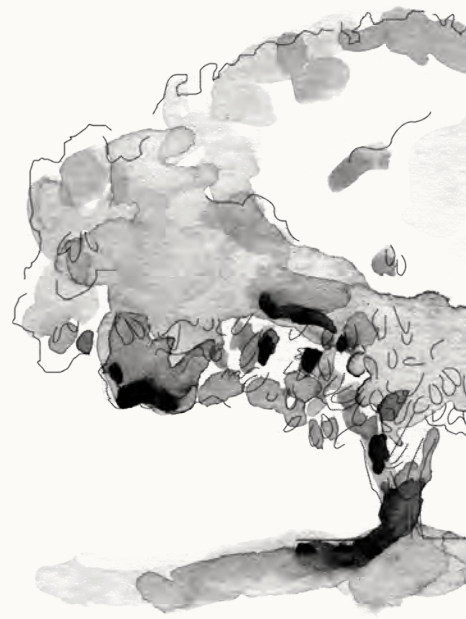
ARDE was founded in 2014 by architect René Hougaard. ARDE make great efforts to create design that drives sustainable change, is functional and has a purpose. By considering the circular lifecycle of design and investigating how new and existing materials can be used and combined, ARDE eliminate what's unnecessary to identify the essential.





The Lounge Chair p. 76 | Accent Table, Large - Black p. 80

**News**  
by Space Copenhagen



# Made from FSC certified wood

The Space Copenhagen Collection for Mater is a versatile collection of contemporary Danish design with classic roots. It expresses a poetic modernism that harmonizes with the main driving force behind the overall design approach of Space Copenhagen.





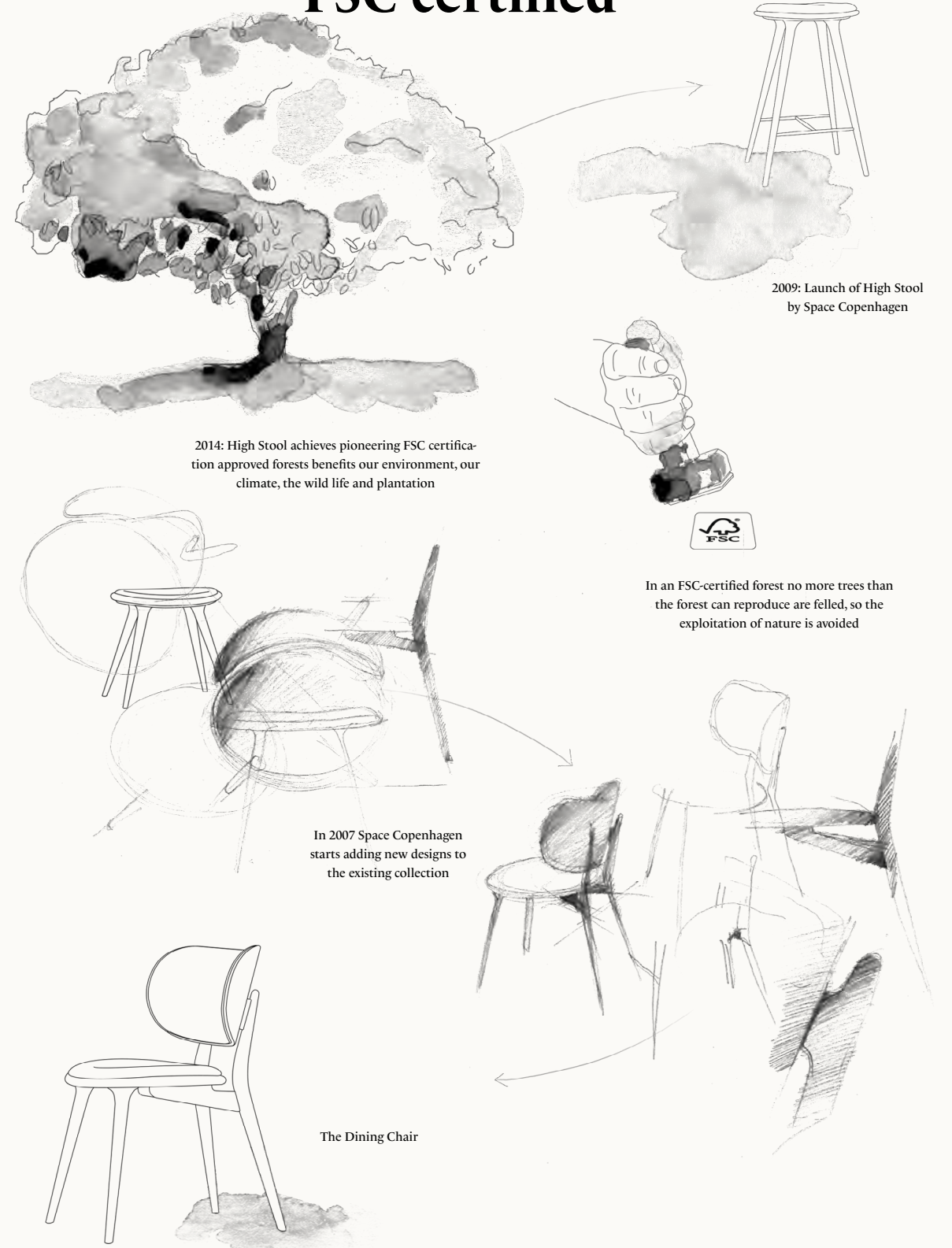


FSC Certified wood

## Every time we harvest a tree, a new one is planted

All wood in our collection is labeled and produced in FSC(TM) certified wood. When producing furniture from FSC certified wood we support well-managed forestry. In an FSC-certified forest no more trees than the forest can reproduce are felled, so the exploitation of nature is avoided. FSC ensures fair wages and a fair trading price and gives full tracability. We can trace a chair back to the forest where the tree was planted.

## All our wooden products are FSC certified





## The Dining Chair

The Dining Chair with a generously rounded backrest, all made from sustainable sourced wood, is a beautifully sculptured chair inspired by High Stool. The dining chair's smooth curved backrest outweighs the need for armrests. The backrest itself is upholstered in soft durable leather and is fully supportive and comfortable which make it perfect for dining occasions.

The Dining Chair p. 76



## The Lounge Chair

The Lounge Chair, designed by Space Copenhagen, is a classic, sculptural and archetypal piece of furniture built on The Dining Chair's and High Stool's character. The backrest and seat are larger and generously rounded with organic smooth curves and slightly sloped for a heightened sense of comfort. The seat and backrest are upholstered in a soft, durable leather and are fully supportive and comfortable.

The Lounge Chair p. 76

## Accent Dining Table in Black

The Accent Dining Table is handcrafted in solid FSC oak wood, with a light silhouette of dedicated craftsmanship. It is available in two sizes, Ø110 and Ø140 cm and comes in three different colours; Natural, Sirka Grey and the new Black edition.

Accent Dining Table p. 81



## High Stool Backrest

High Stool with a new backrest - hence the name High Stool Backrest builds on High Stool's minimalistic aesthetics and organic character, which is regarded as a New Danish Classic. A generously rounded backrest for a heightened sense of comfort is added.

High Stool Backrest p. 76







PART TWO

fast  
tion  
confi  
were l  
women  
I was m  
Solid  
the Olym  
and influe  
newly wealt





The Lounge Chair - Black p. 76 | Accent Table, Small - Black p. 80



The Dining Chair - Natural p. 76 | Accent Café Table - Natural p. 81





## Space Copenhagen



Space Copenhagen, established in 2005 by Signe Bindslev Henriksen and Peter Bundgaard Rützou. Space Copenhagen is a design studio working across multiple disciplines from furniture, lighting and refined objects, to art installations, art direction and interior design for private homes, hotels and restaurants all over the world.

High Stool Backrest - Sirka Grey p. 76 | Liuku Drop Pendant - Black p. 86 | Imago Mirror Object - Brass p. 90  
Studio, Restaurant - Copenhagen, DK

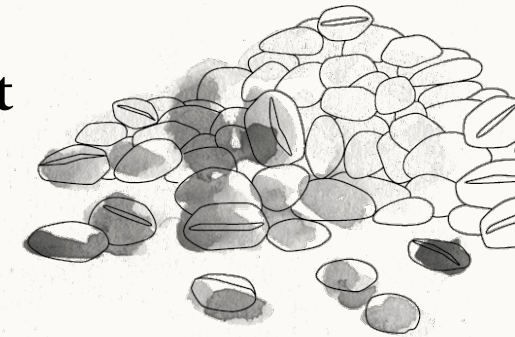




Earth Stool Backrest - Mask Edition p. 73

## Earth Stool & Earth Stool Backrest

Designed by Eva Harlou



## Made from upcycled industrial waste

Earth Stool and Earth Stool Backrest is the result of a new innovative waste-to-value technique developed by Mater, that enables us to upcycle companies' industrial waste. The seats are made of plastic waste from the global leader in diabetes care, Novo Nordisk' production of insulin pens. The plastic waste from Novo Nordisk is mixed with coffeebean shells from BKI coffee - one of Denmark's largest coffee manufacturers or with waste from Carlsberg's beer production – the spent grain.





## In collaboration with Carlsberg, Novo Nordisk & BKI Coffee

The technique is developed by Mater in collaboration with Danish Technological Institute with support from University of Copenhagen. The waste materials are mixed in a unique composite suitable for press moulding – a method designed to upcycle industrial waste from large global companies in a new way. The end result is a new recyclable composite that is completely new in its materiality, durability and strength.



Earth Stool Backrest - Coffee Edition p. 73 | Earth Stool Coffee Edition p. 73



Earth Stool Backrest - Mask Edition p. 73

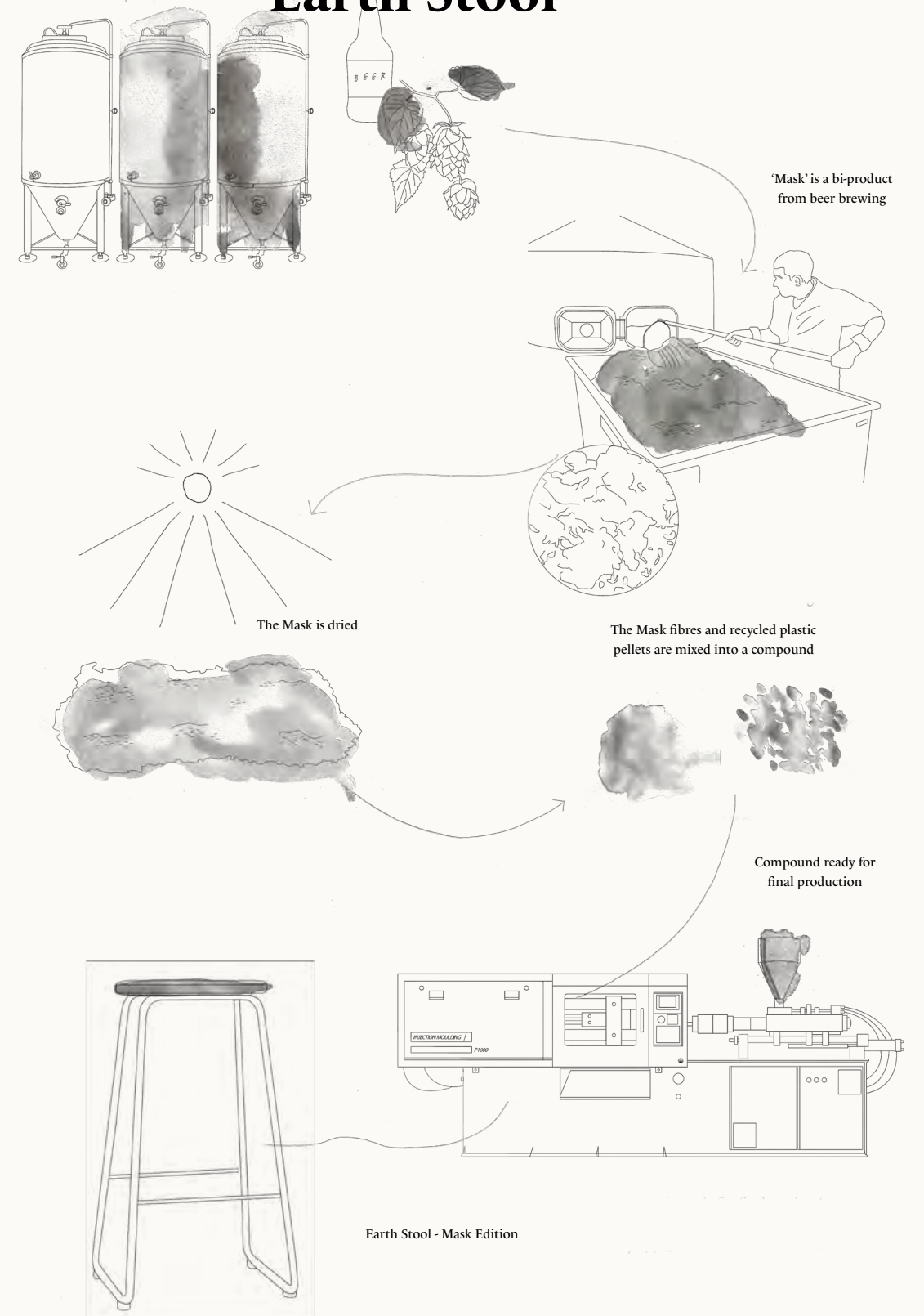


The Earth Stool seat is made from upcycled plastic waste from production of insulin pens mixed with beer fibre waste, thus creating a completely new innovative material finish.

## One seat contains waste from 30 litres of beer production

Mater created the bar stool from a residual product from Carlsberg's beer production, the spent grain (Danish 'mask'), which is a wet fibre-based mass that is dried and mixed with granulate of plastic waste in a unique mixture that enables press molding.

## From beer waste to Earth Stool







Earth Stool Backrest - Coffee Edition p. 73

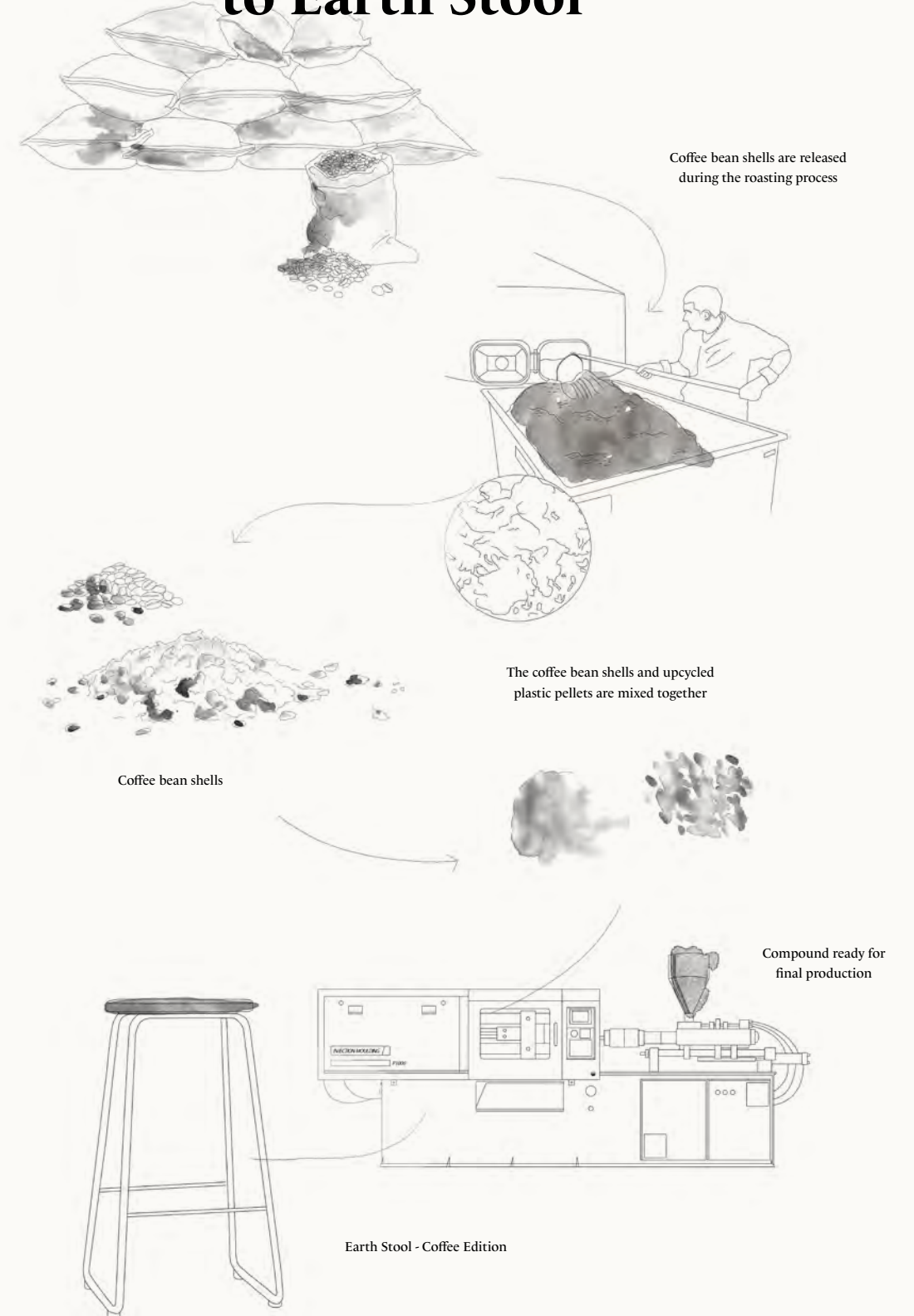


The Earth Stool seat is made from upcycled plastic waste from production of insulin pens mixed with coffee shell fibre waste, thus creating a completely new innovative material finish.

## A mix of coffee shells & plastic waste from Novo Nordisk

Earth Stool represents classic Scandinavian design with steel frames that make the bar stool elegant and timeless. The new ground-breaking production technique allows Mater to upcycle waste materials and turn it into useful and unique design solutions.

## From coffee shells to Earth Stool







Mask Stool - Natural Edition p. 72 | Ray Pendant, Medium - Black p. 87

## Mask Stool

Designed by Eva Harlou



# Made from upcycled industrial waste

Mask Stool is the result of a new innovative waste-to-value technique that enables Mater to upcycle companies' industrial waste. The seat is made of plastic waste from the global leader in diabetes care, Novo Nordisk' production of insulin pens. The plastic waste from Novo Nordisk is mixed with spent grain, a bi-product from Carlsberg's beer production.

'Mask' is the Danish word for the spent grain, hence the name of the stool.





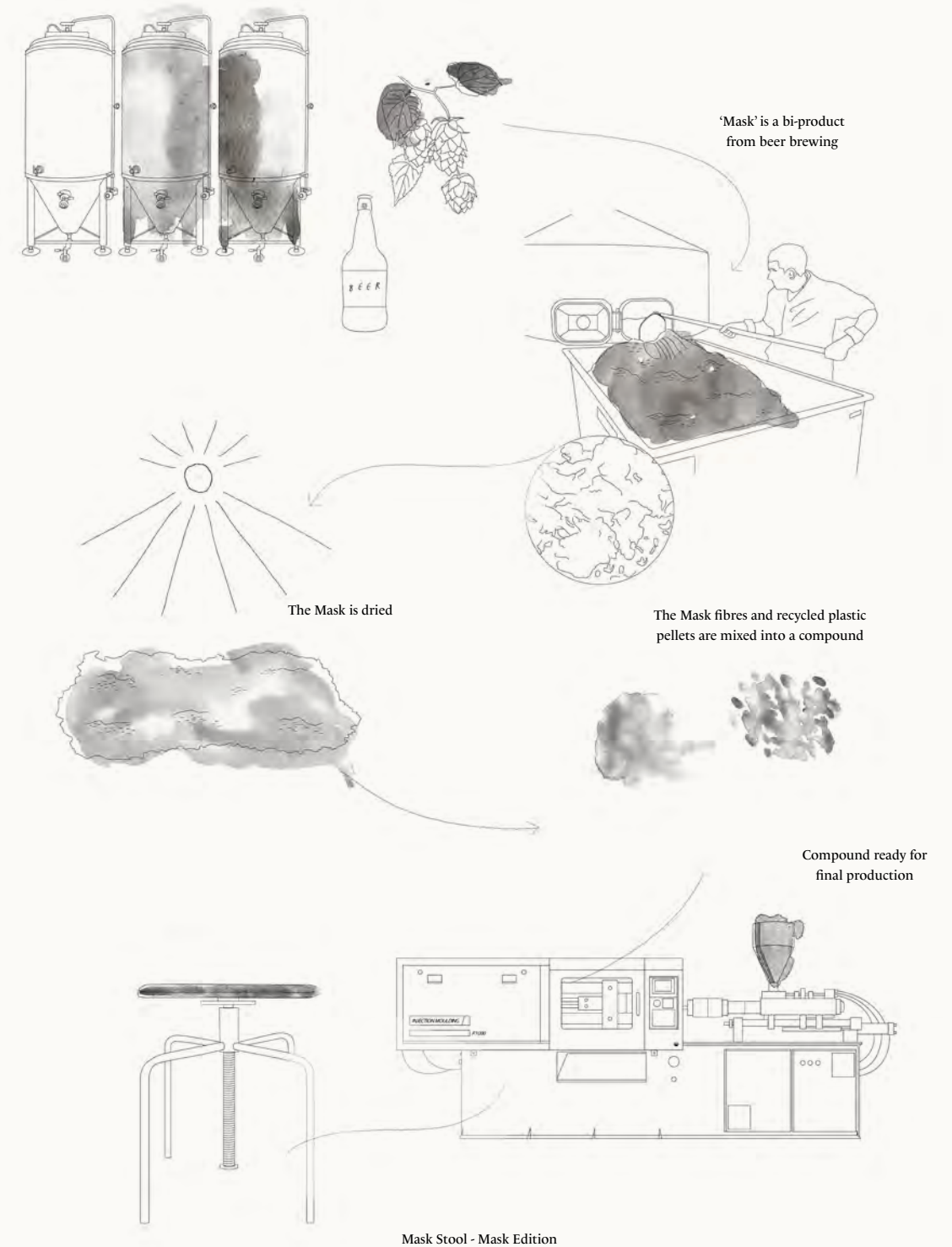
Mask Stool seat is made from upcycled plastic waste from production of insulin pens mixed with beer fibre waste, thus creating a completely new innovative material finish.

## One seat contains waste from 30 litres of beer production

The new ground-breaking production technique allows Mater to upcycle waste materials and turn it into useful and unique design solutions. "Carlsberg is always looking for new solutions that can make our products better and our production more sustainable. Mater has succeeded in using our spent grain from beer production in a new way. Normally the mask is used for animal feed, but Mater has succeeded with a new method where the spent grain is mixed with recycled plastic to create furniture. It is in our spirit to always try to do it better."

- Tenna Skov Thorsted, Sustainability Manager at Carlsberg Denmark

## From beer waste to Mask Stool







**Adjustable in height**  
from low stool to high stool







Mask Stool - Natural Edition p. 72 | Ray Pendant, Medium - Black p. 87

## Eva Harlou



Eva Harlou, a Danish architect graduated from Aarhus School of Architecture in 2003. Harlou's designs illustrate her Scandinavian sense of form, function and beauty while at the same time working internationally ambitiously and always creating something unique, both buildings and furniture.

She has her own architectural firm in Copenhagen, been awarded with "Best Breakthrough Designer" by Wallpaper \* Magazine and hosted a wide range of residential and architecture programs on television.

# Outdoor Furniture

**OCEAN CHAIR**  
by Nanna Ditzel



Recycled fishnets and recycled hard plastic  
Black / Sand  
Steel frame, gun metal finish  
W 60 cm D 56 cm H 81 cm SH 46 cm AR 67 cm  
W 23.6" D 22" H 31.9" SH 18.1" AR 26.3"

Item no. 09301

NEW



Item no. 09303

NEW



**OCEAN TABLE**  
by Nanna Ditzel



Recycled fishnets and recycled hard plastic  
Black / Sand  
Steel frame, gun metal finish  
W 70 cm D 70 cm H 74 cm  
W 27.5" D 27.5" H 29.1"

Item no. 09311

NEW



Item no. 09313

NEW



**OCEAN TABLE**  
by Nanna Ditzel



Recycled fishnets and recycled hard plastic  
Black / Sand  
Steel frame, gun metal finish  
W 72 cm D 63 cm H 67 cm SH 39 cm AR 55 cm  
W 28.3" D 24.8" H 26.3" SH 15.3" AR 21.6"

Item no. 09331

NEW



Item no. 09333

NEW



**OCEAN TABLE**  
by Nanna Ditzel



Recycled fishnets and recycled hard plastic  
Black / Sand  
Steel frame, gun metal finish  
L 140 cm D 70 cm H 74 cm  
W 55.1" D 27.5" H 29.1"

Item no. 09321

NEW



Item no. 09323

NEW



**OCEAN BENCH**  
by Nanna Ditzel



Recycled fishnets and recycled hard plastic  
Black / Sand  
Steel frame, gun metal finish  
W 79 cm D 70 cm H 30  
W 31.1" D 27.5" H 11.8"

Item no. 09351

NEW



Item no. 09353

NEW



**OCEAN LOUNGE TABLE**  
by Nanna Ditzel



Recycled fishnets and recycled hard plastic  
Black / Sand  
Steel frame, gun metal finish  
W 79 cm D 70 cm H 30  
W 31.1" D 27.5" H 11.8"

Item no. 09341

NEW



Item no. 09343

NEW





# Furniture

**NOVA SEA**  
by Arde



Steel frame, gun metal finish  
96% Recycled fishnets and recycled hard plastic  
Black, W or W/O upholstered seat and armrests  
W 55 cm D 55 cm H 80 cm ArH 67 cm  
W 21" D 19.3" H 17.7"

Item no. 09011

NEW



Item no. 09012

NEW



Item no. 09013

NEW



Item no. 09014

NEW



**MASK STOOL**  
by Eva Harlou



Steel frame, Black  
Mask - Natural edition  
W 40 cm D 40 cm SH 45 cm to 72 cm  
W 15.7" D 15.7" SH 17.7" to 28.3"  
(adjustable seat height)

Item no. 06050

NEW



**EARTH STOOL**  
by Eva Harlou



Steel frame, Gun metal  
FSC certified oak wood / Plastic waste edition /  
Mask edition  
W 37 cm D 27 cm H 69 cm  
W 14.5" D 10.6" H 27.1"

Item no. 06044



Item no. 06046

NEW



Item no. 06045

NEW



**EARTH STOOL**  
by Eva Harlou



Steel frame, Gun metal  
FSC certified oak wood / Plastic waste edition /  
Mask edition  
W 37 cm D 27 cm H 74 cm  
W 14.5" D 10.6" H 29.1"

Item no. 06040



Item no. 06042

NEW



Item no. 06043

NEW



**EARTH STOOL BACKREST**  
by Eva Harlou



Steel frame, Gun metal  
Plastic waste edition / Mask edition  
W 37 cm D 27 cm H 99cm SH 69 cm /  
W 14.5" D 10.6" H 38.9" SH 27.1"

Item no. 06062

NEW



Item no. 06063

NEW



**EARTH STOOL BACKREST**  
by Eva Harlou



Steel frame, Gun metal  
Plastic waste edition / Mask edition  
W 37 cm D 27 cm H 104 cm SH 74 /  
W 14.5" D 10.6" H 40.9" SH 29.1"

Item no. 06065

NEW



Item no. 06066

NEW



**LOW STOOL / HIGH STOOL**  
by Space Copenhagen



Solid Beech, FSC certified  
Dark Stain Lacquered  
Black leather seat  
W 45 cm D 36 cm /  
W 17.7" D 14.1"

**Item no. 01003**  
H 47 cm



**Item no. 01002**  
H 74 cm



**Item no. 01004**  
H 69 cm



**LOW STOOL / HIGH STOOL**  
by Space Copenhagen



Solid Beech, FSC certified, Black Stain Lacquered  
Black leather seat  
W 45 cm D 36 cm /  
W 17.7" D 14.1"

**Item no. 01013**  
H 47 cm



**Item no. 01012**  
H 74 cm



**Item no. 01014**  
H 69 cm



**LOW STOOL / HIGH STOOL**  
by Space Copenhagen



Beech, FSC certified. Sirka Grey Stain Lacquered  
Black leather seat  
W 45 cm D 36 cm /  
W 17.7" D 14.1"

**Item no. 01007**  
H 47 cm



**Item no. 01006**  
H 74 cm



**Item no. 01008**  
H 69 cm



**LOW STOOL / HIGH STOOL**  
by Space Copenhagen



70 % recycled aluminium, polished  
Black leather seat  
W 45 cm D 36 cm /  
W 17.7" D 14.1"

**Item no. 01023**  
H 47 cm



**Item no. 01022**  
H 74 cm



**Item no. 01024**  
H 69 cm



**LOW STOOL / HIGH STOOL**  
by Space Copenhagen



Soaped Oak, FSC certified  
Pigmentet upholstery, Natural  
W 45 cm D 36 cm /  
W 17.7" D 14.1"

**Item no. 01033**  
H 47 cm



**Item no. 01032**  
H 74 cm



**Item no. 01034**  
H 69 cm



**LOW STOOL / HIGH STOOL**  
by Space Copenhagen



Sirka Grey Stain Lacquered Oak, FSC certified  
Pigmentet upholstery, Black  
W 45 cm D 36 cm /  
W 17.7" D 14.1"

**Item no. 01043**  
H 47 cm



**Item no. 01042**  
H 74 cm



**Item no. 01044**  
H 69 cm



**LOW STOOL / HIGH STOOL**  
by Space Copenhagen



Dark Stain Lacquered Oak, FSC certified.  
Pigmentet upholstery, Black  
W 45 cm D 36 cm /  
W 17.7" D 14.1"

**Item no. 01053**  
H 47 cm



**Item no. 01052**  
H 74 cm



**Item no. 01054**  
H 69 cm



**HIGH STOOL**  
by Space Copenhagen



Black Stain Lacquered Oak, FSC certified.  
Pigmentet upholstery, Black  
W 45 cm D 36 cm /  
W 17.7" D 14.1"

**Item no. 01082**  
H 74 cm



**Item no. 01084**  
H 69 cm





**THE DINING CHAIR**  
by Space Copenhagen



Oak, FSC Certified / Beech, FSC Certified  
Natural Matt Lacquered Oak / Sirka Grey Stain  
Oak / Black Lacquered Beech  
Pigmentet upholstery, Natural / Black  
W 52 cm D 44 cm H 80 cm Sh 47 cm  
W 20.4" D 17.3" H 31.4" Sh 18.5"

Item no. 01201

NEW



Item no. 01202

NEW



Item no. 01204

NEW



**HIGH STOOL BACKREST**  
by Space Copenhagen



Oak, FSC Certified / Beech, FSC Certified  
Natural Matt Lacquered Oak / Sirka Grey Stain  
Oak / Black Lacquered Beech  
Pigmentet upholstery, Natural / Black  
W 46 cm D 38 cm H 102 cm SH 74 cm  
W 18.1" D 14.9" H 40.1" SH 29.1"

Item no. 01211

NEW



Item no. 01212

NEW



Item no. 01214

NEW



**HIGH STOOL BACKREST**  
by Space Copenhagen



Oak, FSC Certified / Beech, FSC Certified  
Natural Matt Lacquered Oak / Sirka Grey Stain  
Oak / Black Lacquered Beech  
Pigmentet upholstery, Natural / Black  
W 46 cm D 38 cm H 97 cm SH 69 cm  
W 18.1" D 14.9" H 38.1" SH 27.1"

Item no. 01221

NEW



Item no. 01222

NEW



Item no. 01224

NEW



**THE LOUNGE CHAIR**  
by Space Copenhagen



Oak, FSC Certified / Beech, FSC Certified  
Natural Matt Lacquered Oak / Sirka Grey Stain  
Oak / Black Lacquered Beech  
Pigmentet upholstery, Natural / Black  
W 65 cm D 69 cm H 72 cm SH 40 cm  
W 25.5" D 27.1" H 28.3" SH 15.7"

Item no. 01231

NEW



Item no. 01232

NEW



Item no. 01234

NEW



**SHELL BAR STOOL**  
by Michael Dreeben



Oak, FSC certified  
Sirka Grey lacquer stain  
Pigmentet upholstery, ULTRA  
Brandy / Cognac / Black  
W 37 cm D 45 cm H 105 cm SH 77 cm  
W 14.5" D 17.7" H 41.3" SH 30.3"

Item no. 02190  
Seat no. 02195



Item no. 02190  
Seat no. 02193



Item no. 02190  
Seat no. 02194



**SHELL BAR STOOL**  
by Michael Dreeben



Oak, FSC certified  
Sirka Grey lacquer stain  
Pigmentet upholstery, ULTRA  
Brandy / Cognac / Black  
W 37 cm D 45 cm H 100 cm SH 72 cm  
W 14.5" D 17.7" H 39.3" SH 28.3"

Item no. 02191  
Seat no. 02195



Item no. 02191  
Seat no. 02193



Item no. 02191  
Seat no. 02194



**SHELL DINING CHAIR**  
by Michael Dreeben



Oak, FSC certified  
Natural Matt Lacquered Oak / Sirka Grey Stain  
Oak / Black Lacquered Oak  
Pigmentet upholstery, ULTRA  
Brandy / Cognac / Black  
W 49 cm D 57 cm H 87 cm SH 45 cm  
W 19.2" D 22.4" H 34.2" SH 17.7"

Item no. 02290  
Seat no. 02223



Item no. 02291  
Seat no. 02221



Item no. 02292  
Seat no. 02222



**NESTOR**  
by Tom Stepp



Oak / Beech FSC certified  
Natural Matt Lacquered / Natural Paper cord seat  
Sirka Grey stain / Natural Paper cord seat  
Black Lacquered / Black Paper cord seat  
W 57 cm D 53 cm H 76 cm SH 44 cm  
W 22.4" D 20.8" H 30" SH 17.3" AR 26.7"

Item no. 08206



Item no. 08106



Item no. 08005



**NESTOR**  
by Tom Stepp



Oak / Beech FSC certified  
Natural Matt Lacquered / Natural Paper cord seat  
Sirka Grey stain / Natural Paper cord seat  
Black Lacquered / Black Paper cord seat  
W 57 cm D 53 cm H 76 cm SH 44 cm AR 68 mm  
W 22.4" D 20.8" H 30" SH 17.3" AR 26.7"

Item no. 08203



Item no. 08103



Item no. 08004



**ROCKER**  
by Shawn Place



Oak, FSC certified  
Natural Matt Lacquered / Harness Whiskey  
(Vegetable tanned leather)  
Sirka Grey Stain / Harness Mustang  
(Vegetable tanned leather)  
W 59.5 cm D 86.5 cm H 78 cm SH 33 cm  
W 23.4" D 34" H 30.7" SH 13"

Item no. 07010



Item no. 07011



**MOLLIS SOFA**  
by ByKato



Oak, FSC certified. Black Lacquered  
Kvadrat Re-wool 0218 upholstery  
L 203 cm D 85 cm H 81 cm SH 37 cm SD 73 cm  
L 80" D 33.4" H 31.9" SH 14.5" SD 28.7"

Item no. 05030



**BOWL TABLE**  
by Ayush Kasliwal



Mango Wood, Sustainably harvested  
Natural Matt Lacquered / Sirka Grey Stain  
/ Black Lacquered  
Black steel legs  
Small: Ø 40 cm H 38 cm / Ø 15.7" H 14.9"

Item no. 01604



Item no. 01605



Item no. 01606



**BOWL TABLE**  
by Ayush Kasliwal



Mango Wood, Sustainably harvested  
Natural Matt Lacquered / Sirka Grey Stain  
/ Black Lacquered  
Black steel legs  
Medium: Ø 46 cm H 52 cm / Ø 18.1" H 20.4"

Item no. 01601



Item no. 01602



Item no. 01603



**BOWL TABLE**  
by Ayush Kasliwal



Mango Wood, Sustainably harvested  
Natural Matt Lacquered / Sirka Grey Stain  
/ Black Lacquered  
Black steel legs  
Large: Ø 52 cm H 46 cm / Ø 20.4" H 18.1"

Item no. 01607



Item no. 01608



Item no. 01609



**BOWL TABLE**  
by Ayush Kasliwal



Mango Wood, Sustainably harvested  
Natural Matt Lacquered / Sirka Grey Stain  
/ Black Lacquered  
Black steel legs  
X-Large: Ø 75 cm H 38 cm / Ø 29.5" H 14.9"

Item no. 01611



Item no. 01612



Item no. 01613





**ACCENT TABLE**  
by Space Copenhagen



Oak, FSC certified  
Natural Matt Lacquered / Sirka Grey Stain  
/ Black Lacquered  
Small: Ø 45 cm H 42 cm / Ø 17.7" H 16.5"

Item no. 01411



Item no. 01401



Item no. 01421

NEW



**ACCENT OVAL LOUNGE TABLE**  
by Space Copenhagen



Oak, FSC certified  
Natural Matt Lacquered / Sirka Grey Stain  
W 80 cm L 120 cm H 42 cm  
W 31.5" L 47.2 H 16.5

Item no. 01414



Item no. 01404



**ACCENT TABLE**  
by Space Copenhagen



Oak, FSC certified  
Natural Matt Lacquered / Sirka Grey Stain  
/ Black Lacquered  
Medium: Ø 45 cm H 55 cm / Ø 17.7" H 21.6"

Item no. 01412



Item no. 01402



Item no. 01422

NEW



**ACCENT CAFÉ TABLE**  
by Space Copenhagen



Oak, FSC certified  
Natural Matt Lacquered / Sirka Grey Stain  
Ø 70 cm H 73 cm / Ø 27.5" H 28.7"

Item no. 01416



Item no. 01406



**ACCENT TABLE**  
by Space Copenhagen



Oak, FSC certified  
Natural Matt Lacquered / Sirka Grey Stain  
/ Black Lacquered  
Large: Ø 60 cm H 55 cm / Ø 23.6" H 21.6"

Item no. 01413



Item no. 01403



Item no. 01423

NEW



**ACCENT DINING TABLE**  
by Space Copenhagen



Oak, FSC certified  
Natural Matt Lacquered / Sirka Grey Stain  
Ø 110 cm H 73 cm / Ø 43.3" H 28.7"

Item no. 01415



Item no. 01405



Item no. 01425

NEW



**ACCENT TABLE**  
by Space Copenhagen



Oak, FSC certified  
Natural Matt Lacquered / Sirka Grey Stain  
/ Black Lacquered  
X Large Ø 70 cm H 42 cm / Ø 27.5" H 16.5"

Item no. 01418

NEW



Item no. 01408

NEW



Item no. 01428

NEW



**ACCENT DINING TABLE**  
by Space Copenhagen



Oak, FSC certified  
Natural Matt Lacquered / Sirka Grey Stain  
Ø 140 cm H 73 cm / Ø 55.1" H 28.7"

Item no. 01417



Item no. 01407



Item no. 01427

NEW



# Lighting



**TERHO PENDANT, SMALL**  
by Maija Puoskari

Item no. 02301

Item no. 02311



**UL Certified**  
Linden Wood, FSC certified  
Natural / Opal white - Black lacquered / Smoked  
Solid wood, Opal glass shade, Textile cord  
Socket: E27 — Max 9W LED / E12 — Max 9W  
LED (Bulb not included) Ø 135 mm H 215 mm /  
Ø 5.3" H 8.4" Wire length: 2 m / 78"



**TERHO PENDANT, MEDIUM**  
by Maija Puoskari

Item no. 02302

Item no. 02312



**UL Certified**  
Linden Wood, FSC certified  
Natural / Opal white - Black lacquered / Smoked  
Solid wood, Opal glass shade, Textile cord  
Socket: E27 — Max 9W LED / E26 — Max 9W  
LED (Bulb not included)  
Ø 240 mm H 215 mm / Ø 9.4" H 8.4"  
Wire length: 2 m / 78"



**TERHO PENDANT, LARGE**  
by Maija Puoskari

Item no. 02303

Item no. 02313



**UL Certified**  
Linden Wood, FSC certified  
Natural / Opal white - Black lacquered / Smoked  
Solid wood, Opal glass shade, Textile cord  
Socket: E27 — Max 9W LED / E26 — Max 9W  
LED (Bulb not included)  
Ø 330 mm H 300 mm / Ø 12.9" H 11.8"  
Wire length: 2 m / 78"



**LIUKU BASE**  
by Maija Puoskari

Item no. 02901

Item no. 02902



**UL Certified**  
Linden Wood, FSC certified  
Natural Matt Lacquered  
Solid wood, Textile cord  
Socket: GU10 — LED Max 9W (Bulb not included)  
Ball: Ø 140 mm / Ø 5.5" Drop: Ø 140 mm H  
195 mm / Ø 5.5" H 7.6"  
Wire length: 2 m / 78"



**LIUKU PENDANT BALL**  
by Maija Puoskari

Item no. 02901  
Shade no. 02911

Item no. 02901  
Shade no. 02912

Item no. 02901  
Shade no. 02913



**UL Certified**  
Linden Wood, FSC certified  
Natural Matt Lacquered  
Solid wood, Glass shade, Textile cord  
Transparent / Smoked / Violet gradient  
Socket: GU10 — LED Max 9W (Bulb not included)  
Ø 195 mm H 345 mm / Ø 7.6" H 13.5" Wire  
length: 2 m / 78"



**LIUKU PENDANT DROP**  
by Maija Puoskari

Item no. 02902  
Shade no. 02911

Item no. 02902  
Shade no. 02912

Item no. 02902  
Shade no. 02913



**UL Certified**  
Linden Wood, FSC certified  
Natural Matt Lacquered  
Solid wood, Glass shade, Textile cord  
Transparent / Smoked / Violet gradient  
Socket: GU10 — LED Max 9W (Bulb not included)  
Ø 195 mm H 405 mm / Ø 7.6" H 15.9" Wire  
length: 2 m / 78"



**LIUKU BASE**  
by Maija Puoskari

Item no. 02903

Item no. 02904



**UL Certified**  
Linden Wood, FSC certified  
Black Lacquered  
Solid wood, Textile cord  
Socket: GU10 — LED Max 9W  
(Bulb not included) Ball: Ø 140 mm / Ø 5.5”  
Drop: Ø 140 mm H 195 mm / Ø 5.5” H 7.6”  
Wire length: 2 m / 78”



**RAY PENDANT, SMALL**  
by PEDERJESSEN

Item no. 02501

Item no. 02502



**UL Certified**  
Oak wood, FSC certified  
Steel, White / Black painted, Textile cord  
GU9 — LED Max 10W (Bulb not included)  
Ø 119 mm / Ø 4.6”  
Wire length: 2 m / 78”



**LIUKU PENDANT BALL**  
by Maija Puoskari

Item no. 02903  
Shade no. 02911

Item no. 02903  
Shade no. 02912

Item no. 02903  
Shade no. 02913



**UL Certified**  
Linden Wood, FSC certified  
Black Lacquered  
Solid wood, Glass shade, Textile cord  
Transparent / Smoked / Violet gradient  
Socket: GU10 — LED Max 9W  
(Bulb not included) Ø 195 mm H 345 mm / Ø  
7.6” H 13.5” Wire length: 2 m / 78”



**RAY PENDANT, MEDIUM**  
by PEDERJESSEN

Item no. 02503

Item no. 02504



**UL Certified**  
Oak wood, FSC certified  
Steel, White / Black painted, Textile cord  
GU9 — LED Max 10W (Bulb not included)  
Ø 150 mm H 125 mm / Ø 5.9” H 4.9”  
Wire length: 2 m / 78”



**LIUKU PENDANT DROP**  
by Maija Puoskari

Item no. 02904  
Shade no. 02911

Item no. 02904  
Shade no. 02912

Item no. 02904  
Shade no. 02913



**UL Certified**  
Linden Wood, FSC certified  
Black Lacquered  
Solid wood, Glass shade, Textile cord  
Transparent / Smoked / Violet gradient  
Socket: GU10 — LED Max 9W  
(Bulb not included) Ø 195 mm H 405 mm / Ø  
7.6” H 15.9” Wire length: 2 m / 78”



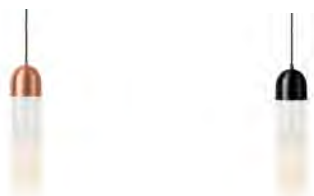
**FIREFLY**  
by José de la O

Item no. 02401

Item no. 02411



**UL Certified**  
Steel, Copper / Black plated top  
Glass partly sandblasted  
Black textile cord  
Socket: GU10 — LED Max 9W  
(Bulb not included)  
Ø 108 mm H 475 mm / Ø 4.2” H 18.7”  
Wire length: 2 m / 78”





# Objects

Mater Collection | Objects

**TRUMPET COAT STAND**  
by Space Copenhagen

Item no. 00225

Item no. 00226



70 % recycled casted aluminium  
Polished / Black powder coated  
Ø 64 cm H 200 cm  
Ø 25.1" H 87.7"



**HANDLE VASE**  
by Eva Harlou

Item no. 90101



Oak, FSC certified  
Borosilicate glass  
H 180 mm W 200 mm D 75 mm  
H 7" W 7.8" D 3.1"



**SPIKE CANDLE HOLDER**  
by Amanda Walther

Item no. 90200

Item no. 90201

Item no. 90202



Partly recycled cast Iron (#90200 & #90201)  
/ Partly recycled cast Aluminium (#90202)  
H 240 mm W 150 mm  
H 9.4" W 5.9"



**IMAGO MIRROR OBJECT**  
by PEDERJESSEN

Item no. 04090

Item no. 04091



Stainless Steel / Brass, polished  
Ø 580 mm D 70 mm  
Ø 22.8" D 2.7"





# Material overview

Mater Collection | Material overview

**BEECH WOOD**  
FSC CERTIFIED



Dark Stained



Black Stained



Sirka Grey Stained

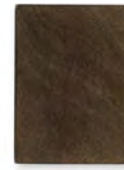
**MANGO WOOD**  
FSC CERTIFIED



Natural Matt Lacquered



Black Stained



Sirka Grey Stained

**LINDEN WOOD**  
FSC CERTIFIED



Natural Matt Lacquered



Black Stained

**OAK WOOD**  
FSC CERTIFIED



Natural Matt Lacquered



Black Stained



Sirka Grey Stained



Soaped



Dark Stained

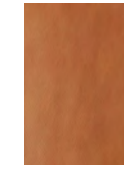
**PINE WOOD**  
FSC CERTIFIED



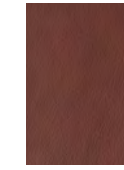
Natural Matt Lacquered

Mater Collection | Material overview

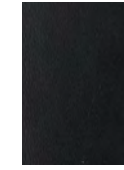
**LEATHER**



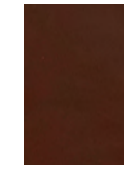
Ultra Brandy



Ultra Cognac



Ultra Black



Mustang



Whiskey



Natural



Black

**ALUMINIUM**



Polished

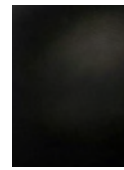


Black Coated

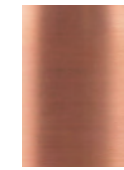
**STEEL**



Brass



Black coated



Copper plated

**STAINLESS STEEL**



Brass

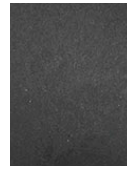


Polished

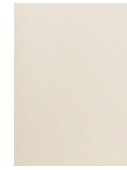


**RECYCLED FISHNETS**

Variation will occur due to recycled materials



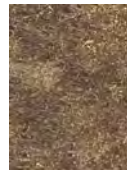
Black



Sand

**COFFEE WASTE**

Variation will occur due to recycled materials



Coffe waste

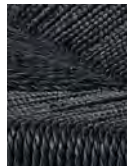
**MASK**

Variation will occur due to recycled materials



Mask

**SUSTAINABLE HARVESTE  
PAPER CORD**



Black



Natural

**RE-WOOL**



Re-wool

**CANE WORK**



Cane

**GLASS, BOROSILCATE**



Transparent



Smoked



Violet



Opal white

# Designers

Our external base of commissioned designers includes both established and young design talents. In close collaboration with Mater they interpret the Scandinavian design philosophy to their own unique creations of high quality furniture lighting & accessories, while supporting the UN Sustainable Development Goals.



Jørgen & Nanna Ditzel



ARDE



Space Copenhagen



Eva Harlou



Ayush Kasliwal



Tom Stepp



Shawn Place



ByKato



PEDERJESSEN



Simon Astridge



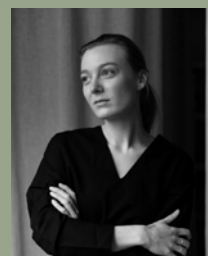
Todd Bracher



Maija Puoskari



Jose de la O



Amanda Walther



Michael Dreeben





Carlsberg/Re-plast  
Novo Nordisk  
BKI Coffee  
Choice Hotels, Villa Copenhagen  
Danish Technological Institute  
Copenhagen University  
Plastix, Ocean fishing nets upcycling  
Letbek, plastic injection moulding  
Martin Munkebo, plastic injection moulding  
Aage Vestergaard Larsen, waste upcycling  
Målbar, carbon footprint tracker  
Trebo, upcycling  
Kvist Industries  
Kvadrat textiles  
Gabriel textiles  
FSC Denmark  
BS Steel

**Considering the planet,  
its resources and its people.**

@materusa

[www.materusa.com](http://www.materusa.com)