

SOYBEANS

GH3546X_{BRAND}

NEW

RM:
3.5



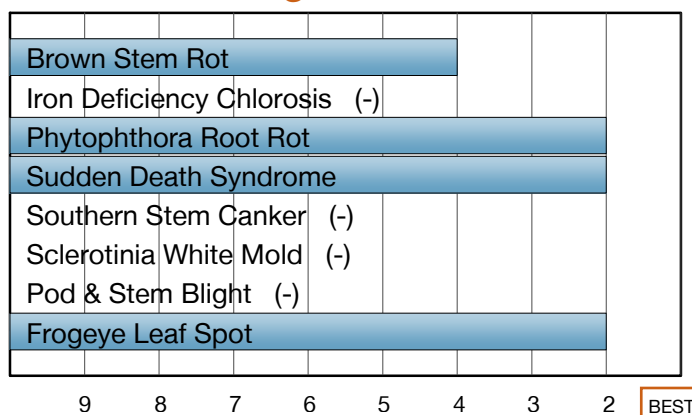
OFFENSIVE AND DEFENSIVE LEADER

- Great performance across yield levels
- Target fields with a history of Frogeye Leaf Spot or Sudden Death Syndrome
- Proven performance across varying soil types

Plant Characteristics

Plant Height	Medium-Tall
Canopy/Plant Type	Medium
Branching	Moderate
Growth Habit	Indeterminate
Flower Color	Purple
Pubescence Color	Light Tawny
Pod Color	Brown
Hilum Color	Black
Chloride Sensitivity	Includer

Disease Ratings



Agronomic Traits

Emergence	2
Standability	3
Shatter Tolerance	2
Stress Tolerance	-
Green Stem	3
Estimated Seed Size	Medium
% Protein at 13% mst.	35.6
% Oil at 13% mst.	20.4
Narrow Rows	1
Wide Rows	1

Adaptation to Soil Types

Drought Prone	●
High pH*	-
Highly Productive	★
Moderate/Variable Environments	★
Poorly Drained	★

Diseases and Pests

Phytophthora Root Rot (PRR) Source	S
Soybean Cyst Nematode (SCN) Races	R3
(SCN) Source	PI88788
— Root-Knot Nematode (RKN) —	
Southern - Peanut - Javanese -	

For more info or to view product performance data: www.goldenharvestseeds.com (800) 944-7333



Ratings are based on interpretation of data gathered by Syngenta and/or observations across areas of adaptation and may change as additional data are gathered.

©2017 Syngenta. Golden Harvest®, SCN Solutions™, the Alliance Frame and Syngenta logo are trademarks of a Syngenta Group Company. Roundup Ready 2 Xtend® is a registered trademark of Monsanto Technology LLC used under license. Golden Harvest Soybean varieties are protected under granted or pending U.S. or Canadian variety patents and other intellectual property rights. Seeds containing the Roundup Ready 2 Xtend trait may be protected under numerous United States and Canadian patents. It is unlawful to save Golden Harvest soybeans or Roundup Ready 2 Xtend soybeans for planting or transfer to others for use as a planting seed, regardless of the trait(s) within the seed. Use of Roundup Ready 2 Xtend varieties is subject to the terms of your license with Monsanto. Follow grain marketing and all other stewardship directions. Details of these requirements can be found in the Syngenta Stewardship Agreement.

1-9 Scale: 1 = Best, 9 = Worst, (-) = Not Available, NA = Not Applicable.

Icon Scale: ★ Best Choice ● Good Choice ▼ Average to Slightly Below Average ✘ Not Recommended

* Represents an assessment of stand establishment, chlorosis severity and yield performance

Published June 16, 2017. For use until July 01, 2018.