

\* Natural Black Oak

# MODERN DESIGN

that absorbs echos and removes noise

With our slatted panels you can make a slat wall or a slat ceiling that fits perfectly in line with the modern style.

With slatted acoustic panels, you can get not only a good looking and modern space, but also have a comfortable and quite and healthy environment, since this panel has 0.7 of echo absorption function.

# AKUPANEL

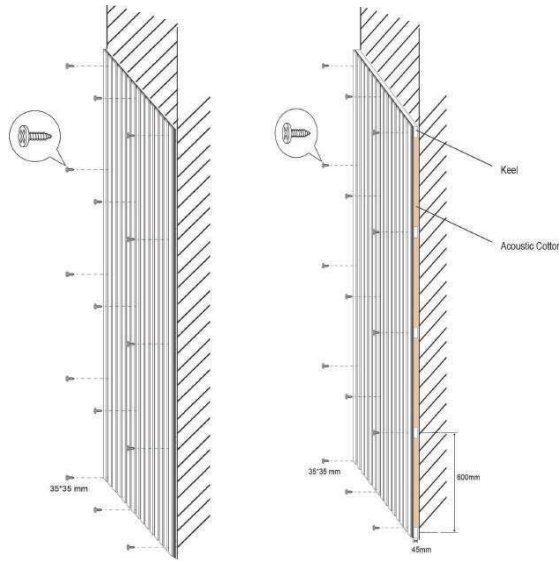
Are you having trouble of hearing what your friends are saying?

Reverberation is a big problem in many rooms but with the sound absorption function' s slatted panel, you can create an acoustic well-being for you, your family and your friends.

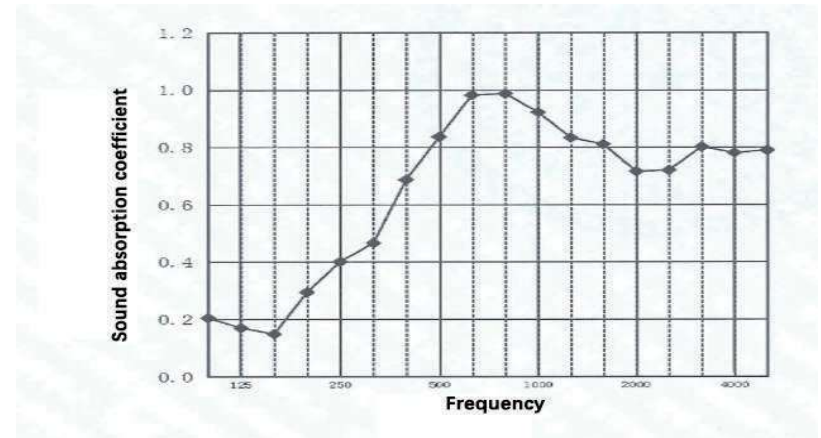


\* Iron Sword Oak

There are two ways to mount the panels - either directly on the surface or on a wood battens frame (see the right side drawings)with acoustic cotton behind. If you choose to mount the panels on a wood battens frame and insert acoustic cotton behind, you will achieve better sound absorption effect .



On the graph below you can see that the panel achieves an absorption coefficient at 1.0 at a frequency at 500Hz. Loud speaking and "ordinary" noise in the home are at a frequency between 500 - 1,000Hz and as seen on the graph it is at this point the slatted panel is the most effective.



# MOUNTING INSTRUCTIONS

**It's super easy to install the slatted panels.**

Choose whether to mount the panels directly on the wall or on battens with acoustic cotton behind it. It depends on how much you need on the sound absorption in the room.

If you prefer to mount the acoustic panels directly on the wall, then you can just drive a screw directly through the felt into the wall. When you mount the acoustic panels directly on the wall then you achieve sound absorption at 0.4, which will slightly reduce the echo in the room.

Another option is to mount the acoustic panels on a 50 mm wood battens frame with acoustic cotton behind the panels. When you do so, you achieve sound absorption around 0.85 which will offer you a best and quite space.

You can easily cut the panels by using a a normal saw. You also can cut holes in the panel for electrical outlets and lighting in the slat ceiling.

**Watch the mounting video on our website.**

\* Natural Black walnut



# SUSTAINABILITY

We care our acoustic slatted panels.

We need to protect our environment at the same time of enjoy our life. Our acoustic PET felt on the slatted panel is recycled and can be re-used again. The wood is the same too. Our factory have FSC certificate. You can use our environmentally friendly products with peace of mind.

# HOME DECORATION

A slatted wall will add modern and elegant expression to your design, as well as absorb the echo in the space.



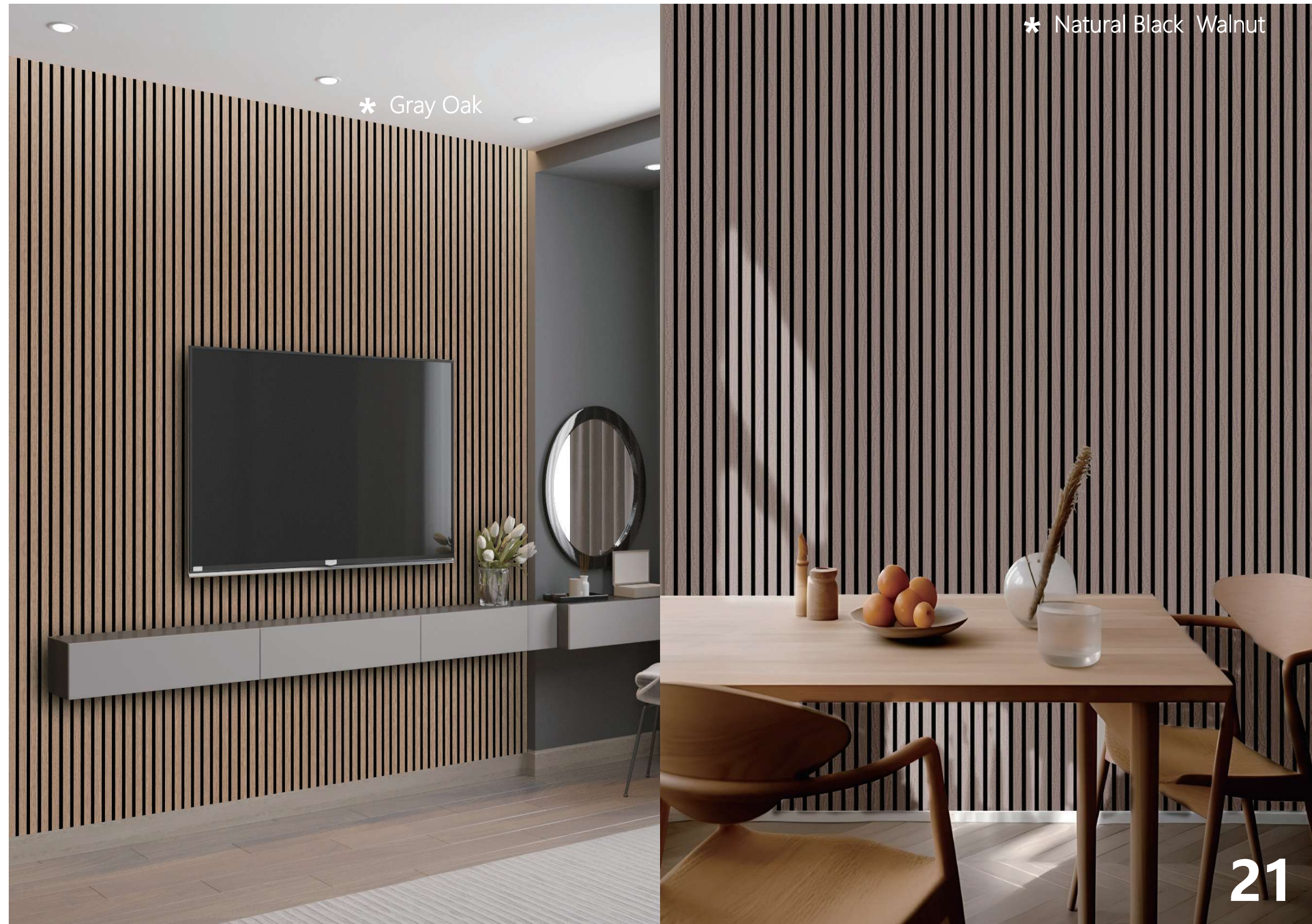
\* Smoked Oak



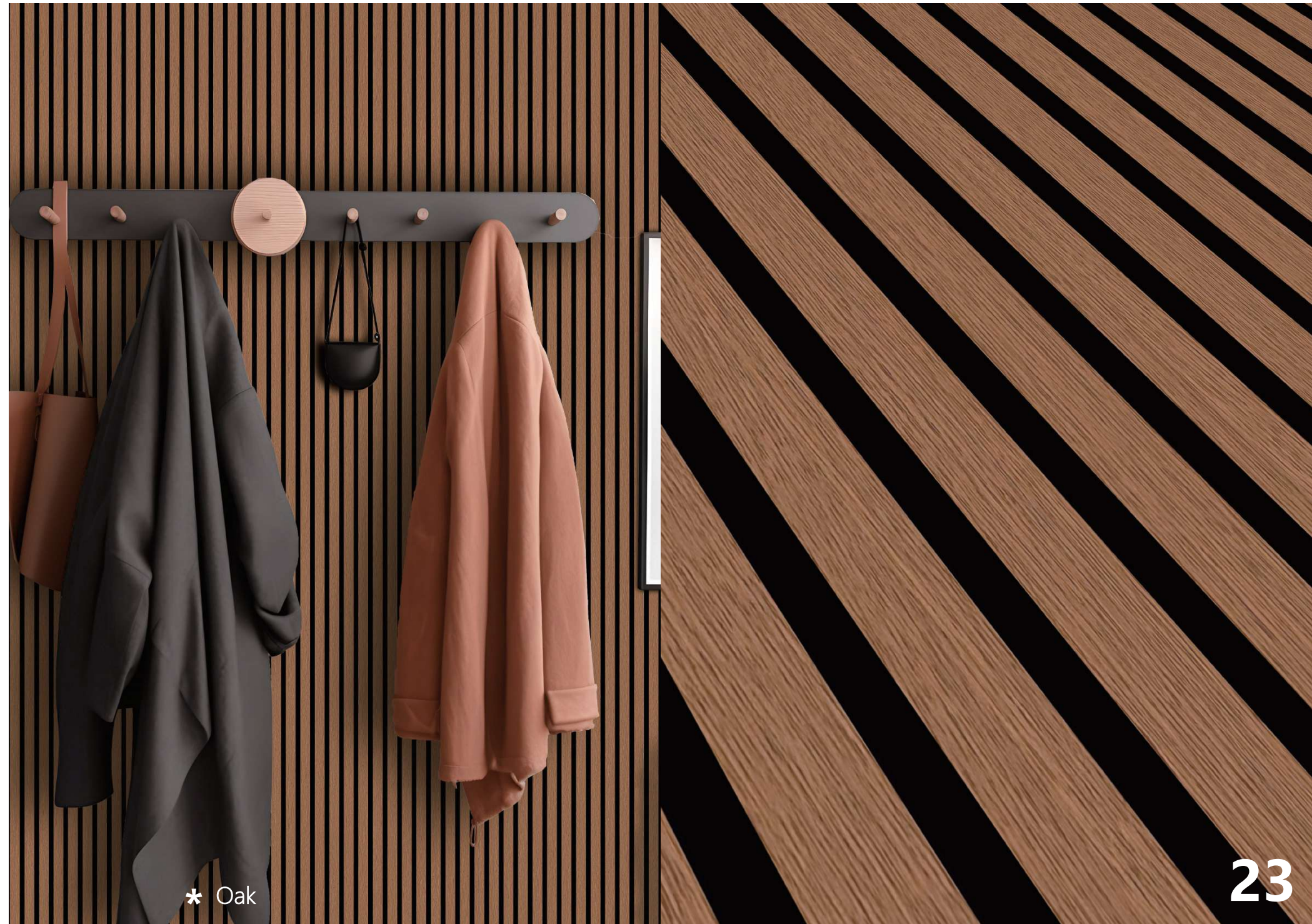


\* Gray Oak

\* Natural Black Walnut





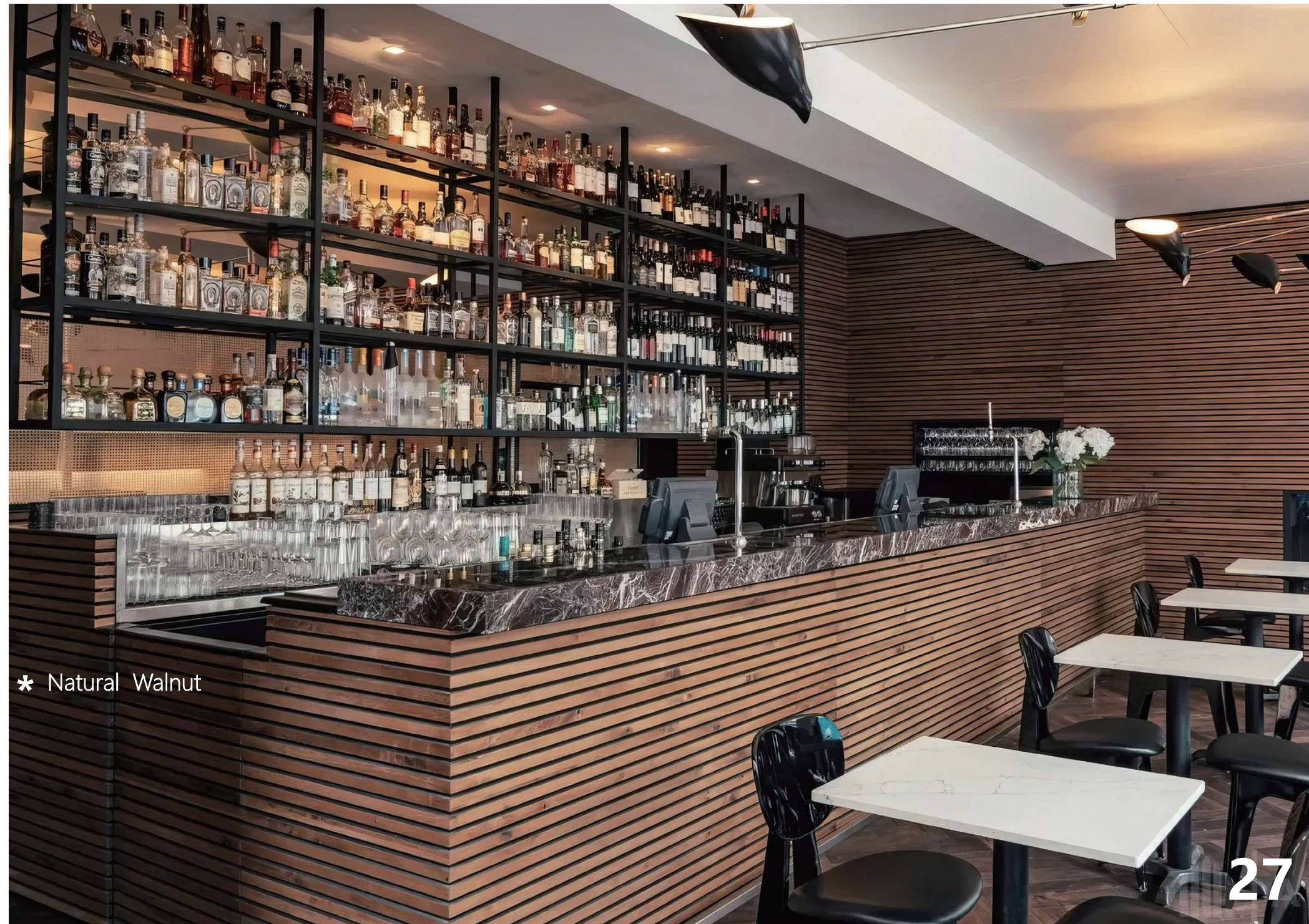


\* Oak

# COMMERCIAL PREMISES DECORATION

A slatted wall will add modern and elegant expression to your design, but also offer a quiet and silent space to the surrounding.

\* Natural White Oak



\* Natural Walnut

\* Iron Smord Wood

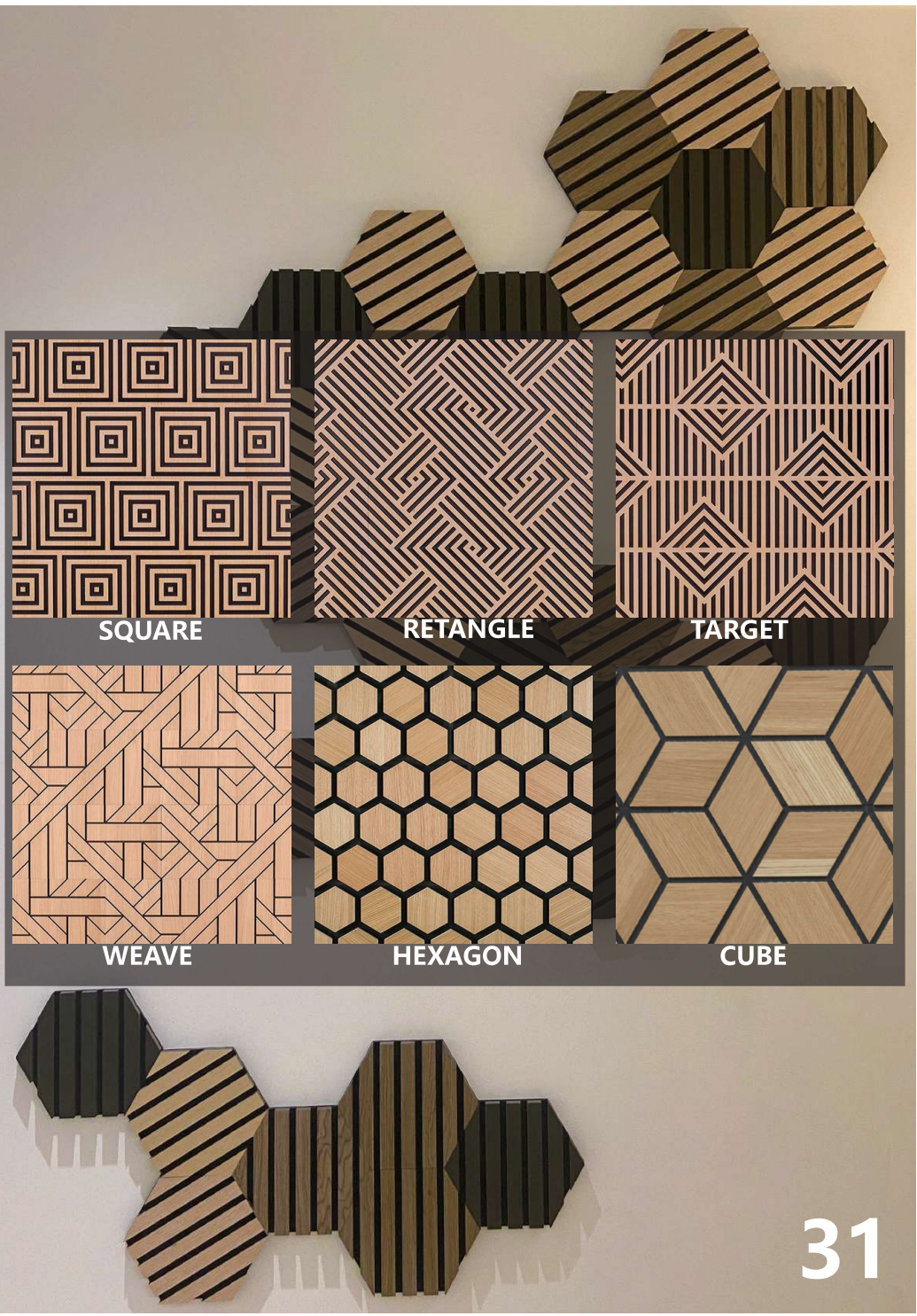


\* Walnut Wood



# CUSTOMIZED SHAPES

We accept customized of various shapes, reflecting personalization and also having sound absorption effects.

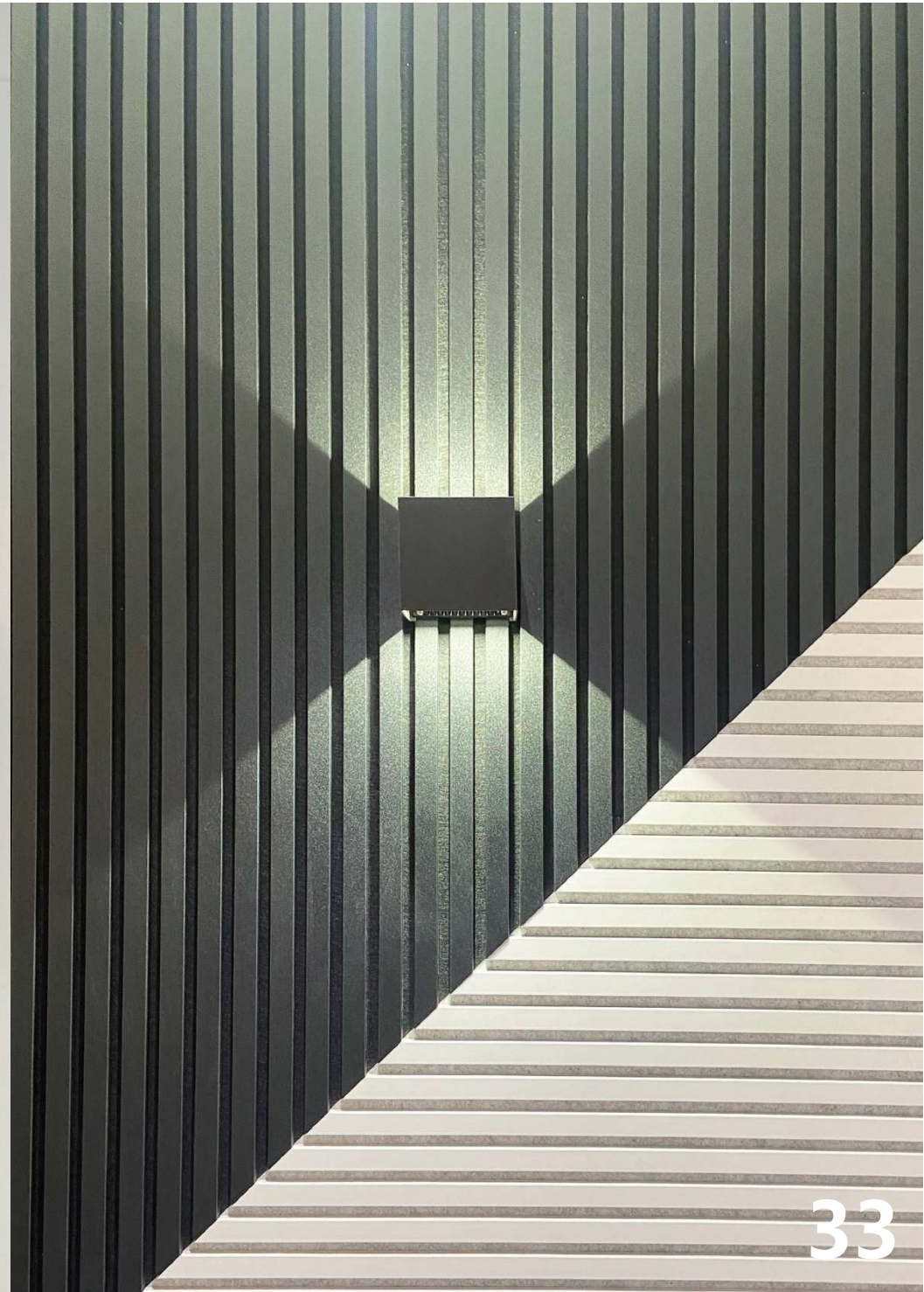




## Decoration of slatted wood panel

We provide some decorations for the slatted wood panel, which can make your slatted wall more beautiful without affecting the sound absorption effect.

\* Yellow Oak





**TGSX-8001**  
| White Oak |



**TGSX-8002**  
| Yellow Oak |



**TGSX-8003**  
| Walnut Wood |



**TGSX-8013**  
| White Oak 223 |



**TGSX-8014**  
| Natural Walnut |



**TGSX-8015**  
| Wild Oak |



**TGSX-8004**  
| Brizal Rosewood |



**TGSX-8005**  
| Silver Oak |



**TGSX-8006**  
| Iron Sword Wood |



**TGSX-8016**  
| Ebony |



**TGSX-8017**  
| Washed Black Oak |



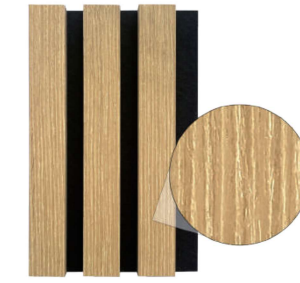
**TGSX-8018**  
| Natural Black Walnut |



**TGSX-8007**  
| Smoked Oak |



**TGSX-8008**  
| Etched Wood Grain |



**TGSX-8009**  
| Yellow Oak 200 |



**TGSX-8019**  
| Natural White Oak |



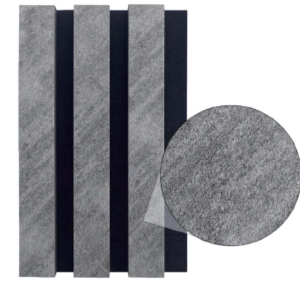
**TGSX-8020**  
| Thai Teak |



**TGSX-8021**  
| Gray Oak |



**TGSX-8010**  
| Natural Black Oak |



**TGSX-8011**  
| Industrial Gray |



**TGSX-8012**  
| Mountain Grain Walnut |



**TGSX-8022**  
| Smoked Oak 280 |



**TGSX-8023**  
| Dark Oak |



**TGSX-8024**  
| Willow Wood |