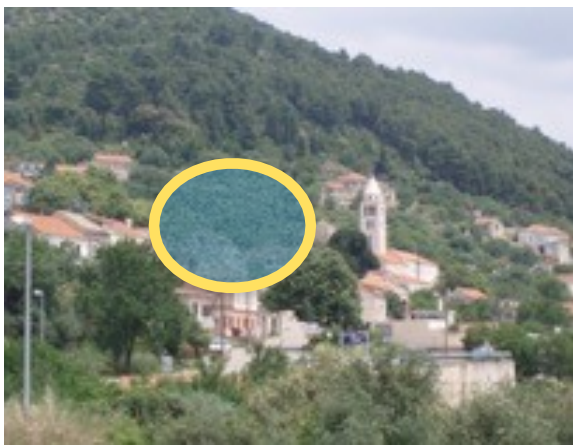

DRIVING INSTRUCTIONS

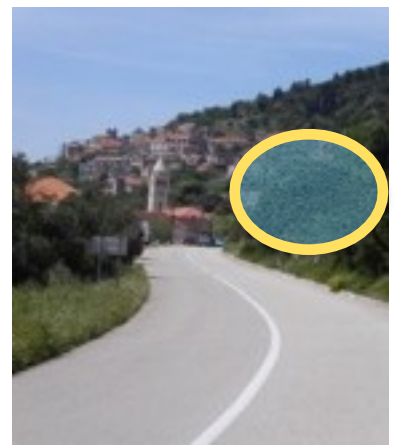
ARRIVING FROM SPLIT TO VELA LUKA - CAR FERRY

1. Arrive by ferry from Split which takes about 3.5 hours. The ferry lands at Vela Luka at the west end of the island. It will take you about 20 minutes to get to the house.
2. Turn right out of Ferry terminal Follow Route 118 heading for Korčula Town for 8.2km, passing by the town of Blato.
3. Turn right at Km 8 for Smokvica, Čara
4. Pass through Smokvica
5. Enter Čara and you will reach the Church - Turn immediately left and then immediately right.
6. House is half-way up on the right, just passed the supermarket (on the right)



The house (circled) in Čara, as approaching from Korčula

The house (circled) in Čara, as approaching from Vela Luka



ARRIVING FROM MAINLAND (OREBIČ) TO KORČULA (DOMINCE) - CAR FERRY

1. Arrive by ferry from Orebič on the Pelješac Peninsula which takes about 14 minutes
2. The Ferry lands at Domince close to Korčula town at the east end of the island
3. It will take you about 25 minutes to get to the house
4. Follow road leading to Korčula Town but not going down to Korčula
5. Follow Route 118 heading for Žrnovo, Čara, Smokvica, Vela Luka
6. Pass by the village of Pupnat
7. After another 6 Km, turn left at sign for Čara, Smokvica
8. At the bottom of the valley enter Čara
9. Enter Čara and you will reach the Church on your left.
10. Turn immediately right and then immediately right
11. House is half-way up on the right, just past the supermarket (right)

Lines marked in red are the two car ferry lines that serve the Island of Korčula

