

SILVERSTONE
INVESTMENT GROUP

LA MAISON BLANCHE
5 LUXURY RENTAL UNITS



The Silverstone Group is proud to present La Maison Blanche, comprised of five luxury apartment homes, in the heart of Logan Circle. Built in 1873, this historic mansion has been restored with a blend of art deco heritage and contemporary sophistication, to include state-of-the-art amenities, whilst maintaining its striking original façade.

Presiding over a notable corner on Q Street, this remarkable Art Deco building features oversized windows on three sides that flood the residences with an abundance of natural light, and offer extraordinary views of the neighborhood, and beyond. These one-of-a-kind luxury residences boast large open floor plans with soaring ceiling heights, incredible outdoor spaces, next-generation sound proofing, the finest European cabinetry and appliances, and Italian marble baths.

La Maison Blanche is located at the heart of one of Washington DC's most vibrant neighborhoods, with an array of bistros, bars, parks and theatres, all within walking distance.



RENTAL
UNITS

penthouse

2 Bed
2.5 Bath

unit 301

2 Bed
1.5 Bath

unit 201

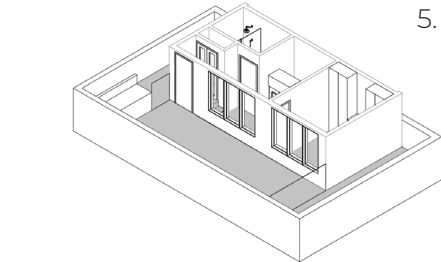
1 Bed
1.5 Bath

unit 101

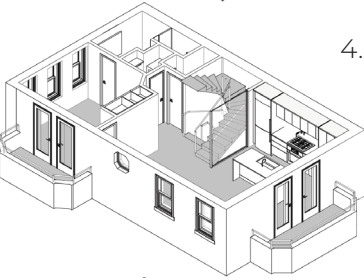
1 Bed
1 Bath

unit 102

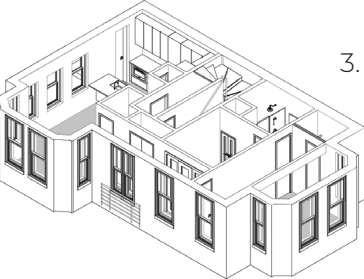
0 Bed
1 Bath



5.



4.



3.



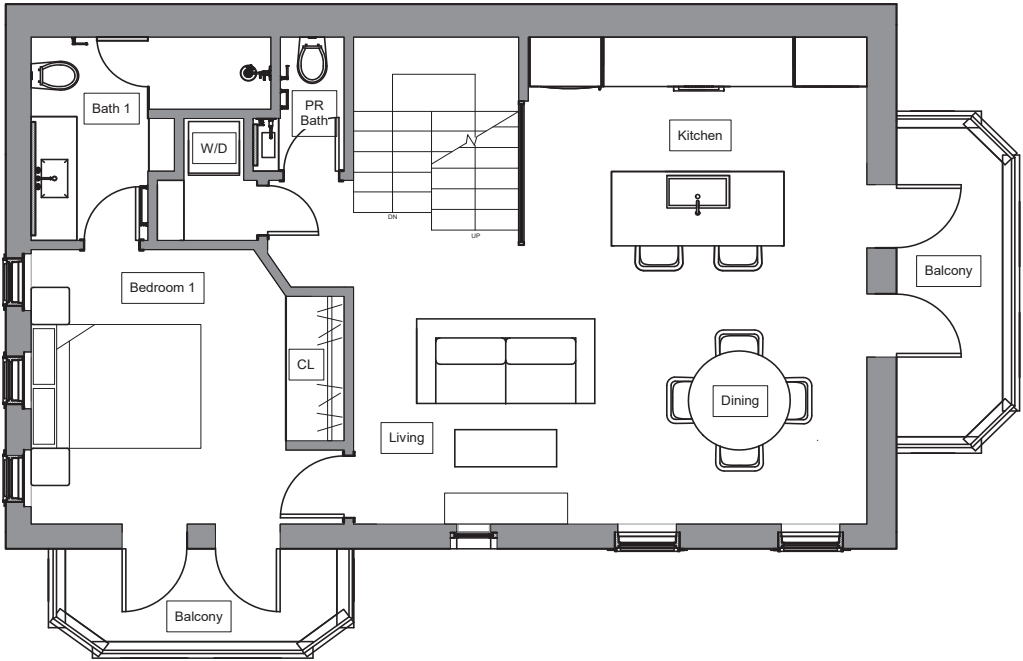
2.



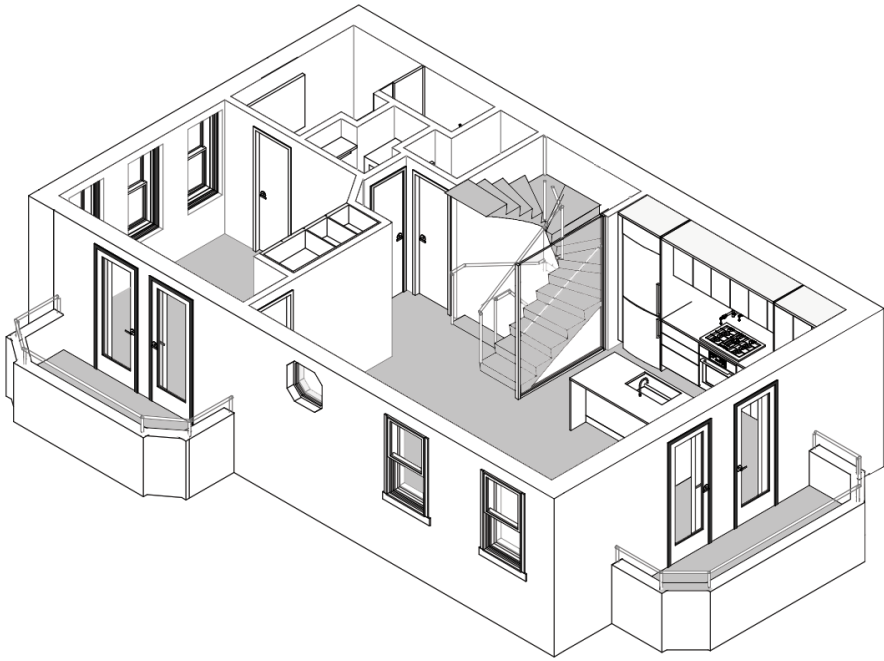
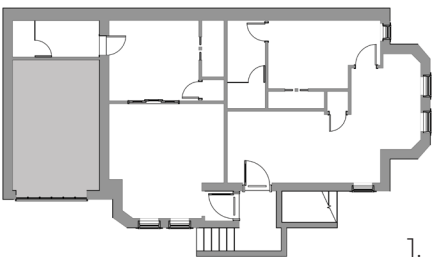
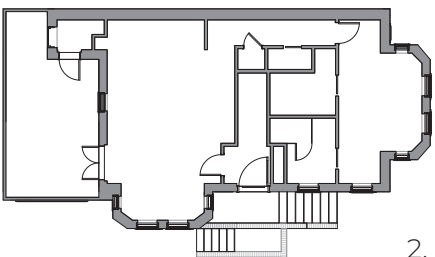
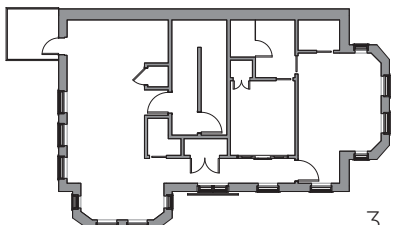
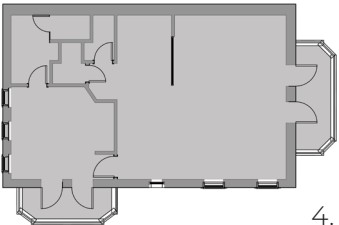
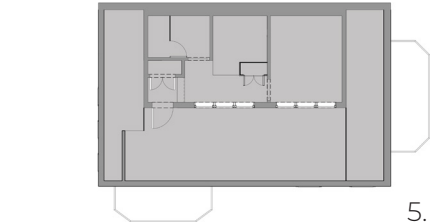
1.

FLOOR PLANS

penthouse

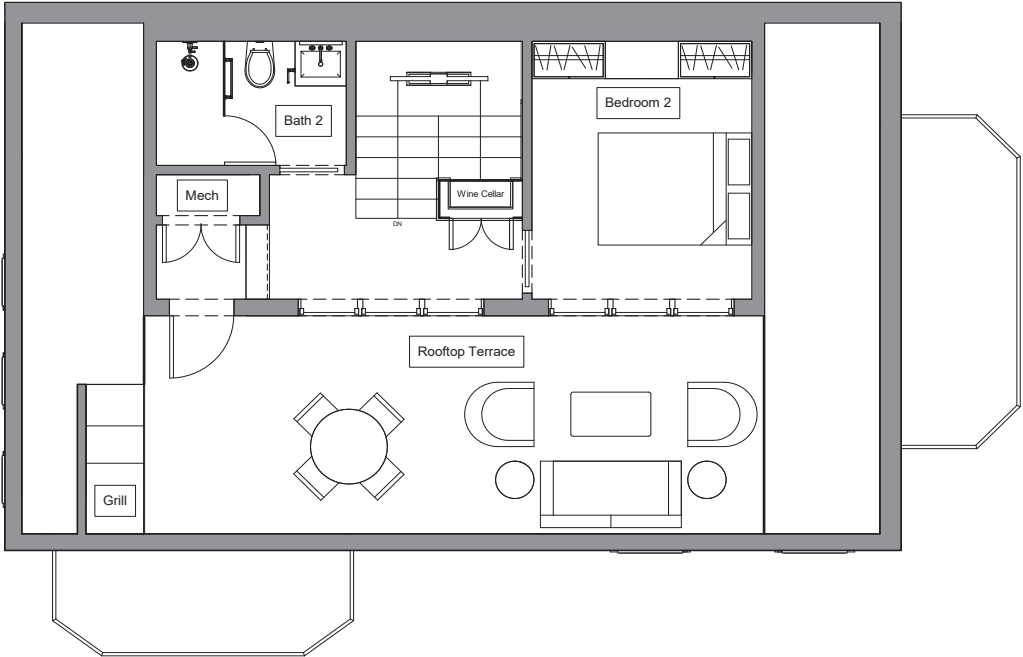


PH UNIT INCLUDES CELLAR GARAGE

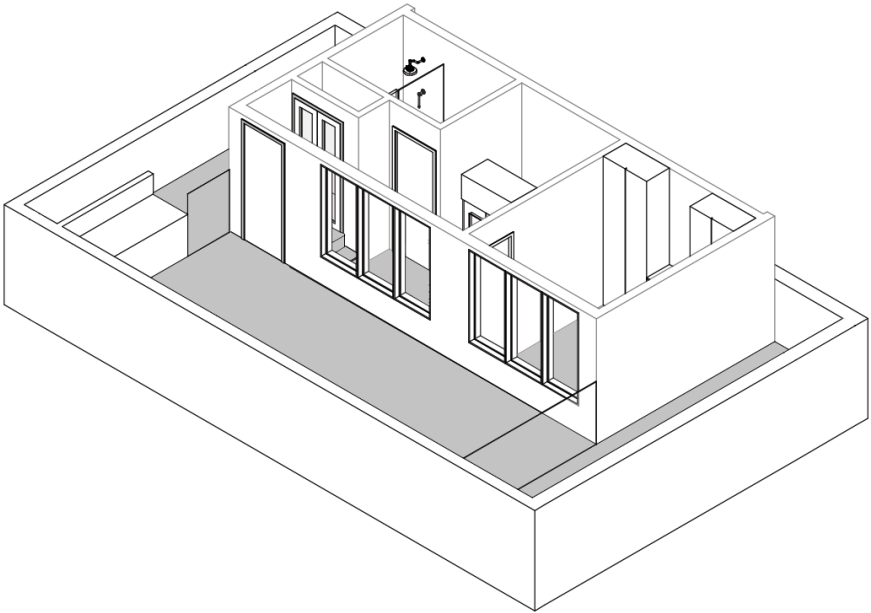
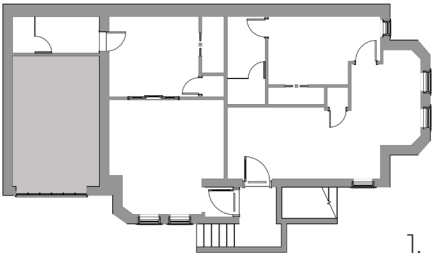
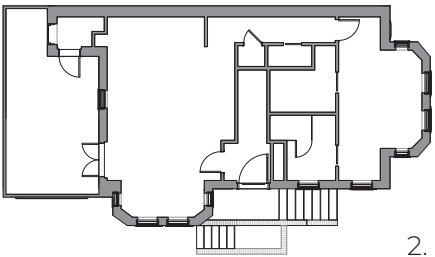
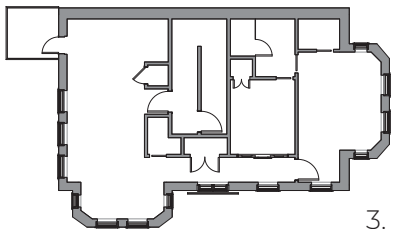
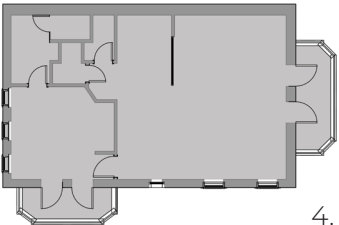
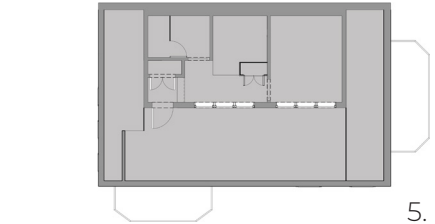


FLOOR PLANS

penthouse

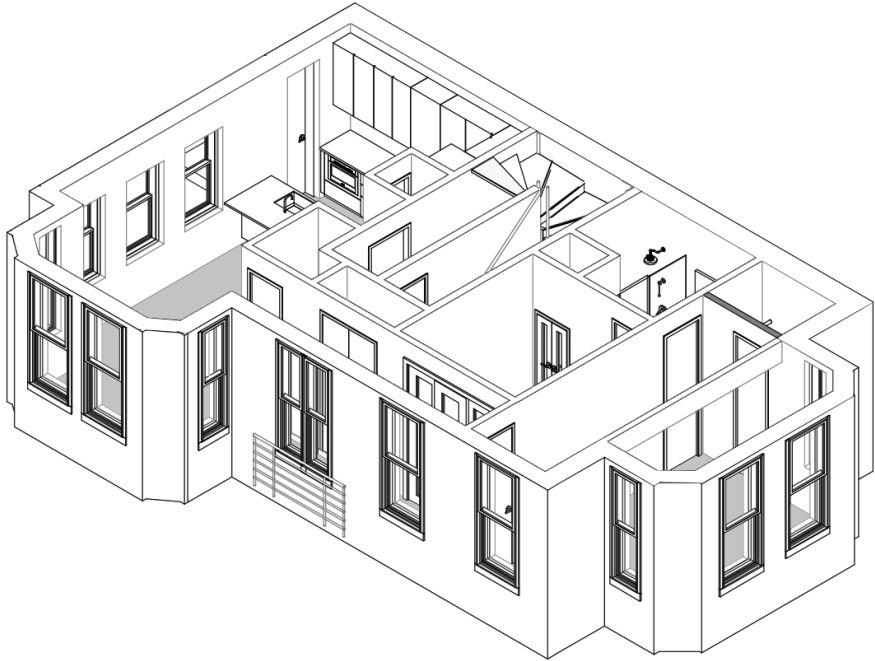
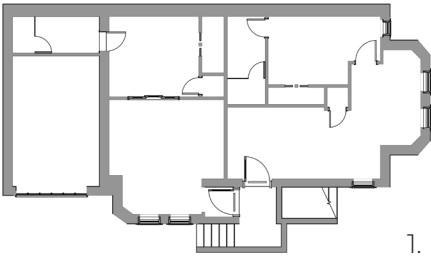
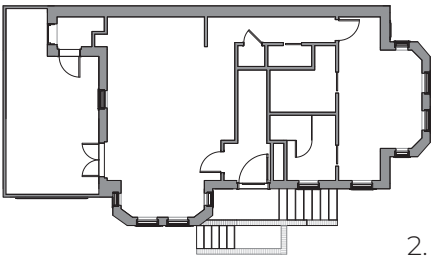
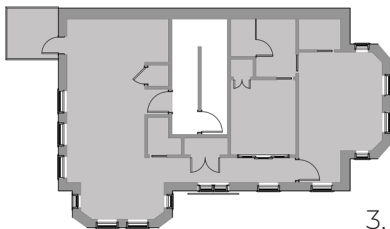
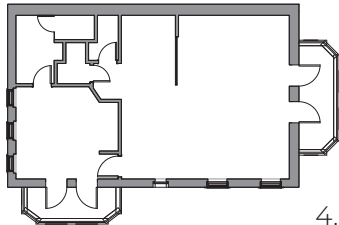
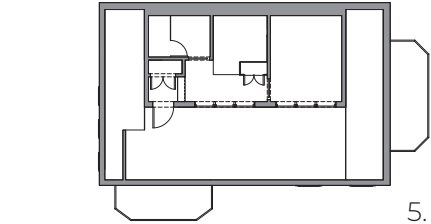
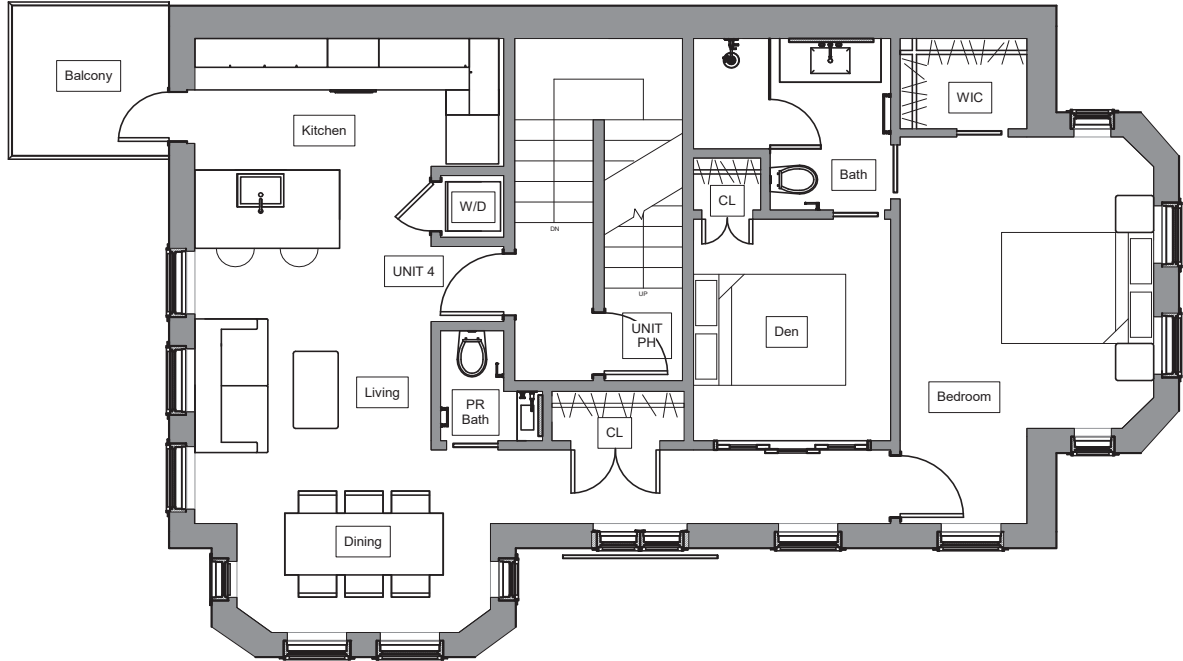


PH UNIT INCLUDES CELLAR GARAGE



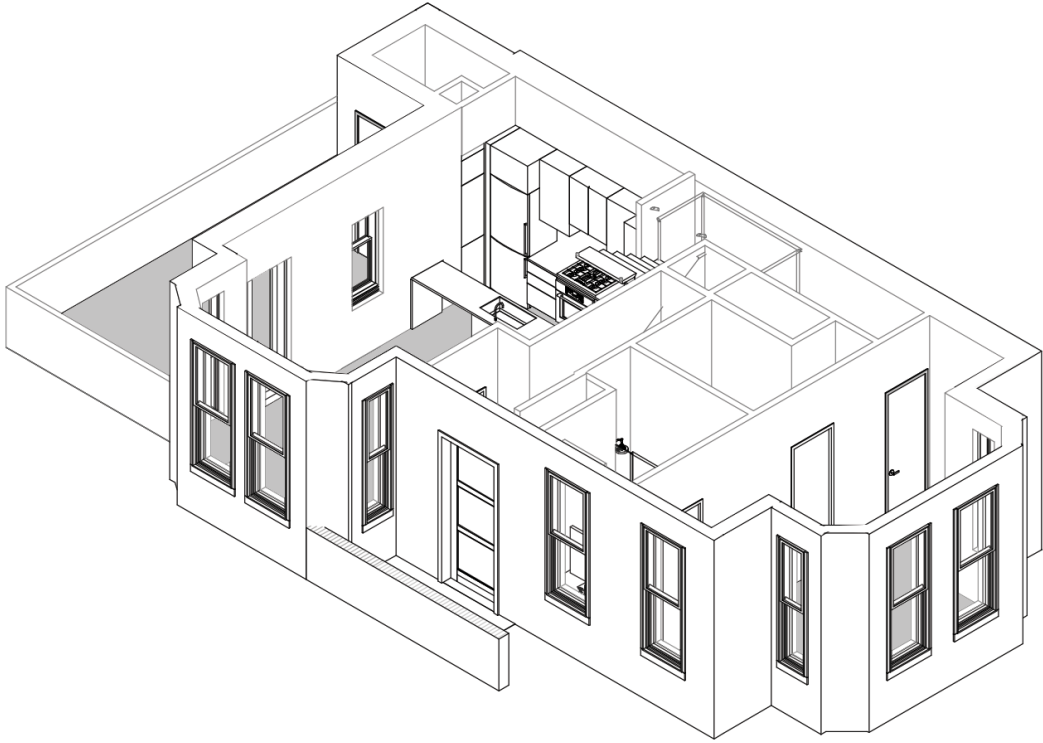
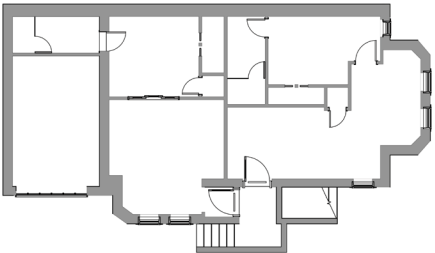
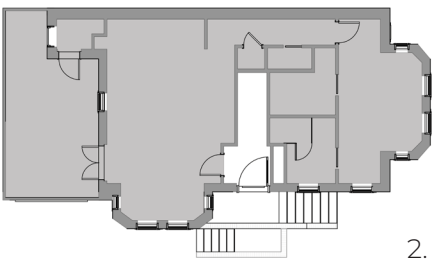
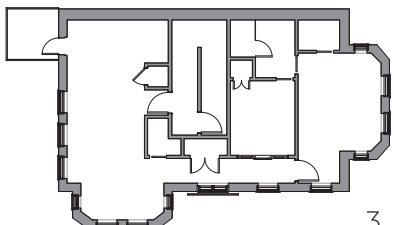
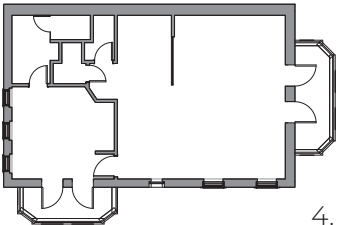
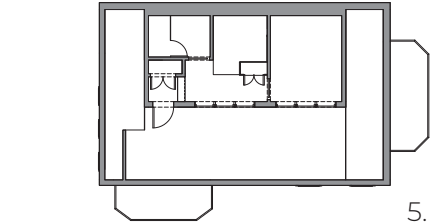
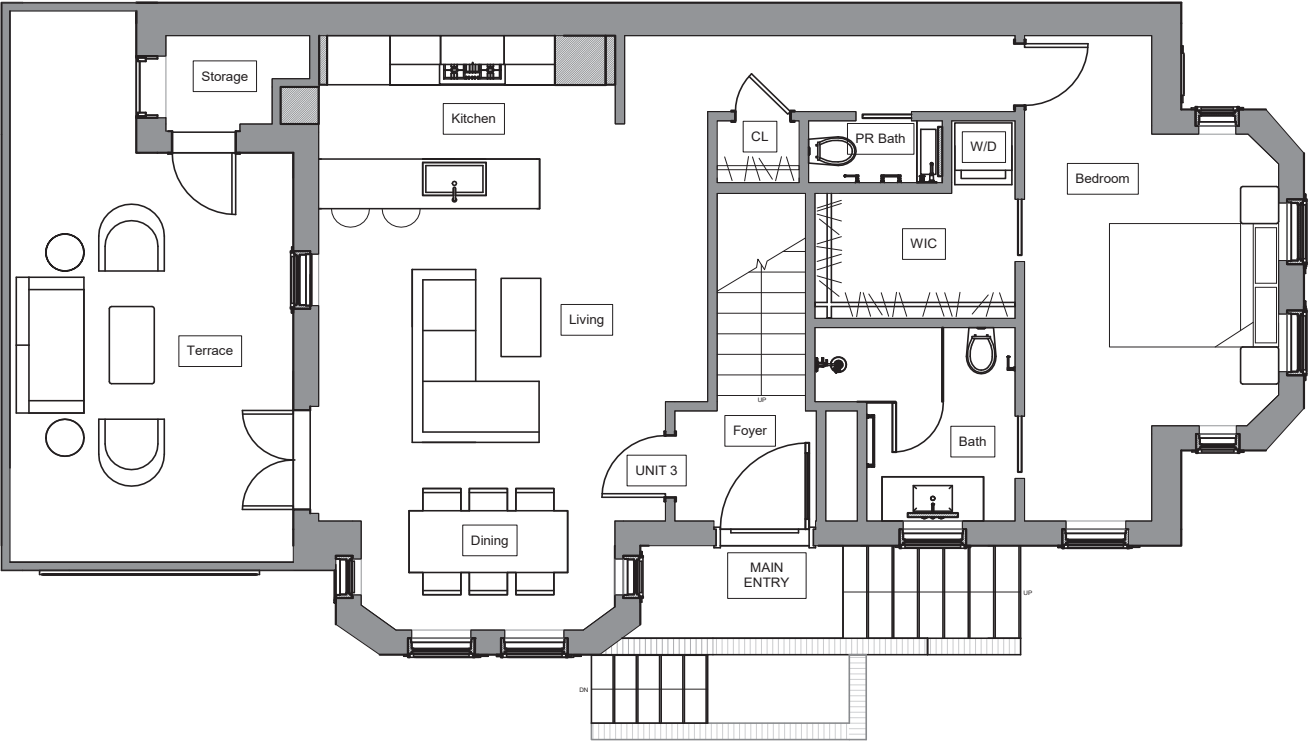
FLOOR PLANS

unit 301



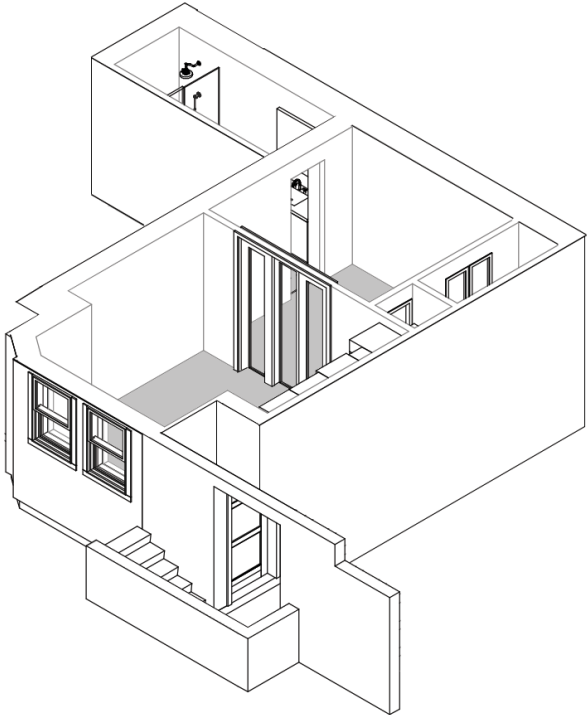
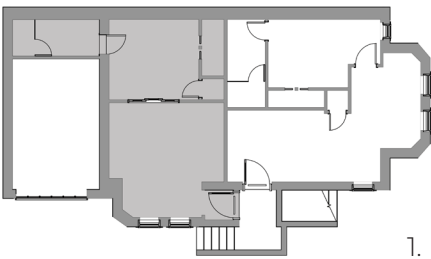
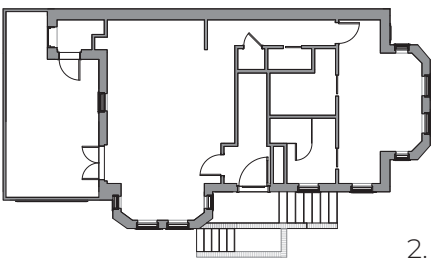
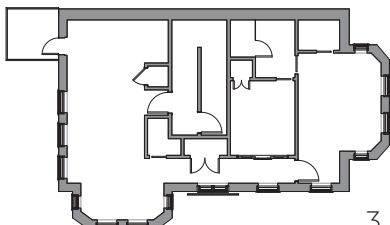
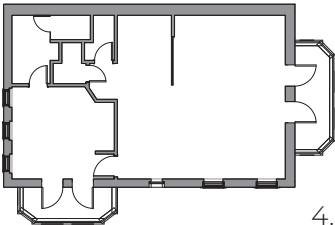
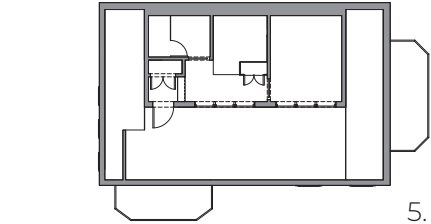
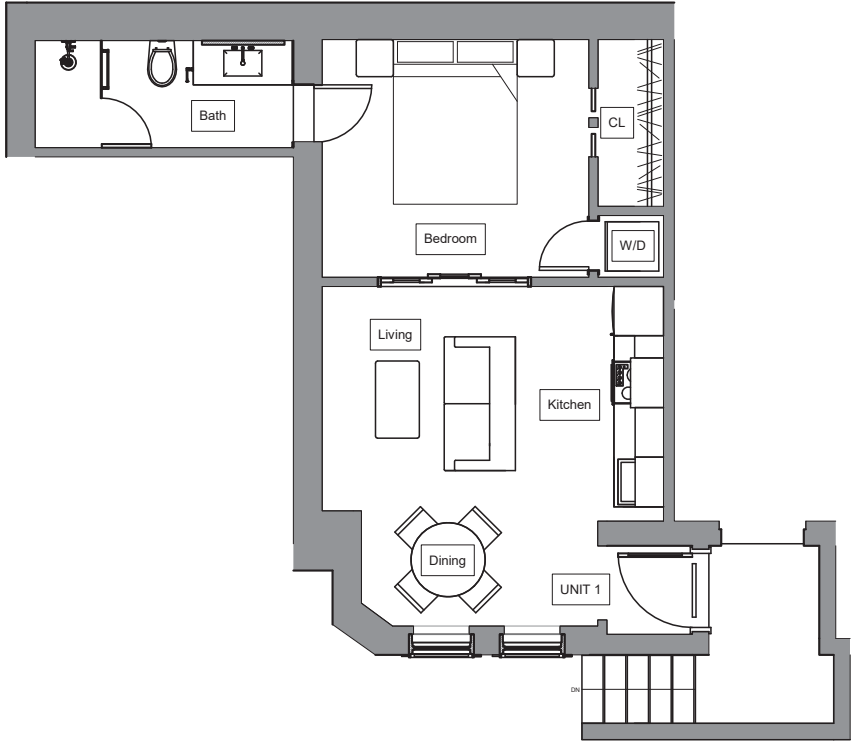
FLOOR PLANS

unit 201



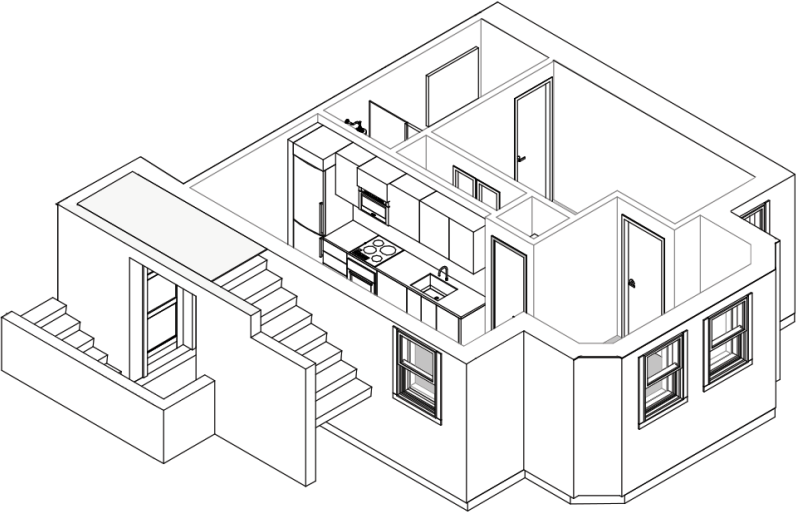
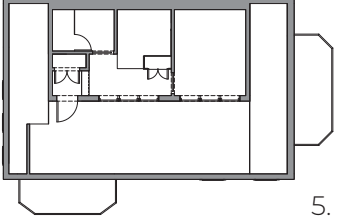
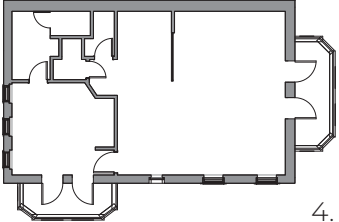
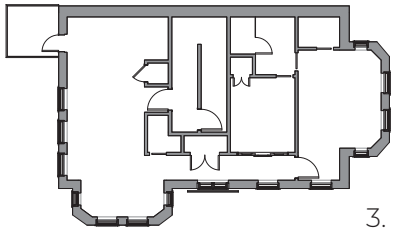
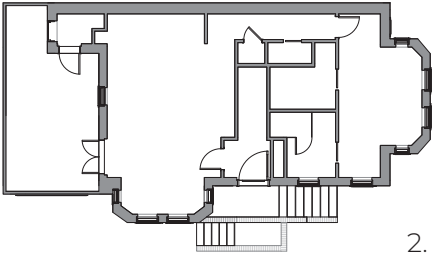
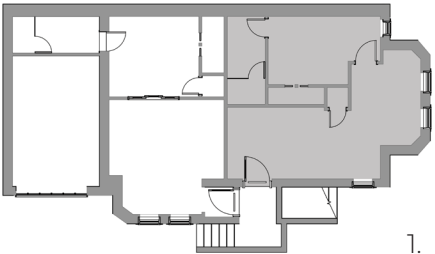
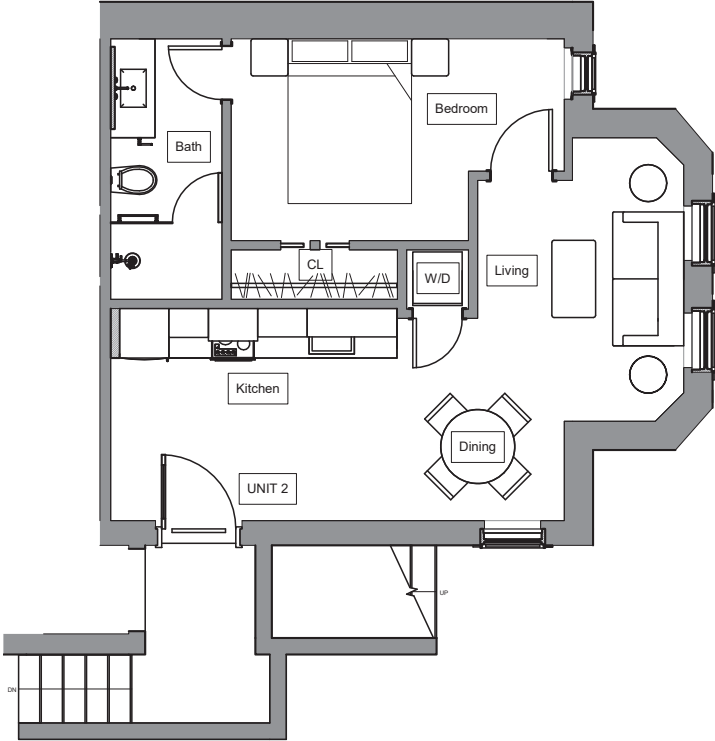
FLOOR PLANS

unit 101



FLOOR PLANS

unit 102



DETAILS

FF&E

residences

- Porcelanosa Kitchen Cabinetry
- Miele Paneled Kitchen Appliances
- Marble Floor and Shower Tile
- Brizo Fixtures
- Contemporary Bathroom Vanities
- White Oak Wide-Plank Flooring
- Oversized Windows
- High Ceilings
- Custom Milkwork
- Keyless Entry *
- Baldwin Door Hardware
- Crown and Trim
- Designer Lighting Fixtures
- Integrated LED Railing
- Private Outdoor Spaces *
- In-Unit Washer/Dryer
- LED Closet Rods
- Landscaped Entrance and Front Yard

penthouse

- Two-Levels
- Private Roof Deck
- Built-In Outdoor Kitchen
- Roof Garden
- Balcony off Bedroom and Kitchen
- Porcelanosa Built-In Closet
- Laundry Room
- Built-In Coffee Maker
- Wine Cellar
- 1-Car Garage

* AVAILABLE IN SELECT UNITS



PREVIOUS PROJECTS

gallery



