

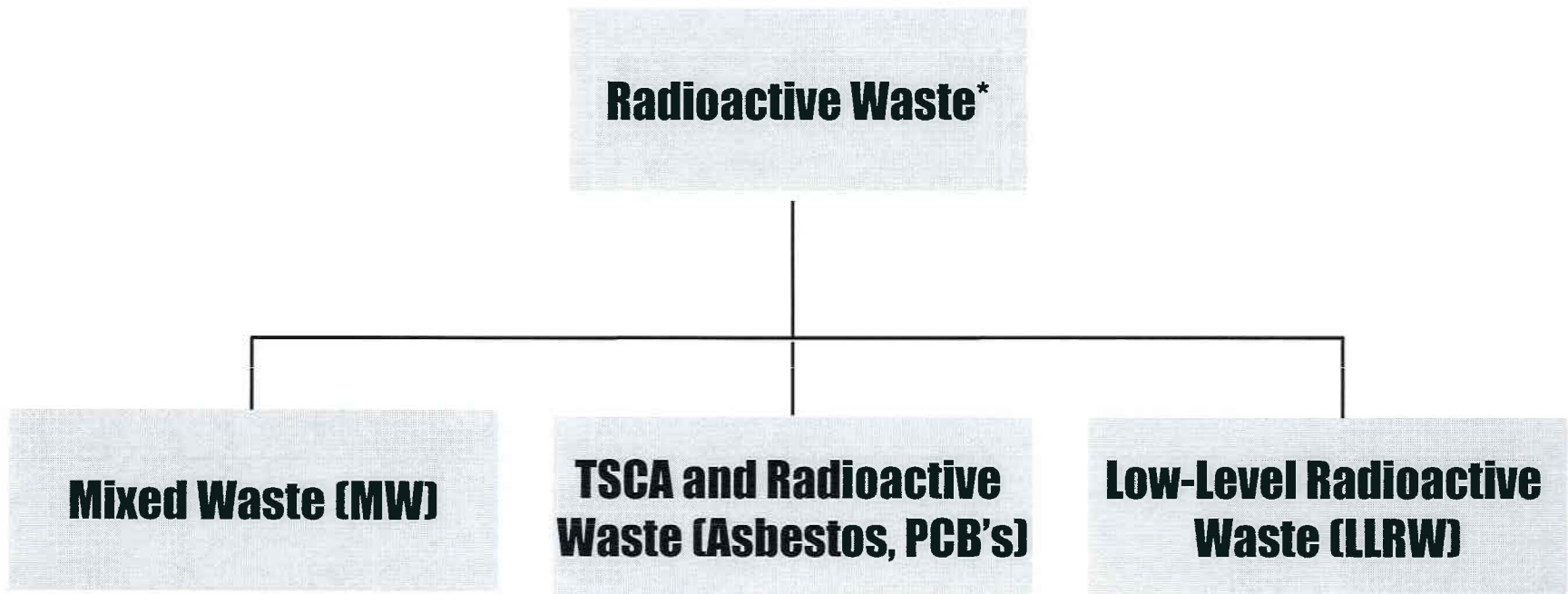
# **Low Level Radioactive and Mixed Waste Management Options**

Prepared By *X Subcommittee of the*

**ASME Radwaste Systems Committee**

ASME RW Systems Committee RW Short Course - 1991

# Low Level Radioactive and Mixed Waste Management Options

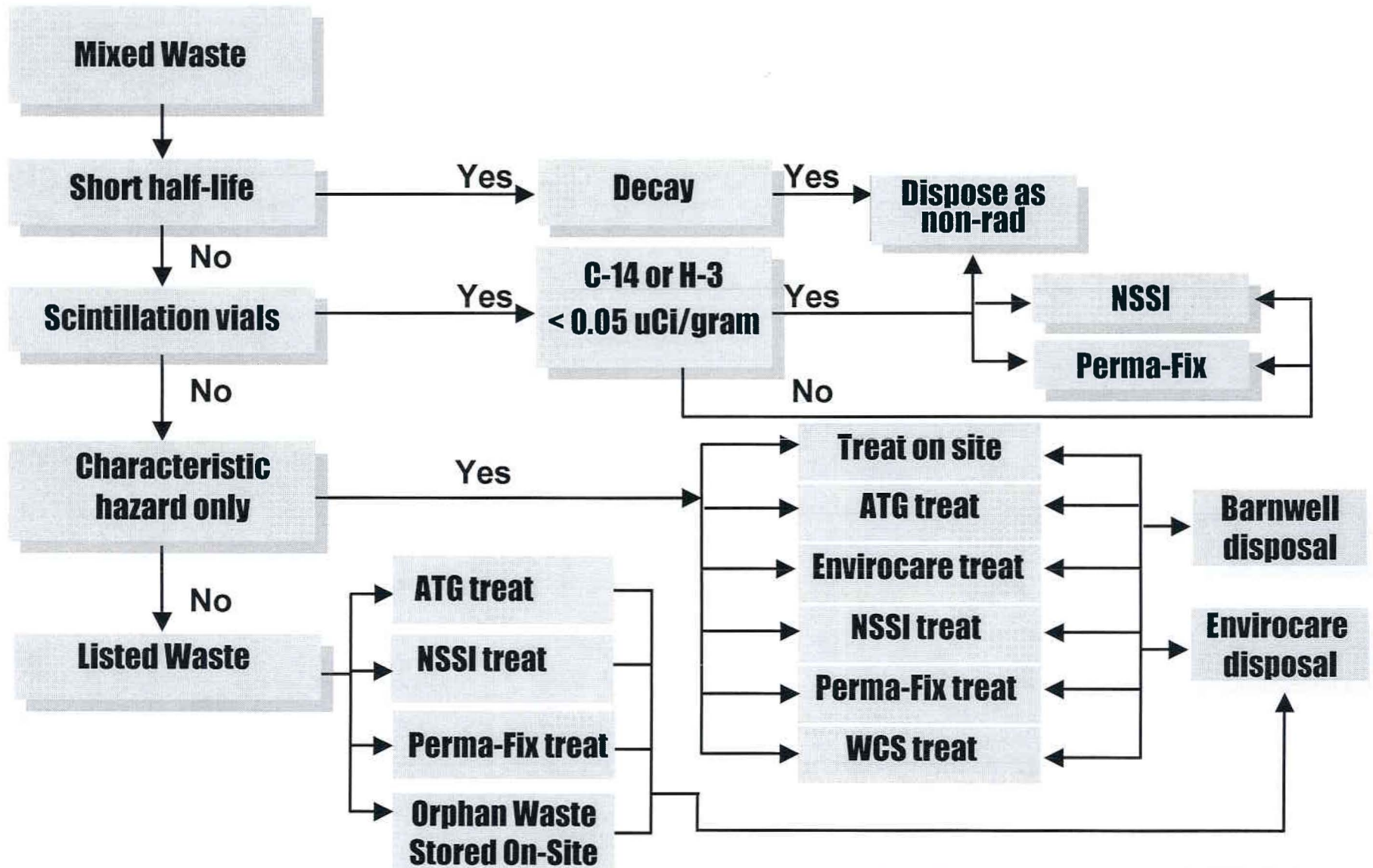


**\*Greater than Class C (GTCC) and Spent Fuel are not within this chart's scope**

# LLRW Processing Options for DAW

	<i>PermutitNW</i> <del>ATG</del>	<i>Energy Solutions Bear Creek</i> <del>Duratek</del>	<i>TOXCO MMC</i> <del>US Ecology</del>	<i>Studsink Memphis</i> <del>Raeo</del>	<i>ALAEON</i>
Incineration/Thermal	◆	◆			
Supercompaction	◆	◆	◆	◆	
Decontamination	◆	◆	◆	◆	
Solidification/ Stabilization	◆	◆			
Metals Processing	◆	◆	◆	◆	◆
Storage for Decay	◆			◆	
<i>Repackaging</i>	◆	◆	◆	◆	◆

# Mixed Waste Treatment Options

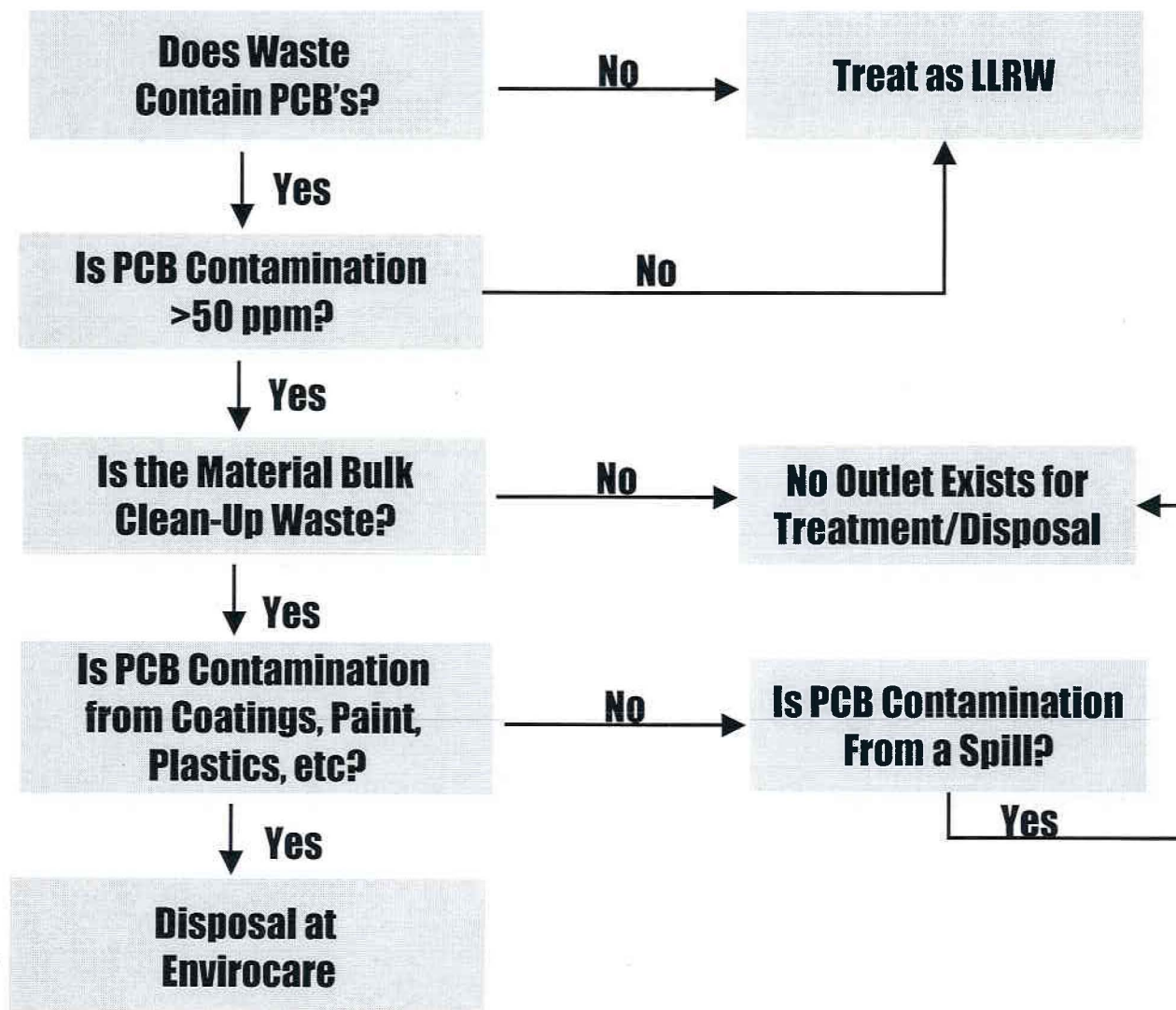


\*PERMA-FIX = PermaFix Gainesville FL, DSSI, M&EC

7



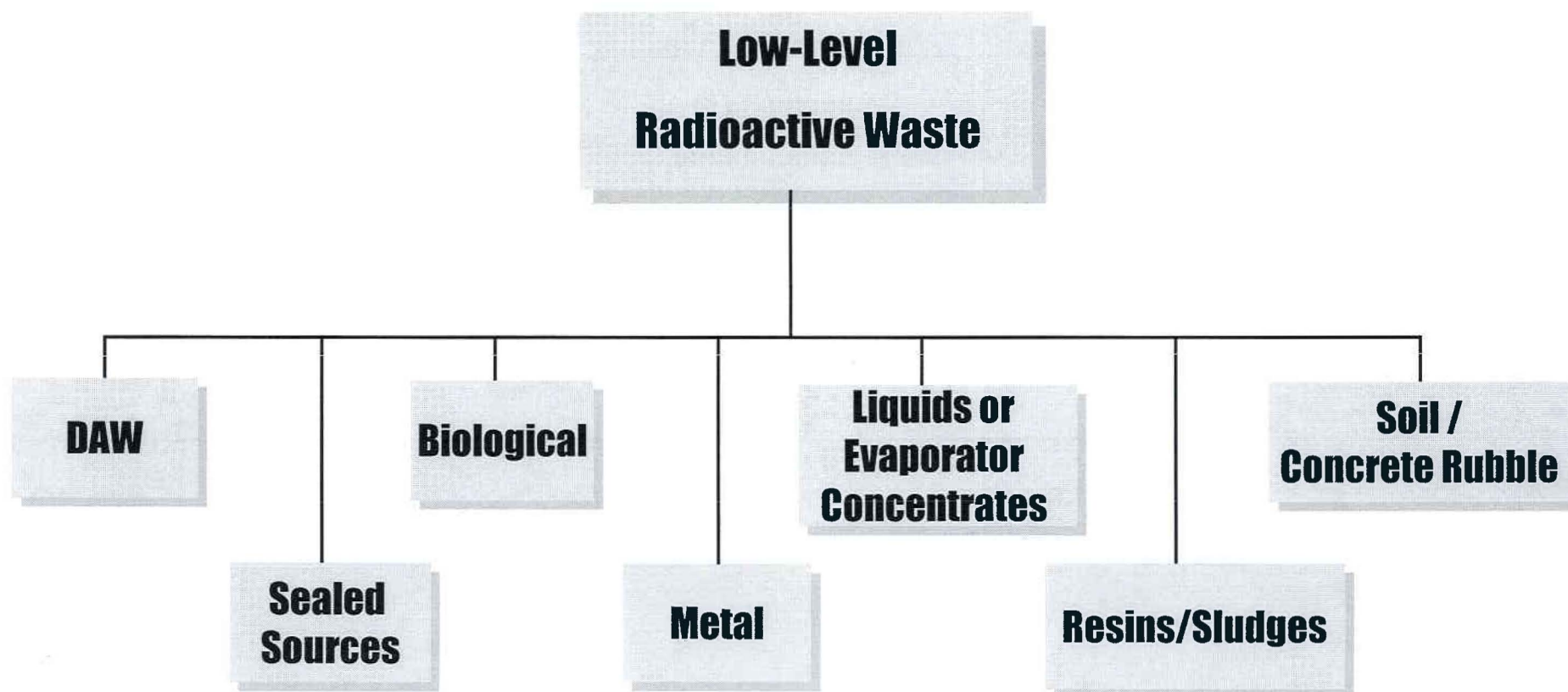
# TSCA Mixed Waste Treatment Options



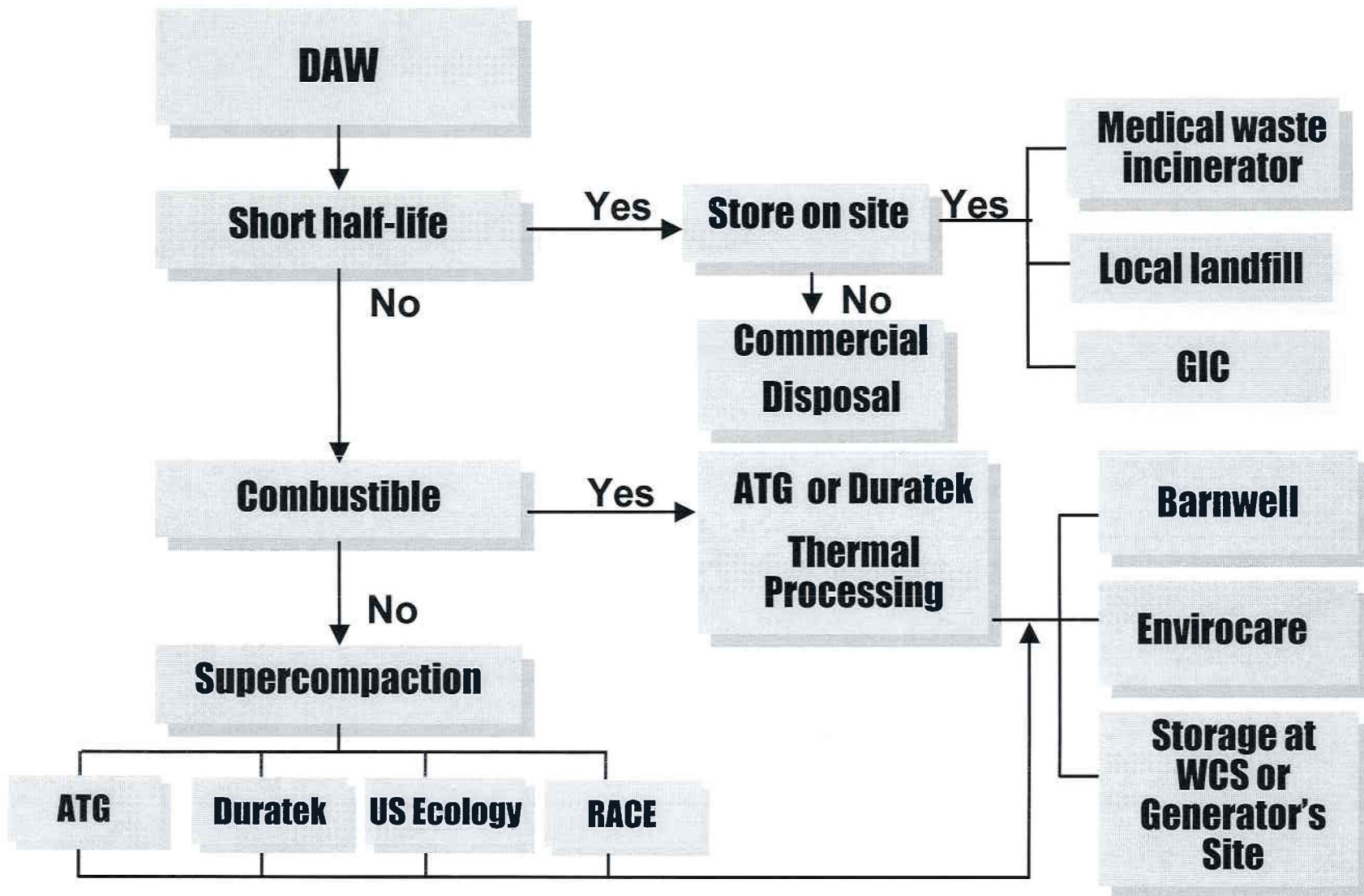
## LLRW and MW Disposal Options

- |                                      |  |
|--------------------------------------|--|
| <b>Barnwell</b>                      | <ul style="list-style-type: none"><li>• <b>Accessible to all generators for LLRW</b></li><li>• <b>Can bury most LLRW waste streams</b></li><li>• <b>Highest cost option</b></li><li>• <b>By 2008 will only be available to Atlantic Compact Generators</b></li></ul> <hr/> |
| <b>Envirocare</b>                    | <ul style="list-style-type: none"><li>• <b>Difficult for small generators to deal with directly</b></li><li>• <b>Easily accessed through a waste processor</b></li><li>• <b>Only permitted mixed waste disposal in the U.S.</b></li></ul> <hr/>                            |
| <b>US Ecology<br/>Richland</b>       | <ul style="list-style-type: none"><li>• <b>Can only bury LLRW from NW and Rocky Mountain Compacts</b></li><li>• <b>Can accept NORM/NARM from throughout the U.S.</b></li><li>• <b>Can accept certain sealed sources.</b></li></ul> <hr/>                                   |
| <b>Waste Control<br/>Specialists</b> | <ul style="list-style-type: none"><li>• <b>Burial of NORM waste</b></li><li>• <b>May store LLRW for indefinite periods</b></li><li>• <b>Treatment and storage of mixed and TSCA waste</b></li><li>• <b>Attempting to license LLRW disposal</b></li></ul>                   |

# LLRW Waste Management Options

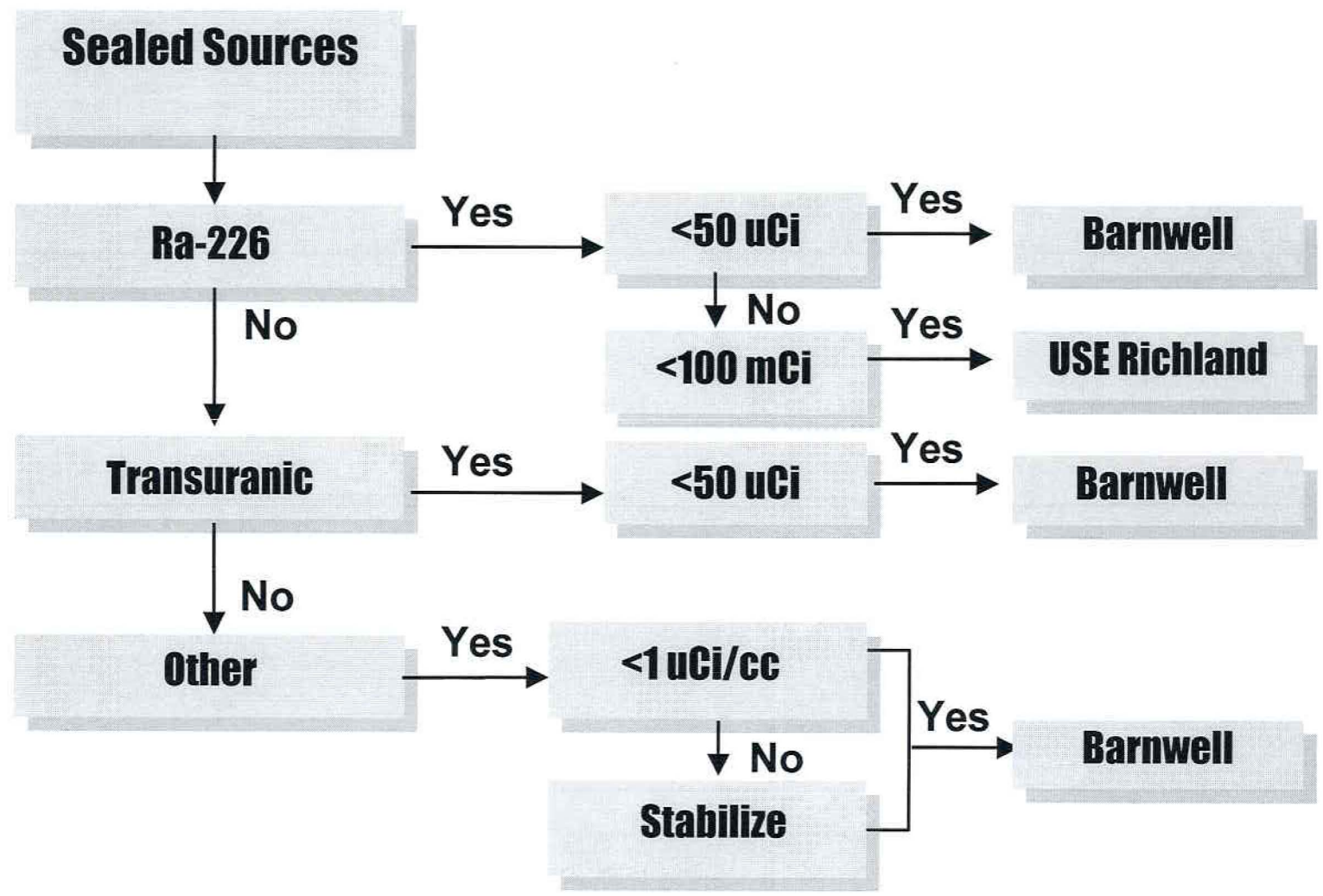


# LLRW Waste Management Options for DAW

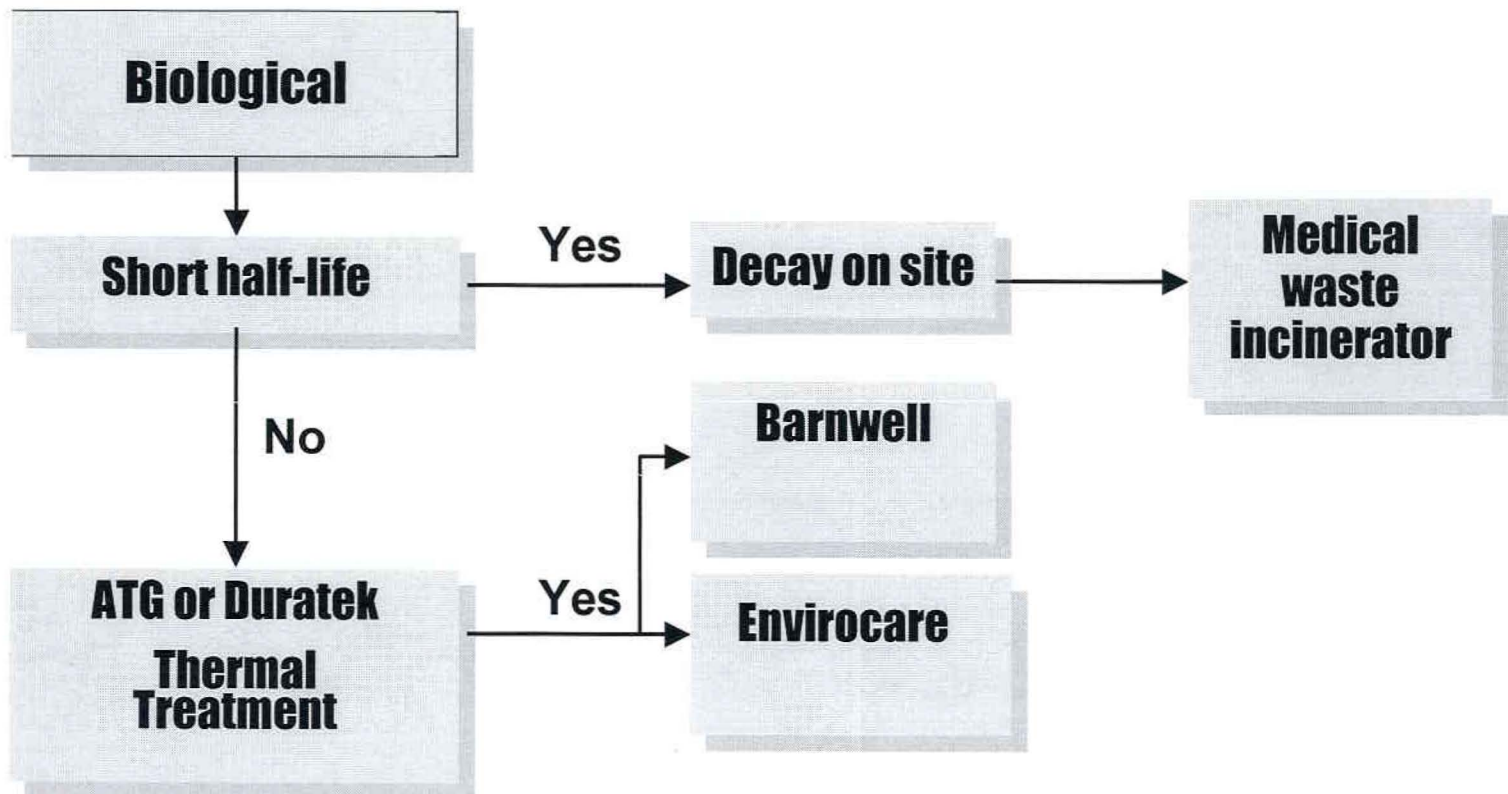




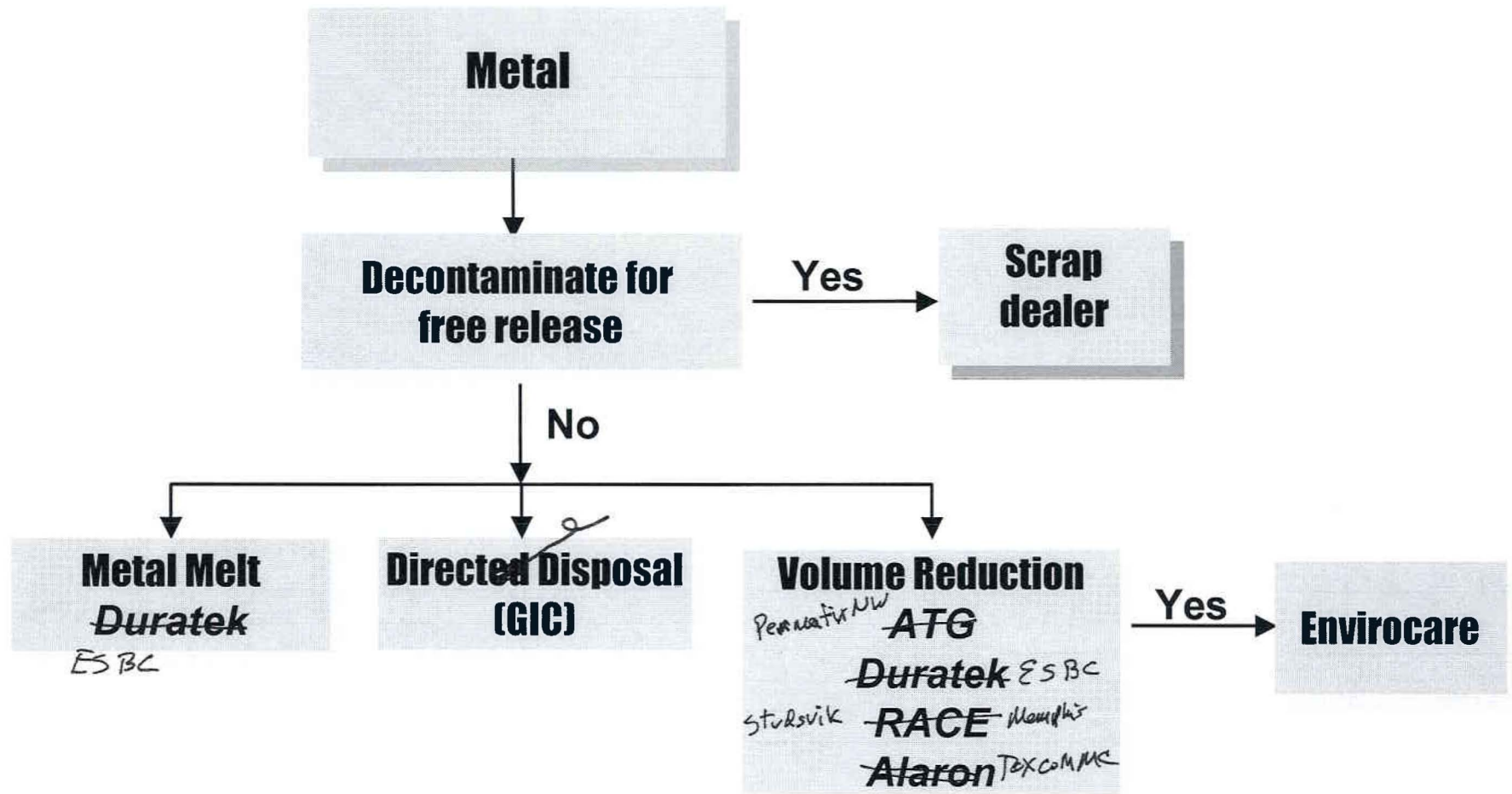
# LLRW Waste Management Options for Sealed Sources



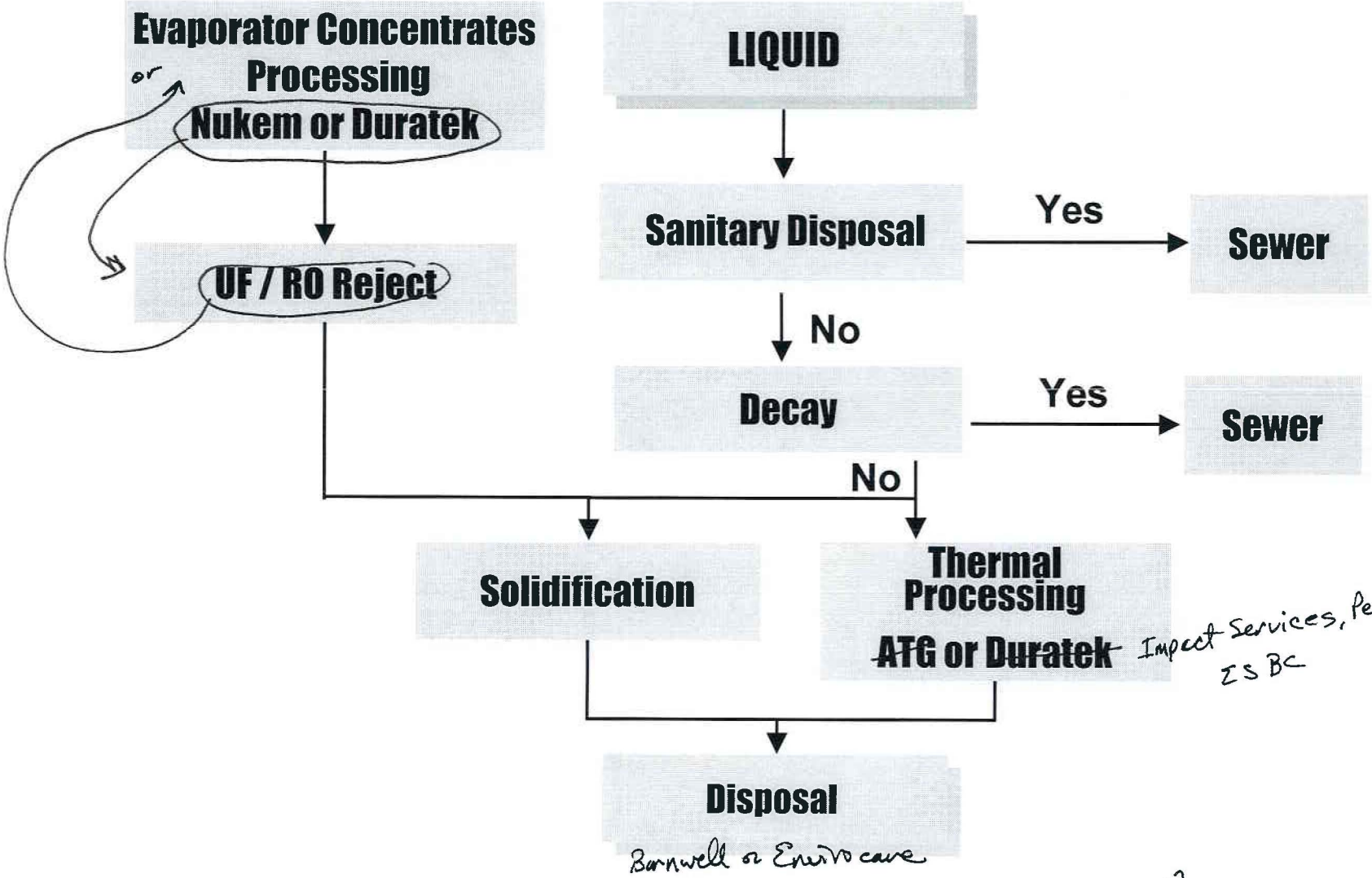
# LLRW Waste Management Options for Biological



# LLRW Waste Management Options for Metals

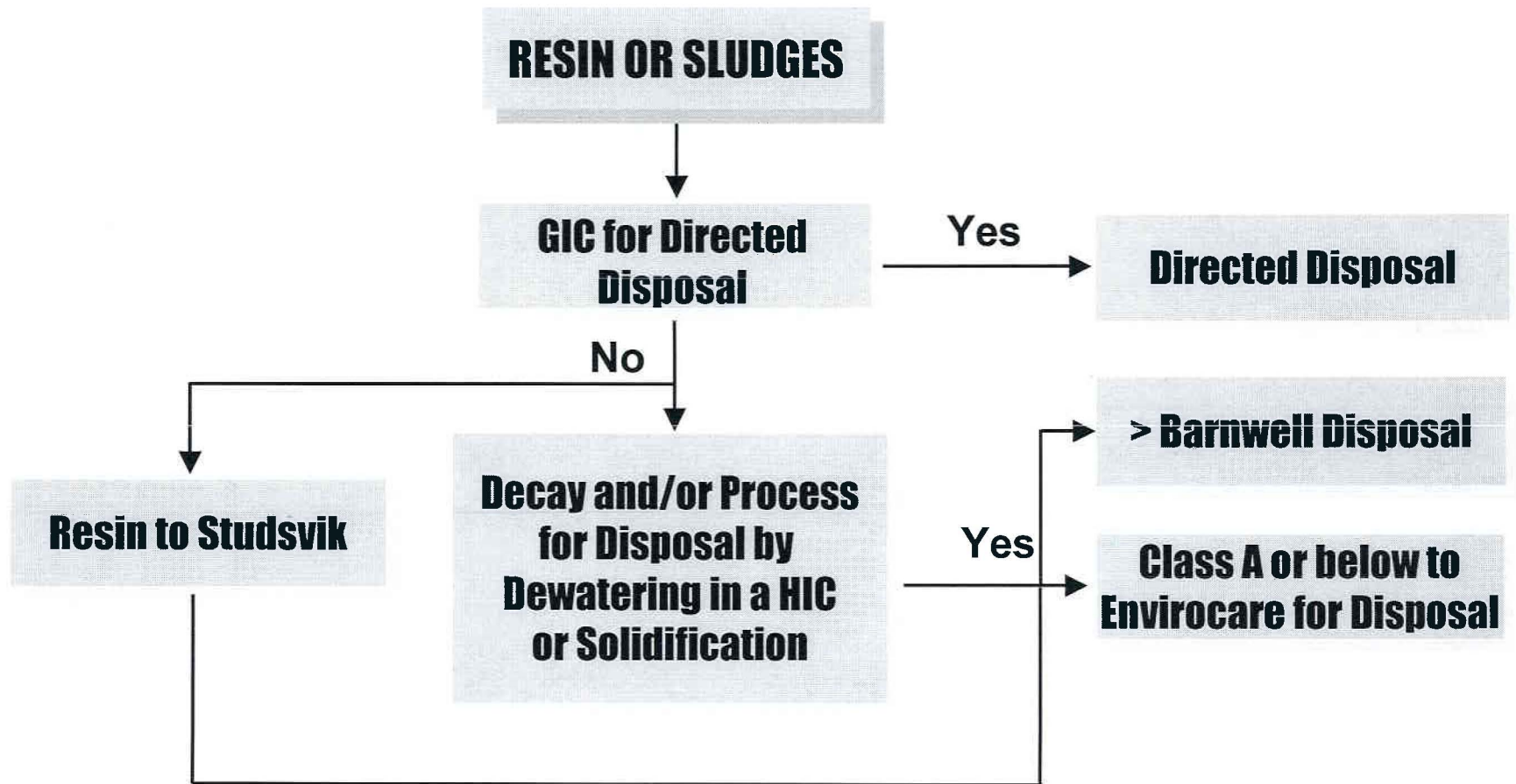


# LLRW Waste Management Options for Liquids or Evaporator Concentrates





# LLRW Waste Management Options for Resins or Sludges



# LLRW Waste Management Options for Soils

