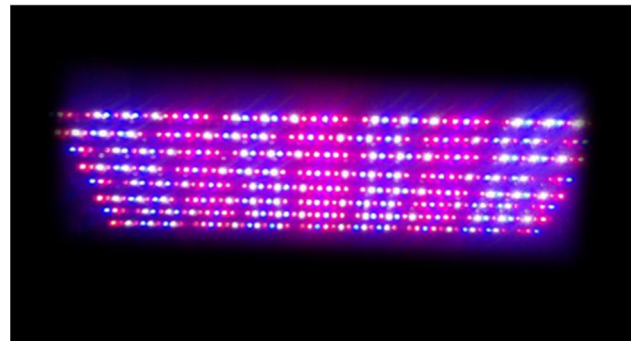
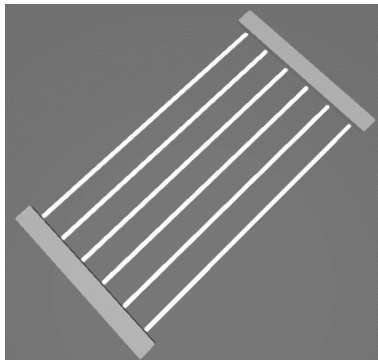


# LED GROW RACK SERIES - VEG

## THE HIGH PERFORMANCE

*LED Fixture Series for Large Scale  
Indoor Farming Operations*

## GR Series-Veg

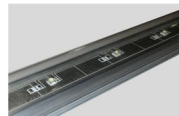


### KEY FEATURES INCLUDE:



#### Multiple Spectrum Options

Ensure that the new lighting will match your current aesthetics, and allows for custom color options.



#### Long Lasting LED Chips



#### 5 Year Warranty

Optional: Industry Leading 10 Year Warranty on all LEDs and external drivers.



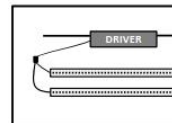
#### Many Configuration Options

Contact factory about customizing to site requirements



#### Manufactured in America

With domestic and imported components. Factory: Southeastern PA. Higher quality control, faster delivery times, and new domestic job creation.

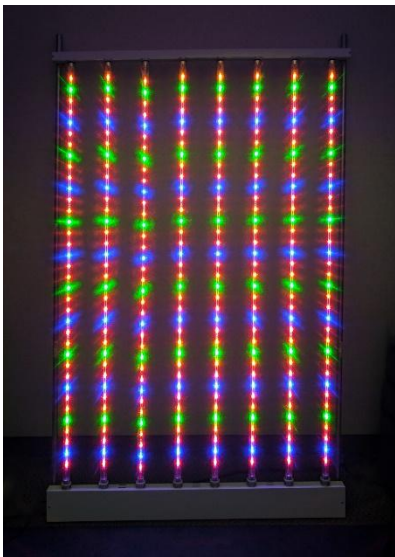


#### Independent Class II Driver

Safety, improved thermal management, and extended lifetime are gained by locating the driver remote from the LED Engine.



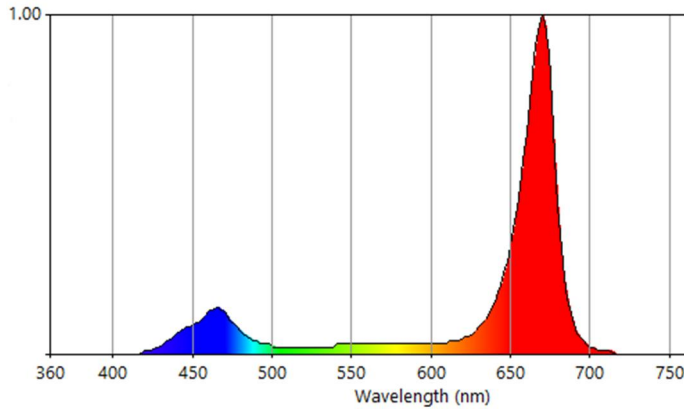
# LED GROW RACK SERIES - VEG





LED Lighting | Forged in America™

# LED GROW RACK SERIES - VEG



GR 400-V (4 Tubes)  
 GR 600-V (6 Tubes)  
 GR 800-V (8 Tubes)

Wattage – 400, 600, 800W  
 Voltage – 100-277VAC

## Single Rack – GR xxx-V (from Canopy)

24"

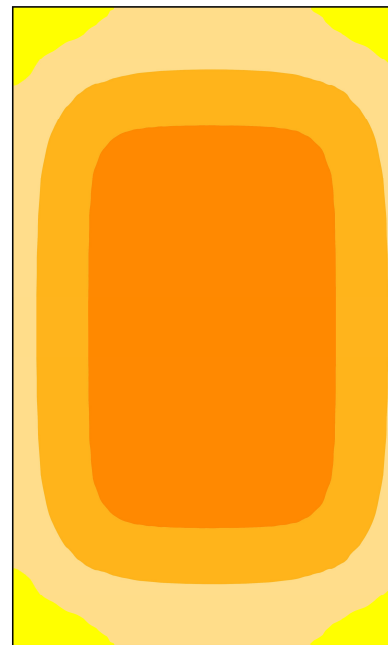
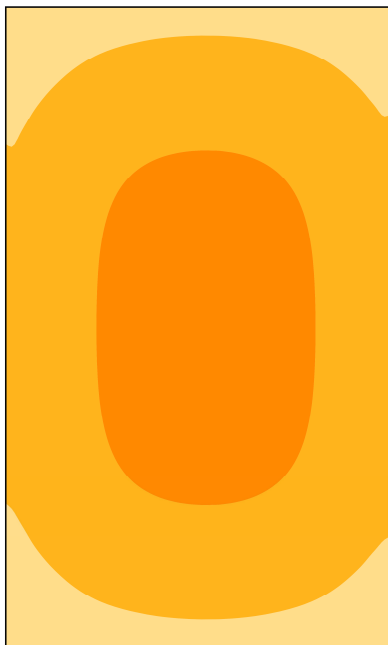
12"

Coverage: 10' X 6' – PEAK  $\frac{\mu mol}{m^2 \cdot s}$   
 >360 (8 Tube)  
 >270 (6 Tube)  
 >180 (4 Tube)

Coverage: 10' X 6' – PEAK  $\frac{\mu mol}{m^2 \cdot s}$   
 > 440 (8 Tube)  
 >330 (6 Tube)  
 >220 (4 Tube)

Fixture: 8' X 4' - AVG  $\frac{\mu mol}{m^2 \cdot s}$   
 >220 (8 Tube)  
 >180 (6 Tube)  
 >120 (4 Tube)

Fixture: 8' X 4' - AVG  $\frac{\mu mol}{m^2 \cdot s}$   
 >300 (8 Tube)  
 >230 (6 Tube)  
 >150 (4 Tube)



Philadelphia Headquarters: 487 Devon Park Drive, Suite 204, Wayne, PA 19087

[www.IndependenceLED.com](http://www.IndependenceLED.com) (484) 588-5401

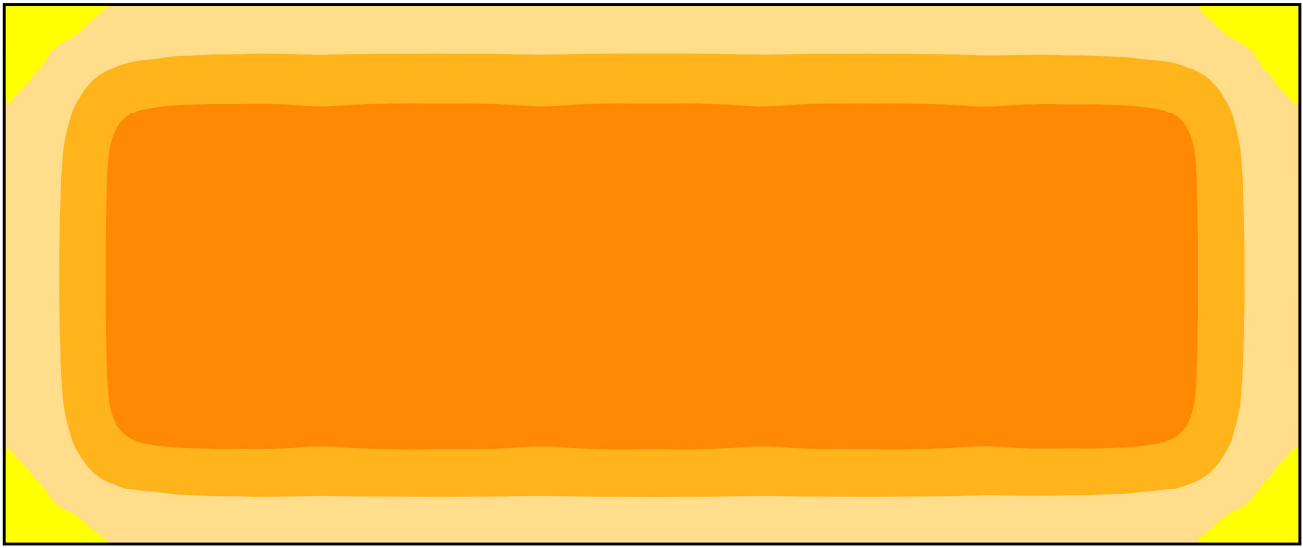
4.11.2017

# LED GROW RACK SERIES - VEG

5X Racks – GR 600-V 12" from Canopy

Canopy: 10' X 24' – PEAK  $>340 \frac{\mu\text{mol}}{\text{m}^2 \cdot \text{s}}$

Fixture: 8' X 20' - AVG  $>275 \frac{\mu\text{mol}}{\text{m}^2 \cdot \text{s}}$



## Mechanical Dimensions

