

STAIRWELL AND PASSAGEWAY FIXTURE

THE HIGH PERFORMANCE

*LED Luminaire Series for
Stairwells, Bathrooms,
Passageways, and
General Illumination*



KEY FEATURES INCLUDE:



Multiple Color Options

Three color options ensure that the new lighting will match your current aesthetics, and allows for custom color options



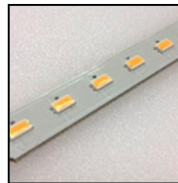
10 Year Warranty⁸

Industry Leading 10 Year Warranty on all LED Engines and external drivers.



Manufactured in America

With domestic and imported components. Factory: Southeastern PA. Higher quality control, faster delivery times, and new domestic job creation.



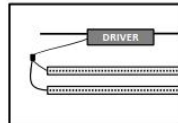
Long Lasting LED Chips

L₉₀ in excess of 100kHrs



High Color Rendering

Colors are enhanced due to the use of LEDs selected directly on the black body curve.



Independent Class II Driver

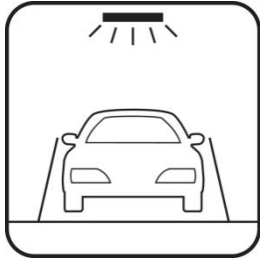
Safety, improved thermal management, and extended lifetime are gained by locating the driver remote from the LEDs.



LED Lighting | Forged in America™

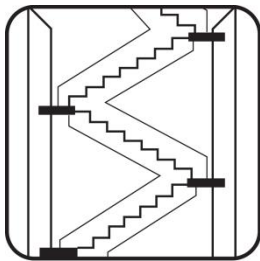
STAIRWELL AND PASSAGEWAY FIXTURE

24/7 APPLICATIONS



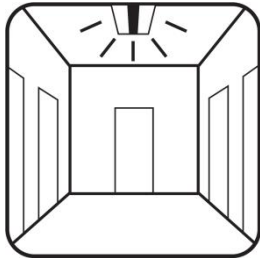
PARKING

Structures, surface and underground garages



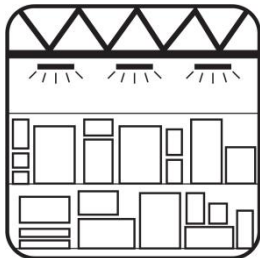
STAIRWELL

24/7 fire stairs for any property type



HALLWAY

Hotels, hospitals, multi-family & dorms



INDUSTRIAL HIGH BAYS

Factories, warehouses & distribution centers



STAIRWELL AND PASSAGEWAY FIXTURE

Specification Table	
Environmental	Dry or damp locations only IP2X per EN60529
Ambient Operation Storage	-25°F to 140°F/(-31°C to 60°C) ^{6,7} 25°F to +185°F/(-31°C to +85°C) ⁶
Wattage	See table below ¹²
Input Voltage (nominal)	100-277VAC 50/60Hz .4-.15A +24VDC (0.3-1.0A)
Power Factor (PF)	>0.9
Total Harmonic Distortion (ATHD)	<20%
Life Time LED per TM-21	Calculated L ₇₀ (10k) = 398kHrs ¹⁶ Calculated L ₉₀ (10k) = 102kHrs Reported L ₇₀ (10k) >60kHrs >100khrs, Full load, 25°C
LED Driver	MTBF ² - >200kHrs 120VAC, 80% load, 25°C Lifetime - >56kHrs 120VAC, 80% load, 60°C
LM80 Data	NVLap Accreditation
LED Type	SMD 5630
Efficiency	>125lm/W ¹² (See table below)
Lens Material	Acrylic ¹⁵
Certifications	UL, FCC, DLC
Warranty ¹⁷	LED Driver - 10 years LED - 10 years Fixture - 10 years
Dimming	0-10V - <20-100% Electronic Low Voltage (ELV) ¹¹
Off State Power Consumption	0 Watts
On State	Instantaneous

LENGTH OPTIONS:

2' & 4' - standard
OUTPUT WATTAGE

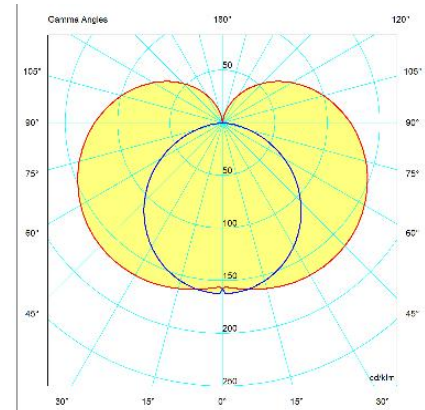
(See table below)

COLOR OPTIONS:

2700K, 3000K,
3500K, 4000K & 5000K
standard⁵

COLOR RENDERING INDEX (CRI) 85 standard

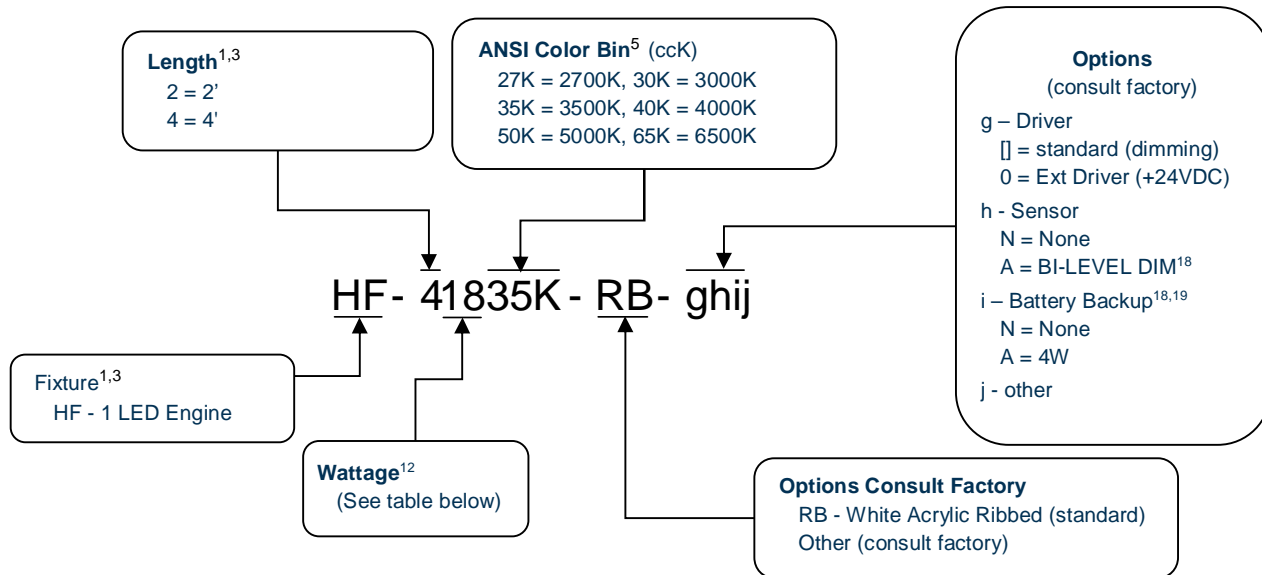
DIMMING - standard




Package Information	
Standard Package	Case
Quantity	2 Unit
Sales Units	1 Unit
Package Items	2 Unit Complete
Weight lbs(kg)	18 (8)



STAIRWELL AND PASSAGEWAY FIXTURE



Most Popular: HF-20940K-RB-BA HF-20940K-RB-BAA	HF-41335K-RB-BA HF-41335K-RB-BAA	HF-40935K-RB-BA HF-40935K-RB-BAA
--	-------------------------------------	-------------------------------------

 Click Here	HF-20927K-RB	HF-40927K-RB	HF-41327K-RB
	HF-20930K-RB	HF-40930K-RB	HF-41330K-RB
	HF-20935K-RB	HF-40935K-RB	HF-41335K-RB
	HF-20940K-RB	HF-40940K-RB	HF-41340K-RB
	HF-20950K-RB	HF-40950K-RB	HF-41350K-RB

Length (ft)	Wattage ¹² (nominal)	Lumens ^{1,12} @ 5000K (-12%/ to 2700K)
2	09	1250
	14	1775
2 (+24VDC)	12	1525
4	09	1250
	13	1775
	18	2375
	28	3650
4 (+24VDC)	24	3050



Notes

1. Not all model combinations are available
2. MBTF per MIL-HDBK-217F
3. Extended lead times and minimums maybe required for some models
4. N/A
5. Other ANSI Color bins available
6. Operation to -40°F/-40°C is available
7. Some low wattage models -4°F to +140°F/(-20°C to 60°C), consult factory.
8. Extended warranties are available. 5yr warranty products available.
9. N/A
10. Specifications and availability subject to change without notice
11. Some models can use ELV Dimming with a special order, consult factory
12. Varies depending on color temperature, CRI, LED driver and lens (±10%)
13. Patent Pending: USA +40 Countries
14. EPC Act -179d tax incentive ready product given dimming bi-level switching requirements
15. Certain chemicals that may exist in end-user locations release airborne contaminants that can impact the integrity and safety of key fixture components that contain acrylic or polycarbonate material.
16. Worst case temperature @25°C.
17. Consult website for further details.
18. Conforms to basis of NFPA 101, ICB 1006, NYC BC 1006 when used with bi-level control and/or battery backup. Please consult factory for proper specification and installation. IndependenceLED is not responsible for improper installation, maintenance, and/or specification.
19. Conforms to basis of BNY Title 27/Sub-chapter 6 [C26-605.1] 27-381 when HF series specified with 150mA cable and 4 watt battery backup, when battery is charged for no less than 48hrs, emergency illumination will be greater than 120 minutes. IndependenceLED is not responsible for improper installation, maintenance, and/or specification.

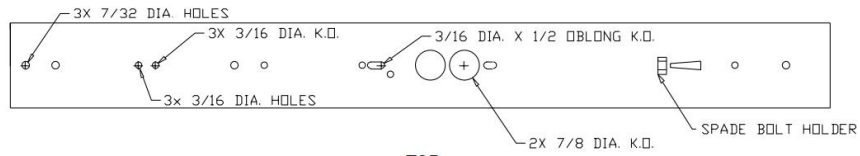
Compliance Standards

- UL 1993 - Self-Ballasted Lamps and Lamp Adapters, Ed. 4: 2012
- UL 1598 - Luminaires
- UL 1598C - Light-Emitting Diode (LED) Retrofit Luminaire Conversion Kits
- UL 8750 - Standard for Light Emitting Diode (LED) Equipment for Use in Lighting Products, Ed. 1: 2009
- CSA C22.2 No. 250.13 - Light emitting diode (LED) equipment for lighting applications, Ed. 12/2012
- EN 62031:2008 - LED modules for general lighting. Safety specifications
- EN 61347-1:2008 - Lamp controlgear. General and safety requirements
- EN 55015:2006 - Limits and methods of measurement of radio disturbance characteristics of electrical lighting and similar equipment
- EN 61347-2-13:2006 - Lamp controlgear. Particular requirements for d.c. or a.c. supplied electronic control gear for LED modules
- EN 61000-3-2:2006 - Electromagnetic compatibility (EMC). Limits. Limits for harmonic current emissions
- EN 61000-3-3:2008 - Electromagnetic compatibility (EMC). Limits. Limitation of voltage changes, voltage fluctuations and flicker in public low-voltage supply systems
- EN 61547:2009 - Equipment for general lighting purposes. EMC immunity requirements
- FCC Part 15, Subpart B, Class B -
- ANSI/ANSI G C78.81-2010 - Electric Lamps-Double-Capped Fluorescent Lamps-Dimensional and Electrical Characteristics
- ANSI/NEMA/ANSI G C78.377-2008 - American National Standard for Specifications for the Chromaticity of Solid State Lighting (SSL) Products
- IEC 60529-2004 - Degrees of Protection Provided by Enclosures (IP Code)
- DOH Article 81.19 (b) - Lighting and ventilation
- FDA Article 6-202.11 - Light Bulbs, Protective Shielding

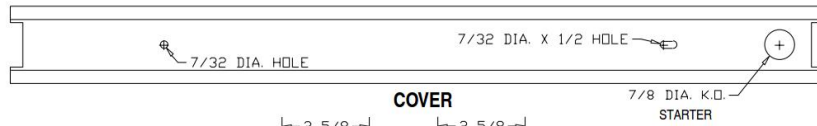


STAIRWELL AND PASSAGEWAY FIXTURE

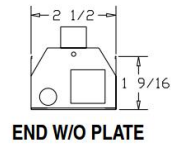
Fixture Specification



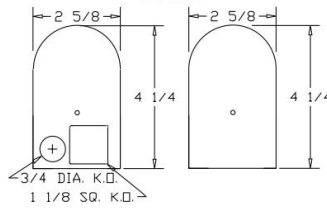
**TOP
W/O DIFFUSER**



COVER

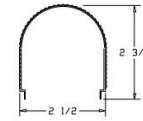


END W/O PLATE



END PLATE

STANDARD PAIR IS ONE PLAIN
AND ONE WITH KOS



**DIFFUSER
RIBBED**

Length (ft)	
2	24¼
4	48¼

