

Queen Conch Dissection



Tom Smoyer, HBOI

Cracking the Conch



First, a hammer is used to “crack” a hole in the top of the shell.

Then a screwdriver or a knife is inserted through the hole to cut away the muscle from the shell.

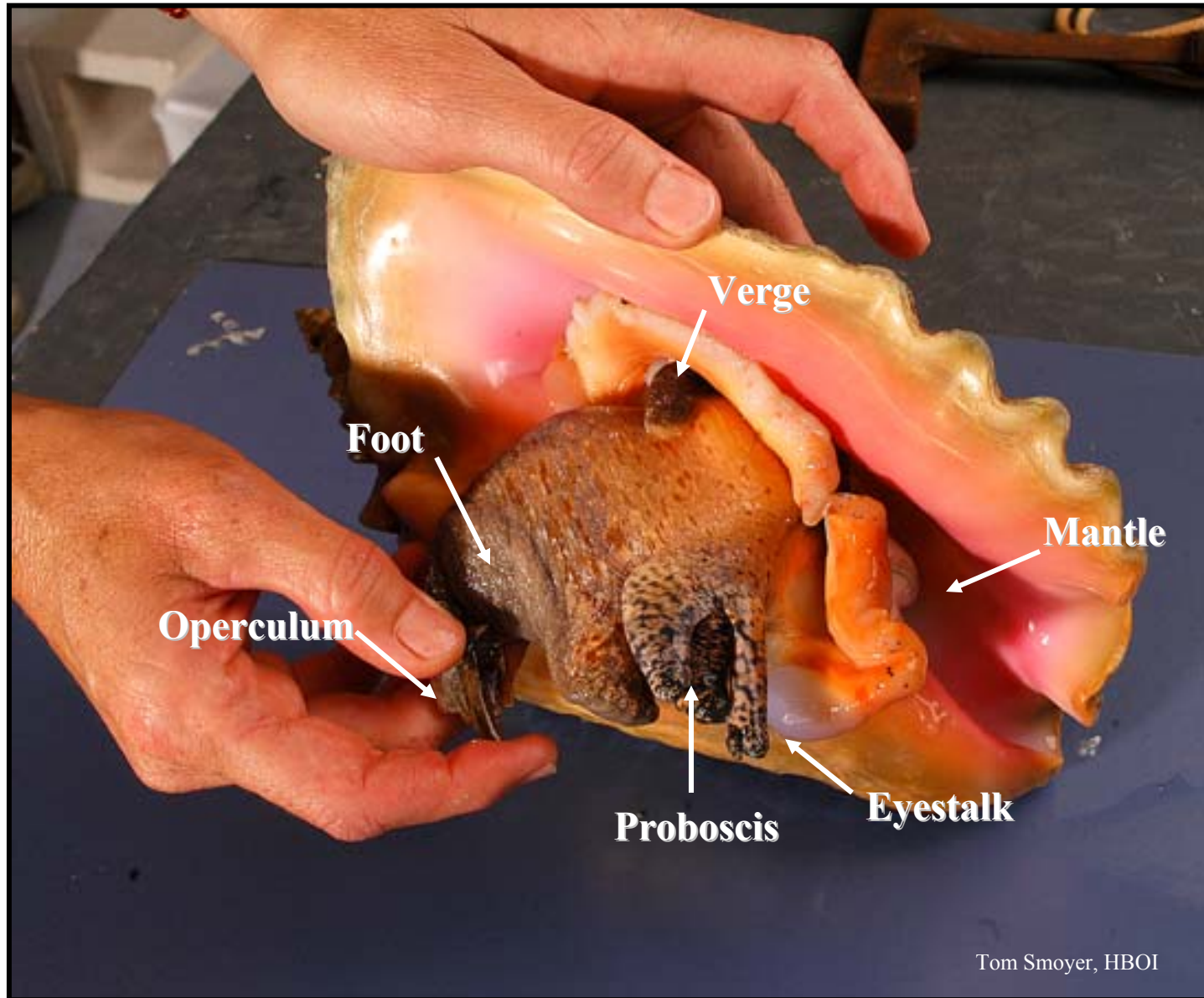


Removing From Shell



Once the muscle is detached, the conch can slowly be pulled from the shell.

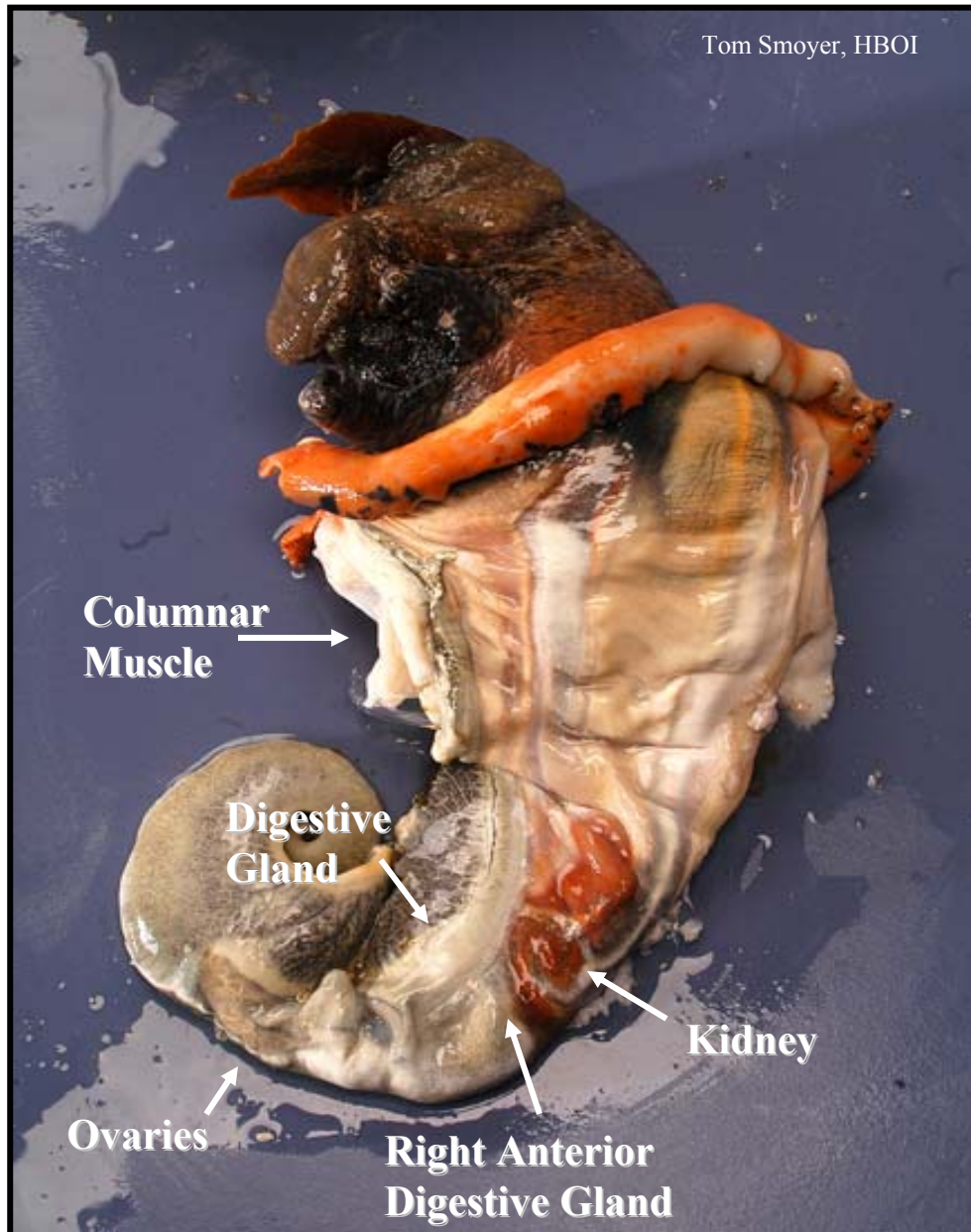
External Anatomy



Sexual Differentiation



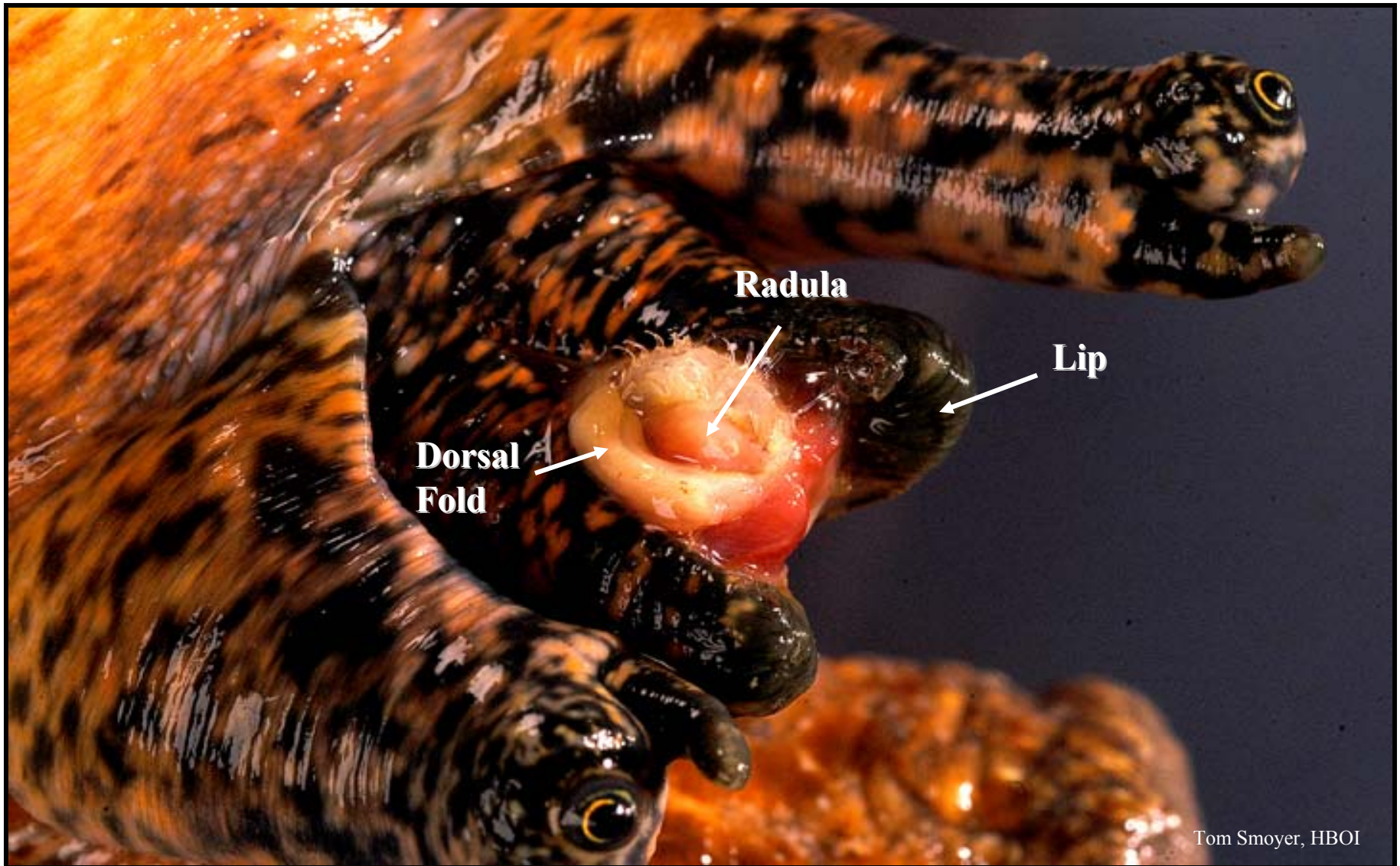
Left Side Anatomy (Female)



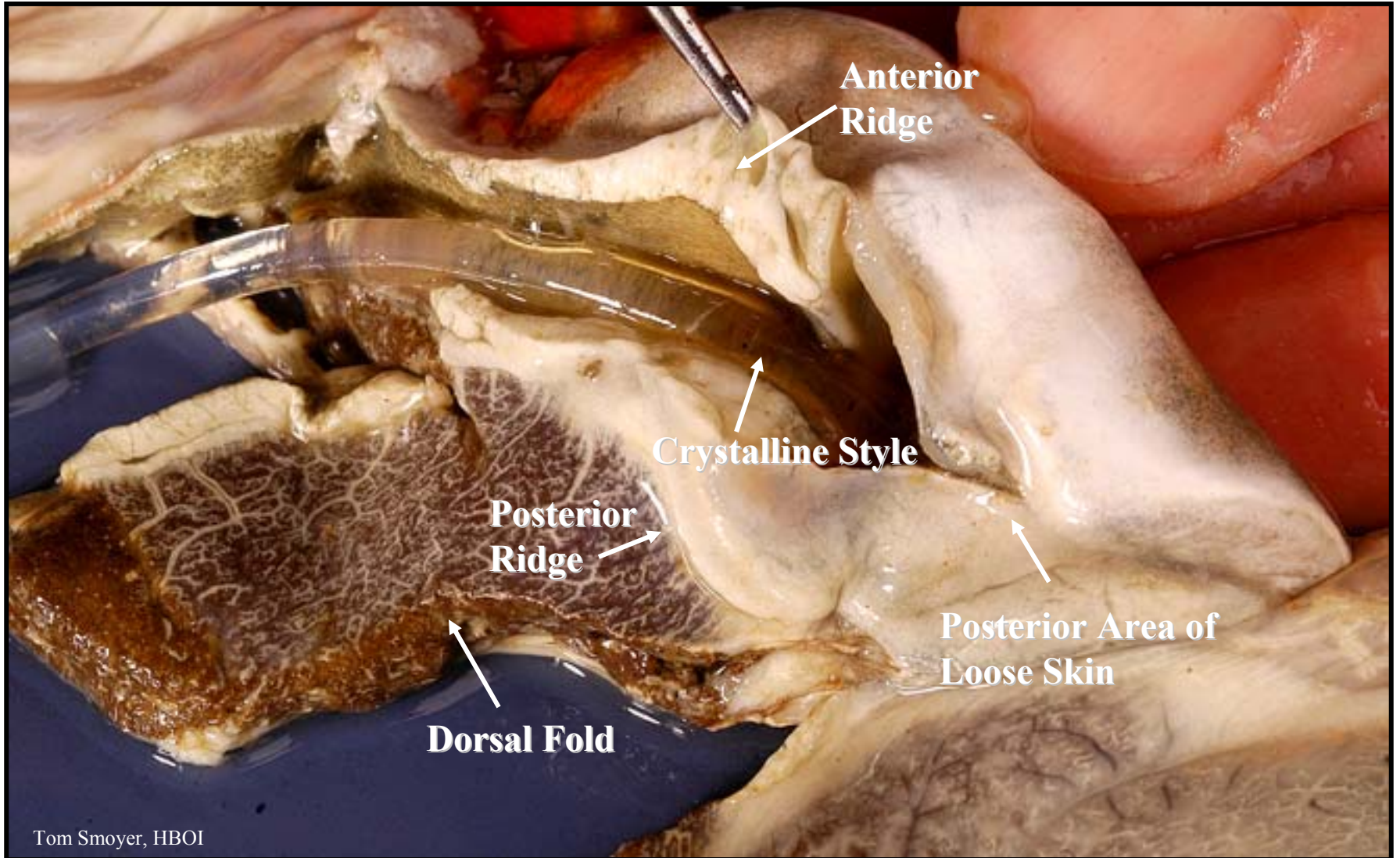
Right Side Anatomy (Male)



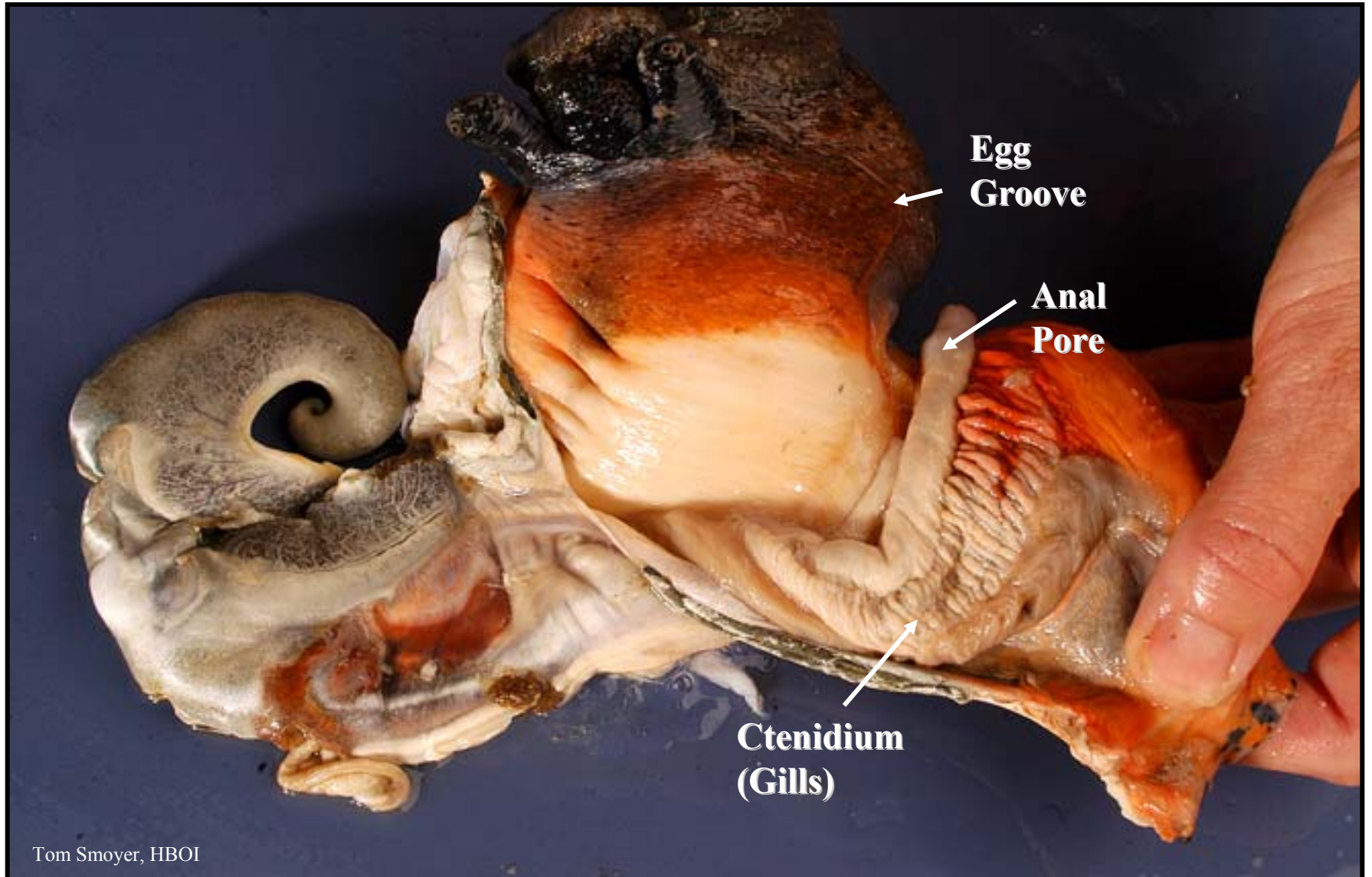
End of Snout



Stomach



View of Ctenidium



End Products

