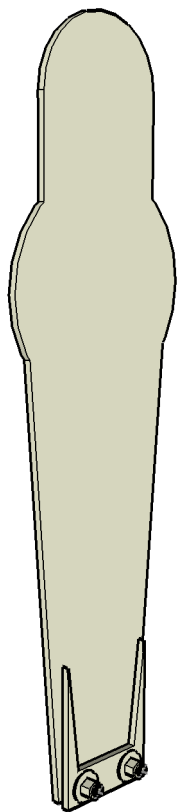


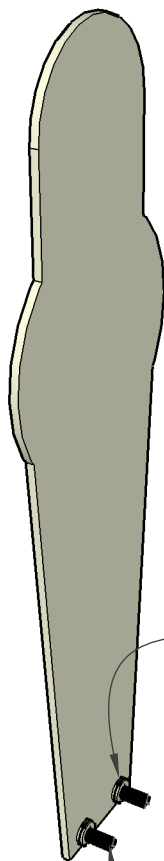
Your target is almost ready for use, please read below!

For safe shipping the stake plate on your SNP-1 has been reversed. You will need to unbolt it, turn it, and re-tighten the nuts.

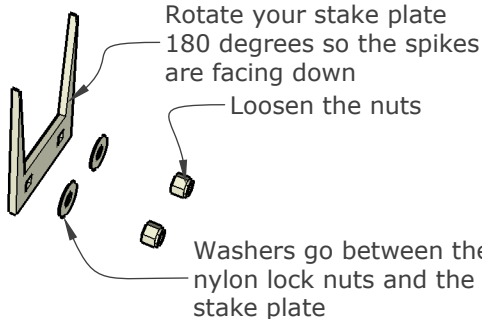


This is how it should have arrived to your door

These are ultra hard Grade 9 carriage bolts. They have a square shaft that prevents them from spinning when inserted into the shooting surface. You shouldn't need to hold them with a wrench or pliers!



Leave the rubber grommets where they are. These increase the audio feedback when you hit the target!



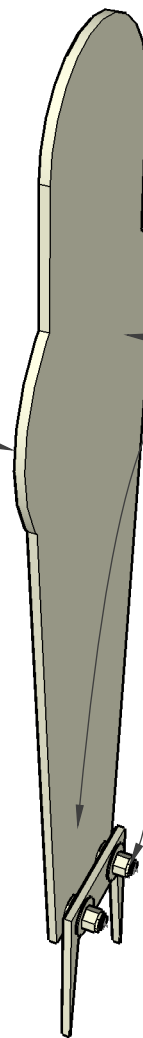
Rotate your stake plate 180 degrees so the spikes are facing down

Loosen the nuts

Washers go between the nylon lock nuts and the stake plate

Both the shooting surface and the stake plate are cut from AR-550 Steel Plate. This steel is harder than many high end pocket knives. Do not attempt to drill or cut this plate, it will destroy your bits and blades. If one side of your target ever becomes pitted or curved simply rotate the shooting surface!

Shoot target this direction!



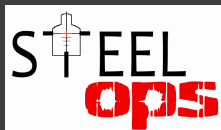
If you have any questions please call our 24hr customer service hotline! 970-566-2454

Back face of target. Never shoot the target this direction. Bullet fragments can ricochet off the stake plate and damage the grommets & hardware.

Tighten nuts so that the rubber grommet is slightly compressed. You'll notice a groove around the edge of the grommet, when the rubber is compressed enough to close than groove its tight enough. Don't over tighten the nuts or you'll lose audio feedback and your target won't move as much when hit

To install the target simply jam the spikes into firm soil or dirt. If needed you can hammer the top of the stake plate with a mallet without any risk of damaging the plate.

Have you checked out our target spray paint templates?! They're a great way to add additional capability to your target! Visit the web store and look under "target accessories"



SNP-1 User Manual

Set-Up Instructions