

# FR 90 Min SK SINGLE & PAIRS

## FD-90PP-5 BONDED

TECHNICAL SHEET

**vicaima**  
UNEXPECTED HARMONY

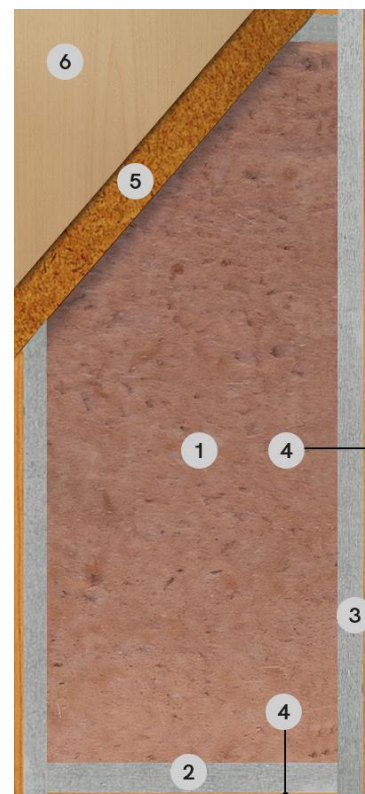
<b>CORE</b>	Mineral core
<b>STILES</b>	Composite mineral rails and stiles
<b>THICKNESS</b>	Nominal 1-3/4"
<b>SLAB SIZE</b>	Single swing up to 3'6" wide x 8'0" high [1067 x 2438 mm] Standard pairs up to 7'0" wide x 8'0" high [2134 x 2438 mm]
<b>TESTED</b>	Fire testing, evaluation and inspection according to UL 10b, UL 10c, NFPA 252, and CAN / ULC S104 (R2015). Approved for Positive and Neutral pressure regimes. Temperature Rise 250°F at 30 Min. Door preparations in accordance with NFPA 80. Category B - Additional edge sealing required.
<b>BLOCKING OPTIONS</b>	The use of additional blocking may be necessary to suit particular applications and / or to install face mounted hardware with screw fixings. Lock blocking - 254mm high x 127 width [10" x 5"] (blocking not required unless the hardware manufacturer specifies blocking) Top / Bottom blocking - 101mm [4"] high x door width. Middle blocking - 127mm [5"] high x door width
<b>FINISHES</b>	Naturdor® - Real wood veneer Naturdor® - Stained - Real wood veneer stained Paintable Finishes - Birch stain grade   White Primed
<b>FRAME OPTIONS</b>	Category C – Standard/Proprietary, metal or mineral frame. Category H – Smoke & Draft Control Gasket
<b>GLAZING OPTIONS</b>	Listed vision frames and listed glazing or listed and labelled glazing kits for use in mineral core doors. Both the listing limitations of the glazing kit and the limitations of the door construction listed below must be respected Maximum Clear Glazing Area: 100 sq. in. [0.065m <sup>2</sup> ]. Minimum distance between the nearest sight line of the aperture cut out and the edge of the door or any mortise/machining: 5-1/2" [140mm]
<b>CUSTOMIZE YOUR DOOR</b>	All hardware must be NFPA 80 compliant and listed for use with mineral core door constructions Surface mounted hardware installed with thru-bolt fixings do not require additional blocking Installation with screw fixings requires additional blocking Surface-mounted or concealed door bottoms (dropseals) Kick plates and protection plates may be applied Molding as a plant-on may be applied to one or both faces of the door



**FR 90**



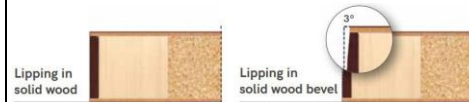
**STC32**



### KEY

- 1 - Mineral core
- 2 - Composite mineral rails
- 3 - Composite mineral stiles
- 4 - Perimetral Lipping
- 5 - Hardboard
- 6 - Door finish

### EDGE BANDED OPTIONS



### ENVIRONMENTAL BENEFITS

Recycled content, all series  
FSC Certified wood



### FIRE CERTIFICATION



Note: Depending on product features or configurations, dimensions will vary. As we are constantly improving our product range, we reserve the right to make changes without prior notice. The guarantee certificate is an integral part of the technical data sheet, available at [www.vicaima.com](http://www.vicaima.com)