

Going to Pieces Quilt Co

Quarter 3

July-September, 2025



Quilters never grow old, they just go to pieces!



Happy Place-53 x 71
Kits Available



Rendezvous-60 x 72
Kits Available



Riviera Bleu-78 x 84
Kits Available

Above are some of our newest quilts in the shop. Our staff is always busy making more samples, often with our newest lines of fabric. Please take time to enjoy them when you visit. There are also kits available for our samples, making your quilting life easier!

Notes

When Going to Pieces Quilt Co first opened it's doors in January, 2011, our dream was to create a friendly, organized shop for all your sewing and quilting needs, complete with perks and the occasional sale. Our "punch card" system was one such perk; however, due to increasing prices that we cannot control, we can no longer offer this perk. August 1, 2025, will be the last day to cash in any filled cards you may have. This was a difficult but necessary decision. We hope you understand.

Mary & Joanne

YOUR INSPIRATION DESTINATION QUILT SHOP



5000+ bolts of traditional
to bright fabrics!
1000+ patterns!
Notions! Classes! Ideas!
250+ Samples!

SHOP HOURS

| | |
|-------------------|-----------|
| Sunday (Oct-Apr) | 12-3:00 |
| Sunday (May-Sept) | Closed |
| Monday | 9:00-5:30 |
| Tuesday | 9:00-5:30 |
| Wednesday | 9:00-5:30 |
| Thursday | 9:00-5:30 |
| Friday | 9:00-5:30 |
| Saturday | 9:00-3:00 |

E-mail:

Goingtopiecesquiltcompany
@yahoo.com

Website:

goingtopiecesquiltco.com



FACEBOOK:

Like & follow us on Facebook!

Instagram:

Like & follow us on Instagram!

1017 W Northland Ave, Suite A ~ Appleton, WI 54914 ~ 920-882-6430

Our 15th Annual . . .



Visit all FIVE shops to win!

PRIZES:

Grand Prize \$125 in gift cards, 5- \$50 cards and 5- \$25 cards

Time to check out new Christmas fabric, new holiday samples and kits, and so many ideas! Join us for specials, treats, door prizes and sales!!

Appleton

Going to Pieces Quilt Co

Sew 'n Sew

DePere

KK Sew and Vac

Green Bay

Quilting Divas

Larsen

Primitive Gatherings



We will again be **OPEN**
on Sundays, beginning
Sunday, October 5th
from noon until 3:00

Christmas in July



CUSTOMER APPRECIATION DAY!!

Friday, Sept 19, 2025 – 11:00 until 1:00

Together with our neighbor, **THE QUILTING CONNECTION,
we invite you to join us for a BBQ Party for YOU,
our LOYAL CUSTOMERS,
as a **THANK YOU** for your continued support.**

**Chef Jeff will do the honors at the grill
and WHBY will be broadcasting on site.
Meals will be served in the classroom,
with great sales, awesome specials,
door prizes, and treats in the shops.**

**This is a fun day for all! Please join us.....
Mary, Joanne, Angie & Staff**

Classes

Autumn Harvest Panel Play

Monday, September 29 5-8:00 pm

Join Mary and bring the beauty and warmth of the harvest season into your home with the Autumn Harvest Panel Play Quilt Pattern by All Through the Night. This charming design showcases the stunning, nature-inspired panel from the Autumn Harvest Flannel Collection, making it a perfect addition to your fall decor. Ideal for cozying up on chilly autumn nights, this quilt pattern is both practical and decorative. The set also includes two bonus patterns for a coordinating table runner and decorative pillow, allowing you to create a complete seasonal look for your home. Whether you're crafting a quilt, enhancing your fall decor, or creating handmade gifts, this pattern offers endless possibilities for celebrating autumn in style.

If needed, students can work on this project on Mondays or Wednesdays when Mary is working so she can help if needed.

Class: \$25.00



Turning Twenty

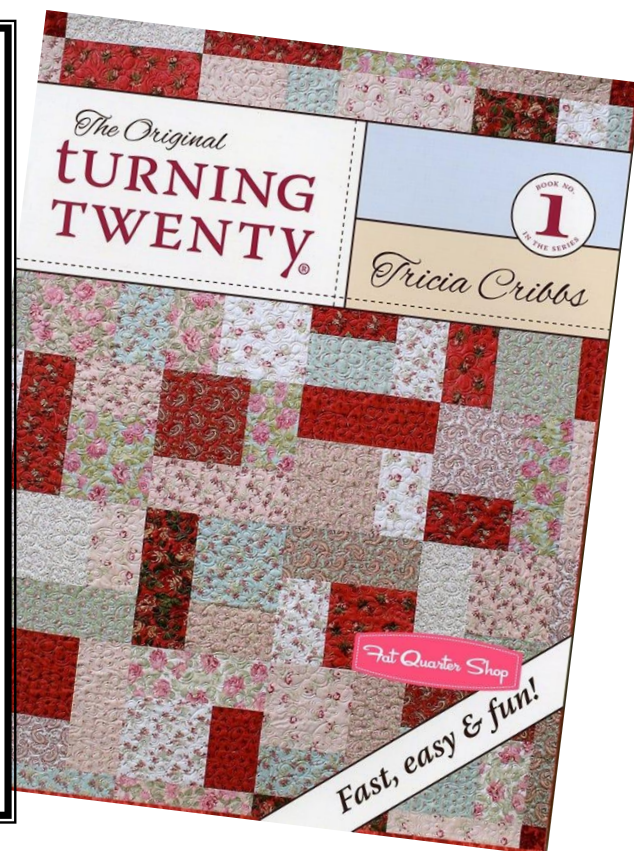
***FOUR Wednesday evenings from 5:00-8:00 pm
September 17, 24 and October 1, 8***

A great quilting class for beginners!

Turning Twenty quilt patterns are a quilter's dream come true! The clever designs make the most of your fabric using a unique method that requires just 20 fat quarters – and you won't have any leftover pieces! It's a super-efficient way to create a stunning quilt with minimal waste.

Join Mary and expect a fun and satisfying sewing experience with simple cuts and straightforward piecing, perfect for beginners and experienced quilters. The finished quilt is a beautiful showcase of your favorite fabrics, with a playful mix of colors and patterns that will brighten any room. You can make a twin or full size!

Class: \$60.00



Classes

Textured Landscape “Painting” With Fabric

Join Kathy Keene and learn how to create these beautiful landscape “painting” using a variety of fabrics. No sewing is involved. Your finished product will look like a watercolor painting! These classes are nature inspired and will be a favorite art piece of yours for many years. Samples on the left are also on display in the shop. Class size is limited so sign up early. Specifics follow:



“Fall Landscape”

Saturday & Sunday, September 20 & 21

9:00 until 4:00 each day

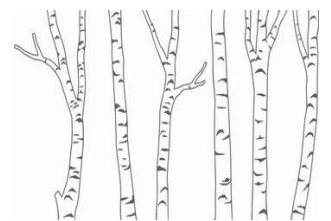
Class is \$125 (kit is provided)

“Moonlight on the Birches”

Saturday, October 18

9:00 until 4:00

Class is \$110 (kit is provided)



Side Hustle

Monday, July 28 9:30 am until finished

Tired of bulky purses or overstuffed pockets? Meet *Side Hustle*! This versatile and comfortable crossbody sling bag is perfect for your on-the-go lifestyle. Designed to fit close to your body, it offers secure and easy access to essentials, whether you're hiking, shopping, or traveling. Its sleek profile even allows you to wear it under a jacket. With three zippered compartments, *Side Hustle* keeps your wallet, phone, passport, and other personal items organized and secure. Wear it crossbody, on your back, or around your waist for total hands-free convenience. Plus, customize with two strap styles and choose from two sizes—small or standard—to suit your needs. Join Marsha and make yours now!

Class: \$65.00



Classes

Wool Hand Applique Class

Thursdays, September 11 & 25 5:30 – 8:00 pm

"Fall Fling" by Granny's Legacy (7.75 x 10") **Kit: \$29.00**

"Pennilyn" by Granny's Legacy (8 x 13") **Kit: \$36.95**

You can choose either of these patterns for your wool hand applique experience with Kim! "Fall Fling" is better suited for beginners and "Pennilyn" is better suited for those who know wool applique basics.

PROJECT KIT: Includes pattern, background wool, artisan dyed wools, and woven cotton backing fabric to complete one project. Not included but available at the shop are your threads.

If you have never worked with gorgeous wool and hand stitching, this class is for you. If you need some refreshing or just want to join in the fun, this class is for you, as well. In this 2 evening class, you will learn how to hand applique on wool. Kim will teach you several different stitches as you complete either (or both) of these wonderful pieces. This skill can go anywhere with you!

Class: \$20.00



Two Big Totes

Saturday, August 2 9:00 am until finished



Need a tote for the beach, your next sewing retreat, or the grocery store? This versatile tote is perfect for everything! The wide openings of these totes make it easy to pack and access your essentials, while a variety of slip and zippered pockets inside and out keep your items organized. The sturdy, over-the-shoulder handles provide comfortable carrying, and the reinforced base offers added durability for heavy loads.

The easy-to-install zipper closure keeps contents secure, and when opened, it falls flat against the tote for full access to the interior.

Join Sue for a day of fun tote making!

Class: \$65.00



Mondo Bag

Wednesday, August 6 & 13 4-8:00 pm

This is a TWO DAY Class

These bags are really fun to make. You can choose the size you want and the fabric you love. Join Joanne and learn how the Quiltsmart system of piecing makes a perfect bag, every single time! The intersections match up perfectly. You will want to make several as these bags make excellent gifts!

NOTE: There is homework prior to class.

Class: \$40.00 Pattern & Kit must be purchased



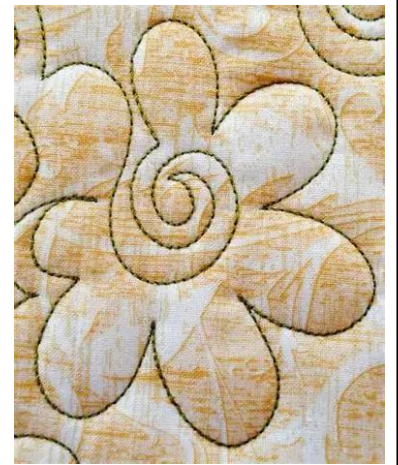
Beginning Free Motion Quilting Class

Wednesday, September 10 4-8:00 pm

Free Motion Quilting! This is a skill that takes lots of practice but it finished your quilt and holds it all together. Aside from the practical side, it can also enhance your beautiful quilt, table runner, etc.

Join Joanne and learn free motion quilting techniques. In class you will be given a practice panel with batting and backing. This skill is a must for all quilters. Supply list given upon sign up.

Class: \$45.00 includes kit



America the Beautiful

This is a Machine Embroidery Class

July 16 9-2:00 pm

Spruce up your summer season with the America the Beautiful small project collection using Lori Holt's 2025 Americana fabric collection or Lori Holt & RBD Basics. Pillows, a table runner, door banner, wreath, and 3D In-The-Hoop centerpiece, make this collection the perfect July 4th decorative bundle. ITH piecing and applique, along with free standing applique techniques combine with Bee in my Bonnet's exclusive cover stitching for a unique finish.

Join Ann and create some Americana beauty for your home! Ann will schedule more classes if needed.

Kits are available prior to class.

Class: \$5.00 a session

Autumn Love Quilt

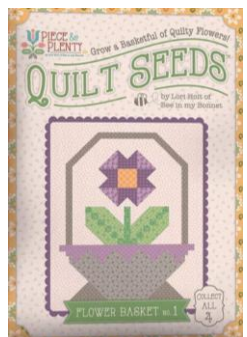
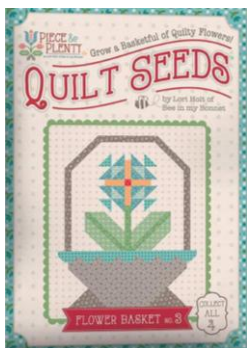
This is a Machine Embroidery Class

Wednesday, July 23

Join Ann and work on this GORGEOUS machine embroidered quilt by Riley Blake, using fabrics from the Riley Blake collection. Ann will be adding additional classes as needed.

Kits are available prior to class.

Class: \$5.00 a session



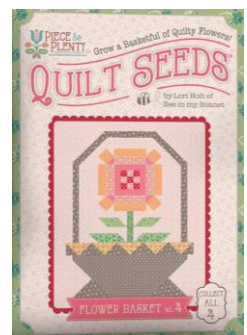
QUILT SEEDS KITS!

The Piece & Plenty Quilt Seeds Patterns by Lori Holt of *Bee in My Bonnet* is a pattern series of 4 different basket quilt blocks filed with bright flowers.

Each seed packet/kit has instructions to make 1 block. A paper pattern is included in each packet/kit, along with the fabric. No templates are required. Each block finishes at 24" x 30" and uses traditional piecing techniques.

Collect all 4 of these beautiful seed packets in their keepsake packaging. Optional quilt finishing instructions will be included in each packet/kit. Seed packet size is approximately 6 1/2" x 9 1/2".

Watch for kits and samples in our shop!



New Fabrics!!



Autumn Woods

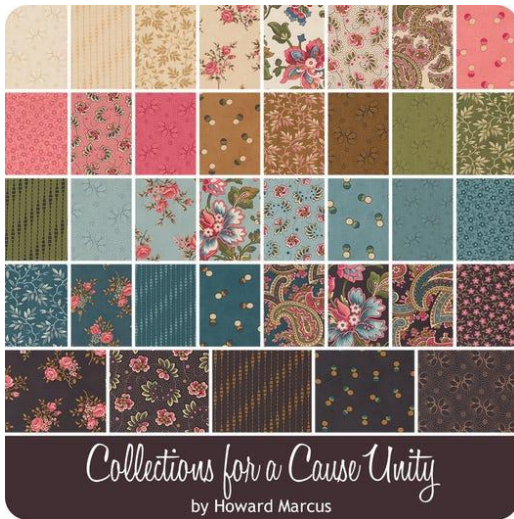


Lavendar Fields

Ghoul Friends Boxed Quilt Kit



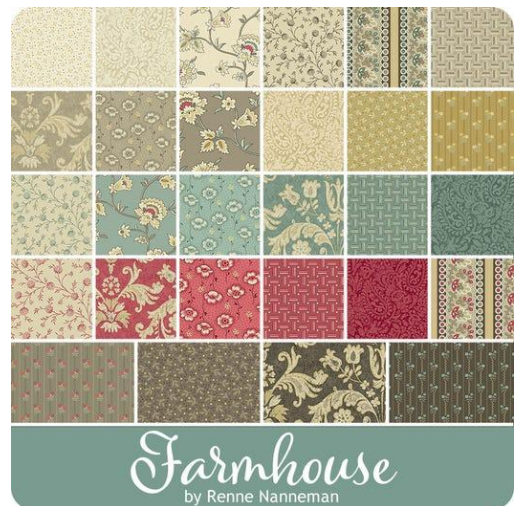
Ghoul Friends



Unity



FIGO Pop Sugar



Farmhouse



Americana Riley Blake



Autumn



Pumpkin Spice

New Fabrics!!



Home Sweet Haunt



Holly Jolly Flannel



Santa's Tree Farm
Boxed Kit



How the Grinch Stole Christmas fabrics



Floral Reflections

UFO CLUB

Tackle that quilting bucket list! This club meets the first Tues of the month. A \$5 membership fee gets you started.

Each month, members hand in a list of projects they hope to accomplish. Completed projects are brought in the next month for show and tell. If you didn't finish, you pay \$5 per unfinished project to the kitty. All money in the kitty will be turned into gift cards to be given to winners drawn at the Oct meeting. JOIN US!!

July 1 - August 5 – September 2

OPEN SEW TUESDAY

9:00 until 4:30 pm

We will host OPEN SEW TUESDAYS for those that need to get projects done, those that have other projects, and those who just like to sew and meet new friends.

*July 1 & 15
August 5 & 19
September 2 & 16*

OPEN SEW
Monday – Wednesday, Friday
9:00 until 4:30 pm

**NOTE: PLEASE CHECK CALENDAR
FOR VERIFICATION because we have
taken some days for classes.**

THIMBLE THURSDAY

Grab your hand projects ... then head on over for a day of sewing, friendship and LOTS of laughs! You never know what tips you are going to pick up and what projects you just may complete.



This is a popular event with embroidery and handwork groups, so come see what all the excitement is about! The ladies are at the shop from noon until 4:00 every Thursday.

Clubs

*Thank you
for following
Club and
Class rules:*



~ Masks are not required; however, if you are autoimmune compromised, you may want to wear a mask.
~ If you are feeling under the weather, please stay home.

CLASS POLICIES:

*All classes must be paid for
at the time of sign up.*

Should you decide to cancel before the class, you will receive an in-store credit. If the class is cancelled due to low attendance, you will receive your choice of either an in-store credit or full refund.

We try to never cancel a class but sometimes this is beyond our control. *Thank you for your understanding!*

RED BAG SATURDAY

*On the third Saturday of each month, it's "Red Bag Saturday" at our shop. On these Saturdays, surprise discounts will be announced. If you have a GOING TO PIECES REUSABLE RED BAG you are eligible for the discount!
Get yours today! \$3.95*



Project ♥ Linus

Going to Pieces Quilt Co is an official drop off site for Project Linus, a wonderful organization that supplies community services (police, fire, etc) with security quilts/blankets for those who need a hug in time of need.

Please do not drop off items when the shop is closed.
Thank you for your donations!

THERE ARE PEOPLE IN THIS
WORLD WHO MAKE
THINGS BETTER WHEREVER
THEY GO.

Thank You


TO ALL OF OUR
CUSTOMERS WHO TAKE
PART IN OUR EVENTS,
SHOW UP EVERY DAY AND
CONTINUE TO SUPPORT US
WHILE MAKING US
BETTER EVERY YEAR!

MAY FLOWERS EVENT WINNERS



Mary Gospodarek - \$25.00

Cindy Loberg - \$35.00

Janice Mackmiller - \$35.00

Kathy Orth - \$50.00

Kay Page - \$25.00



APRIL SHOWERS EVENT WINNERS



Jane Blickhan - \$35.00

Debra Breuninger - \$35.00

Kathy Hecker - \$50.00

Marge Schaser - \$25.00

Sally Timm - \$25.00



*Welcome
To
Table
Runner
ALLEY!*





July 2025



| Sunday | Monday | Tuesday | Wednesday | Thursday | Friday | Saturday |
|--------------------------------|--|--|---|---------------------|--|---|
| | | 1 Open Sew ~UFO Club 10-11:00 am | 2 Open Sew | 3 Thimble Thurs | 4 Closed  | 5 |
| 6 CLOSED | 7 Open Sew | 8 | 9 Open Sew | 10 Thimble Thurs | 11 Open Sew | 12 |
| 13 CLOSED | 14 Open Sew | 15 Open Sew | 16 No Open Sew ~America the Beautiful Mach Emb Class 9-2 | 17 Thimble Thurs | 18 Open Sew | 19 RED BAG SATURDAY |
| 20 CLOSED | 21 Open Sew  | 22 | 23 No Open Sew ~Autumn Love Quilt Mach Emb Class 9-2 | 24 Thimble Thurs | 25 Open Sew | 26  |
| Annual Christmas in July event | | | | | | |
| 27 CLOSED | 28 Open Sew ~Side Hustle Bag Class 9:30 until finished | 29 | 30 Open Sew | 31 Thimble Thurs | | |



Going to Pieces Quilt Co – 1017 W Northland Ave, Appleton, WI – (920) 882-6430

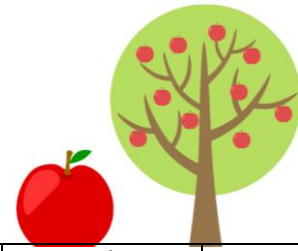
August 2025

| Sunday | Monday | Tuesday | Wednesday | Thursday | Friday | Saturday |
|---|-----------------------|--|--|---------------------|---|---|
|  | | | | | 1 Open Sew ~Last Day to cash in full punch cards | 2 ~Two Bag Totes Class 9-finished |
| 3 CLOSED | 4 Open Sew | 5 Open Sew ~UFO Club 10-11:00 am | 6 Open Sew ~Mondo Bag 4-8:00 (1 of 2) | 7 Thimble Thurs | 8 Open Sew | 9 |
| 10 CLOSED | 11 Open Sew | 12 | 13 Open Sew ~Mondo Bag 4-8:00 (2 of 2) | 14 Thimble Thurs | 15 Open Sew | 16 RED BAG SATURDAY |
| 17 CLOSED | 18 Open Sew | 19 Open Sew | 20 Open Sew | 21 Thimble Thurs | 22 Open Sew | 23 |
| 24 CLOSED | 25 Open Sew | 26 | 27 Open Sew | 28 Thimble Thurs | 29 Open Sew | 30 |
| 31 CLOSED | | | | | | |



Going to Pieces Quilt Co – 1017 W Northland Ave, Appleton, WI – (920) 882-6430

September 2025



| | Monday | Tuesday | Wednesday | Thursday | Friday | Saturday |
|---|--|--|---|---|---|--|
|  | 1 CLOSED | 2 Open Sew ~UFO Club 10-11:00 am | 3 Open Sew | 4 Thimble Thurs | 5 Open Sew | 6 |
| LOSED | 8 Open Sew | 9 | 10 Open Sew ~Beginning Free Motion Quilting 4-8 | 11 Thimble Thurs ~Wool Applique 5:30-8 (1 of 2) | 12 Open Sew | 13 |
| 14 CLOSED | 15 Open Sew | 16 Open Sew | 17 Open Sew ~Beginning Quilting Class 5-8:00 (1 of 4) | 18 Thimble Thurs | 19 No Open Sew  | 20 RED BAG SATURDAY ~Fall Landscape painting with fabric 9-4 |
| 1 CLOSED ~Fall Landscape painting with fabric 9-4 | 22 Open Sew  | 23 | 24 Open Sew ~Beginning Quilting Class 5-8:00 (2 of 4) | 25 Thimble Thurs ~Wool Applique 5:30-8 (2 of 2) | 26 Open Sew | 27 |
| 28 CLOSED | 29 Open Sew ~Autumn Harvest Panel Play 5-8:00 | 30 | <div> October 2025 1 Beginning Quilting Class – 5-8 pm (3 of 4) 8 Beginning Quilting Class – 5-8 pm (4 of 4) 18 Painting With Fabric – 9-4:00 pm </div> | | | |



Going to Pieces Quilt Co – 1017 W Northland Ave, Appleton, WI – (920) 882-6430