

# Going to Pieces Quilt Co

April - June, 2022

Quilters never grow old, they just go to pieces!



## April Showers Event

Our 4th annual "APRIL SHOWERS EVENT" will take place  
Monday, April 11 thru Saturday, April 16.

Lucky customers will draw from our umbrella  
for their discount.

Treats and Door Prizes, too!!!

Don't miss our first official spring event of this year!!

April 11 thru April 16

May Flowers Event – May 11-14 – Watch for details on Facebook!!

### YOUR INSPIRATION DESTINATION QUILT SHOP

Over 5000 bolts of  
traditional to bright fabrics!  
Over 2000 patterns!  
More notions every day! Classes! Ideas!  
300+ Samples!

### SHOP HOURS

Sunday (Oct-Apr)	12-3:00
Sunday (May-Sept)	Closed
Monday	9:00-5:30 pm
Tuesday	9:00-5:30 pm
Wednesday	9:00-5:30 pm
Thursday	9:00-5:30 pm
Friday	9:00-5:30 pm
Saturday	9:00-3:00 pm

### E-mail:

[goingtopiecesquiltcompany@yahoo.com](mailto:goingtopiecesquiltcompany@yahoo.com)

### Website:

[goingtopiecesquiltco.com](http://goingtopiecesquiltco.com)

### FACEBOOK:

Like us on Facebook to receive  
the latest shop information and  
view pictures of our latest projects!

Masks are no longer required to enter our shop; however, we strongly advise wearing one  
if unvaccinated or autoimmune compromised. If ill, please stay home. We thank you.

1017 W Northland Ave, Appleton, WI 54915 (920) 882-6430

Owners: Mary Klein & Joanne Mjos

# Welcome Neighbor!

## Have You Checked Out Our New Neighbor Yet??!!

*The Quilting Connection* has relocated right next door to *Going to Pieces Quilt Company*!! There is even be a door inside to make it easier to visit and see their full line of longarm machines!

*The Quilting Connection* started in Elkhorn, WI in July of 1999. They opened a 2nd location in New London, WI in August of 2012. In 2022 they moved the New London location to it's present site as our new neighbor! *The Quilting Connection* offers the full line of **Handi Quilter** longarm machines. They offer a wide variety of classes on how to use the machines, and you can even rent time to try before you buy! They also offer service, cleaning, and repairs for the **Handi Quilter** machines.

Their shop hours: Wednesday 10:30 – 5:30; Thursday & Friday 10:00 – 4:00; Saturday 10:00 – 3:00  
Check out their website, [LongarmConnection.com](http://LongarmConnection.com) for more information!

## Full line of HQ machines!



## \*2 Wisconsin Locations\*

Beginning on Sunday, May 1,  
we will be Closed on Sundays until Sunday, October 2.

In order to give our staff and customers a day to enjoy our beautiful Wisconsin summer with family and loved ones, we will again be CLOSED ON SUNDAYS beginning in May until the end of September. We have also scaled down our class offerings for the same reason 😊.

We thank you for your continued support as our shop keeps growing and growing and growing!  
Enjoy your summer, wherever you may be spending time. Our staff sure will!!



### Remember:

Some of the best  
memories are made  
in flip flops!!

### On the pontoon.....

Makin' waves and catchin' rays up on the roof  
Jumpin' off the back, don't act like you don't want to  
Party in slow motion, out here in the open  
Mmmmm.....motorboatin'





# Some of our Latest Fabric Lines . . . Gorgeous!!



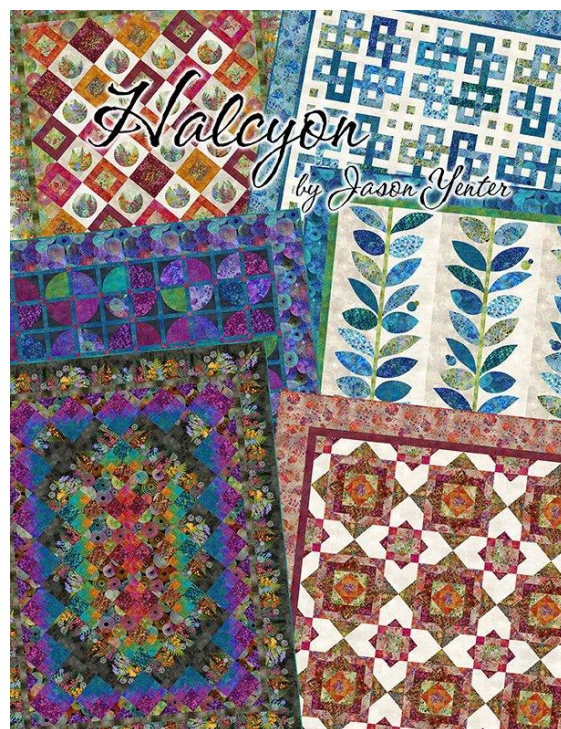
Urban Homestead by Primitive Gatherings



Starlight Gatherings by Primitive Gatherings



Right as Rain by Kim Diehl



Halcyon by Jason Yenter



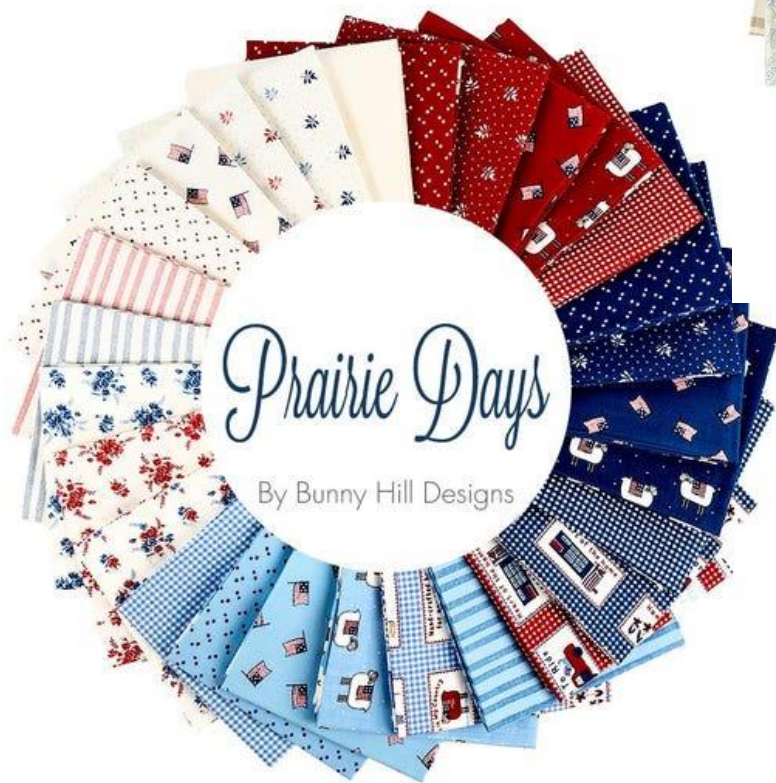
# So Many New Lines of Fabric!



*Astra by Janet Clare for Moda*



*Newport by Minick & Simpson*



*Prairie Days by Bunny Hill Designs*

## **We also have:**

*Many more Maywood flannels*

*New children's flannels*

*New batiks from Robert Kaufman  
(perfect for spring)*

*And more new lines arriving  
weekly!*

# Classes

## IT'S A COMBO CLASS!

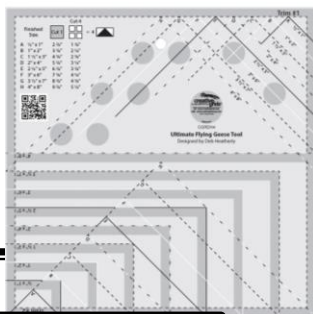
*Wednesday, April 13 – 5-8:00 pm*

Join Mary as she combines two of her most popular classes –

The **HALF SQUARE TRIANGLE CLASS**  
and  
The **FLYING GEESE CLASS**

into one fun night using the “Tucker Trimmer” ruler and the “Wing Clipper” ruler.

**Class \$25** includes practice kits  
You must purchase both rulers for this class.



## WOOL HAND APPLIQUE

*Thursday, April 28 & May 12  
5-8:00 pm*

In this 2 evening class, you will learn how to hand applique on wool with Kim. You will be making a wonderful 8” scalloped mat called TUSIE MUSSIE by Granny’s Legacy.

Kim will teach you several different stitches as you complete this adorable piece.

**Kit is \$22.95**  
**Class: \$30.00**



**NOTE:** Classes have been scaled down this quarter because we’ll be on the pontoon (see page 2 😊)

## PAPER PIECING TECHNIQUE CLASS

*Tuesday, April 19 – 4-7:00 pm*

This class will be a **TECHNIQUE** class, solely for the purpose of teaching you how to paper piece. Paper piecing can be an instant gratification process if done correctly. Join Heidi for lots of fun as you create a paper pieced project!

**Class: \$15.00** (includes pattern and fabric to complete class project and learn the technique)

## OH, SCRAP!

*Tuesday, May 17 – 5-7:00 pm*



Join Heidi and make a patriotic table runner with scraps! She will teach you how to take the scraps you have at home and create a delightful table runner. From there, you can use your scraps and stash up by creating one of a kind quilts, pillows, runners, you name it!

She will have some of her scrap quilts at class to give you ideas and inspiration. Gather all of your red, white/cream and blue scraps and join Heidi for an evening of creativity!  
**Class - \$15.00**

## PERSONAL BACKPACK

*Mondays – May 16 & 23 – 10:00 am until 4:00 pm*

This two day class will teach you how to make the perfect, personal backpack for you or anyone on your gift list! You will decide what your backpack will do for you! Great as a day-pack for travel or for shopping. Convenient interior and exterior pockets, plus a zippered security pocket on the back.

Your backpack can be made in quilted whole cloth, stitch and flip, or your own block of choice. Join Ginger and make a personalized, must have backpack! Backpacks shown here were made by Ginger! They are awesome!!  
**Class - \$30.00**





## **CLASS NOTES:**

Please arrive 15 minutes prior to start time and be ready to go! MASKS MUST BE WORN UNTIL YOU ARE DISTANCED IN CLASSROOM. THEN YOU MAY REMOVE YOUR MASK OR LEAVE IT ON.

Please come prepared. Read your pattern, if applicable. We suggest you bring along basic sewing supplies: Notebook, pen, scissors, pins, thread, appropriate ruler for your project, rotary cutter.

If your class requires a sewing machine, please make sure you are familiar with the mechanics of the machine, and be sure it is in good working condition. Bring your manual, just in case ☺

## **POLICIES:**

*All classes must be paid for at the time of sign up.* Should you decide to cancel before the class, you will receive an in- store credit. If the class is cancelled due to low attendance, you will receive your choice of either an in-store credit or full refund. We try to never cancel a class but sometimes this is beyond our control. **Thank you!**

## **Simple Whatnots Club 11**

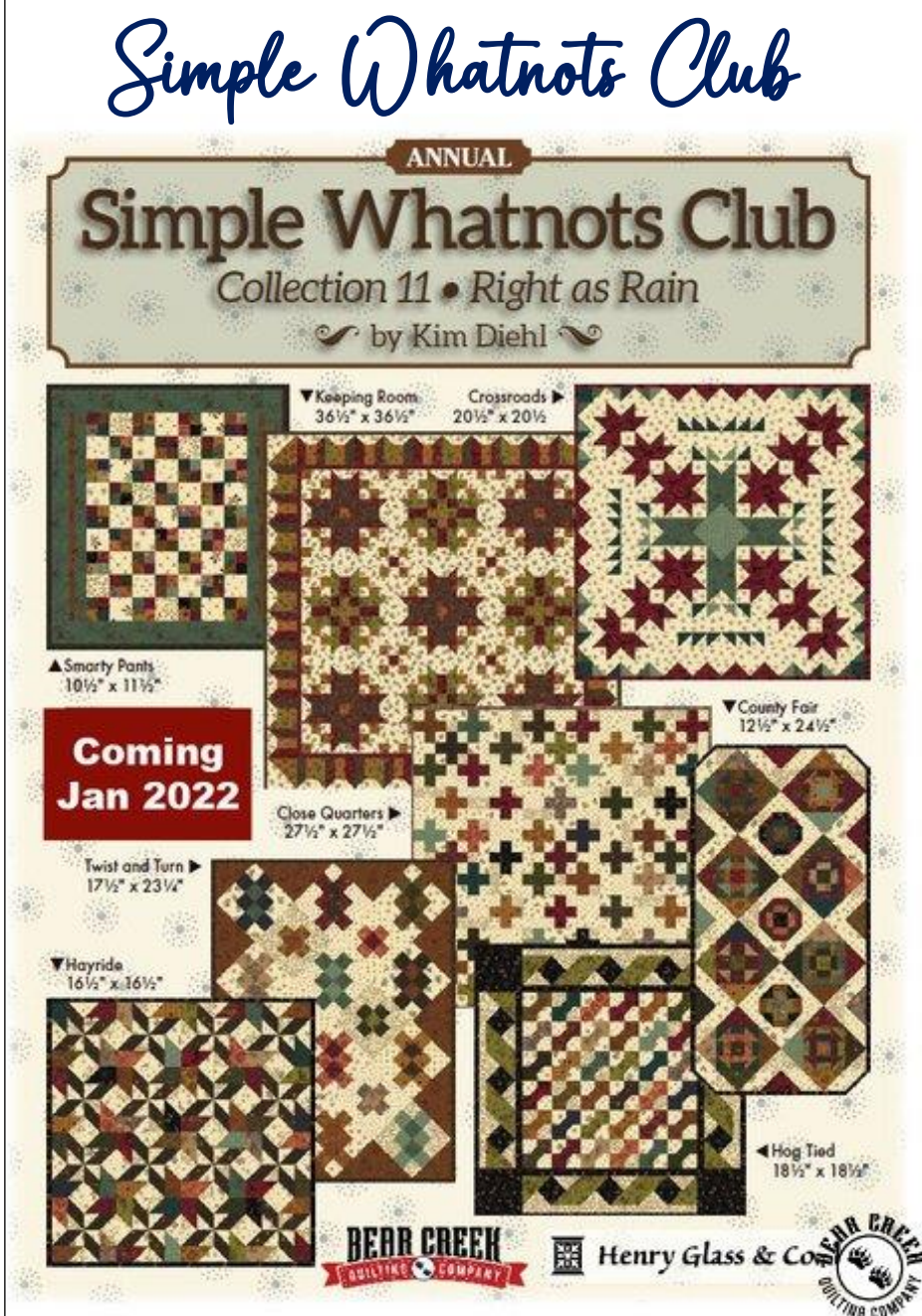
**Be sure to stop in the shop and see the samples we have finished!!**

New for 2022 and eleventh in the series, exclusive to quilt shops! Henry Glass and Kim Diehl bring you the next collection of the loved **Simple Whatnots Club**, featuring Kim's new fabric collection **Right as Rain**. For this annual club, Kim has created EIGHT new simple and beautiful miniature quilt patterns exclusively for this club. Many of the patterns have fun added bonuses such as fun recipes, an extra project or tips and tricks. All eight miniature quilts are quick and easy to complete using basic quilting skills. These little miniatures are perfect for decorative wall hangings, gifts and table toppers!

The eight miniature **Simple Whatnots Club** patterns:

**Smarty Pants** = 10 1/2 by 11 1/2  
**Keeping Room** = 36 1/2 by 36 1/2  
**Crossroads** = 20 1/2 by 20 1/2  
**County Fair** = 12 1/2 by 24 1/2  
**Hog Tied** = 18 1/2 by 18 1/2  
**Hayride** = 16 1/2 by 16 1/2  
**Close Quarters** = 27 1/2 by 27 1/2  
**Twist and Turn** = 17 1/2 by 23 1/4

*Cost depends on monthly project and size. Once again, Kim has knocked it out the of the park. There are only a few spots left.*



# Retreats

*April 22, 23, 24*

Spend THREE days in our NEW CLASSROOM ADDITION, sewing and laughing, as you begin a new project or finish an old one. Our retreats have been popular and fill up fast.

Each night you will go home to your own bed and much needed rest. Each morning you will return to keep on sewing. No interruptions! Your only worry? What project to work on!

\$60.00, a dish to pass and snack to share, please.

Our retreats are limited to 16 to ensure safety  
□ for all.

*Friday 9-9:00 Saturday 8-9:00  
Sunday 8-2:00*

# Congrats

## SNOWMAN DASH WINNERS:

### GRAND PRIZE WINNER

Geraldine Schrader

### \$50 GIFT CARD

Nancy Lee – Going to Pieces

Dawn Seiltz – Silver Thimble

Kathy Sheehy – Primitive Gatherings

Rebecca Zerfas – Quilting Divas

### \$25 GIFT CARD

Barb Dillon – Quilting Divas

Judy Hoida – Primitive Gatherings

Nancy Larsen – Going to Pieces

Linda Watermolen – Silver Thimble

## ANNIVERSARY WINNERS:

### DAY 1 - MONDAY

Carla Petermann

### DAY 2 - TUESDAY

Chris Matthias

### DAY 3 - WEDNESDAY

Ginger Dean

### DAY 4 - THURSDAY

Nicole Van Stippen

### DAY 5 - FRIDAY

Debbie Cwik

### DAY 6 - SATURDAY

Jan Vanden Heuvel

### GRAND PRIZE

Sharron Mignon

*Sew much fabric,  
sew little time...*

Want a machine that's a jack-of-all trades yet small enough to take on the road, to a class or even to a friend's house? Then it's time to celebrate, because you found it. The **BABY LOCK JUBILANT** sewing machine is ideal for a variety of sewing projects like quilt piecing, smaller home décor and even basic garments. It's a machine that gives you plenty of genuine opportunities to let your creativity shine and be jubilant!

Top features include:

**80 built-in stitches \* Automatic needle threader \* LCS screen \* Quick-set, drop in bobbin \* Free-arm sewing \* Drop feed for free motion techniques**

**\$599.99**

(Can be serviced at  
KK Sew & Vac, located  
in Darby and DePere)



## Two Great Portable, Reliable Sewing Machines!

We have had this machine, **SPARROW by EVER SEWN 30S**, in the shop for months and have found it to be a reliable little work horse which is quiet, precise, easy to operate, light to carry.

### Features include:

**Thread cutter button \* Many decorative stitches including numbers & script \* Needle up/down position \* Auto lock button \* Mirror image button \* Speed limiting adjustment lever \* Memory button \* Stitch length & width adjustment \* LCD screen**

**\$499.99**





# Our Clubs

## UFO CLUB

Tackle that quilting bucket list! This club meets the first Tues of the month. A \$5 membership fee gets you started.

Each month, members hand in a list of projects they hope to accomplish. Completed projects are brought in the next month for show and tell. If you didn't finish, you pay \$5 per unfinished project to the kitty. All money in the kitty will be turned into gift cards to be given to winners drawn at the Oct meeting. JOIN US!!

April 5 - May 3 - June 7

## OPEN SEW TUESDAYS

9:00 until 4:30 pm

We will host OPEN SEW TUESDAYS for those that need to get projects done, those that have other projects, and those who just like to sew and meet new friends.

April 5 & 19  
May 3 & 17  
June 7 & 21

## OPEN SEW WEDNESDAYS & FRIDAYS

9:00 until 4:30 pm

We will host OPEN SEW DAYS for those that need to get projects done, those that have other projects, and those who just like to sew and meet new friends.

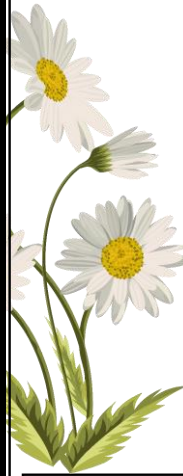
## RED BAG SATURDAYS

On the third Saturday of each month, it's "Red Bag Saturday" at our shop. On these Saturdays, surprise discounts will be announced. If you have a GOING TO PIECES REUSABLE RED BAG you are eligible for the discount!

Get yours today! \$3.95

## Thank you for following Club and Class rules:

- ~ Reserve your spot
- ~ Masks are not required; however, if you are unvaccinated or autoimmune compromised, we urge you to wear a mask.
- ~ Use hand sanitizer upon entry
- ~ If you are feeling under the weather, please stay home.



## SENIOR QUILTERS (60+ yrs)

WHAT'S GREAT ABOUT BEING OVER 60??

First Monday of the month – Receive double punches for your purchase of regularly priced merchandise!!

## THIMBLE THURSDAYS

Grab your hand projects ... then head on over for a day of sewing, friendship and LOTS of laughs! You never know what tips you are going to pick up and what projects you just may complete. This is a popular event with embroidery and handwork groups, so come see what all the excitement is about! The ladies are at the shop from noon until 4:00 every Thursday.



## GOING TO PIECES QUILT

CO is a drop off site for Project Linus donations.

This wonderful organization is responsible for providing many, many children with something to hold onto when life seems to have failed them.

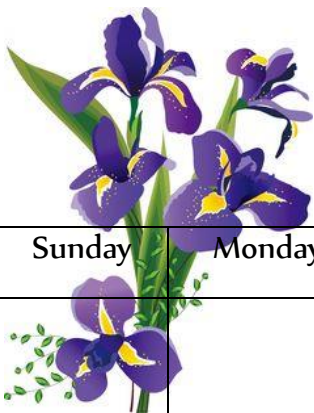
**Project  
Linus**



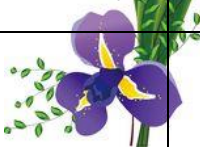

Providing Security  
Through Blankets

**PLEASE NOTE: DO NOT LEAVE DONATIONS AT EITHER DOOR WHEN WE ARE NOT OPEN. SADLY, THERE HAVE BEEN THEFTS IN OUR AREA. We will accept any donations during open hours. Thank you.**





# April 2022

Sunday	Monday	Tuesday	Wednesday	Thursday	Friday	Saturday
					1 <b>Open Sew</b>	2
3 <b>OPEN</b>	4 ~Sr Quilter's Day	5 <b>Open Sew</b> ~UFO Club 10-11:00 am	6 <b>Open Sew</b>	7 Thimble Thurs	8 <b>Open Sew</b>	9
10 <b>OPEN</b>	11	12	13 <b>Open Sew</b> ~Combo Ruler Class 5-8	14 Thimble Thurs	15 <b>Open Sew</b>	16 <b>RED BAG SATURDAY</b>
4 <sup>th</sup> Annual April Showers Event						
17 <b>CLOSED</b> 	18	19 <b>Open Sew</b> ~Paper piecing class 4-7:00	20 <b>Open Sew</b>	21 Thimble Thurs	22 <b>Open Sew</b>	23 <div>In Store Retreat</div>
24 <b>OPEN</b> <div>Retreat</div>	25	26	27 <b>Open Sew</b>	28 Thimble Thurs ~Wool hand applique 5-8	29 <b>Open Sew</b>	30



Going to Pieces Quilt Co – 1017 W Northland Ave, Appleton, WI – (920) 882-6430

# May 2022

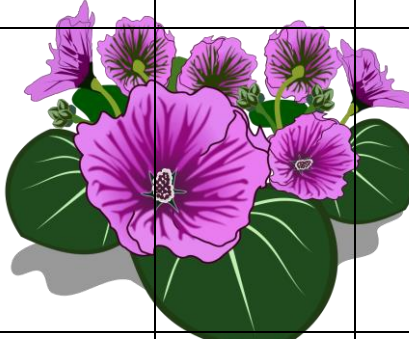

Sunday	Monday	Tuesday	Wednesday	Thursday	Friday	Saturday
1 <b>CLOSED</b>	2 ~Sr Quilter's Day	3 ~UFO Club 10-11 am <b>Open Sew</b>	4 <b>Open Sew</b>	5 Thimble Thurs	6 <b>Open Sew</b>	7
8 <b>CLOSED</b> <i>Happy Mother's Day</i>	9	10	11 <b>Open Sew</b>	12 Thimble Thurs ~Wool hand applique 5-8	13 <b>Open Sew</b>	14
<b>May Flowers Event</b>						
15 <b>CLOSED</b>	16 ~Personal Backpack Class 10-4:00	17 <b>Open Sew</b> ~Oh Scrap! Class 5-8:00	18 <b>Open Sew</b>	19 Thimble Thurs	20 <b>Open Sew</b>	21 <b>RED BAG SATURDAY</b>
22 <b>CLOSED</b>	23 ~Personal Backpack Class 10-4:00	24	25 <b>Open Sew</b>	26 Thimble Thurs	27 <b>Open Sew</b>	28
29 <b>CLOSED</b>	30	31				



Going to Pieces Quilt Co – 1017 W Northland Ave, Appleton, WI – (920) 882-6430



# June 2022

Sunday	Monday	Tuesday	Wednesday	Thursday	Friday	Saturday
			1 <b>Open Sew</b>	2 Thimble Thurs	3 <b>Open Sew</b>	4
	5 <b>CLOSED</b>	6 ~Sr Quilter's Day	7 <b>Open Sew</b> ~UFO Club 10-11:00 am	8 <b>Open Sew</b>	9 Thimble Thurs	10 <b>Open Sew</b>
11						
12 <b>CLOSED</b>	13	14	15 <b>Open Sew</b>	16 Thimble Thurs	17 <b>Open Sew</b>	18 <b>RED BAG SATURDAY</b>
19 <b>CLOSED</b> <b>HAPPY</b>  <b>Father's DAY</b>	20	21 <b>Open Sew</b>	22 <b>Open Sew</b>	23 Thimble Thurs	24 <b>Open Sew</b>	25
26 <b>CLOSED</b>	27	28	29 <b>Open Sew</b>	30 Thimble Thurs	31 <b>Open Sew</b>	



Going to Pieces Quilt Co – 1017 W Northland Ave, Appleton, WI – (920) 882-6430