

Going to Pieces Quilt Co

April - June, 2023

Quilters never grow old. they just go to pieces!



It's raining DEALS and STEALS at
Going to Pieces Quilt Company
during our 5th annual

April Showers Event

**Lucky customers will draw
from our umbrella discounts – up to 25%!!
Treats and Door Prizes, too!!!
Don't miss our first official spring event of this year!!**

**Monday, April 17 thru
Saturday, April 22**



Beginning on Sunday, May 7,
we will be **Closed on Sundays** until
Sunday, October 1.

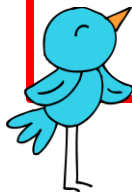
In order to give our staff and customers a day to
enjoy our beautiful Wisconsin summer
with family and loved ones we will again be
CLOSED ON SUNDAYS beginning in May until October 1.

Class offerings for the summer

have been scaled down for the same reason 😊.

We thank you for your continued support as our shop keeps
growing and growing and growing!

Enjoy your summer, wherever you may be!



Watch Us EXPAND.....

**Yup! You read that correctly! *Going to Pieces Quilt Co* is
adding an additional 800 square feet to our existing
footprint!**

**We will be adding the present site of
The Quilting Connection to our shop.**

***The Quilting Connection* will be
moving to the next spot over,
giving both of us more room!**

**The good news? Customers will
still be able to visit both sites.**

SO MUCH EXCITEMENT!!



Some of our Latest Fabric Lines



Filigree by Moda



Date Night by Moda



Amelia's Blues by Moda



Sky Summer Breeze by Moda



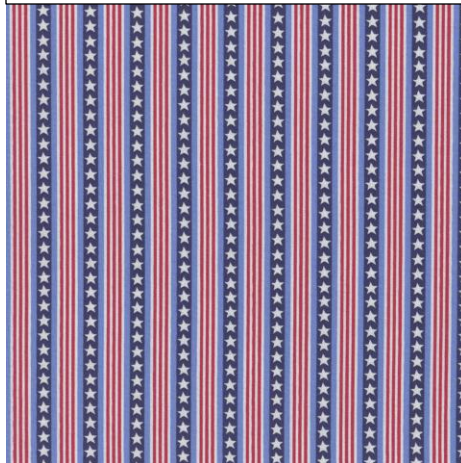
Flower Power by Moda



Bleu de France
by French General

Bleu de France by French General

STARS & STRIPES
A beautiful collection
of 24 patriotic fabrics from Andover



Butternut & Peppercorn
by Pam Buda

Butternut & Peppercorn by Marcus

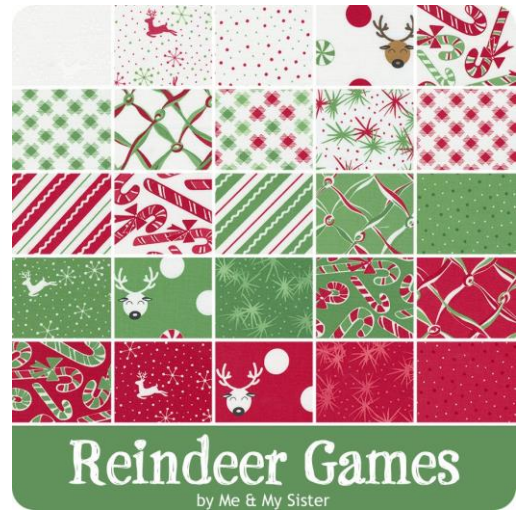
New Fabrics Arriving in May



Didn't we just finish Christmas?
Well, Christmas fabrics for
2023 are headed our way!
PLEASE don't shoot
this messenger



Good News Great Joy by Moda



Reindeer Games by Moda



Holly Jolly by Moda



Christmas Eve by Moda



Autumn Waltz by Marcus

AUTUMN WALTZ (left) A favorite part of autumn is feeling the cold, crisp breeze as the season changes. Mr. Scarecrow is dancing in the autumn breeze, entertaining a friendly crow. The coordinating prints are a collection of fall hues, old denim, pumpkin, spice, and cinnamon.

SNOWFOLKS (right) Family memories are all the inspiration needed to capture the fun of a Wisconsin winter — activities like making s'mores by a campfire, sledding, and ice fishing. The delightful panel showcases your love for embroidery, or you can create with the panel as it is. Beautiful coordinating fabrics also on their way

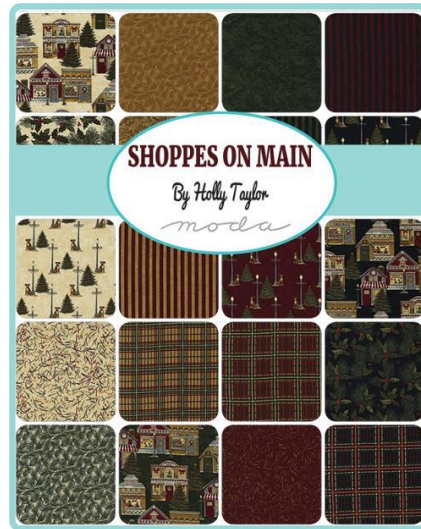


Snowfolks by Marcus

New Fabric Lines Arriving in June



Holidays at Home by Moda



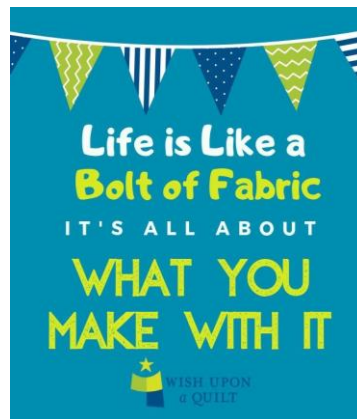
Shoppes on Main by Moda



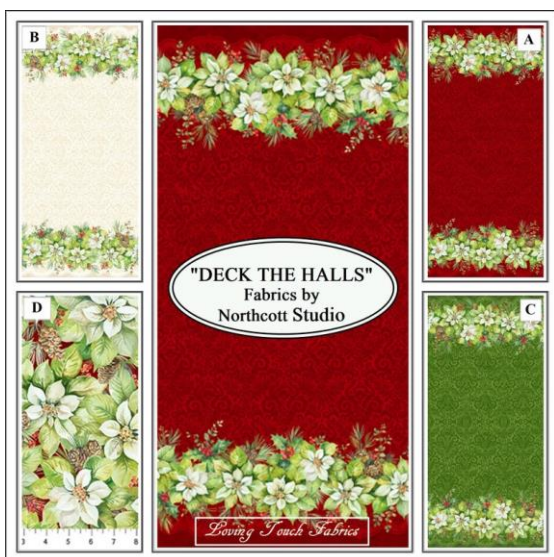
Favorite Things by Moda



Blizzard Blues by Moda



First Frost by Northcott



Deck the Halls by Northcott



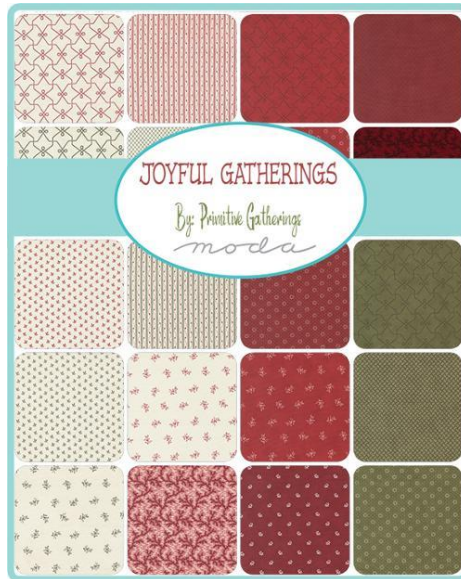
Northern Peaks by Northcott (left)

Another gorgeous collection from Deborah Edwards and Melanie Samra, this time featuring mighty bears in their natural habitat. Digitally printed trees, tree rings, ferns, and bear tracks also litter this collection, all in beautiful watercolor textures of green, blue and brown.

Primitive Gatherings Fabrics



RUSTIC GATHERINGS by Moda (arriving in May)



JOYFUL GATHERINGS by Moda (arriving in July)

Watch for...

We have a HUGE new selection of wide backed fabric coming soon.

This fabric is 108" wide and perfect to back that masterpiece you just finished!



Joanne, Mary and the entire GTP staff would like to personally thank each and every one of you for joining us in January for our Anniversary Celebration. Without you, we would not have the successful quilt shop we all know and enjoy.

Every Smile - Every Story - Every Decision

We thank you for sharing your love of quilting with us.

Our TWELFTH ANNIVERSARY CELEBRATION
was loads of fun and netted some lucky winners:

MONDAY

Bonnie Freimaik
Louise Fahrenkrug
Bruce Jensema
Sandy Krueger

WEDNESDAY

Marge Noel
Sue Schrottky
Barb Eickhoff
Kathy Hargett

FRIDAY

Peggy Bell
Kathy Mauss
Ann Forseth
Mark Goodman

TUESDAY

Patti Seeman
Kim Steier
Peggy Hawley
Deb Will-Jochman

THURSDAY

Jen Kuhlow

SATURDAY

Kris Anthony
Cathy Bolwerk
Kay Beyer
Majorie Nelson

CELEBRATING
12 years

GIFT CARD WINNERS

\$20	Sue De Vries Linda Krause
\$25	Mary Preston Mary Koch
\$50	Nicole Van Stippen Joanne Delforge

Classes

Kathy Keene's TWO DAY Landscape "Painting" Workshop!

Friday, May 19 – 9 am until 4 pm
Saturday, May 20 – 9 am until 3 pm

Join Kathy Keene and learn how to create a beautiful landscape "painting" using a variety of fabrics. No sewing is involved. Your finished product will look like a watercolor painting! This class is spring inspired and will be a favorite project for many years. Sample on the right. Class size is limited to 8.

Class: \$125.00



NEW! Monthly Bag Class!



April & May Bag

Travel Essentials 2.0

Two Saturdays – April 22
and May 6 (10-4:00)

Carry essentials in style with this handy fold-up organizer. It has mesh and vinyl pockets for visible storage. A deep zippered pocket on the bottom on the inside is perfect for larger items. A zippered pocket on the outside conceals a hanging strap that enables the organizer to be hung from a hook.

27½"H x 12"W when open, 9"H
x 12"W x 3"D when closed.

There is some homework.
Class: \$45.00

Barbados Bag

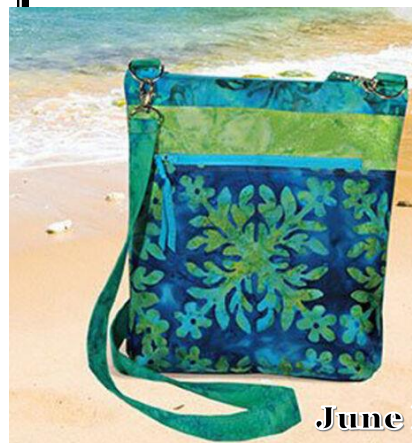
Wednesday, June 14, 10-4 pm

This bag is so styling and great for traveling...wear it cross body and keep your hands free!

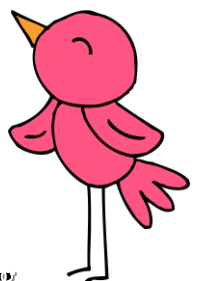
Bag design features lots of pockets including one for cell phone, and easy zipper top closure and a 48" long strap that can be made to any length -- make the strap with or without the swivel hook & D ring hardware.

Fat quarter friendly.

Class: \$20.00



June Bag



Classes



CLASS POLICIES:

All classes must be paid for at the time of sign up.

Should you decide to cancel before the class, you will receive an in-store credit. If the class is cancelled due to low attendance, you will receive your choice of either an in-store credit or full refund.

We try to never cancel a class but sometimes this is beyond our control.

Thank you for your understanding!

Wool Hand Applique

Thursday, May 11 & 25 5-8:00 pm

In this 2 evening class, you will learn how to hand applique on wool with Kim. You will be making a wonderful 8" scalloped mat called TUSSIE MUSSIE by Granny's Legacy.

Kim will teach you several different stitches as you complete this adorable piece. The sample is in the shop for you to see.

Kit is \$22.95

Class: \$30.00



BUCKET HAT

Saturday, April 29 9:30 until 1:00



This adorable, reversible hat is perfect for you or a child! In class you will get the pattern and complete your hat. Join Lisa for this fun day and make a hat perfect to wear on your spring break, when you're working in the garden, at your favorite sporting event or to protect you from the sun. And what a GREAT GIFT!

This project is perfect for any level of sewer. And you can let your imagination go wild!!

Upon payment for this class, You will be given an adult hat pattern. You will have HOMEWORK! Please have the hat cut out before class.

Class: \$20.00



Beginning Paper Piecing

Tuesday, June 6 5-7:00 pm

This class will be a TECHNIQUE class, solely for the purpose of teaching you how to paper piece. Paper piecing can be an instant gratification process if done correctly. Join Heidi for lots of fun as you create a paper pieced project!

The above sample (not the class project) shows a completed paper pieced square. Precision is easily accomplished with paper piecing. Note the points, seams, etc.

Class: \$15.00 (includes pattern and fabric to complete class project and learn the technique)

Classes

Beginning Machine Applique

Wednesday, April 26 5:30-8:30

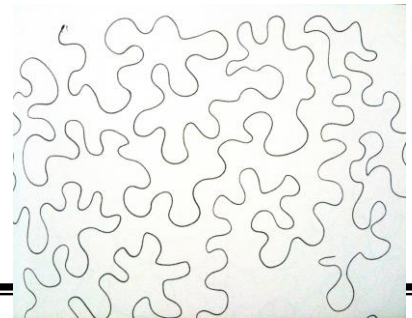
Perfect for SPRING!! Join Joanne and learn to applique a towel with a little bird design! We are sure you will be a new fan of this fun and addicting craft!

Class: \$30.00
Includes kit!

Basic Free Motion Quilting

Wednesday, June 21 5:30 - 8:30 pm

Join Joanne and learn basic free motion quilting techniques. Once you learn the concept and practice, practice, practice, the possibilities are endless!! Class: \$15

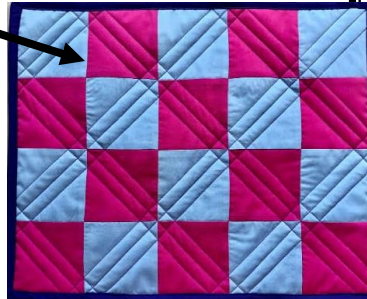


Stitch in the Ditch Quilting

Wednesday, May 17 5:30-8:30 pm

Learn the technique of stitching in the ditch which involves sewing down the channel of an existing seam (the "ditch") to secure your quilt in place without being able to see stitches on the quilt top. Grid quilting will also be covered. Join Joanne and learn something new or perfect your "ditch" stitching!

Class: \$15



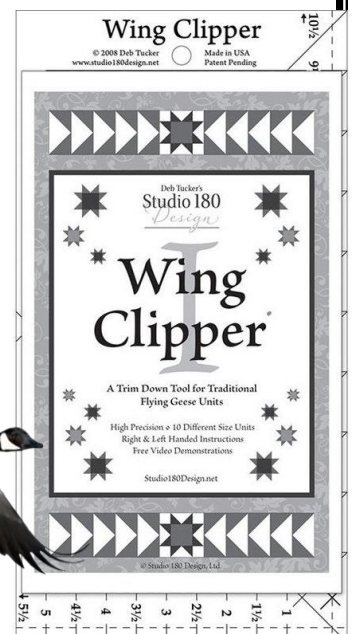
Flying Geese

Wednesday, May 3 5 - 7:30 pm

Join Mary and learn to make the PERFECT flying geese. In fact, this ruler makes FOUR perfect flying geese at the same time!!

The "Wing Clipper" ruler is required for this class.

Class: \$15
(Kits are cut and provided by Mary)



Half Square Triangles

Wednesday, April 19 5 - 7:30 pm

Join Mary and learn to make the PERFECT half square triangles. The "Tucker Trimmer" is a must have to be a successful quilter. Learn how to use it so it can start helping you! The "Tucker Trimmer" ruler is required for this class.

Class: \$15
(Kits are cut and provided by Mary)





Simple Whatnots Club

Collection 12

includes eight fun-to-stitch patchwork quilts.

Small project sizes (typically 40" square or less) make these quilts approachable and easy to finish. Pattern handouts feature clear, concise project directions, and often include extra snippets of information providing sewing tips, recipes, occasional crafty things, and hints for living with quilts. We do have some kits still available. Haven't tried these yet? You won't be sorry!

**Samples of these
gorgeous and colorful quilts
are in the shop!!**



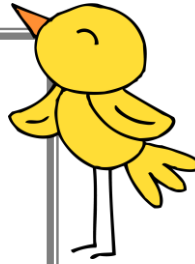
Our Clubs

UFO CLUB

Tackle that quilting bucket list! This club meets the first Tues of the month. A \$5 membership fee gets you started.

Each month, members hand in a list of projects they hope to accomplish. Completed projects are brought in the next month for show and tell. If you didn't finish, you pay \$5 per unfinished project to the kitty. All money in the kitty will be turned into gift cards to be given to winners drawn at the Oct meeting. JOIN US!!

April 4 - May 2 - June 6



Thank you for
following
Club and Class rules:

- ~ Masks are not required; however, if you are unvaccinated or autoimmune compromised, we urge you to wear a mask.
- ~ Use **hand sanitizer** upon entry
- ~ If you are feeling under the weather, please stay home.

OPEN SEW TUESDAY

9:00 until 4:30 pm

We will host OPEN SEW TUESDAYS for those that need to get projects done, those that have other projects, and those who just like to sew and meet new friends.

April 4 & 18

May 2 & 16

June 6 & 20

OPEN SEW WED & FRI

9:00 until 4:30 pm

We will host OPEN SEW DAYS for those that need to get projects done, those that have other projects, and those who just like to sew and meet new friends. Check calendar for verification.

RED BAG SATURDAY

On the third Saturday of each month, it's "Red Bag Saturday" at our shop. On these Saturdays, surprise discounts will be announced. If you have a **GOING TO PIECES REUSABLE RED BAG** you are eligible for the discount!
Get yours today! \$3.95

SR QUILTERS (60+ yrs)

WHAT'S GREAT ABOUT BEING OVER 60??

First Monday of the month – Receive double punches for your purchase of regularly priced merchandise!!

THIMBLE THURSDAY

Grab your hand projects ... then head on over for a day of sewing, friendship and LOTS of laughs! You never know what tips you are going to pick up and what projects you just may complete. This is a popular event with embroidery and handwork groups, so come see what all the excitement is about! The ladies are at the shop from noon until 4:00 every Thursday.



GOING TO PIECES QUILT CO

is a drop off site for Project Linus donations.

This wonderful organization is responsible for providing many, many children with something to hold onto when life seems to have failed them.

**Project
Linus**

Providing Security
Through Blankets

PLEASE NOTE:

DO NOT LEAVE DONATIONS AT EITHER DOOR WHEN WE ARE NOT OPEN. SADLY, THERE HAVE BEEN THEFTS IN OUR AREA. We will accept any donations during open hours.

Thank you.



Going to Pieces will have a new and improved website that will connect with Instagram and Facebook!

SNOWMAN DASH WINNERS:

- \$100** Sandra Kozicki – GRAND PRIZE!!!
\$50 Mary Radichel -Quilting Divas
 Marian Galston – My Fav Quilt Shop
 Roy Hartjes – Primitive Gatherings
 Kathy Wege – Going to Pieces
\$25 Louis Olritt – Quilting Divas
 Shannon Duvernell – My Fav Quilt Shop
 Cheryl Zehrens – Going to Pieces
 Stacy Yaskinski – Primitive Gatherings

Congrats



Two Great Portable, Reliable Sewing Machines!

Want a machine that's a jack-of-all trades yet small enough to take on the road, to a class or even to a friend's house? Then it's time to celebrate, because you found it. The **BABY LOCK JUBILANT** sewing machine is ideal for a variety of sewing projects like quilt piecing, smaller home décor and even basic garments. It's a machine that gives you plenty of genuine opportunities to let your creativity shine and be jubilant!

Top features include:

*80 built-in stitches * Automatic needle threader * LCS screen * Quick-set, drop in bobbin * Free-arm sewing * Drop feed for free motion techniques*

\$599.99

(Can be serviced at KK Sew & Vac, located in Darboy and DePere)



We have had this machine, **SPARROW by EVER SEWN 30S**, in the shop for months and have found it to be a reliable little work horse which is quiet, precise, easy to operate, light to carry.

Features include:

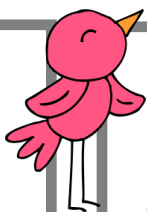
*Thread cutter button * Many decorative stitches including numbers & script
 * Needle up/down position
 * Auto lock button
 * Mirror image button
 * Speed limiting adjustment lever * Memory button
 * Stitch length & width adjustment * LCD screen*

\$499.99



YOUR INSPIRATION DESTINATION QUILT SHOP

Over 5000 bolts
 Of traditional
 to bright fabrics!
 Over 2000 patterns!
 More notions every day! Classes!
 Ideas!



SHOP HOURS

Sunday (Oct-Apr)	12-3:00
Sunday (May-Sept)	Closed
Monday	9:00-5:30
Tuesday	9:00-5:30
Wednesday	9:00-5:30
Thursday	9:00-5:30
Friday	9:00-5:30
Saturday	9:00-3:00

E-mail:

Goingtopiecesquiltcompany
 @yahoo.com

Website:

goingtopiecesquiltco.com

FACEBOOK:

Like us on Facebook to receive the latest shop information and view pictures of our latest projects!

PLEASE NOTE: Masks are no longer required to enter our shop; however, we strongly advise wearing one if unvaccinated or autoimmune compromised. If ill, please stay home. We thank you.

April 2023

Sunday	Monday	Tuesday	Wednesday	Thursday	Friday	Saturday
						1
2 OPEN	3 ~Sr Quilter's Day	4 ~UFO Club 10-11:00 am Open Sew	5 Open Sew	6 Thimble Thurs	7 Open Sew	8
9 CLOSED <i>Happy Easter</i>	10	11	12 Open Sew	13 Thimble Thurs	14 In Store Retreat	15 RED BAG SATURDAY
16 OPEN Retreat	17	18 Open Sew	19 Open Sew ~Half Sq Triangle Class 5-7:30	20 Thimble Thurs	21 Open Sew	22 ~Travel Essentials 10-4 (1 of 2 days)
WEEKLONG APRIL SHOWERS EVENT						
23 OPEN	24	25	26 Open Sew ~Beg Machine Applique 5:30-8:30	27 Thimble Thurs	28 Open Sew	29 ~Bucket Hat Class 9:30-1
30 OPEN	<p>APRIL QUILTING TIP . . . The seam ripper: friend or foe?</p> <p>It may seem like the seam ripper isn't a tool you'd want to use, but a seam ripper soon becomes one of your favorite tools. It is much easier to remove unwanted stitches with a seam ripper than trying to do it with a pair of scissors or by hand. Have you tried "The Quick Ripper"? Runs on batteries, it's awesome, and we carry it!</p>					



Going to Pieces Quilt Co – 1017 W Northland Ave, Appleton, WI – (920) 882-6430

May 2023

Sunday	Monday	Tuesday	Wednesday	Thursday	Friday	Saturday
	1 ~Sr Quilter's Day	2 Open Sew ~UFO Club 10-11:00 am	3 Open Sew ~Flying Geese Class 5-7:30	4 Thimble Thurs	5 Open Sew Cinco de Mayo	6 ~Travel Essentials 10-4 (2 of 2 days)
7 CLOSED	8	9	10 Open Sew	11 Thimble Thurs ~Wool Hand Applique 5-8 (1 of 2 days)	12 Open Sew	13
14 CLOSED HAPPY Mother's DAY 	15	16 Open Sew	17 Open Sew ~Stitch in the Ditch Quilting 5:30-8:30	18 Thimble Thurs	19 Open Sew ~Landscape Painting Class 9-4	20 RED BAG SATURDAY ~Landscape Painting Class 9-3
21 CLOSED	22	23	24 Open Sew	25 Thimble Thurs ~Wool Hand Applique 5-8 (2 of 2 days)	26 Open Sew	27
28 CLOSED	29	30 Open Sew	31 Open Sew	MAY QUILTING TIP: Not all machine needles are created equal, and some needles are better suited for quilting than others. Be sure to read the packaging. Switch out needles often, your machine will thank you! We carry Schmetz brand machine needles.		



Going to Pieces Quilt Co – 1017 W Northland Ave, Appleton, WI – (920) 882-6430

June 2023

Sunday	Monday	Tuesday	Wednesday	Thursday	Friday	Saturday
<p>JUNE QUILTING TIP: Use a starch spray when pressing your fabric. This helps immensely when pressing fabric in preparation for cutting. Best Press is a fantastic choice, especially if you have stubborn wrinkles in your fabric. We carry this product, which comes in different fragrances.</p> 				1 Thimble Thurs	2 Open Sew	3
4 CLOSED	5 ~Sr Quilter's Day	6 Open Sew ~UFO Club 10-11:00 am ~Beginning Paper Piecing 5-7	7 Open Sew	8 Thimble Thurs	9 Open Sew	10
11 CLOSED	12	13	14 Open Sew ~Barbados Bag Class 10-4	15 Thimble Thurs	16 Open Sew	17 RED BAG SATURDAY
18 CLOSED 	19	20 Open Sew	21 Open Sew ~ Basic Free Motion Quilting Class 5:30-8:30	22 Thimble Thurs	23 Open Sew	24
25 CLOSED	26	27	28 Open Sew	29 Thimble Thurs	30 Open Sew	31

