

GOING TO PIECES QUILT CO



1017 W Northland Ave, Appleton, WI 54915 (920) 882-6430

July – September, 2019



“Quilters never grow old, they just go to pieces!”



Christmas In

JULY

Our 9th Annual!

July 24 – 27th



Each year during this week, we feature new ideas, the latest Holiday kits, & great gift ideas

This event also coincides with EAA. On Thursday July 25th, our shop will vend at the 30th annual EAA Quilt Show sponsored by the Lakeside Quilter's Guild.

The show is held at the Oshkosh Sr Center North, 234 N Campbell Rd, Oshkosh. Stop in and say HI to Joanne and Mary!



Please note:

Our Thursday hours have been changed to 9:00am until 6:00 pm.
Beginning in October, we will again be open on Sundays

YOUR INSPIRATION DESTINATION QUILT SHOP

Over 5000 bolts of traditional to bright fabrics!
Over 2000 patterns!
More notions every day!
Classes!
Ideas!
250+ Samples!

STORE HOURS

Sunday (Oct-Apr)	12-3:00
Sunday (May-Sept)	Closed
Monday	9:00-5:30 pm
Tuesday	9:00-5:30 pm
Wednesday	9:00-5:30 pm
Thursday	9:00-6:00 pm
Friday	9:00-5:30 pm
Saturday	9:00-3:00 pm

E-mail:

goingtopiecesquiltcompany@yahoo.com

Website:

goingtopiecesquiltco.com

FACEBOOK: Like us to receive the latest store information. View pictures of our latest projects!



Tucker University

*Begins Oct 2019!
Watch for e-mail!*

Tucker University is a series of technique classes for the Studio 180 Design Tools and Techniques by Deb Tucker.

Tucker University is a new and exciting opportunity to help quilters build their skills and accuracy. Each class covers a different Studio 180 Design tool along with ways to expand the use of the tool. Students will make 4" finished units so that they can combine and create new blocks. The creativity is contagious!
Studio 180 Design Tools offer:

- Multiple sizes on every tool (one tool, many possibilities)
- Slightly oversized construction for precision trimming for precise unit sizes
- Left and Right handed cutting instructions
- Technique Sheets for additional technique options for each tool
- Free videos with the additional help for every tool and technique

Freshman Year (6 months)

1. Tucker Trimmer & Shaded Four Patch
2. V Block & Sidekick & High/Low
3. Wing Clipper I & Pickets & Quickets
4. Square-squared & Little Houses
5. Corner Beam & Sliver
6. Rapid Fire Lemoyne Star

Sophomore Year - Semester One

1. Birds of Paradise
2. Stacked Squares
3. Rapid Fire Hunter Star
4. Eight at Once/Non Mirror Combo Units
5. Four Patch Square Up
6. Geese on the Edge

Freshman Year (12 months)

1. Tucker Trimmer & Shaded Four Patch
2. V Block & Sidekick & High/Low
3. Wing Clipper I & Pickets & Quickets
4. Square-squared & Little Houses
5. Corner Beam & Sliver
6. Rapid Fire Lemoyne Star
7. Corner Pop
8. Split Rects
9. Diamond Rects
10. Large Square Squared
11. Rapid Fire Lemoyne Star - Advanced I: Strip Pieced, Liberty & Banded Lemoyne Star
12. Rapid Fire Lemoyne Star - Advanced II: Fussy Cut, Lemoyne as Triangles & Blazing Lemoyne Star
13. Free Bonus! Migrating Geese with a 1 year subscription.

Sophomore Year - Semester Two

Semester Two is the Tucker University School of Design. The curriculum will guide each quilter through their individual planning, the construction process and through the finishing stage of quilting and binding. The students will be able to choose a project from a Throw size to a King size quilt. 8 new design sheets in addition to 10 layout design options will provide the quilter with all the inspiration and direction that they need.

NEW: RED BAG SATURDAYS!!

*On the third Saturday of each month,
we have begun a new program called "Red Bag Saturday".*

*On these Saturdays,
surprise discounts are available to anyone with a
GOING TO PIECES REUSABLE RED BAG!!!*

Get yours today!

\$3.95



SOAP
is to the *Body* what
LAUGHTER
is to the *Soul*

We now carry "Logan Creek Soap", handmade in Door Co, WI. It lasts longer than factory made soap, is made from gentle, all natural oils, and does not dry out your skin. There are many fragrances, plus an acne soap, a shaving soap, even a stain soap (which has been tested by several employees with remarkable results). Free smells available!!

Missie Carpenter – Sept 19!

"I have loved being creative all my life and want to share some of my favorite things. "Traditional Primitives" is a place where you can find creative ideas to express yourself and be proud of your results!"

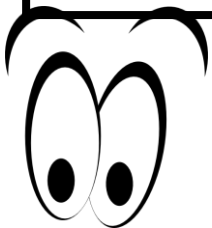
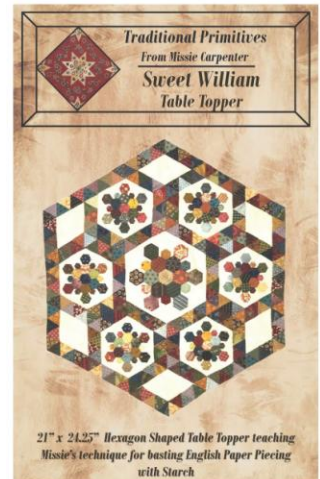


Missie Carpenter of Traditional Primitives is featured in the magazine, "Primitive Quilts and Projects" which we carry! (she is famous for her designs) including quilts, (a best seller shown on the left) pincushions, handbags & totes, and wool appliqué. Her patterns from Traditional Primitives are easy to follow and have detailed instructions. You can find your dream project, Primitive or Traditional, wool appliqué quilts, punchneedle, machine appliqué, English paper piecing, easy or more challenging quilts – traditional with a touch of primitive, all from Missie!



We are very proud to announce that Missie Carpenter will be at our shop on **Thursday, September 19th**, teaching a unique technique for English Paper Piecing, using starch and a few notions. This is your chance to learn from the best!!

- Class fee -** \$35.00
- Discounted kit -** \$65.00 *(Starch pen, Starch spray, her book, and papers needed)*
You will choose your own fabric.
- You will also need -** A Clover Mini Iron *(this is the only iron that will work for her process).* Available at our shop.
- SIGN UP NOW -** Calling our shop (920-882-6430) or stop in.



Watch for these classes coming in the Fall:

- ✓ Tucker University
- ✓ Heirloom Machine Quilting
- ✓ Christmas Ornaments



Remember, we are a "Project Linus" drop off site. This wonderful organization donates quilts to local police and fire departments for distribution, as well as to local hospitals, homeless shelters, etc. Donating your left over fabric (no matter how small) helps this dedicated group in their community effort to help those in need of comfort, security and warmth.

Block of the Month

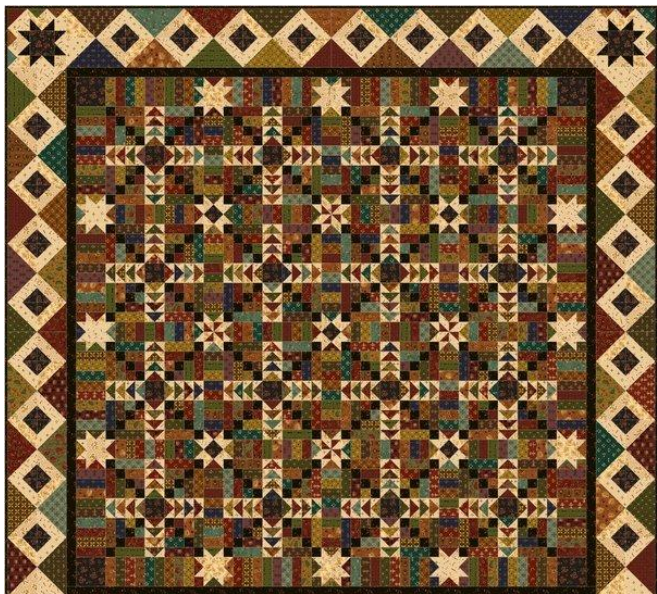
Geese on the Meadow

Take a walk through the meadow with Mary! Kim has designed another large project for your stitching needs and the work of gathering scrappy fabrics has been done for you!

Featuring Kim's newest fabric collection "Helping Hands", these fabrics blend beautifully together, and will spread joy for years to come.

This BOM began in February. Sign up now!

\$28.95 per month for 6 months.



66.5 x 66.5

Looking For a Portable, Reliable Sewing Machine??

We found this adorable machine, Sparrow 30, by Ever Sewn, at Market this past spring. During the demonstration, we were impressed that a machine this size and for this price includes (to name just a few of it's qualities):

Thread cutter button

Needle up/down position button

Mirror image button

Memory button

LCD screen

Many decorative stitches including numbers & script

Auto lock button

Speed limiting adjustment lever

Twin needle button

Stitch length & width adjustment buttons

As we tried the machine ourselves, we found it quiet, precise, easy to operate, light to carry. All of the gals who teach at GTP have been asked in class what we recommend for an inexpensive machine. So we brought this little work horse into the shop.

We do have one set up if you would like to try before purchase. Stop in and play!!

Cost: \$459.95

We are also including the accessory kit which regularly sells for \$39.95 (includes a walking foot, left and right quilting guide, snap on 1/4" foot with blade, 1/4" patchwork foot, free motion foot with large opening).



Customer Appreciation Day



Please join us on Friday, September 13th
as we thank you for your loyalty!



7:00 - 9:00 am - We will have a SPECIAL CLEARANCE!!

4:30 - 5:30 pm - We will have FINAL SURPRISE SALE SPECIALS!!

Kathy Keene will **BROADCAST** her morning talk show for WHBY from [Going to Pieces Quilt Co](#) - 10:30 until 12:30!!

Chefs from Fox Valley Tech will be cooking a **BARBEQUE** for our customers! Brats and hot dogs will be served from 11:00 until 1:00!! We will be able to serve 300 folks - We hope you are one of them!!

Sue Schmieden will be here from "[The Quilting Connection](#)" with the Amara Handiquilter Pro Stitcher Long Arm and the new Handiquilter sewing machines. It will be a great opportunity to try your hand at longarming. Anyone buying will get the same great "show pricing" Sue will give at the Madison show the previous weekend . Sue will give demonstrations and special show pricing on machines all day long!!

Lori Kabat will be here to talk about her newest venture and our newest addition, "[Logan Creek Soaps](#)". They smell awesome, are good for the environment, and work!



Classes

CLASS NOTES:

Please come prepared. Read your pattern, if applicable, and jot down questions. We suggest you bring along basic sewing supplies:

Notebook, pen, scissors, pins, thread, appropriate ruler for your project, rotary cutter.

If your class requires a sewing machine, please make sure you are familiar with the mechanics of the machine, and be sure it is in good working condition. Bring your manual, just in case ☺ Please arrive 20- 30 minutes prior to start time and be ready to go!

POLICIES:

All classes must be paid for at the time of sign up. Should you decide to cancel before the class, you will receive an in- store credit. If the class is cancelled due to low attendance, you will receive your choice of either an in-store credit or full refund. We try to never cancel a class but sometimes this is beyond our control. **Thank you!**

BEGINNING PAPER PIECING

Thursday, August 1 – 5-8:00 pm

We will be piecing your choice of 8" star blocks which you can finish off as a potholder or mug rug! Join Joanne and learn a new sewing technique or renew your interest in this fun and easy way to make perfect points, perfect seams and perfect sewing art!



Class - \$25.00 which includes kit.

YELLOW BRICK ROAD

Tuesday, August 13 – 10-3:00

Tuesday, August 20 – 10-3:00

A two day quilting class for beginners!

Grab a handful of fat quarters and you're on the road to a fun quilt! Don't know what a fat quarter is? Haven't learned the correct way of squaring, measuring, cutting, piecing, and pressing your fabric? Learn these techniques and more from Mary in this beginner class!

Class - \$40.00



YELLOW BRICK ROAD

is a versatile pattern. Any combination of colors and fabrics work. Every quilt looks beautiful and entirely different!

BEGINNING FUSIBLE MACHINE APPLIQUE

Wednesday, September 26 - 5-8:00 pm

Joanne will show you how appliqué can add a great deal of interest to your quilt or project. This beginner class is for those who would like to learn about the world of appliqué! We will be appliqueing a towel to decorate your home or give as a gift.



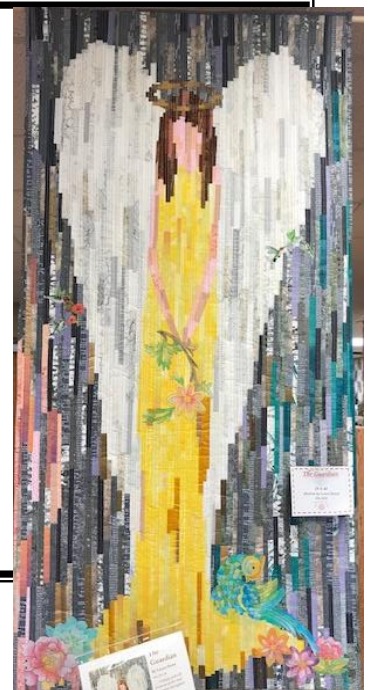
Class - \$30.00 (pattern and kit included in fee)

"THE GUARDIAN" ANGEL COLLAGE

Wed, Sept 18 - 9-1:00 pm

Using the pattern "The Guardian" by Laura Heine and the expertise of Kathy, our resident "artist", you too can recreate this absolutely stunning collage. This beautiful sample is hanging in our shop and ready to be an inspiration as you create your own angel.

Class - \$20.00





Stonehenge 10 year Anniversary Challenge!

GTP is an official "Northcott Quilt Shop". We are proud to announce that we have agreed to participate in the "Northcott Stonehenge 10 Year Anniversary Challenge"!! That means we have the entire "Solstice" collection from Stonehenge. It also means we will be participating in their 10 year anniversary challenge. What does that mean for you? A chance to win BIG! From Northcott!!

One of the challenges is for our customers to create a masterpiece using this panel and other Stonehenge fabrics. This challenge is taking place in the USA and Canada. Our shop will create an original block. All participating shops will design their own original block. A list of participating shops can be found on line.

Kits for our block are available for purchase. Customers can collect these block kits to make a quilt. They can order from us (or any other shop) and kits will be mailed. Winners of an original design can win a trip for two to Stonehenge in England or \$1000.00! There are more cash prizes, as well.

So get those creative juices flowing! Our shop will keep the entire "Solstice" line available for the duration of the challenge (until December, 2019).

Classes

JELLY ROLL RUG CLASS

Class 1 (day class) Aug 21 (10-1) & Sept 4 (10-1)
OR
Class 2 (evening): Aug 27 (5-8) & Sept 10 (5-8)

TWO separate classes, each runs TWO days.

Join Wendy and make a rug!! The sample shown at right is Wendy's finished product. Stunning! Your rug will be made of 42 2 1/2" fabric strips (this is called a JELLY ROLL) and 100% cotton batting. You will be using "Bosal Strip Batting". This is sure to be a fun class that filled up FAST last time.



Class: \$25.00

MONDO BAG

Thursday, Aug 22 and Sept 5 - 5-8:00 pm

Join Joanne and make one of our most popular bags. Using "Quilt Smart", this 2 day class will teach you to sew perfect seams, creating a bag you will love! We have a sample in the shop.



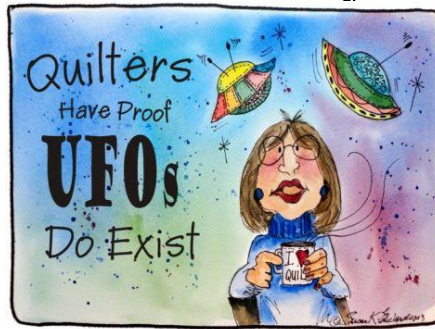
Class - \$25.00

She who dies
with the
most fabric
WINS

Our Clubs are Open to All

UFO Club

Tackle that quilting bucket list! Join Joanne as you chip away at those projects. This 12-month club meets the first Tuesday of the month and begins with a \$5 membership fee to the kitty.



Each month, members hand in a list of projects they hope to accomplish. Completed projects are brought in the next month for show and tell. If you didn't finish, you pay \$5 per unfinished project to the kitty.

All money in the kitty will be turned into gift cards to be given to winners drawn at the Oct meeting. JOIN US!!

July 2 – August 6 – September 3

Open Sew Tuesdays

July 2, 16, 30

August 6, 27

September 3, 17

9:00 until 4:30 pm

We will host OPEN SEW TUESDAYS for those that need to get projects done, those that have other projects, and those who just like to sew and meet new friends.

Each month, members hand in a list of projects they hope to accomplish. Completed projects are brought in the next month for show and tell. If you didn't finish, you pay \$5 per unfinished project to the kitty.

All money in the kitty will be turned into gift cards to be given to winners drawn at the Oct meeting. JOIN US!!

July 2 – August 6 – September 3

Sew Pieceful Fridays

Join us for "Sew Pieceful Friday" during our open hours (9:00 am to 5:00 pm) and start out your weekend right. Relax with your friends and/or make new friends! Start those new projects or finish those UFO's.

Thimble Thursdays

Grab your hand projects ... then head on over for a day of sewing, friendship and LOTS of laughs! You never know what tips you are going to pick up and what projects you just may complete. This is a popular event with embroidery and handwork groups, so come see what all the excitement is about!

The BS Club

Bagels and Stitching!!! Come to stitch with us and enjoy a little snack. Stay a couple of hours or all day long! Call us ahead of time to reserve your spot! This has become quite a popular club – but there is always room for more!! Why don't you give it a try??

Wednesdays:

July 10 – August 14 – September 11

Vintage Christmas Club

THE LORI HOLT VINTAGE CHRISTMAS CLUB began in May. The projects are awesome and we have the entire Christmas line. You can still be a part of this new club! Commit to completing your projects and you will be entered to win up to a \$50 gift card!! How much better can it get??

Please call the shop ASAP if you want to join. We want to make sure every club member gets as much fabric as they want. We have her book in stock. Stop in to purchase your book, then decide what project(s) you wish to do and how much and which fabric you want. A 10% discount applies to your purchase thru July only so make sure you get everything you want! The fabric is EXCLUSIVE to club members until the end of July. Members are welcome to sew together at our shop on "Vintage Christmas Mondays".

Whatnots Club 8


Henry Glass fabrics and Kim Diehl have teamed up to bring you Simple Whatnots – a "quilt shops only" club featuring exclusive quilt and project designs stitched entirely from Kim's collection of fabrics. Cost will vary, depending on the month's project.

Only full kits are available (all 8 patterns & fabrics).

July 2019

Sunday	Monday	Tuesday	Wednesday	Thursday	Friday	Saturday
	1 ~Sr Quilter's Day ~Mary's Vintage Xmas Club 10-4:00	2 ~UFO Club 10-11 am ~OPEN SEW TUES 10-4	3	4 CLOSED 	5 ~Sew Pieceful Friday	6
7 CLOSED	8 ~Mary's Vintage Xmas Club 10-4:00	9	10 ~BS Club	11 ~Thimble Thurs	12 ~Sew Pieceful Friday	13
14 CLOSED	15 ~Mary's Vintage Xmas Club 10-4:00	16 ~OPEN SEW TUES 10-4	17	18 ~Thimble Thurs	19 ~Sew Pieceful Friday	20 RED BAG SATURDAY
21 CLOSED	22 ~Mary's Vintage Xmas Club 10-4:00	23	24	25 ~Thimble Thurs ~EAA Quilt Show	26 ~Sew Pieceful Friday	27
 Christmas in July 						
28 CLOSED	29 ~Mary's Vintage Xmas Club 10-4:00	30 ~OPEN SEW TUES 10-4	31			

August 2019

Sunday	Monday	Tuesday	Wednesday	Thursday	Friday	Saturday
				1 ~Thimble Thurs ~Beginning Paper Piecing 5-8	2 ~Sew Pieceful Friday	3
4 CLOSED	5 ~Sr Quilter's Day ~Mary's Vintage Xmas Club 10-4:00	6 ~UFO Club 10-11 am ~OPEN SEW TUES 10-4	7	8 ~Thimble Thurs	9 ~Sew Pieceful Friday	10
11 CLOSED	12 ~Mary's Vintage Xmas Club 10-4:00	13 Beginning Quilting 1 of 2 10-3:00	14 ~BS Club	15 ~Thimble Thurs	16 ~Sew Pieceful Friday	17 RED BAG SATURDAY
18 CLOSED	19 ~Mary's Vintage Xmas Club 10-4:00	20 Beginning Quilting 2 of 2 10-3:00	21 ~Rug Class (part 1 day class) 10-1	22 ~Thimble Thurs ~Mondo Bag (part 1) 5-8	23 ~Sew Pieceful Friday	24
25 CLOSED	26 ~Mary's Vintage Xmas Club 10-4:00	27 ~OPEN SEW TUES 10-4 ~Rug Class (part 1 night class) 5-8	28	29 ~Thimble Thurs	30 ~Sew Pieceful Friday	31

September 2019

Sunday	Monday	Tuesday	Wednesday	Thursday	Friday	Saturday	
1 CLOSED	2 CLOSED	3 ~UFO Club 10-11:00 am ~OPEN SEW TUES 10-4	4 ~Rug Class (Part 2 day class) 10-1	5 ~Thimble Thurs ~Mondo Bag (part 2) 5-8	6 ~Sew Pieceful Friday	7	
8 CLOSED	9 ~Sr Quilters Day ~Mary's Vintage Xmas Club 10-4:00	10 ~Rug Class (part 2 night class) 5-8	11 ~BS Club	12 ~Thimble Thurs	13 ~CUSTOMER APPRECIATION DAY!!! 	14	
15 CLOSED	16 ~Mary's Vintage Xmas Club 10-4:00	17 ~OPEN SEW TUES 10-4	18 ~The Guardian (angel) class 9-1	19 Missie Carpenter Class	20 ~Sew Pieceful Friday	21 RED BAG SATURDAY	
22 CLOSED	23 ~Mary's Vintage Xmas Club 10-4:00	24	25	26 ~Thimble Thurs ~Beg Fusible Machine Applique 5-8	27 ~Sew Pieceful Friday	28	
29 CLOSED	30 ~Mary's Vintage Xmas Club 10-4:00	Beginning in Oct, we will again be open on Sundays!					

