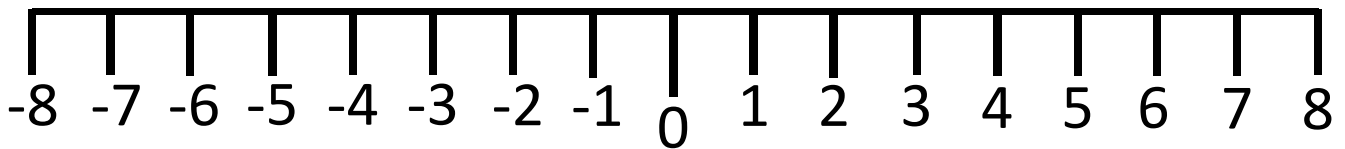


Negative Numbers – Addition & Subtraction.

Use the number line to solve the addition and subtraction problems.



$$-4 + 2 = \square$$

$$-7 + 3 = \square$$

$$-8 + 4 = \square$$

$$-5 + 5 = \square$$

$$-3 + 5 = \square$$

$$-1 + 5 = \square$$

$$-6 + 8 = \square$$

$$-2 + 7 = \square$$

$$-4 + 10 = \square$$

$$-5 + 12 = \square$$

$$-7 + 11 = \square$$

$$-8 + 16 = \square$$

$$0 - 5 = \square$$

$$-1 - 2 = \square$$

$$-3 - 4 = \square$$

$$-4 - 4 = \square$$

$$1 - 5 = \square$$

$$3 - 6 = \square$$

$$5 - 7 = \square$$

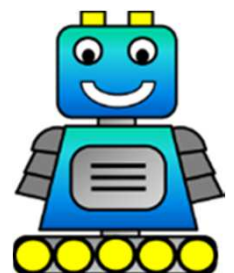
$$6 - 9 = \square$$

$$4 - 10 = \square$$

$$3 - 11 = \square$$

$$7 - 12 = \square$$

$$8 - 14 = \square$$



Optional: Robot counters to use with the number line.

