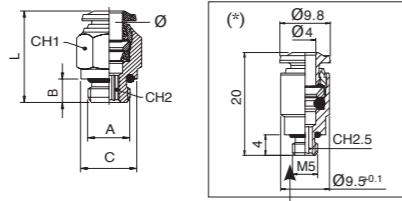


Straight male adaptor(parallel)

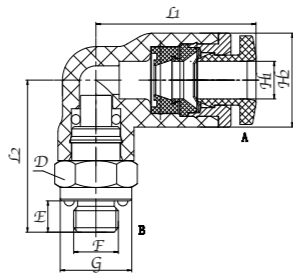


Technical characteristics

T=-20° ÷ +80° C
P=-0.99 ÷ +15bar

Model	Φ	A	B	C	L	CH1	CH2	n°	m
AP.5002000N01	(*)	(*)	(*)	(*)	(*)	(*)	(*)	10	45
AP.5002000N02	4	1/8	6	13	20	10	3	10	70
AP.5002000N22	4	1/4	8	16	19.5	16	3	10	160
AP.5002000N20	6	M5	4	10	24.5	13	2	10	110
AP.5002000N03	6	1/8	6	13	23.5	13	4	10	125
AP.5002000N04	6	1/4	8	16	23.5	13	4	10	170
AP.5002000N05	8	1/8	6	13	25	14	5	10	130
AP.5002000N06	8	1/4	8	16	23	14	6	10	130

PL

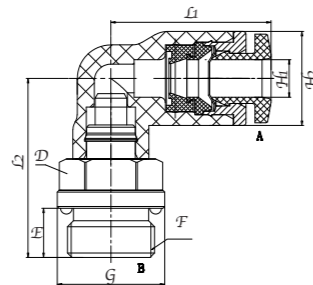


Technical characteristics

T=-20° ÷ +80° C
P=-0.99 ÷ +15bar

Model	L1	L2	D	E	F	G	H1	H2
PL4	17.9	17	S8	3.5	M5x0.8	Φ8.0	Φ4.2	Φ10.5
PL6	20.05	17	S8	3.5	M5x0.8	Φ8.0	Φ6.2	Φ12.5

GPL-G01

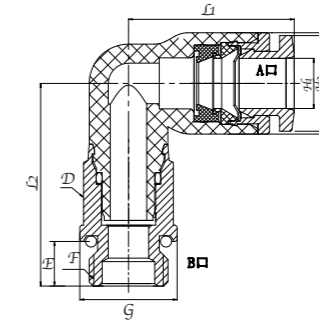


Technical characteristics

T=-20° ÷ +80° C
P=-0.99 ÷ +15bar

Model	L1	L2	D	E	F	G	H1	H2	H3
GPL4-G01	17.9	20	S10	5.5	G1/8-25	Φ12	Φ4.2	Φ9.8	Φ10.5

GPL-G01

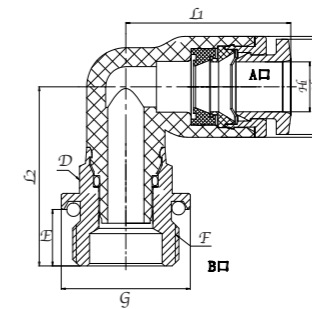


Technical characteristics

T=-20° ÷ +80° C
P=-0.99 ÷ +15bar

Model	L1	L2	D	E	F	G	H1	H2	H3
GPL6-G01	20.45	25	S10	5.5	G1/8-25	Φ12	Φ6.2	Φ11.8	Φ12.5
GPL8-G01	23.3	25.5	S12	5.5	G1/8-25	Φ12	Φ8.2	Φ14	Φ14

GPL-G02

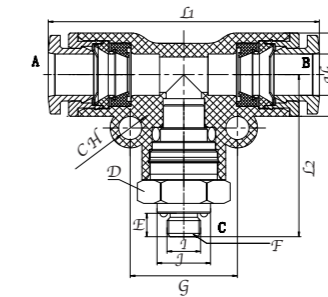


Technical characteristics

T=-20° ÷ +80° C
P=-0.99 ÷ +15bar

Model	L1	L2	D	E	F	G	H1	H2	H3
GPL6-G01	20.45	22.2	S10	7	G1/4-19	Φ16	Φ6.2	Φ11.8	Φ12.5
GPL8-G01	23.3	24.2	S12	7	G1/4-19	Φ16	Φ8.2	Φ14	Φ14

PB-M5

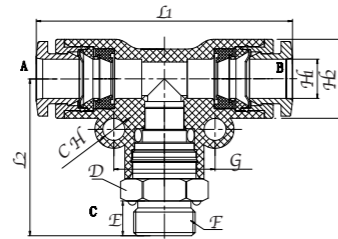


Technical characteristics

T=-20° ÷ +80° C
P=-0.99 ÷ +15bar

Model	L1	L2	CH	D	E	F	G	H1	H2	I	J
PB4-M5	35.8	21.7	Φ3.2	S10	3.5	M5X0.8	14	Φ4.2	Φ10.5	Φ8	Φ14
PB6-M5	40.5	24.3	Φ3.2	S12	3.5	M5X0.8	16	Φ6.2	Φ12.5	Φ8	Φ16

PB-G01

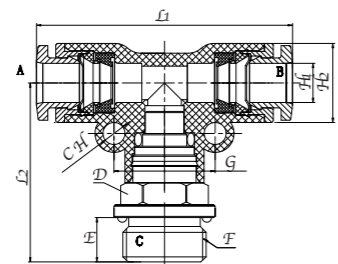


Technical characteristics

T=-20° ÷ +80° C
P= -0.99 ÷ +15bar

Model	L1	L2	CH	D	E	F	G	H1	H2
PB6-G01	40.5	24.8	Φ3.2	S12	5.5	G1/8-28	16	Φ6.2	Φ12.5
PB8-G01	47	29	Φ3.3	S14	5.5	G1/8-28	18	Φ8.2	Φ14

PB-G02

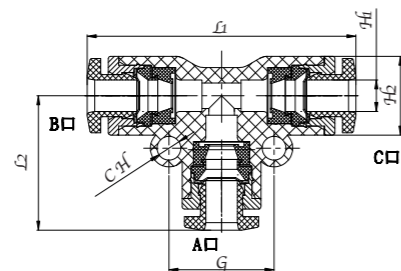


Technical characteristics

T=-20° ÷ +80° C
P= -0.99 ÷ +15bar

Model	L1	L2	CH	D	E	F	G	H1	H2
PB6-G02	40.5	28	Φ3.2	S12	7	G1/4-19	16	Φ6.2	Φ12.5
PB8-G02	47	31	Φ3.3	S14	7	G1/4-19	18	Φ8.2	Φ14

PE

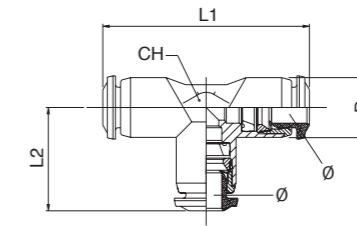


Technical characteristics

T=-20° ÷ +80° C
P= -0.99 ÷ +15bar

Model	L1	L2	CH	G	H1	H2
PE4	35.8	17.9	Φ3.2	14	Φ4.2	Φ14
PE6	40.5	20.2	Φ3.2	16	Φ6.2	Φ16
PE8	47	23.5	Φ3.3	18	Φ8.2	Φ18

T connector

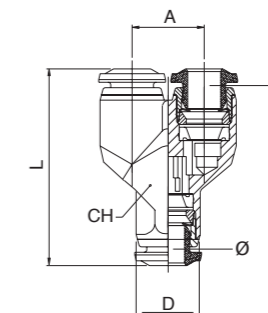


Technical characteristics

T=-20° ÷ +80° C
P= -0.99 ÷ +15bar

Model	Φ	L1	L2	CH	D	n°	m
AP.5523000002	4	33	16.5	9	10	10	55
AP.5523000004	6	41	20.5	11	12	10	80
AP.5523000005	8	44	22	13	14	10	105

Yconnector

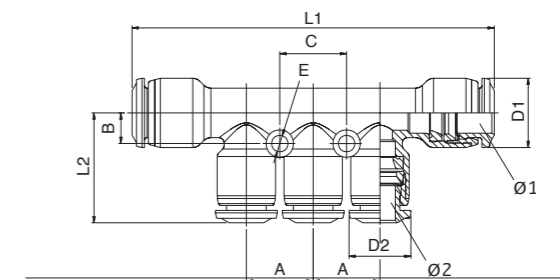


Technical characteristics

T=-20° ÷ +80° C
P= -0.99 ÷ +15bar

Model	Φ	A	L	CH	D	n°	m
AP.5531000002	4	11	31.5	10	10	10	55
AP.5531000004	6	13.5	37	12	12	10	55
AP.5531000005	8	15.5	40	14	14	10	65

Reduction manifold

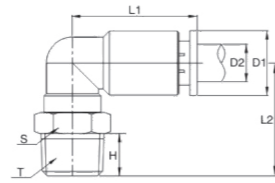


Technical characteristics

T=-20° ÷ +80° C
P= -0.99 ÷ +15bar

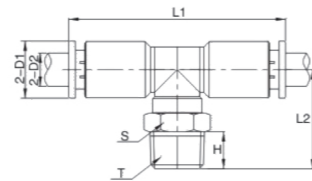
Model	Φ1-Φ2	A	B	L1	L2	C	D1	D2	E	n°	m
AP.5535000002	6-4	13.5	6	74	21.8	13.5	14	12	3.3	10	170
AP.5535000004	8-4	13.5	6	73	21.8	13.5	14	12	3.3	10	160
AP.5535000005	8-6	13.5	6	73	22.3	13.5	14	12.5	3.3	10	160

Metal maleelbow



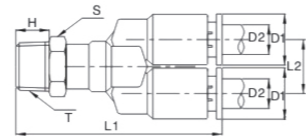
Model	D2 Tube	L1	L2	H	S	T	D1
TKC-PL4-M5	Φ4	17.5	18	3.6	8	M5	Φ8
TKC-PL6-M5	Φ6	23	19	3.6	10	M5	Φ12
TKC-PL6-01	Φ6	23	22	7	10	R1/8	Φ12
TKC-PL8-M5	Φ8	25.5	21	3.6	12	M5	Φ14
TKC-PL8-01	Φ8	25.5	23	7	12	R1/8	Φ14
TKC-PL8-02	Φ8	25.5	25	9	14	R1/4	Φ14
TKC-PL10-01	Φ10	30	24	7	14	R1/8	Φ16
TKC-PL10-02	Φ10	30	26	9	14	R1/4	Φ16
TKC-PL10-03	Φ10	30	28	9.5	17	R3/8	Φ16
TKC-PL12-02	Φ12	31.5	29.5	9	17	R1/4	Φ18
TKC-PL12-03	Φ12	31.5	30	9.5	17	R3/8	Φ18

Metal T branch



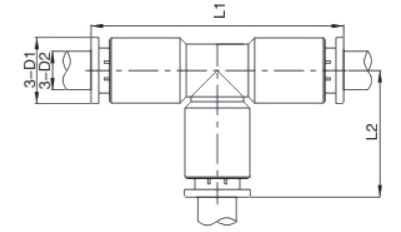
Model	D2 Tube	L1	L2	H	S	T	D1
TKC-PB4-M5	Φ4	35	18	3.6	8	M5	Φ8
TKC-PB4-01	Φ4	35	19.5	7	10	R1/8	Φ8
TKC-PB6-M5	Φ6	46	19	3.6	10	M5	Φ12
TKC-PB6-01	Φ6	46	22	7	10	R1/8	Φ12
TKC-PB8-01	Φ8	51	23	7	12	R1/8	Φ14
TKC-PB8-02	Φ8	51	25	9	14	R1/4	Φ14

Metal Y



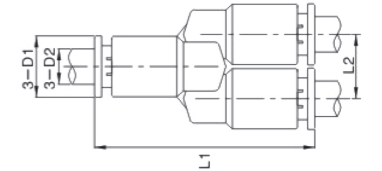
Model	D2 Tube	L	L1	S	T	M	D1
TKC-PX4-M5	Φ4	34	8.6	8	M5	3.6	Φ8
TKC-PX6-M5	Φ6	37	12.6	10	M5	3.6	Φ12
TKC-PX6-01	Φ6	39	12.6	10	Rc1/8	7	Φ12
TKC-PX8-01	Φ8	49	14.5	12	Rc1/8	7	Φ14
TKC-PX8-02	Φ8	51	14.5	14	Rc1/4	9	Φ14
TKC-PX8-03	Φ8	52	14.5	17	Rc3/8	9.5	Φ14

Brass unionT



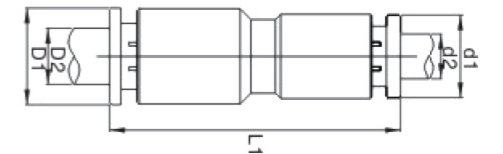
Model	D2 Tube	L1	S1	H	S
TKC-PE4	Φ4	35	17.5	17.5	Φ8
TKC-PE6	Φ6	46	23	23	Φ12
TKC-PE6	Φ8	52	25.5	25.5	Φ14
TKC-PE10	Φ10	60	30	30	Φ16
TKC-PE12	Φ12	63	31.5	31.5	Φ18

Yunion



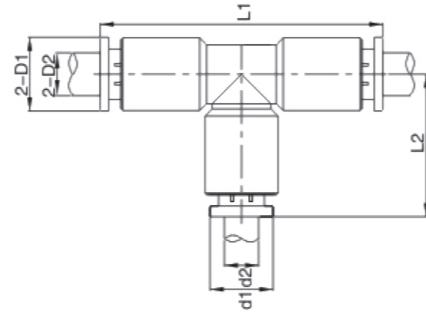
Model	D2 Tube	L1	L2	D1
TKC-PY-4	Φ4	33	8.6	Φ8
TKC-PY-6	Φ6	40	12.6	Φ10
TKC-PY-8	Φ8	48	14.5	Φ12
TKC-PY-10	Φ10	50	17	Φ14
TKC-PY-12	Φ12	56	20	Φ16

unionstraight reducer



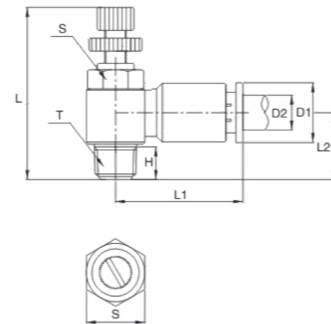
Model	D2 Tube	D2 气管 Tube	L1	L2	L2
TKC-PG6-4	Φ4	Φ6	34	Φ12	Φ8
TKC-PG8-4	Φ4	Φ8	36	Φ14	Φ8
TKC-PG8-6	Φ6	Φ8	39.5	Φ14	Φ12
TKC-PG10-4	Φ4	Φ10	38.5	Φ16	Φ8
TKC-PG10-6	Φ6	Φ10	40	Φ16	Φ12
TKC-PG10-8	Φ8	Φ10	43.5	Φ16	Φ14
TKC-PG12-10	Φ10	Φ12	44.5	Φ18	Φ16

T Brass reducer



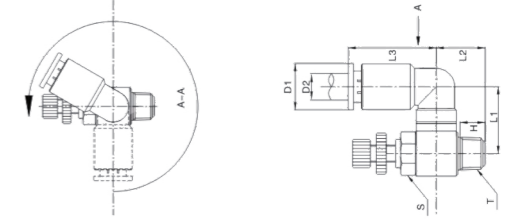
Model	D2 Tube	d2 气管 Tube	L1	L2	D1	D2
TKC-PEG6-4-6	Φ6	Φ4	46	18	Φ12	Φ8
TKC-PEG8-4-8	Φ8	Φ4	51	20.5	Φ14	Φ8
TKC-PEG8-6-8	Φ8	Φ6	51	23.5	Φ14	Φ12
TKC-PEG10-4-10	Φ10	Φ4	60	22.5	Φ16	Φ8
TKC-PEG10-6-10	Φ10	Φ6	60	21	Φ16	Φ12
TKC-PEG10-8-10	Φ10	Φ8	60	26	Φ16	Φ14
TKC-PEG4-6-4	Φ4	Φ6	44	19	Φ12	Φ8
TKC-PEG4-8-4	Φ4	Φ8	41	25.5	Φ14	Φ8
TKC-PEG6-8-6	Φ6	Φ8	48	25.5	Φ14	Φ12
TKC-PEG4-10-4	Φ4	Φ10	45	29	Φ16	Φ8
TKC-PEG6-10-6	Φ6	Φ10	48	29	Φ16	Φ12
TKC-PEG8-10-8	Φ8	Φ10	52	29	Φ16	Φ14

Elbow speed controller



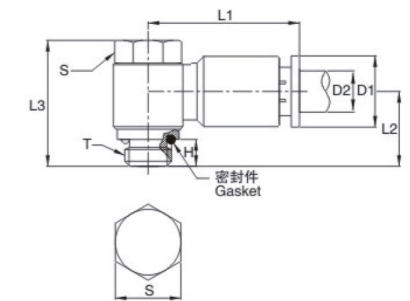
Model	D2 Tube	L	L1	L2	H	S	T	D1
TKC-SL4-M5	Φ4	30.5	18	10	3.6	8	M5	Φ8
TKC-SL4-01	Φ4	37.5	21	15	7	12	R1/8	Φ10
TKC-SL6-M5	Φ6	30.5	21	11	3.6	8	M5	Φ12
TKC-SL6-01	Φ6	37.5	23	15	7	12	R1/8	Φ12
TKC-SL8-01	Φ8	37.5	25	15	7	12	R1/8	Φ14
TKC-SL8-02	Φ8	43	26	18	9	15	R1/4	Φ14
TKC-SL8-03	Φ8	57	28	20	9.5	19	R3/8	Φ14
TKC-SL10-01	Φ10	37.5	27	16	7	12	R1/8	Φ16
TKC-SL10-02	Φ10	43	28	19	9	15	R1/4	Φ16
TKC-SL10-03	Φ10	57	30	20	9.5	19	R3/8	Φ16

Universal speedcontroller



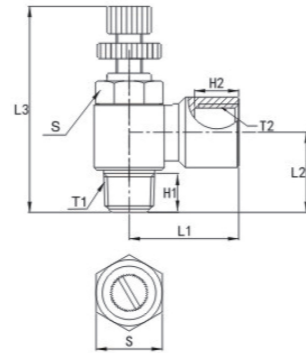
Model	D2 Tube	L1	L2	L3	S	H	T	D1
TKC-SLL4-M5	Φ4	17	10	17.5	9	3.6	M5	Φ8
TKC-SLL4-01	Φ4	13	15	17.5	14	7	1/8	Φ8
TKC-SLL6-M5	Φ6	19	11	23	9	3.6	M5	Φ12
TKC-SLL6-01	Φ6	21	15	23	14	7	1/8	Φ12
TKC-SLL8-01	Φ8	22	15	25.5	14	7	1/8	Φ14
TKC-SLL8-02	Φ8	24	16	25.5	17	9	1/4	Φ14
TKC-SLL8-03	Φ8	25	20	25.5	21	9.5	3/8	Φ14
TKC-SLL10-01	Φ10	26	15	30	14	7	1/8	Φ16
TKC-SLL10-02	Φ10	25	18	30	17	9	1/4	Φ16
TKC-SLL10-03	Φ10	28	20	30	21	9.5	3/8	Φ16

Universalelbow



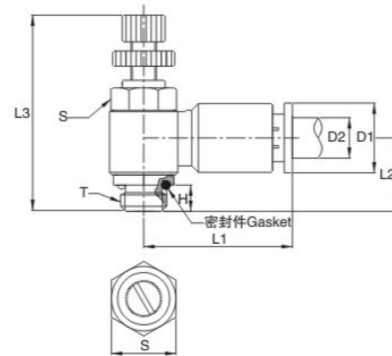
Model	D2 Tube	L1	L2	L3	S	H	T	D1
TKC-PH6-01G	ø6	23	15	24.5	5	G1/8	14	ø12
TKC-PH6-02G		24	18	27	7	G1/4	16	
TKC-PH6-03G		26	20	32	7.5	G3/8	21	
TKC-PH6-04G	ø8	28	22.5	35	9	G1/2	24	ø14
TKC-PH8-01G		24.5	15	24.5	5	G1/8	14	
TKC-PH8-02G		25.5	18	27	7	G1/2	16	
TKC-PH8-03G	ø8	27.5	20	32	7.5	G3/8	21	ø14
TKC-PH8-04G		30	22.5	35	9	G1/2	24	
TKC-PH10-01G	ø10	26.5	16	24.5	5	G1/8	14	ø16
TKC-PH10-02G		27.5	19	27	7	G1/4	16	
TKC-PH10-03G		29.5	20	32	7.5	G3/8	21	
TKC-PH10-04G		29.5	22.5	35	9	G1/2	24	

Female speed controller



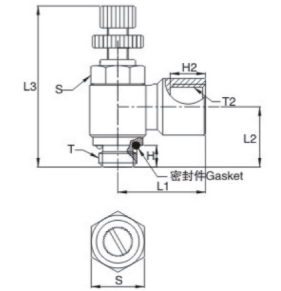
Model	T2 Tread	L1	L2	L3	H1	H2	S	T1
TKC-SLF M5-M5	M5	12	10	35.5	3.6	5	8	M5
TKC-SLF 1/8-01	G1/8	20	15	37.5	7	8	12	R1/8
TKC-SLF 1/8-02	G1/8	25	19	43	9	8	15	R1/4
TKC-SLF 1/4-01	G1/4	25	19	37.5	7	9.5	12	R1/8
TKC-SLF 1/4-02	G1/4	25	19	43	9	9.5	15	R1/4
TKC-SLF 1/4-03	G1/4	26	20	57	9.5	10.5	19	R3/8

Elbow speed controller



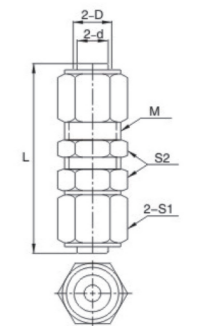
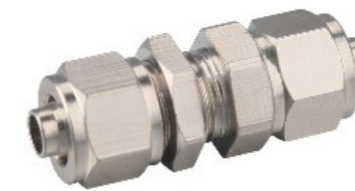
Model	D2 Tube	L3	L1	L2	H	T	S	D1
TKC-SL6-01G	ø6	35.5	23	15	5	G1/8	14	ø12
TKC-SL6-02G	ø6	41	24	18	7.0	G1/4	16	ø12
TKC-SL6-03G	ø6	54	26	20	7.5	G3/8	21	ø12
TKC-SL6-04G	ø6	57	28	22.5	9	G1/2	24	ø12
TKC-SL8-01G	ø8	35.5	24.5	15	5	G1/8	14	ø14
TKC-SL8-02G	ø8	41	25.5	18	7.0	G1/2	16	ø14
TKC-SL8-03G	ø8	54	27.5	20	7.5	G3/8	21	ø14
TKC-SL8-04G	ø8	57	30	22.5	9	G1/2	24	ø14
TKC-SL10-01G	ø10	35.5	26.5	16	5	G1/8	14	ø16
TKC-SL10-02G	ø10	41	27.5	19	7.0	G1/4	16	ø16
TKC-SL10-03G	ø10	54	29.5	20	7.5	G3/8	21	ø16
TKC-SL10-04G	ø10	57	29.5	22.5	9	G1/2	24	ø16

Female speed controller



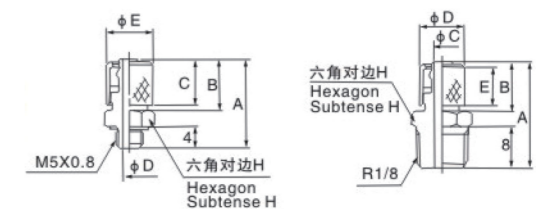
Model	L1	L2	L3	H	T	T2	S	H2
TKC-SLF M5-M5	12	10	30.5	3.6	M5	M5	8	5
TKC-SLF 1/8-01G	20	15	35.5	7	G1/8	G1/8	14	8
TKC-SLF 1/8-02G	25	19	41	9	G1/4	G1/8	16	8
TKC-SLF 1/4-01G	25	19	35.5	7	G1/8	G1/4	16	9.5
TKC-SLF 1/4-02G	25	19	41	9	G1/4	G1/4	16	9.5
TKC-SLF 1/4-03G	26	20	54	9.5	G3/8	G1/4	19	9.5

Bulk head Pushon straight



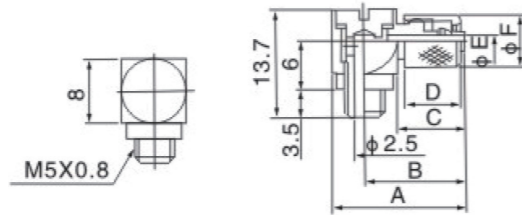
Model	Tube	L	S1	S	D×d(a)	M
TKN-PM6	ø6	36	10	12	6×ø4	8
TKN-PM8	ø8	43	14	14	8×ø5	11
TKN-PM10	ø10	45	15	17	10×ø6.5	13

Mini pushon connector



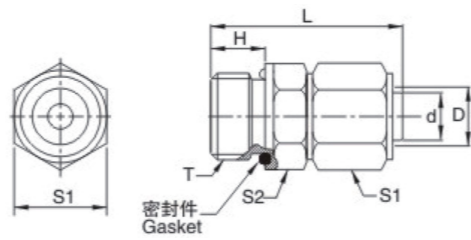
Model	A	B	C	D	E	H
TKN-PC4-M5-C	15.5	8.5	7	1.8	6.5	7
TKN-PC6-M5-C	16.5	9.5	8	2.5	8.5	8
TKN-PC4-01-C	19.5	8.5	7	1.8	6.7	10
TKN-PC6-01-C	20.5	9.5	8	3	8.5	10

Elbow Mini pushon connector



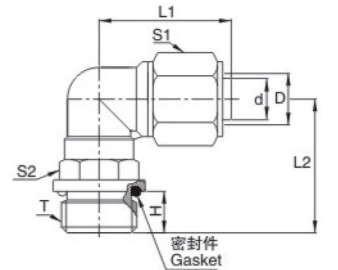
Model	A	B	C	D	E	H
TKN-PL4-M5-C	16.5	12.5	8.5	7	1.8	6.5
TKN-PL6-M5-C	17.5	13.5	9.5	8	2.5	8.5

Pushon male straight



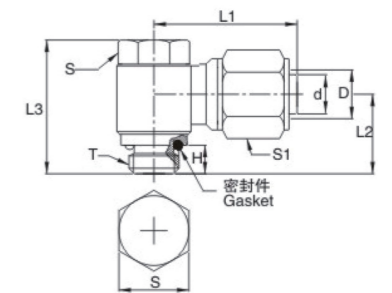
Model	Tube	L	H	T	S1	S2	Dxd
TKN-PC6-01G	ø6	20	5	G1/8	10	12	6×4
TKN-PC6-02G	ø6	22	7	G1/4	10	16	6×4
TKN-PC6-03G	ø6	20.5	7.5	G3/8	10	19	6×4
TKN-PC6-04G	ø6	26	9	G1/2	10	24	6×4
TKN-PC8-01G	ø8	24.5	5	G1/8	13	12	8×5
TKN-PC8-02G	ø8	26.5	7	G1/4	13	16	8×5
TKN-PC8-03G	ø8	27	7.5	G3/8	13	19	8×5
TKN-PC8-04G	ø8	28	9	G1/2	13	24	8×5
TKN-PC10-01G	ø10	25	5	G1/8	15	12	10×6.5
TKN-PC10-02G	ø10	27	7	G1/4	15	16	10×6.5
TKN-PC10-03G	ø10	27.5	7.5	G3/8	15	19	10×6.5
TKN-PC10-04G	ø10	29	9	G1/2	15	24	10×6.5

Pushon male elbow



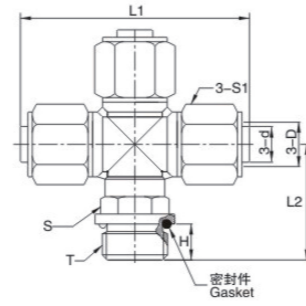
Model	Tube	L1	L2	H	T	S1	S2	Dxd
TKN-PL6-01G	ø6	19	18.5	5	G1/8	10	12	6×4
TKN-PL6-02G	ø6	19	20.5	7	G1/4	10	16	6×4
TKN-PL6-03G	ø6	19	21	7.5	G3/8	10	19	6×4
TKN-PL6-04G	ø6	19	23	9	G1/2	10	24	6×4
TKN-PL8-01G	ø8	23	19	5	G1/8	13	12	8×5
TKN-PL8-02G	ø8	23	21	7	G1/4	13	16	8×5
TKN-PL8-03G	ø8	23	21.5	7.5	G3/8	13	19	8×5
TKN-PL8-04G	ø8	23	23.5	9	G1/2	13	24	8×5
TKN-PL10-01G	ø10	25	23	5	G1/8	15	12	10×6.5
TKN-PL10-02G	ø10	25	25	7	G1/4	15	16	10×6.5
TKN-PL10-03G	ø10	25	25.5	7.5	G3/8	15	19	10×6.5
TKN-PL10-04G	ø10	25	27.5	9	G1/2	15	24	10×6.5

Pushon universal elbow



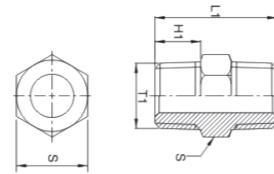
Model	Tube	L1	L2	L3	H	T	S1	Dxd
TKN-PH6-01G	ø6	22.5	15	24.5	5	G1/8	10	6×4
TKN-PH6-02G	ø6	23.5	18	27	7	G1/4	10	6×4
TKN-PH6-03G	ø6	25.5	20	32	7.5	G3/8	10	6×4
TKN-PH6-04G	ø6	27.5	22.5	35	9	G1/2	10	6×4
TKN-PH8-01G	ø8	26.6	15	24.5	5	G1/8	13	8×5
TKN-PH8-02G	ø8	27.6	18	27	7	G1/4	13	8×5
TKN-PH8-03G	ø8	29.6	20	32	7.5	G3/8	13	8×5
TKN-PH8-04G	ø8	31.6	22.5	35	9	G1/2	13	8×5
TKN-PH10-01G	ø10	27	15	24.5	5	G1/8	15	10×6.5
TKN-PH10-02G	ø10	28	18	27	7	G1/4	15	10×6.5
TKN-PH10-03G	ø10	30	20	32	7.5	G3/8	15	10×6.5
TKN-PH10-04G	ø10	32	22.5	35	9	G1/2	15	10×6.5

四通中部螺纹接头 PushonbranchCross



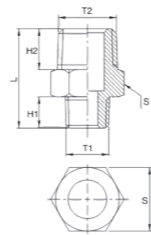
Model	Tube	L1	L2	L3	H	T	S1	Dxd
TKN-PZR6-01G	ø6	38	18.5	5	G1/8	10	12	6x4
TKN-PZR6-02G	ø6	39	20.5	7	G1/4	10	16	6x4
TKN-PZR6-03G	ø6	40	21	7.5	G3/8	10	19	6x4
TKN-PZR6-04G	ø6	41	23	9	G1/2	10	24	6x4
TKN-PZR8-01G	ø8	46	19	5	G1/8	13	12	8x5
TKN-PZR8-02G	ø8	46	21	7	G1/4	13	16	8x5
TKN-PZR8-03G	ø8	46	21.5	7.5	G3/8	13	19	8x5
TKN-PZR8-04G	ø8	46	23.5	9	G1/2	13	24	8x5
TKN-PZR10-01G	ø10	50	23	5	G1/8	15	12	10x6.5
TKN-PZR10-02G	ø10	50	25	7	G1/4	15	16	10x6.5
TKN-PZR10-03G	ø10	50	25.5	7.5	G3/8	15	19	10x6.5
TKN-PZR10-04G	ø10	50	27.5	9	G1/2	15	24	10x6.5

Nipple



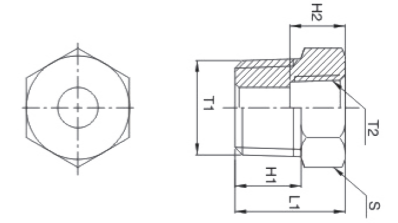
Model	L1	H1	T1	S
TTY-YLM5	15	3.6	M5	8
TTY-YLR1/8	21	8	R1/8	10
TTY-YLR1/4	25	10	R1/4	14
TTY-YLR3/8	27	11	R3/8	17

Maleadapter



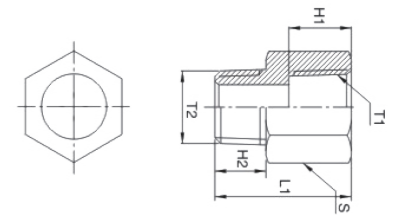
Model	L1	H1	H2	T1	T2	S
TTY-1/8-1/4	23	8	10	R1/8	R1/4	14
TTY-1/8-3/8	24	8	11	R1/8	R3/8	17
TTY-1/4-3/8	26	10	11	R1/4	R3/8	17

Bushing



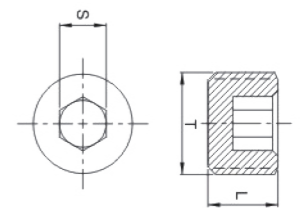
Model	L1	H1	T1	T2	S
TTY-YJ01-M5	11	7	R1/8	M5	12
TTY-YJ02-01	14	9	R1/4	G1/8	14
TTY-YJ03-01	15	9.5	R3/8	G1/4	17
TTY-YJ03-02	15	9.5	R3/8	G1/4	17

Malefemaleadapter



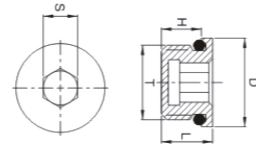
Model	L1	H1	H2	T1	T2	S
TTY-YBM5-M5	12	5	5	M5	M5	8
TTY-YB01-01	20	10	7	G1/8	R1/8	12
TTY-YB02-02	23	11	9	G1/4	R1/4	17
TTY-YB03-03	25	12	10	G3/8	R3/8	19

Inner hexagonplug



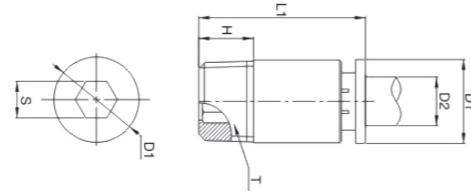
Model	L	T	S
TTY-DT01	7	R1/8	5
TTY-DT02	9	R1/4	6
TTY-DT03	11	R3/8	8

Inner hexagon plug



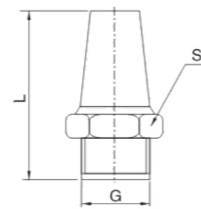
Model	L	H	T	D	S
TTY-GDTM5	5.1	3.6	M5	Φ7.8	2
TTY-GDT01G	7	5	G1/8	Φ12	4
TTY-GDT02G	9	7	G1/4	Φ15.6	6
TTY-GDT03G	9.8	7.5	G3/8	Φ19	10

Metal roundmalestraight



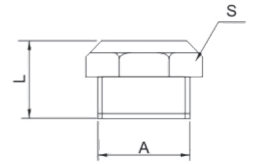
Model	Tube	A	a	B	b	C	D	e	H	12
BKC-POC6-G01	Φ6	12	6	12	10	6	G1/8	2	30.5	15
BKC-POC6-G02	Φ6	12	6	12	10	8	G1/4	2	31	14.5
BKC-POC8-G01	Φ8	14	8	14	12	6	G1/8	2	30.5	15.5
BKC-POC8-G02	Φ8	14	8	14	12	8	G1/4	2	33	16
BKC-POC8-G03	Φ8	14	8	14	12	6	G3/8	2	34	15.5
BKC-POC10-G02	Φ10	16	10	17	15	8	G1/4	2	35	16
BKC-POC10-G03	Φ10	16	10	17	15	6	G3/8	2	35	15.5
BKC-POC12-G02	Φ12	18	12	19	17	7	G1/4	2	35.5	16
BKC-POC12-G03	Φ12	18	12	19	17	6	G3/8	2	36	15

B type series muffler



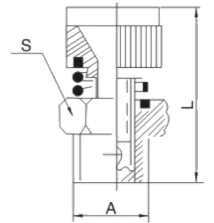
Model	L	S
TTY-B M5	19	8
TTY-B 1/8	23.5	12
TTY-B 1/4	27	15
TTY-B 3/8	34.5	18

V-Byte series muffler



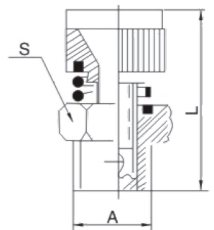
Model	L	S
TTY-V M5	7.5	8
TTY-V 1/8	12	12
TTY-V 1/4	13	15
TTY-V 3/8	14.7	18

SDtype timing muffler



Model	L	S
TTY-SD 1/8	25	12
TTY-SD 1/4	30	14
TTY-SD 3/8	33	17

B type exhaust muffler throttlevalve



Model	L	S
TTY-AG 1/8	33	12
TTY-AG 1/4	35	14
TTY-AG 3/8	43	17

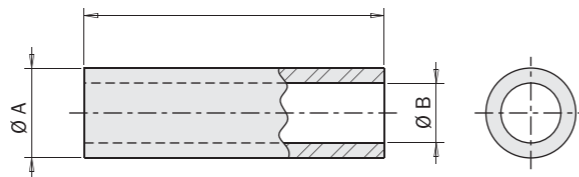


Hoses

Polyurethane hose for compressed air suitable for use with push-in fittings.

Technical characteristics

T= -40° ÷ +60° C
P= -0.99 ÷ +10bar



- A -Outerdiameter]
- B -Innerdiameter]
- R -Minimumbendingradius]
- L -Lenght]
- Lm -Linear mass]
- P -Operatingpressurerange]
- T -Operatingtemperaturerange]

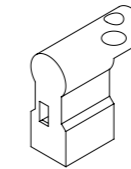
Model	Tube	ØA [mm]	ØB [mm]	R [mm]	L [mm]	Lm [g/m]
OPT04X2.5B	Black	4	2.5	20	25	9.49
OPT04X2.5BL	Blue	4	2.5	20	25	9.49
OPT04X2.5GR	Green	4	2.5	20	25	9.49
OPT04X2.5RE	Orange	4	2.5	20	25	9.49
OPT04X2.5SI	Silver	4	2.5	20	25	9.49
OPT04X2.5YE	Yellow	4	2.5	20	25	9.49
OPT06X4B	Black	6	4	30	25	19.47
OPT06X4BL	Blue	6	4	30	25	19.47
OPT06X4GR	Green	6	4	30	25	19.47
OPT06X4RE	Orange	6	4	30	25	19.47
OPT06X4SI	Silver	6	4	30	25	19.47
OPT06X4YE	Yellow	6	4	30	25	19.47
OPT08X6B	Black	8	6	40	25	30
OPT08X6BL	Blue	8	6	40	25	30
OPT08X6SI	Silver	8	6	40	25	30
OPT08X6YE	Yellow	8	6	40	25	30

Magnetic switch features

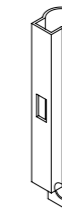
- PNP or NPN logic output;
- No problems in case of vibrations;
- Cable or M8 connector output;
- 100% traceability;
- Standard direct "C" or "T" slot application;
- Optional K-SENS slot adapters;
- Optional 2.5m, 5m and 10m extensions.



OSG



OSN



OSS



OST

