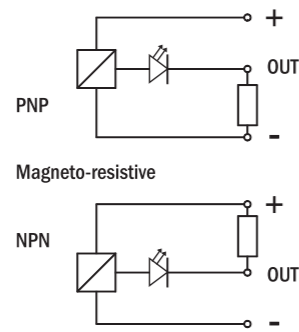


FIRST ANGLE PROJECTION

Model	C (mm)	C1 (mm)	D (mm)	D1 (mm)	D2 (mm)	H (mm)	H1 (mm)	H2 (mm)	P (mm)	P1 (mm)
OFC14-10	12	5.5	Ø14	M3	M5	50	45.5	2.5	7	6
OFC20-20	17	7	Ø20	M4	M5	59.5	55	2.5	9	6
OFC30-30	27	7	Ø30	M4	M5	75	70.5	2.5	9	6

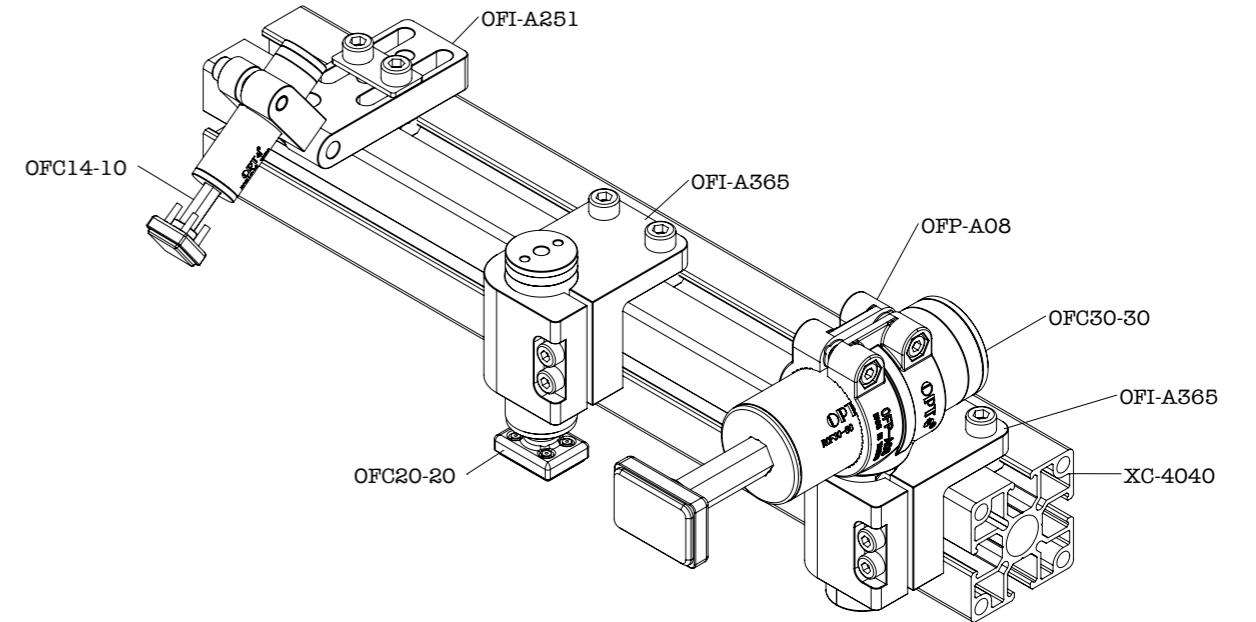


OFC	SWP
OFC14-10	SWP-014
OFC20-20	SWP-020
OFC30-30	SWP-030

SN		
OSS203M	PNP	2.5m / 2.5m cable
OSS203M	NPN	2.5m / 2.5m cable
OSG203M	PNP	M8 / Snap M8 plug connector
OSG203M	NPN	M8 / Snap M8 plug connector

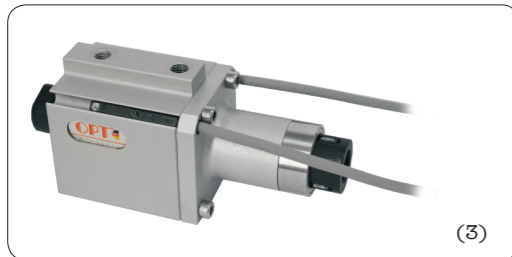


Application example



Vacuum stroke cylinder, with non-rotative through hole rod and mounting stud

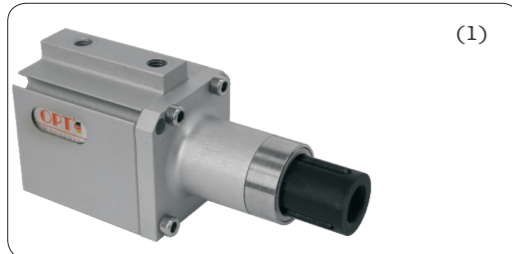
- Double-effect.
- Three sizes available.
- Through hole for vacuum cup feeding (4).
- Three grooves with balls for non-rotative rod (1).
- Clampable stud for mounting by MFI products (2).
- Optional magnetic sensors (3).
- FDA-H1 food-grade grease.



(3)



(4)



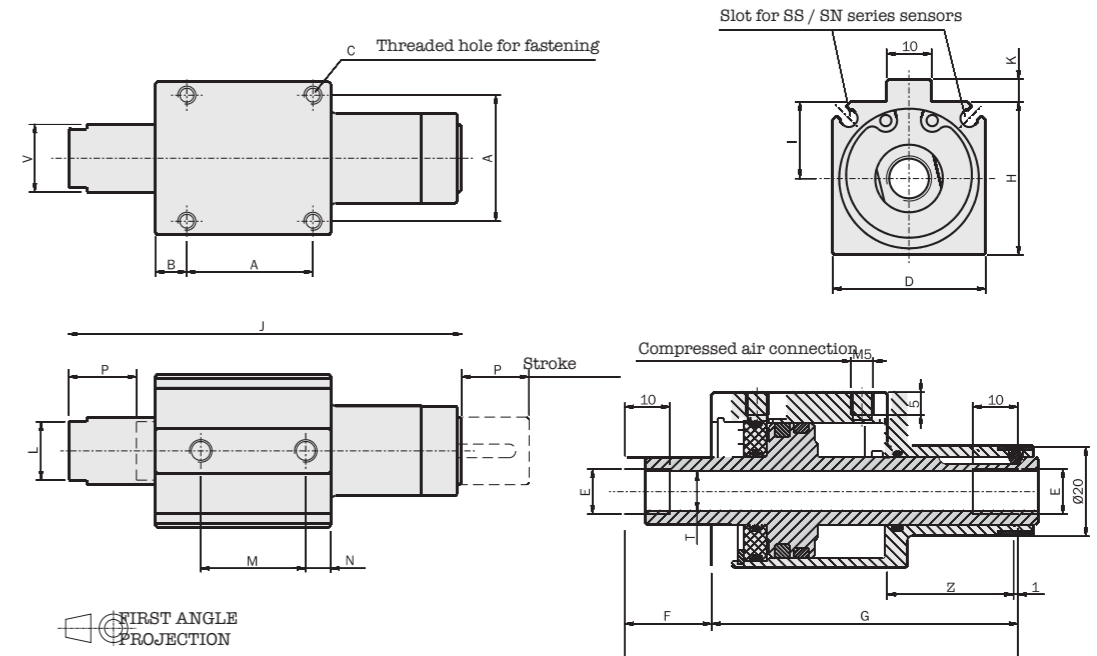
(1)



(2)



Model	Medium	Pressure range	Temperature range	Stroke	Piston bore	Closing /opening force at 6 bar	Cycle air consumption	Minimum actuating time		
OFL2010	Filtered, lubricated / non-lubricated compressed air	2 ÷ 8 bar	5° ÷ 60 °C	10mm	20mm	130N	4.7cm ³	0.02s	60g	
OFL3015		2 ÷ 8 bar	5° ÷ 60 °C	15mm	30mm	300N	1.6cm ³	0.06s	110g	
OFL3030		2 ÷ 8 bar	5° ÷ 60 °C	30mm	30mm	300N	3.2cm ³	0.15s	140g	



Model	A (mm)	B (mm)	C (mm)	E (mm)	F (mm)	G (mm)	H (mm)	I (mm)	J (mm)	K (mm)	N (mm)	P (mm)	T (mm)	V (mm)	Z (mm)
OFL2010	19	9	M3x4	24	24	59	25	13	74.2	4	8	16	Ø4.2	Ø10	28
OFL3015	28	7	M4x6	34	34	68	34	17	87.2	5	13	23.3	Ø8.8	Ø15	28
OFL3030	28	7	M4x6	34	34	91	34	17	125.2	5	13	38.3	Ø8.8	Ø15	36

Application example

