

2-jaw parallel-acting self-centering pneumatic gripper series GS

- Double action.
- Exclusive backlash adjusting system.
- Long life and reliability, maintenance free.
- Different options for fastening.
- Optional proximity magnetic sensors.
- Spring closed (-NC) or spring open (-NO) option.
- FDA-H1 food-grade grease.

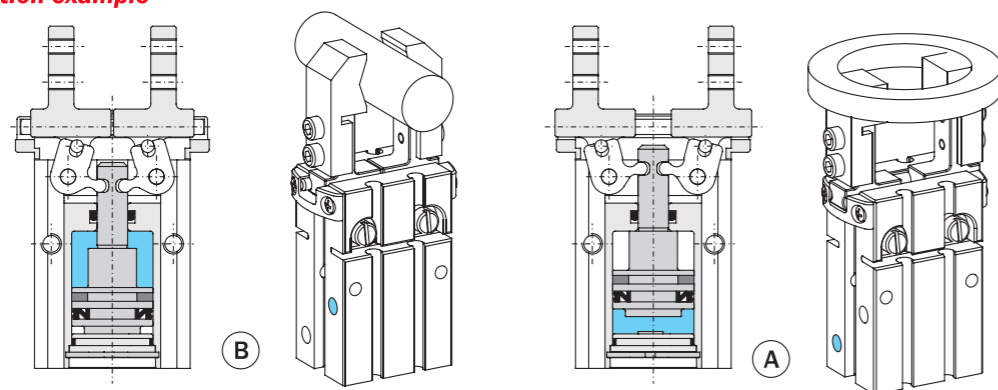


OGS-06A      OGS-06D      OGS-10      OGS-16      OGS-20

ORDER EXAMPLE: OGS-16 NC (normally closed)

Model	Pressure range	Pressure range	Opening gripping force at 6 bar each jaw	Opening total gripping force at 6 bar	Closing gripping force at 6 bar each jaw	Closing total gripping force at 6 bar	Total stroke $\ominus$	Maximum working frequency	Cycle air consumption	Closing time without load	Repetition accuracy	Weight
OGS-06A	0.15÷0.7bar	5°+60°C	6.1N	12.2N	1.7N	3.4N	4N	3Hz	0.7cm <sup>3</sup>	0.01s	0.02mm	21g
OGS-06D	0.15÷0.7bar	5°+60°C	6.1N	12.2N	1.7N	3.4N	4N	3Hz	0.7cm <sup>3</sup>	0.01s	0.01mm	26g
OGS-10	2.5÷8bar	5°+60°C	18N	36N	14N	28N	4.6mm	3Hz	0.7cm <sup>3</sup>	0.01s	0.02mm	45g
OGS-16	1.5÷8bar	5°+60°C	50N	100N	43N	86N	6.8mm	3Hz	3cm <sup>3</sup>	0.02s	0.02mm	98g
OGS-20	1.5÷8bar	5°+60°C	106N	212N	93N	186N	10.4mm	3Hz	7cm <sup>3</sup>	0.05s	0.02mm	207g

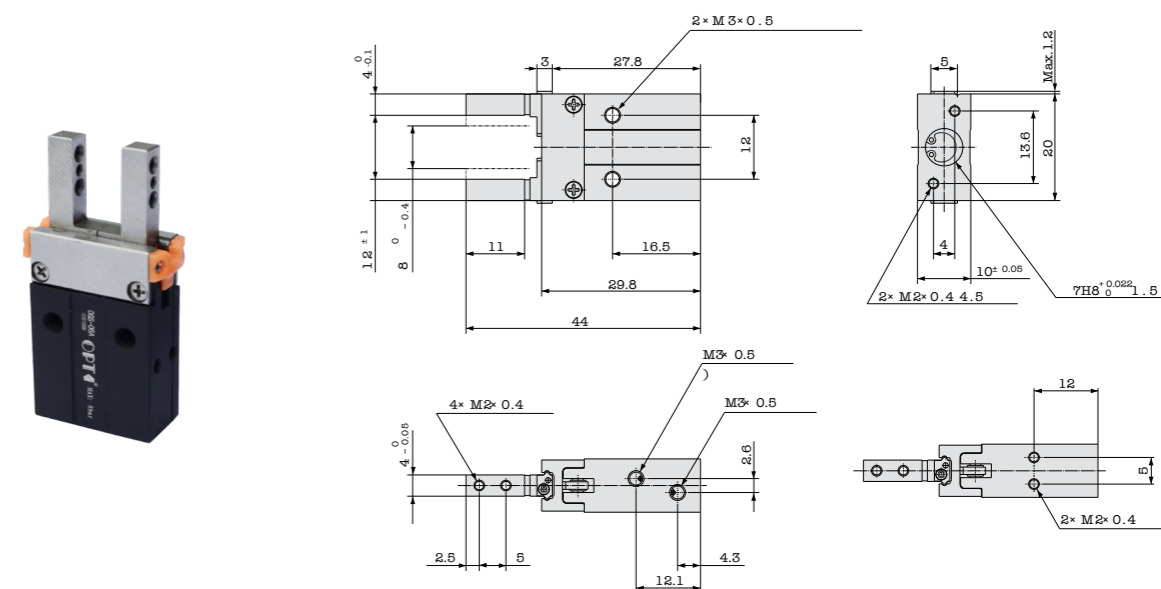
Application example



Pressurized chamber

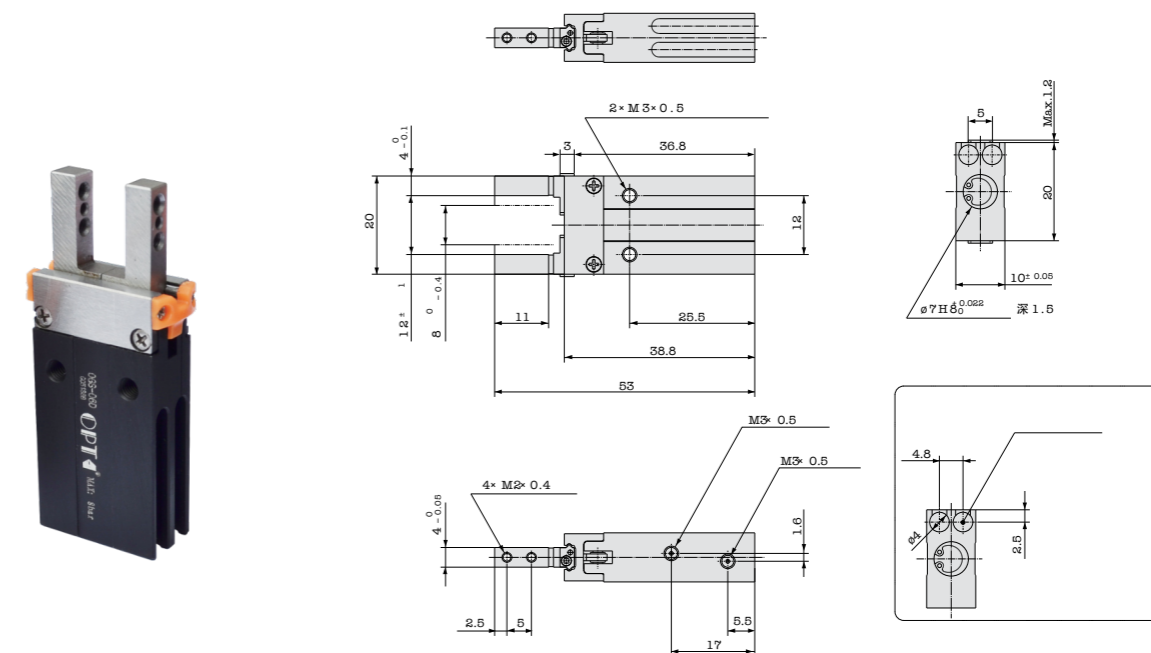
OGS-06A

Dimensions (mm)



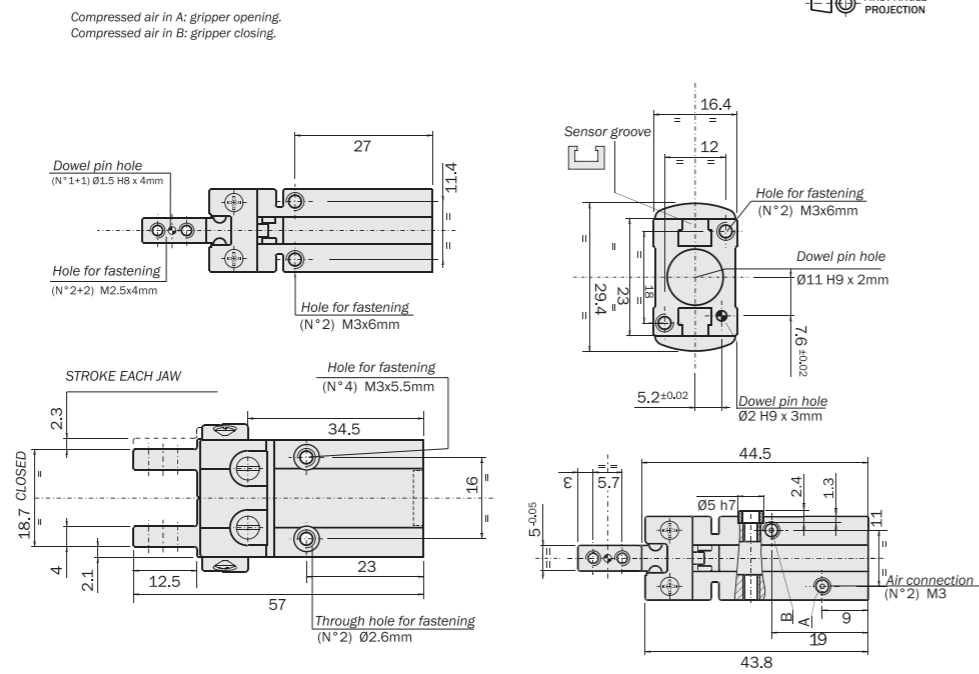
OGS-06D

Dimensions (mm)



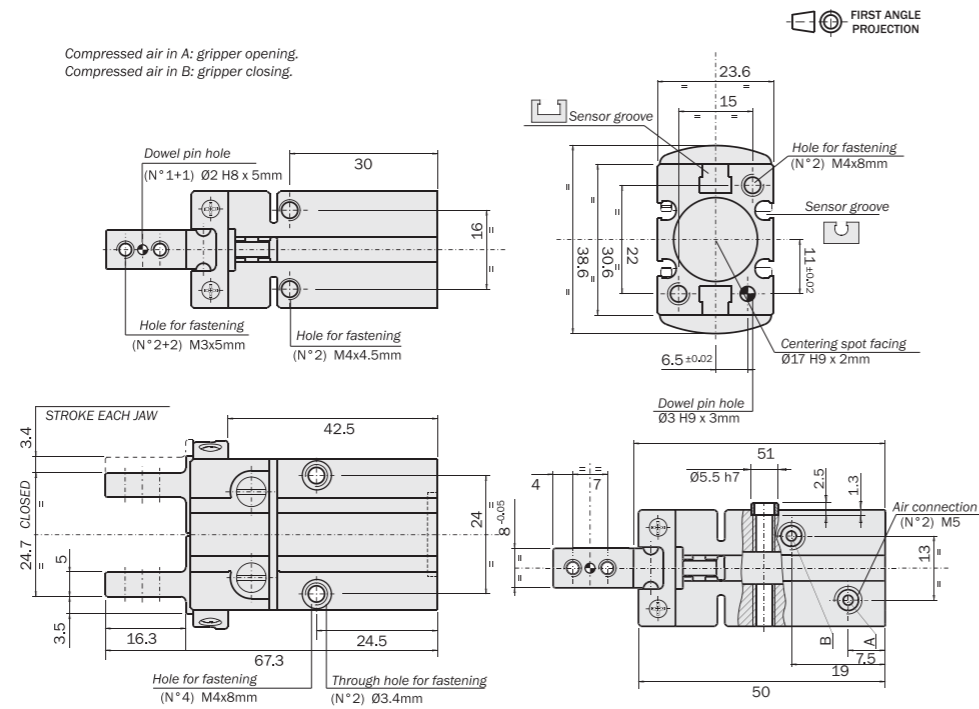
**OGS-10**

**Dimensions (mm)**



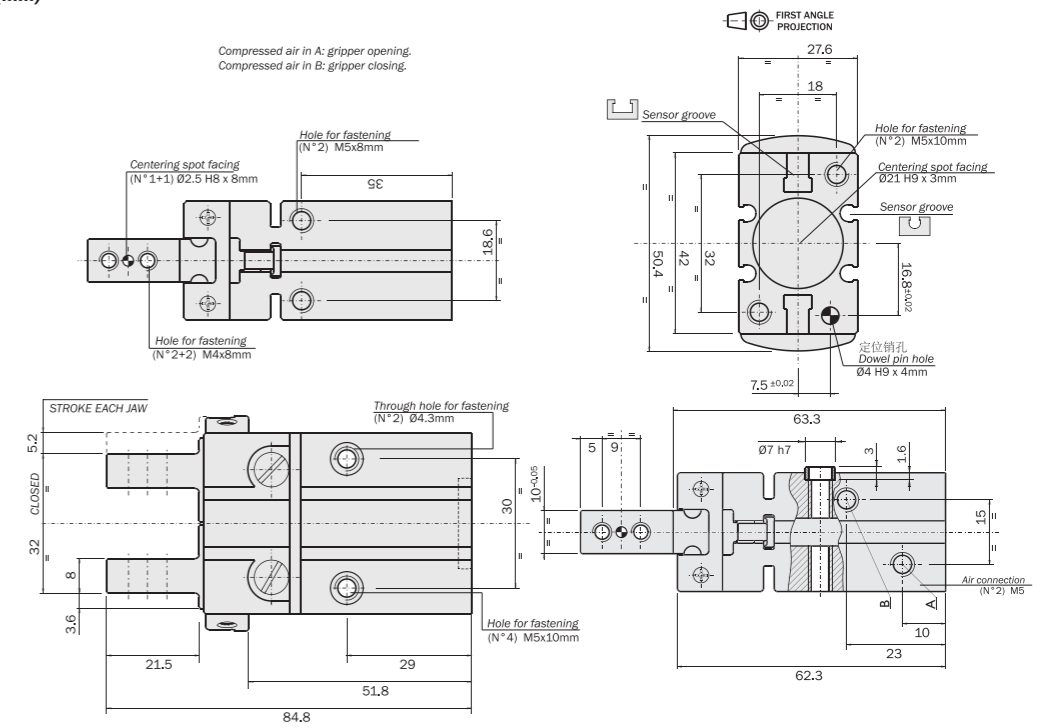
**OGS-16D**

**Dimensions (mm)**

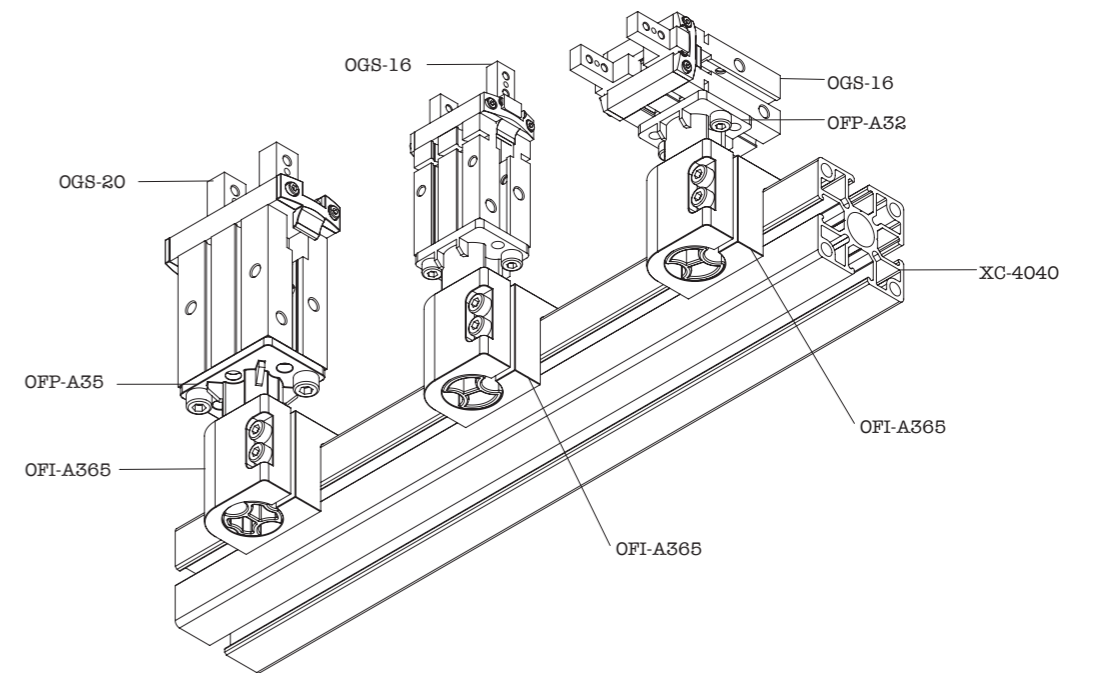


**OGS-20**

**Dimensions (mm)**



**Application example**



● **OGX**

2-jaw parallel-acting self-centering pneumatic gripper series OGX

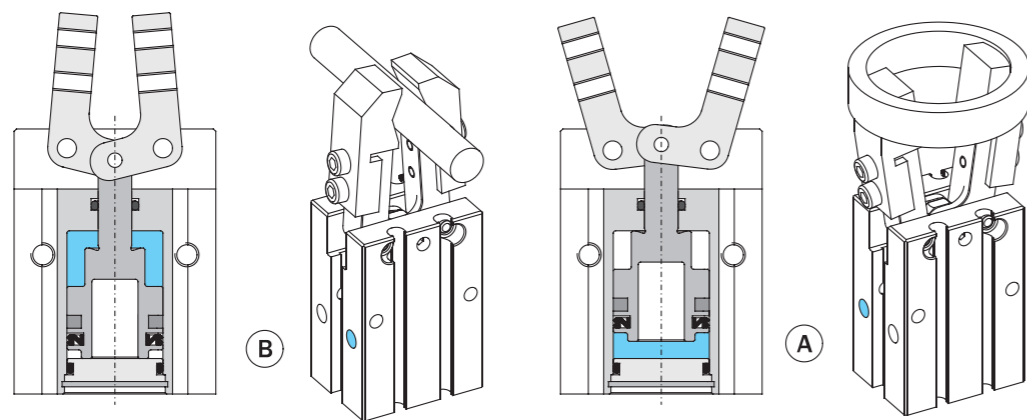
- Double action.
- Exclusive backlash adjusting system.
- Long life and reliability, maintenance free.
- Different options for fastening.
- Optional proximity magnetic sensors.
- Spring closed (-NC) or spring open (-NO) option.
- FDA-H1 food-grade grease.



**ORDER EXAMPLE: OGX-16S NC (normally closed)**

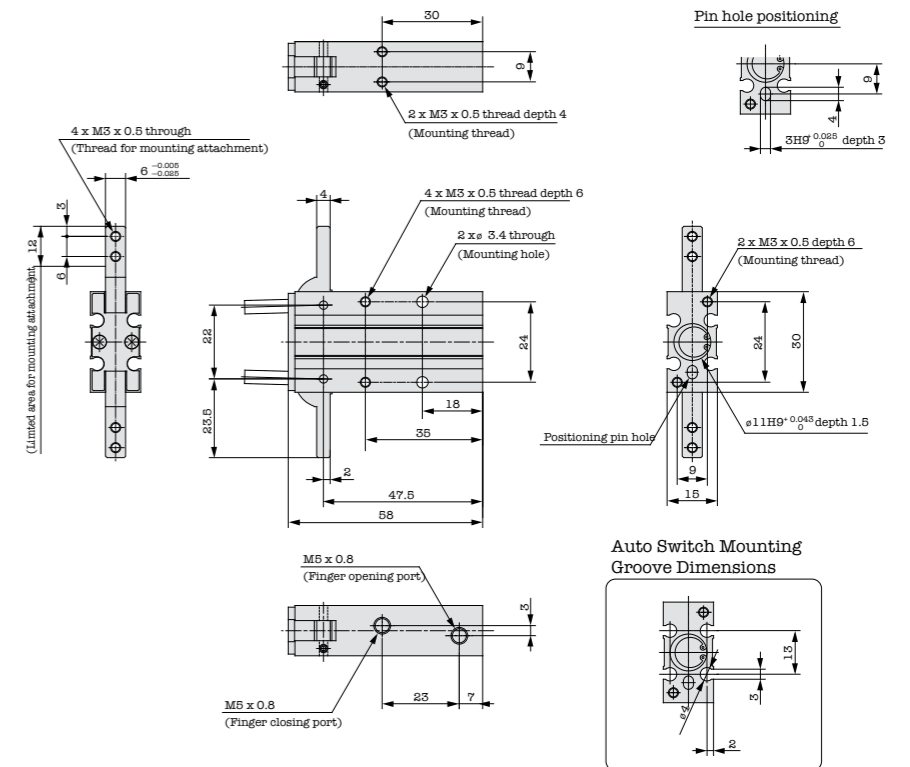
Model	Medium	Pressure range	Pressure range	Opening gripping force at 6 bar each jaw	Opening total gripping force at 6 bar	Closing gripping force at 6 bar each jaw	Closing total gripping force at 6 bar	Total stroke	Maximum working frequency	Cycle air consumption	Closing time without load	Repetition accuracy	Weight	Price(yuan)
OGX-10S		2÷8bar	5° ÷ 60°C.	11Ncm	22Ncm	8Ncm	16Ncm	2x20°	3Hz	0.7cm <sup>3</sup>	0.005s	0.04°	39g	
OGX-16S		2÷8bar	5° ÷ 60°C.	45Ncm	90Ncm	36Ncm	72Ncm	2x20°	2Hz	3cm <sup>3</sup>	0.005s	0.04°	88g	
OGX-20S		2÷8bar	5° ÷ 60°C.	89Ncm	178Ncm	78Ncm	156Ncm	2x20°	2Hz	6cm <sup>3</sup>	0.005s	0.04°	171g	

**Application example**



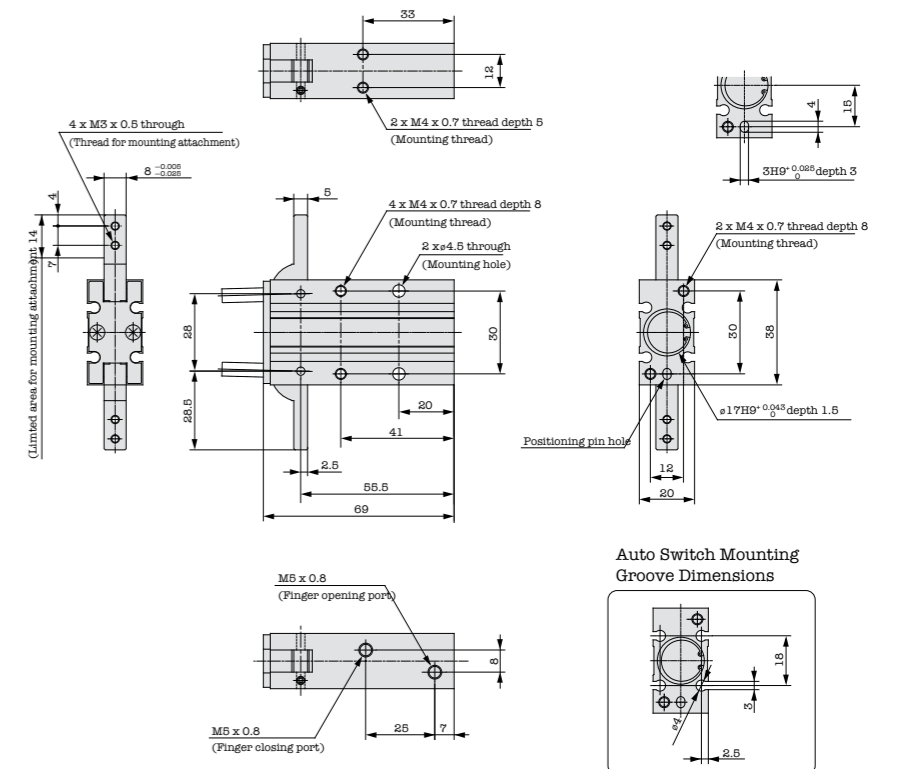
**OGX-10S**

Dimensions (mm)



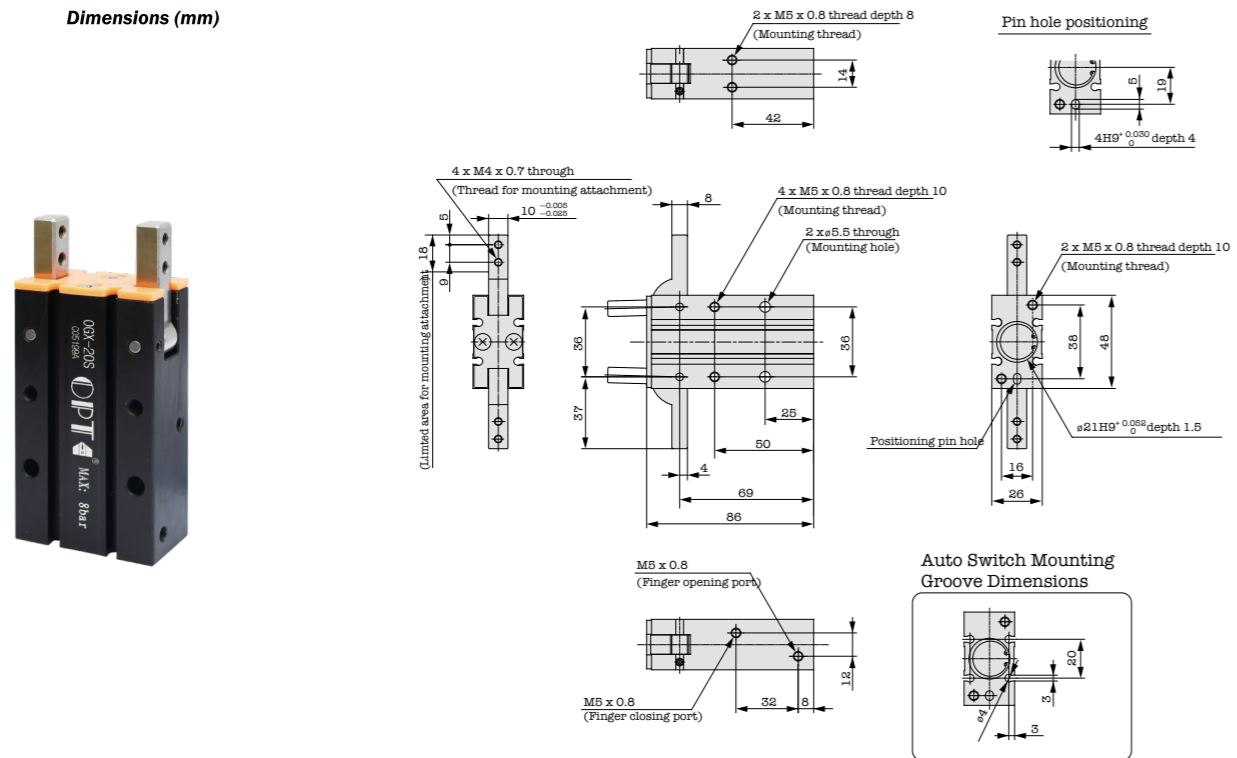
**OGX-16S**

Dimensions (mm)

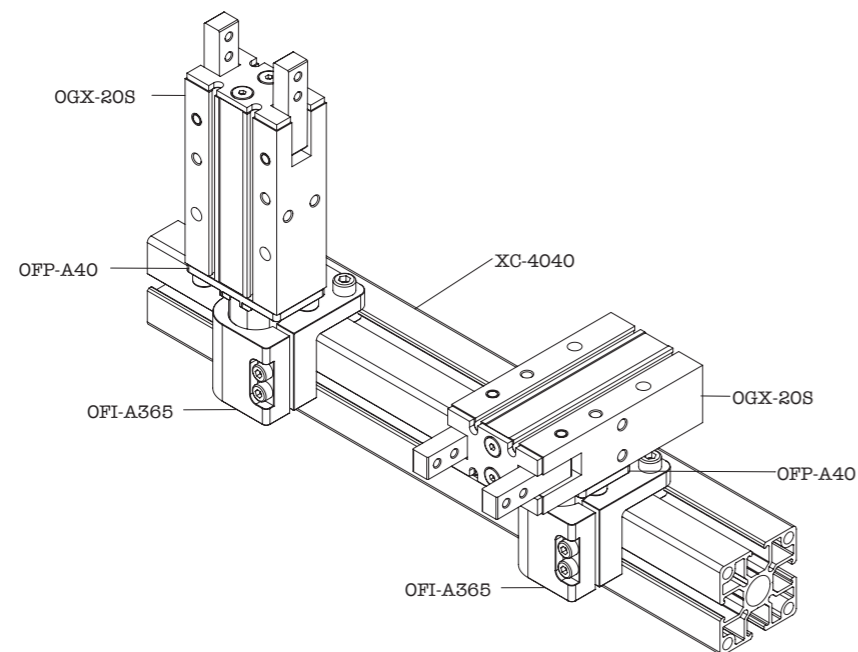


OGX-20S

Dimensions (mm)

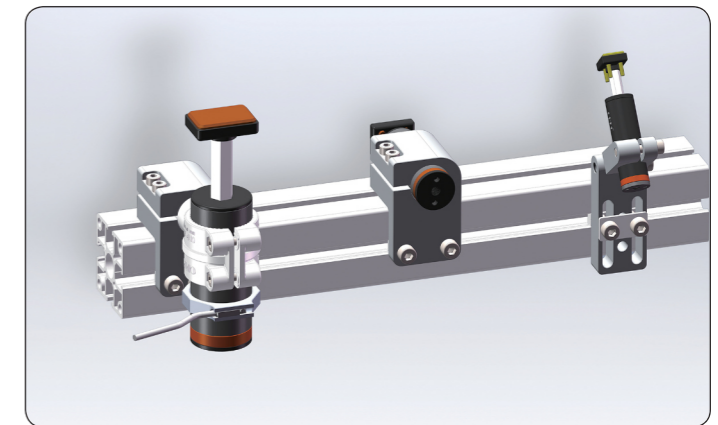
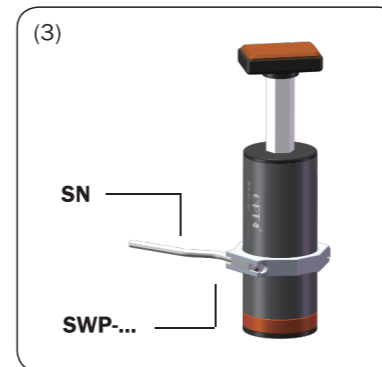
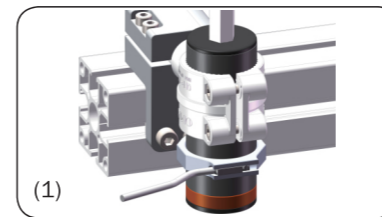


Application example



Minicylinders

General purpose, single-acting, anti-rotation mini cylinders  
 Piston bore: 10mm, 16mm, 25mm.  
 Stroke: 10mm, 20mm, 30mm.  
 Several accessories OFI... for the clamp mounting on the external diameter (1).  
 Several accessories to be mounted on the rod (2).  
 Optional sensors and clamps (3).  
 Food grade grease FDA-H1.



Model	Medium	Pressure range	Temperature range	Stroke	Piston bore	Closing force at 0 bar	Opening force at 6 bar	Cycle air consumption	Weight
OFC14-10	Pneumatically lubricated / non-lubricated compressed air	2 ÷ 8 bar	5° ÷ 60 °C	10 mm	Ø10 mm	4 N	43N	1 cm <sup>3</sup>	20g
OFC20-20		2 ÷ 8 bar	5° ÷ 60 °C	20 mm	Ø20 mm	8N	113N	4 cm <sup>3</sup>	40g
OFC30-30		2 ÷ 8 bar	5° ÷ 60 °C	30 mm	Ø30 mm	23N	271N	15 cm <sup>3</sup>	85g