

Suitable over concrete or wood subfloors

# QUIETwarmth®

RADIANT FLOOR  
HEAT SYSTEM



UL RECOGNIZED **RU** US  
UL FILE NUMBER E314343  
CONFORMS TO UL 499 AND  
CSA C22.6 04-12

 Can be CUT  
to fit length

## TILE

### For Use Under

- Ceramic
- Stone Tile
- Porcelain Tile
- Glue-down wood and vinyl plank (4mm+)

### Installation Methods

- Traditional Tile
- Glue Down
- Available in 120V or 240V
- Low cost energy consumption
- Even heat distribution for tile and stone flooring

**QuietWarmth Peel & Stick Mats** for ceramic, porcelain, and stone tile, and glue down floors.—These mats use conductive ink heating elements that are integrated in an anti-fracture membrane with a very easy to install peel and stick format.



### THIN DESIGN

Thin design will not raise the floor height.



### ENERGY EFFICIENT

Heats the floor evenly with no hot spots.



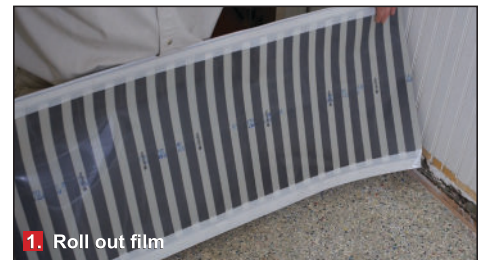
### EASY INSTALLATION

Fast and easy installation the same day.



### FITS ANY ROOM

Flexible peel and stick design for easy installation.  
Length can be cut to fit for customization.



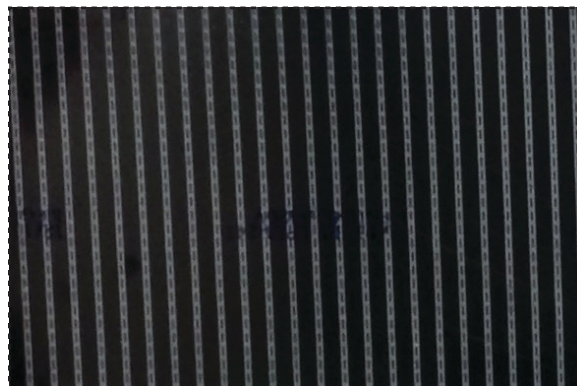
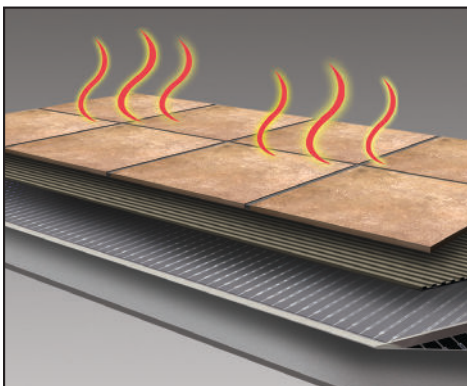
1. Roll out film



2. Peel back release liner & stick mat to subfloor



3. Same Day Tile Installation



## RADIANT FLOOR HEAT SYSTEM



### ADVANTAGES

- **Factory Attached Lead Wires.** 15' lead wires are connected to one end of each mat for easy routing and final connecting to the thermostat.
- **Minimal thickness profile.** Ultra-thin heated panels will not raise the floor height through room transitions.
- **Costs less to operate.** Even heat distribution allows the QuietWarmth systems to cycle quicker resulting in less energy consumption.

### APPROVED FLOOR COVERING MATERIALS

- Ceramic & Porcelain Tile Floors
- Porcelain Wood Plank
- Marble floors
- Glue-down floors
- Stone floors
- Glue-down Vinyl Plank flooring (4mm+ overall thickness)

\* Refer to Floor Covering Manufacturer's specifications for compatibility of their product over any radiant heat before installation.

### LIMITATIONS

- This equipment shall be installed only by qualified personnel.
- Do not install QuietWarmth Tile Floor Heat under carpet, sheet vinyl, or nailed wood floors.
- Do not install QuietWarmth Tile Floor Heat in walls.
- See Tile Floor Heat Installation Guidelines document for substrate requirements.
- Use 12 AWG ROMEX only as supply conductors.

### INSTALLATION

1. Prepare a stable sub-floor.
2. Position QuietWarmth Tile Floor Heat Mat, peel back the release liner, and adhere to floor.
3. Attach tiles using traditional tile setting materials.\*

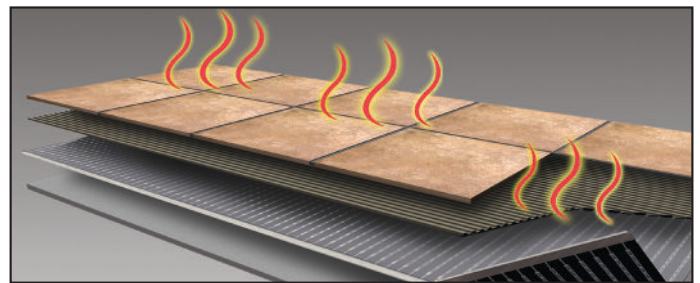
\*For complete installation details, refer to the complete installation manual

### TECHNICAL DATA

QuietWarmth Floating Floor Heat Physical Properties:

Thickness .....	< 0.03"
Watts Per Square Feet .....	12W
Peel Strength .....	20PSI
Weight .....	0.25 lb.sq.ft.
AFM Crack Isolation .....	3/8"
Factory Attached Lead Wires .....	15' lengths

The QuietWarmth® **TileFloor Heat Film** is certified to the highest International standards and comes with **25 Year Limited Warranty.**



### PEEL & STICK RADIANT HEAT FOR TILE FLOORS

#### Standard Sizes for 120V

PRODUCT PART #	DIMENSIONS
QWT1.5X5F120	1.5x5
QWT1.5X10F120	1.5x10
QWT3X5F120	3x5
QWT3X10F120	3x10

#### Standard Sizes for 240V

PRODUCT PART #	DIMENSIONS
QWT1.5X5F240	1.5x5
QWT1.5X10F240	1.5x10
QWT3X5F240	3x5
QWT3X10F240	3x10