

Fisherman Bay Sewer District

P. O. Box 86
Lopez Island, WA 98261
(360) 468-2131

BOARD OF COMMISSIONERS
Tuesday, April 6th, 2021 @5:00 p.m.
MEETING ROOM AT THE OLD FISH BAY LUMBER BUILDING
295 VILLAGE ROAD
LOPEZ ISLAND, WA 98261

EMERGENCY MEETING

I. CALL TO ORDER:

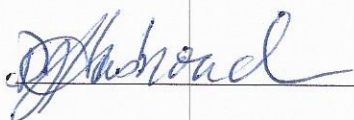
The Board of Commissioners of Fisherman Bay Sewer District held an emergency meeting on the 6th of April 2021 electronically through Zoom. President Lauren Stephens called the meeting to order at 5:00p.m. Also, attending was the Commissioner Tom McDaniel, Commissioner Donna Hasbrouck and the Superintendent Monico Mackinnon.

II. AGENDA ITEMS

1- New Business. Repair measures to deal with the emergency on Milagra Lane. Discussed. Lauren Stephens moved and Donna Hasbrouck seconded a motion to go forward as quickly as possible to implement the plan outlined on a Microsoft PowerPoint by the Superintendent Monico Mackinnon to bypass the blocked section of pipe to restore flow from Milagra Lane.

III. CONCLUDED

The meeting concluded at 5:40pm.



Commissioner



Clerk



MILAGRA LANE ISSUES AND POSSIBLE SOLUTION

For March FBSD Board Meeting

MILAGRA LANE ISSUES AND POSSIBLE SOLUTION

For March FBSD Board Meeting

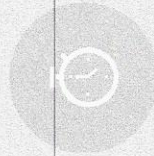
History



FUNCTIONALITY ON MILAGRA
BEGAN TO DEGRADE IN
DECEMBER

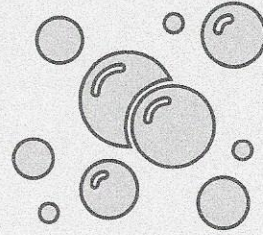


ALARM CALLS PROGRESSED
FROM JUST LAND TRUST TO
ENTIRE ROAD



WE HAVE BEEN SCRAMBLING
TO FIND A SOLUTION BEFORE
WE SPEND OUR ENTIRE
BUDGET ON PUMPING.

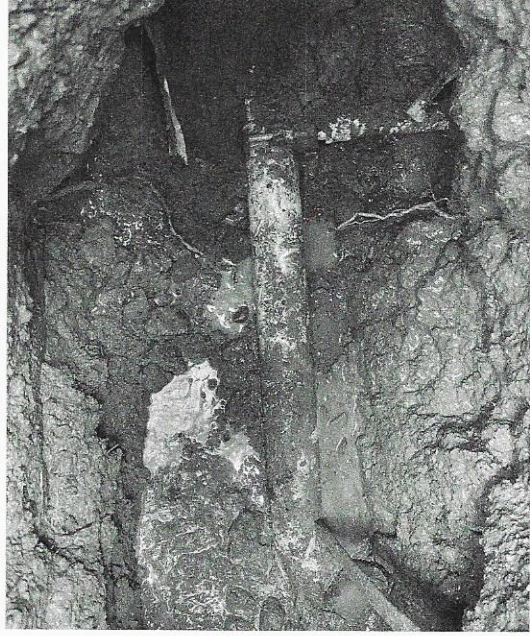
Air vacs



- Air vacs release built up air and allow the release of vacuum.
- The air vac on Fisherman Bay Rd was damaged during replacement and offline
- The air vac on Milagra failed during the December high pressure problems
- Excavating and replacing the valve at the top of Milagra gave us a reusable part to repair the broken air vac at Fisherman Bay Rd
- Unfortunately, this did not solve the problem

Other possibility:
damaged service
line

As we had heard of some excavation occurring that we were not notified about which had caused a broken service line; we thought there was a possibility that the service line connection could be damaged. We had it hydro-excavated to visualize it and found no damage.



Creative Valving



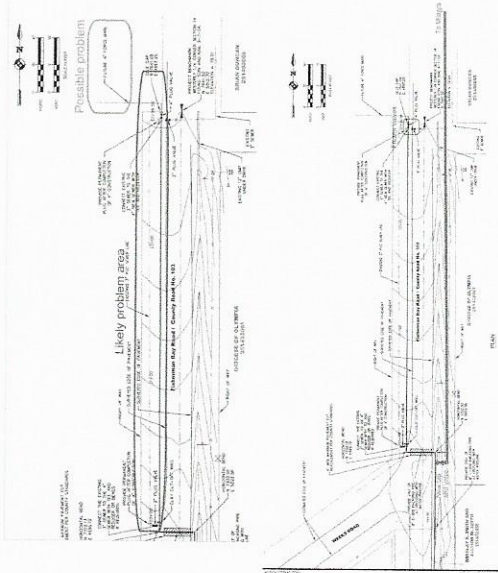
- We closed the valve that is where the line from Lopez Rd enters the plant grounds.
- This was in the hopes that we could ascertain whether the Force main from Fisherman Bay Road was still functioning.
- It showed strangely sporadic flows and then finally had a very low flow coming into the plant.

Outcome

- After nearly two days of variable and diminished flows we received reports of slow drains on Dragon Run.
- We determined that we effectively raised the static level of the District to the top of Dragon Run.
- The valves from Fisherman Bay Rd are assumed to be open.
- Reopening the Lopez Rd line resulted in about ten mins of high flows until it resumed normality.

Determination

- What this tells us is that the problem is somewhere between the bottom of Milagra Ln and the spur of Force main from Fisherman bay Rd.
- We have no other problems elsewhere in the District.
- We need to get a resolution to this immediately.
- The problem is NOT exclusively the I&I issues at the Land Trust.
- We are unable to definitively determine the cause of the issue, although there are some possibilities:
 - The damage to the service line that was caused may have allowed for dirt, roots, or grit to enter the line.
 - This may have caused some sort of obstruction, although there could not be anything sizable that could pass through a 1" line that would cause an obstruction of a 4" force main.
 - If there is a check valve at the FBR force main spur – its possible that it could be mechanically impinged with grit.
- This would be impossible to visualize, and to replace the valving and associated piping would be costly and potentially not provide a solution.
- I believe I have a viable solution to this conundrum.



The top image shows the possible problem
the bottom image shows a possible solution

I believe if we add a bypass line from the bottom of Milagra to the Main on FBR just south of Weeks Rd, we will bypass the area that I have determined is the issue. I am working on getting pricing and the other details required for this undertaking. I have submitted this idea to all of the engineers we work with for evaluation, have contractors working on pricing, and am coordinating with Speertaps to determine their availability.

After meeting with Jeff:

He pointed out that if we could replace this valve, we would have the capability to replace the other two valves without Speertaps. I am not sure of the ability to replace that valve with little room, and this still leaves the problem remaining with further work to accomplish to resolve the issue.

