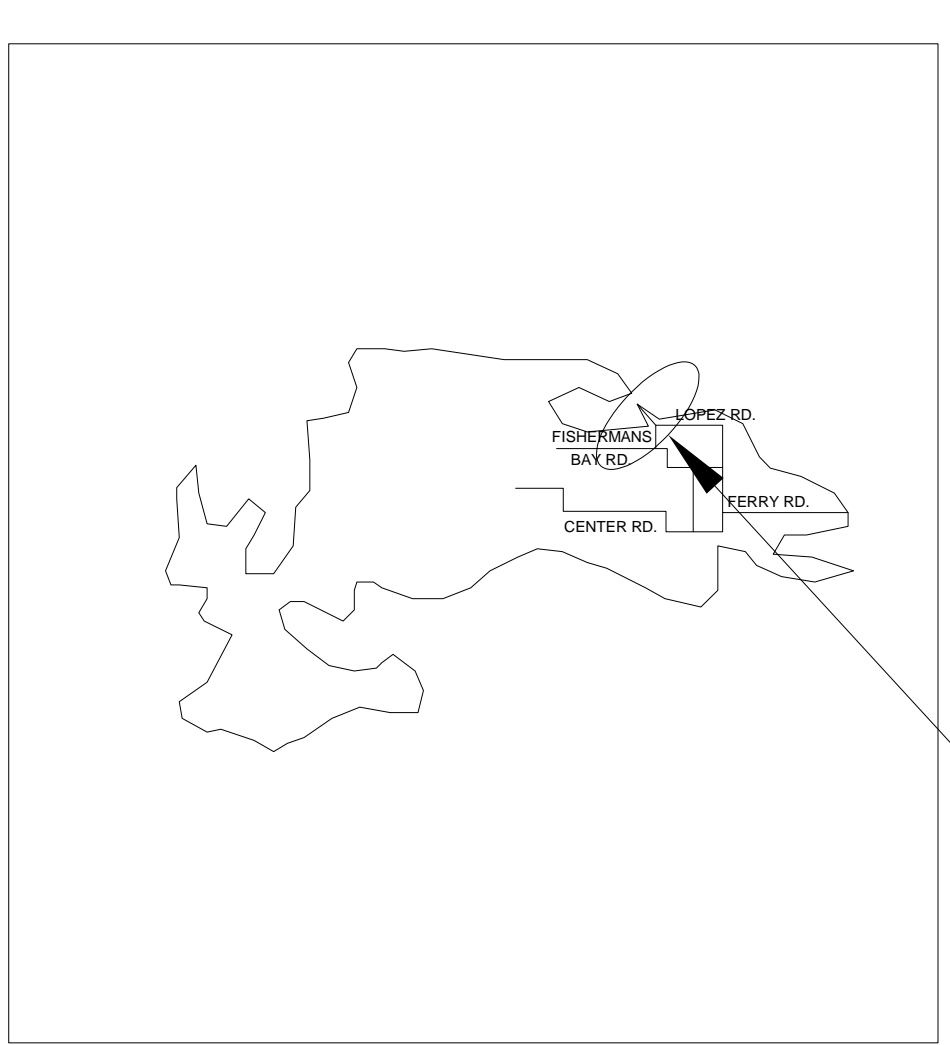
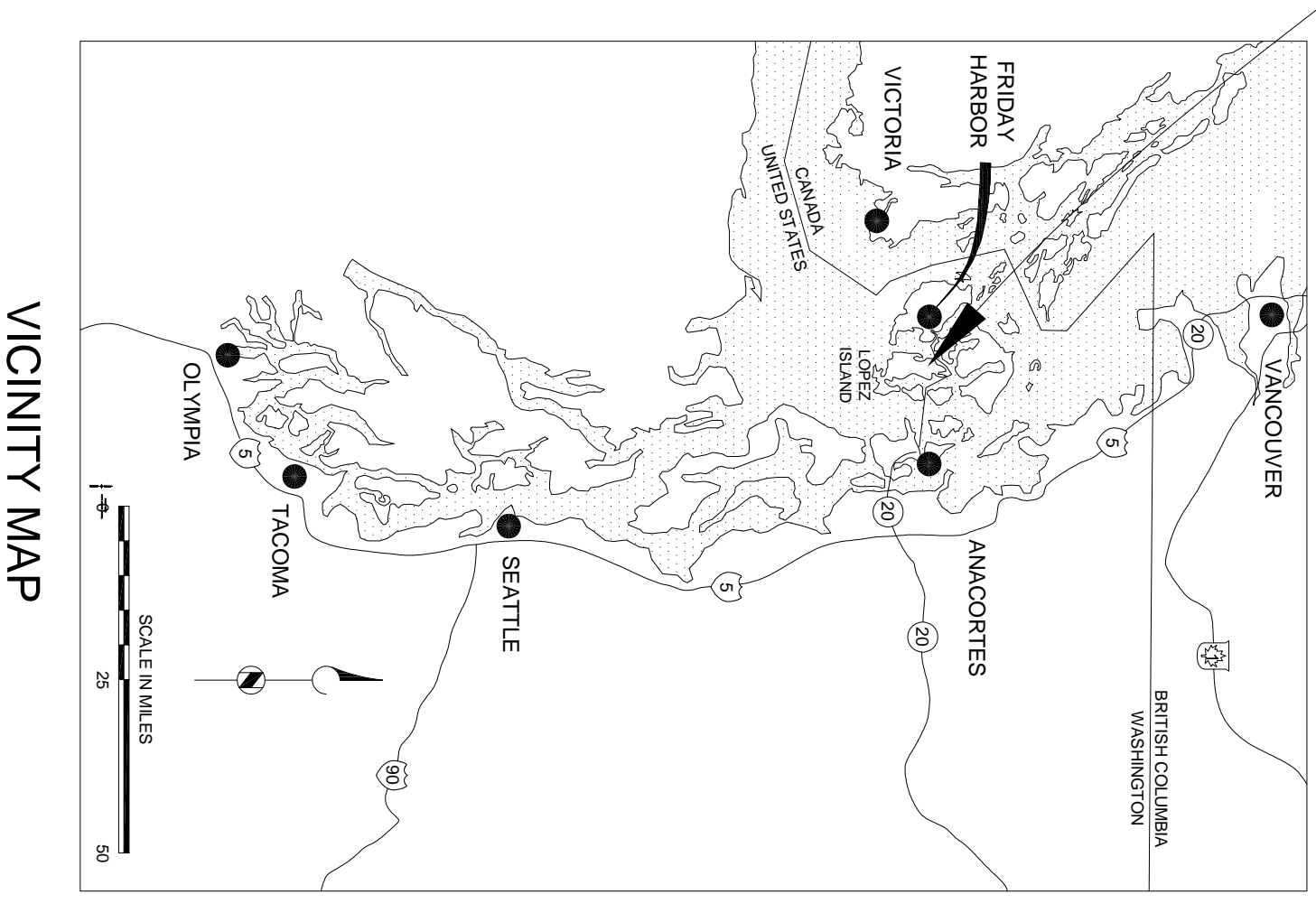


FISHERMANS BAY SEWER DISTRICT

WEEKS POINT WAY SEWER LINE REPLACEMENT PROJECT

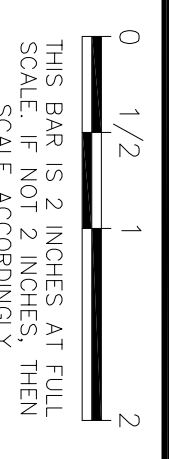
MAY 2023  
 ON LOPEZ ISLAND  
 SAN JUAN COUNTY, WA



WEEKS POINT WAY

DRAWING SHEET INDEX

SH	PG	TITLE
G-01	1	COVER
G-02	2	GENERAL NOTES
G-03	3	STANDARD DETAILS
C-01	4	PLAN STA 1+00 TO STA 5+50
C-02	5	PLAN STA 5+50 TO STA 11+50
C-03	6	PLAN STA 11+50 TO STA 16+94.4

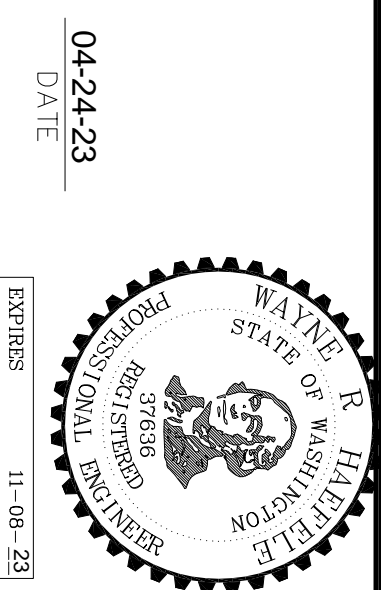


REV	DATE	BY	DESCRIPTION

**Wayne Haefele & Associates, Inc.**  
 PO Box 384  
 Lopez Island, WA 98261  
 (360) 472-1407  
 whaefele@consultant.com

DESIGNED: **WRH**  
 DRAWN: **WRH**  
 CHECKED:  
 QA /QC:  
 CONSTRUCTION:

*Wayne R. Haefele*  
 WAYNE R. HAEFELE, P.E.

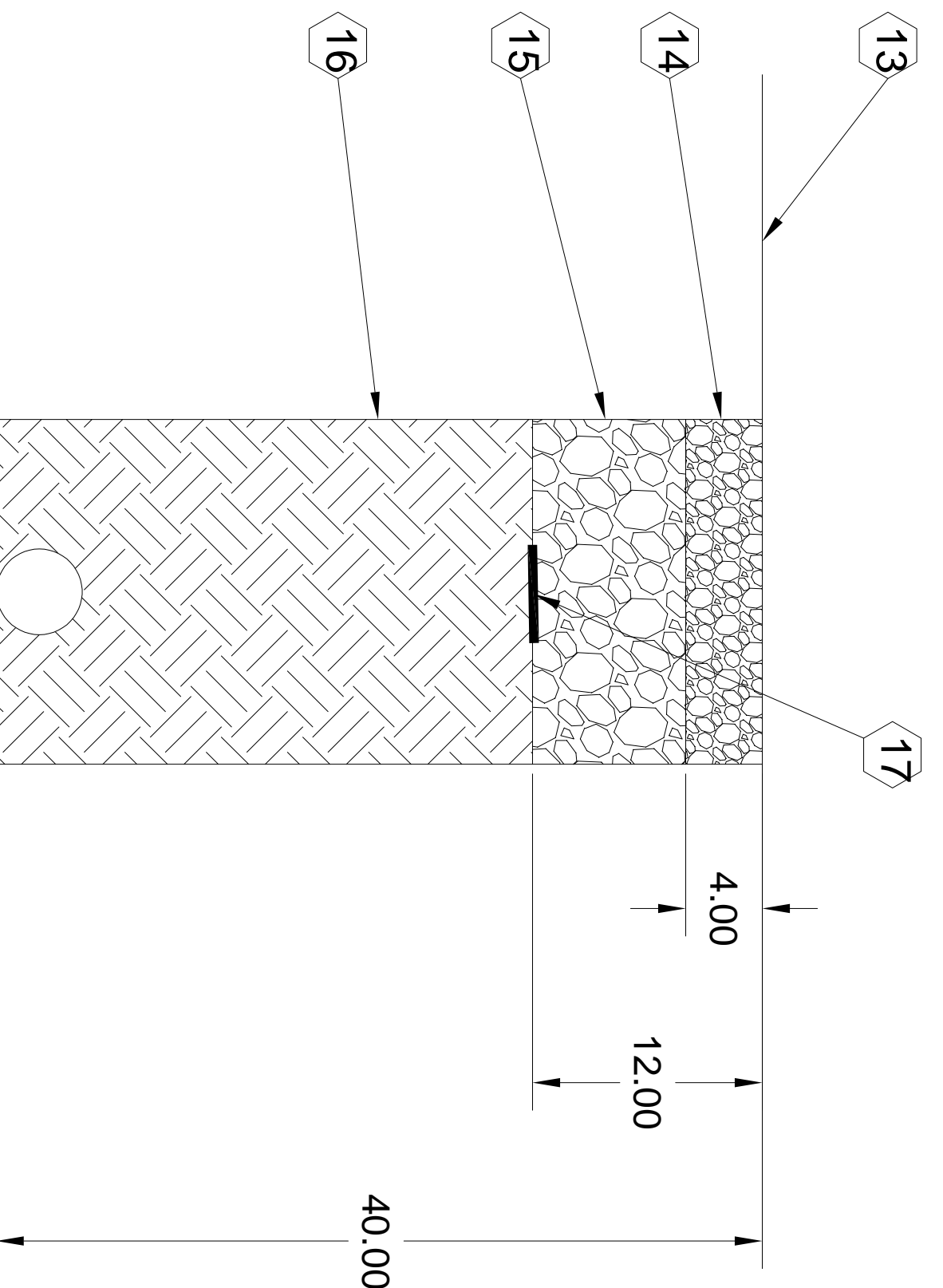


0 1/2 1 2  
 THIS BAR IS 2 INCHES AT FULL SCALE. ACCORDINGLY,  
 SCALE

WEEKS POINT WAY SEWER REPL.  
 FOR FISHERMAN BAY SEWER DISTRICT

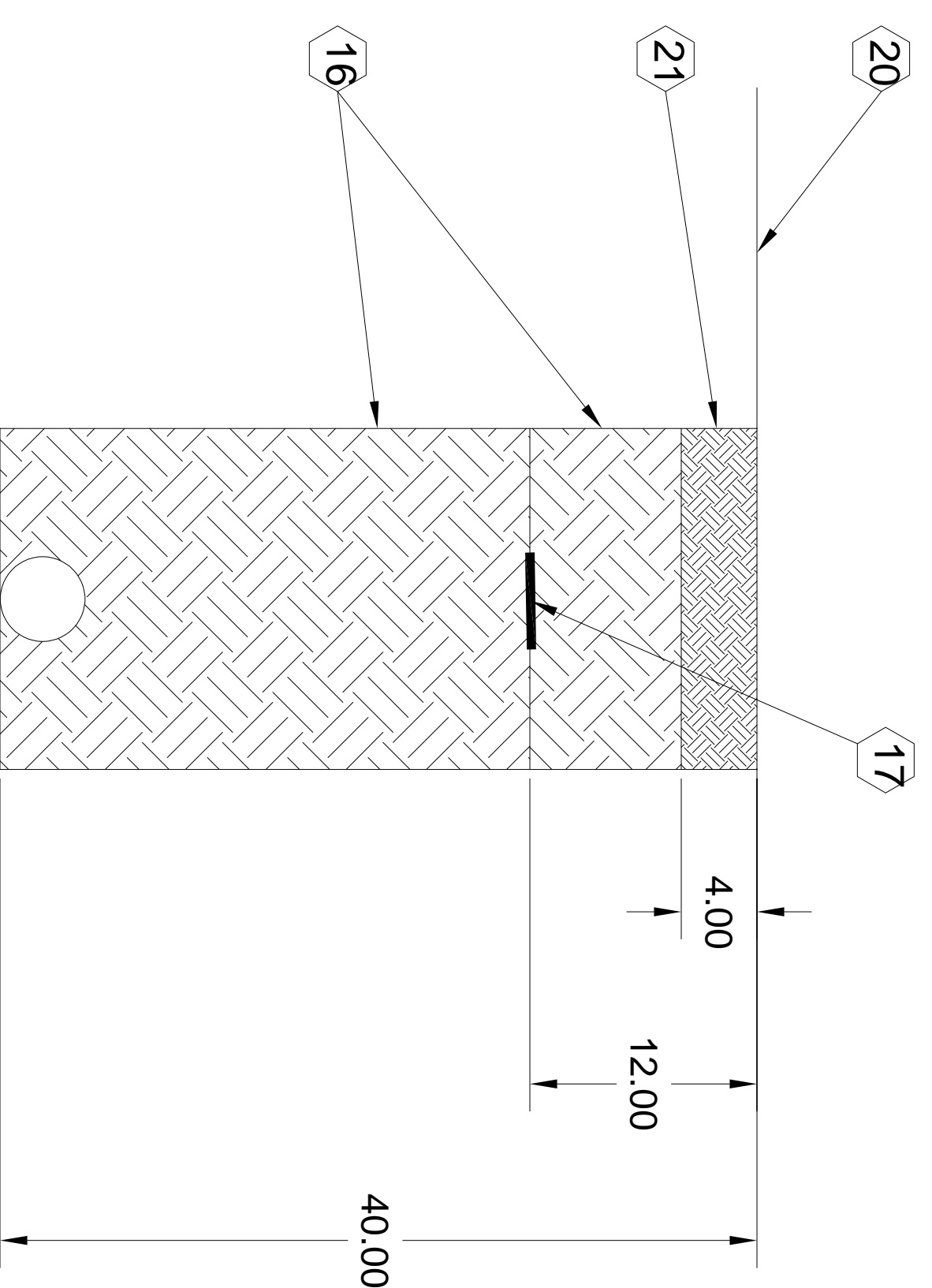
PROJECT NUMBER  
 FB190925  
 DRAWING NUMBER  
 G-01  
 SHEET NUMBER  
 1 OF 6





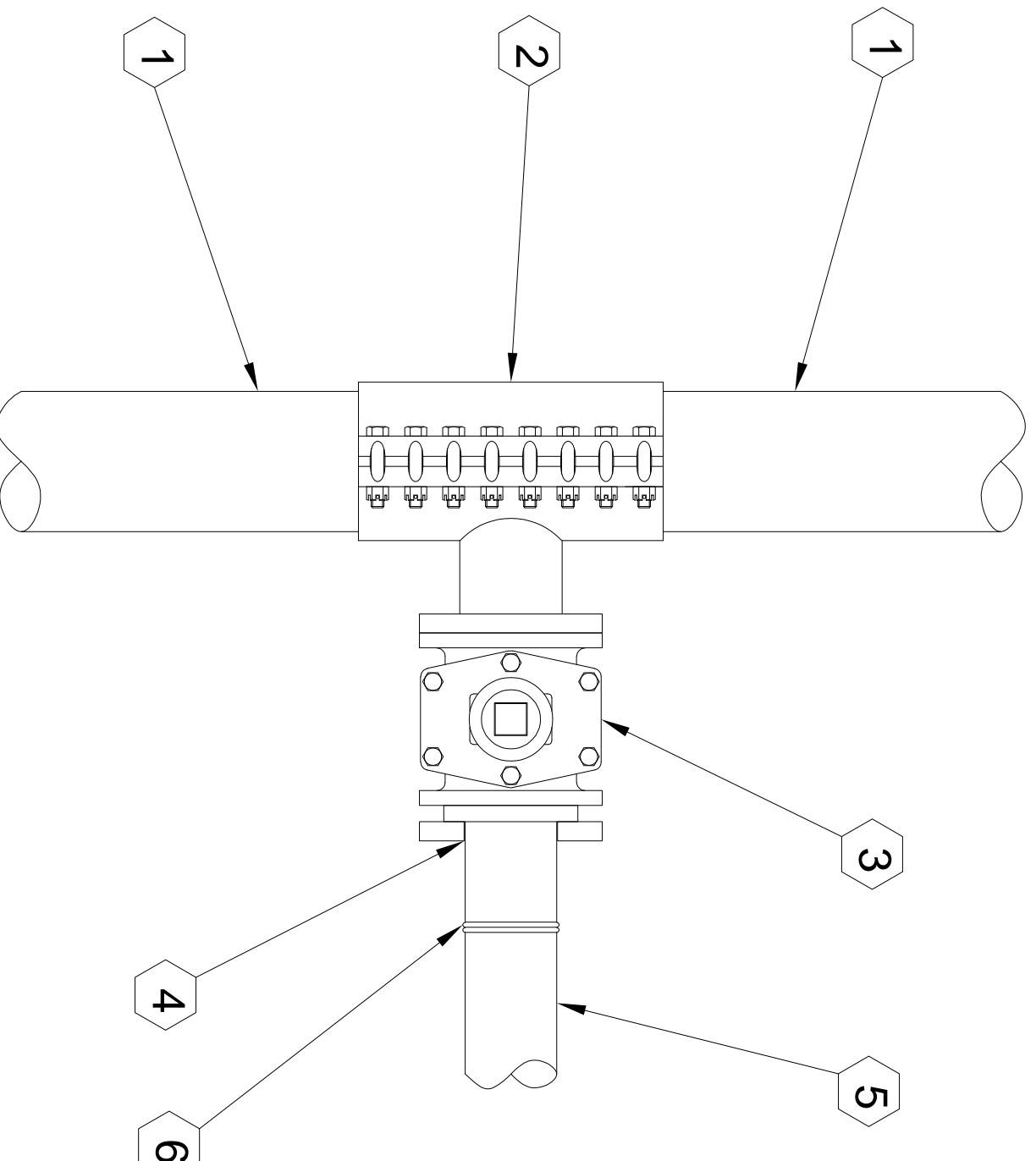
**TRENCH DETAIL**  
ROADS & DRIVEWAYS  
SCALE: NOTED

\* TYPICAL ALL PLAN SHEETS WHERE OPEN TRENCH IS USED



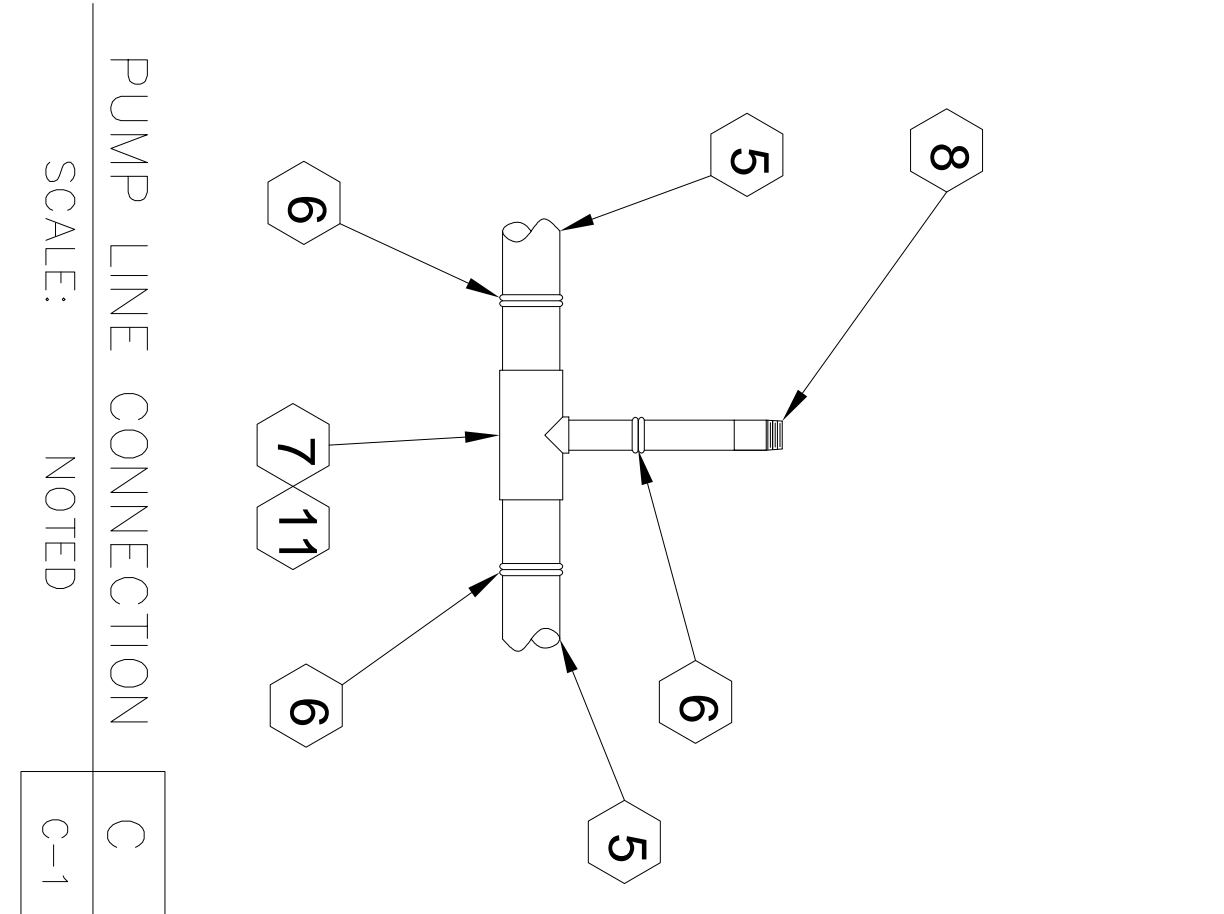
**TRENCH DETAIL**  
LAWN AND GARDEN AREAS  
SCALE: NOTED

\* TYPICAL ALL PLAN SHEETS WHERE OPEN TRENCH IS USED



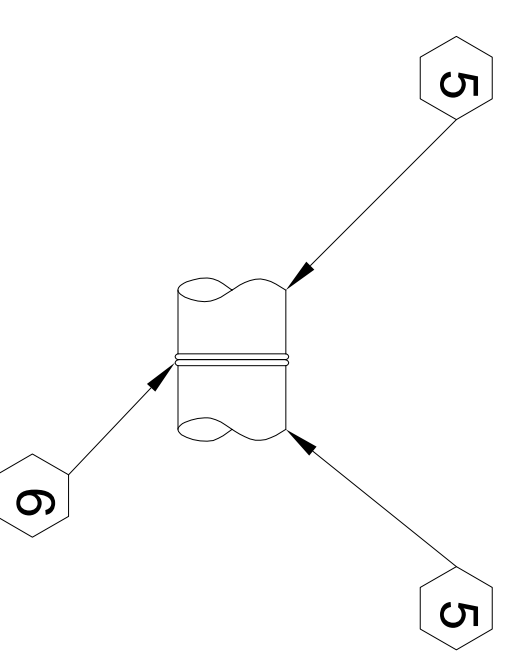
**POINT OF CONNECTION**  
SCALE: NOTED

A
C-1



**PUMP LINE CONNECTION**  
SCALE: NOTED

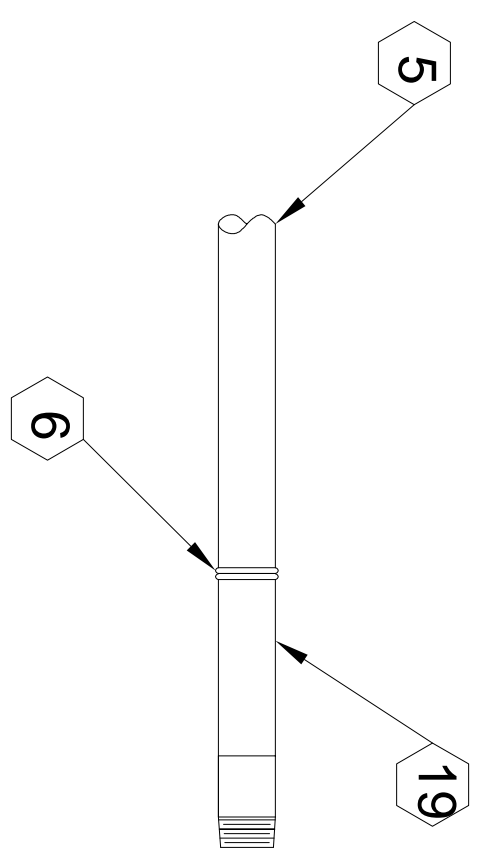
C
C-1



**TYPICAL PIPE JOINT**  
SCALE: NOTED

\* ALL PLAN SHEETS

B
*



**END DETAIL**  
SCALE: NOTED

D
C-4

**CONSTRUCTION NOTES**

- 1 EXISTING SEWER FORCE MAIN IN LOPEZ ROAD, BELIEVED TO BE 6" SCHED 40 GLUE JOINT PVC.
- 2 NEW 6X6X2 STAINLESS STEEL TAPPING SADDLE
- 3 NEW 2" FL X FL NON-RISING STEM RESILIENT SEATED GATE VALVE WITH 2" OPERATING NUT
- 4 NEW 2" IPS HDPE BUTT WELD FLANGE ADAPTER WITH DUCTILE IRON BACK UP RING
- 5 NEW 2" DR11 IPS HDPE FORCE MAIN
- 6 FUSION BUTT WELD ALL JOINTS PER ASTM F 2620 AND MANUFACTURER INSTRUCTIONS.
- 7 NEW 2x2x1-1/4 DR11 IPS HDPE BUTT WELD REDUCING TEE
- 8 NEW 1-1/4 DR11 IPS BUTT WELD HDPE X BRASS NPT TRANSITION, CAP WITH FPT CAP + TEFLOX TAPE UNTIL HYDROSTATIC TEST IS COMPLETE.
- 9 NEW 4" DR11 IPS BUTT WELD END CAP INSTALLED FOR HYDROSTATIC TEST PURPOSES.
- 10 NEW 4x4x4 DR11 IPS HDPE BUTT WELD TEE
- 11 ELECTROFUSION TEE ACCEPTABLE
- 12 CUT OFF END CAP INSTALLED FOR HYDROSTATIC TEST AND CHANGE OVER EXISTING CUSTOMER LATERAL USING A 4" FLEXIBLE DWV SHEAR RING COUPLER.
- 13 EXISTING ROADWAY SURFACE.
- 14 PVT ROAD: 4 INCHES IMPORTED 5/8 MINUS CRUSHED ROCK COMPACTED TO 95% PUBLIC ROAD: 2 INCHES IMPORTED 5/8 MINUS + 2 INCHES HMA
- 15 8 INCHES IMPORTED 1-1/2 MINUS CRUSHED ROCK COMPACTED TO 95% RELATIVE DENSITY.
- 16 TRENCH SPOIL MATERIAL, IMMEDIATELY AROUND PIPE COMPACT WITH CARE USING JUMPING JACK. STARTING 6 INCHES ABOVE PIPE COMPACT TO 90% RELATIVE DENSITY. 1 FOOT ABOVE PIPE PLACE LOCATOR TAPE IN ACCORDANCE WITH NOTE 17. IF TRENCH SPOIL IS UNSUITABLE IMPORTED 5/8 MINUS CRUSHED ROCK MAY BE USED.
- 17 1' BELOW ROADWAY SURFACE PLACE 3" WIDE WARNING TAPE, GREEN STATING "BURIED SEWER LINE BELOW".
- 18 DELETED.
- 19 NEW 2" DR11 IPS BUTT WELD HDPE X BRASS NPT TRANSITION, MAY BE USED TO FILL LINE AND AS RISER FOR TESTING. INSTALL THREADED BRASS NPT CAP AND BURY WHEN LINE IS COMPLETE.
- 20 EXISTING LAWN OR GARDEN SURFACE
- 21 4 INCHES IMPORTED TOPSOIL FROM AN APPROVED COMMERCIAL COMPOSTING FACILITY

REV	DATE	BY	DESCRIPTION	DESIGNED:	DRAWN:	CHECKED:	QA /QC:	CONSTRUCTABILITY:	
<p style="text-align: center;"><b>Wayne Haefele &amp; Associates, Inc.</b> PO Box 384 Lopez Island, WA 98261 (360) 472-1407 whaefele@consultant.com</p>				<p style="text-align: center;"><i>Wayne R. Haefele, P.E.</i> WAYNE R. HAEFELE, P.E. 5/24/2023 DATE</p>					
<p style="text-align: center;">WEEKS POINT WAY SEWER REPL. FOR FISHERMAN BAY SEWER DISTRICT</p>				<p style="text-align: center;">PROJECT NUMBER FB190925</p>					
<p style="text-align: center;">FORCE MAIN DETAILS</p>				<p style="text-align: center;">DRAWING NUMBER G-03</p>					
<p style="text-align: center;">SCALE: NOTED</p>				<p style="text-align: center;">SHEET NUMBER 3 OF 6</p>					