

PHOENIXPLACE

NEWSLETTER

Spring
Term 2
2017

"TURNING ASPIRATIONS INTO REALITY"

Chief Editor: Amita Kumari

From the Directors

Although this was a shorter term, it was as ever very busy and full of exciting opportunities for the students. Each term we strive to offer our students a range of enriching and valuable experiences to support their spiritual, moral, social and cultural (SMSC) development. Trips and visits to The Bank Of England, fundraising for Charities, musical performances, interview skills training, and college visits are just some of the additional experiences that students have taken part in to increase understanding and appreciation of different people, beliefs, cultures and the wider world. Our SMSC themed assemblies, whereby students focus on respect, tolerance, fairness, safety and caring for others, are highly successful and valued by both students and staff. Our Assembly themes and PSHE are strongly linked to British Values and encourage students to take responsibility for themselves and their learning.

As we prepare for next term we remind everyone that it is vitally important that students are well prepared for success in life in terms of exam results and outcomes, but success and happiness for our students are about much more and we are proud of the work that both staff and students put in, over and above everyday lessons and learning, to develop confidence, creativity, resilience, problem-solving and many other life skills.

We wish our students, parents, staff and the wider school community a peaceful Easter break!

Directors

Sophie Nelson

Kailash Kumari

DATES FOR YOUR DIARY



Easter Holidays start on Monday 3rd April.

Target Meetings are on Tuesday 18th April 2017, so pupils start back properly on Wednesday 19th April.

NEWS & EVENTS

It has been another active term at PhoenixPlace. Our students have taken part in various educational visits and workshops, as well as rewards trips.

We have received various visitors to the school this term, for educational purposes. The School Nurse has held fortnightly workshops on interesting & essential topics such as hygiene, sexual health, and self esteem & self worth. Insight have been visiting the school regularly to demonstrate the effects of drugs and alcohol.

Trips this term have included a visit to the Guildhall for a careers day hosted by the Livery Companies of London, where the students demonstrated their chopping skills and leather crafting skills, and learned how to engrave on copper.

To celebrate International Women's Day, we took the students to see Hidden Figures, at the cinema. Let's hope they're inspired to reach for the moon!

Our Year 8s and 9s were spooked at The London Dungeons, before being treated to the stage production of The Curious Incident of the Dog in the Nighttime, as they're studying it in English.

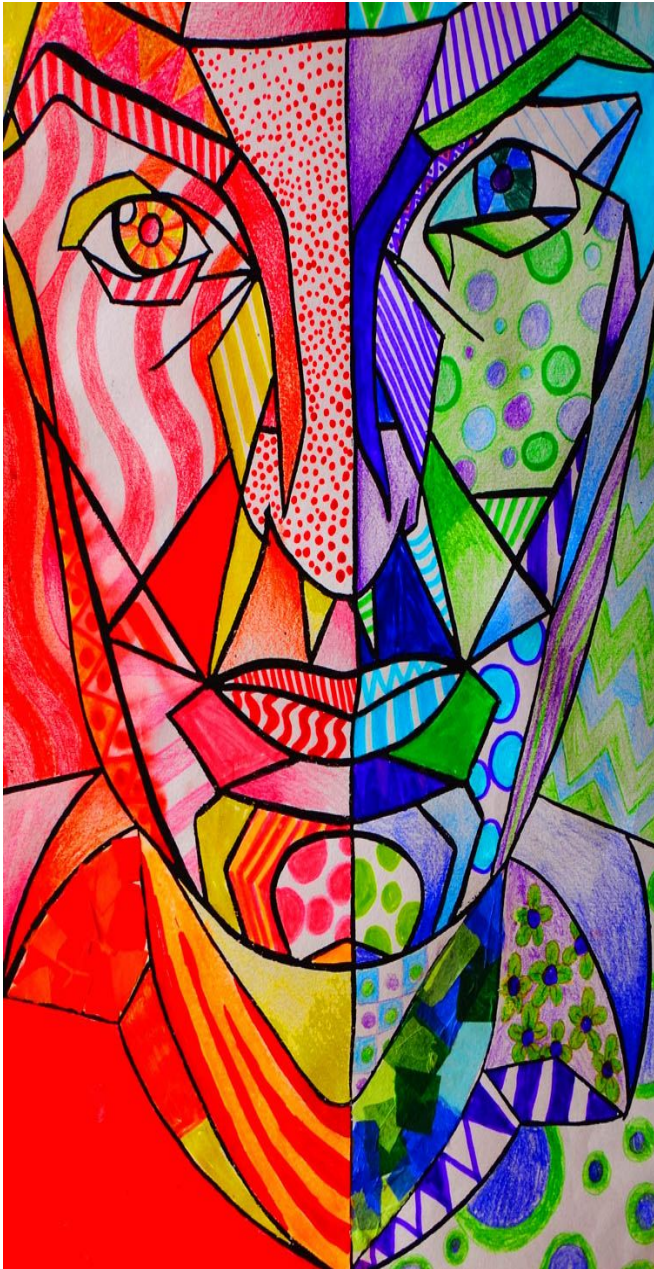
NEWS & EVENTS

Our Educational psychologist, Dan Sheehan, held a workshop for staff and students to explore our heritage. It was fascinating to see the different countries that make up the PhoenixPlace family, and how we've all come to be in South East London.



Pupils' Work

In Creative Arts, the students have been working on the formal elements of art, learning the hot and cold colours, and what effect each element can have on an image. They experimented with different materials and textures, such as crayon, paint, pencil and felt pens, to create a portrait. As you can see, the colours do have an impact!



As part of their Geography module in the ASDAN projects, our Key Stage 3 students had to design a Visit London poster which promoted three different tourist attractions.

Year 9 student Reanna had the clever idea of using London's iconic buses as the header:



Year 8 pupil Tonianne decided to promote Buckingham Palace, Nelson's Column and the Houses of Parliament in her poster:



These posters are making us want to be tourists in our own city and explore the sights! Well done, girls! We'll expect to see more fantastic creative work from you all in the near future.

ACHIEVEMENTS



This section is our best section!

It is where we like to recognise the achievements of students throughout the term.

ATTENDANCE

Attendance is very important to us. To be successful you have to be PRESENT and take part.

WELL DONE to the following students who have achieved their target attendance % or 100% attendance

| Week 1 | Week 2 | Week 3 | Week 4 | Week 5 |
|---------------|---------------|---------------|----------------|--------------|
| Hayley Maigwa | Rebecca Amode | Tonianne Hill | Reanna Elliott | Kelly Miller |

It was punctuality week from 20th March to 26th March. All students made the greatest effort to be early and win the prize. We are yet to announce the winner but would like to congratulate those who made it in on time every day.

HOMEWORK

These students impressed the staff by ASKING us for homework! Keep it up, girls, and complete it!

| | | |
|---------------|---------------|---------------|
| Rebecca Amode | Tonianne Hill | Hayley Maigwa |
|---------------|---------------|---------------|

Assessments

Each of our students has completed an assessment in both English and Maths, this term. As well as showing staff at the school how our pupils are progressing and developing, it prepares the students for exam techniques and practices.



Subject reviews - what we have been learning this term!!

| | |
|----------------------|--|
| ENGLISH | Reading & understanding texts to gather information, arguments & opinions, horror & mystery story writing. |
| MATHS | Multiplication, finance: time & money problem solving, fraction, percentages. |
| SCIENCE | Life processes, plant & animals cells and tissues, plant and animal organs and systems. |
| CREATIVE ARTS | The Formal Elements of Art: Hot & Cold Colours |
| PE | Fitness tests, zumba, Just Dance, Table Tennis, Football |
| GEOGRAPHY | ASDAN Module 5: Holidays |
| COPE | Mock interview practise, career research, CVs and covering letters |

Useful Information

| | |
|---|---|
| <p>As we all know, the internet is an integral part of all our lives. It offers many positive opportunities. Just as we want to keep our children safe in the real world, we want to do the same in the virtual world. PHOENIXPLACE is continuing its steps to ensure e-safety for all our students.</p> | <p>We are still tackling, head-on, the issues surrounding healthy eating, by striving to encourage our students to maintain a balanced diet. The students and staff have taken part in Junk-Free January, Fit February and Motivational March. Lunches served onsite are healthy, though we're all still allowed to have treats on Fridays!</p> |
| <p>Spring Term Dates Target Setting and Review Meetings - Tuesday 18th April 2017 Students Return - Wednesday 19th April 2017</p> <p>Bank Holiday - Monday 1st May 2017</p> <p>INSET Day - Friday 12th May 2017</p> <p>Half Term - Monday 29th May 2017 - Friday 2nd June 2017</p> <p>Terms Ends for students - Wednesday 19th July 2017</p> | <p>PHOENIXPLACE - specialist alternative education provision for girls 11-16 Redcar St Camberwell London SE5 0NA</p> <p>t: 0207 703 7189</p> <p>Independent School Registration: 210/6007</p> <p>www.phoenixplace.co.uk</p> |