

PHOENIXPLACE NEWSLETTER



WELCOME TO OUR FIRST NEWSLETTER ISSUE!

Dear Parents/Carers

I do hope you all are in the best of health.

This year has turned around at such a quick pace, I cannot believe that we have closed another year and we are in the summer holidays!

Welcome to our first (but not the last) issue of our newsletter!. It has been a while since we last sent out a newsletter and we wanted to get this first issue out for summer and we will continue to share 'whats happening' at PP including our student and staff achievements termly starting from the new academic year.

It has been a very busy, eventful year for all students and staff. We have had numerous workshops delivered by external organisations such as Tender, St Giles, H.I.S Project and Stronger Minds covering topics such as mental health and well being, healthy relationships, gangs and peer pressure.

Our Year 11s worked incredibly hard preparing for and taking their GCSE exams. We wish them all the luck with their results and their new beginnings at college. They will find out their results on **Thursday, August 24, 2023.**

We have had some wonderful assembly presentations where we learnt about topics such as Autism, World Book Day, Cyberbullying, Stephen Lawrence to name but a few. We also had some very interesting debate assemblies where we tackled through some thought provoking questions such as *'Is Barbie is a good role model for young girls?'*; *'Are violent video games appropriate entertainment for teenagers?'*; *'Should the voting age be lowered to 16?'*

Sadly are also saying goodbye to three valued members of staff who have contributed their hard work and dedication to PhoenixPlace over the last few years. We say goodbye to:

Amita Kumari - Safeguarding Manager

Sheila Nyaluyima - Science/Maths Teacher & Yr9 Form Tutor

Utsav Patel - Science Teacher & Yr10 Form Tutor

Thank you all for being part of the PhoenixPlace journey. Thank you for your patience, passion and determination to make a positive difference in the lives of our young people.

We will miss you!!

Sophie Nelson
Headteacher



Featured in this issue:

- Exciting news! - pg2
- Stephen Lawrence Assembly pg3
- Arts Award Trip pg 4
- Attendance news pg5
- PSHE Updates pg6
- Student Awards-Certificates pg7
- Trips and visits pics pg8
- Useful Information pg9-10

DATES FOR YOUR DIARY

Summer holidays start:

Mon 24th July

INSET Week

4th-8th September



Students Start Dates:

Wed 6th Sept 23

Student Induction Meetings
(appointment times will be sent out nearer the time)

Mon 11th Sept 23

New students & KS3 (7-9) in

Tues 12th Sept 23

All students in



We did try and keep this top secret for as long as we could but another reason why this year has been so busy is that we have acquired a brand new additional site just down the road from Redcar Street!



For a number of years we have been searching for more space to increase our cohort size and enhance our curriculum offer for our young people and staff and this has finally come to pass!!.

We signed the lease in November 2022 and construction work was commissioned to get the site up to standard over two phases. We completed Phase 1 of this project in May 23.



Following on from this we also have had a successful Material Change Inspection from Ofsted!

We will be opening Phase 1 for students in September 23.



There is still a little bit of work and moving in to do, but we are really excited and looking forward to a new start in our brand new building in September!.

PHOENIXPLACE
7A BADSWORTH ROAD
CAMBERWELL
SE5 0JG

HOW TO FIND US:
We are 5 mins walk from
Brandon.

Turn right out of school gate
and walk to the end of Redcar
Street
Pass Counsellor Street and
Comber Grove

Cross onto Badsworth Road
and follow the road around
until you see 7A (opposite
Camberwell Day Care and
After School Project) -

Unfortunately there is NO free
parking outside the building.

There are a couple of paid
parking slots outside the
school and on Medlar Street.

Please note:
We will still be using the
Brandon Site for students for
lessons, activities etc.

What we learnt in Assembly



We took part in an assembly to educate students about the life and legacy of Stephen Lawrence and the importance of combating racism and prejudice in our society, on the 30 year anniversary

The students and staff then participated in a stand up true or false game. where they were quizzed on;

- Racial Stereotyping
- Overt Racism
- Covert Racism
- Unwitting Prejudice / Unconscious Bias
- Institutional Racism

Year 10 Student

STEPHEN LAWRENCE DAY ASSEMBLY

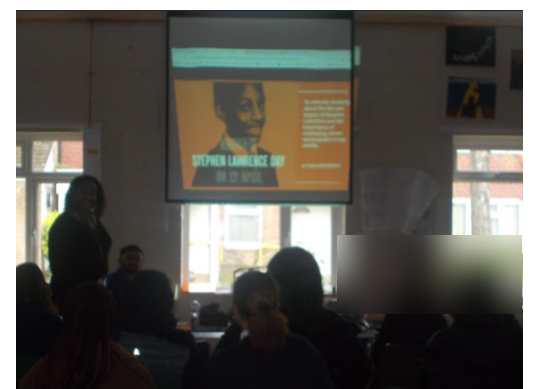
'I attended a assembly, on the 18/April/2023 by Carol Lake about Stephen Lawrence talking about his death and his memory.

He was 18 years old and was killed because of a racist hate crime whilst waiting for the bus.

Stephen wanted to be an architect and had a very bright personality, and wanted to have a good impact on the community.

After we talked about Stephen we played a TRUE and FALSE game where we were asked questions about different things and after that we watched a video where Stephens mum was talking about him and how shocked the family, were when he was killed'.

A Year 9 Student



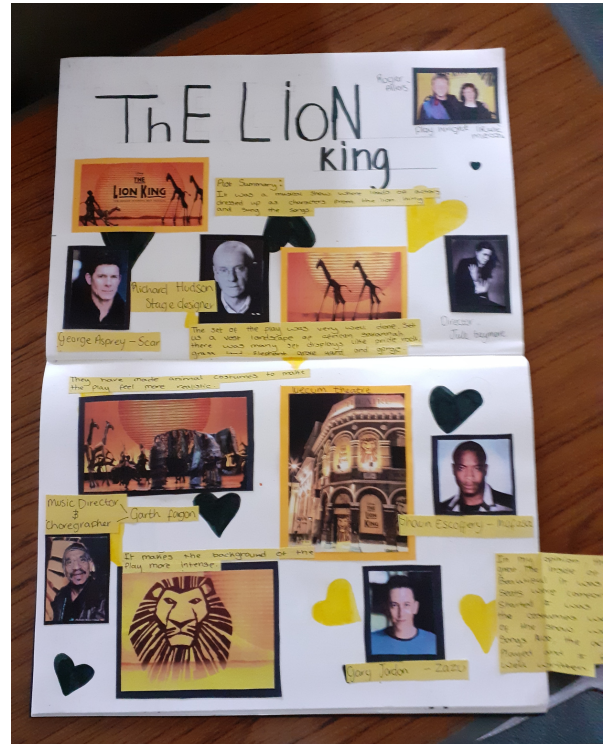
Art's Award



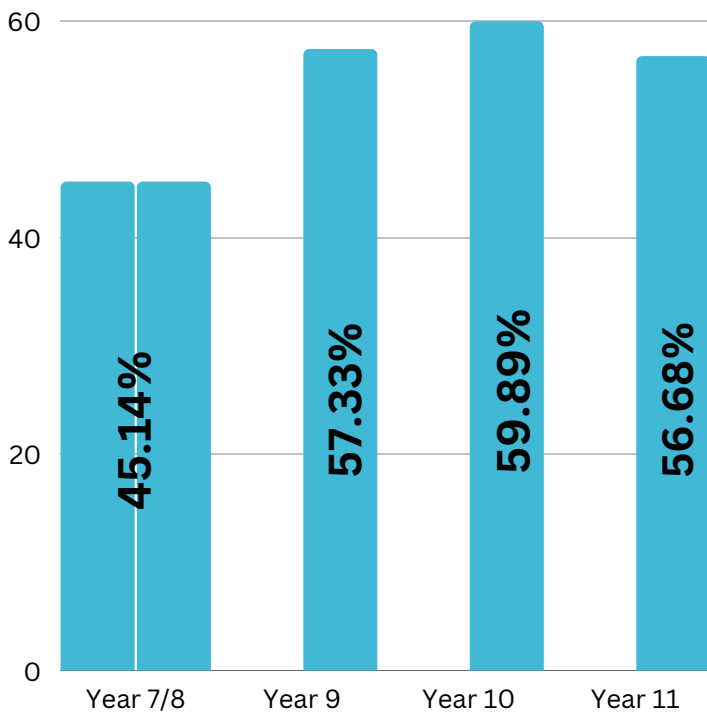
This year to achieve the Arts Award the Y11s were taken on a school trip to see the Lion King in theatre. It is story that is about overcoming the fear of taking responsibility.

The Y11s were challenged to write a review in poster form. They had to write about how the play was put together in order to summarise their poster and to write the final review.

Not only did they get to enjoy watching the play, it also showcased to the students African culture, beautiful themes, use of colours and the unique avant-garde style.



Attendance



Shout out to **RP8** and **TC10** for the highest attendance throughout the school year.

Shout out to **SP9** and **LM9** for the most improved attendance from the beginning of the academic year!

Shout out to **OCS11** for most improved punctuality!

You are all Superstars!

Congratulations !!

Congratulations to all the pupils who had 90% or better attendance over this academic year as well as those who have met their targets and made improvements throughout the duration of the year!

To encourage good attendance and punctuality, we offer incentives and rewards schemes if students are able to meet their individual targets.

This year we have taken students to Lady Dinah's Cat Café, The London Dungeon and for bubble tea in Camberwell.

These trips are based on what the students like/are interested in and are a fun experience for all involved.



Please ensure your child is able to participate in these activities by making sure they have **90%** or better attendance/meet their targets for the next term.

PSHE

Year 7s & 8s

.. have been learning about body awareness this term. They have touched on topics to do with puberty, period cycles and developing sexual awareness. Students also learnt about privacy and consent, FGM and forced marriages.

The students were able to show their understanding of the topic and explain in depth what consent is.



Year 9s

... have also been learning about body awareness, puberty, hormones and period cycles. We also raised awareness about 'period poverty' and mental health. We also discussed the importance of how to be more resilient.

The students are now able to express and speak about mental health and the importance of understanding your body and its needs.

Year 10

In year 10, the students have been learning about independence and creating influences. We also have discussed changing society and managing changes.

We had thought provoking discussions about identity, gender, stereotyping, sexual identity and physical and emotional changes. This has allowed the students to speak about different issues going on around them. Students are able to explain what a 'gender stereotype' is and what it means to have a sexual identity.



End of Term Certificates

Most Act of Kindness

SFD, LM, MH, SM

Home Learning

SFD, AB, TC



Interventions

RP, LM, MH, STP, TC

Improved Attendance

SP, LM, TC, OCS

Improved Behaviour

SM

Personal Development

TS, TAM, LM, TC, SR



Workshop Engagement

LM

PE

RP, MH, TME



Maths

TS, RP, LM, TC, AB, OCS, SM, CC

English

SFD, LM, TC, OCS

Science

SFD, RP, LM, SP, TC, OCS, PMC

Business

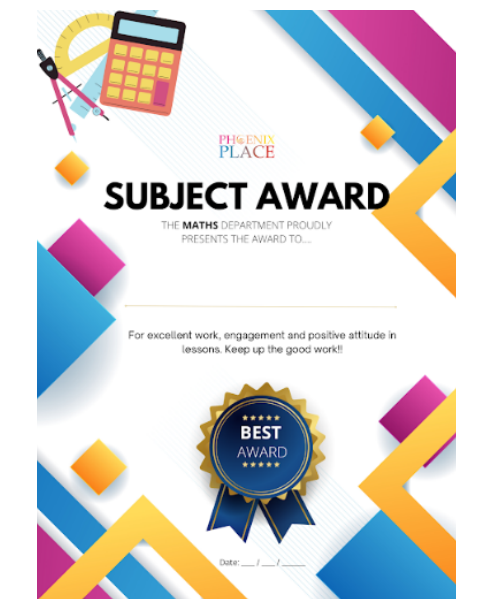
TC, PMC

ICT

LM, SS

Art

LM, DD



Prince's Trust

LM, OCS, SM, CC

PSHE

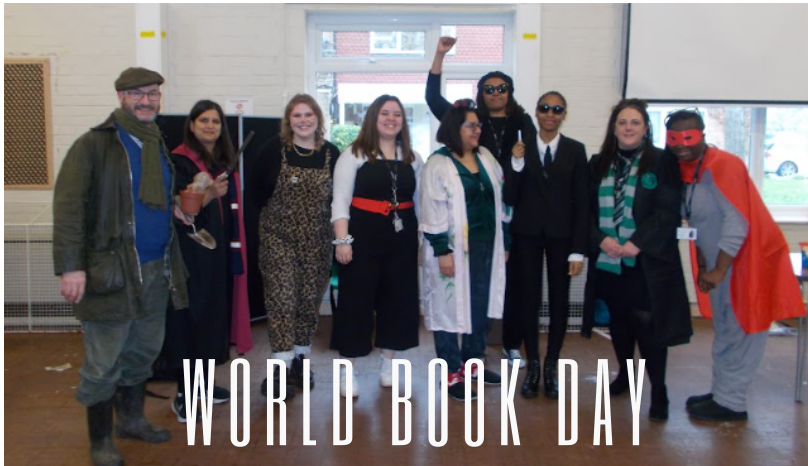
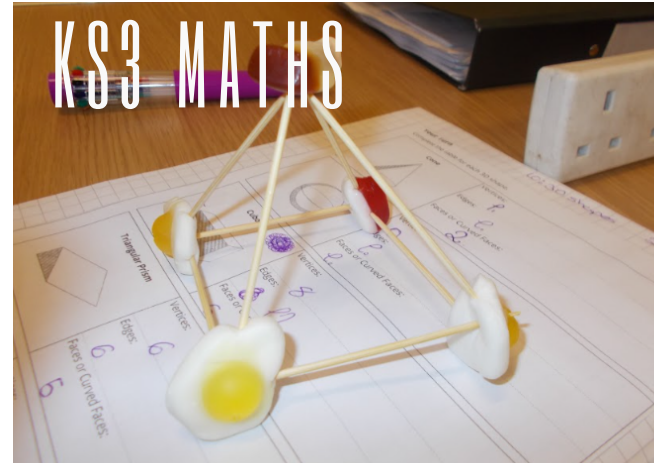
SFD, TC

Careers

LM, SM

WELL DONE!





Useful Info:

Term Dates



AUTUMN

SPRING

SUMMER

Autumn 1 Term 23

Students Start Dates:

Wed 6th Sept 23

Student Induction Meetings
(appointment times will be sent out nearer the time)

Mon 11th Sept 23

New students & KS3 (7-9) in

Tues 12th Sept 23

All students in

Last Day of Term

20th October

Half Term (2 Weeks)

23rd October - 3rd November

Spring 1 Term 24

Students first day back

4th January

Progress Meetings

4th January

Last Day of Term

9th February

Half Term (1 Week)

12th - 15th February

Summer 1 Term 24

Students' first day back

15th April

Progress Meeting

15th April

May Bank Holiday

6th May

Last day of Term

24th May

Half Term (1 Week)

27th - 31st May

Autumn 2 Term 23

Students' first day back

6th November

Last day of Term

20th December

Half Term (2 Weeks)

21st December - 3rd January

Spring 2 Term 24

Students' first day back

19th February

Last day of Term

28th March

Half Term (2 Weeks)

29th March - 15th May

2nd - 3rd April:

GCSE Intervention Club

Summer 2 Term 24

Students' first day back

3rd June

Progress Meeting

5th July

Last day of Term

25th July

PHOENIXPLACE DAILY VALUES



ORGANISATIONS TO CONTACT IF YOU NEED SUPPORT WHEN NOT AT PHOENIXPLACE

At Risk Of Harm?

If you feel that you, or any of your family or friends are in danger or at risk of harm, then **please call 999** or you can visit your nearest police station.

The addresses for the local area are:

Southwark Police Station
323 Borough High Street,
Southwark, London ·
0300 123 1212 ·
Opens 10 am

Metropolitan Police

Walworth Police Station
12-28 Manor Place, Walworth
0800 555111
Open 24 hours

Peckham Police Station

177 Peckham High Street,
Southwark, London ·
0300 123 1212
Closes 10 pm



Do you need Emotional support?

If you have any worries and concerns about yourself, or any of your friends & family, you can contact any of the organisations to the right.

Samaritans: 116 123 (open 24/7)

Young Minds: 0300 123 3393
(9am - 6pm, M-F)

Childline: 0800 1111
(7.30am - 3.30am every day)

Mind: Side by Side - Side by Side is an online community where you can listen, share and be heard.

<https://www.themix.org.uk/> to access group chat and discussion boards.

Seek counselling from **Kooth** for online support
(www.kooth.com Monday - Friday 12pm - 10pm)

thenest@groundwork.org.uk - 020 8138 1805 a free & confidential mental wellbeing advice and support for young people aged 11 - 25 in Southwark based in Peckham.

Are you worried about your Health?

If you are concerned about your health please speak to our SENCo (Dershna).

If you are worried about your physical or mental health and you need immediate treatment, you can visit your local A&E.

These are the addresses of the closest A&E departments.

These are the addresses of the closest A&E departments.

King's College Hospital

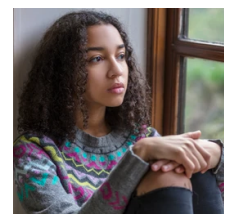
A&E Denmark Hill,
London, SE5 9RS

Tel: 020 3299 9000
Open 24 hours

St Thomas Hospital A&E

Westminster Bridge Road,
London, SE1 7EH

Tel 020 7188 7188
Open 24 hours



**CLASS
OF
2023**

**Goodbye
&
Good Luck!**

**TO ALL OUR FANTASTIC
YEAR 11S!**



FROM ALL THE STAFF TEAM @ PHOENIXPLACE