

# 10 YEARS ANNIVERSARY

## DEAR PARENTS/CARERS & STAKEHOLDERS,

I hope this email finds you in the best of health!

The end of the year has come quickly upon us as we wind down to Christmas and New Year Celebrations.

Once again we have had a busy term and we do have much to be thankful for and want to share some of the great work from students and staff over the past few months.

### HAPPY 10TH YEAR ANNIVERSARY!

September 2014 was a special time for PhoenixPlace as we officially opened our doors. Over the last 10 years we have been privileged to have been part of the personal and educational journey for many amazing young women.

We are thankful to all parents/carers who have worked alongside us as well as all the professionals who have also helped to improve the lives of our students.

We have so many inspirational stories to tell and we are grateful to be able to continue to support many more young women building their self-esteem and helping them to realise their potential.

### OFSTED

As you are aware we had our graded Ofsted Inspection Tuesday 10th - Thursday 12th December 2024.

Thank you to all our students and staff throughout this process and special thank you to all parents/carers & professionals for your support.

We hope to receive the report at some point in the new year.



### UNIFORM

Pupils are expected to wear the correct uniform at all times (other than specified non-school uniform days) while:

- On the school premises
- Travelling to and from school
- At out-of-school events or on trips that are organised by the school, or where they are representing the school (if required)

Uniform plays a valuable role in contributing to the overall ethos of the school and all students are to adhere to these expectations. Parents/cares can find more information about uniform on our website: <https://phoenixplace.co.uk/uniform>

### CONTACT OVER THE HOLIDAYS

The school will be closed over the Christmas holidays but should you have any concerns or queries during this time please contact [info@phoenixplace.co.uk](mailto:info@phoenixplace.co.uk). If your concern related to a safeguarding matter, please also see the contact information on our website which can be found at <https://phoenixplace.co.uk/safeguarding-1> where you can also find links to national and local support agencies and organisations.

I hope you enjoy this Autumn 24 edition which highlights some of the great work that students have been doing over the this term. We look forward to the break but we hope everyone has a safe and enjoyable holiday. Health and prosperity for the New Year and we look forward to welcoming all our students in 2025 :-)

Take care,

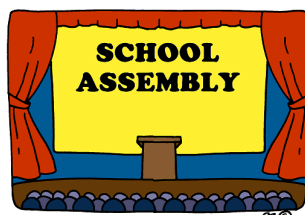
**Sophie Nelson**  
Headteacher



### Calendar Dates

Friday 3rd January - Progress  
Meetings Day  
See more dates inside

## SOME OF THE TOPICS WE LEARNT IN ASSEMBLY THIS TERM



Assemblies at PhoenixPlace are always interesting and fun to take part in.

Students participate in debates and present national and local topics



## WHAT WE HAVE BEEN LEARNING THIS TERM

### ENGLISH

#### KS4

Year 11 students created and presented a whole school assembly on PhoenixPlace first value of Respect.



#### KS3

In English this term, years 7 8 and 9 have been studying the novel 'Holes' by Louis Sachar.

We have been focusing on class reading and developing confidence.

We have been learning about writing to persuade and inform, culminating in an assessment by way of a leaflet at the end of term.



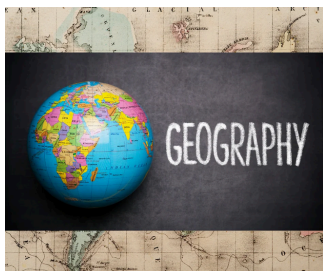


## WHAT WE HAVE BEEN LEARNING THIS TERM

### HUMANITIES

Humanities students this term have been studying **Geography**;

Year 7 and 8's have been learning Map Skills whilst Year 9's have been completing a Case Study of Russia.

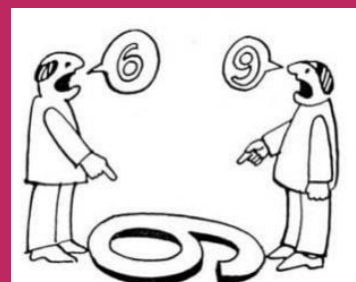
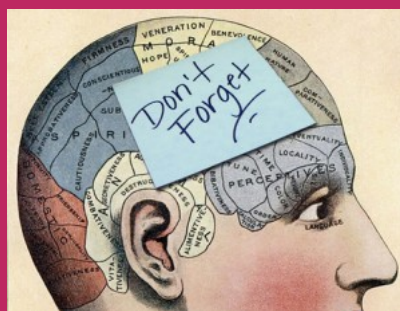


### Psychology

This term our GCSE students have been focussing this term on Memory, Perception and Social Influence. Students have enjoyed learning about different social experiments and have even carried out their own on teachers!



PSYCHOLOGY



### BUSINESS & ICT

**Empowering the next generation of innovators, problem solvers and digital citizens!**

#### Different Types of Market Research

Year 11 students created a larger than life flow chart which illustrated the different types of market research.

Students then wrote an email about the different types, the importance, advantages and disadvantages of market research.



## WHAT WE HAVE BEEN LEARNING THIS TERM

### CAREERS

#### DIGITAL DAY WITH JELLYFISH: A GLIMPSE INTO THE WORLD OF DIGITAL CAREERS



Years 10 and 11 had an exciting visit from Jellyfish as part of the BIMA Digital Day, a fantastic event aimed at inspiring students and giving them a taste of what it's like to work in digital industries.

The event brings digital professionals into schools to share their expertise and introduce students to the endless opportunities in the world of digital careers.

For the day, our students became part of a digital agency team! Their mission? To help Burberry make its iconic trench coats more appealing to a younger audience, while highlighting the brand's "Made in Britain" and eco-friendly efforts.

#### The challenge was broken down into three key steps:

1. Explore the Market: Students researched the target audience and identified what makes fashion brands stand out in today's digital world.
2. Bring the Idea to Life: They worked on creative strategies to connect with younger customers while focusing on sustainability and British craftsmanship.
3. Pitch the Idea: Finally, students presented their ideas just like real-life marketing teams do, showing off their creativity and problem-solving skills.

It was an inspiring day that gave everyone a sneak peek into what it's like to work in the fast-paced world of digital marketing and design. Who knows - maybe one of our students will be working at Jellyfish or a leading digital agency in the future.



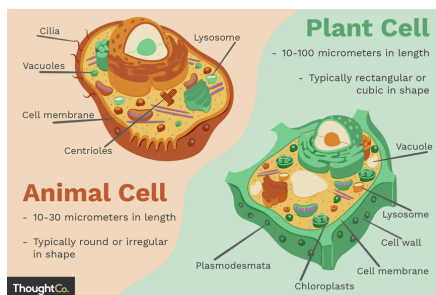


## Science

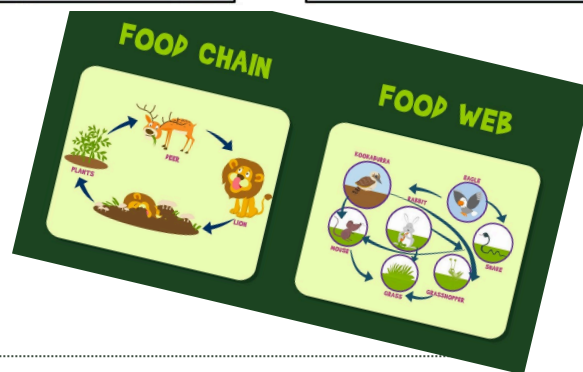
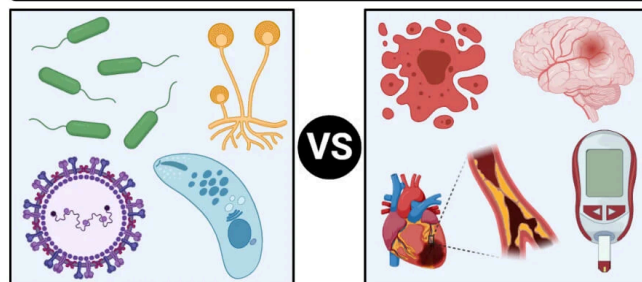
This term, year 11's have been working really hard and focusing on their GCSE mock papers ready for their practice exam in February.

The other year groups have all been working hard learning about exciting topic such as communicable diseases and non communicable diseases; food chains and food webs; healthy eating, and animal and plant cells.

All the students have worked really well in completing the units.



## Communicable and Non-Communicable Diseases



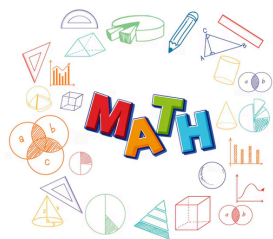
## HISTORY

This term, our GCSE students have been learning about the Civil Rights Movement in the USA during the 1950's and 1960's.

We looked at factors that helped or hindered the movement and students made final posters on this which were brilliant!



## WHAT WE HAVE BEEN LEARNING THIS TERM



In maths this term years 7, 8, and 9 have been looking at fractions, which includes adding, subtracting, multiplying and dividing.

Year 10 has been looking at substitution, formulae and equations.

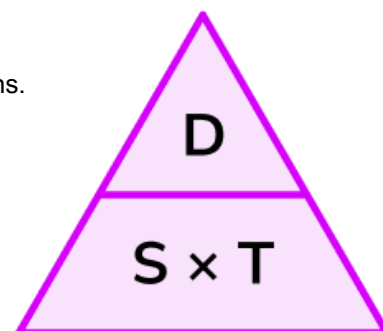
Year 11 has been doing compound measures and sequences.

$$\frac{1}{5} + \frac{2}{5} = \frac{3}{5}$$

**Equation**

$$x = \frac{-b \pm \sqrt{b^2 - 4ac}}{2a}$$

Expression      Expression



KS4

## ATTENDANCE & PUNCTUALITY SUPERSTARS

Well Done!!: Divine; Caitlin; Summer; Astio; Sian; Abia



### Did you know...

Honeyguide

If your child's attendance during the school year was...

Your child lost approximately...

This is the same as approximately...

95%

9 days from school

50 lessons

90%

19 days from school

100 lessons

85%

29 days from school

150 lessons

80%

38 days from school

200 lessons

75%

48 days from school

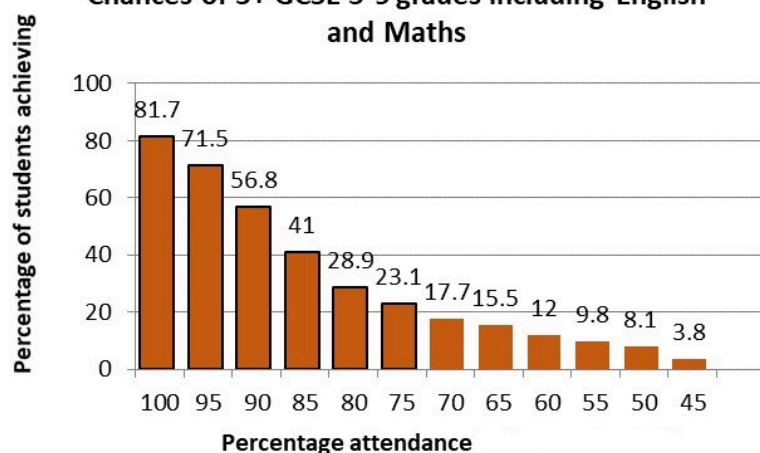
250 lessons

Parents/carers should be letting the school know before school starts (by 9.15am) of any absences and reasons.

Our Pastoral Team will follow up with our persistent absence procedures for any students whose attendance is below 90% which may include involvement of external education welfare services, legal proceedings and possible fines.

**SCHOOL NUMBER:**  
0207 703 7189

### Chances of 5+ GCSE 5-9 grades including English and Maths



### ARE YOU REACHING YOUR POTENTIAL?

As you are aware there is a clear link between poor attendance and lower academic achievement??

Our aim is that all students are learning and progressing well and we can only achieve this if they are in attendance at school, attend all lessons and engage.

Evidence shows that the students with the highest attendance throughout their time in school gain the best GCSE and A Level results.

### School Day

Mon-Fri

Start: 9.45am - End: 2.45pm

Breakfast

9.45am-10.10am

(Kitchen closes at 10.05am)

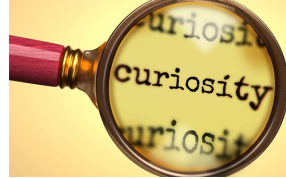
**"Showing up is the first step towards success. The second step is doing the work."**  
– Unknown

# PHOENIXPLACE VALUES

**RESPECT, EMPATHY, AMBITION, CURIOSITY, HUMILITY**



growth aim imagination  
opportunity effort dream excellent teamwork  
hope ambition faith  
trust success achieve steel wish  
work determined belief



'Character Education'

## ORGANISATIONS TO CONTACT IF YOU NEED SUPPORT WHEN NOT AT PHOENIXPLACE

### At Risk Of Harm?

If you feel that you, or any of your family or friends are in danger or at risk of harm, then **please call 999** or you can visit your nearest police station.

#### The addresses for the local area are:

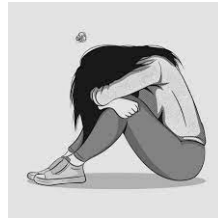
Southwark Police Station  
323 Borough High Street,  
Southwark, London ·  
0300 123 1212 ·  
Opens 10 am

#### Metropolitan Police

Walworth Police Station  
12-28 Manor Place, Walworth  
0800 555111  
Open 24 hours

#### Peckham Police Station

177 Peckham High Street,  
Southwark, London ·  
0300 123 1212  
Closes 10 pm



### Do you need Emotional support?

If you have any worries and concerns about yourself, or any of your friends & family, you can contact any of the organisations to the right.

**Samaritans:** 116 123 (open 24/7)

**Young Minds:** 0300 123 3393  
(9am - 6pm, M-F)

**Childline:** 0800 1111  
(7.30am - 3.30am every day)

**Mind:** Side by Side - Side by Side is an online community where you can listen, share and be heard.

<https://www.themix.org.uk/> to access group chat and discussion boards.

Seek counselling from **Kooth** for online support  
([www.kooth.com](http://www.kooth.com) Monday - Friday 12pm - 10pm)

[thenest@groundwork.org.uk](mailto:thenest@groundwork.org.uk) - 020 8138 1805 a free & confidential mental wellbeing advice and support for young people aged 11 - 25 in Southwark based in Peckham.

### Are you worried about your Health?

If you are concerned about your health please speak to our SENCo (Dershna).

If you are worried about your physical or mental health and you need immediate treatment, you can visit your local A&E.

These are the addresses of the closest A&E departments.

These are the addresses of the closest A&E departments.

#### King's College Hospital

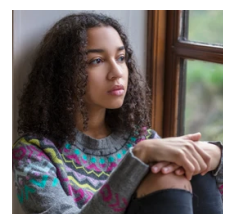
A&E Denmark Hill,  
London, SE5 9RS

Tel: 020 3299 9000  
Open 24 hours

#### St Thomas Hospital A&E

Westminster Bridge Road,  
London, SE1 7EH

Tel 020 7188 7188  
Open 24 hours





# Useful Info:

## Autumn

### Autumn Term 1 /24

#### Students Start Dates:

Fri 6th Sept 24  
Student Induction Meetings

Mon 9th Sept 24  
KS3 (7-8s) in

Tues 10th Sept 24  
KS3 & Yr9s in

Wed 11th Sept 24  
All students in

**Last Day of AUT1 Term**  
Fri 18th Oct

**October Half Term (2 Weeks)**  
21st Oct – 1st Nov

## Spring

### Spring Term 1 /25

#### Students Start Dates:

Fri 3rd Jan  
Progress Meetings

**Last Day of SPR1 Term**  
Fri 7th Feb

**February Half Term (1 Week)**  
Mon 10th – Fri 14th Feb

## Summer

### Summer Term 1 /25

#### Students Start Dates:

Tues 22nd April  
Progress Meetings

**May Bank Holiday**  
Mon 5th May

**GCSE Exams Window**  
08/05/2025 – 19/06/2025

**Last day of SUM1 Term**  
Fri 23rd May

**Half Term (1 Week)**  
Mon 26th – Fri 30th May

### Autumn Term 2 /24

#### Students Start Dates:

Mon 4th Nov 24  
All students in

**Last Day of AUT2 Term**  
Fri 20th Dec

**Christmas Half Term (2 Weeks)**  
23rd Dec – 2nd Jan 25

### Spring Term 2 /25

#### Students Start Dates:

Mon 17th Feb  
All students in

**Last Day of SPR2 Term**  
Fri 4th Apr

**Easter Half Term (2 Weeks)**  
Mon 7th – Mon 21st Apr

**GCSE Intervention Club**  
Tues 8th – Wed 9th Apr

### Summer Term 2 /25

#### Students Start Dates:

Mon 2nd June  
All students in

**Progress Meetings**  
Fri 4th July

**Last day of SUM2 Term**  
Fri 25th July

*Thank you for all your support...*



*...from all the staff at PhoenixPlace!!*

PH<sup>OX</sup>ENIX  
PLACE