



Save the date

Nov 2-4, 2012



Annual Women of the ELCA
Convention and Gathering

(to be held in the Inland Empire)

Food, Fellowship, Fun
and a little business too!

More information to follow in the April Pacifica Partners

Greetings from your Pacifica W-ELCA President

March 2012

page 2



My journey continues this Lenten season.

In addition this month our Adult Sunday School class began a 6 week Video Bible Study called "Prayer: Does It Make Any Difference?" This study by Yancey really makes you think. What's your experience with Prayer? When do you usually pray?

As I mentioned last month I was in Chicago for four full days attending the Women of the ELCA Conference of Synodical President's meetings. Our theme was "The Good News Guide." Sixty-Four (64) women plus the churchwide board and churchwide staff were in attendance. My roommate was Kandy Pflaster, President of the Nebraska Synodical Women of the ELCA. As she stated in "Expressions", Nebraska's Newsletter, "God is there for you, just let him open all those doors of excitement." For those who don't know, Nebraska Women of the ELCA is our Partner Synod. Within this Partner Relationship we are lead to wonderful friendships, fellowship, conversations, maintain community and even pray for one another. We met together at times and then in groups for Hot Topic Workshops, Regional Caucus Times (we are Region 2C of 1-9 Regions), Money Matters (Stewardship), Religion Section (Worship), Book Review, Headliners (Plenary with guest speakers), Top Stories (25th Anniversary news), Daily Word Search (Bible Study), Milestones (Recognitions), Let's Get Visible (Facebook, Pinterest, Twitter) and Entertainment (a funny female comedian and motivational speaker who knows how to entertain, inspire and make people laugh). WOW, we were busy

I asked for your prayers for our recent Pacifica's March 3rd event at Bethlehem Lutheran, Los Alamitos, CA. Your prayers really were answered. We had 85 registered. Everything went well and I thank everyone who planned and helped make this event a success. I am happy to report that we took a pick-up truck full of Love Gifts and \$1000.00 gift including cash, checks and gift cards to Lutheran Social Services Community Care Center at St. Olaf Lutheran Church. Garden Grove, CA. I met with Bea Rea the LSS Program Director/ Emergency Assistance and her husband who gave me a tour of the facility. She was so happy and sent us a wonderful Thank You for our Love Gifts. I hope you all will continue to JOURNAL.

Within this newsletter please see important information and flyers on our upcoming Cluster events around our synod. Please plan to attend and bring a friend.

Please keep our SWO Board and Convention planning team in your prayers the next coming months. We are excited to announce that Convention will be somewhere in the Inland Empire area, November 2-4, 2012. We are awaiting confirmation on our site!

Blessings,

Andrea Campbell



Prepare for 25th anniversary by celebrating Women's History Month

Linda Post Bushkofsky

March 2012

Page 3

Editor's note: A version of this piece appears in the March 2012 issue of Gather, gathermagazine.org.

Women of the ELCA is set to observe the 25th anniversary of its creation, and we remember the Lutheran women who have paved the way for us today. With the rights and freedoms we enjoy, it's all too easy to ignore the struggles that our foremothers endured, even those foremothers who are just a generation or two older than we are. Consider observing Women's History Month next month in a way that helps prepare for our year long 25th anniversary observance that begins this June. Here are a few ideas to get you started.



Use Women's History Month (March) to collect the stories of women in your congregation. Then publish their stories as part of your anniversary celebration. Ask them to recall women's roles in the congregation and church during their lifetimes. How have they changed? Ask if they were involved in the women's movement in the 1960s and 1970s. How did that involvement influence their faith journey? If you record their stories, consider creating pod casts or videos to share, maybe even creating a composite that could be aired as a kick-off to the 25th anniversary year.

Record the dreams and hopes of teens and young women in your congregation, honoring their aspirations. Invite younger and older women alike to imagine what the next 25th years of Women of the ELCA will include. Pair up those young women with older women, offering mentoring opportunities. Together older and younger women can live out the purpose of Women of the ELCA in supporting "one another in our callings."

Select a book to read or video to watch and follow it with a discussion. You might consider the memoir *Mighty Be Our Powers* by Leymah Gbowee, a featured speaker at our triennial gathering last summer who was awarded the 2011 Nobel Peace Prize. Upon reading Gbowee's book, churchwide executive board member Phyllis Rude of Anchorage, Alaska, remarked, "her book makes me ask myself 'What more can I do besides talk and pray about problems I see around me?'" Use that question to frame a kickoff to the 25th anniversary year where each participant in your congregational unit makes an intentional commitment to move beyond talk and prayer into action. Plan ways that you can inspire and encourage one another throughout the year.

We're going to have a great celebration of Women of the ELCA's first 25 years. Plan now to take an active role in that celebration.

For more information, visit womenoftheelca.org. (article used by permission from *Women of the ELCA*)

Did you know that each year the Women of the ELCA gives out grant and scholarships to agencies and nonprofits supporting healing and wholeness for women all ages? They can apply for a grant or scholarship to help support girls in developing life skills, training, education, and other resources. You are probably already aware of an organization that could use some extra funds to support their efforts in helping girls and women. Begin planning now to apply for the grants for next year. See the womenoftheelca.org website for more information.

Your offerings help to improve the lives of girls and women.

March 3rd Event Recap

March 2012

Page 4



*Rev. Nancy Gordon
Director of CLH Center
for Spirituality and Aging*



*Bethlehem Lutheran, Los Alamitos,
site of our March 3rd event.*



Workshop Interaction!



*Closing worship with
Paula Rennegarbe*



*President and CEO of LSS,
Ellen Waild*



*A message from churchwide
board, brought to us by Dona
Jenkins*

Happenings...

March 2012

Page 5



Big Bear, Mariposa, Raincross Cluster Event

Saturday, April 14, 2012

**Our Savior's Lutheran Church
1320 W. Williams Street, Banning**



"HATS OFF TO YOU"

Registration/Coffee 9:00 a.m

Lunch will be provided

Closing 1:00 p.m.

\$5.00 Registration (payable at the door)

Call: Verlette Brummell (951) 922-6206

make reservations by April 7th

If you have a hat, please wear it!!



Rejoice, Saddleback and Son & Surf Clusters present

"Discipline Disciples"

Guest Speaker: Pastor Cheryl Corneliusen

1 Corinthians 9:24: Run in such a way you'll win it to stay the course for Jesus sake.

Date & Time: April 14, 2012, Registration & Breakfast/8:30am, Program/9am

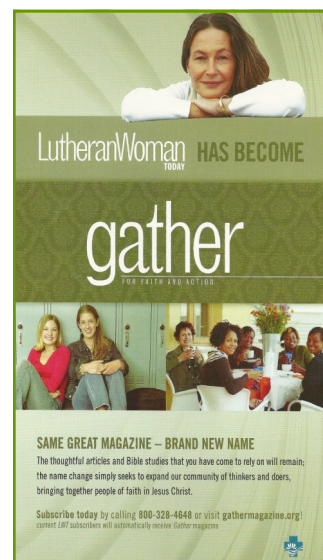
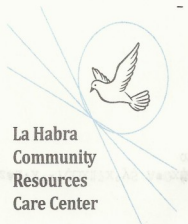
St. Paul, Fullerton, 111 W. Las Palmas Drive, Fullerton, CA 92835

Cost: \$6.00 (at the door)

Reservations: MaryAnn Messick
(949) 240-7772, by April 9, 2012

Love Gifts:

Peanut Butter, Canned Tuna, Cereal, Canned Fruit,
Spaghetti Sauce and Toothpaste



PACIFICA PARTNERS provides news and information to congregational units of the Pacifica Synod. *Pacifica Partners* is published monthly except for July/August and November/December, which are combined issues. Copies are distributed as a courtesy to each congregational unit (CU) in the Pacifica Synod. It is also sent to Women of the ELCA churchwide office, other SWO presidents, Synodical Bishop, current and former board members.

Address changes and corrections should be sent to the Secretary:

Juli Patten

84-740 Kili Dr. #1123, Waianae, HI 96792

Email: alohaboo@hawaii.rr.com



SWO President Andrea Campbell in Chicago at the "Conference of Presidents". Picture above with Dona Jenkins (Newly elected to the churchwide board. Formerly SWO Board Member).

To the right Andrea Campbell is pictured with Kandy Pflaster, SWO President of Nebraska Synod (our sister synod).

Purpose Statement



Women of the Evangelical Lutheran Church in America

*As a community of women,
created in the image of God,
called to discipleship in Jesus Christ,
and empowered by the Holy Spirit,
we commit ourselves to grow in faith,
affirm our gifts,
support one another in our callings,
engage in ministry and action,
and promote healing and wholeness in
the church,
the society, and the world.*



Find us on Facebook 



- | | |
|--------------------|--|
| April 14, 2012 | Rejoice, Saddleback and Son & Surf Cluster Event
Location: St. Paul Lutheran Church, Fullerton
Registration: 8:30am, with Program at 9am |
| April 14, 2012 | Big Bear, Mariposa & Raincross Cluster Event
Location: Our Savior Lutheran Church, Banning |
| April 21, 2012 | Harvest Cluster Event "Coast Kids"
Location: Bethlehem Lutheran, Encinitas
Time: 9am Cost: \$8/brunch (pay at door) |
| May 17-19, 2012 | Pacifica Synod Assembly
Locations: Irvine Marriott
More information: www.pacificasynod.org |
| May 20, 2012 | Friendship Tea
Location: King of Kings Lutheran Church, Oceanside |
| June 9 or 16, 2012 | First Ladies Dolls
Location: King of Kings Lutheran Church, Oceanside
(corrected date to follow) |
| June 23, 2012 | SWO Board Meeting
Location: Our Savior, Banning |
| October 2012 | Rejoice, Saddleback and Son & Surf Cluster Event
More information to follow |
| October 20, 2012 | LSS Walk
Location: start at King of Glory Lutheran Church, Fountain Valley |
| November 2-4, 2012 | Pacifica Women of the ELCA Convention
Location: Inland Empire |



Mighty God, you open wide your hands and sustain all living things.

Open our lives that we might be fed by your Word; in Christ's name we pray. Amen.



PACIFICA WOMEN OF THE ELCA

2010-2011 Synodical Board Members

March 2012

Page 8

President: Andrea Campbell
6555 Jaluit Street
Cypress, Ca 90630
(714) 891-2556 hm, (714) 296-3342 cell
Email: andreacampbell@verizon.net

Vice President: Karen Ronchetti
8305 Magic Circle
Huntington Beach, CA 92646
(714) 654-8919 cell
Email: welca@verizon.net

Secretary: Juli Patten
84-740 Kili Dr. #1123
Waianae, HI 96792
(808) 590-8262 cell & hm
Email: alohaboo@hawaii.rr.com
Mentor: *Hukilau Cluster*

Treasurer: Inga Sanders
16370 Jupiter Circle
Westminster, Ca 92683
(949) 463-6642 cell & hm
(562) 495-6600, ext 1035 (work)
Email: inga.sanders@gmail.com

Board Members

Verlette Brummell
1651-B Beaver Creek
Beaumont, CA 92223
(951) 922-6206 hm, (562) 400-4636 cell
Email: vrbrummell@aol.com
Mentor: *Big Bear Cluster*

Sue Connors
251 Rancho Drive, Unit D
Chula Vista, Ca 91911
(619) 427-6033 hm, (619) 972-1795 cell
Email: s.connors1@cox.net
Mentor: *Sonshine West Cluster*

Tina Gates
40670 Ventana Court
Palm Desert, Ca 92260
(760) 674-8677 hm, (760) 777-0853 cell
Email: tgates@hope-lutheran.com
Mentor: *Mariposa Cluster*

Loretta Gerken
6355 Paseo Coronado
Carlsbad, Ca 92009
(760) 476-3634 hm
Email: wm_gerken@prodigy.net
Mentor: *Harvest Cluster*

Violet Quist
13300 Del Monte Drive, #7-M
Seal Beach, CA 90740
(562) 431-8339 hm, (562) 233-9450 cell
Email: vmquist@gmail.com
Mentor: *Rejoice, Son & Surf Cluster*

Paula Rennegarbe
20701 Beach Blvd., #246
Huntington Beach, Ca 92648
(657) 464-9234 hm, (866) 437-4062 cell
Email: paula.oline@live.com
Mentor: *Saddleback Cluster*

Becky Shurson
13848 Meadow View Lane
Yucaipa, CA 92399
(909) 790-4864 hm, (909) 496-2580 cell
Email: bshurson@verizon.net
Mentor: *Raincross Cluster*



Informational Web Sites for “your” use...

March 2012

Page 9

www.pacificasynod.org

Pacifica Synod

www.elca.org

This will access the national church wide office

www.womenofheelca.org

(Note: New domain name for churchwide website of the Women of the ELCA; *Caf  *, for free website for women 20-35 is part of this website).

www.gather.org

This website will access Gather (formerly Lutheran Women Today) magazine directly.

www.lwr.org

Lutheran World Relief

(Ever wanted to know where the quilts go that your units have made or the school and health kits that you assembled and sent to LWR)?

www.thebreastcancersite.com

Click on this site once a day to provide free mammograms for those who otherwise would not be able to have them.

www.cherishchildren.org

Information on Cherish the Children

www.giveaminute.org

Click on this site once a day and the sponsor will contribute funds for a minute of care for the needy Indian children of the Tarahumara Children’s Hospital in Creel, Mexico. This site has a mission information link and photo gallery which shows pictures of the area as well as some of the children. This site also links to the Hunger Site where sponsors will give a cup of grain for a click.

Christina Watson

Lutheran Maritime Ministries. Provides “special” Christmas gift to seamen.
(562) 431-1112

The deadline is..

April 6th, 2012

for Pacifica Partners

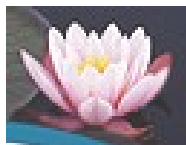
Email: welca@verizon.net



Pacifica Synodical Women's Organization of the
Women of the Evangelical Lutheran Church in America
8305 Magic Circle
Huntington Beach, CA 92646

NON-PROFIT ORG
U.S. POSTAGE
PAID
Huntington Beach, CA
PERMIT No. 456

Dated Material-Please Do Not Delay
Return Services Requested



What's Inside

<i>Convention News</i>	<i>Page 1</i>
<i>President's Message</i>	<i>Page 2</i>
<i>Celebrating 25 yrs of WELCA</i>	<i>Page 3</i>
<i>March Event - Recap</i>	<i>Page 4</i>
<i>Happenings . . .</i>	<i>Page 5</i>
<i>Purpose Statement & more</i>	<i>Page 6</i>
<i>Calendar of Events</i>	<i>Page 7</i>
<i>Board Information / Mentor List</i>	<i>Page 8</i>
<i>Informational Sites</i>	<i>Page 9</i>