



Karen Ronchetti, Editor

Pacifica Partners

November/December 2011

Volume 21 Issue Number 10



*Pacifica Women of the ELCA present
"Life's Spiritual Journey"*

Isaiah 41:10

*So do not fear, for I am with you; do not be dismayed, for I
am your God. I will strengthen you and help you.*

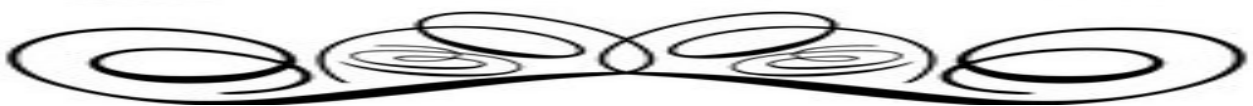
March 3, 2012

*at Bethlehem Lutheran Church, 3352 Katella Ave, Los Alamitos, CA
8am to 4pm (includes Continental Breakfast and Lunch)*

*Speaker: Rev. Nancy Gordon,
Director California Lutheran Home Center for Spirituality and Aging*

*Love gifts: Lutheran Social Services
A Day full of Loving Fellowship * Heart Warming Devotion
Hands on Experiences*

*See page 3 for Registration
More information to follow in January's Pacifica Partners*



Greetings from your Pacifica W-ELCA President

November/December 2011

page 2



Season Greetings from your Pacifica W-ELCA President:

Thank you to everyone who helped to make our November 2011 Convention a very meaningful week-end of Bible Study, workshops, fellowship with new and old friends and other opportunities that enabled us to live our theme, **“God made each of us for a Purpose.”**

Our evening bedtime devotions were awesome. Our Banner display and opening hymn “Will You Come And Follow Me” was so inspirational when sung by all the Women of Pacifica. Enclosed in this Pacifica Partners, is the Sunday morning Convention Newsletter. It tells you all that happened. I always look forward to reading it and hope you will too. Special thanks to our office manager, Toni Douthitt, the editor.

A request was made to show offerings received. The Friday evening worship service (\$494.00), Saturday Praise Offering (\$1230.00 plus another \$500.00 by mail and Sunday morning worship service (\$683.00). A percentage of these offerings will go to ELCA Malaria Initiative, Lutheran Church in Ethiopia (Women’s Ministries), Women of the ELCA churchwide to help in ministries worldwide and to two church in Missouri devastated by tornados.

We continue our Journey this Advent season as I am reminded that we are invited once again to “Keep awake” and be alert and keep watch for the true master of our house and for all the surprising ways God might seek us out.

Your newly elected Board is already busy at work. A planning Team is meeting and ask that you **“mark the date”, Saturday, March 3, 2012 in Los Alamitos CA** for our March Event 2012 **“Life’s Spiritual Journey”** **Isaiah 41:10. Love gifts** will be collected for Lutheran Social Services and Leadership training will once again be back on the day’s agenda. Watch for more information in this and upcoming Pacifica Partners newsletter.

Please remember to send in your regular or year-end offerings to our treasurer, Inga Sanders @ 16370 Jupiter Circle, Westminster, CA 92683. ([Form A](#))

Also, have you remembered to send your Unit’s Thankoffering direct to Women of the ELCA churchwide in Chicago? ([Form B](#))

May each and everyone of you and your families have a Blessed Christmas.
May your Advent and Christmas days be joyful.

Happy New Year!

*Blessings,
Andrea Campbell*



Registration

November/December 2011

page 3

March 3, 2012

Bethlehem Lutheran Church

3352 Katella Avenue

Los Alamitos, CA 92109

(562) 460-3444



This event is from 8am - 4pm. Includes continental breakfast & lunch

Early Bird-postmark by 2/20	\$25.00
-----------------------------	---------

Postmark after 2/20	\$30.00
---------------------	---------

Make checks payable to:

Pacifica Women of the ELCA

Mail to:

Karen Ronchetti

8305 Magic Circle, Huntington Beach, CA 92646

(714) 654-8919

Please Print: (or affix an address label)

Name: _____

Address: _____

Telephone: () _____ Email: _____

Church: _____ Church City: _____

Remembering Convention 2011

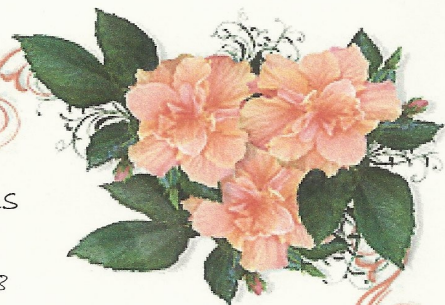
November/December 2011

Page 4

Pacifica Women of the ELCA 24th Annual Gathering and Convention November 4-6, 2011 Hampton Inn, San Diego, CA

"God made each of us
for a purpose.

Psalms 138:8



Dear Best Friends....

What an inspiring and spirit filled weekend! With God's love and grace he brought us all together to show us how we were all made for a purpose!

With a weekend packed full of activities, there was something for everyone to enjoy. While each of the activities were different, each one was centered around the same message of God's love for us, our love for God, and our love toward one another.

Racial Justice Advocacy

Friday started off with a couple of fascinating workshops. One of those workshops was Racial Justice Advocacy given by Inez Torres



Davis. Inez inspired us all to open our eyes to injustice and to speak out against any form of racism.

We are united as Sisters in Christ.

Here is what she had to say about the workshop:

"Hope in the Gospel of Jesus Christ drives us to look for God's will on earth. As we grow as ambassadors for Christ, we

learn part of our gospel call is the call to be counter-cultural. Racial justice advocacy as part of our call directs us to focus on changing systems, institutional practices, and policies so that we may be part of making racially equitable outcomes a life-changing reality.

Our shared strength is that we are women. Through compassion for ourselves and each other, we learn to identify the ways racial oppression manifests itself similarly to our shared gender oppression. This shared gender oppression is our bridge for multiplied understanding of how racial oppression works through institutions and systems.

Thank you for your hospitality and wonderful response to the message of hope at the core of racial justice advocacy! You humble me. I praise God for you. May God's Holy Spirit lead us to work for justice!"

— Inez Torres Davis

Communication

by Juli Patten

Are you a lion do you roar at injustice? Are you a turtle great at details and move at your own pace? You must be a chameleon, ever changing and adaptable. Would you say you are an eagle who loves to be the leader? If you have ever wondered about your animal personality you would have learned a thing or two in this workshop. We also played ball and found

out some very interesting facts about each other.

Multigenerational Keys

by Juli Patten

Traditionalist, baby boomer, Gen X or Gen Y what are you? Each of us is affected by the events that shape our lives and the events we live through. If you understand these differences you can have more successful gatherings and even grow your church. If you would like the handouts from either of these workshops you can email me at Alohaboo@hawaii.rr.com

Chrismons Gifts

Another highlight of the weekend were the creation of all the beaded Chrismons gifts for the 2 churches in Joplin, MO that were devastated by tornados earlier this year. The 57 beaded ornaments were created to help decorate the Christmas trees this holiday season in the churches. In addition to the beaded ornaments, 36 decorated Christmas balls will be included. Thank you for all the hard work!

>Welcome to the Board!
Newly elected
board members are
Paula Rennegarbe
Sheryl Matthews

(Continued on page 2)



Remembering Convention 2011

November/December 2011

Page 5

"God made each of us
for a purpose.

Psalms 138:8



(Continued from page 1)

President's Message:

I am very pleased that we could continue our faith journey together with the wonderful opportunities presented (bible study, workshops, crafts, worship and fellowship).



We are so fortunate to be able to enjoy the talents our presenters showed.

Your presence and enthusiasm was such a gift.

Thank you to the board for their untiring efforts in making this week-end theme "Promise, Purpose, Praise, and Prayer" so meaningful to everyone.

Blessings,
Andrea Campbell
President

Pastor Karla's Re-Cap

God made each of us for a purpose: to love God through serving God's people; proclaiming God's love for the world in word and deed. God equips us to fulfill our purpose, giving us the tools and talent we need to BE the blessing God intended. What are the tools? God gives us the Word.

Psalms 1 reminds us to "chew on" The Word (expressed as God's Law in the Old Testament) that instructs us on how to live in harmony with God, with each other and with the world God made.

When we
"chew on the
Word" we are

☆☆☆☆☆☆☆☆☆☆☆☆☆☆☆☆☆☆☆☆
☆☆ **Wowzers!** ☆☆☆
☆☆ **The Silent Auction raised over** ☆☆☆
☆☆ **\$1100.00** ☆☆☆
☆☆ **What an exciting time!** ☆☆☆
☆☆☆☆☆☆☆☆☆☆☆☆☆☆☆☆☆☆☆☆

well nourished; strengthened for whatever life brings, and like a tree growing by a stream, will bear fruit in due season no matter what hardships may come. Psalm 138 is a prayer of thanksgiving; but wait, not just in good times! It is a prayer that reminds us to be thankful ALL THE TIME and that God's purpose will not be prevented by times of trouble. Cling onto faith to drive out fear. Worship and pray with thanksgiving in our hearts rather than fear and dread on our lips! Philippians 4:4-7 and Job also remind us, contrary to popular culture both then AND now, that our task is to rejoice in God always.

Special Guests

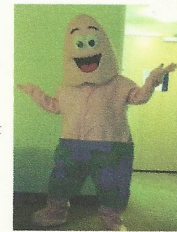
Charlene Spillmann delights in serving as the churchwide representative to synodical conventions and sharing her faith story enthusiastically to further encourage women to become more involved in the work of their congregational units as well as their synodical organizations. She invites all women to be totally aware



of their God-given talents and gifts, using them to the fullest to promote wholeness and healing throughout the church, the community and the world.

Providing a hilarious evening of entertainment as "Bold Mama," she brought a smile to even the most conservative Lutheran woman.

Another very special guest at Saturday's banquet traveled in on the tide! Patrick Star swam in from Bikini Bottom to get all the participants excited about the WELCA convention in Honolulu, HI in 2012!



Message from Newly Elected Women of the ELCA Churchwide Executive Board Member

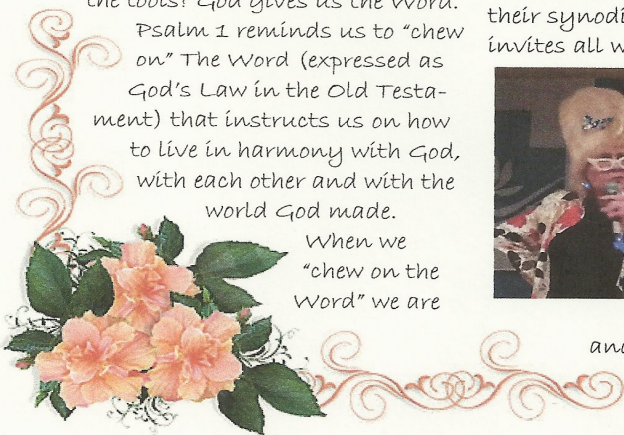
Dona Jenkins:

If you have any questions or concerns that I can help with, please feel free to e-mail me at donajenkins@charter.net

Thank you to all who donated Love Gifts for the Veterans Village of San Diego. The representative, Darcy, from the Veterans Winter Shelter, spoke about all of the success the Not-For-Profit organization in providing many services for homeless Veterans.



God's peace to you and yours, see you next year in HAWAII!



Something to Ponder...

November/December 2011

Page 6

10 Commandments For A Great Life

- 1) *Prayer is not a "spare wheel" that you pull out when in trouble, but it is a "steering wheel" that directs the right path throughout.*
- 2) *So why is a Car's WINDSHIELD so large and the Rear view Mirror is so small? Because our PAST is not as important as our FUTURE. So, Look Ahead and Move on.*
- 3) *Friendship is like a BOOK. It takes few seconds to burn, but it takes years to write.*
- 4) *All things in life are temporary. If going well, enjoy it, they will not last forever. If going wrong, don't worry, they can't last long either.*
- 5) *Old Friends are Gold! New Friends are Diamond! If you get a Diamond, don't forget the Gold! Because to hold a Diamond, you always need a Base of Gold!*
- 6) *Often when we lose hope and think this is the end, GOD smiles from above and says, "Relax, sweetheart, it's just a bend, not the end!"*
- 7) *When GOD solves your problems, you have faith in HIS abilities; when GOD doesn't solve your problems HE has faith in your abilities.*
- 8) *A blind person asked St. Anthony: "Can there be anything worse than losing eye sight?" He replied: "Yes, losing your vision!"*
- 9) *When you pray for others, God listens to you and blesses them, and sometimes, when you are safe and happy, remember that someone has prayed for you.*
- 10) *WORRYING does not take away tomorrow's TROUBLES, it takes away today's PEACE. If you really enjoy this, please pass to others. It may brighten someone's day who needs this blessing...*

Would you consider serving???

Do to an unforeseen family emergency, we have an opening on our SWO Board.

This would be a 1 year term.

Please contact by email either

Andrea Campbell, President: at andreacampbell@verizon.net

Or

Karen Ronchetti, Vice President at welca@verizon.net

Pacifica Women of the ELCA
Change of Officers / Contact Form
Year: 20_____

November/December 2011

Page 7

Congregational Units:

Please complete this form as soon as possible after your elections or change of contact women. Please type or print neatly so that the form will copy well. Mail or email to:

SWO Secretary:

Juli Patten
84-740 Kili Dr., #1123
Waianae, HI 96792
alohaboo@hawaii.rr.com

SWO President:

Andrea Campbell
6555 Jaluit
Cypress, CA 90620
andreacampbell@verizon.net

Your Cluster Coordinator

Congregation _____ Pastor _____

Address _____ Cluster _____

Telephone (include area code) _____

Name of your immediate past contact _____

President/Contact Person

Secretary/Second Contact

Name: _____

Name: _____

Address: _____

Address: _____

Telephone: _____

Telephone: _____

E-mail: _____

E-mail: _____

These names will be submitted in a secure and confidential area of our churchwide Women of the ELCA website so that mailings from Chicago come to an interested person. Our synodical secretary will use the information to send out emails regarding synodical events and when the next newsletter is ready on our website (www.pacificawomen.org) and to officially notify each unit of the convention each year. Your cluster coordinator will use it to let you know when there is a planning meeting for a cluster event.

Just a quick reminder from the editor...

We are currently updating our contact information regarding your unit and church. Even if you have “no” changes, would you please drop me a line at: welca@verizon.net, so I can be sure all is correct in our database. I have had many returns both mail and email and just want to make sure everyone is getting all the current information.

Purpose Statement & Keep in our Prayers
Address changes / Corrections

November/December 2011

Page 8

PACIFICA PARTNERS provides news and information to congregational units of the Pacifica Synod. *Pacifica Partners* is published monthly except for July/August and November/December, which are combined issues. Copies are distributed as a courtesy to each congregational unit (CU) in the Pacifica Synod. It is also sent to Women of the ELCA churchwide office, other SWO presidents, Synodical Bishop, current and former board members.

Address changes and corrections should be sent to the Secretary:

Juli Patten

84-740 Kili Dr. #1123

Waianae, HI 96792

Email: alohaboo@hawaii.rr.com

Purpose Statement

Women of the Evangelical Lutheran Church in America

*As a community of women,
created in the image of God,
called to discipleship in Jesus
Christ, and empowered by the
Holy Spirit,
we commit ourselves to grow in
faith, affirm our gifts, support
one another in our callings,
engage in ministry and action,
and promote healing and
wholeness in the church, the
society, and the world.*



International Seafarer's Center & Lutheran Maritime Ministry

This non-profit organization's center serves seafarers from Noon-10 p.m. six days a week and is run by two women and many volunteers. They have four vans that pick the merchant seamen up from the ships and bring them to the center (at no charge to them) and take them shopping at Wal-Mart if they desire. At the center they can enjoy complimentary refreshments and browse through the "back room" where they can take a jacket, pants, shoes and anything else they need, also at no charge.

The seafarers come from all countries around the world; places you have heard of like Russia, Bulgaria, China, and Indonesia and places you haven't heard of like Tuvalu and Kiribati located in the South Seas. These people are away from their families for up to ten months at a time. But to them it is a way to support their family (which may include parents, grandparents as well as their wives and children). Often there is no work available in their homeland and they are forced to work long hard hours on these freighters.

So where does the Lutheran Maritime Ministry come in, you ask? Well at the 2000 Pacifica W.E.L.C.A Convention, Chaplain Virginia Sharma spoke to the women about the International Seafarer's Center and explained that the Lutheran Ministry reaches out to seafarers of all nations and cultures with Christian Witness and Word, meeting personal needs and encouraging spiritual growth. This is where your donations come in. At Christmas time over 2,000 gift bags are assembled and distributed to the seafarers.

The Lutherans are the main providers of the items that make up these "gift bags."

Susan Schneider and I spent an evening last year putting the bags together and had the opportunity to meet some of these amazing people. These are the only gifts they will receive at Christmas. Let me know if you want to help, at the center, this December.

In a small but important way the International Seafarer's Center in conjunction with the Lutheran Maritime Ministry (of which we are all a part) can bring some joy to these deserving men and women.

Thank you for all of your contributions. (See below)

Christina Watson, Bethlehem Lutheran Church, Volunteer, International Seafarer's Center

Seafarer's Christmas "Shoe Box" Gift Recommended gift items in each box

Shampoo (full size) * Toothpaste (full size) * Tooth brush in package * Disposable razors * Pens, any kind

White men's socks (doesn't have to be tube style) * Wrapped hard candy * Top Ramen (flat package)

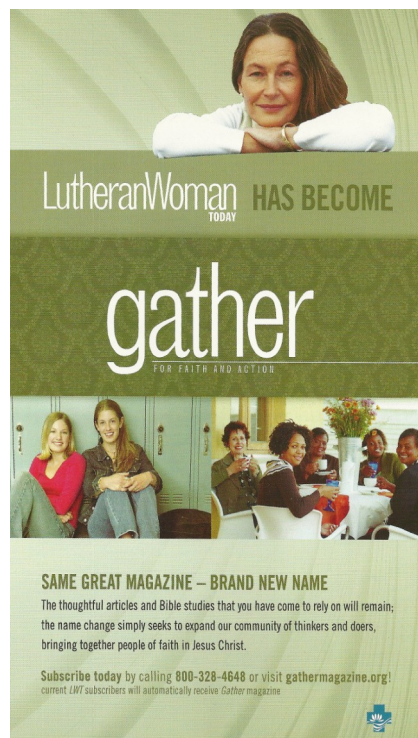
Wrapped chocolate candy, any size * Nail clippers/nail files/emery boards * Chewing gum

If you cannot make up a whole box, any contributions will be appreciated. For pick up or drop off information call Christina Watson at (562) 431-1112 or you can contact the center directly at (562) 432-7560. Address: 120 South Pico Ave., Long Beach, CA 90802-6247.

- January 29, 2012 SWO Board Meeting
Location: Bethlehem Lutheran, Los Alamitos
- March 3, 2012 Synodical Women's One Day Event *"Life's Spiritual Journey"*
Location: Bethlehem Lutheran Church, Los Alamitos
Time: 8-8:45am registration, 9am - 4pm program
(includes continental breakfast & lunch)
- April 2012 Rejoice, Saddleback and Son & Surf Cluster Event
More information to follow
- May 17-19, 2012 Pacifica Synod Assembly
Locations: Irvine Marriott
More information: www.pacificasynod.org
- October 2012 Rejoice, Saddleback and Son & Surf Cluster Event
More information to follow
- November 2-4, 2012 Pacifica Women of the ELCA Convention
More information to follow.



Find us on Facebook 



PACIFICA WOMEN OF THE ELCA

2010-2011 Synodical Board Members

November/December 2011

Page 10

President: Andrea Campbell
6555 Jaluit Street
Cypress, Ca 90630
(714) 891-2556 hm, (714) 296-3342 cell
Email: andreacampbell@verizon.net

Vice President: Karen Ronchetti
8305 Magic Circle
Huntington Beach, CA 92646
(714) 654-8919 cell
Email: welca@verizon.net

Secretary: Juli Patten
84-740 Kili Dr. #1123
Waianae, HI 96792
(808) 590-8262 cell & hm
Email: alohaboo@hawaii.rr.com
Mentor: *Hukilau Cluster*

Treasurer: Inga Sanders
16370 Jupiter Circle
Westminster, Ca 92683
(949) 463-6642 cell & hm
(562) 495-6600, ext 1035 (work)
Email: inga.sanders@gmail.com

Board Members

Verlette Brummell
1651-B Beaver Creek
Beaumont, CA 92223
(951) 922-6206 hm, (562) 400-4636 cell
Email: vrbrummell@aol.com
Mentor: *Big Bear Cluster*

Sue Connors
251 Rancho Drive, Unit D
Chula Vista, Ca 91911
(619) 427-6033 hm, (619) 972-1795 cell
Email: s.connors1@cox.net
Mentor: *Sonshine West Cluster*

Tina Gates
40670 Ventana Court
Palm Desert, Ca 92260
(760) 674-8677 hm, (760) 777-0853 cell
Email: tinagates@dc.rr.com
Mentor: *Mariposa Cluster*

Loretta Gerken
6355 Paseo Corono
Carlsbad, Ca 92009
(760) 476-3634 hm
Email: wm_gerken@prodigy.net
Mentor: *Harvest Cluster*

Violet Quist
13300 Del Monte Drive, #7-M
Seal Beach, CA 90740
(562) 431-8339 hm, (562) 233-9450 cell
Email: vmquist@gmail.com
Mentor: *Rejoice, Son & Surf Cluster*

Paula Rennegarbe
20701 Beach Blvd., #246
Huntington Beach, Ca 92648
(657) 464-9234 hm, (866) 437-4062 cell
Email: paula.oline@live.com
Mentor: *Saddleback Cluster*

Becky Shurson
13848 Meadow View Lane
Yucaipa, CA 92399
(909) 790-4864 hm, (909) 496-2580 cell
Email: bshurson@verizon.net
Mentor: *Raincross Cluster*



Informational Web Sites for “your” use...

November/December 2011

Page 11

www.pacificasynod.org

Pacifica Synod

www.elca.org

This will access the national church wide office

www.womenofheelca.org

(Note: New domain name for churchwide website of the Women of the ELCA; *Café*, for free website for women 20-35 is part of this website).

www.gather.org

This website will access Gather (formerly Lutheran Women Today) magazine directly.

www.lwr.org

Lutheran World Relief

(Ever wanted to know where the quilts go that your units have made or the school and health kits that you assembled and sent to LWR)?

www.thebreastcancersite.com

Click on this site once a day to provide free mammograms for those who otherwise would not be able to have them.

www.cherishchildren.org

Information on Cherish the Children

www.giveaminute.org

Click on this site once a day and the sponsor will contribute funds for a minute of care for the needy Indian children of the Tarahumara Children's Hospital in Creel, Mexico. This site has a mission information link and photo gallery which shows pictures of the area as well as some of the children. This site also links to the Hunger Site where sponsors will give a cup of grain for a click.

Christina Watson

Lutheran Maritime Ministries. Provides “special” Christmas gift to seamen.
(562) 431-1112



The deadline is..

January 6, 2012 for Pacifica Partners

Email: welca@verizon.net

Pacifica Synodical Women's Organization of the
Women of the Evangelical Lutheran Church in America
8305 Magic Circle
Huntington Beach, CA 92646

NON PROFIT ORGANIZATION
U.S. POSTAGE
PAID
HUNTINGTON BCH, CA
PERMIT No. 456

Dated Material-Please Do Not Delay
Return Services Requested



What's Inside

<i>March Event</i>	<i>Page 1</i>
<i>President's Message</i>	<i>Page 2</i>
<i>March 2012 Registration</i>	<i>Page 3</i>
<i>2011 Convention Re-cap</i>	<i>Page 4 - 5</i>
<i>Something to Ponder</i>	<i>Page 6</i>
<i>Officer Change form</i>	<i>Page 7</i>
<i>Purpose Statement & more</i>	<i>Page 8</i>
<i>Calendar of Events</i>	<i>Page 9</i>
<i>Board Information /Mentor List</i>	<i>Page 10</i>
<i>Informational Sites</i>	<i>Page 11</i>