



*JS Graphixx*

**WORKWEAR**

2022

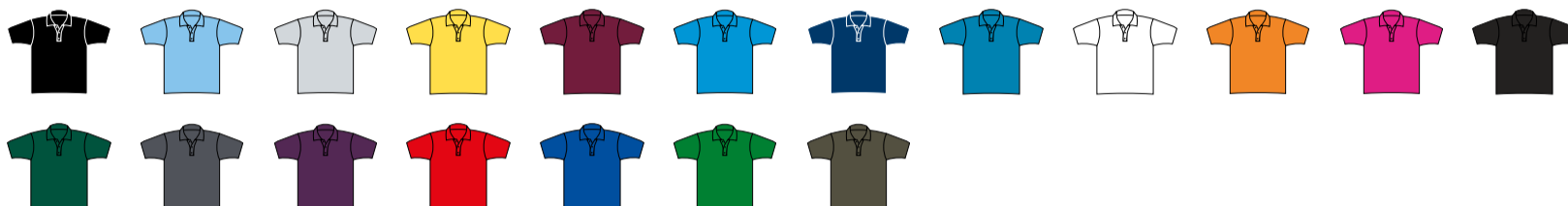




### Pro RTX Pro Piqué Polo Shirt

Code RX101

- Ribbed collar.
- Taped neck.
- Three self colour button placket.
- Twin needle stitching.
- 60°C wash.
- Ladies available [RX101F](#)



### Russell Hardwearing Poly/Cotton Piqué Polo Shirt

Code 599M

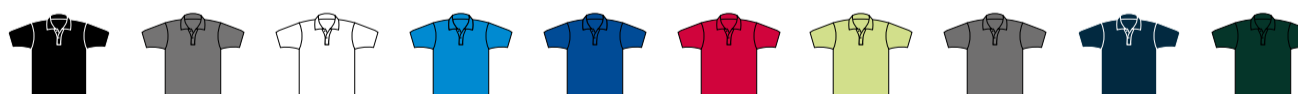
- Twin raised stripe detail on collar and cuffs. Taped neck.
- Two self colour button placket.
- Reinforced shoulder seams.
- Cuffed sleeves. Side vents.
- Twin needle hem.
- Domestic wash 60°C.



### Kustom Kit Regular Fit Workforce Piqué Polo Shirt

Code K422

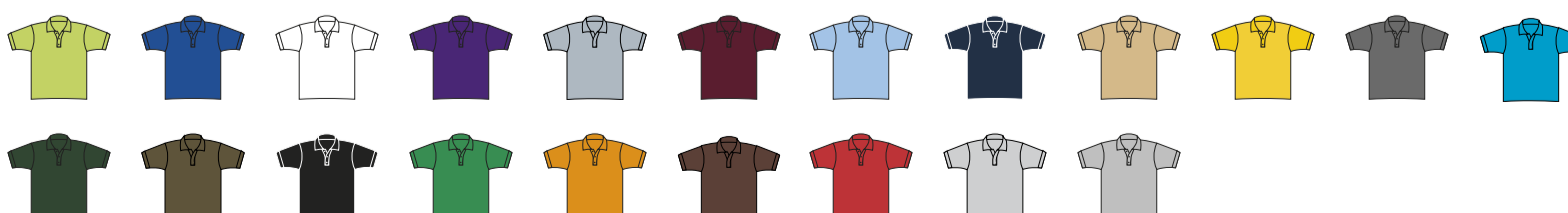
- 1x1 ribbed knit collar.
- Self fabric taped neck.
- Two button placket.
- Twin needle cuffs and hem.
- 60°C wash.
- Ladies available [K722](#)



### SOL'S Prime Poly/Cotton Piqué Polo Shirt

Code 10571

- 1x1 ribbed knit collar and cuffs.
- Taped neck.
- Three self colour button placket.
- Reinforced shoulder seams.
- Twin needle hem. 60°C wash.
- Ladies available [10573](#).

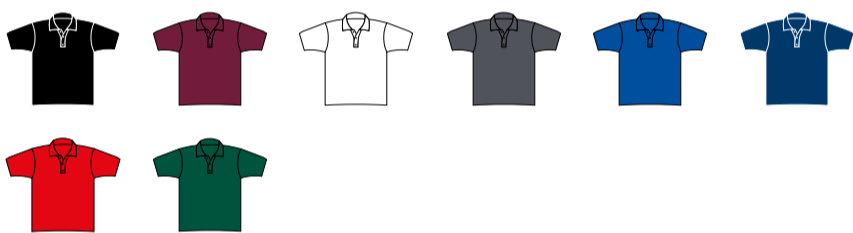




### Pro RTX Pro Polyester Polo Shirt

Code RX105

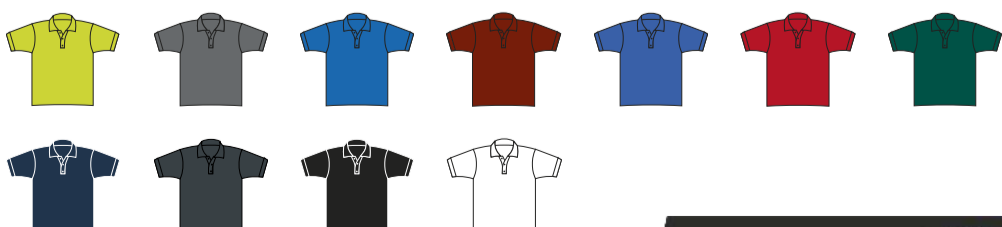
- Spun polyester piqué knit.
- Soft cotton feel fabric.
- Modern fit. Ribbed collar. Taped neck.
- Three self colour button placket.
- Spare button. Twin needle stitching.
- 60°C wash. Ladies available [RX105F](#)



### Premier Coolchecker® Piqué Polo Shirt

Code PR615

- Easy care, moisture wicking fabric.
- Ribbed collar and cuffs.
- Three self colour button placket.
- Panelled detail for more fitted shape.
- Longer length. Side vents.
- Twin needle hem. Ladies available [PR616](#)



**MORE COLOURS AVAILABLE!**



### Pro RTX Pro Long Sleeve Piqué Polo Shirt

Code RX102

- Ribbed collar and cuffs.
- Taped neck.
- Three self colour button placket.
- Twin needle stitching.
- 60°C wash.



**MORE COLOURS AVAILABLE!**

### Henbury Coolplus® Wicking Piqué Polo Shirt

Code H475

- Coolplus® performance permanent wicking fabric draws moisture away from skin to keep you cool and dry.
- Easy care fabric. Flat knit collar.
- Taped neck. Locker patch.
- Two self colour button placket.
- Side vents. Twin needle stitching.
- 60°C wash. Ladies available [H476](#)



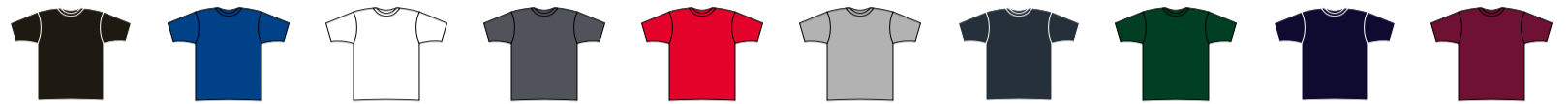




### Pro RTX Pro T-Shirt

Code RX151

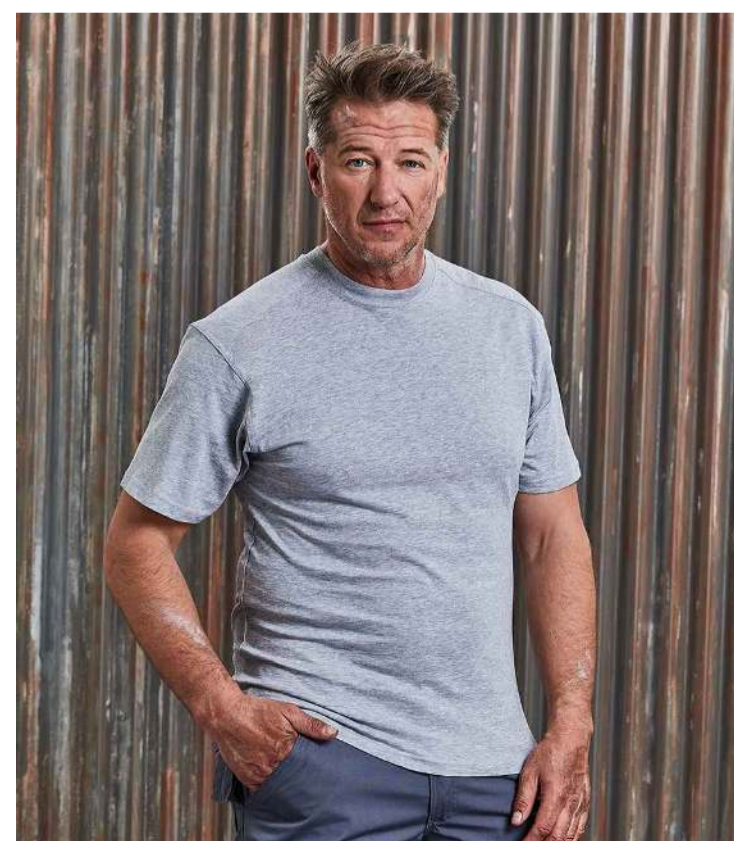
- Ribbed collar.
- Shoulder to shoulder taping.
- Side seams.
- Twin needle stitching.
- 60°C wash.



### SOL'S Imperial Heavy T-Shirt

Code 11500

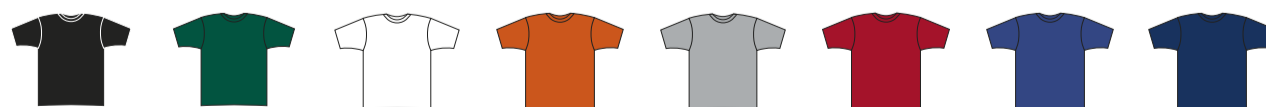
- Ribbed collar.
- Taped neck.
- Tubular body.
- Twin needle stitching.
- Ladies available [11502](#)



### Russell Heavyweight T-Shirt

Code 010M

- Twin needle coverseamed ribbed neck trim.
- Self fabric taped neck.
- Double layer yoke and shoulder panels for durability.
- Twin needle armholes.
- Twin needle sleeves and hem.
- 60°C domestic wash.







## Pro RTX Pro Hoodie

Code RX350

- Modern fit.
- Lined hood.
- Self colour adjustable drawcord.
- Front pouch pocket.
- Ribbed cuffs and hem.
- Twin needle stitching.
- 60°C wash.



## AWDis College Hoodie

Code JH001

- Soft cotton faced fabric.
- Brushed back fleece.
- Drop shoulder style.
- Double fabric hood with self colour drawcord.
- Front pouch pocket.
- Ribbed cuffs and hem.
- Twin needle stitching.
- Ladies available [JH001F](#)

**MORE COLOURS  
AVAILABLE!**



## Portwest DX4™ Zipped Hoodie

Code PW4472

- Moisture wicking fabric keeps the body warm, cool and dry.
- Contrast lining.
- Ergonomically shaped grown on hood with drawcord.
- Raglan sleeves.
- Full length zip with chin guard.
- Two contrast chest zip pockets.
- Two inner pockets.
- Two contrast front zip pockets.
- Open cuffs and hem.
- Branding on zip pulls, left hem and lower right side seam.
- Notepad included.







### Pro RTX Pro Sweatshirt

Code RX301

- Drop shoulder style.
- Modern and comfortable fit.
- Ribbed collar, cuffs and hem.
- Taped neck.
- Twin needle stitching.



### Russell Heavyweight Sweatshirt

Code 013M

- SpotShield™ stain resistant coating.
- Drop shoulder style.
- 1x1 ribbed collar and cuffs with elastane.
- Taped neck. Locker patch.
- Double layer fabric shoulders for durability.
- Elasticated pen holder on sleeve.
- Ribbed bound open hem. Drop hem.
- Suitable for 60°C domestic wash.



### Pro RTX Pro Acrylic Security V Neck Sweater

Code RX220

- 5 gauge.
- Elbow patches 65% polyester/35% cotton.
- Modern unisex styling. Ribbed knit neck.
- Tear release epaulettes on shoulders.
- Left sleeve pen pocket.
- Ideal for security applications.



### Pro RTX Pro Acrylic V Neck Sweater

Code RX200

- 10 gauge.
- Modern unisex styling.
- Set in sleeves.
- Fashioned V neck.
- Saddle shoulders.
- Ribbed knit neck, cuffs and hem.





### Pro RTX Pro Fleece Jacket

Code RX402

- Modern unisex style. Unlined.
- Collar high full length zip.
- Two front zip pockets.
- Elasticated cuffs.
- Adjustable drawcord hem.
- Twin needle stitching.
- 60°C wash.



### Russell Outdoor Fleece Jacket

Code 870M

- Anti-pill, dense, compact pile fleece.
- Unlined.
- Full length zip.
- Two front zip pockets.
- Hemmed cuffs.
- Adjustable drawcord hem.
- Ladies available [870F](#).



### Result Work-Guard Heavy Duty Micro Fleece

Code RS330

- Hang tag.
- Stand up collar.
- Heavy duty full length zip with interchangeable colour zip pulls.
- Two front zip pockets.
- Black elasticated bound cuffs and hem.
- Branding to bottom left hem.



### Regatta Sigma Heavyweight Fleece Jacket

Code RG128

- Unlined.
- Taped neck.
- Locker patch.
- Raglan sleeves. Full length zip.
- Two front zip pockets. Fleece cuffs.
- Open hem with adjustable drawcord.
- Interactive style.







### Pro RTX Pro Bodywarmer

Code RX551

- Polyester 190T taffeta padding.
- Showerproof. Fleece lined stand up collar.
- Back neck hanging loop.
- Full length zip with chin guard and inner zip guard. Two inner chest pockets.
- Two front zip pockets. Drop back hem.



### Pro RTX Two Layer Soft Shell Gilet

Code RX550

- 97% polyester/3% elastane outer.
- Showerproof and windproof.
- Relaxed fit.
- Full length zip with chin guard and inner zip guard. Two front zip pockets.
- Adjustable drawcord hem.



### Russell Gilet

Code 014M

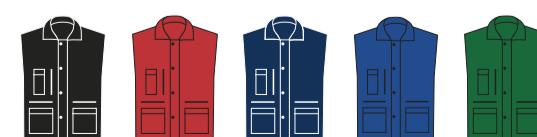
- Stain resistant DuPont™ Teflon® coating.
- Polyester padding. Polyester lining.
- Full length zip with storm flap.
- Elasticated gusset at armholes for comfort. Left chest large zip pocket.
- Right chest pocket with multiple compartments. Two front zip pockets.
- Large internal A4 document pocket.
- Curved back hem.
- Suitable for 60°C domestic wash.



### Result Work-Guard Lance Bodywarmer

Code RS127

- Polyester padding and lining.
- Showerproof and windproof.
- Full length zip with studded storm flap.
- Deep elasticated armholes.
- Two triple access front pockets, chest pocket, media and inner pockets.
- Small elastication at hips.
- Curved back hem.







## Pro RTX Pro Two Layer Soft Shell Jacket

Code RX500

- Showerproof and windproof.
- Full length zip with chin guard and inner zip guard.
- Two front zip pockets.
- Adjustable cuffs and hem.



## Russell Soft Shell Workwear Jacket

Code 018M

- Textured polyester micro fleece backed.
- Waterproof 5000mm and breathable 5000g membrane.
- Durable showerproof DuPont™ Teflon® coating.
- Full length YKK zip.
- Contrast panels on shoulders, elbows and back of hem.
- Multiple pockets.
- Adjustable drawcord hem.



## Regatta Sandstorm Soft Shell Workwear Jacket

Code RG158

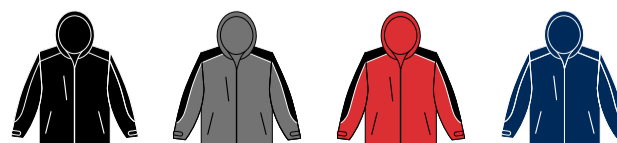
- Polyester fleece backed.
- Hardwearing with ATL durable water repellent finish.
- Durazone polyamide overlays at wear points for added strength and durability.
- Full length zip. Right chest zip pocket.
- Two front zip pockets. Adjustable cuffs and hem.



## Result Work-Guard Hooded Soft Shell Jacket

Code RS118

- Waterproof 8000mm, breathable 1000g and windproof TPU membrane.
- Polyester micro fleece inner layer.
- Contrast ripstop shoulders and arm scuff panels.
- Concealed hood.
- Full length zip.
- Zip underarm vents.
- Multiple pockets.
- Adjustable cuffs and hem.







## Regatta Dover Waterproof Insulated Jacket

Code RG045

- 220 series anti-pill Symmetry® fleece lining. Polyamide sleeve lining. Thermo-Guard® insulation.
- Waterproof and windproof.
- Concealed adjustable lined hood.
- Full length zip with tear release storm flap.
- Multiple pockets.
- Part elasticated cuffs and hem.
- Ladies available [RG074](#).



## Result Work-Guard Sabre Pilot Jacket

Code RS300

- 190T polyester taffeta diamond quilted lining.
- Polyester padding.
- Waterproof and windproof.
- Full length zip.
- Micro fleece lined stand up collar.
- Multiple pockets.
- D-ring.
- Elasticated ribbed cuffs and hem.
- Includes four coloured zip pulls.



## Portwest DX4™ Baffle Jacket

Code PW4471

- Insulatex lining.
- Full length zip with chin guard.
- Reflective piping on back yoke.
- Two contrast chest zip pockets.
- Two inner pockets.
- Two contrast front zip pockets.
- Bound cuffs.
- Drawcord hem.
- Branding on zip pulls, left hem and lower right side seam.
- Notepad included.







## Regatta Hudson Waterproof Insulated Jacket

Code RG042

- 210 series anti-pill Symmetry® fleece lining to collar and body.
- Polyester lined sleeves.
- Thermo-Guard® insulation.
- Waterproof with taped seams. Windproof.
- Concealed adjustable hood. Collar high full length zip with inner zip guard.
- Two front zip pockets.
- Inner pocket and media pocket.
- Stud side adjusters. Adjustable cuffs.
- [Ladies available RG043.](#)



## Result Work-Guard Sabre Long Coat

Code RS301

- Polyester padding. 190T polyester taffeta diamond quilted lining.
- Waterproof and windproof.
- Concealed adjustable hood.
- Micro fleece lined stand up collar.
- Full length zip with tear release storm flap.
- Left chest pocket. Multi-feature right chest pocket. Left sleeve pocket. Inner pocket. Deep front patch pockets with tear release closure and reflective trim.
- D-ring.
- Elasticated adjustable cuffs.
- Includes four coloured zip pulls.



## Result Work-Guard Elevator Jacket

Code RS314

- Polyester padding and lining.
- Knitted polyester back and sleeves.
- Brushed inner.
- Super stretch fabric and seams allow for natural movement.
- Stand up collar.
- Full length YKK zip with chin guard.
- Interchangeable colour zip pulls.
- Two front zip pockets.
- Inside zip pocket.
- Bound cuffs and hem.



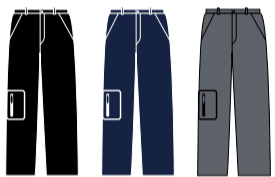




## Russell Work Trousers

Code 001M

- Extendable waistband with belt loops.
- Zip fly with stud button over.
- Two side pockets.
- Rear pockets with flaps.
- Media pocket.
- Cargo pocket on right leg.



## Result Work-Guard Action Trousers

Code RS308

- Windproof and breathable.
- Expandable waistband with belt loops.
- Zip fly with button over.
- Handwarmer side pockets.
- Rear pockets.
- Cargo pockets on both legs.
- Media pocket. Hammer loop.
- Knee pad pockets.
- Critical stress point bar tacking.
- Twin needle stitched seams.
- 2" hem.
- Ladies available [RS308F](#).



## Warrior Cargo Trousers

Code HL210

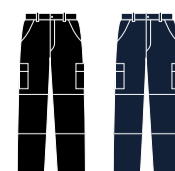
- Traditional waistband - extendable at hip points.
- Belt loops.
- Zip fly with button over.
- Two side pockets.
- Rear concealed button pockets.
- Two side leg tear release cargo pockets.
- Ladies available [HL215](#).



## Pro RTX Pro Workwear Cargo Trousers

Code RX600

- Traditional waistband with belt loops.
- Concealed zip fly with button over.
- Two side swing pockets.
- Rear open pocket.
- Two closed cargo pockets on both legs.
- Knee pad pockets with tear release closure.



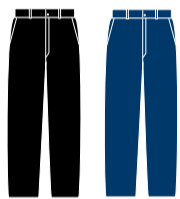




## Pro RTX Pro Workwear Trousers

Code RX601

- Traditional waistband with belt loops.
- Concealed zip fly with button over.
- Two side swing pockets.
- Rear open pocket.



## Portwest Action Trousers

Code PW101

- UPF rating of 50+.
- Belt loops.
- Zip fly with hook and bar over.
- Reinforced seat and knees.
- Two side zip pockets and two rear zip pockets.
- Two side patch pockets and two zip pockets with slanted entry.
- Right leg pocket with tear release closure.
- Knee pad pockets.
- Ladies available [PW707](#).



## Regatta Pro Cargo Holster Trousers

NEW

Code RG720

- Part elasticated waistband with belt loops. Zip fly with button over. Two fold away multi-use holster pockets. Two side pockets. Two rear pockets with button down flaps.
- Left leg ruler pocket. Right thigh pocket.
- Hammer loop. D-ring attachment.
- Knee pad pockets, available separately RG282.



## Portwest Combat Trousers

Code PW125

- UPF rating of 50+.
- Belt loops.
- Zip fly with concealed button over.
- Two side slant entry pockets.
- Rear patch pockets.
- Two side leg pockets.







## Russell Workwear Poly/Cotton Shorts

Code 002M

- Extendable waistband with belt loops.
- Zip fly with stud button over.
- Two side pockets.
- Rear pockets with flaps.
- Cargo pocket on right leg.
- Media pocket.



## Result Work-Guard Action Shorts

Code RS309

- Windproof.
- Expandable waistband with belt loops.
- Zip fly with button over.
- Handwarmer side pockets.
- Rear pockets. Cargo pockets on both legs.
- Hammer loop.
- Critical stress point bar tacking.
- Twin needle stitched seams.



## Regatta Action Shorts

Code RG234

- Water repellent finish.
- Part elasticated waistband with belt loops.
- Zip fly with button over.
- Two large side pockets with hem bellows.
- Rear pockets - right with zip.



## Pro RTX Pro Cargo Shorts

Code RX605

- Traditional waistband with belt loops.
- Zip fly with button over.
- Two side pockets.
- Rear patch pocket.
- Two side leg cargo pockets with flaps.



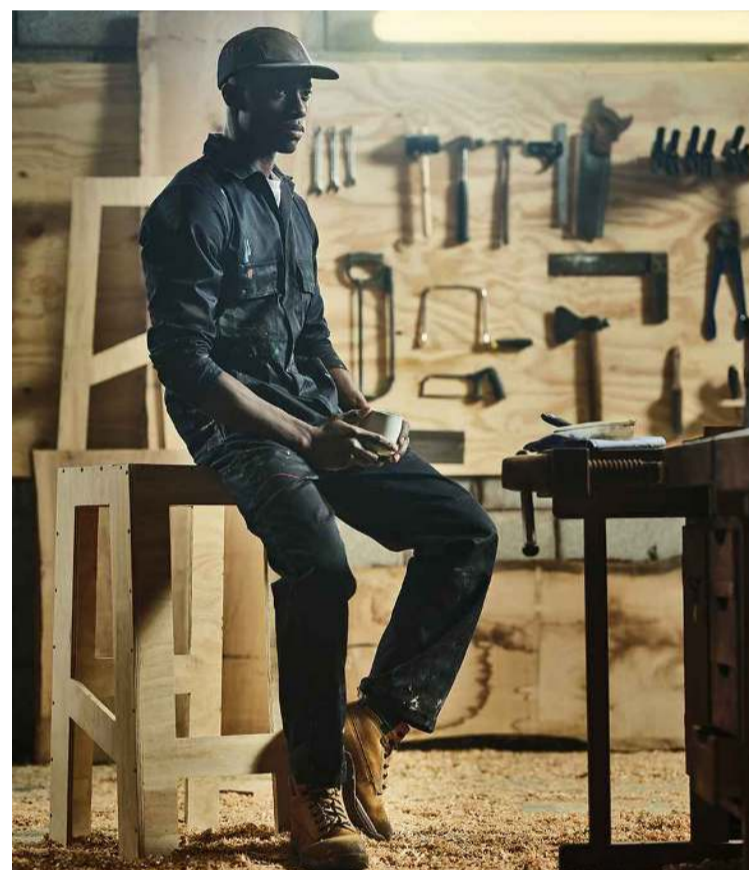




## Warrior Stud Front Coverall

Code DV002

- Concealed stud front.
- Two mitred chest pockets with stud flap closure.
- Two swing pockets with side access.
- Full back elasticsation and an action back.
- Rear mitred patch pocket.
- Right leg ruler pocket.



## Regatta Pro Zip Front Coverall

NEW

Code RG724

- Concealed front zip.
- Two chest zip pockets.
- Left sleeve pocket.
- Side elasticated waistband.
- Two side pocket openings.
- Two rear pockets, one patch, one zipped.
- Tear release adjustable cuffs.
- Reinforced crotch seam.
- Left leg ruler pocket.
- Knee pad pockets, available separately RG282.



## Portwest Bizweld™ Flame Resistant Coverall

Code PW452

- Conforms to EN ISO 11612 A1 + A2, B1, C1, E2, F1.
- EN ISO 11611 class 1, A1 + A2.
- ASTM F1959/F1959M-12 APTV=11.2 CAL/CM2.
- Flame resistant finish.
- UPF 50+.
- Concealed stud front.
- Two chest pockets with stud flap closure.
- Radio loop.
- Stud adjustable cuffs.
- Ruler pocket.
- Branding on left sleeve.





## Portwest Classic Rain Jacket

Code PW166

- Waterproof 5000mm with taped seams.
- Fold away hood with drawcord.
- Full length zip with inner zip guard.
- Underarm eyelets.
- Two front pockets.
- Inner elasticated storm cuffs.
- Drawcord hem.
- Branded woven tab on right side seam.
- Co-ordinates with Trousers [PW167](#)



## Regatta Pro Packaway Waterproof Breathable Jacket

Code RG213

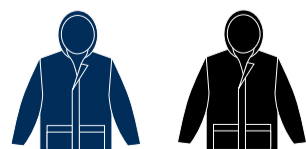
- Waterproof with taped seams.
- Windproof and breathable.
- Integral adjustable hood.
- Full length low profile zip with chin guard and inner storm flap.
- Two front zip pockets.
- Elasticated cuffs.
- Adjustable drawcord hem.
- Packs away into stuff sack.
- Co-ordinates with Trousers [RG214](#)



## Result Core Waterproof Over Jacket

Code RS227

- Waterproof 2000mm with taped seams.
- Windproof.
- Concealed hood.
- Full length zip with studded storm flap.
- Mesh ventilation panel on back.
- Inner elasticated cuffs.
- Adjustable drawcord hem.
- Co-ordinates with Trousers [RS226](#)







## Warrior Chukka Boots

Code WR100

- Steel toe cap (200 Joules).
- PU sole.
- Oil resistant sole.
- Steel midsole.
- Anti-static.
- Energy absorbent heels.
- D-ring fastening.
- Branded tab.



## Result Work-Guard Stirling Safety Boots

NEW

Code RS459

- Mesh lined. Water resistant.
- EN ISO 20345: 2011 S3 SRC.
- Lightweight. Composite toe cap.
- Composite midsole for underfoot protection.
- SRC slip resistance. Oil resistance.
- Energy absorption heel. Anti-static.
- Padded ankle support. Heel loop.



## Portwest Steelite™ Lusum S1P HRO Safety Trainers

NEW

Code PW809

- EN ISO 20345: 2011 SRA S1P HRO.
- Steel toe cap (200 Joules). Steel midsole. Dual density sole unit.
- EVA/rubber outsole. SRA slip resistant.
- Fuel, oil and heat resistant outsole.
- Energy absorbing seat region. Anti-static.



## Portwest Endurance Safety Hard Hat

Code PW039

- Conforms to EN397 LD, 440v.
- EN50365 class: 0.
- Constructed using high-density polypropylene.
- Suspension harness with foam sweatband, rain gutter and ear protector slots.
- Adjustable 55-62cm.



Knee Pads, Gloves & more also available





## Pro RTX High Visibility Polo Shirt

Code RX710

- Conforms to EN ISO 20471: 2013 + A1: 2016 class 2. RIS-3279-TOM (orange/navy only).
- Lightweight breathable birdseye fabric.
- Contrast ribbed collar.
- Contrast three button placket.
- Two reflective bands on front, back and one over each shoulder.
- Side vents. Twin needle stitching.



## Pro RTX High Visibility Two Tone Sweatshirt

Code RX730

- Conforms to EN ISO 20471: 2013 + A1: 2016 class 3. RIS-3279-TOM (orange/navy only).
- Brushed back fleece.
- Drop shoulder style.
- Contrast ribbed collar, cuffs and hem.
- Two reflective bands around the body, sleeves and one over each shoulder.



## Yoko Hi-Vis Short Sleeve T-Shirt

Code YK010

- Soft feel polyester.
- Conforms to EN ISO 20471: 2013 + A1: 2016 class 2. RIS-3279-TOM (orange only).
- Soft ribbed collar and cuffs.
- Two reflective bands around the body and one over each shoulder.
- Twin needle stitching.



## Yoko Hi-Vis Pull Over Hoodie

Code YK031

- Anti-pill single jersey knitted soft feel fabric.
- Conforms to EN ISO 20471: 2013 + A1: 2016 class 3. RIS-3279-TOM (orange and orange/navy only). Black and navy provide enhanced visibility.
- Drop shoulder style. Two panel hood with grey contrast drawcord. Taped neck.
- Two reflective bands around the body, sleeves and one over each shoulder.
- Front pouch pocket. Ribbed cuffs and hem.







## Pro RTX High Visibility Cargo Trousers

Code RX760

- Yellow/navy and orange/navy conform to EN ISO 20471: 2013 + A1: 2016 class 1. RIS-3279-TOM (orange/navy only). Navy provides enhanced visibility.
- Water repellent finish.
- Part elasticated waistband with belt loops.
- Zip fly with button over.
- Two side pockets. Rear tear release pocket.
- Two side leg cargo pockets with reflective tape.
- Inner knee pad pockets.
- Two reflective bands around lower legs.



## Yoko Hi-Vis Two Band and Braces Waistcoat

Code YK102

- Tear release front closure. Bound edges - solid colours have self colour, two tone have contrast.
- Two reflective bands around the body and one over each shoulder.
- Solid yellow, solid orange, yellow/orange conform to EN ISO 20471: 2013 + A1: 2016 class 2. Black, navy, paramedic green and yellow/royal blue conform to EN ISO 20471: 2013 + A1: 2016 class 1. All other colours provide enhanced visibility in all kinds of environments.



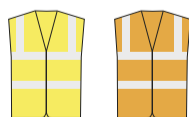
**MORE COLOURS  
AVAILABLE!**



## Warrior Hi-Vis Waistcoat

Code WR001

- Conforms to EN ISO 20471: 2013 + A1: 2016 class 2.
- Black polyester bound edges.
- Tear release front closure.
- Two reflective bands around the body and one over each shoulder.







## Yoko Hi-Vis Classic Bomber Jacket

Code YK200

- Nylon diamond quilted lining with polyester padding.
- Yellow and orange conform to EN ISO 20471: 2013 + A1: 2016 class 3 and EN343. RIS-3279-TOM (orange only).
- Waterproof with taped seams. Windproof.
- Concealed hood. Full length heavy duty zip with studded storm flap.
- Two reflective bands around the body, sleeves and one over each shoulder.
- Right chest media pocket. Inner patch pocket.
- Two front pockets with flaps.
- Elasticated cuffs. Part elasticated hem.



## Portwest Hi-Vis Bomber Jacket

Code PW001

- Quilted nylon lining and polyester padding.
- Conforms to EN ISO 20471: 2013 + A1: 2016 class 3, EN343: class 3:1. EN342 0.336m<sup>2</sup> K/W, 2, X.
- Waterproof with taped seams.
- Stain resistant finish.
- Concealed adjustable hood. Fleece lined collar.
- Full length two way zip with studded storm flap.
- Two reflective bands around the body, sleeves and one over each shoulder.
- Two front pockets. Zip security pocket and inner pocket.
- Inner ribbed storm cuffs. Part elasticated hem.



## Pro RTX High Visibility Bomber Jacket

NEW

Code RX770

- Polyester padding and diamond quilted taffeta lining.
- Conforms to EN ISO 20471: 2013 + A1: 2016 class 3.
- RIS-3279-TOM (orange only).
- Waterproof with taped seams.
- Concealed adjustable hood.
- Full length zip with studded storm flap.
- Two reflective bands around the body, sleeves and one over each shoulder.
- Two front pockets.
- Inner pocket.
- Elasticated cuffs and hem.

