

Solar-Cam NW™

Solar Powered 4G ANPR Network Camera

March 2019

The Solar-Cam ANPR is an ultra-low light 2 MPixel 4G solar powered **Automatic Number Plate Recognition (ANPR)** Camera for remote or unattended locations. The camera recognises registration plates to 98% accuracy and when a match occurs to a registration number on the 'Blacklist', an image of the vehicle and an image of the registration plate are immediately sent via a 4G modem to the WTW Dashboard for viewing. The compact autonomous camera is solar powered making it completely independent of external power. The *Solar-Smart* super charging system ensures that the battery has always enough charge and will control the camera, modem and solar charging to ensure the battery never goes flat. The images are sent via a 3G/4G modem to a PC, mobile phone, or web based monitoring 'Dashboard'. The camera has a rugged **IP67** housing for all outdoor weather conditions.

FEATURES

- Fully integrated autonomous solar powered 3G/4G ANPR camera system
- Complete 'wire free' solution for traffic monitoring
- Camera records video 24/7 and maintains ~ 4 weeks of video history which can be viewed remotely
- Ultra-Low Light (0.002Lux) 2 MPixel camera with 140dB wide dynamic range for unlit roadways
- Electronic Image Stabilisation (EIS)
- Vehicle and Rego Images are sent immediately to a Web based Dashboard and Monitoring Station
- Full control and configuration of the camera via web interface
- 'Live View' video can be viewed on mobile phone, tablet, and PC
- Li-Ion Battery pack with Solar-Smart® super-charging technology
- 4 X Optical Zoom (2.8 – 12mm) or (8 – 32mm)
- Rugged weatherproof IP67 housing with 100W Solar Panel - all with adjustable mounts.

CAMERA



SOLAR-CAM ANPR SYSTEM



CL 96 BD



377 XPY



Plate No. : 503VEC



Plate No. : 336VKS

CAMERAS

MBS-NW-(ANPR)

SPECIFICATIONS

Camera

| | |
|-----------------------|---|
| Maximum Resolution | 1920 x 1080 (2 MPixel) @ 60fps |
| Wide Dynamic Range | 140dB |
| Lens | Zoom: 2.8 to 12 mm, 8 to 32mm (4 X Optical) |
| Video Compression | H.265+, H.264+,/MJPEG |
| Max Frame Rate | 50 fps (1920 x1080), (1280 x 960) |
| Accuracy | Capture rate>99%, Recognition rate > 98% |
| Direction | Supports vehicles leaving and approaching |
| Lanes | Up to 2 lanes |
| Blacklist & Whitelist | up to 10,000 |
| Vehicle Speed | < 120km/h |
| Protocols | TCP/IP,ICMP, HTTP, HTTPS, FTP,DHCP,DNS,DDNS,RTP,RTSP,RTCP,NTP UPnP,SMTP,SNMP,IGMP,802.1X,QoS,IPv4/IPv6 |
| Storage | Internal SD card - 256GB |

General

| | |
|-----------------------|--|
| Operating Temperature | -30°C to +60°C (-22°F to +140°F), Humidity 95% or less |
| Solar Panel | 100W @ 18.3VDC |
| Ingress Protection | IP 67 |
| Dimensions | 29 x 25 x 21 cm (11.4 x 9.8 x 8.3 inches) |
| Weight | 6Kg |

Modem

| | |
|------------------|---|
| Frequency Bands: | LTE FDD: Band1 (2100 MHz)/ Band3(1800 MHz)/ Band7(2600 MHz)/ Band8 (900 MHz)/ Band20 (800 MHz) DC-HSPA+/HSPA+/HSPA/UMTS: Band1 (2100 MHz)/ Band8 (900 MHz) EDGE/GPRS/GSM: 850 MHz/ 900 MHz/ 1800 MHz/ 1900 MHz |
|------------------|---|

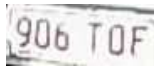


Plate No. :906TOF



Plate No. :590SMU



Plate No. :T53047



Plate No. :770TEG

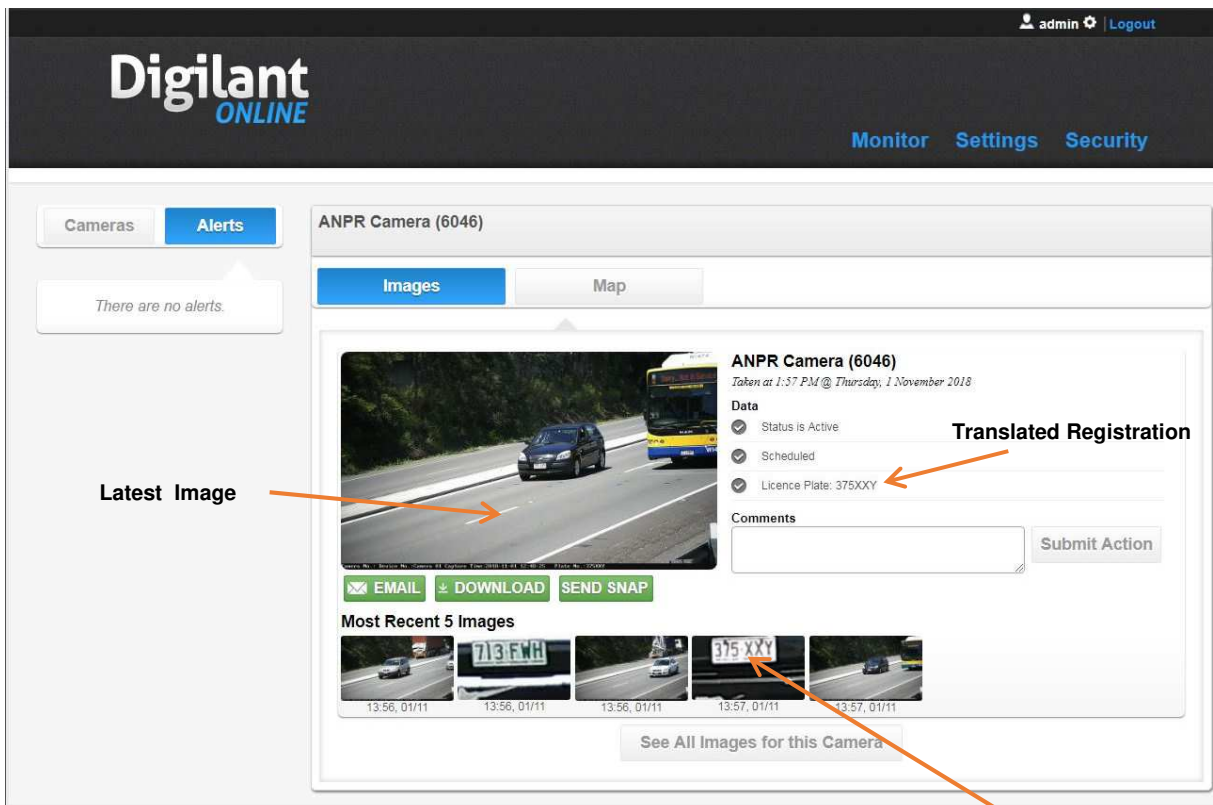
WIRELESS TO WEB™ DASHBOARD

The 'Wireless To Web' (WTW) is a fast, secure and reliable Global network sending images from Diligent wireless cameras to end user's PCs, mobile phones, monitoring stations, or the Dashboard.

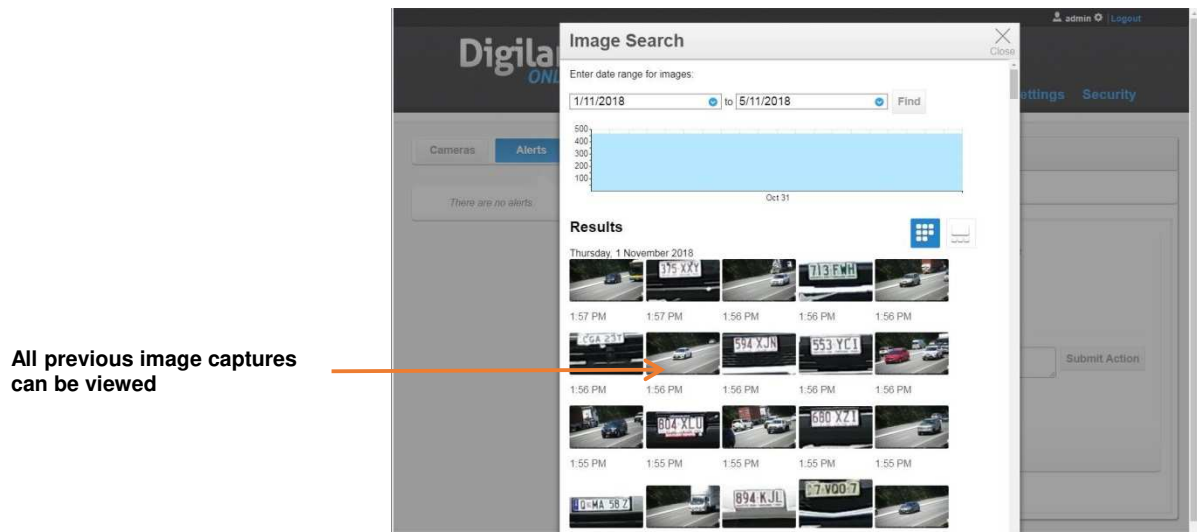
The WTW Dashboard enables images to be displayed from multiple cameras all on the one screen.

In Map View, each camera is displayed as an icon and can be highlighted using the mouse and when selected, opens an image viewer to display historical images in rapid succession.

Each time a registration plate is matched with the blacklist, the image of the vehicle, registration plate, and translated registration is displayed on the Dashboard and can also be sent as an alert to monitoring stations or mobile phones



Actual Registration Image



All previous image captures can be viewed