

**Solar-Cam NW™**

**Solar Powered 4G ANPR Network Camera**

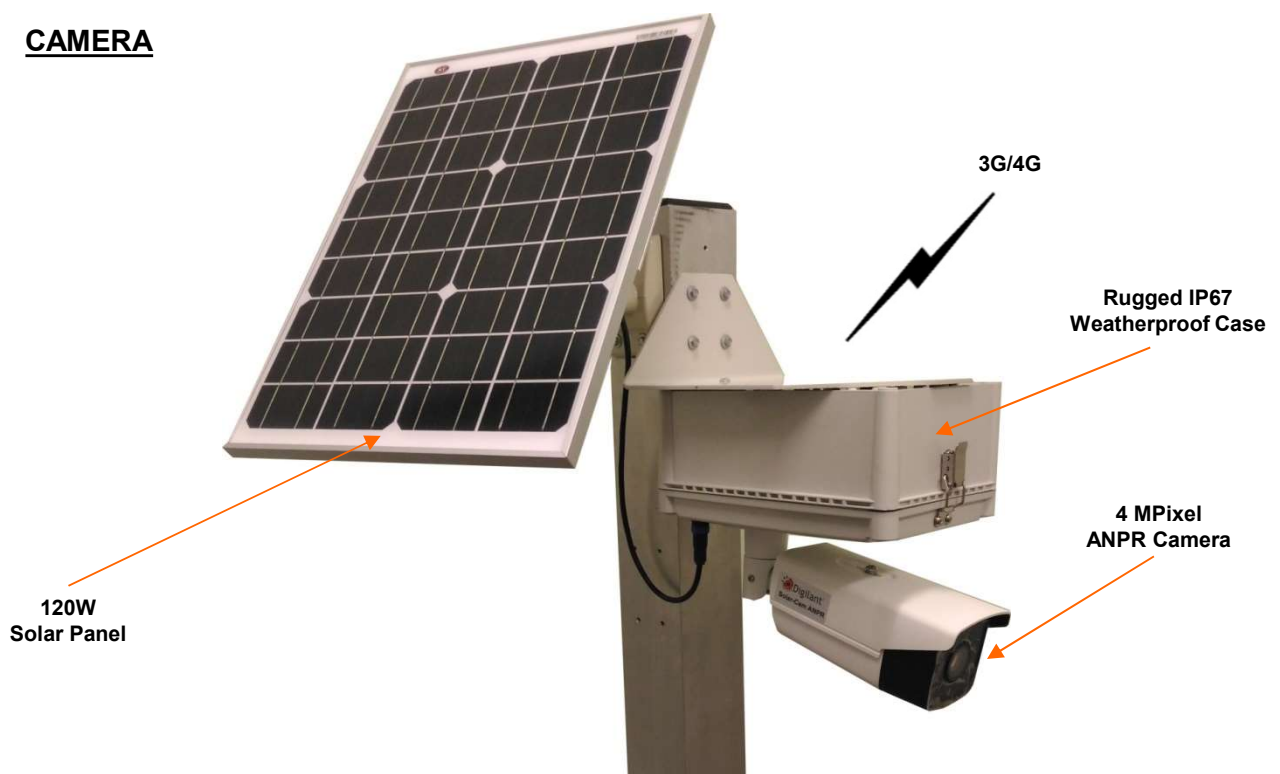
**August 2021**

The Solar-Cam ANPR is an ultra-low light 4 MPixel 4G solar powered **Automatic Number Plate Recognition (ANPR)** Camera for remote or unattended locations. The camera recognises registration plates to 98% accuracy and when a match occurs to a registration number on the 'Blacklist', an image of the vehicle and an image of the registration plate are immediately sent via a 4G modem to the WTW Dashboard for viewing. The compact autonomous camera is solar powered making it completely independent of external power. The *Solar-Smart* super charging system ensures that the battery has always enough charge and will control the camera, modem and solar charging to ensure the battery never goes flat. The images are sent via a 3G/4G modem to a PC, mobile phone, or web based monitoring 'Dashboard'. The camera has a rugged **IP67** housing for all outdoor weather conditions.

**FEATURES**

- Fully integrated autonomous solar powered 3G/4G ANPR camera system
- Complete 'wire free' solution for traffic monitoring
- Camera records video 24/7 and maintains ~ 1 week of video history which can be viewed remotely
- Ultra-Low Light (0.0005Lux) 4 MPixel camera with 140dB wide dynamic range for unlit roadways
- Full vehicle detection including licence plate, vehicle type, colour, make, etc.
- Vehicle and Rego Images are sent immediately to a Web based Dashboard and Monitoring Station
- Full control and configuration of the camera via web interface
- 'Live View' video can be viewed on mobile phone, tablet, and PC
- Li-Ion Battery pack with Solar-Smart® super-charging technology
- 4 X Optical Zoom (2.8 – 12mm) or (8 – 32mm)
- Rugged weatherproof IP67 housing with 120W Solar Panel - all with adjustable mounts.

**CAMERA**



**SOLAR-CAM ANPR SYSTEM**



377-XPY



CL-96-BD



Plate No. :336UKS



Temporary setup on existing TMR Pole for Trial

**CAMERAS**  
**MBS-NW4-(ANPR)**

**SPECIFICATIONS**

**Camera**

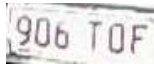
Maximum Resolution 2688 x 1520 (4 MPixel) @ 25fps  
 Wide Dynamic Range 140dB  
 Lens Zoom: 8 to 32mm (4 X Optical)  
 Video Compression H.265+/H.265/ H.264+/H.264  
 Accuracy Capture rate>99%, Recognition rate > 98%  
 Direction Supports vehicles leaving and approaching  
 Lanes Up to 2 lanes  
 Blacklist & Whitelist up to 10,000 entries  
 Vehicle Speed < 120km/h  
 Protocols TCP/IP,ICMP, HTTP, HTTPS, FTP,DHCP,DNS,DDNS,RTP,RTSP,RTCP,NTP  
 UPnP,SMTP,SNMP,IGMP,802.1X,QoS,IPv4/IPv6  
 Storage Internal SD card - 256GB Max Endurance

**General**

Operating Temperature -30°C to +60°C (-22°F to +140°F), Humidity 95% or less  
 Solar Panel 120W @ 18.3VDC  
 Ingress Protection IP 67  
 Dimensions 29 x 25 x 21 cm (11.4 x 9.8 x 8.3 inches)  
 Weight 5.6Kg

**Modem**

Frequency Bands: **LTE FDD:** B1/B3/B4/B5/B7/B8/B28 **LTE-TDD:** B40  
**WCDMA:** B1/B2/B5/B8  
**GSM/EDGE:** B2/B3/B5/B8



**Plate No. :906TOF**



**Plate No. :590SMU**



**Plate No. :T53047**



**Plate No. :770TEG**

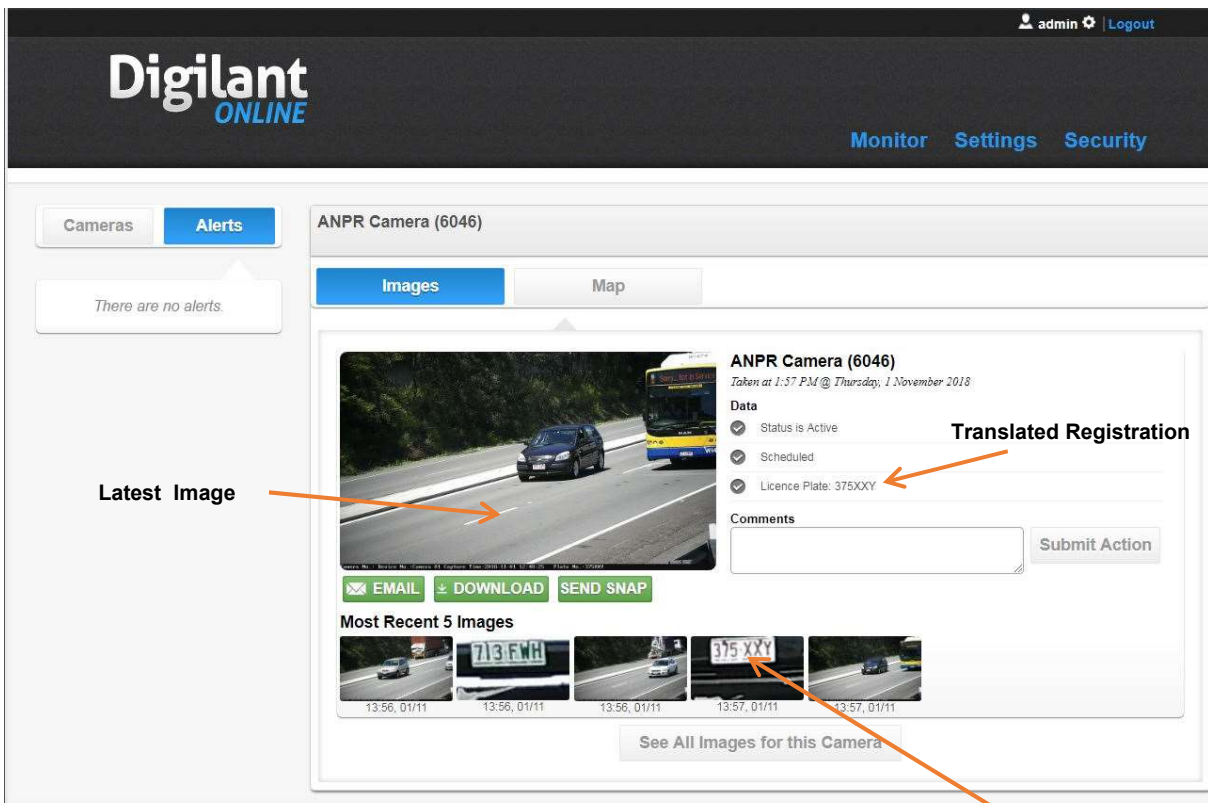
### WIRELESS TO WEB™ DASHBOARD

The 'Wireless To Web' (WTW) is a fast, secure and reliable Global network sending images from Diligent wireless cameras to end user's PCs, mobile phones, monitoring stations, or the Dashboard.

The WTW Dashboard enables images to be displayed from multiple cameras all on the one screen.

In Map View, each camera is displayed as an icon and can be highlighted using the mouse and when selected, opens an image viewer to display historical images in rapid succession.

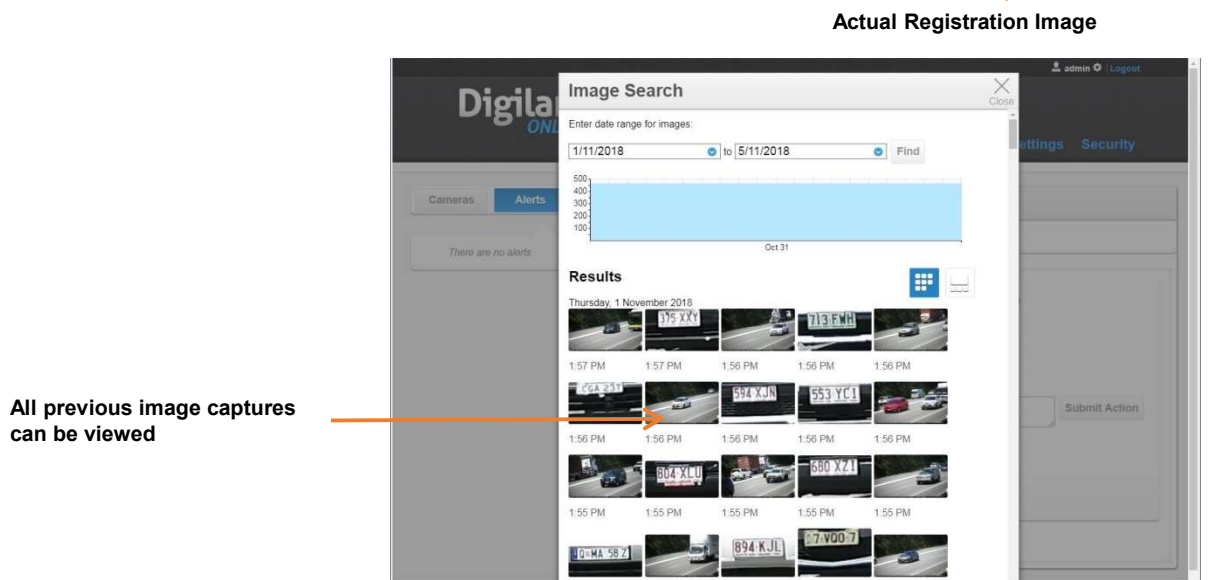
Each time a registration plate is matched with the blacklist, the image of the vehicle, registration plate, and translated registration is displayed on the Dashboard and can also be sent as an alert to monitoring stations or mobile phones



**Latest Image** →

**Translated Registration** →

**Actual Registration Image** →



**All previous image captures can be viewed** →