



Quick Installation Guide

1-Port Wired Print Server

Model No.: XM-PS110P
XM-PS110U

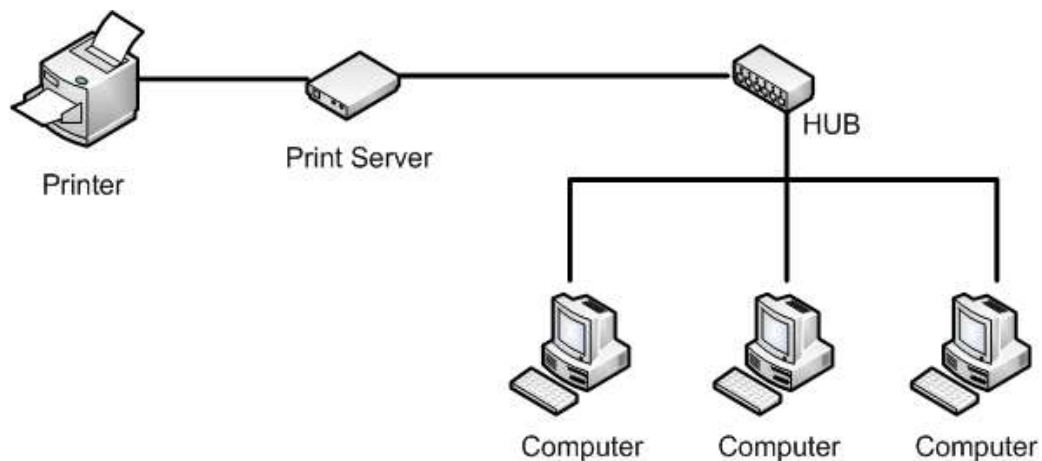
For the most up-to-date information, please visit www.x-mediausa.com

Version 1.0

Before you start, you should prepare the following items:

- One Windows-based PC with print server setup CD
- One printer
- One printer cable
- One HUB

Wired Network with Print Server:

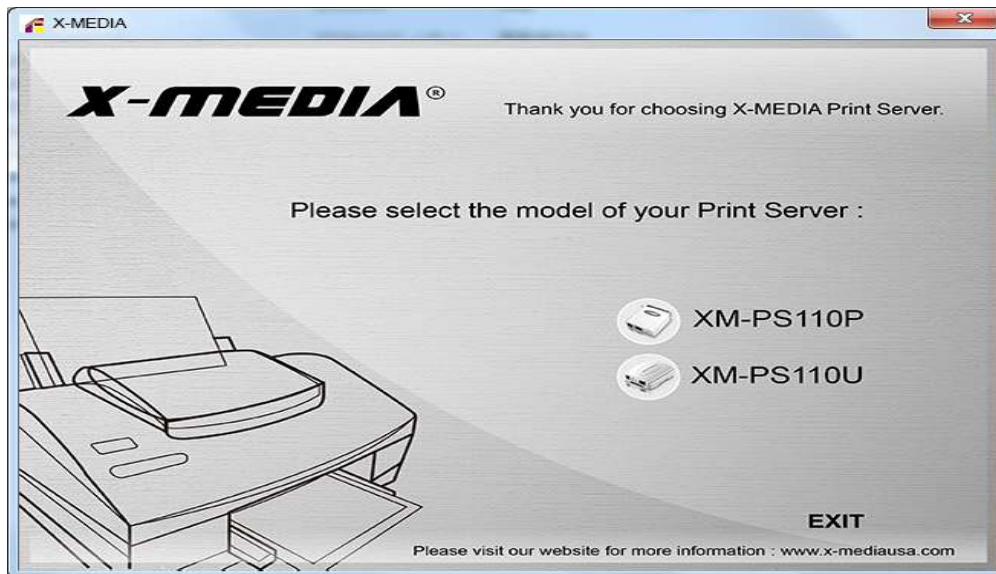


Hardware Installation:

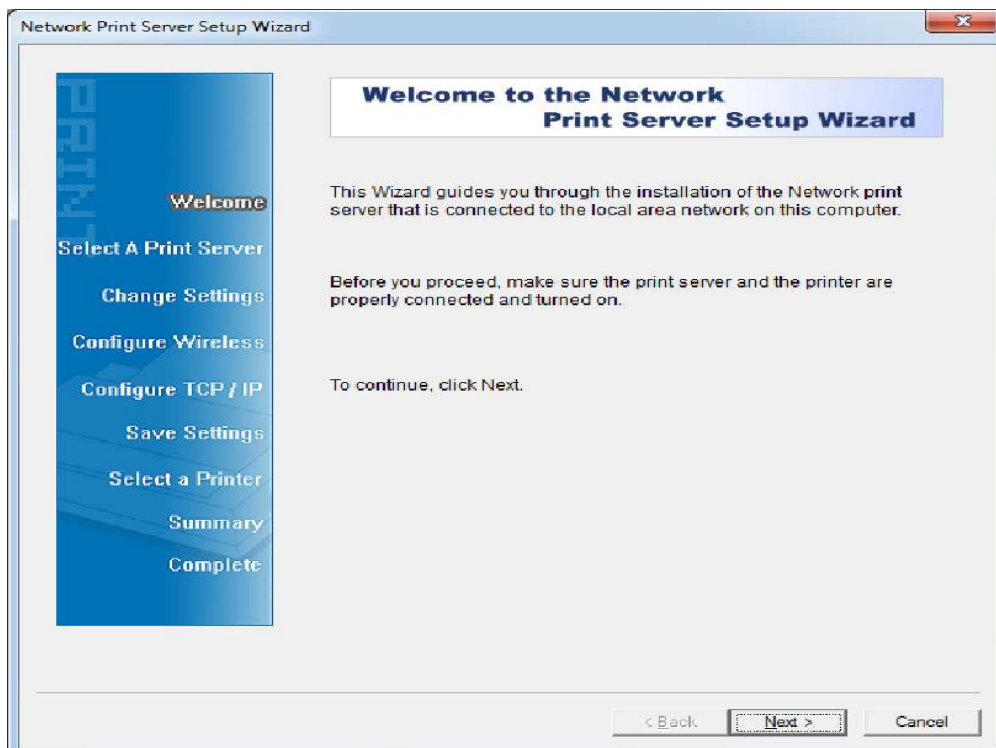
1. Turn off the printer's power.
2. Connect the print server to your printer with the supplied printer cable.
3. Turn the printer's power on.
4. Plug the AC power adapter into the power connector on the print server.
5. Wait 10 seconds as part of the print server's Power On Self Test (POST).

Software Installation:

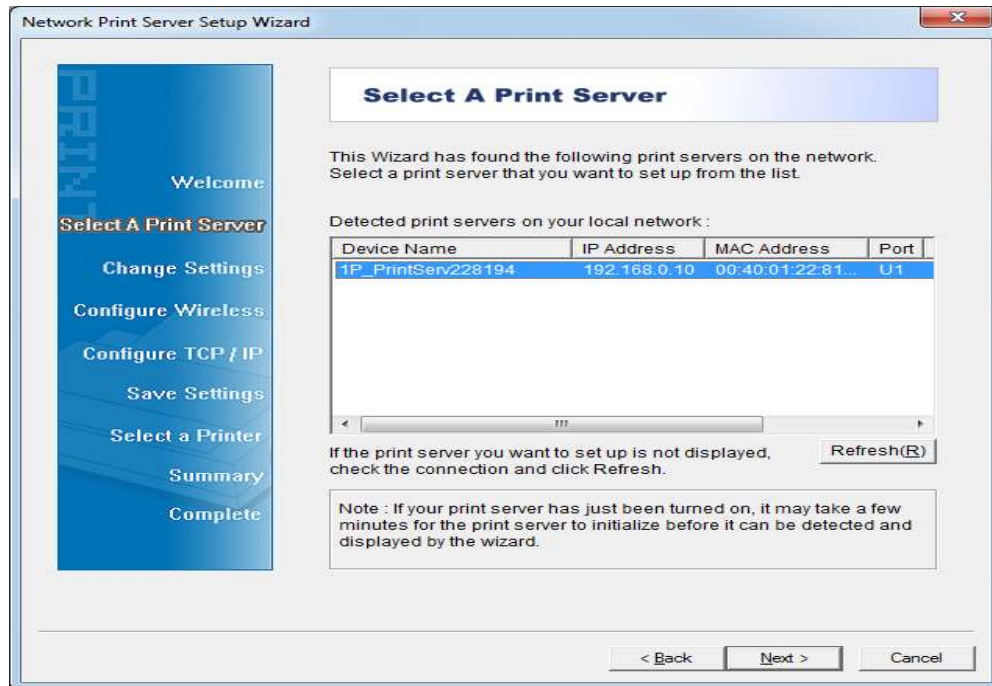
1. To enable network communication with print server, your computer must have a proper IP address, e.g. 192.168.0.100
2. Insert the setup CD into your CD-drive, and the following message appears.



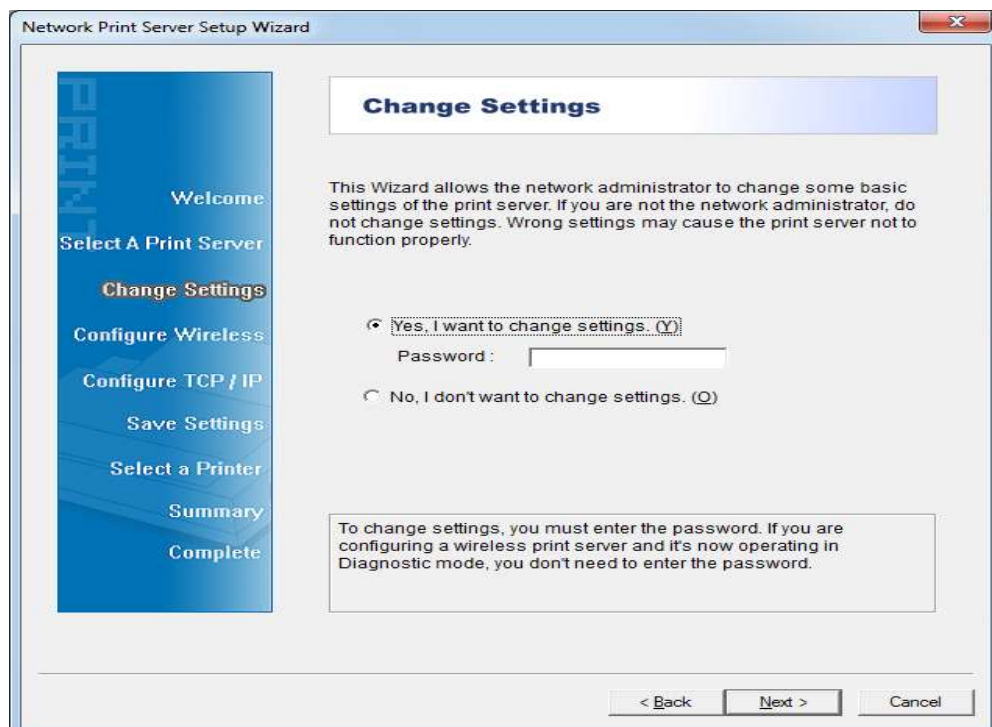
3. Choose **Setup Wizard** to install the print server and configure the connected printer.



4. Click **Next**, the wizard will automatically discover the print server.
5. From the **Select A Print Server** screen, select the print server that you want to configure and click **Next**.



6. On the **Change Settings** screen, select **No** or **Yes**:



Click **No** if you want the print server to keep using the default IP address and keep the default settings, and then click **Next**.

- IP address: 192.168.0.10
- Subnet Mask: 255.255.255.0

Click **Yes** if you want to change IP address to the print server, and then click **Next**.

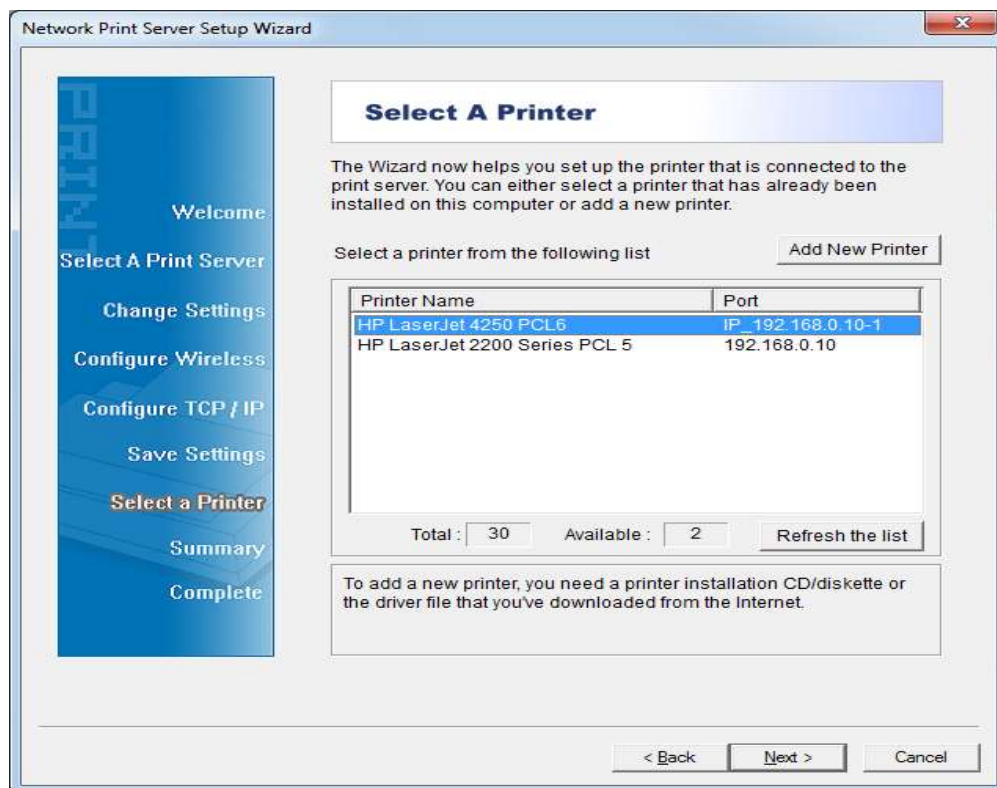
Note:

1. The IP address of print server must be within the same subnet as your network adapter.
2. After you save the new IP address, the print server will automatic reboot once to make ready for the new IP address. It may take a couple of seconds.

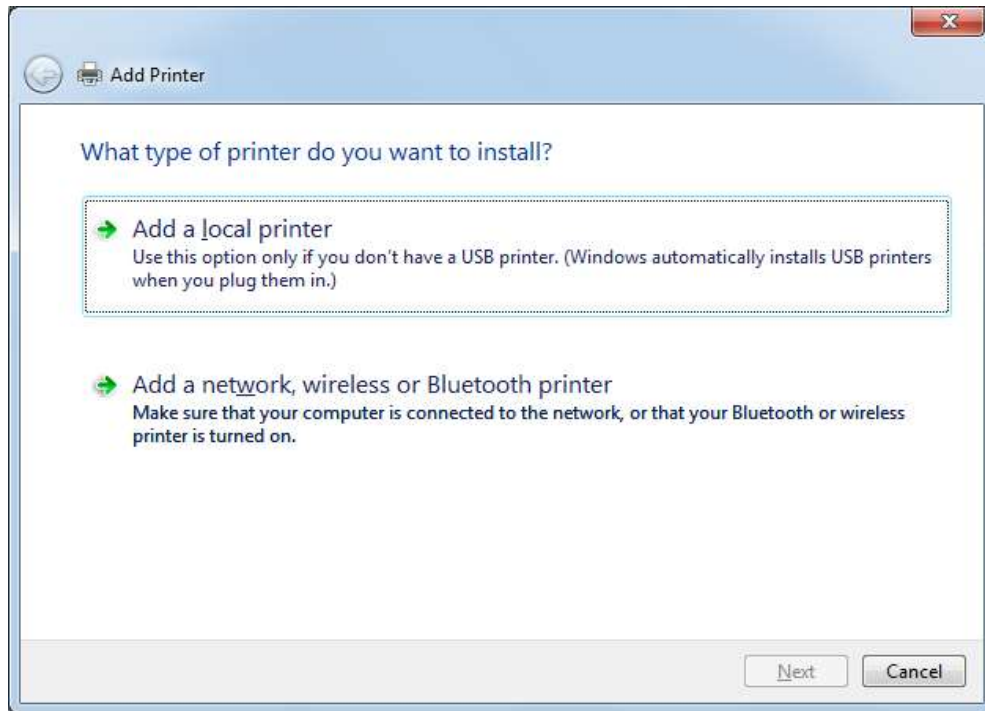
7. On the **Select A Printer** screen, select an already configured printer from the list, click **Next** and then **Finish** to complete the installation.

or

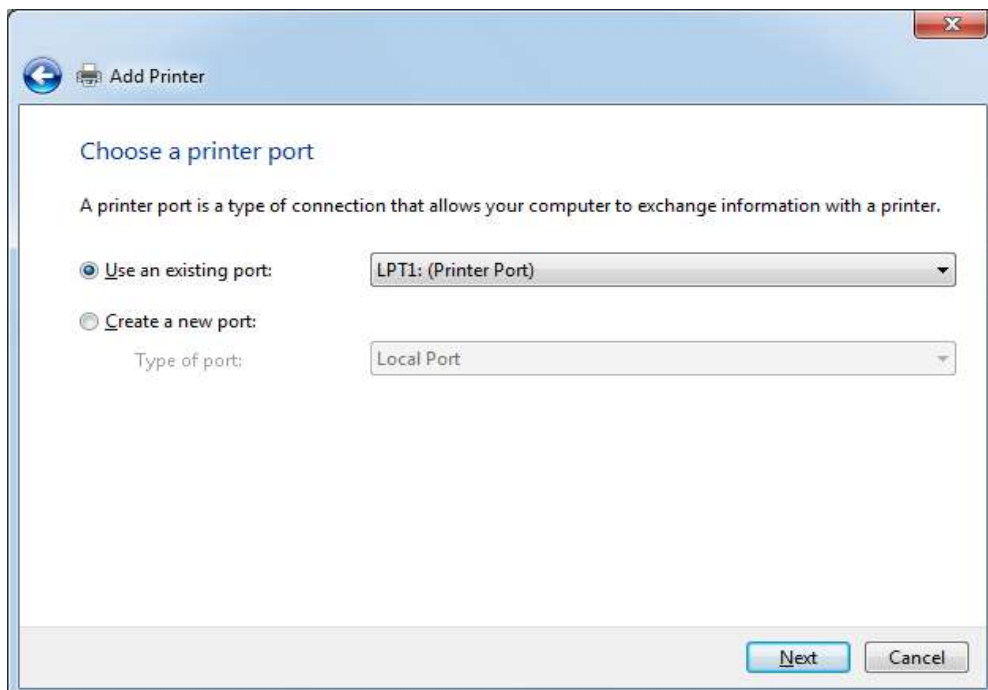
Select **Add New Printer** if the print server is connected to a printer that hasn't been installed before and does not appear in the list.



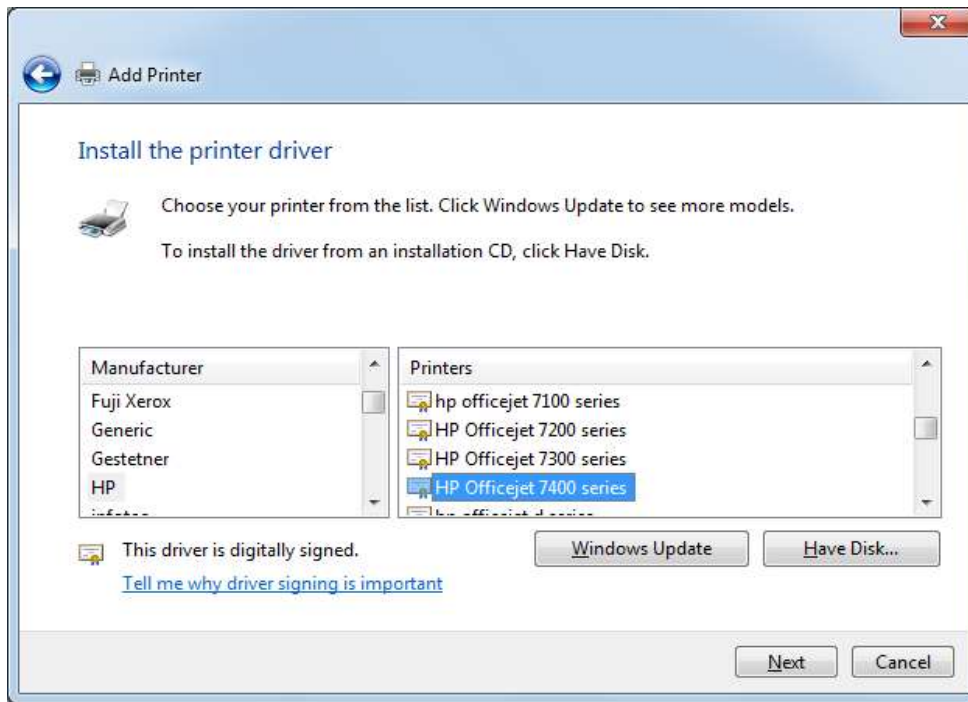
8. Click **Add New Printer** to launch **Windows Add Printer Wizard**.
Select **Add a local printer**.



9. Make sure the **Use an existing port** radio-button is clicked and select **LPT1: (Recommended Printer Port)** from the pull-down list. Then click **Next**.

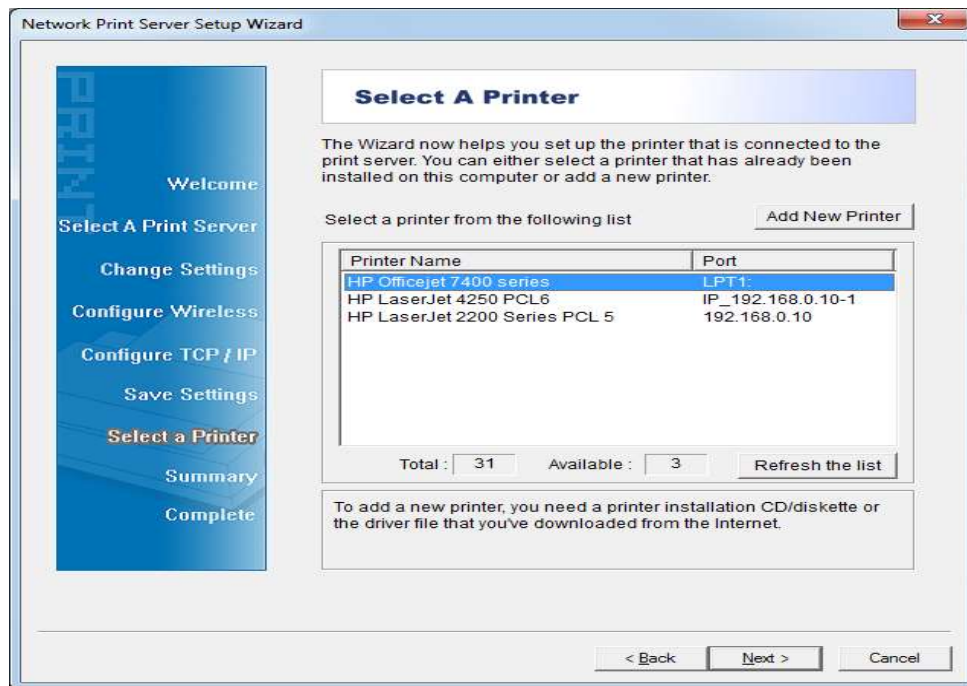


10. Select **Manufacturer** and **Printer** from the lists of printer's driver. Then click **Next**.

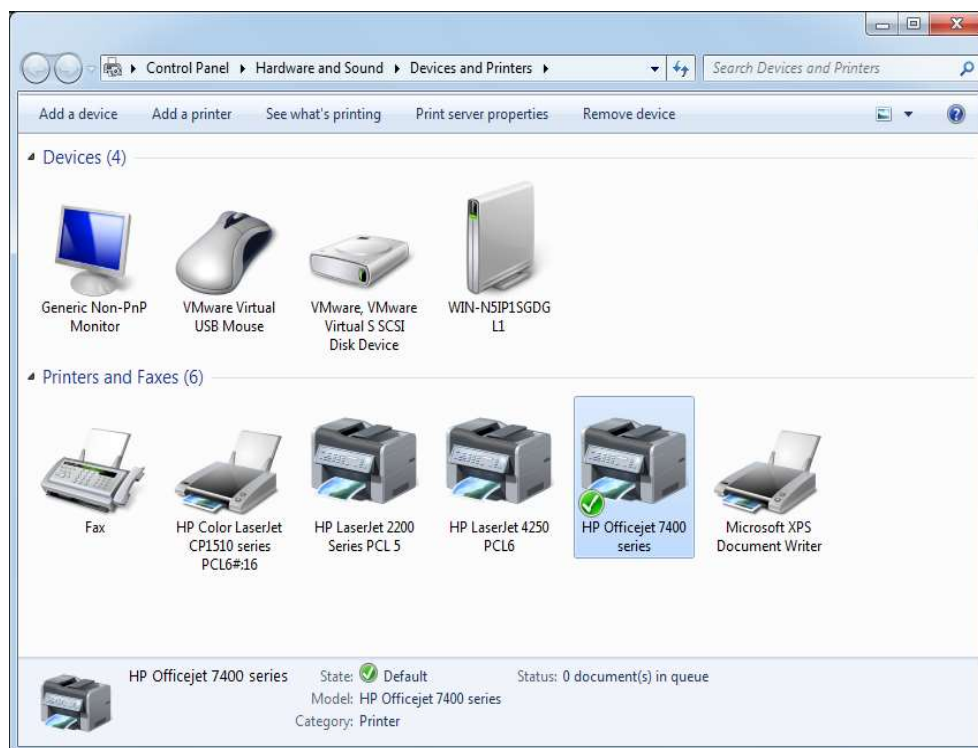


11. If you already have the printer's driver installed, you will be asked whether to keep it or to replace it. Click **Next**. Supply a name for the printer and choose whether you want to make it your default printer. Then click **Next**.
12. Then, choose whether you want to share the printer with other network users, print a test page (please select **No.**), etc. Select the appropriate radio-button and click **Next** and **Finish**.

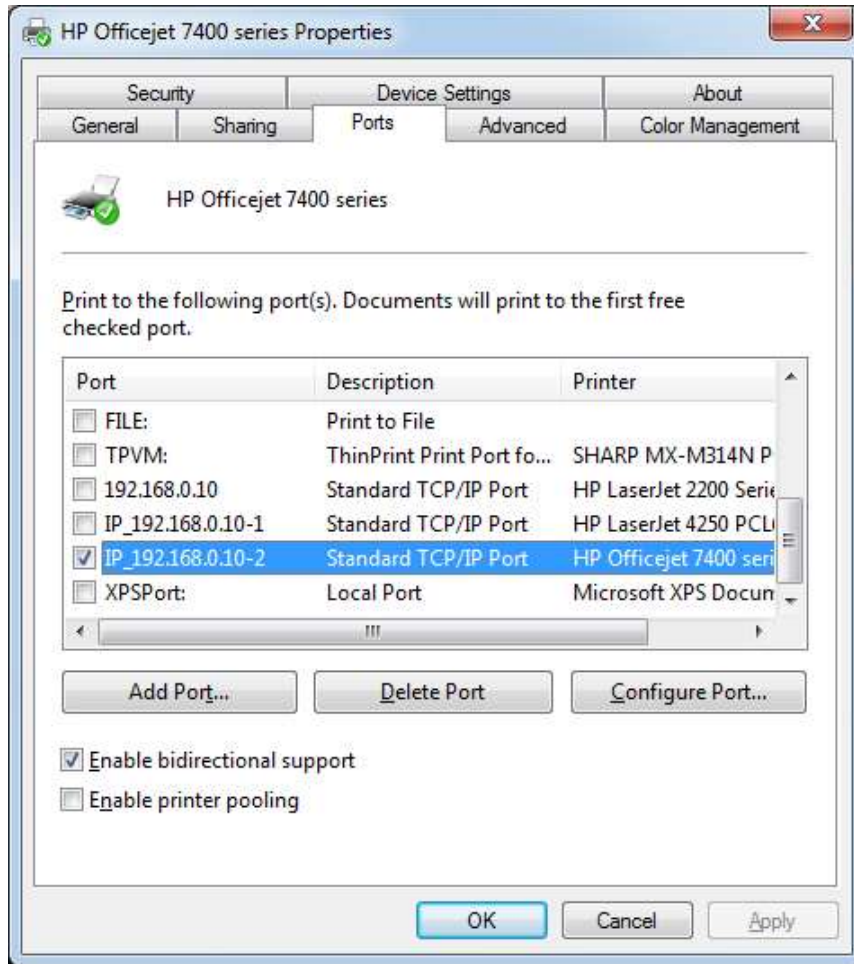
13. In the setup wizard, finish the installation by highlighting the installed printer in the **Select a Printer** list and click **Next -> Finish**.



14. From Windows system, go to **start -> Devices and Printers** and highlight your newly installed printer.



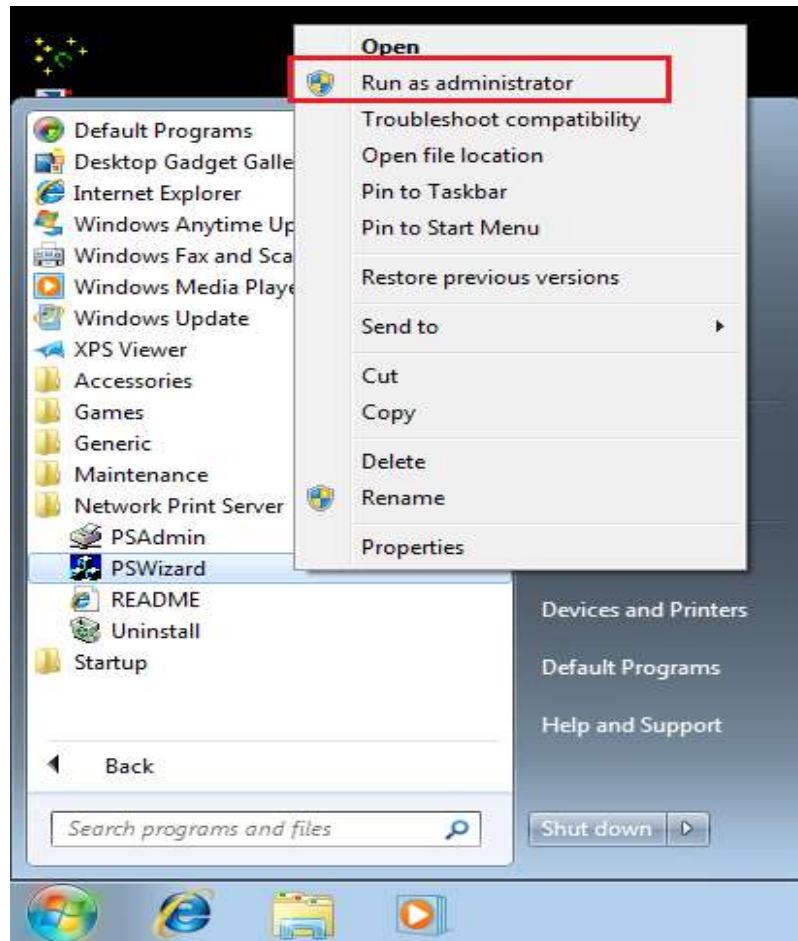
15. Right-click, select **Printer Properties -> Ports** and verify that the print server's port appears.



16. Go to **General**; click **Print Test Page** to verify the configuration.
17. Done.

Note:

If you wish to install more print servers, start setup wizard from your Windows Start menu: **start** -> **All Programs** -> **Network Print Server** -> **PSWizard** (Windows Vista or higher, press mouse right key select **Run as administrator**) and repeat the installation procedure.

**TRADEMARKS**

MS-DOS, Microsoft, Windows 95/98/98SE/NT/2000/ME/XP/7/8/8.1/10 are trademarks of Microsoft Corporation
Apple, Macintosh and Mac are trademarks of Apple, Inc.

*All other third-party brands and names are the property of their respective owners

All contents are subject to change without prior notice.

