

# Gatorback Professional Tool Belts

THE MOST INNOVATIVE AND COMFORTABLE TOOL BELT ON THE MARKET!  
COME FEEL THE DIFFERENCE!

## FOUNDATION SETTERS COMBO

Part# B340

### FEATURES

- EVERY STRESS POINT IS REINFORCED WITH BAR-TACK STITCHING AND HEAVY DUTY METAL RIVETS
- 1250 DENIER DURATEK FABRIC WITH HIGH DENSITY NYLON WEBBING AROUND EACH POUCH
- PRO COMFORT BACK SUPPORT PADDED BELT
- CARRYING HANDLES FOR OFF THE WAIST HANDLING
- BOX DESIGN POUCHES WITH SEWN IN PLASTIC INSERTS

### INCLUDED ON EVERY BELT

- CONTRACTORS 6 POCKET POUCH W/HAMMER LOOP
- CONCRETE FOUNDATION TIE POUCH
- MOLDED AIR-CHANNEL BACK SUPPORT BELT
- HAMMER HOLSTER
- TAPE HOLDER

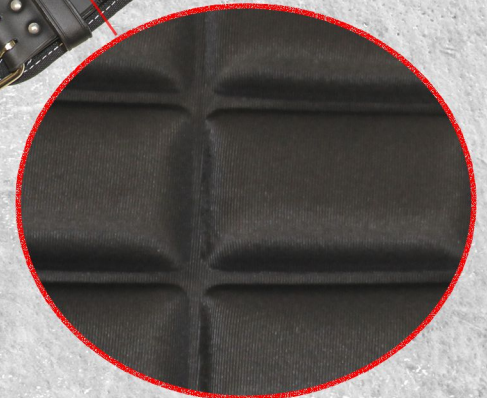


- Small- 26"-30"
- Medium- 31"-34"
- Large- 35"-39"
- XL- 40"-44"
- 2XL- 45"-49"
- 3XL- 50"-55"

## MOLDED AIR-CHANNEL BACK SUPPORT BELT

Part# B400

- The first Molded Air-Channel Tool Belt that provides unbeatable comfort, support and ventilation for your back
- All the stress points are reinforced with bar-tack stitching and heavy duty metal rivets
- Double metal buckle on a genuine leather-tipped belt for strength and durability
- High-density Web Core sewn inside the padded belt provides additional strength
- Made from 1250 denier DuraTek fabric
- Available in sizes from 26" to 55"



## MOLDED AIR-CHANNEL SUSPENDERS

Part# B606

The Molded Air-Channel Suspenders provide unmatched comfort. Easy to attach spring clips, adjustable straps and shoulder pads, make the perfect addition to your tool rig.

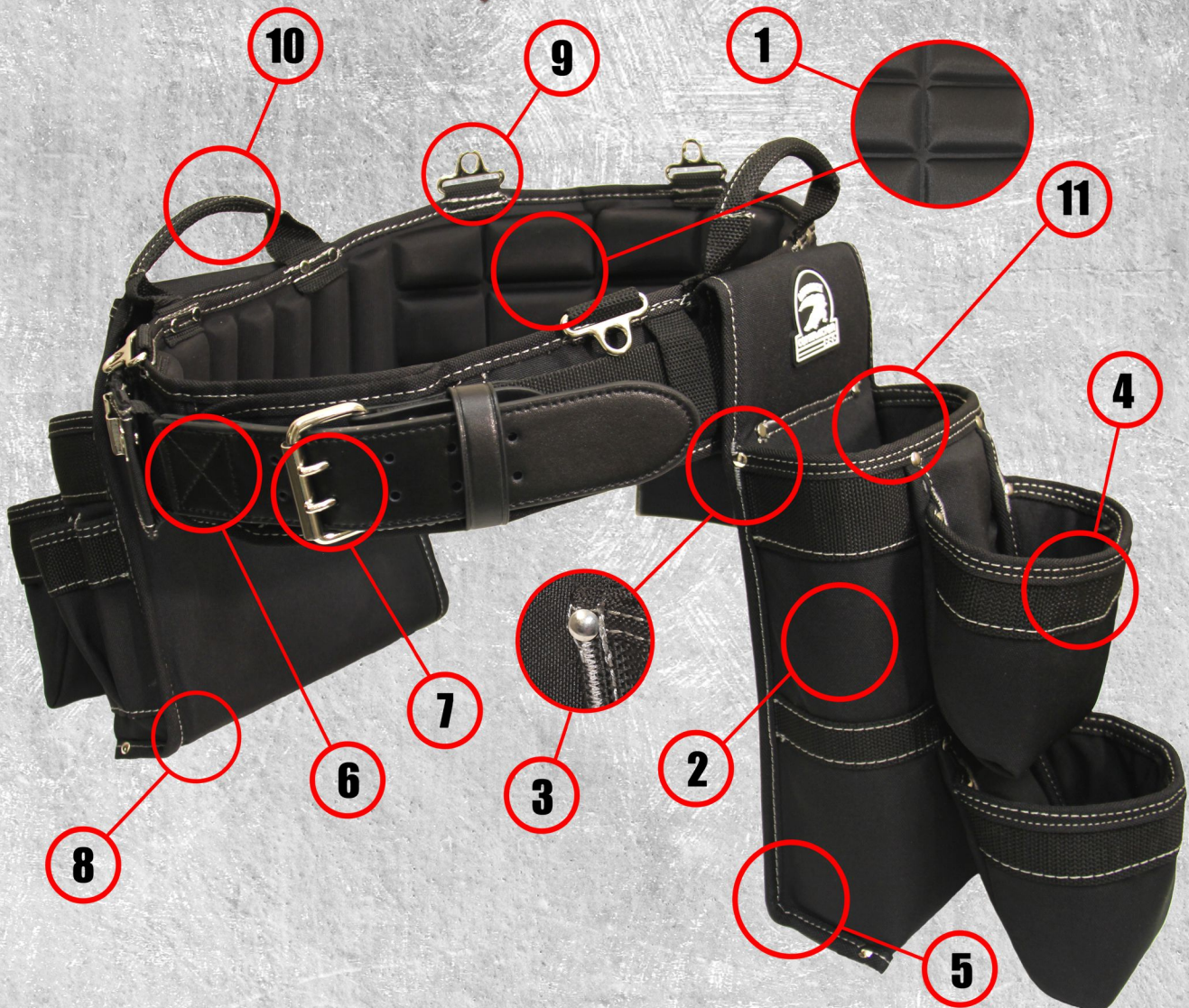
- Adjustable molded foam pads
- 2" wide adjustable nylon straps
- Genuine leather crossover divider
- Heavy duty spring hooks to attach easily onto the Air-Channel Belt

See the rest of our products on our online catalog  
[www.gatorbacktoolbelts.com](http://www.gatorbacktoolbelts.com)





# Outfitting Professionals with Comfortable, Innovative Solutions.



1. Increase your comfort with the first ever **"Molded Air-Channel Comfort System"**. This Unique patent protected design provides comfort, support and ventilation.
2. The double layered, **1250 denier DuraTek fabric** offers durability to all of our products. This means you won't be buying a new belt for years.
3. All stress points are reinforced with **bar-tack stitching** and **heavy duty metal rivets**. This makes our products tear and rip resistant.
4. Pocket openings are made tough by **high density nylon webbing**.
5. **Durable inner lining and plastic inserts** stitched throughout the pouch body and pocket bottoms add stiffness and strength and prevent tools from poking through.
6. **Heavy nylon stitching** around the outside of the leather belt prevents stretching, increasing its life.
7. The **double metal buckle** makes the professional belt tough.
8. A **seamless boxed bottom pouch and pocket design**, provided with stitched-in strong plastic inserts, lets you store more in each pouch.
9. Hate broken suspender clamps? Our **metal ring hook system** reinforced by high-density nylon webbing is the strongest connection available.
10. **High density nylon handles** give you an easy way to transport your belt when it's not on your waist.
11. **Extra-deep main pocket** designed specifically for foundation and concrete work involving long ties (Walers, etc.)