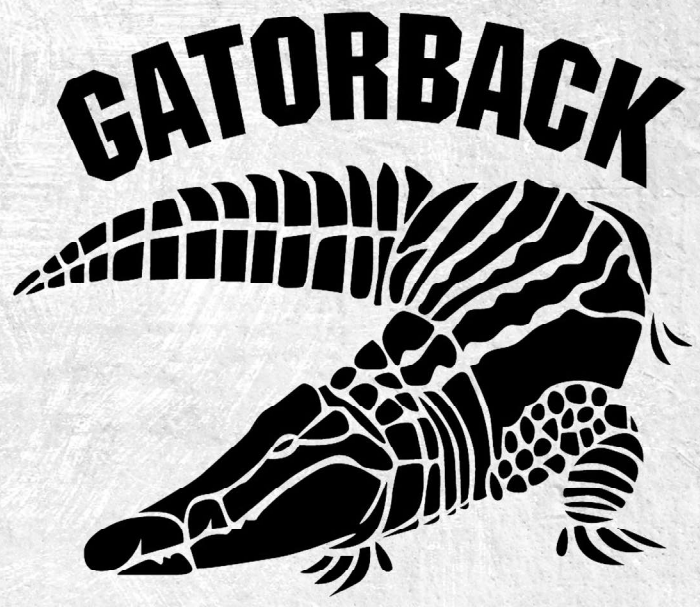
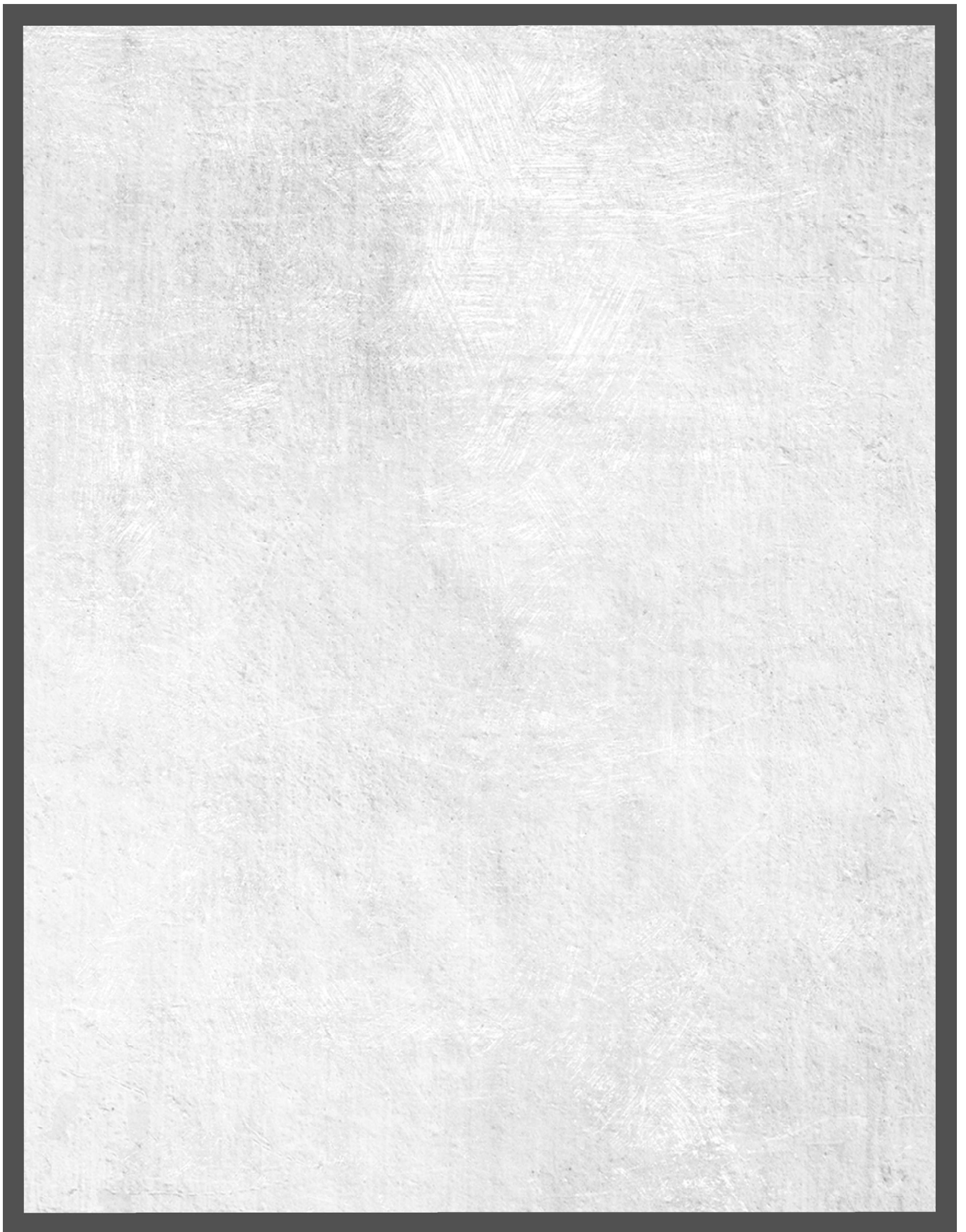


THE MOST
COMFORTABLE
&
INNOVATIVE
TOOL BELT
ON THE MARKET



BY **CONTRACTOR**
PRO





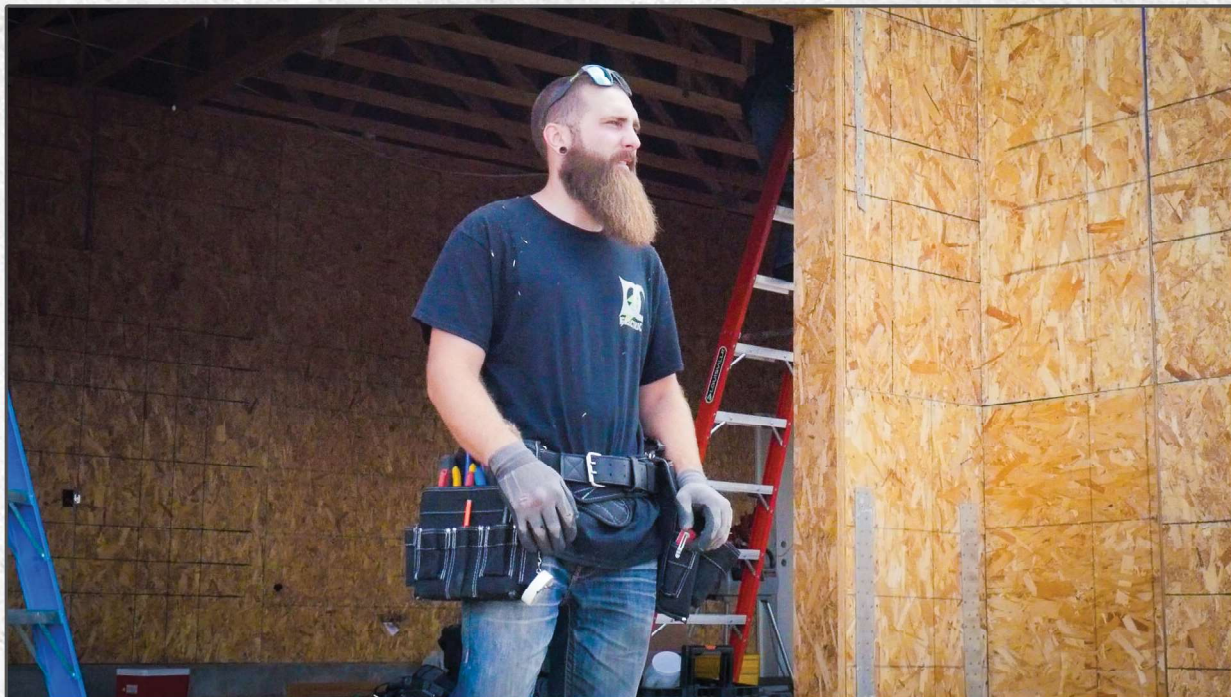
OUR MISSION AND COMPANY

About GatorBack Tool Belts

Come feel the difference! Inspired by a gator's back, Contractor Pro's "Pro-Comfort" tool belts offer incredible comfort, support, and ventilation. First designed and produced in 2002, the GatorBack Pro-Comfort tool belt is still the most comfortable belt on the market. The padding is made from closed cell memory foam which is sculpted to provide air-channels for ventilation. You deserve GatorBack Pro-Comfort.

Our Mission

"Contractor pro is dedicated to providing contractors with tough, innovative products that increase their job effectiveness and maximize their comfort."



OUR GUARANTEES

No Big Box Promise

You will never find our products in big box stores because we sell only to the professional. This protects you against being undersold.

No Minimum Orders

You can make an order as large or as small as you want, giving you the ability to serve your specific needs.

Guaranteed Sale

Risk Free Initial Stocking Order. You may exchange or return initial stock items at any time at no charge.

Warranty Against Defects

Contractor Pro's products are guaranteed to be free of defects in material and workmanship. Liability is limited to a one-year replacement or repair of a defective unit.

Warranty Replacement Policy on Combos

Remove the individual defective item from the combo. Let us know the specific piece and we will replace it. We will not replace or give credit for an entire new combo when only a specific part is defective.



Item shown: #705 - 19 Pocket Zip-Top Carrier w/ Tray

THE GATORBACK TOOL BELT



1. Increase your comfort with the first ever **“Molded Air-Channel Comfort System”**. This Unique patent protected design provides comfort, support and ventilation.
2. The double layered, **1250 denier DuraTek fabric** offers durability to all of our products. This means you won't be buying a new belt for years.
3. All stress points are reinforced with **bar-tack stitching** and **heavy duty metal rivets**. This makes our products tear and rip resistant.
4. Pocket openings are made tough by **high density nylon webbing**.
5. **Durable inner lining and plastic inserts** stitched throughout the pouch body and pocket bottoms add stiffness and strength and prevent tools from poking through.
6. **Heavy nylon stitching** around the outside of the leather belt prevents stretching, increasing its life.
7. The **double metal buckle** strengthens the belt and provides a more secure fit.
8. A **seamless boxed bottom pouch and pocket design**, provided with stitched-in strong plastic inserts, lets you store more in each pouch.
9. Hate broken suspender clamps? Our **metal ring hook system** reinforced by high-density nylon webbing is the strongest connection available.
10. **High density nylon handles** give you an easy way to transport your belt when it's not on your waist.

BELTS & SUSPENDERS



#B400 - PRO-COMFORT BACK SUPPORT BELT

Features our patented molded air-channel back support system with ultra-breathable material and ventilated channels to reduce sweating. This is the most comfortable tool belt on the market!



#550 - LEATHER TIPPED BELT

Sizing:
Small - 31" - 35"
Medium - 35" - 39"
Large - 40" - 44"
Extra-Large - 45" - 49"
2XL - 50" - 54"
3XL - 55" - 60"

#B606 - MOLDED AIR-CHANNEL SUSPENDERS



Four point spring hook suspenders with the same ultra-breathable memory foam padding as our B400 Pro-Comfort belts.



Tool Belt Sizing Guide

All of the Gatorback Tool Belt combos measure the same as our B400 Pro-Comfort Back Support Belt. **Measuring for the best fit should be done with your actual waist size over your clothing.**

[S] Small - 26" to 30" Waist

[M] Medium - 31" to 35" Waist

[L] Large - 35" to 39" Waist

[XL] Extra-Large - 40" to 44" Waist

[2XL] Double Extra-Large - 45" - 49" Waist

[3XL] Triple Extra-Large - 50"-55" Waist

ELECTRICIAN'S TOOL BELT COMBO

#B240



Comes in sizes:
Small - 3XL



#B201

Divided main compartment,
1 upper pocket, 8 interior pockets, 4 exterior slots,
3 exterior pockets, tape chain

Main Pocket:
Height - 8"
Width - 8.5"
Depth - 4"



#B202

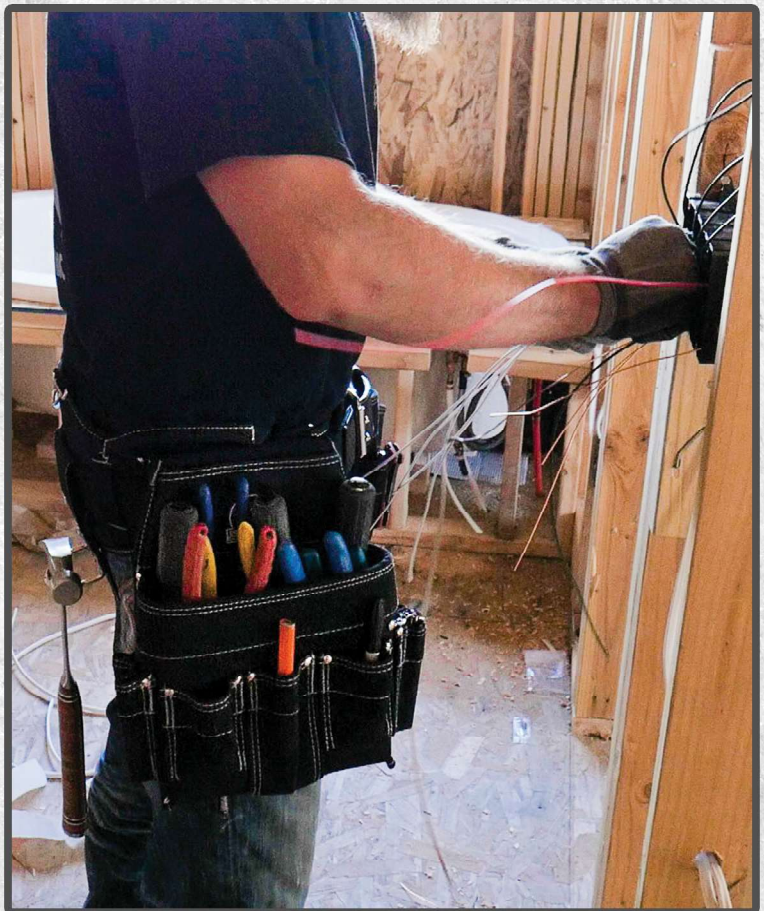
Divided main compartment, 1 upper pocket,
2 interior pockets, 2 large hanging pockets,
1 exterior slot

Main Pocket:
Height - 8"
Width - 9"
Depth - 3"

Front Pockets:
Height - 4"
Width - 4.5"
Depth - 3"

Includes:

- #B201 - Electrician's 18-Pocket Pouch
- #B202 - 9-Pocket Fastener Pouch
- #B400 - Pro-comfort Back Support Belt
- #602 - Hammer Holster
- #604 - Tape Clip



CARPENTER'S TOOL BELT COMBO

#B140



Includes:

- #B101 - Carpenter's Tool Pouch
- #B102 - 7 Pocket Fastener Pouch
- #B400 - Pro-Comfort Back Support Belt
- #602 - Hammer Holster
- #604 - Tape Holder

#B145



Includes:

- #B101 - Carpenter's Tool Pouch
- #B102 - 7 Pocket Fastener Pouch
- #B103 - Single Pouch
- #B400 - Pro-Comfort Back Support Belt
- #602 - Hammer Holster
- #604 - Tape Holder

The B140 and B145
Combos come in sizes:
Small - 3XL



#B101

Main compartment, 1 Upper pocket, 2 Large hanging pockets, 1 Utility knife pocket, 1 Pencil pocket, 1 Hammer loop

Main Pocket:
Height - 8"
Width - 9"
Depth - 3"

Front Pockets:
Height - 4.5"
Width - 5"
Depth - 3"



#B102

Main compartment, 1 upper pocket, 1 interior speed square pocket, 2 large hanging pockets, 1 exterior slot, 1 exterior strap for add-on pouches

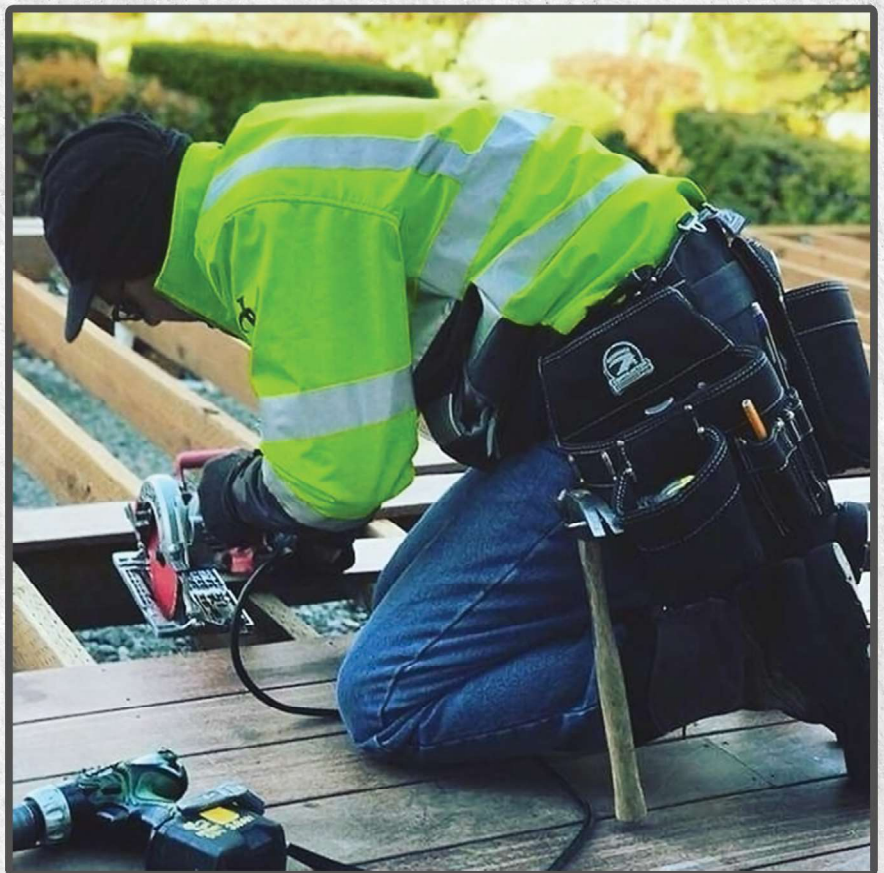
Main Pocket:
Height - 8"
Width - 9"
Depth - 3"

Front Pockets:
Height - 4.5"
Width - 5"
Depth - 3"

#B103

Large single pouch, upper pocket

Main Pocket:
Height - 8"
Width - 9"
Depth - 3"



FOUNDATION SETTER'S TOOL BELT COMBO

#B340



Comes in sizes:
Small - 3XL

First ever tool belt made specifically for the form setting industry. Designed to hold foundation ties and forming tools.

Includes:

- #B301 - 6-pocket contractor's pouch
- #B302 - Foundation Tie Pouch
- #B400 - Pro-Comfort Back Support Belt
- #602 - Hammer Holster
- #604 - Tape Clip

#B301



Main compartment, 1 Upper pocket, 2 Large hanging pockets, 1 Utility knife pocket, 1 Pencil pocket, Hammer loop

Main Pocket:

Height - 8"
Width - 9"
Depth - 3"

Front Pockets:

Height - 4.5"
Width - 5"
Depth - 3"

#B302



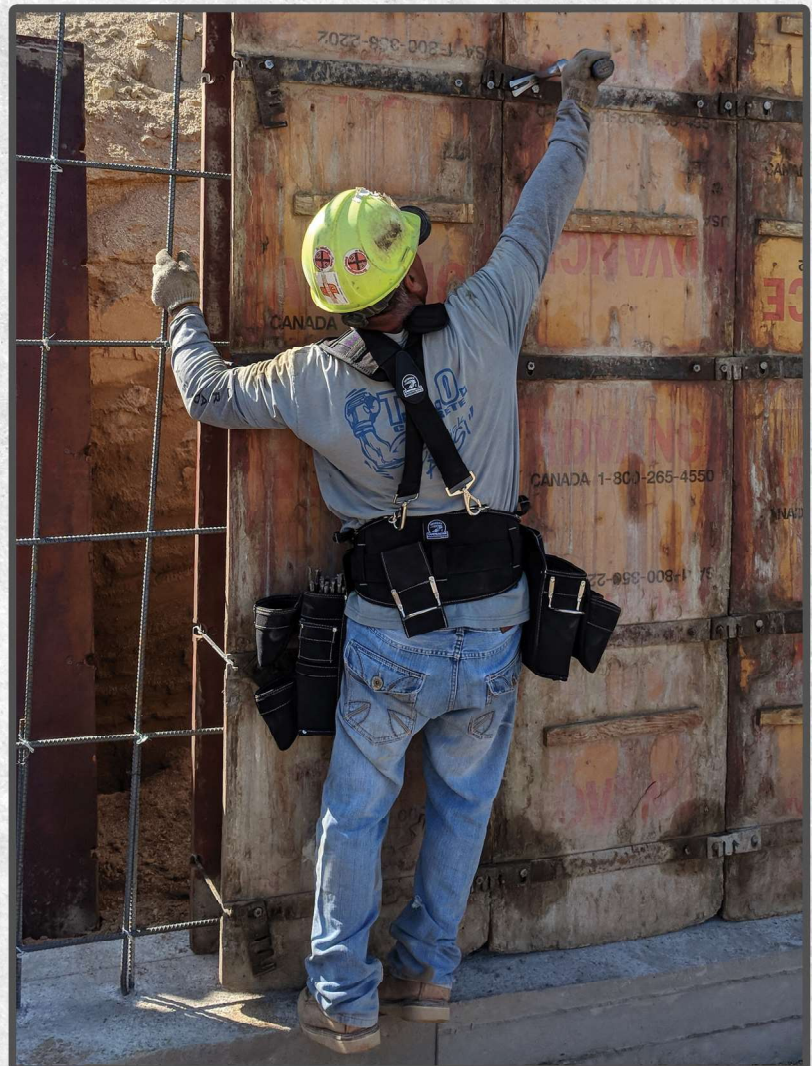
Main compartment for foundation ties, 2 Hanging pockets, 1 Exterior slot

Main Pocket:

Height - 10"
Width - 5.5"
Depth - 3"

Front Pockets:

Height - 4"
Width - 3.5"
Depth - 3.5"



TOOL POUCHES



#B101 - CARPENTER'S TOOL POUCH

- Main compartment
- 1 Upper pocket
- 3 Interior pockets
- 1 Large hanging pocket
- 1 Utility knife pocket
- 2 Pencil/nail set pockets
- Hammer loop

| Main Pocket: | Front Pockets: |
|--------------|----------------|
| Height - 8" | Height - 4.5" |
| Width - 9" | Width - 5" |
| Depth - 3" | Depth - 3" |



#B102 - CARPENTER'S 7-POCKET POUCH

- Main compartment
- 1 Upper pocket
- 1 Interior speed square pocket
- 2 Large hanging pockets
- 1 Exterior slot
- 1 Exterior strap for add-on pouches.

| Main Pocket: | Front Pockets: |
|--------------|----------------|
| Height - 10" | Height - 4" |
| Width - 5.5" | Width - 3.5" |
| Depth - 3" | Depth - 3.5" |



#B103 - SINGLE POUCH

- Single main pouch
- Upper pocket

Dimensions:
 Height - 8"
 Width - 7"
 Depth - 3.5"



#B201 - 18-POCKET ELECTRICIAN'S POUCH

- Divided main compartment
- 1 Upper pocket
- 8 Interior pockets
- 4 Exterior slots
- 3 Exterior pockets
- Tape chain

| Main Pocket: |
|--------------|
| Height - 8" |
| Width - 8.5" |
| Depth - 4" |



#B202 - 9-POCKET FASTENER POUCH

- Divided main compartment
- 1 Upper pocket
- 2 Interior pockets
- 2 Large hanging pockets
- 1 Exterior slot

| Main Pocket: | Main Pocket: |
|--------------|--------------|
| Height - 10" | Height - 10" |
| Width - 5.5" | Width - 5.5" |
| Depth - 3" | Depth - 3" |

TOOL POUCHES CONT.



#B203 - ELECTRICIAN'S MINI POUCH

Main compartment
 1 Upper pocket
 2 Interior pockets
 3 Exterior slots
 2 Exterior pockets
 Tape chain

Main Pocket:
 Height - 6.5"
 Width - 7"
 Depth - 2"



#B209 - Technician Pouch



#B209 - TECHNICIAN POUCH

Electrician's tape chain
 3 Interior pockets
 6 Exterior pockets



#B301 - 6-POCKET FASTENER POUCH

Main compartment
 1 Upper pocket
 2 Large hanging pockets
 1 Utility knife pocket
 1 Pencil pocket
 1 Hammer loop

Main Pocket:
 Height - 8"
 Width - 9"
 Depth - 3"

Front Pockets:
 Height - 4.5"
 Width - 5"
 Depth - 3"



#B302 - FOUNDATION TIE POUCH

Main compartment for foundation ties
 2 Hanging pockets
 1 Exterior slot

Main Pouch:
 Height - 10"
 Width - 5.5"
 Depth - 3"

Front Pockets:
 Height - 4"
 Width - 3.5"
 Depth - 3.5"

#B607 - OPEN ADD-ON POUCH



Dimensions:
 Height - 6"
 Width - 5"
 Depth - 3.5"

#B608 - ZIPPERED ADD-ON POUCH



Dimensions:
 Height - 6"
 Width - 5"
 Depth - 3.5"

TOOL CARRIERS

#208 - TRIPLE THREAT COMBO



Waist Carry



Shoulder Carry



Handle Carry



14 Interior pockets, 1 interior zippered pocket, 3 exterior slots, 2 pencil pockets, tape chain, hammer loop and comes with padded shoulder strap.

#217 - SHOULDER COMBO W/STRAP



Includes:

1 Upper pocket, 12 interior pockets, 2 exterior pockets, 4 exterior slots, tape strap, hammer loop, tool clip, 8-compartment plastic tray, padded shoulder strap

#701 - LARGE OPEN TOP CARRIER

#702 - SMALL OPEN-TOP CARRIER



Main compartment, 20 Exterior & 14 Interior pockets
Metal rings for Pro-Comfort shoulder strap

#701 Dimensions

18" Length
7" - Width
8" - Height

#702 Dimensions

14" Length
6" - Width
8" - Height

#703 - ZIPPER-TOP TOOL CARRIER



Main compartment, 20 Exterior pockets, 14 Interior pockets, Zipper-top enclosure
Metal rings for Pro-Comfort shoulder strap

#703 Dimensions

18" Length
7" - Width
8" - Height

#705 - 19 POCKET ZIP-TOP CARRIER W/TRAY



11 Exterior pockets (3 w/ velcro closures), 14 Interior pockets, 2 Interior compartments w/ 6 pockets, 15-compartment 11" x 16" plastic tray & Shoulder Strap

#705 Dimensions

12" Length
8" - Width
11" - Height

#706 - SUPER TRAY TOOL CARRIER



29 Exterior pockets (3 w/ velcro closures)
1 Large clear pocket with velcro closure
3 Interior compartments w/ 13 pockets
Two 12-compartment 7" x 5 1/2" trays
Electrician's tape chain
Tool strap with buckle
Add-on pouch
Pro-Comfort shoulder strap

#706 Dimensions

19" Length
7" - Width
8" - Height

#707 - SMALL SUPER TRAY CARRIER



14 Exterior pockets
3 Interior compartments w/11 pockets
12-compartment 7" x 5 1/2" tray
Electrician's tape chain
Measuring tape clip
Metal tool clip
Pro-Comfort shoulder strap

#707 Dimensions

8" Length
8" - Width
8" - Height

ACCESSORIES

#601 - DRILL HOLSTER

#601-L LEFT HANDED DRILL HOLSTER



Fits all standard drills and impact drivers.
Slides onto belts up to 2" wide

#602 - HAMMER HOLSTER



Fits standard sized hammers.
Slides onto belts up to 2" wide

#603 - TAPE POUCH



Fits all standard tape measures.
Slids onto belts up to 2" wide

Dimensions:
Height - .5"
Width - 4"
Depth - 2.75"

#604 - TAPE CLIP



Fits all standard tape measure w/ clip.
Slides onto belts up to 2" wide

#609 - FLUID ADD-ON POUCH



Fits most regular sized plastic bottles.
Attaches via metal clip

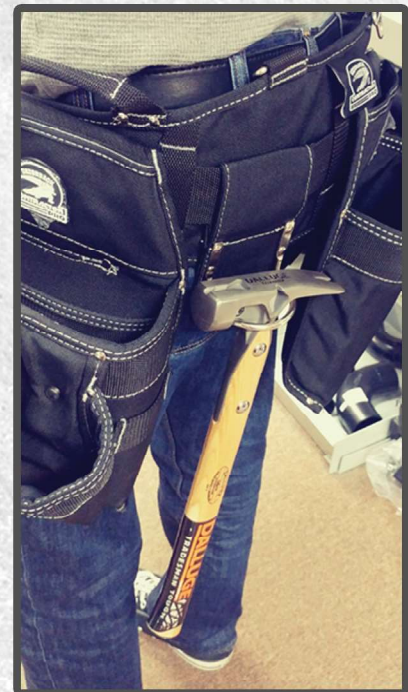
Dimensions:
Height - 4.75"
Width - 3"
Depth - 2.5"

#611 - SMALL TECHNICIAN POUCH



8 Interior Pockets
1 Key Clip
Attaches via metal clip

Dimensions:
Height - 6"
Width - 4.5"
Depth - 1"



#602 - Hammer Holster

WORK GLOVES



#630 - GOAT SKIN DURAGRIP WORK GLOVES



#633 - FINGERLESS WORK GLOVES



#634 - FINGERLESS GOAT SKIN WORK GLOVES



#635 - HIGH-VIZ GOAT SKIN WORK GLOVES



#636 - SYNTHETIC WORK GLOVES
(w/ Touch screen compatible finger tips)

All of the Gatorback work gloves are made to last with breathable materials, knuckle and palm protection and a secure fit wrist velcro strap.

Gloves come in sizes:

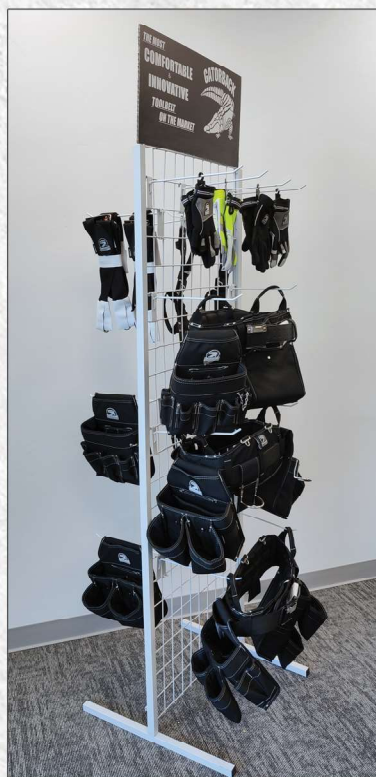
- Medium
- Large
- Extra-Large



THE GATORBACK TOOL BELT



COME FEEL THE DIFFERENCE!



Need a display for your store?

We provide product displays free of charge with orders that meet prepaid freight. These will be shipped along with the order upon request.

The displays include:

- Wire grid wall
- Metal display pegs (16)
- Gatorback sign

Display Dimensions:

- 24" Wide
- 23" Deep (feet of display)
- 77" Tall (86" w/ sign)



U.S. and Foreign Patents
Protected by US PATENT D484, 296. and D489, 036
One or more Pending US Utility Patents and
International Rights Reserved

WWW.GATORBACKTOOLBELTS.COM
PHONE: 801-233-1567
FAX: 801-772-2930