

AXIOM

Mailboxes • Mini Blinds
Wire Shelving • Pet Stations • Benches
Bike Racks • Knox Boxes • Key Cabinets
Mirrors • Fire Extinguishers
Partitions

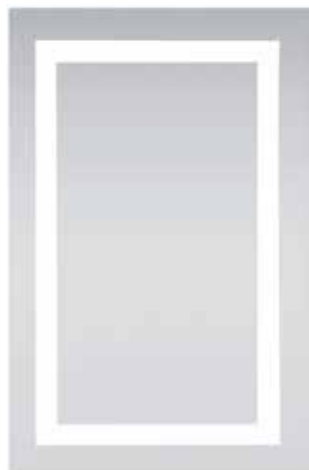
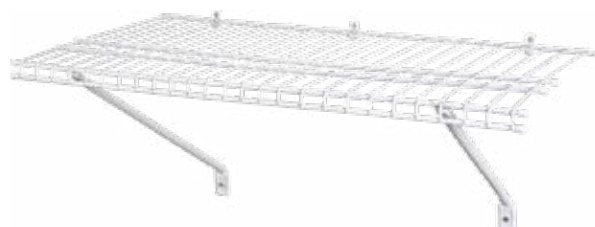


2023

Multi-Family Specialty Catalog

Contents

MAILBOXES	6
MINI-BLINDS	8
ROLLER SHADES	10
WIRE SHELVING	12
TOILET PARTITIONS	14
KNOX BOXES & KEY CABINETS	16
MIRRORS & LED MIRRORS	18
FIRE EXTINGUISHERS	20
PET STATIONS, BIKE RACKS, & BENCHES	22





MAILBOXES

Mailboxes come in multiple sizes and configurations.
Custom configurations are also available.

AVAILABLE FINISHES



RECESSED
MOUNT

CLUSTER
BOXES



ELECTRONIC PACKAGE CONCIERGE



Antique Bronze
(AB)

Black
(BK)

Dark Bronze
(DB)

Gold Speck
(GS)



Postal Grey
(PG)

Sandstone
(SD)

Silver Speck
(SS)

White
(WH)

Mailboxes



MB-100

Pedestal Mounted CBU
8 Mail Slots, 4 Parcel Lockers



MB-101

Pedestal Mounted CBU
16 Mail Slots, 2 Parcel Lockers



MB-102

Pedestal Mounted CBU
13 Mail Slots, 1 Parcel Locker



MB-103

Pedestal Mounted CBU
12 Mail Slots, 1 Parcel Locker



MB-104

Pedestal Mounted CBU
4 Mail Slots, 2 Parcel Lockers



MB-105

Pedestal Mounted CBU
8 Mail Slots, 2 Parcel Lockers



MB-106

Recessed Mounted 4C Mailbox
10 Mail Slots, 2 Parcel Lockers



MB-107

Recessed Mounted 4C Mailbox
29 Mail Slots



MB-108

Recessed Mounted 4C Mailbox
22 Mail Slots

All Mailboxes have 1 Outgoing Mail Slot



MINI-BLINDS

SPECIFICATIONS

» HEAD RAIL

Sturdy, roll formed steel
23 1/2" wide x 1 1/2" height
3000 lbs.

» BOTTOM RAIL

Extruded hollow PVC
23 1/2" wide x 1 1/2" height
3000 lbs.

» SLAT

Tapered, extruded PVC
1 1/2" thick x 8 1/2" wide

» VALANCE

Roll formed, heavy
extruded steel
23 1/2" thick x 12 1/2" wide

» TAPE ROLLER SUPPORT

Injection molded plastic
with metal roller
mounting brackets

» WAND

Injection molded, steel

» TAPE ROLLER

Injection molded plastic
with roller technology

» TILT ROD

Injection molded
1/2" diameter

» FILTER

Injection molded, steel
with roller technology

» BOTTOM RAIL ANCHORS

Injection molded, steel

» LADDER

Injection molded, steel
spring of 1/2" diameter

» CENTER SUPPORT

Injection molded

» MOUNTING BRACKET

Injection molded, steel
with roller technology



Crown Valance with
Low profile headrail



Bottom rail-Hollow
Extruded PVC



Star-Flat PVC resin

Mini-Blinds

AVAILABLE SIZES

36"	48"	60"	64"	72"	84"
23x36	23x48	23x60	35x64	12x72	25x84
35x36	29x48	27x60	36x64	17x72	27x84
47x36	35x48	29x60	52x64	23x72	31x84
59x36	41x48	31x60		24x72	35x84
71x36	47x48	34x60		25x72	36x84
	53x48	34.5x60		27x72	43x84
	59x48	35x60		29x72	48x84
	71x48	36x60		31x72	
	72x48	37x60		34x72	
		39x60		34.5x72	
		43x60		35x72	
		46x60		36x72	
		47x60		37x72	
		48x60		39x72	
		53x60		43x72	
		58.5x60		46x72	
		59x60		47x72	
		63x60		48x72	
		70x60		52x72	
		70.5x60		54x72	
		71x60		59x72	
		72x60		63x72	
				70x72	
				70.5x72	
				71x72	
				72x72	
				85x72	
				95x72	



2 Inch Faux Wood Blinds

- 2" Wide slats for designer look
- 1-year warranty
- 3.35" crown valance
- Heavy duty steel headrail
- Child-safe wand design
- Static resistant slats won't warp or crack



3.5 Inch Economy Blinds

- 3.5" Wide slats for designer look
- 1-year warranty
- Matching crown valance
- Heavy duty steel headrail
- Child-safe wand design
- Stack left or right

AVAILABLE SIZES

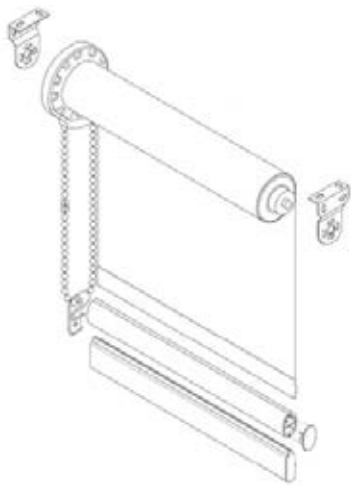
36"	46"	48"	58"	60"	72"	84"	96"
35x36	46x46	23x48	34x58	23x60	34x72	54x84	66x96
47x36		35x48	46x58	35x60	35x72	59x84	78x96
59x36		43x48	58x58	43x60	43x72	66x84	102x96
71x36		46.5x48		47x60	47x72	71x84	104x96
		47x48		59x60	59x72	72x84	110x96
		48.5x48		63x60	63x72	78x84	116x96
		59x48		70x60	71x72	85x84	
		63x48		71x60	72x72	97x84	
		70.5x48		72x60	78x72	102x84	
		71x48		78x60	102x72	104x84	
		72x48		102x60		110x84	
		78x48				116x84	
		102x48					



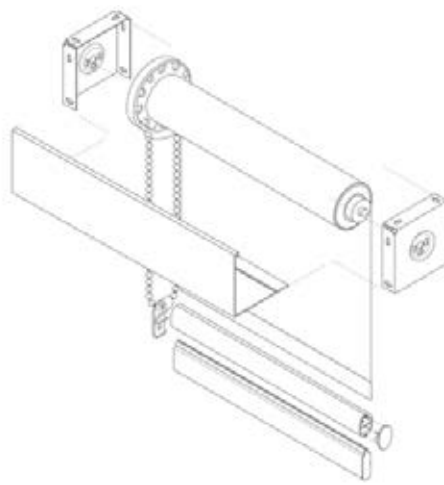
Specifications:

- Flocked blackout material or 7/16" single cell light filtering material.
- Choose a Roman Fold Roll Up for a fuller look at a slight up-charge.
- Optional 3½" dust cover valance or aluminum fascia and other options.
- Raindrop like design gives it a unique look.
- All mounting hardware and installation screws included.
- Continuous loop clutch roller for smooth operation.
- Standard Easy Rise. Optional Cordless, Top Down / Bottom Up, or Motorized.
- Choose from a wide array of colors to match any decor.

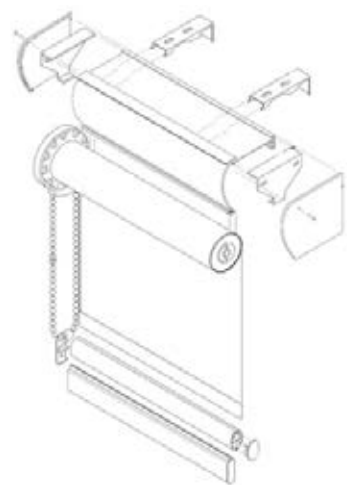
Roller Shades



Standard- No Fascia



Standard- Metal Fascia



Standard- Curved Insert Fascia

Available Materials & Colors

3% (97% of UV is blocked)



Oyster

Beige

Grey

Chestnut

Charcoal

1% (99% of UV is blocked)



Chalk

Alabaster

Grey

Tobacco

Black

Blackout (100% of UV is blocked)

White

Dark Grey

Black



WIRE CLOSET SHELVING

Easy organization

The WireTrac system is the quickest way to get organization in any closet. Use it anywhere in the home: walk-ins, reach-ins, pantries, linen closets, laundry, & more.

Durability

Easy to install, the WireTrac system is fixed to the wall at set heights and provides the strength homeowners need. Steel coated with white epoxy, our wire shelving is durable and made to last.

Value

More economical than wood, WireTrac offers closet organization and functionality for less. Homeowners get storage and affordability.



Wire Shelving



SHELF & ROD

Comes in 12" or 16" depth. Best for bedroom closets and coat closets.



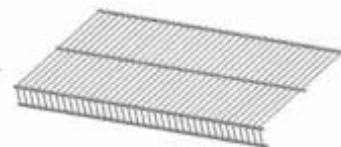
MAXGLIDE SHELF & ROD

Comes in 12" or 16" depth. Allows for hangers to glide the entire length.



LINEN

Comes in 9", 12", or 16" depth. Best for pantry, laundry, and linen closets.



TIGHT MESH

Comes in 9", 12", 16" or 20" depth. Features narrower wire spacing.

LOAD CAPACITY (LBS PER LINEAR FOOT)

Shelf Length	OPEN TO OPEN		WALL TO OPEN		WALL TO WALL	
	SHELF & ROD	LINEN & MESH	SHELF & ROD	LINEN & MESH	SHELF & ROD	LINEN & MESH
1 FOOT	80	80	100	120	120	120
2 FOOT	70	70	80	90	90	90
3 FOOT	50	50	60	75	75	75
4 FOOT	45	45	55	65	65	65
5 FOOT	40	40	50	60	60	60
6+ FOOT	35	35	40	50	50	50



TOILET PARTITIONS



HINY HIDERS PARTITIONS

With tough construction and rugged good looks, Hiny Hiders partitions offer durability that will save customers time, hassle and maintenance costs. Hiny Hiders partitions offer superior value that simply can't be beat by the competition.



Durable HDPE material



Large selection of colors and textures



Customizable Partitions & Engraveable



Fire Rating Options

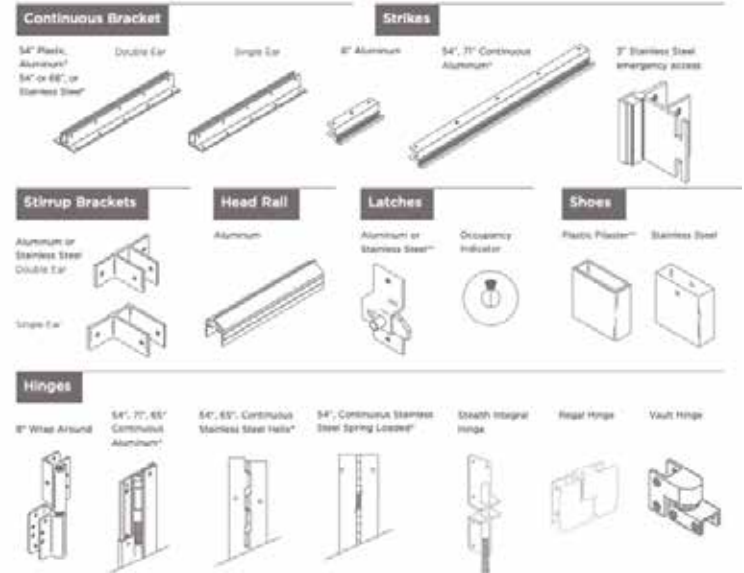


Three ADA Compliant Configurations



25-Year Warranty

Toilet Partitions



TRADITIONAL COLOR COLLECTION



WARM TONE COLOR COLLECTION



BOLD COLOR COLLECTION



METALLIC COLOR COLLECTION





KNOX BOXES & KEY CABINETS

-  Share access with dual lock capability
-  Store up to 50 keys, access cards, or entry items
-  UL 1037, UL 1610, UL 1332, UL 437
-  Highest security when equipped with optional alarm tamper alert
-  Built Knox-Rugged
-  Available in 3 colors
-  Recess Mounting Kit recommended for new concrete or masonry construction



KB-201
Recessed Mount
Aluminum
7"H x 7"W x 4.5"D



KB-202
Recessed Mount
Black
7"H x 7"W x 4.5"D



KB-203
Recessed Mount
Dark Bronze
7"H x 7"W x 4.5"D



KB-204
Surface Mount
Aluminum
7"H x 7"W x 4.5"D

Knox Boxes & Key Cabinets



KB-205
Surface Mount
Black
7"H x 7"W x 4.5"D



KB-206
Surface Mount
Dark Bronze
7"H x 7"W x 4.5"D



KB-207
Recessed Mount
Aluminum
4"H x 5"W x 3"D



KB-208
Recessed Mount
Black
4"H x 5"W x 3"D



KB-209
Recessed Mount
Dark Bronze
4"H x 5"W x 3"D



KB-210
Surface Mount
Aluminum
4"H x 5"W x 3"D



KB-211
Surface Mount
Black
4"H x 5"W x 3"D



KB-212
Surface Mount
Dark Bronze
4"H x 5"W x 3"D



KC-301
240 Key Cabinet
Locking door with 2 keys
16.5"W x 20.125"H x
4.875"D



KT-302
Paper Key Tag
1.25" Diameter
Single hole with split ring
20 per pack



KT-303
Square Key Tag
Slotted for key cabinet
Metal snap hook
20 per pack



KT-304
Key Ring
1" diameter
Split ring design
100 per pack



STANDARD MIRRORS

Conventional Mirrors

Get high-quality, USA-made mirrors perfected by over five decades of experience and more than a billion square feet delivered.

Copper-Free Mirrors

For projects that require enhanced humidity and corrosion resistance, choose our copper-free mirror option, proudly made in our Texas facility.

Manufacturing

Manufactured using mirror quality glass that is in compliance with ASTM C1036 specifications to give you the highest quality mirrors. Mirrors are manufactured in accordance with ASTM C1503.

Standard Sizing

42"H x 30"W	42"H x 32"W	42"H x 34"W	42"H x 42"W	42"H x 48"W
48"H x 30"W	48"H x 32"W	48"H x 34"W	48"H x 42"W	48"H x 48"W

Custom Sizing

Custom sizes are available. Maximum sizes up to 100" x 144".

Mirrors & LED Mirrors



LED MIRRORS

Conventional Mirrors

Get high-quality, USA-made mirrors perfected by over five decades of experience and more than a billion square feet delivered.

Copper-Free Mirrors

For projects that require enhanced humidity and corrosion resistance, choose our copper-free mirror option, proudly made in our Texas facility.

Manufacturing

Manufactured using mirror quality glass that is in compliance with ASTM C1036 specifications to give you the highest quality mirrors. Mirrors are manufactured in accordance with ASTM C1503.

Standard Sizing

36"H x 28"W	36"H x 30"W	36"H x 34"W	36"H x 36"W
-------------	-------------	-------------	-------------

Custom Sizing

Custom sizes are available. Maximum sizes up to 100" x 144".

Fire Extinguishers & Cabinets



FE-501

1A-10B:C Rated



FE-502

3A-40B:C Rated
Available with Brass Valve Upon
Request



FE-503

4A-80B:C Rated
Available with Brass Valve Upon
Request



FE-504

10A-120B:C Rated
Available with Brass Valve Upon
Request



FE-505

1A:K Rated



CLASS A FIRES

Common
Combustibles



CLASS B FIRES

Flammable
Liquids
and Gases



CLASS C FIRES

Energized
Electrical
Equipment



CLASS K FIRES

Cooking Oils, Greases,
and Fats



FEC-601

Glazing, Mounting, Finish, &
Rating are Customizable



FEC-602

Glazing, Mounting, Finish, &
Rating are Customizable



FEC-603

Glazing, Mounting, Finish, &
Rating are Customizable



FEC-604

Glazing, Mounting, Finish, &
Rating are Customizable



PET STATIONS, BIKE RACKS, & BENCHES



PS-4001

Poly Pet Station
Reflective 12"x18" Sign
10 gal. poly receptacle
with lid - 21" x 13" x 12"
4'8" telescopic post



PS-4002

Aluminum Pet Station
Reflective 12"x18" Sign
10 gal. steel receptacle
with lid - 21" x 13" x 12"
4'8" telescopic post



PS-4003

Hanging Bag Pet Station
Reflective 12"x18" Sign
10 gal. steel receptacle
with lid - 21" x 13" x 12"
4'8" telescopic post



PS-4004

Junior Bag Dispenser
R12 gauge powder coated
aluminum
Front locking access panel
Clearly posted installation
instructions and mounting
hardware included

Pet Stations, Bike Racks, & Benches



ASB-01

Arched Stepping Bones
Tough Thermoplastic coating
Each step is 16"W x 12"D
84" Overall Length



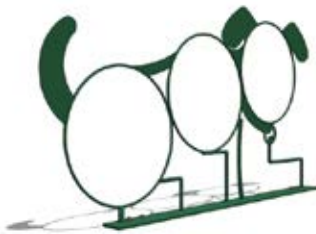
BT-02

Bone Table
Tough Thermoplastic coating
60"L x 24"W



BB-03

Dog Themed Bone Bench
Tough Thermoplastic coating
Ground or surface mounting
72" Long - Steel frame



DSJ-04

Three Hoop Dog Shaped Jump
Securely mounted with 1.9" 13 gauge
tubing
Secure anchors
80"L x 42"H 24" Openings



BLP-05

Bone Leash Post
Four places for multiple leashes
Bone themed for dog parks
36" High made of 2.375" Piping



TR-06

Dog Themed Trash Receptacle
32 gallon capacity
Comes with 1 box of 33 gal. liners
Tough thermoplastic coating



TR-07

Steel Trash Receptacle
10 gallon with hinged lid
Includes mounting hardware and box of 50
can liners



LB-08

Litter Pick-up Bags
13" x 8" - 0.8 mil thickness
200 bags per roll
10 rolls per case



LB-09

Header Station Pick-up Bags
13" x 8" - 0.8 mil thickness
100 bags per pack
Replacement bags for DCA-415044



CL-10

Can Liners
10-15 gallon
1.5 mil thickness
50 per box



LB-11

13" x 8" - 0.8 mil thickness
200 bags per roll
Fits many pet stations

Pet Stations



PS-12
50" Left Door/Right Drain

PS-13
50" Right Door/Left Drain



PS-14
62" Left Door/Right Drain

PS-15
62" Right Door/Left Drain

Benches



B-16



B-17



B-18



B-19

Tables & Chairs



TC-20



TC-21



TC-22



TC-23

Trash & Recycling



TR-24



TR-25



TR-26



TR-27

Bike Racks



BR-28



BR-29



BR-30



BR-31

Cigarette Receptacles



CR-32



CR-33



CR-34



CR-35

Planters



P-36



P-37



P-38



P-39

Umbrellas



U-40



U-41



U-42

Bollards



B-43



B-44



B-45



B-46

Grills



G-47



G-48

911 Call Boxes



CB-49

Wired/Wireless Connection
Programmed to call 911



CB-50

Wired/Wireless Connection
Programmed to call 911

Low Voltage Media Center



LVMC-51



Reusable Construction Entrance



INSTALL IN
30
MINUTES



CRUSH RATING
2.8
MILLION LBS.



LIFE SPAN
10+
YEARS



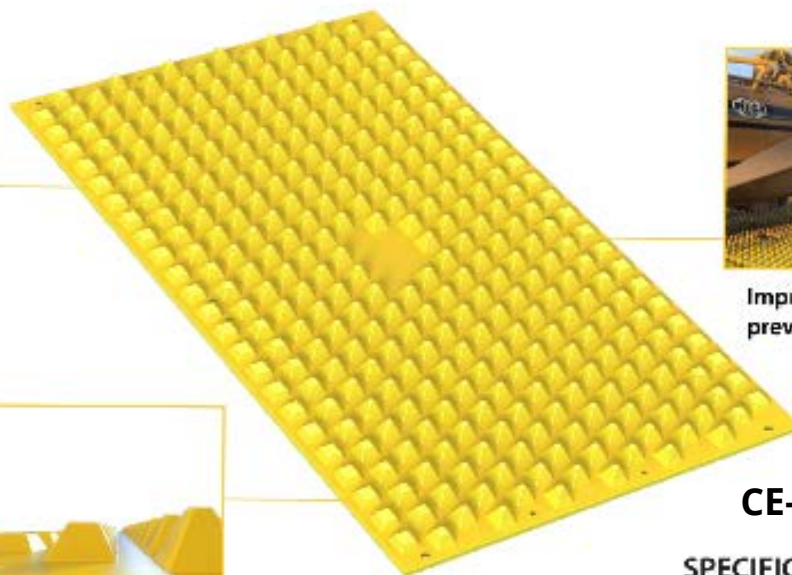
Pyramids effectively clean tires through compression and stretching without damage to the tire



Improves compliance, prevents road hazards



Built-in ramp for gradual transition onto and off of mats



CE-52

SPECIFICATIONS
Mat Size: 12'(w) x 7'(l) x 3 3/4"(h)
Pyramid Size: 2 7/8"(h)
Mat Weight: 420 lbs.
Lifespan: 10+ years