



Jerry Sloan

Broker/Owner
(308) 631-5520

Jerry@SloanAgLand.com

Sloan AgLand

www.SloanAgLand.com

Farm & Ranch Real Estate Sales

190500 Hwy. 71
Gering, NE 69341

Licensed in Nebraska
& Wyoming

Scotts Bluff County Irrigated Land For Sale



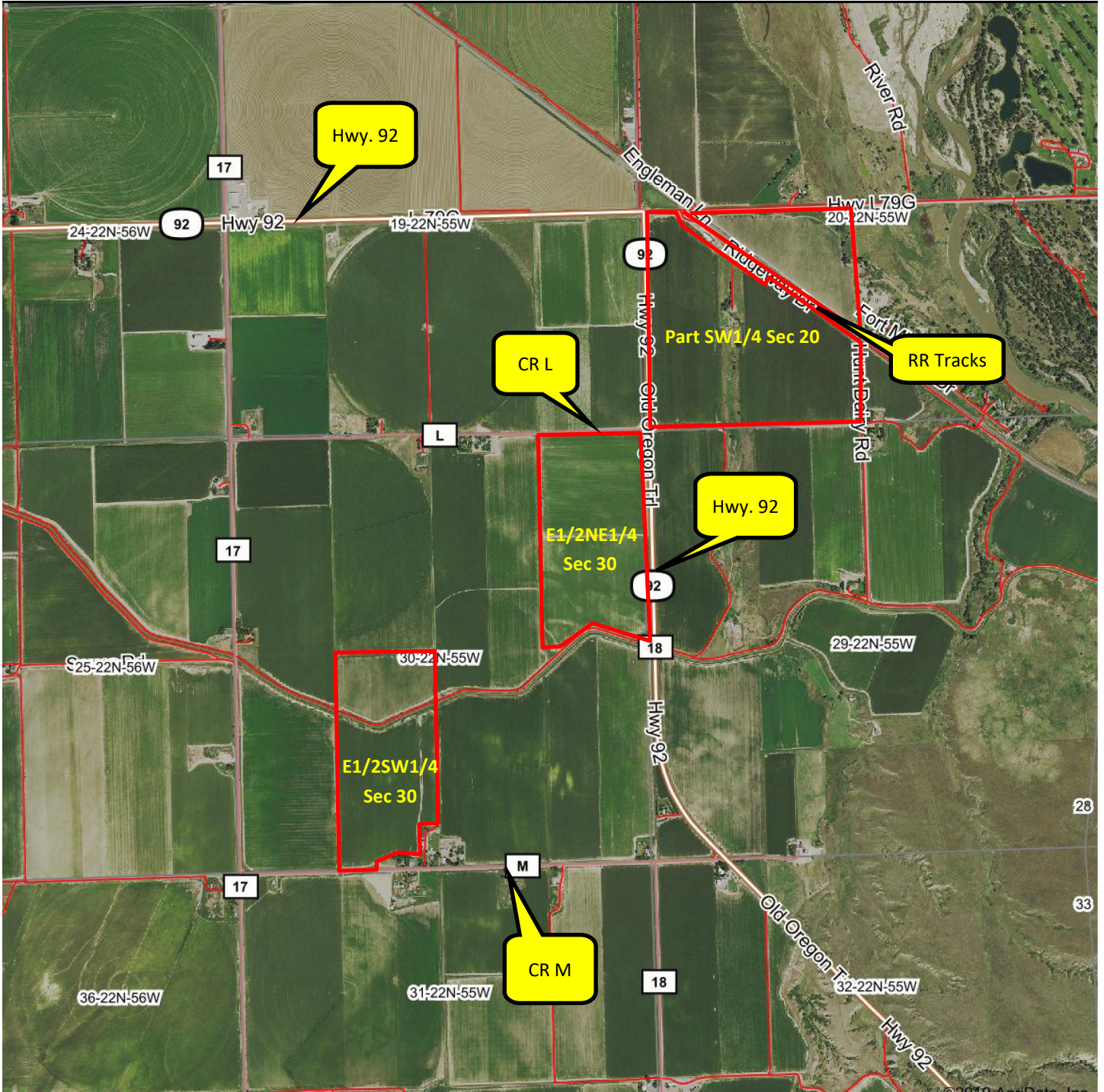
BJR Properties, LLC

E1/2NE1/4 Section 30-T22-R55

99.1% Class I Soils

- ◆ **78 acres of Farmland For Sale** on the west side of the Scotts Bluff National Monument. The farm is on the west side of Hwy. 92 and the south side of CR L (road to Barn Anew).
- ◆ **Farmed acres:** 74.33
- ◆ **Surface Water Rights:** **78 acres of surface water rights** under the Mitchell Irrigation District. 2020 irrigation tax is \$21/acre = \$1,638.
- ◆ **2019 Real Estate Taxes:** \$3,513.16
- ◆ **Soils:** 99.1% Class I Mitchell Silt Loam, 0 to 1 % slope.
- ◆ **Legal Description:** Part of the E1/2NE1/4 Section 30-T22N-R55W of the 6th P.M., Scotts Bluff County, Nebraska.
- ◆ **Asking Price is \$253,500 = \$3,250/acre**
- ◆ **Listing Agent:** Jerry Sloan - (308) 631-5520; Email: Jerry@SloanAgLand.com

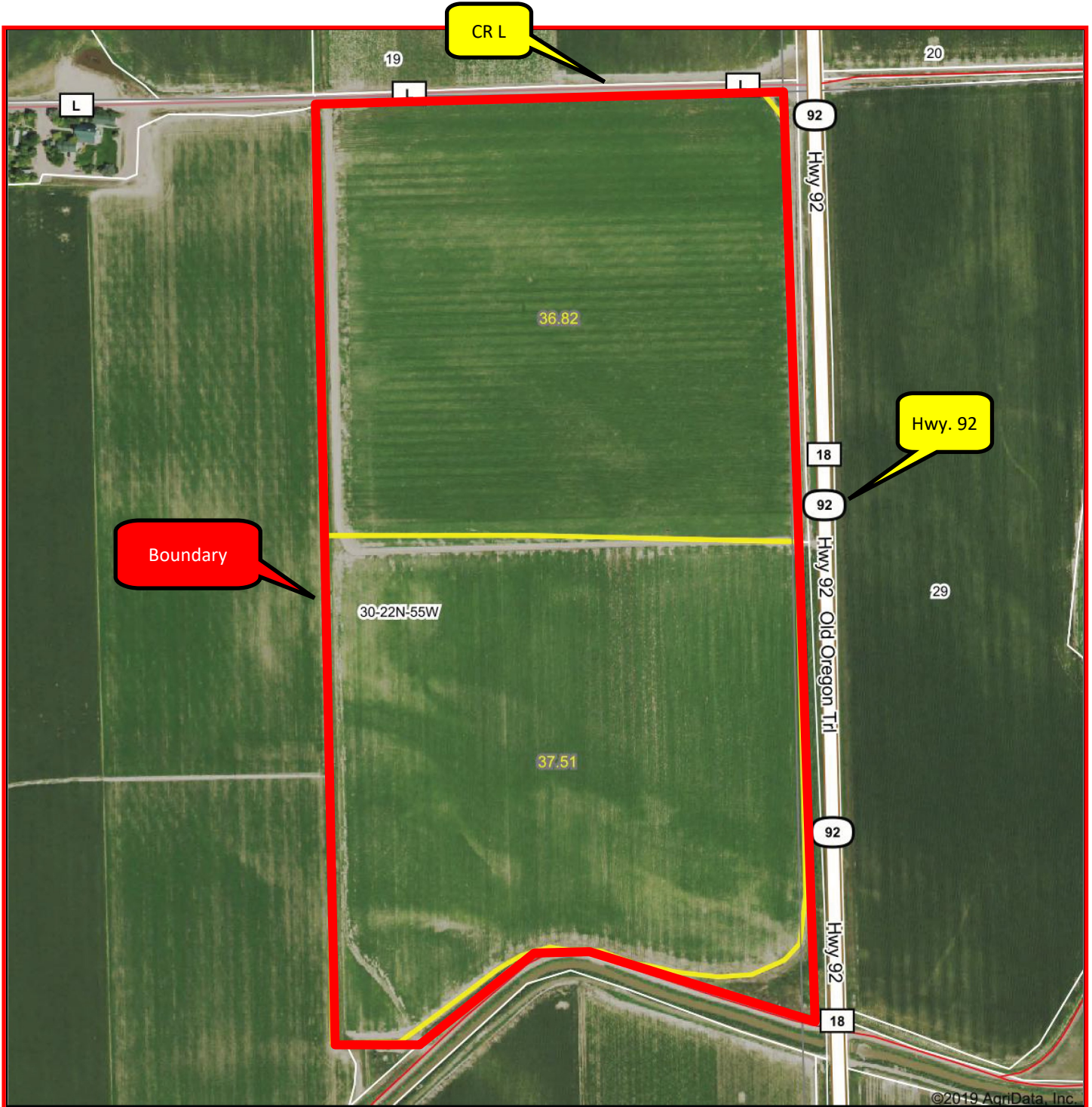
BJR Properties, LLC aerial map



Information contained herein was obtained from sources deemed reliable. We have no reason to doubt the accuracy, but we do not guarantee it. Prospective Buyers should verify all information, including items of income and expense. All maps provided by Sloan AgLand are approximations only, to be used as a general guideline, and not intended as survey accurate.

BJR Properties, LLC

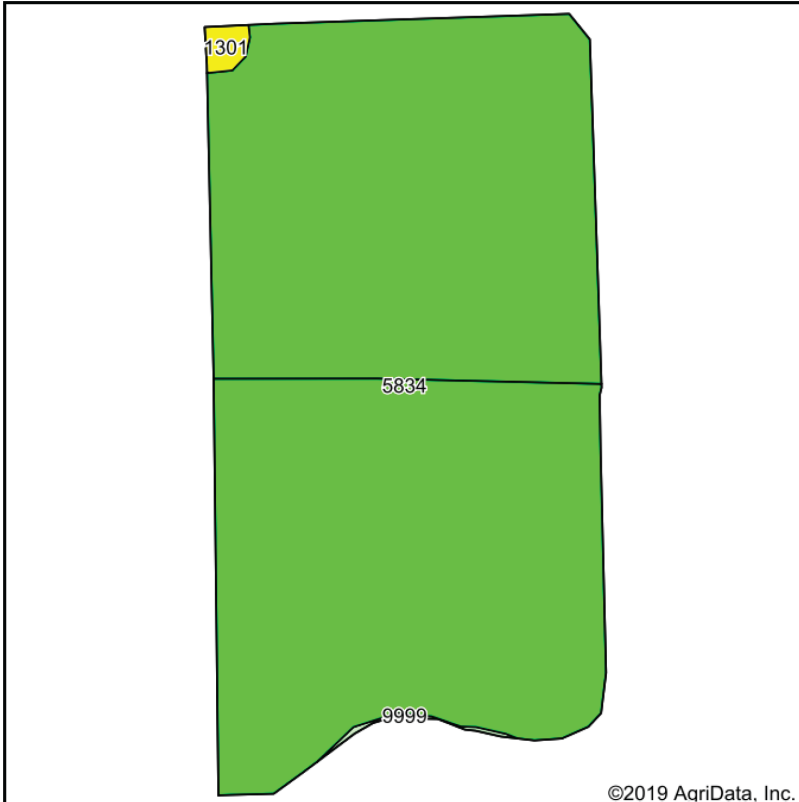
E1/2NE1/4 Section 30 aerial map



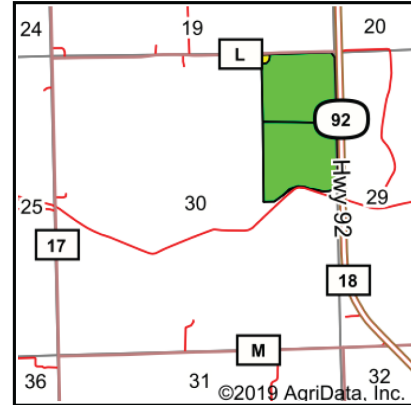
Information contained herein was obtained from sources deemed reliable. We have no reason to doubt the accuracy, but we do not guarantee it. Prospective Buyers should verify all information, including items of income and expense. All maps provided by Sloan AgLand are approximations only, to be used as a general guideline, and not intended as survey accurate.

BJR Properties, LLC

E1/2NE1/4 Section 30 soil map



Soils data provided by USDA and NRCS.



State: **Nebraska**
 County: **Scotts Bluff**
 Location: **30-22N-55W**
 Township: **Mitchell**
 Acres: **74.33**
 Date: **1/11/2020**

Maps Provided By:

 CUSTOMIZED ONLINE MAPPING
 © AgriData, Inc. 2019 www.AgriDataInc.com



Area Symbol: NE157. Soil Area Version: 18

Code	Soil Description	Acres	Percent of field	Irr class Legend	Non-Irr Class	Irr Class	SRPG	*n NCCPI Corn	*n NCCPI Small Grains
5834	Mitchell silt loam, 0 to 1 percent slopes	73.69	99.1%		IIIc	I	48	14	23
1301	Bayard fine sandy loam, 3 to 6 percent slopes	0.47	0.6%		IVe	IIIe	42	11	24
9999	Water	0.17	0.2%				0	0	0
Weighted Average							47.9	*n 13.9	*n 23

*n: The aggregation method is "Weighted Average using major components"
 Soils data provided by USDA and NRCS.

Nebraska Panhandle Road Map

