



White's Ferry Manor

Modern. Rustic. ONE OF A KIND VENUE.



We offer a variety of amenities, including full service catering, in-house AV & Sound, and Coordination. Our team has years of experience in event planning and we are **committed to providing exceptional service to make your day perfect.** We are confident that you will love our venue.



WHITE'S FERRY MANOR
"WEDDINGS & EVENTS"

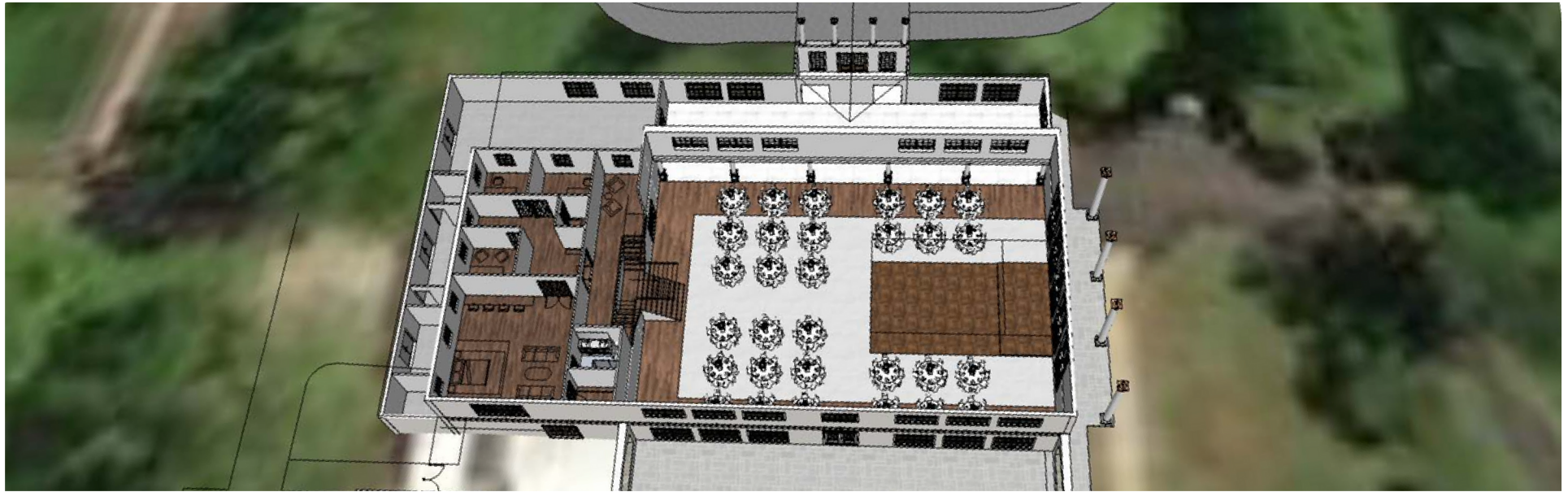
Our **newly renovated** event space is now ready to welcome you and your guests. Set amidst the picturesque beauty of Virginia wine country, our venue offers a **breathtaking backdrop** of the country side for your special day. Dreaming of an outdoor ceremony with **stunning views**, or an indoor reception in our elegant ballroom? Inquire with us now!





NEW STRUCTURE COMING MAY 2025





Our new event space has a capacity of up to 450 guests, offering **plenty of space for dancing and socializing**. To elevate your experience, we offer **top-notch sound and lighting** packages that will set the perfect ambiance for your event. And when it comes to catering, we've got you covered with our **all-inclusive packages**.

Just sit back, relax, and let us bring your vision to life.





WHITE'S FERRY MANOR
"WEDDINGS & EVENTS"

Our Packages Includes:

- Exclusive Event Space
- Multiple Ceremony Areas
- White Dance Floor
- Stage Riser
- Reception Chairs
- Ceremony Chairs
- All Tables & Linens
- Silverware, Glassware, Tableware
- Food Serving Equipment & Food Chafers
- Bar Mixers, Sodas, Ice
- Waitstaff, Licensed Bartenders
- Bridal Suite & Groom's Suite
- Golf carts and much more



@WhitesFerry_Manor



2025 VENUE PACKAGES

The facility rental prices listed below provides; exclusive use of the property for a **11 hour period**. (3 hours of set up, 6 hours of guest event time and 2 hour for breakdown). Each additional hour, \$650.00++

The latest events may run on Friday and Saturdays is 12:30am, and 11:30pm Sunday through Thursday.

Guests	Saturdays	Fridays & Sundays	Weekdays
Up to <u>150</u>	\$9,950	\$9,500	\$8,950
Up to <u>300</u>	\$12,950	\$11,500	\$10,950
Up to <u>450</u>	\$15,950	\$14,500	\$13,950

Facility Rental + 6% Sales Tax + 22% Service Charge

Ceremony: If you are holding your reception at the White's Ferry Manor, you may hold ceremony onsite as well, *at no additional charge*.



WHITE'S FERRY MANOR
"WEDDINGS & EVENTS"

Equipment Package

\$25 Per Person

Tablecloths & Napkins

Tableware, Silverware, China, Glassware,
Barware, Chargers, Food Serving
Equipment, Food Chafers, Displays, Bowls,
Platters, and much more

(The Equipment Package is not optional. It will be available to licensed caterers only.)





Beverage Package \$5 Per Person

Ice / Sodas / Lemonade
Hot Tea

Bar Mixers Package \$5 Per Person *(Required with Alcohol Only)*

Bar Mixers / Juices / Garnishes
Specialty Cocktails



The Service Charge covers waitstaff & bartenders,
Per 25 guests one server, per 100 guests one bartender for approximately 8 hours.

(The Beverage Package and Staffing is not optional. It will be available to all guests throughout the event)