



White's Ferry Manor

Modern. Rustic. ONE OF A KIND VENUE.



We offer a variety of amenities, including full service catering, in-house AV & Sound, and Coordination. Our team has years of experience in event planning and we are **committed to providing exceptional service to make your day perfect.** We are confident that you will love our venue.



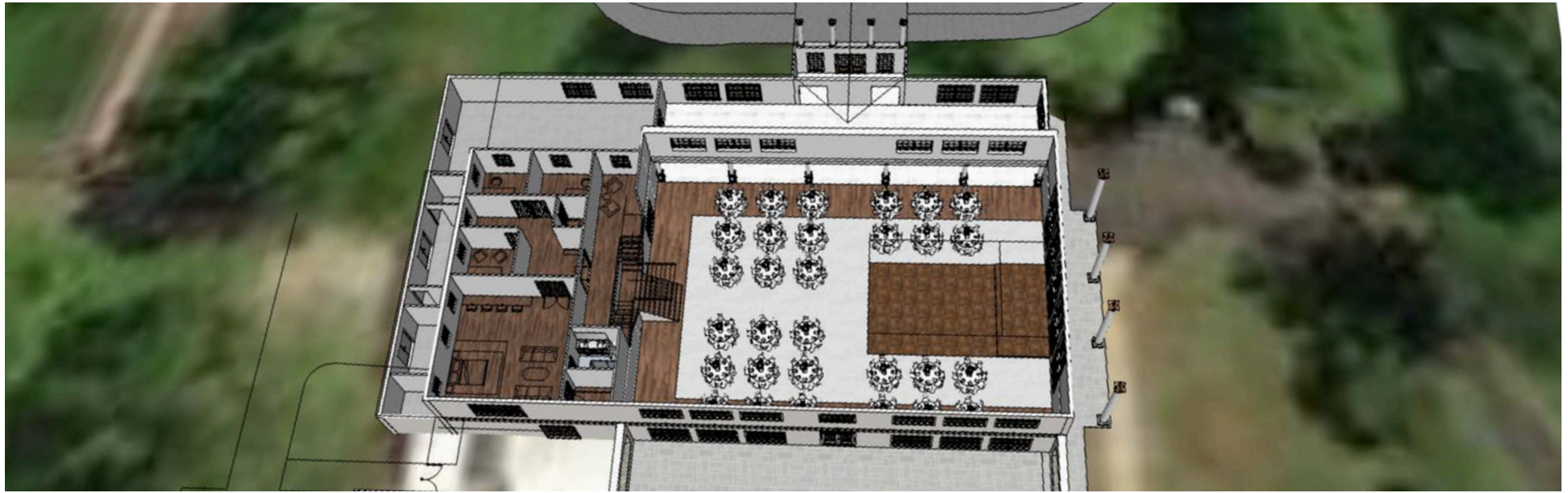
Our **newly renovated** event space is now ready to welcome you and your guests. Set amidst the picturesque beauty of Virginia wine country, our venue offers a **breathtaking backdrop** of the country side for your special day. Dreaming of an outdoor ceremony with **stunning views**, or an indoor reception in our elegant ballroom? Inquire with us now!





NEW STRUCTURE COMING MAY 2025





Our new event space has a capacity of up to 450 guests, offering **plenty of space for dancing and socializing**. To elevate your experience, we offer **top-notch sound and lighting** packages that will set the perfect ambiance for your event. And when it comes to catering, we've got you covered with our **all-inclusive packages**.

Just sit back, relax, and let us bring your vision to life.





WHITE'S FERRY MANOR
"WEDDINGS & EVENTS"

Our Packages Includes:

- Exclusive Event Space
- Multiple Ceremony Areas
- White Dance Floor
- Stage Riser
- Reception Chairs
- Ceremony Chairs
- All Tables & Linens
- Silverware, Glassware, Tableware
- Food Serving Equipment & Food Chafers
- Bar Mixers, Sodas, Ice
- Waitstaff, Licensed Bartenders
- Bridal Suite & Groom's Suite
- Golf carts and much more



@WhitesFerry_Manor



2025 VENUE PACKAGES

The facility rental prices listed below provides; exclusive use of the property for a **11 hour period**. (3 hours of set up, 6 hours of guest event time and 2 hour for breakdown). Each additional hour, \$650.00++

The latest events may run on Friday and Saturdays is 12:30am, and 11:30pm Sunday through Thursday.

Guests	Saturdays	Fridays & Sundays	Weekdays
Up to <u>150</u>	\$9,950	\$9,500	\$8,950
Up to <u>300</u>	\$12,950	\$11,500	\$10,950
Up to <u>450</u>	\$15,950	\$13,500	\$12,950

Facility Rental + 6% Sales Tax + 22% Service Charge

Ceremony: If you are holding your reception at the White's Ferry Manor, you may hold ceremony onsite as well, *at no additional charge*.



Equipment Package

\$25 Per Person++

Tablecloths & Napkins

Tableware, Silverware, China, Glassware,
Barware, Chargers, Food Serving
Equipment, Food Chafers, Displays, Bowls,
Platters, and much more

(The Equipment Package is not optional)



Beverage Package \$5 Per Person++

Ice / Sodas / Lemonade
Hot Tea

Bar Mixers Package \$5 Per Person++ *(Required with Alcohol Only)*

Bar Mixers / Juices / Garnishes
Specialty Cocktails



The **Service Charge** covers waitstaff & bartenders,
Per 25 guests one server, per 100 guests one bartender for approximately 8 hours.

(The Beverage Package and Staffing is not optional. It will be available to all guests throughout the event)