



### Herbal Buds

www.herbalbuds.com

603-696-6136

Sample 810-090324-006

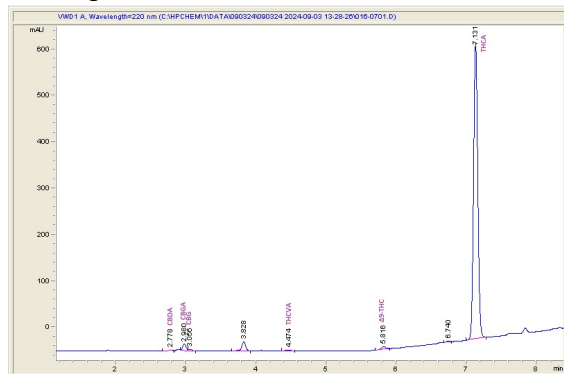
BB Sk. Breath

Sample Submitted: 09-03-2024; Report Date: 09-09-2024

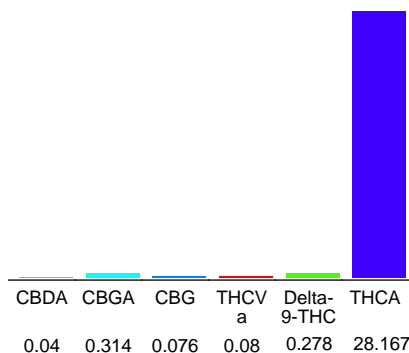
### BB Sk. Breath

Plant Material: Hemp Flower

#### Chromatogram



#### Cannabinoid Profile



#### Cannabinoid Profile by HPLC

0.28%

Delta-9-THC

0.00%

CBD

28.96%

Total Cannabinoids

Cannabinoid	% wt	mg/g
CBDA	0.04	0.4
CBGA	0.314	3.14
CBG	0.076	0.76
THCVa	0.08	0.8
Delta-9-THC	0.278	2.78
THCA	28.17	281.67
<b>Total Cannabinoids</b>	<b>28.96</b>	<b>289.6</b>
<b>Calculated Total THC</b>	<b>25.49</b>	<b>254.90</b>
<b>Calculated CBD Yield</b>	<b>0.04</b>	<b>0.35</b>

Calculated Total THC = Delta-9-THC + 0.877 \* THCA

Calculated Maximum CBD Yield = CBD + 0.877 \* CBDA

#### Marin Analytics, LLC

250 Bel Marin Keys Blvd, Suite D4  
Novato, CA 94949

833-321-TEST / info@marinanalytics.com

Mike Clemmons  
Lab Manager

This sample has been tested by Marin Analytics, LLC using valid testing methodologies and a quality system. Values reported relate only to the sample tested. Marin Analytics, LLC makes no claims as to the efficacy, safety, or other risks associated with any detected or non-detected levels of any compounds reported herein. This Certificate shall not be reproduced except in full without the written approval of Marin Analytics, LLC. Copyright 2023 Marin Analytics, LLC All Rights Reserved.