

OUR STORY – YOUR HOME

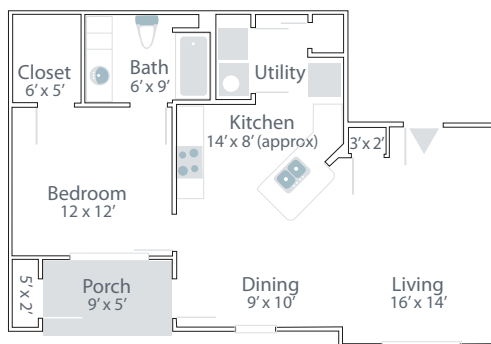
We want to provide the best affordable living possible. We back up that promise with experience that allows us to deliver. From the start, our vision has been to make this place not only your home, but also a community where you'll thrive. Fish Pond at Portland will be a luxury 60-unit Independent Senior Living Community (62+) offering affordable rents to qualified residents. The community will offer single-story living in both one and two-bedroom floorplans.

We anticipate the property will be ready for occupancy in Fall of 2019. **For more information, or to reserve your home please call 361-207-9880, email leasing@fishpondliving.com, or visit our website fishpondliving.com for more information.**



Two Bedrooms / Two Baths

1,178 square feet



One Bedroom / One Bath

916 square feet

*Rent will vary depending on the Household Income Level for Qualified Residents. Income limits for Qualified Residents will range from 30% to 60% of Area Median Income, adjusted for Household Size. Fish Pond at Portland will also have units without any income limitations available at prevailing market rents.



WE'D LOVE TO TALK

(361) 207-9880

1800 Akins, Portland, TX 78374

leasing@fishpondliving.com

@fishpondliving on Facebook

www.FishPondLiving.com





Community Amenities

- > Gated access and fully fenced
- > Swimming pool with beach entry
- > Clubhouse / leasing office featuring:
 - Fitness center
 - Business center with free wifi
 - Sitting areas and tables
 - Kitchen for community events

Community Site-plan



- > Outdoor seating areas
- > Dog park
- > Community garden

Unit Amenities

- > Single story four-plex cottage design
- > Spacious and open one- and two-bedroom floorplans
- > Front porch and covered patios
- > Vaulted ceilings in living areas
- > Spacious kitchen with breakfast bar
- > Large walk-in closets
- > All electric units (safe, efficient, pay a single bill)
- > Full-size washer/dryer hook-ups
- > High efficiency central HVAC
- > Shaker style, full hardwood kitchen and bathroom cabinets

- > Granite kitchen and bathroom countertops
- > Under-mount stainless sinks
- > Stainless steel kitchen appliances
- > Low maintenance vinyl plank flooring throughout
- > Energy efficient LED lighting
- > Walk in showers or tub / shower combos
- > Ceiling fans
- > Water / sewer included
- > Covered parking available