

Drawer Multicart

Assembly Instructions

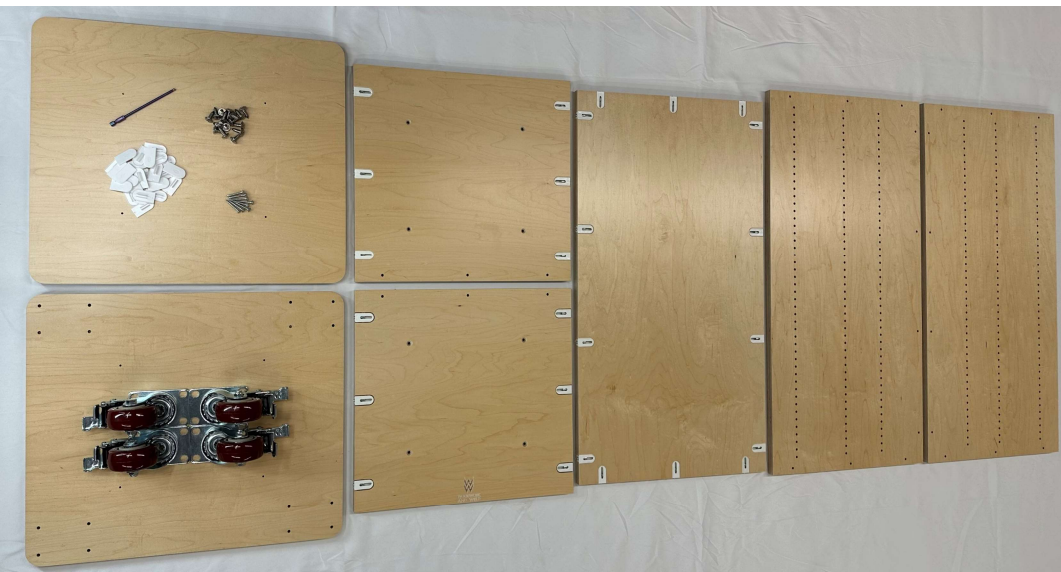


Video
instructions



Safety Disclaimer

Depending on what you load into your multicart, you could introduce the risk of it being a tipping hazard. I have included wall anchor hardware with your product so that you can safely secure the cabinet to a wall to prevent this from happening. I recommend storing heavier items at the bottom. Unload the cabinet before rolling it, especially on an incline/decline or rough surface and only open 1 drawer/tray at a time.



Parts List

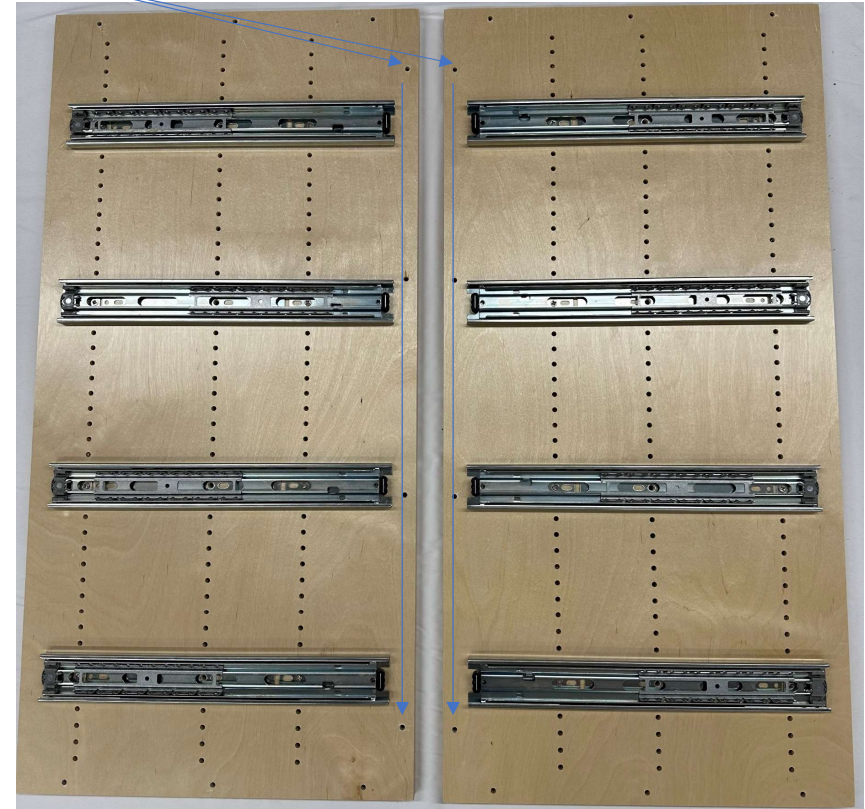
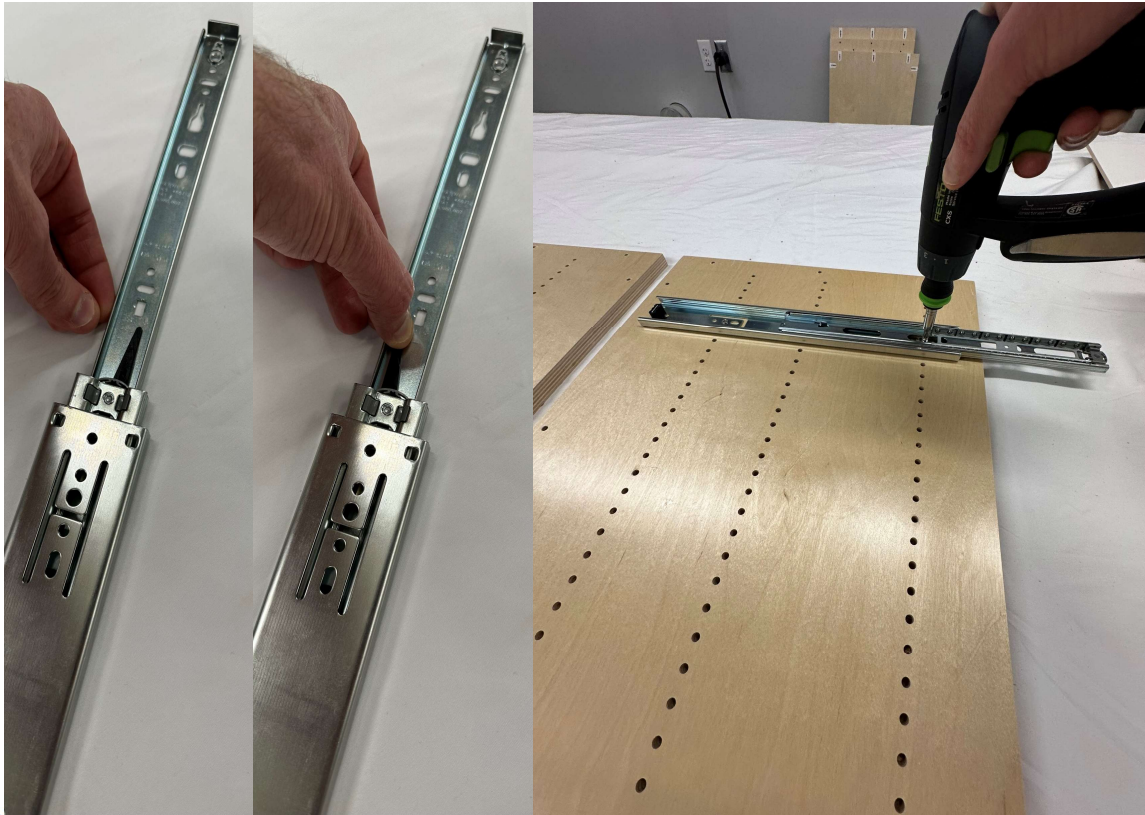
- Cabinet top, bottom, back, sides and the applied top and bottom
- Cabineo tool (4mm ball end bit) to tighten Cabineos
- Qty 26 of Cabineos (come pre-attached to cart) allowing you to attach the carcass pieces together
- Qty 26 Cabineo caps to cover the fasteners if desired
- 4 locking/swivel casters if you want your cart mobile
- Qty 16 of #14x3/4" truss head screws to secure casters to cabinet
- Qty 8 of #8x1.25" Phillips flat head screws to hold the top & bottom to the cart
- Qty 4 pairs of 14" drawer slides
- Qty 16 5mm Euro screws, flat head to attach Drawer slides to cabinet
- Qty 24 #8 x 7/16" coarse deep thread truss screws to attach slide rails to drawers
- Qty 16 #8 x 1.25" Phillips flat head screws to secure drawer fronts to drawers
- 4 Drawer handles with machine screws
- 4 drawer bottoms
- 8 Drawer fronts/back
- 8 drawer sides



Separate the rails from the slides. Install the slides to the sides of the cabinet. Use the supplied 16 flat head 5mm Euro screws. You just need 2 screws per side. Skip the middle row of 5mm holes.

The 4 slides will be secured at the following holes counting down from the top (7, 19, 31, 43)

Make sure your slides open away from the back of the cabinet. You can tell it is the back because there is a line of vertical holes to secure the back.

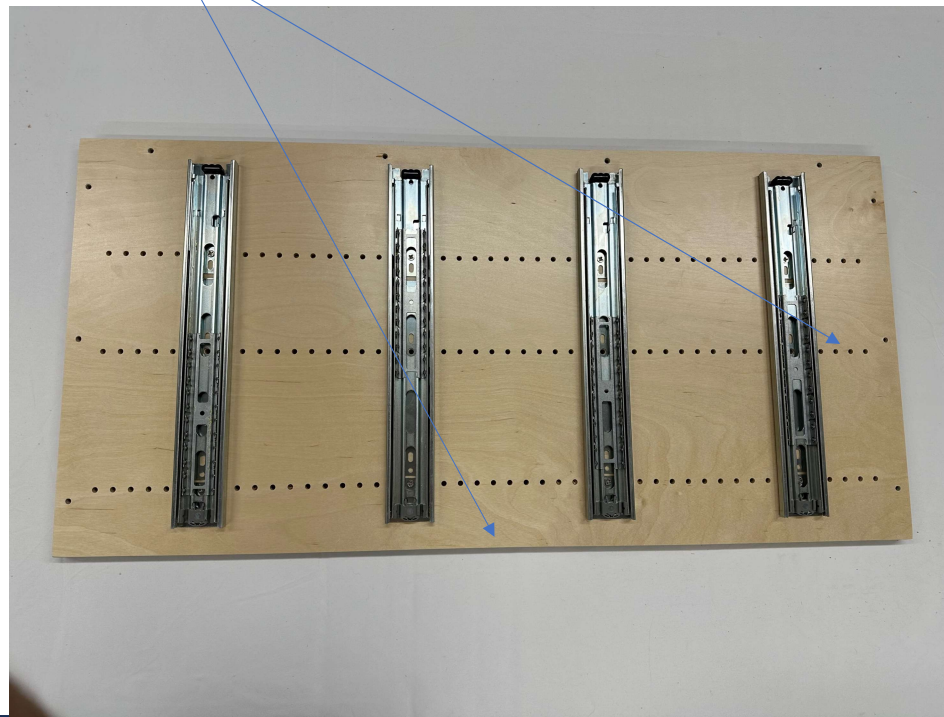


Chuck Cabineo tool into your drill. Set the torque to a really low setting.

Orient the cabinet side with the front facing you. In the picture below the bottom of the cabinet is on the right side. (4 holes visible below the bottom slide)

The carcass bottom has the WW&W logo on the inside front face. Align the 3 Cabineo screws with the 3 5mm holes on the bottom of the cabinet side.

Screw the middle Cabineo in a little so that it holds the part loosely. You will fully tighten it later. Double check the holes to accept the back are on the same side.



Tightening Cabineos

Do not to overtighten the hardware or it will strip out. Tighten until you feel the Cabineo bear down slightly and the gap goes away. It is also a little tricky to get the hex bit to release after tightening. I find that if I twist the drill a little in a counter-clockwise direction it helps removal. Worst case you can separate the bit from the drill and twist/wobble it a little to break it free.

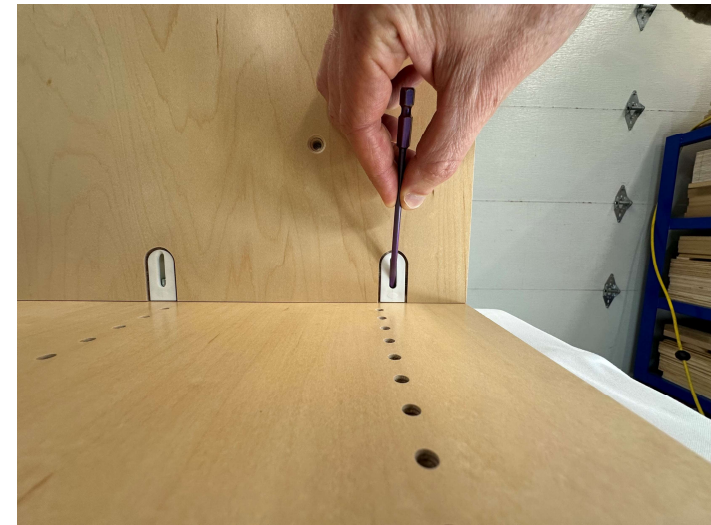
Before Tightening



After Tightening



Twist/Wobble To Break Bit Free

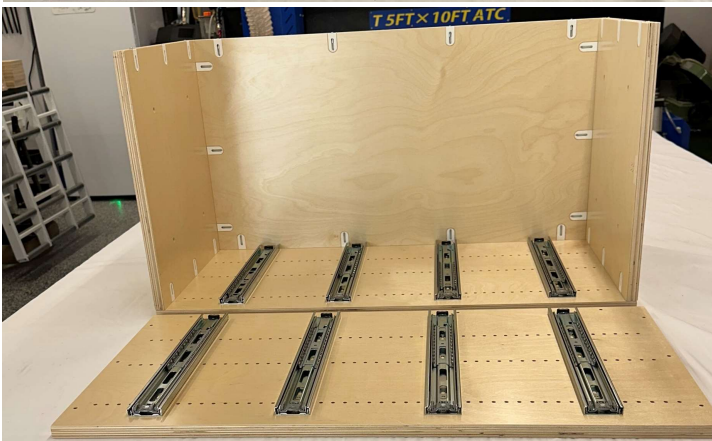


Cabinet Assembly

1. Set the cabinet back in position and tighten Cabineo screws loosely.



2. Similarly loosely secure the top. Once all loosely set, tighten all Cabineo screws carefully until the gaps disappear (don't over-torque!).



3. Orient the remaining side with the front facing you & flip the cabinet over onto it.



4. Loosely secure the remaining Cabineos and then do the final tightening just like step 2.

- Put the back in and secure the Cabineos loosely. Once the back, bottom, and top Cabineos are all in, secure them all to final tightness.
- Flip over the partially assembled cabinet onto the last side so that gravity can work in your favor. Align and loosely set the Cabineos as you did previously
- Tighten all the Cabineos from the last side

1. Place 2 drawer sides under the cabinet to align your applied top/bottom to the cabinet.



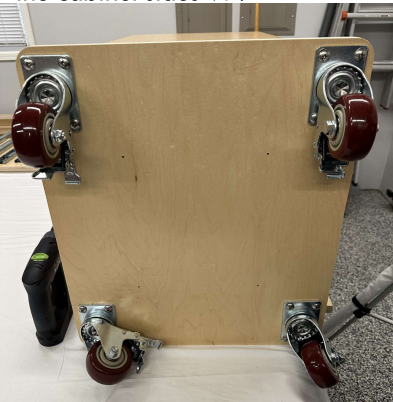
2. Find the cabinet top, bottom, casters.



3. Use 16 #14 x 3/4" stainless truss head screws to secure casters to plywood.



4. Bring the applied bottom (long side vertical) to cabinet. The applied top & bottom overhang the cabinet sides 3/4".



5. Using #8x1.25" Phillips flat head screws, align the applied bottom with the cabinet & tighten by hand.



6. Finish securing the applied bottom with a drill.



7. Repeat steps 5-6 for applied top.



8. Set cabinet upright for drawer installation.



Cabineo Caps

The Cabineo caps can be installed to provide a finished appearance. Slide the flat end of the cap up against the adjacent wall and press down. I recommend placing your cart on the ground for the next step as the trays and boxes can get heavy.



Drawer Assembly

Grab a set of drawer parts that includes 2 sides, a front, and a back

Start by attaching the back to a side

Slide in the drawer bottom with the white melamine surface facing up as shown below

Attach the front and secure it with your drill



Drawer Assembly

Attach the partial box to the last side

Secure the handle to each drawer front. Hand tighten to start the threads then use a drill to finish

Note the drawer face numbers. The drawer fronts are specific sizes & locations, but the assembled drawers are all the same. The fronts are marked on the back side. #1 is top position working your way down to # 4 on the bottom

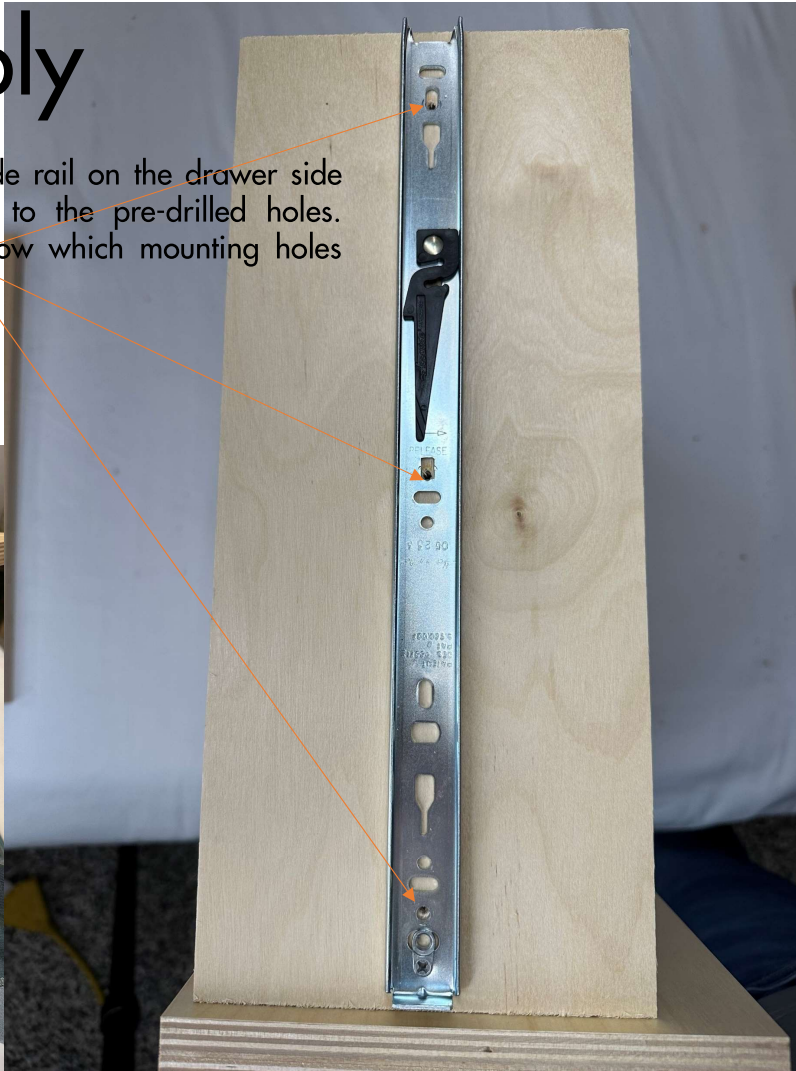
Screw in the #8 x 1.25 Phillips screws through the pre-drilled holes in the inner drawer front so that they stick out slightly to align with the holes in the drawer face



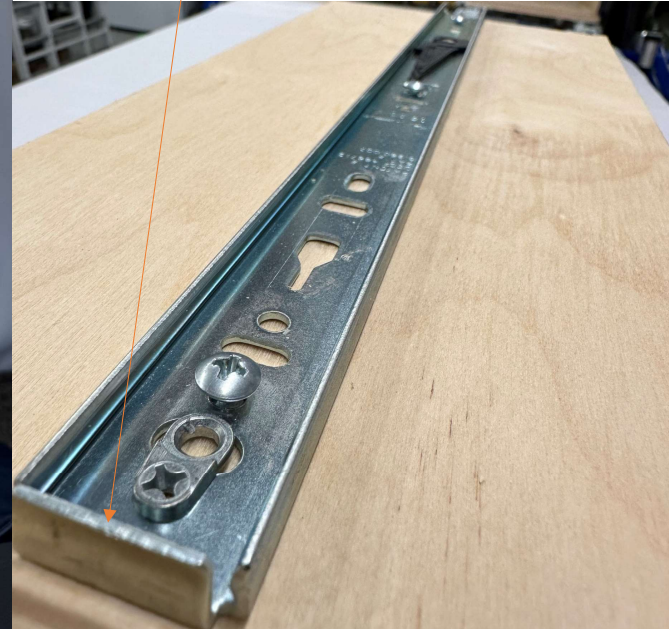
Drawer Assembly

Set the slide rail on the drawer side and align to the pre-drilled holes. Arrows show which mounting holes to use.

Tighten the 4 screws to secure the drawer front



With the bent end of the slide rail towards the drawer front side, partially screw in the three #8 x 7/16 screws starting with the center square hole and then both ends. You may have to angle it slightly to get it started. Once all 3 are loosely in place, secure the rest of the way.



Note: before this next step, you may want to put your cabinet on the floor for the remainder of assembly before it gets to heavy

Drawer Assembly

Secure the slide rail, on the other side and complete the rest of the drawers the same way as previous steps. Take the drawer with the face labeled #1 and slide it into the top position as shown below.

Once you push in the drawer ~75% of the way, it will suddenly take more force.

Continue pushing while holding the outside of the cabinet with your other hand to take it all the way flush.

Slide in the rest of the drawers the same way working your way down with #2, 3, and 4.



Build the Shop of Your Dreams with the Multi-Cart System

THANK YOU FOR SUPPORTING MY SMALL BUSINESS!

ALL MULTI-CART PIECES WORK TOGETHER TO CREATE COHESIVE AND CLEAN ORGANIZATION.

ALL ACCESSORIES AND CARTS ARE AVAILABLE (OR WILL BE SOON) ON WOODWORKANDWELD.COM

TOOL STACK CART



PULL OUT TRAY



FASTENER CART



MITER SAW STAND

